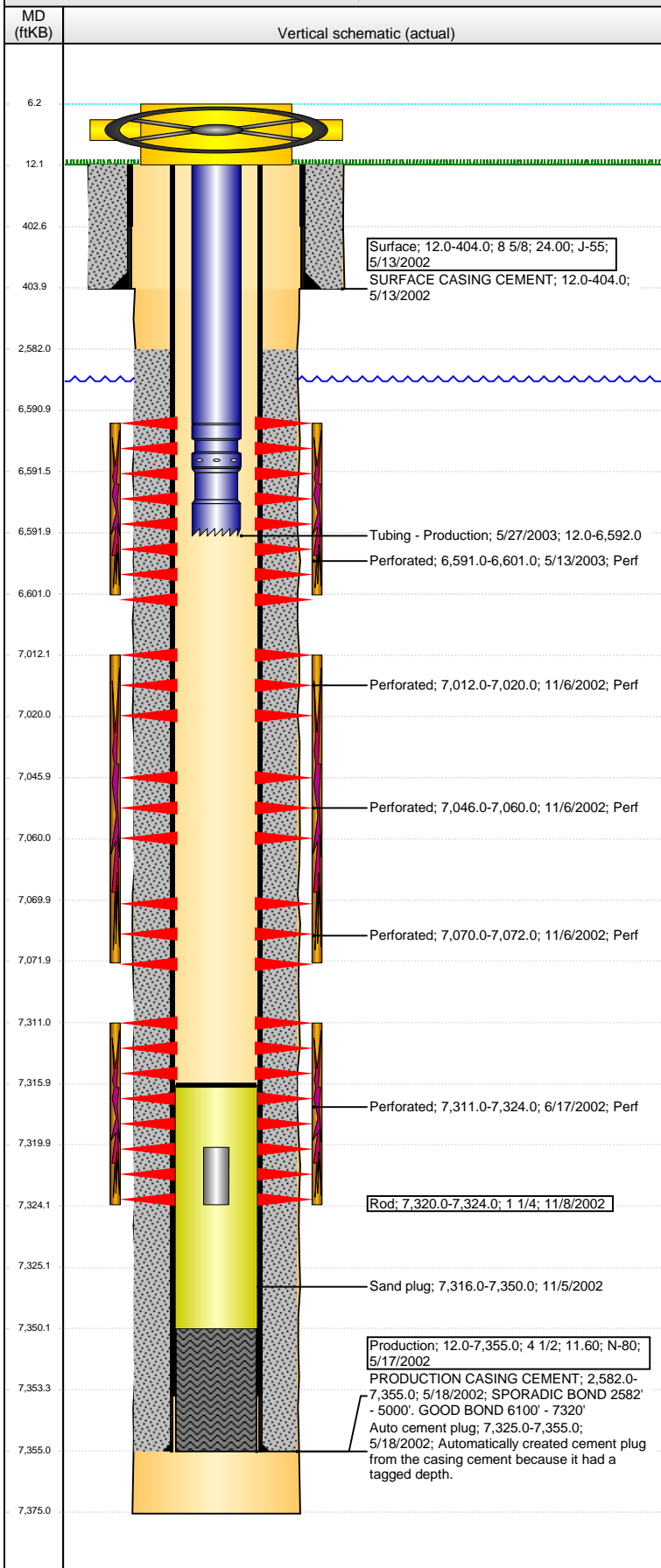


Well Name: NATIONAL HOG FARMS 12-21

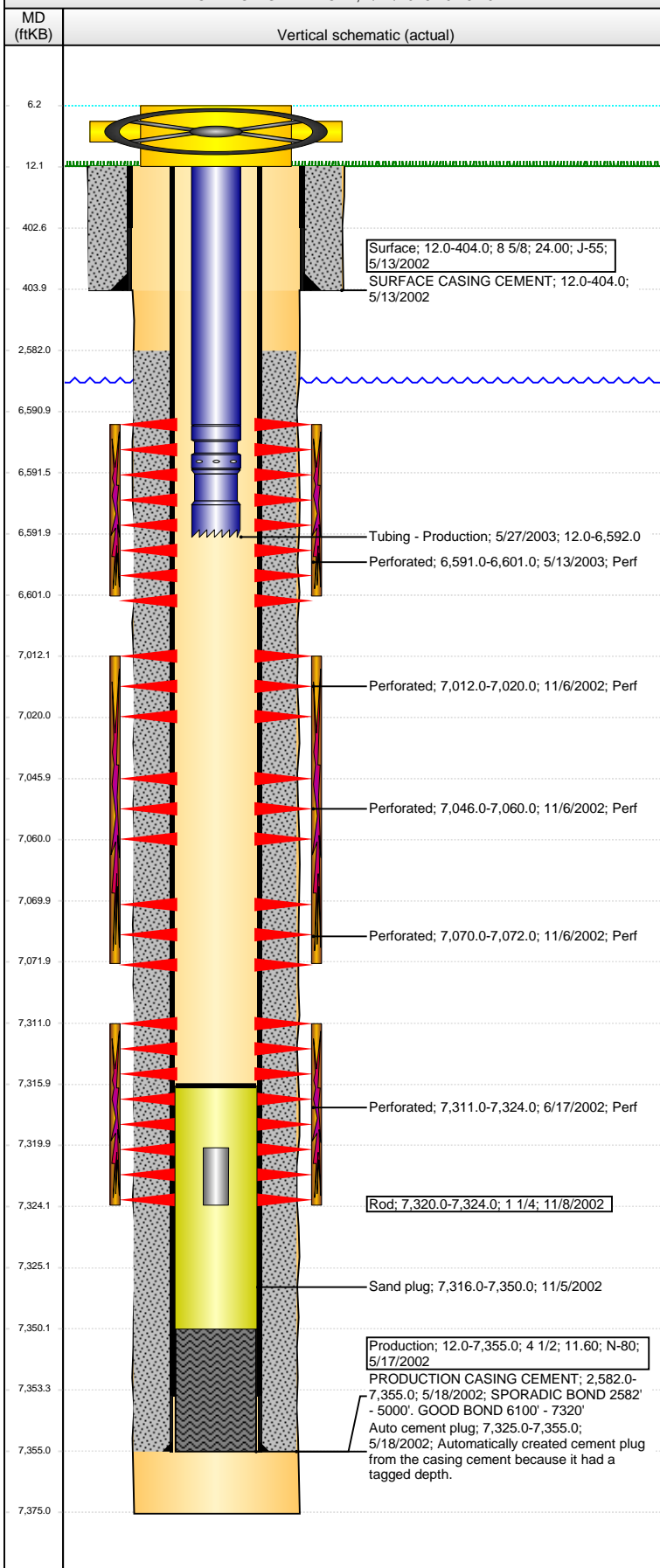
VERTICAL - ORIGINAL HOLE, 4/21/2016 10:25:08 AM



| Well Header | | | | | | | | | |
|--|--------------|-------------------------------|--------------------|------------------------|---------------------------|-------------------------|---------------------|------------------|--|
| API 05-123-20809 | | Business Unit DJ BASIN | | District 15 | | Well Config VERTICAL | | | |
| Original KB Elevation (ft) 4,627 | | KB - GL / MSL (ftKB) 12.00 | | Spud Date 5/12/2002 | | P & A Date | | | |
| Comment 11/8/2002: 1-1/4" X 4' BAILER BAR DROPPED DOWNHOLE. BAILER BAR IN HOLE PREVENTS CLEAN OUT OF ENTIRE DAKOTA ZONE. | | | | | | | | | |
| Directions To Well | | | | | | | | | |
| Congressional Location | | | | | | | | | |
| Quarter 1 | Quarter 2 | Quarter 3 SW | Quarter 4 NW | Section 21 | Township 5N | Twnshp N... | Range 63 | Rng E/W Dir W | |
| Bottom Hole Location | | | | | | | | | |
| North-South Distance (ft) | | | From N or S Line | | East-West Distance (ft) | | | From E or W Line | |
| Plug Back Total Depths | | | | | | | | | |
| Date | Depth (ftKB) | | Method | | Com | | | | |
| 5/18/2002 | 7,350.0 | | CASING TALLY | | ORIGINAL PBTd, FLOAT SHOE | | | | |
| 5/24/2002 | 7,325.0 | | CASED HOLE LOG | | DEPTH LOGGER | | | | |
| 5/27/2003 | 7,316.0 | | TAG | | TAGGED FILL | | | | |
| Wellbore Sections | | | | | | | | | |
| Section Des | | | Size (in) | | Act Top, MD (ftKB) | | Act Btm, MD (ftKB) | | |
| SURFACE | | | 12 1/4 | | 12.0 | | 404.0 | | |
| PRODUCTION | | | 7 7/8 | | 404.0 | | 7,375.0 | | |
| Zone Statuses | | | | | | | | | |
| Zone Name | | Status Date | Status | Fluid Type | Job | Prod Method | | | |
| J SAND | | 11/26/2002 | PR | Gas | DRILLING/CO... | | | | |
| DAKOTA | | 11/26/2002 | PR | | DRILLING/CO... | | | | |
| CODELL | | 5/30/2003 | PR | | RECOMPLETI... | | | | |
| Casing Strings | | | | | | | | | |
| Surface, 404.0ftKB | | | | | | | | | |
| Casing Description | | Run Date | OD (in) | Wt/Len (l... | Grade | Top, MD (ft... | MD (ftKB) | | |
| Surface | | 5/13/2002 | 8 5/8 | 24.00 | J-55 | 12.0 | 404.0 | | |
| Production, 7,355.0ftKB | | | | | | | | | |
| Casing Description | | Run Date | OD (in) | Wt/Len (l... | Grade | Top, MD (ft... | MD (ftKB) | | |
| Production | | 5/17/2002 | 4 1/2 | 11.60 | N-80 | 12.0 | 7,355.0 | | |
| Cement | | | | | | | | | |
| Description | | | | | Top Depth (ftKB) | | Bottom Depth (ftKB) | | |
| SURFACE CASING CEMENT | | | | | 12.0 | | 404.0 | | |
| Description | | | | | Top Depth (ftKB) | | Bottom Depth (ftKB) | | |
| PRODUCTION CASING CEMENT | | | | | 2,582.0 | | 7,355.0 | | |
| Tubing Strings | | | | | | | | | |
| Tubing Description | | Run Date | String... | ID (in) | Wt (lb/ft) | Grade | Len (ft) | Set De... | |
| Tubing - Production | | 5/27/2003 | 2 3/8 | 1.995 | 4.70 | J-55 | 6,580.00 | | |
| Tubing Components | | | | | | | | | |
| Item Des | | OD (in) | Wt (lb/ft) | Grade | Jts | Len (ft) | Btm (ftKB) | Btm (TVD) (ftKB) | |
| EUE 8rd Tubing | | 2 3/8 | 4.70 | J-55 | 213 | 6,579.00 | 6,591.0 | | |
| Seal Nipple | | 2 3/8 | | | 1 | 0.50 | 6,591.5 | | |
| Notched collar | | 2 3/8 | | | 1 | 0.50 | 6,592.0 | | |
| Rods & Pumps | | | | | | | | | |
| Rod Description | | | | | Run Date | | Set Depth (ftKB) | | |
| Rod | | | | | 11/8/2002 | | 7,324.0 | | |
| Comment BAILER BAR DROPPED DOWNHOLE | | | | | | | | | |
| Item Description | | | | OD Nominal (in) | | Joints | Length (ft) | | |
| BAILER BAR | | | | 1 1/4 | | 1 | 4.00 | | |
| Perforation Data | | | | | | | | | |
| Zone | | Brnch/St g | Entered Shot Total | Top (ftKB) | | Btm (ftKB) | | Date | |
| CODELL, ORIGINAL HOLE | | | 40 | 6,591.00 | | 6,601.00 | | 5/13/2003 | |
| J SAND, ORIGINAL HOLE | | | 32 | 7,012.00 | | 7,020.00 | | 11/6/2002 | |
| J SAND, ORIGINAL HOLE | | | 56 | 7,046.00 | | 7,060.00 | | 11/6/2002 | |
| J SAND, ORIGINAL HOLE | | | 8 | 7,070.00 | | 7,072.00 | | 11/6/2002 | |
| DAKOTA, ORIGINAL HOLE | | | 52 | 7,311.00 | | 7,324.00 | | 6/17/2002 | |

Well Name: NATIONAL HOG FARMS 12-21

VERTICAL - ORIGINAL HOLE, 4/21/2016 10:25:10 AM



Stimulations & Treatments

| Date | Zone | Primary Job Type |
|------------------|-----------------------|--------------------------------|
| 7/1/2002 | DAKOTA, ORIGINAL HOLE | DRILLING/COMPLETION - ORIGINAL |
| Technical Result | Tech Result Details | Tech Result Note |
| Comment | | |
| Date | Zone | Primary Job Type |
| 11/6/2002 | J SAND, ORIGINAL HOLE | DRILLING/COMPLETION - ORIGINAL |
| Technical Result | Tech Result Details | Tech Result Note |
| Comment | | |
| Date | Zone | Primary Job Type |
| 5/13/2003 | CODELL, ORIGINAL HOLE | RECOMPLETION |
| Technical Result | Tech Result Details | Tech Result Note |
| Comment | | |

Other In Hole

| Run Date | Des | OD (in) | Top (ftKB) | Btm (ftKB) |
|-----------|---------------------|----------------|----------------|------------|
| 11/5/2002 | Sand plug | 3.99 | 7,316.0 | 7,350.0 |
| Logs | | | | |
| Date | Type | Top, MD (ftKB) | Btm, MD (ftKB) | |
| 5/18/2002 | COMPENSATED DENSITY | 404.0 | 7,375.0 | |
| 5/24/2002 | CBL/CCL/GR | 2,400.0 | 7,320.0 | |
| 5/19/2011 | GYRO | 10.0 | 6,590.0 | |