

HALLIBURTON

iCem[®] Service

WPX ENERGY ROCKY MOUNTAIN LLC-EBUS

For:

FEDERAL RU 31-8

API/UWI #: **05-045-22773-00**

Case 1

Job Date: Tuesday, February 16, 2016

Sincerely,

Grand Junction Cement Engineers

1.0 Real-Time Job Summary

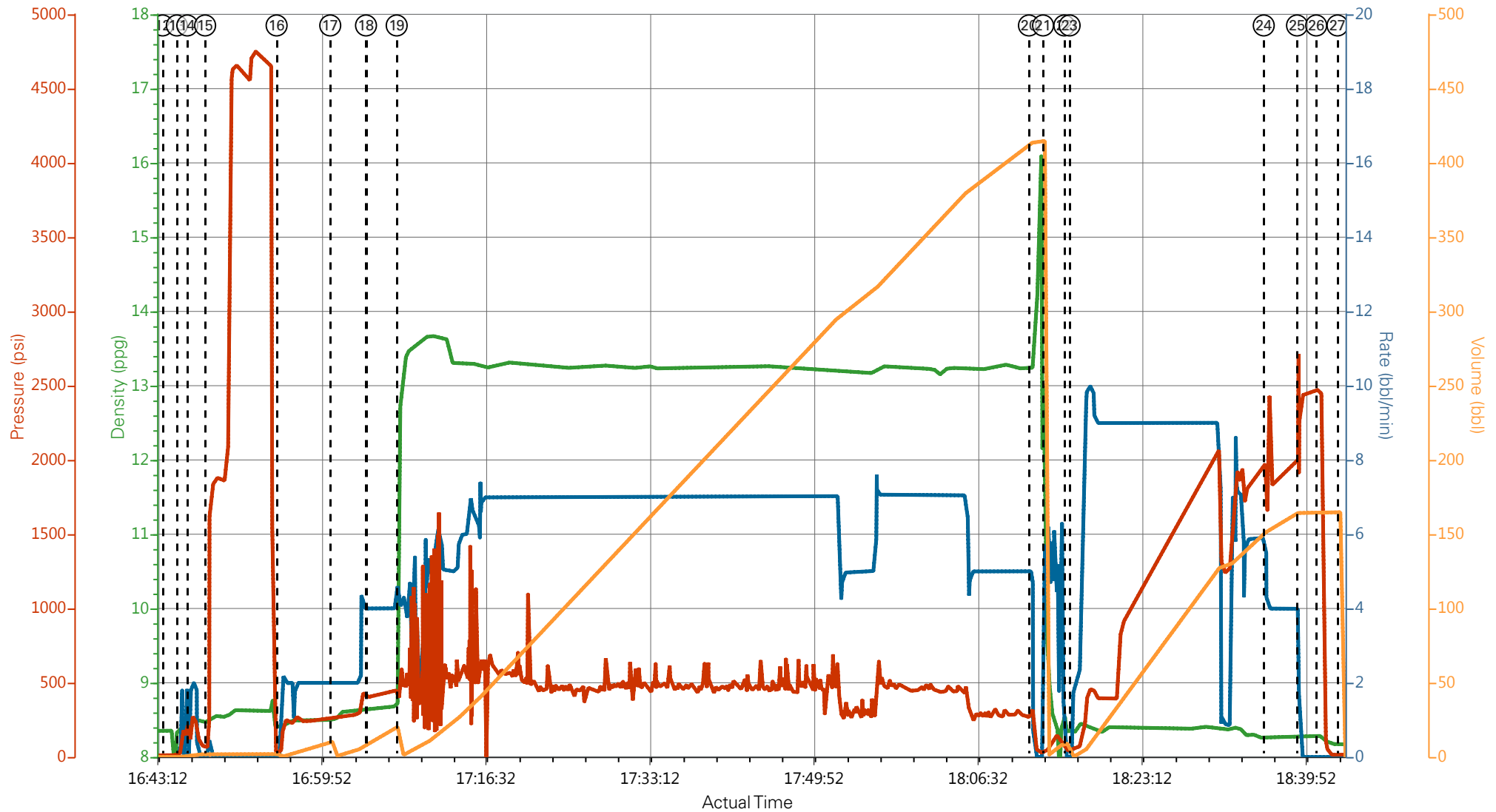
1.1 Job Event Log

Type	Seq. No.	Activity	Graph Label	Date	Time	Source	DH Density (ppg)	Comb Pump Rate (bbl/min)	PS Pump Press (psi)	Pump Stg Tot (bbl)	Comments
Event	1	Call Out	Call Out	2/16/2016	09:00:00	USER					
Event	2	Pre-Convoy Safety Meeting	Pre-Convoy Safety Meeting	2/16/2016	11:20:00	USER					WITH ALL HES PERSONNEL
Event	3	Crew Leave Yard	Crew Leave Yard	2/16/2016	11:30:00	USER					
Event	4	Arrive At Loc	Arrive At Location	2/16/2016	14:00:00	USER					RIG WAS RUNNING CASING UPON HES ARRIVAL
Event	5	Assessment Of Location Safety Meeting	Assessment Of Location Safety Meeting	2/16/2016	14:10:00	USER					WITH ALL HES PERSONNEL
Event	6	Other	Meet With Company Rep	2/16/2016	14:15:00	USER					GO OVER FINAL VOLUMES, JOB PROCEEDURES. OFFERED MSDS RECIEPT
Event	7	Other	Spot Equipment	2/16/2016	14:20:00	USER					
Event	8	Other	Water Test	2/16/2016	14:25:00	USER					TEMP-75, CHLORIDES-0, PH-6
Event	9	Pre-Rig Up Safety Meeting	Pre-Rig Up Safety Meeting	2/16/2016	14:30:00	USER					WITH ALL HES PERSONNEL
Event	10	Rig-Up Equipment	Rig-Up Equipment	2/16/2016	14:40:00	USER					1 PUMP, 1 BULK TRUCK, 1 SILO
Event	11	Pre-Job Safety Meeting	Pre-Job Safety Meeting	2/16/2016	15:14:51	USER					WITH ALL PERSONNEL
Event	12	Start Job	Start Job	2/16/2016	16:44:00	USER					TD 10121 FT, TP 10111 FT, SHOE 31 FT, CSG 4 1/2 IN 11.6 LB/FT, HOLE 8 3/4 IN, MUD WT 10.4 PPG, SURFACE CASING SET AT 1218 FT.

Event	13	Prime Pumps	Prime Pumps	2/16/2016	16:45:26	COM5	8.33	2.0	295.0	2.0	FRESH WATER
Event	14	Drop Bottom Plug	Drop Bottom Plug	2/16/2016	16:46:30	USER					PLUG LAUNCHED
Event	15	Test Lines	Test Lines	2/16/2016	16:48:18	COM5					TESTED LINES TO 4767 PSI PRESSURE HOLDING
Event	16	Pump Spacer 1	Pump H2O Spacer	2/16/2016	16:55:34	COM5	8.33	2.0	260.0	10.0	FRESH WATER
Event	17	Pump Spacer 2	Pump Mud Flush Spacer	2/16/2016	17:01:01	COM5	8.5	4.0	440.0	20.0	Mud Flush III
Event	18	Check Weight	Check weight	2/16/2016	17:04:39	COM5					SCALES SHOW 13.3 PPG
Event	19	Pump Tail Cement	Pump Tail Cement	2/16/2016	17:07:46	COM5	13.3	7.0	415.0	332.8	1080 SKS ThermoCem AT 13.3 PPG, 1.73 FT3/SK, 7.81 GAL/SK
Event	20	Shutdown	Shutdown	2/16/2016	18:12:00	USER					
Event	21	Clean Lines	Clean Lines	2/16/2016	18:13:26	COM5					CLEANED PUMPS AND LINES TO WASHUP TRUCK
Event	22	Drop Top Plug	Drop Top Plug	2/16/2016	18:15:36	COM5					PLUG LAUNCHED
Event	23	Pump Displacement	Pump Displacement	2/16/2016	18:16:08	COM5	8.4	9.0	1980.0	156.2	1 GAL MMCR IN FIRST 10 BBLS, 3 BAGS BE-6 IN NEXT 30 BBLS AND 50 LBS KCL PER 10 BBLS.
Event	24	Slow Rate	Slow Rate	2/16/2016	18:35:51	USER	8.4	4.0	2000.0	146.2	SLOWED RATE 10 BBLS PRIOR TO CALCULATED DIASPLACEMENT
Event	25	Bump Plug	Bump Plug	2/16/2016	18:39:14	COM5		4.0	2460.0		
Event	26	Other	Check Floats	2/16/2016	18:41:11	COM5					FLOATS HOLDING. HES RETURNED 2 BBLS H2O TO PUMP
Event	27	End Job	End Job	2/16/2016	18:43:21	COM5					PIPE WAS RECIPROCATED DURING JOB, GOOD CIRCULATION THROUGHOUT JOB. HES USED ALL CHEMICALS FOR JOB, USED 30 LBS SUGAR FOR JOB.

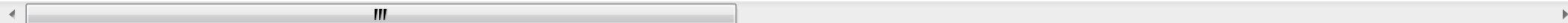
Event	28	Pre-Rig Down Safety Meeting	Pre-Rig Down Safety Meeting	2/16/2016	18:50:00	USER	WITH ALL HES PERSONNEL
Event	29	Rig-Down Equipment	Rig-Down Equipment	2/16/2016	19:00:00	USER	
Event	30	Pre-Convoy Safety Meeting	Pre-Convoy Safety Meeting	2/16/2016	20:20:00	USER	WITH ALL HES PERSONNEL
Event	31	Crew Leave Location	Crew Leave Location	2/16/2016	20:30:00	USER	
Event	32	Comment	Comment	2/16/2016	20:31:00	USER	THANK YOU FOR USING HALLIBURTON CEMENT DEPARTMENT. JESSE SLAUGHTER AND CREW.

WPX ENERGY - FEDERAL RU 31-8 - PRODUCTION



DH Density (ppg) 12.66 Comb Pump Rate (bbl/min) 2 PS Pump Press (psi) 9 Pump Stg Tot (bbl) 4.2

- | | | | | | | |
|-----------------------------|-------------------|---|------------------|-----------------------------|--------------------------|--------------------|
| ① Call Out | ③ Crew Leave Yard | ⑤ Assessment Of Location Safety Meeting | ⑦ Spot Equipment | ⑨ Pre-Rig Up Safety Meeting | ⑪ Pre-Job Safety Meeting | ⑬ Prime Pumps |
| ② Pre-Convoy Safety Meeting | ④ Arrive At Loc | ⑥ Meet With Company Rep | ⑧ Water Test | ⑩ Rig-Up Equipment | ⑫ Start Job | ⑭ Drop Bottom Plug |



▼ **HALLIBURTON** | iCem® Service

Created: 2016-02-16 10:30:29, Version: 4.1.107

Edit

Customer: WPX ENERGY ROCKY MOUNTAIN LLC-EBUS

Job Date: 2/16/2016 3:09:53 PM

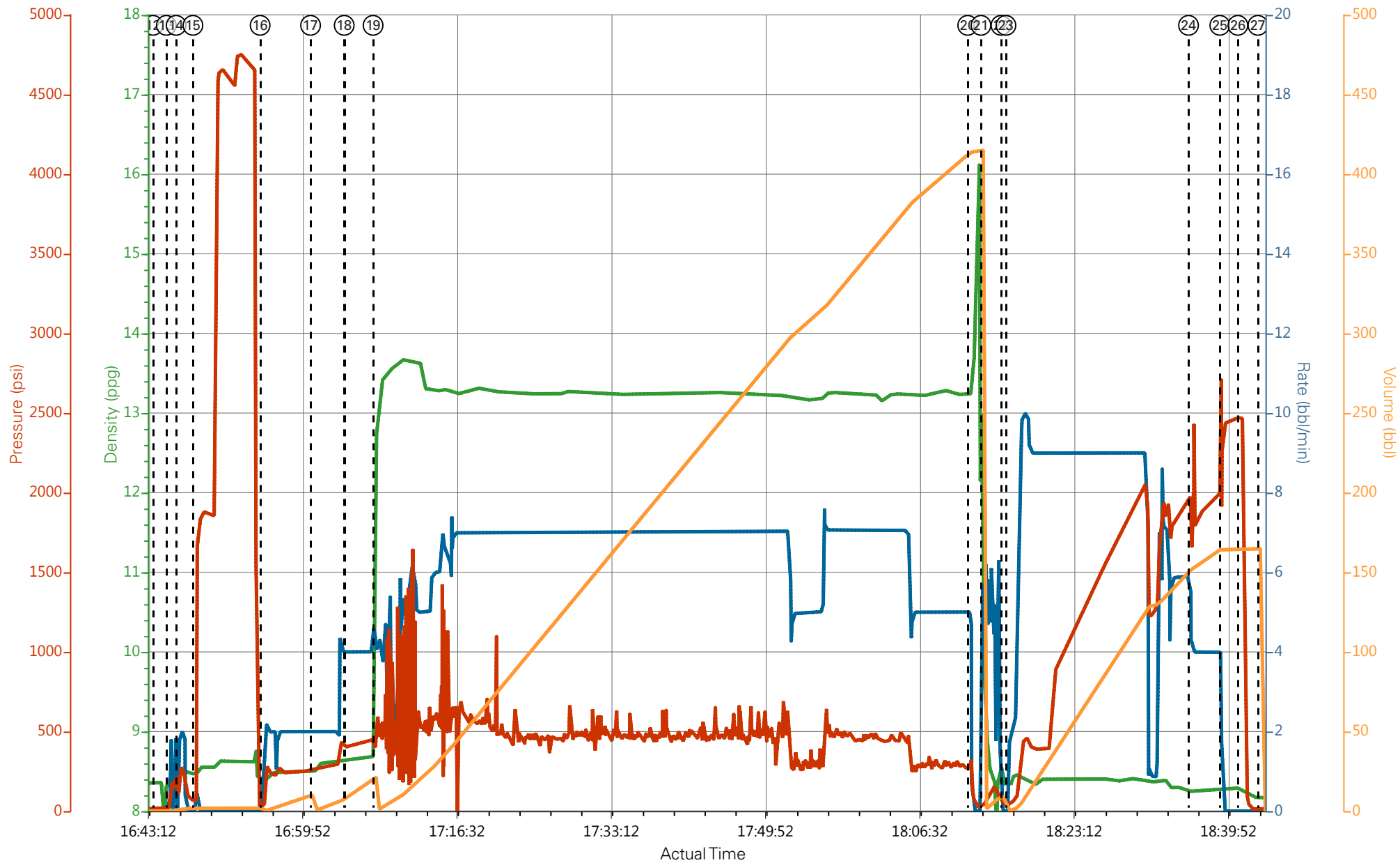
Well: FEDERAL RU 31-8

Representative: BEAUDE OAKS

Sales Order #: 903122519

Elite #8: JESSE SLAUGHTER / RYAN MARTIN

WPX ENERGY - FEDERAL RU 31-8 - PRODUCTION



DH Density (ppg) 13.19 Comb Pump Rate (bbl/min) 2 PS Pump Press (psi) 9 Pump Stg Tot (bbl) 6.4

HALLIBURTON | iCem® Service

Created: 2016-02-16 10:30:29, Version: 4.1.107

Edit

Customer: WPX ENERGY ROCKY MOUNTAIN LLC-EBUS

Job Date: 2/16/2016 3:09:53 PM

Well: FEDERAL RU 31-8

Representative: BEAUDE OAKS

Sales Order #: 903122519

Elite #8: JESSE SLAUGHTER / RYAN MARTIN

Job Information

Request/Slurry	2303375/3	Rig Name	H&P 318	Date	11/FEB/2016
Submitted By	Evan Russell	Job Type	Production Casing	Bulk Plant	Grand Junction
Customer	WPX Energy, Inc.	Location	Garfield	Well	RU 31-8

Well Information

Casing/Liner Size	4.5 in	Depth MD	10104 ft	BHST	121°C / 250°F
Hole Size	8.75 in	Depth TVD	9975 ft	BHCT	82°C / 180°F
Pressure	6370 psi				

Drilling Fluid Information

Mud Supplier Name	Mud Trade Name	Density
-------------------	----------------	---------

Cement Information - Primary Design

Conc	UOM	Cement/Additive	Sample Type	Sample Date	Lot No.	Cement Properties		
		> Mountain G	Bulk Blend	12.02.16	Tank 29	Slurry Density	13.3	lbm/gal
		> San Juan	Bulk Blend	12.02.16	Tank 19	Slurry Yield	1.733	ft3/sack
		Cement Blend				Water Requirement	7.799	gal/sack
		Fresh Water	Lab	12.03.13		Total Mix Fluid	7.799	gal/sack
		HALAD-344 (PB)	Bulk Blend	12.02.16	15061640			
		SA-1015 (PB)	Bulk Blend	12.02.16	5A0006W			
		SUPER CBL	Bulk Blend	12.02.16	15L0067	Water Source	Fresh Water	
		SS-200 silica flour	Bulk Blend	12.02.16	Tank 6	Water Chloride		
		Kol-Seal	Bulk Blend	12.02.16	Tank 1			
		Pol-E-Flake	Bulk Blend	12.02.16	NA			
		HR-601	Bulk Blend	12.02.16	71			
		HALAD-413 (PB)	Bulk Blend	12.02.16	ZM5B0425AO			

This report is the property of Halliburton Energy Services and neither it nor any part thereof, nor a copy thereof, is to be published or disclosed without first securing the expressed written approval of Halliburton. It may however be used in the course of regular business operations by any person or concern receiving such report from Halliburton. This report is for information purposes only and the content is limited to the sample described. Halliburton makes no warranties, expressed or implied, as to the accuracy of the contents or results. Any user of this report agrees Halliburton shall not be liable for any loss or damage regardless of cause, including any act or omission of Halliburton, resulting from the use hereof.

Operation Test Results Request ID 2303375/3

Thickening Time

12/FEB/2016

Temp (°F)	Pressure (psi)	Reached in (min)	Start BC	30 Bc (hh:mm)	40 Bc (hh:mm)	50 Bc (hh:mm)	70 Bc (hh:mm)	100 Bc (hh:mm)
180	6370	50	26	5:04	5:15	5:27	6:14	6:49

Total Sacks 1080

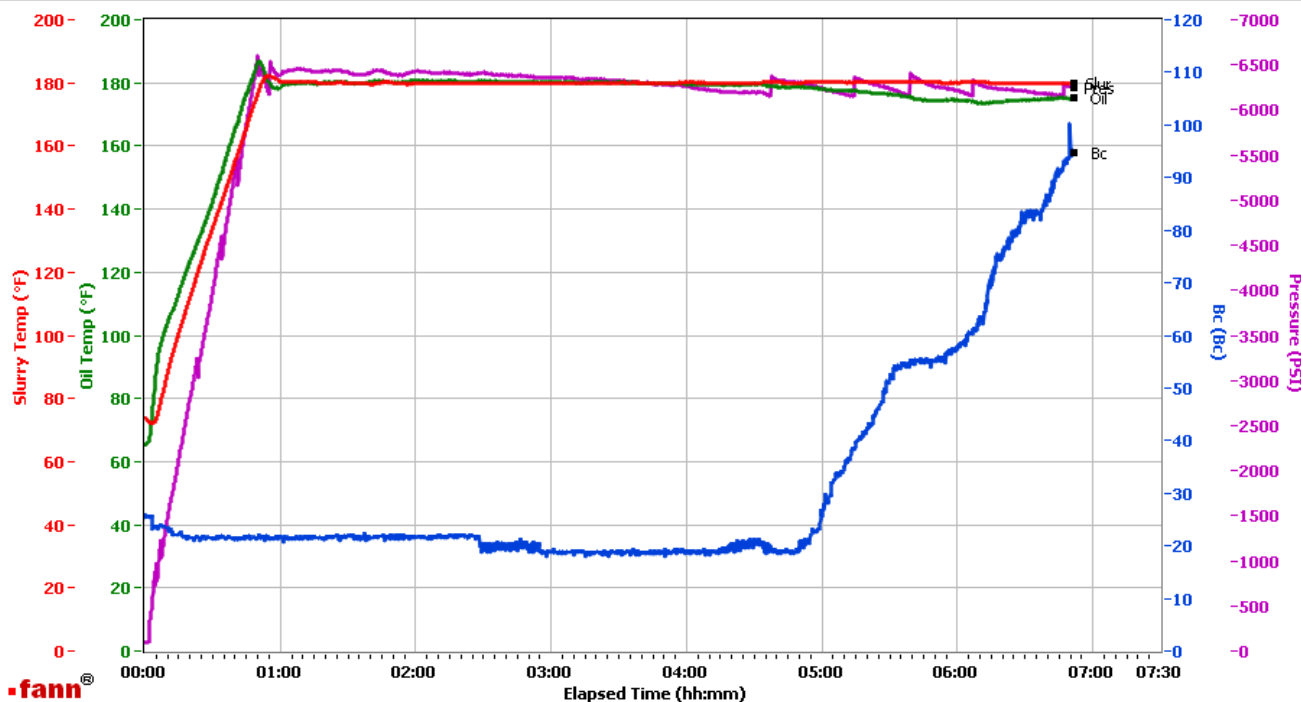
CS0216 TR 3212 230 SKS

Grand Junction Colorado

Fields	Values
Project Name	BULK PRODUCTION PRIMARY
Test ID	GJ2303375-3
Request ID	
Tested by	CT
Customer	WPX
Well No	RU 31-8
Rig	
Casing/Liner Size	

Fields	Values
Job Type	
Cement Type	
Cement Weight	Standard
Test Date	03/21/09
Test Time	10:26 AM
Temp. Units	degF
Pressure Units	PSI
SW Version	2.1.0.1219

Events	Results
30.00 Bc	05h:04m
40.00 Bc	05h:15m
50.00 Bc	05h:27m
70.00 Bc	06h:14m
100.00 Bc	06h:49m
00h:30m	21.60
01h:00m	21.98
01h:30m	21.94



Data File C:\Documents and Settings\HPHT\Local Settings\Temporary Internet Files\Content.IE5\KD2P415J\GJ2303375-3 WPX BULK PRODUCTION PRIMARY[1].tdms

Comments CS0216 TRAILER 3212 230 SKS

This report is the property of Halliburton Energy Services and neither it nor any part thereof, nor a copy thereof, is to be published or disclosed without first securing the expressed written approval of Halliburton. It may however be used in the course of regular business operations by any person or concern receiving such report from Halliburton. This report is for information purposes only and the content is limited to the sample described. Halliburton makes no warranties, expressed or implied, as to the accuracy of the contents or results. Any user of this report agrees Halliburton shall not be liable for any loss or damage regardless of cause, including any act or omission of Halliburton, resulting from the use hereof.

Operation Test Results Request ID 2303375/2

Thickening Time

12/FEB/2016

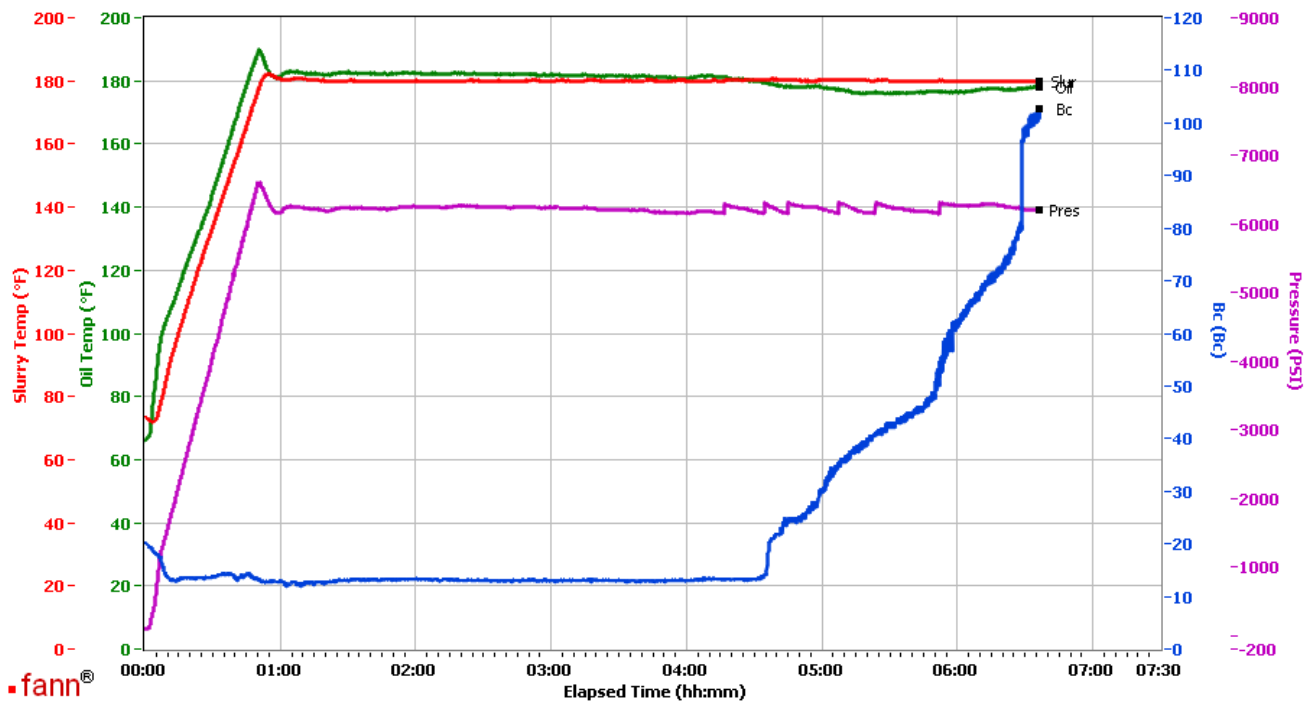
Temp (°F)	Pressure (psi)	Reached in (min)	Start BC	30 Bc (hh:mm)	40 Bc (hh:mm)	50 Bc (hh:mm)	70 Bc (hh:mm)	100 Bc (hh:mm)
180	6370	50	20	4:59	5:20	5:50	6:12	6:32

Total Sacks 1080

CS0215 TR2878 425SKS

Grand Junction Colorado

Fields	Values	Fields	Values	Events	Results
Project Name	GJ2303375-2	Job Type		30.00 Bc	04h:59m
Test ID	GJ2303375-2 WPX PRIMARY BULK	Cement Type		40.00 Bc	05h:20m
Request ID		Cement Weight	Standard	50.00 Bc	05h:50m
Tested by	LB	Test Date	02/11/16	70.00 Bc	06h:12m
Customer	WPX	Test Time	08:17 PM	100.00 Bc	06h:32m
Well No		Temp. Units	degF	00h:30m	13.74
Rig		Pressure Units	PSI	01h:00m	12.82
Casing/Liner Size		SW Version	2.1.0.507	01h:30m	13.11



Data File C:\Documents and Settings\M290\Local Settings\Temporary Internet Files\Content.IE5\GFOPMNY9\GJ2303375-2 WPX PRIMARY BULK[1].tdms

Comments CS0215 TR2878 425SKS

This report is the property of Halliburton Energy Services and neither it nor any part thereof, nor a copy thereof, is to be published or disclosed without first securing the expressed written approval of Halliburton. It may however be used in the course of regular business operations by any person or concern receiving such report from Halliburton. This report is for information purposes only and the content is limited to the sample described. Halliburton makes no warranties, expressed or implied, as to the accuracy of the contents or results. Any user of this report agrees Halliburton shall not be liable for any loss or damage regardless of cause, including any act or omission of Halliburton, resulting from the use hereof.

Operation Test Results Request ID 2303375/1

Thickening Time

12/FEB/2016

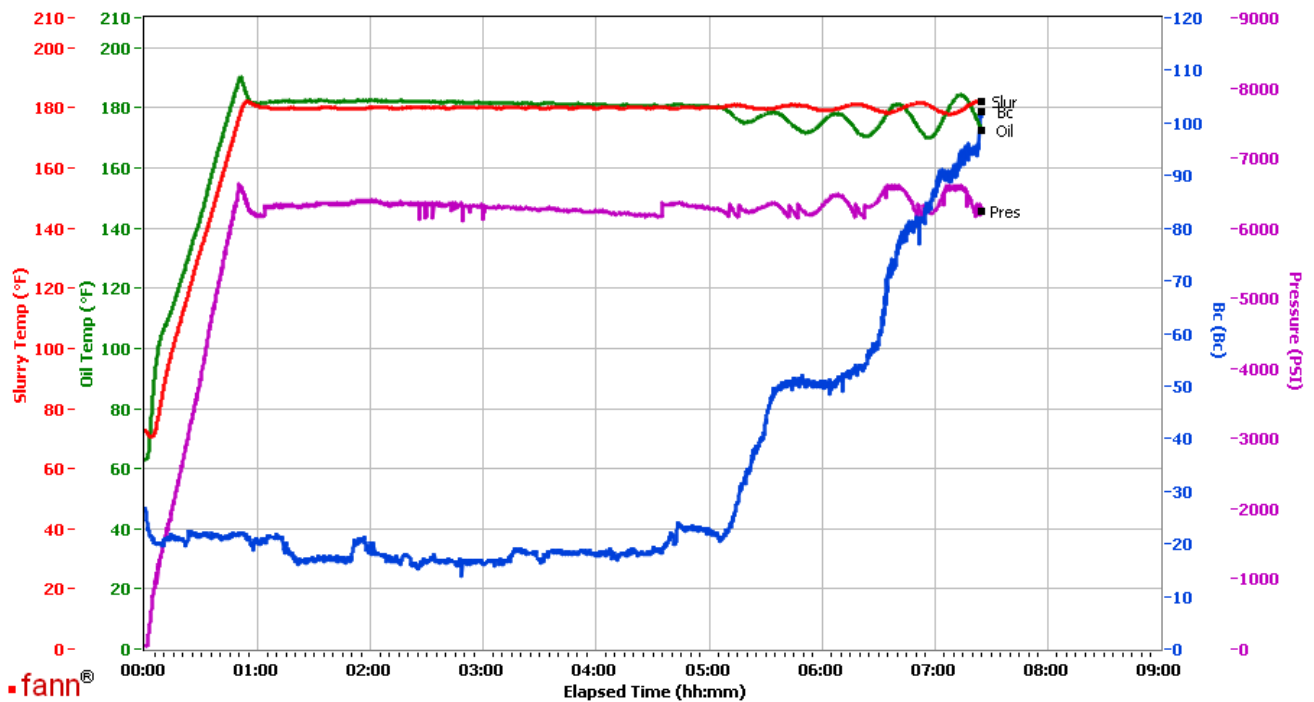
Temp (°F)	Pressure (psi)	Reached in (min)	Start BC	30 Bc (hh:mm)	40 Bc (hh:mm)	50 Bc (hh:mm)	70 Bc (hh:mm)	100 Bc (hh:mm)
180	6370	50	27	5:16	5:27	5:36	6:34	7:24

Total Sacks 1080

CS0214 TR8658 425SKS

Grand Junction Colorado

Fields	Values	Fields	Values	Events	Results
Project Name	GJ2303375-1	Job Type		30.00 Bc	05h:16m
Test ID	GJ2303375-1 WPX PRIMARY BULK	Cement Type		40.00 Bc	05h:27m
Request ID		Cement Weight	Standard	50.00 Bc	05h:36m
Tested by	LB	Test Date	02/12/16	70.00 Bc	06h:34m
Customer	WPX	Test Time	02:08 AM	100.00 Bc	07h:24m
Well No		Temp. Units	degF	00h:30m	21.50
Rig		Pressure Units	PSI	01h:00m	20.18
Casing/Liner Size		SW Version	2.1.0.507	01h:30m	16.99



Data File C:\Documents and Settings\M290\Local Settings\Temporary Internet Files\Content.IE5\CDER4HLV\GJ2303375-1 WPX PRIMARY BULK[1].tdms

Comments CS0214 TR8658 425SKS

This report is the property of Halliburton Energy Services and neither it nor any part thereof, nor a copy thereof, is to be published or disclosed without first securing the expressed written approval of Halliburton. It may however be used in the course of regular business operations by any person or concern receiving such report from Halliburton. This report is for information purposes only and the content is limited to the sample described. Halliburton makes no warranties, expressed or implied, as to the accuracy of the contents or results. Any user of this report agrees Halliburton shall not be liable for any loss or damage regardless of cause, including any act or omission of Halliburton, resulting from the use hereof.