

HALLIBURTON

iCem[®] Service

WPX ENERGY ROCKY MOUNTAIN LLC-EBUS

For: TED RAGSDALE

Date: Thursday, January 28, 2016

RU 342-8

API/UWI #: **05-045-22762-00**

H&P 318

9 5/8" SURFACE

Sincerely,

Grand Junction Cement Engineers

1.0 Real-Time Job Summary

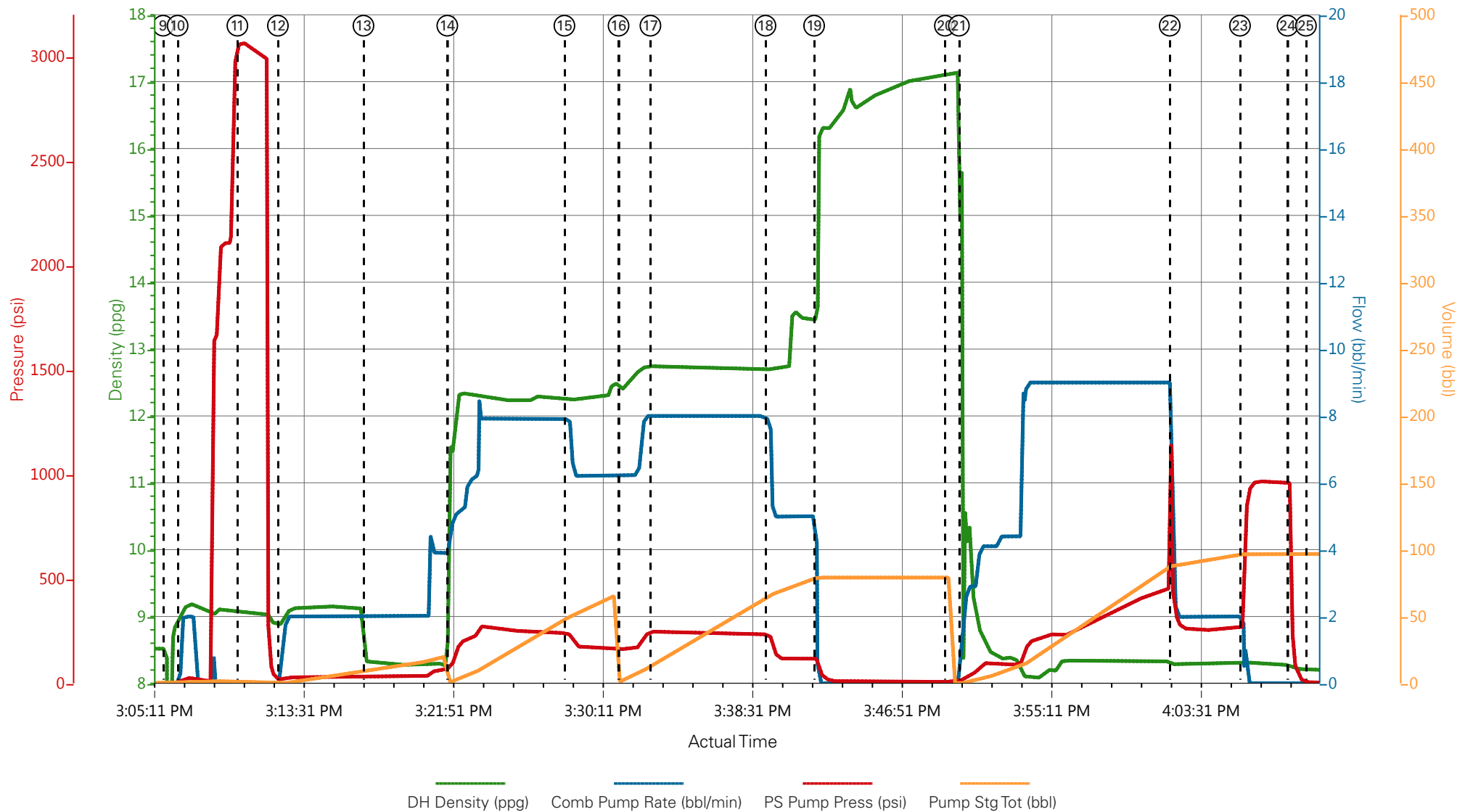
1.1 Job Event Log

Type	Seq. No.	Activity	Graph Label	Date	Time	Source	DH Density (ppg)	Comb Pump Rate (bbl/min)	PS Pump Press (psi)	Pump Stg Tot (bbl)	Comments
Event	1	Call Out	Call Out	1/28/2016	06:00:00	USER					ON LOCATION @ 12:00
Event	2	Pre-Convoy Safety Meeting	Pre-Convoy Safety Meeting	1/28/2016	10:00:00	USER					ALL OF HES CREW PRESENT
Event	3	Crew Leave Yard	Crew Leave Yard	1/28/2016	10:15:00	USER					1 HT 400 PUMP TRUCK E8, 1 660 BULK TRUCK, 1 550 SERVICE PICKUP
Event	4	Arrive At Loc	Arrive At Loc	1/28/2016	13:00:00	USER					RIG RUNNING CASING UPON HES ARRIVAL
Event	5	Assessment Of Location Safety Meeting	Assessment Of Location Safety Meeting	1/28/2016	13:15:00	USER					PERFORMED JSA AND WATER TEST TEMP 90 DEGREES, PH 7.5, CHLORIDES 500. COMPANY MAN OFFERED SDS
Event	6	Other	Spot Equipment	1/28/2016	13:30:00	USER					1 HT 400 PUMP TRUCK E8, 1 660 BULK TRUCK, 1 550 SERVICE PICKUP
Event	7	Pre-Rig Up Safety Meeting	Pre-Rig Up Safety Meeting	1/28/2016	13:45:00	USER					HES CREW PRESENT
Event	8	Pre-Job Safety Meeting	Pre-Job Safety Meeting	1/28/2016	14:45:00	USER					WITH HES AND RIG CREW
Event	9	Start Job	Start Job	1/28/2016	15:05:51	COM8					TD 1229', TP 1222.66', SJ 46.65', OH 13 ½", CSG 9 5/8" 32.3# H-40, MUD 9.0 PPG
Event	10	Prime Pumps	Prime Lines	1/28/2016	15:06:40	USER	8.33	2.0	27	2	FRESH WATER
Event	11	Test Lines	Test Lines	1/28/2016	15:10:00	COM8			3069		PRESSURE HELD
Event	12	Pump Spacer 1	Pump H2O Spacer	1/28/2016	15:12:15	COM8	8.33	4.0	67	20	FRESH WATER

Event	13	Check Weight	Check weight	1/28/2016	15:17:01	COM8						BALANCED MUD CUP MATCHED RECIRC DENSITY
Event	14	Pump Lead Cement	Pump Lead Cement	1/28/2016	15:21:41	COM8	12.3	8.0	250	64		VariCem GJ1 150 SKS 12.3 PPG, 2.38 YIELD, 13.77 GAL / SK
Event	15	Slow Rate	Slow Rate	1/28/2016	15:28:13	USER						SLOWED TO SWAP TIERS
Event	16	Pump Tail Cement	Pump Tail Cement	1/28/2016	15:31:14	COM8	12.8	8.0	240	66		VariCem GJ1 175 SKS 12.8 PPG, 2.11 YIELD, 11.78 GAL / SK
Event	17	Check Weight	Check weight	1/28/2016	15:33:01	COM8						BALANCED MUD CUP MATCHED RECIRC DENSITY
Event	18	Slow Rate	Slow Rate	1/28/2016	15:39:25	USER						SLOWED TO END CMT
Event	19	Shutdown	Shutdown	1/28/2016	15:42:08	USER						END OF CMT WASHING UP ON TOP OF PLUG
Event	20	Drop Top Plug	Drop Top Plug	1/28/2016	15:49:25	USER						VERIFIED BY FLAG INDICATOR
Event	21	Pump Displacement	Pump Displacement	1/28/2016	15:50:12	COM8	8.33	9.0	420	83		FRESH WATER
Event	22	Slow Rate	Slow Rate	1/28/2016	16:01:57	USER	8.33	2.0	260	10		SLOWED TO BUMP PLUG
Event	23	Bump Plug	Bump Plug	1/28/2016	16:05:52	USER	8.33	2.0	300	93		PLUG BUMPED
Event	24	Check Floats	Check Floats	1/28/2016	16:08:31	USER			966			FLOATS HELD. 1/2 BBL FLOW BACK
Event	25	End Job	End Job	1/28/2016	16:09:32	USER						17 BBLS OF CMT TO SURFACE USED 20 LBS SUGAR
Event	26	Pre-Rig Down Safety Meeting	Pre-Rig Down Safety Meeting	1/28/2016	16:15:00	USER						ALL HES CREW PRESENT
Event	27	Rig-Down Completed	Rig-Down Completed	1/28/2016	17:30:00	USER						NO INJURIES TO REPORT
Event	28	Pre-Convoy Safety Meeting	Pre-Convoy Safety Meeting	1/28/2016	17:45:00	USER						NO EQUIPMENT LEFT BEHIND

Event	29	Crew Leave Location	Crew Leave Location	1/28/2016	18:00:00	USER	THANK YOU.
-------	----	---------------------	---------------------	-----------	----------	------	------------

WPX - FED RU 342-8 - 9 5/8" SURFACE



- | | | | | | |
|---|-----------------------------|--------------------|--------------------|----------------------|--------------------------------|
| ① Call Out | ⑥ Spot Equipment | ⑪ Test Lines | ⑯ Pump Tail Cement | 21 Pump Displacement | 26 Pre-Rig Down Safety Meeting |
| ② Pre-Convoy Safety Meeting | ⑦ Pre-Rig Up Safety Meeting | ⑫ Pump H2O Spacer | ⑰ Check weight | 22 Slow Rate | 27 Rig-Down Completed |
| ③ Crew Leave Yard | ⑧ Pre-Job Safety Meeting | ⑬ Check weight | ⑱ Slow Rate | 23 Bump Plug | 28 Pre-Convoy Safety Meeting |
| ④ Arrive At Loc | ⑨ Start Job | ⑭ Pump Lead Cement | ⑲ Shutdown | 24 Check Floats | 29 Crew Leave Location |
| ⑤ Assessment Of Location Safety Meeting | ⑩ Prime Lines | ⑮ Slow Rate | 20 Drop Top Plug | 25 End Job | |

▼ **HALLIBURTON** | iCem® Service

Created: 2016-01-28 14:00:01, Version: 4.2.393

Edit

Customer: WPX ENERGY ROCKY MOUNTAIN LLC-EBUS

Job Date: 1/28/2016

Well: RU 342-8

Representative: TED RAGSDALE

Sales Order #: 903080130

ELITE 8: DUSTIN HYDE / DIRK BRENNECKE

WPX - FED RU 342-8 - 9 5/8" SURFACE

