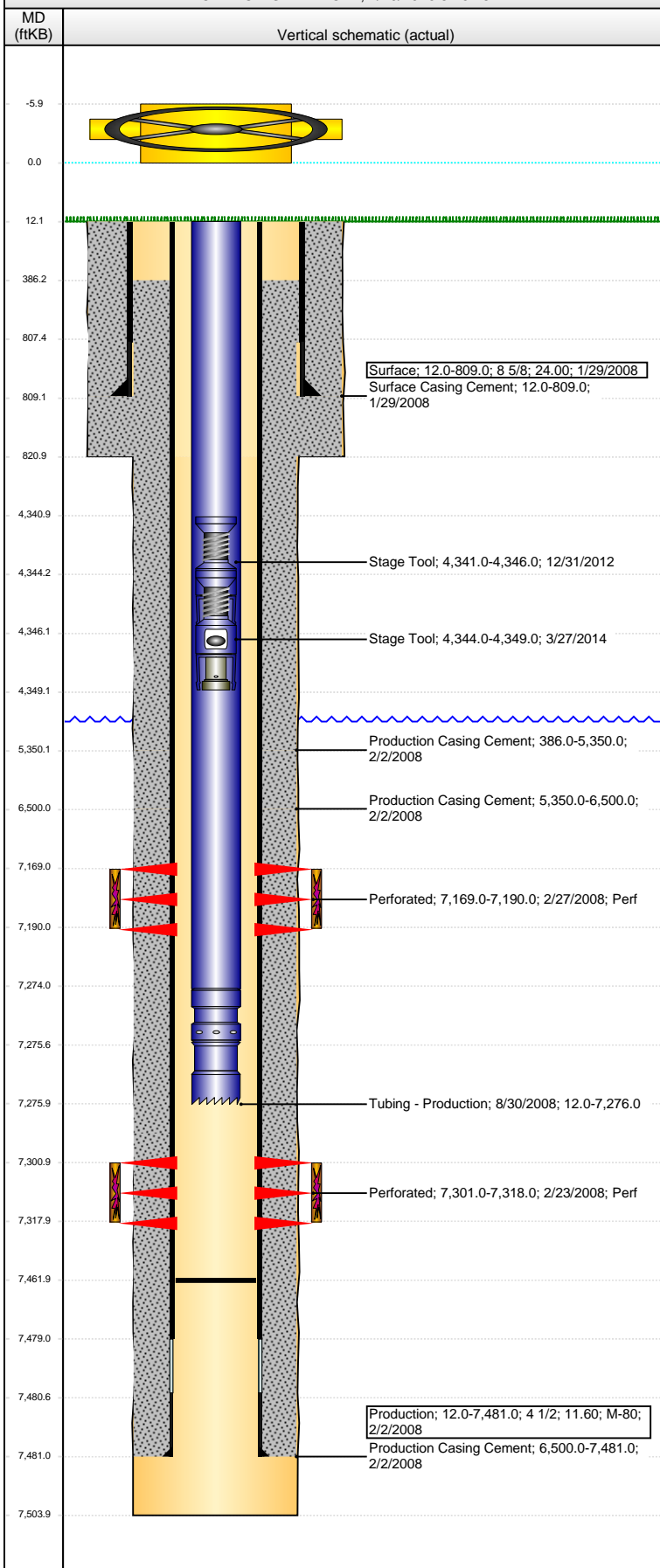


**Well Name: HAYTHORN 4-12**

VERTICAL - ORIGINAL HOLE, 4/20/2016 8:46:28 AM



## Well Header

API	Business Unit	District	Well Config
05-123-26669	DJ BASIN	15	VERTICAL
Original KB Elevation (ft)	KB - GL / MSL (ftKB)	Spud Date	P & A Date
4,853	12.00	1/28/2008	

Comment  
DISCREPANCY ON P CSG SET DEPTH: CBL @ 7452, COMP RPT/DRL RPT 7481 USED THIS

Directions To Well

## Congressional Location

Quarter 1	Quarter 2	Quarter 3	Quarter 4	Section	Township	Twnshp N...	Range	Rng E/W Dir
		NW	NE	4	6	N	66	W

## Bottom Hole Location

North-South Distance (ft)	From N or S Line	East-West Distance (ft)	From E or W Line
---------------------------	------------------	-------------------------	------------------

## Plug Back Total Depths

Date	Depth (ftKB)	Method	Com
2/20/2008	7,452.0	CASED HOLE LOG	DEPTH LOGGER ON CBL
8/30/2008	7,462.0	TAG	C/O TO 7462 TO LAND TBG

## Wellbore Sections

Section Des	Size (in)	Act Top, MD (ftKB)	Act Btm, MD (ftKB)
SURFACE	12 1/4	12.0	821.0
PRODUCTION	7 7/8	821.0	7,504.0

## Zone Statuses

Zone Name	Status Date	Status	Fluid Type	Job	Prod Method
CODELL	3/3/2008	PR	Oil	DRILLING/CO...	
NIOBRARA	3/3/2008	PR	Oil	DRILLING/CO...	

## Casing Strings

### Surface, 809.0ftKB

Casing Description	Run Date	OD (in)	Wt/Len (l...)	Grade	Top, MD (ft...)	MD (ftKB)
Surface	1/29/2008	8 5/8	24.00		12.0	809.0

### Production, 7,481.0ftKB

Casing Description	Run Date	OD (in)	Wt/Len (l...)	Grade	Top, MD (ft...)	MD (ftKB)
Production	2/2/2008	4 1/2	11.60	M-80	12.0	7,481.0

## Cement

Description	Top Depth (ftKB)	Bottom Depth (ftKB)
Surface Casing Cement	12.0	809.0
Production Casing Cement	386.0	5,350.0
Production Casing Cement	5,350.0	6,500.0
Production Casing Cement	6,500.0	7,481.0

## Tubing Strings

Tubing Description	Run Date	String...	ID (in)	Wt (lb/ft)	Grade	Len (ft)	Set De...
Tubing - Production	8/30/2008	2 3/8				7,264.00	

## Tubing Components

Item Des	OD (in)	Wt (lb/ft)	Grade	Jts	Len (ft)	Btm (ftKB)	Btm (TVD) (ftKB)
EUE 8rd Tubing	2 3/8			237	7,262.00	7,274.0	
Seal Nipple	2 3/8			1	1.50	7,275.5	
Notched collar	2 3/8			1	0.50	7,276.0	

## Perforation Data

Zone	Bnch/St g	Entered Shot Total	Top (ftKB)	Btm (ftKB)	Date
NIOBRARA, ORIGINAL HOLE	B	84	7,169.00	7,190.00	2/27/2008
CODELL, ORIGINAL HOLE		68	7,301.00	7,318.00	2/23/2008

## Stimulations & Treatments

Date	Zone	Primary Job Type
2/27/2008	CODELL, ORIGINAL HOLE	DRILLING/COMPLETION - ORIGINAL
Technical Result	Tech Result Details	Tech Result Note

Comment

**Well Name: HAYTHORN 4-12**

VERTICAL - ORIGINAL HOLE, 4/20/2016 8:46:30 AM

## Stimulations & Treatments

Date 2/27/2008	Zone NIOBRARA, ORIGINAL HOLE	Primary Job Type DRILLING/COMPLETION - ORIGINAL
Technical Result	Tech Result Details	Tech Result Note
Comment		

## Other In Hole

Run Date	Des	OD (in)	Top (ftKB)	Btm (ftKB)
12/31/2012	Stage Tool	2	4,341.0	4,346.0
3/27/2014	Stage Tool	2	4,344.0	4,349.0

## Logs

Date	Type	Top, MD (ftKB)	Btm, MD (ftKB)
2/1/2008	COMPENSATED DENSITY	3,650.0	7,490.0
2/1/2008	INDUCTION	809.0	7,510.0
2/20/2008	CBL/CCL/GR	386.0	7,452.0
4/4/2016	GYRO	0.0	7,200.0

