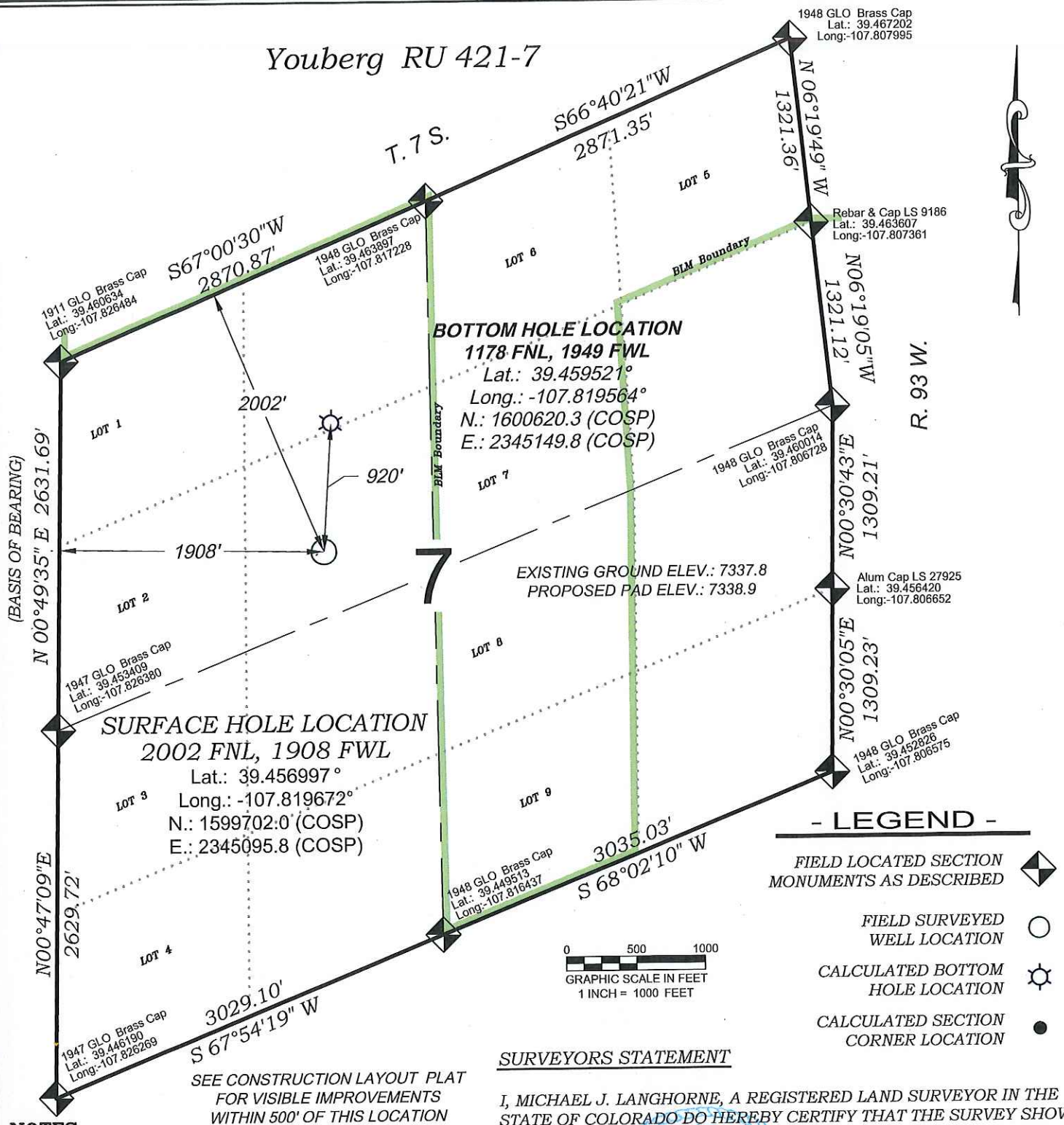


Youberg RU 421-7



NOTES

- 1) ELEVATIONS BASED ON N.A.V.D. 1988 PUBLISHED COORDINATES.
- 2) LATITUDES AND LONGITUDES ARE BASE ON NAD 83,
PUBLISHED COORDINATES
- 3) STATE PLANE COORDINATES ARE BASED ON COLORADO
CENTRAL ZONE, U.S. SURVEY FEET.
- 4) ELEVATION MASK SET TO 15°
- 5) GPS OPERATOR J. KIRKPATRICK, OBSERVED A PDOP 2.9 ON
SURVEY POINT NUMBER 94875.
- 6) SURFACE AND BOTTOM HOLE LOCATIONS ARE MEASURED 90°
FROM SECTION LINES.

REFERENCES

- 1) RESURVEY T. 7 S., R. 935 W., 6th P.M (BLM PLAT)
2) U.S.G.S. QUAD: NORTH MAMM PEAK, CO

SURVEYORS STATEMENT

I, MICHAEL J. LANGHORNE, A REGISTERED LAND SURVEYOR IN THE STATE OF COLORADO DO HEREBY CERTIFY THAT THE SURVEY SHOWN HEREON WAS PREPARED UNDER MY DIRECT SUPERVISION AND HAS BEEN STAKED ON THE GROUND AS SHOWN ON THE PLAT AND CHECKING THAT THIS MAP IS A TRUE REPRESENTATION THEREOF.

MICHAEL J. LANGHORNE, COLORADO REGISTRATION NO. 36572
FOR AND ON BEHALF OF
BOOKCLIFF SURVEY SERVICES, INC.

REVISED: 3/31/16

SURVEY DATE: 12/10/08
 MAP DATE: 2/24/16
 SCALE: 1" = 1000'
 PLAT: 1 of 1
 PROJECT: Valley

WELL LOCATION PLAT Prepared for:
WPX ENERGY. WPX Energy Rocky Mountain, LLC

SE1/4 NW1/4, SECTION 7
T. 7 S., R. 93 W. of the 6th. P.M.
GARFIELD COUNTY, COLORADO