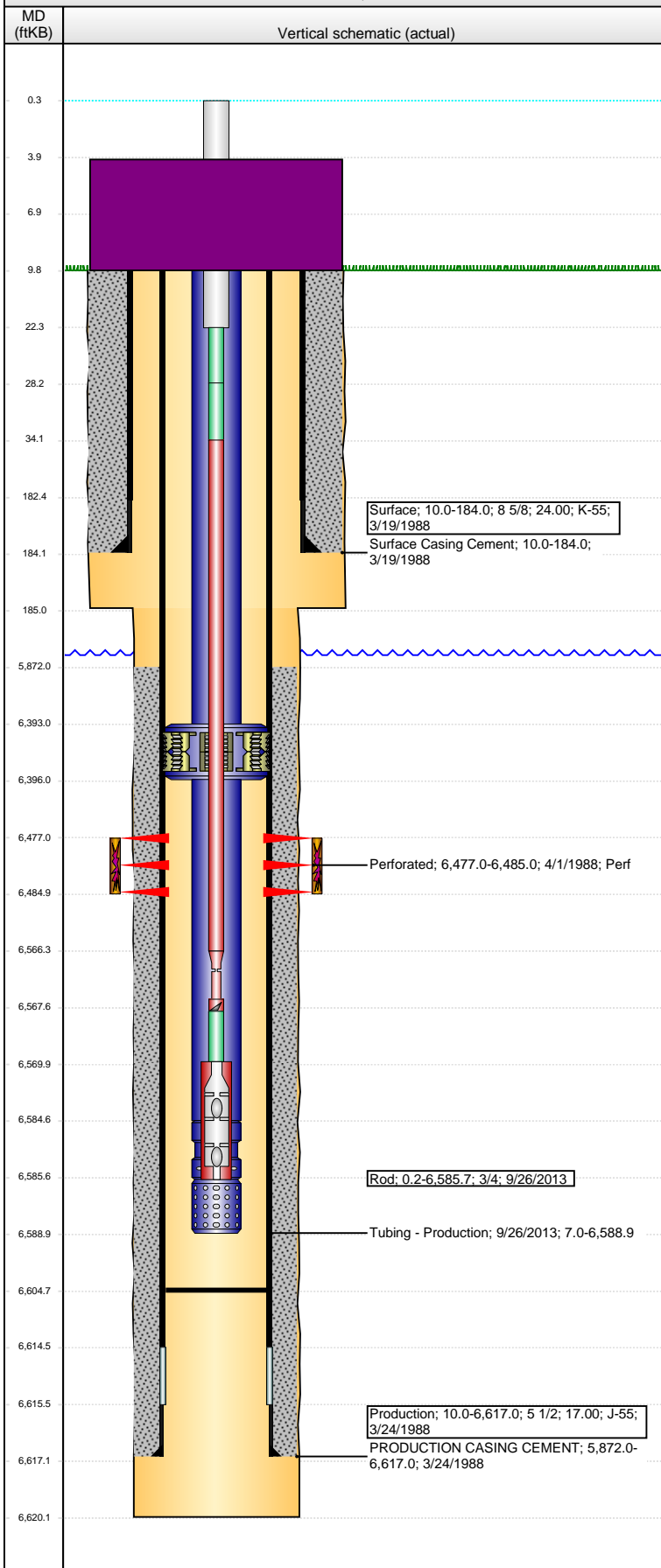


Well Name: LILLI UNIT 10-06

VERTICAL - ORIGINAL HOLE, 4/18/2016 3:19:06 PM



Well Header

API 05-123-13861	Business Unit DJ BASIN	District 25	Well Config VERTICAL
Original KB Elevation (ft) 4,812	KB - GL / MSL (ftKB) 10.00	Spud Date 3/19/1988	P & A Date

Comment

Directions To Well

COLORADO HIWAY 14 & WCR 129, NORTH - 5.2 MILES, WEST - 2.8 MILES, NORTH - 0.4 MILE AND WEST - 0.3 MILE INTO.

Congressional Location

Quarter 1	Quarter 2	Quarter 3	Quarter 4	Section	Township	Twnshp N...	Range	Rng E/W Dir
		NW	SE	6	8	N	58	W

Bottom Hole Location

North-South Distance (ft)	From N or S Line	East-West Distance (ft)	From E or W Line
---------------------------	------------------	-------------------------	------------------

Plug Back Total Depths

Date	Depth (ftKB)	Method	Com
3/24/1988	6,604.5	CASING TALLY	TOP OF FLOAT COLLAR
3/30/1988	6,590.0	CASED HOLE LOG	CBL DEPTH LOGGER
10/5/2009	6,599.0	TAG	TAGGED BOTTOM WITH TUBING
9/20/2013	6,604.5	TAG	TBG TALLY MEASUREMENT.

Wellbore Sections

Section Des	Size (in)	Act Top, MD (ftKB)	Act Btm, MD (ftKB)
SURFACE	12 1/4	10.0	185.0
PRODUCTION	7 7/8	185.0	6,620.0

Zone Statuses

Zone Name	Status Date	Status	Fluid Type	Job	Prod Method
D SAND	5/13/1988	PR		DRILLING/CO...	

Casing Strings

Surface, 184.0ftKB

Casing Description	Run Date	OD (in)	Wt/Len (l...	Grade	Top, MD (ft...	MD (ftKB)
Surface	3/19/1988	8 5/8	24.00	K-55	10.0	184.0

Production, 6,617.0ftKB

Casing Description	Run Date	OD (in)	Wt/Len (l...	Grade	Top, MD (ft...	MD (ftKB)
Production	3/24/1988	5 1/2	17.00	J-55	10.0	6,617.0

Cement

Description	Top Depth (ftKB)	Bottom Depth (ftKB)
Surface Casing Cement	10.0	184.0
Description	Top Depth (ftKB)	Bottom Depth (ftKB)
PRODUCTION CASING CEMENT	5,872.0	6,617.0

Tubing Strings

Tubing Description	Run Date	String...	ID (in)	Wt (lb/ft)	Grade	Len (ft)	Set De...
Tubing	5/8/2008	2 3/8				6,566.00	
Tubing Description	Run Date	String...	ID (in)	Wt (lb/ft)	Grade	Len (ft)	Set De...
Tubing - Production	9/27/2012	2 3/8	1.995	4.70	J-55	6,574.69	
Tubing Description	Run Date	String...	ID (in)	Wt (lb/ft)	Grade	Len (ft)	Set De...
Tubing - Production	9/26/2013	2 3/8	1.995	4.70	J-55	6,581.88	

Tubing Components

Item Des	OD (in)	Wt (lb/ft)	Grade	Jts	Len (ft)	Btm (ftKB)	Btm (TVD) (ftKB)
Stretch Correction	2 3/8	4.70	J-55	1	3.00	10.0	
EUE 8rd Tubing	2 3/8	4.70	J-55	203	6,383.06	6,393.1	
Anchor/catcher	4.99	0.00	X	1	2.90	6,396.0	
EUE 8rd Tubing	2 3/8	4.70	J-55	6	188.64	6,584.6	
Pump Seating Nipple	2 3/8	4.70	N-80	1	1.13	6,585.7	
Perforated Joint	2 3/8	4.70	J-55	1	3.15	6,588.9	

Rods & Pumps

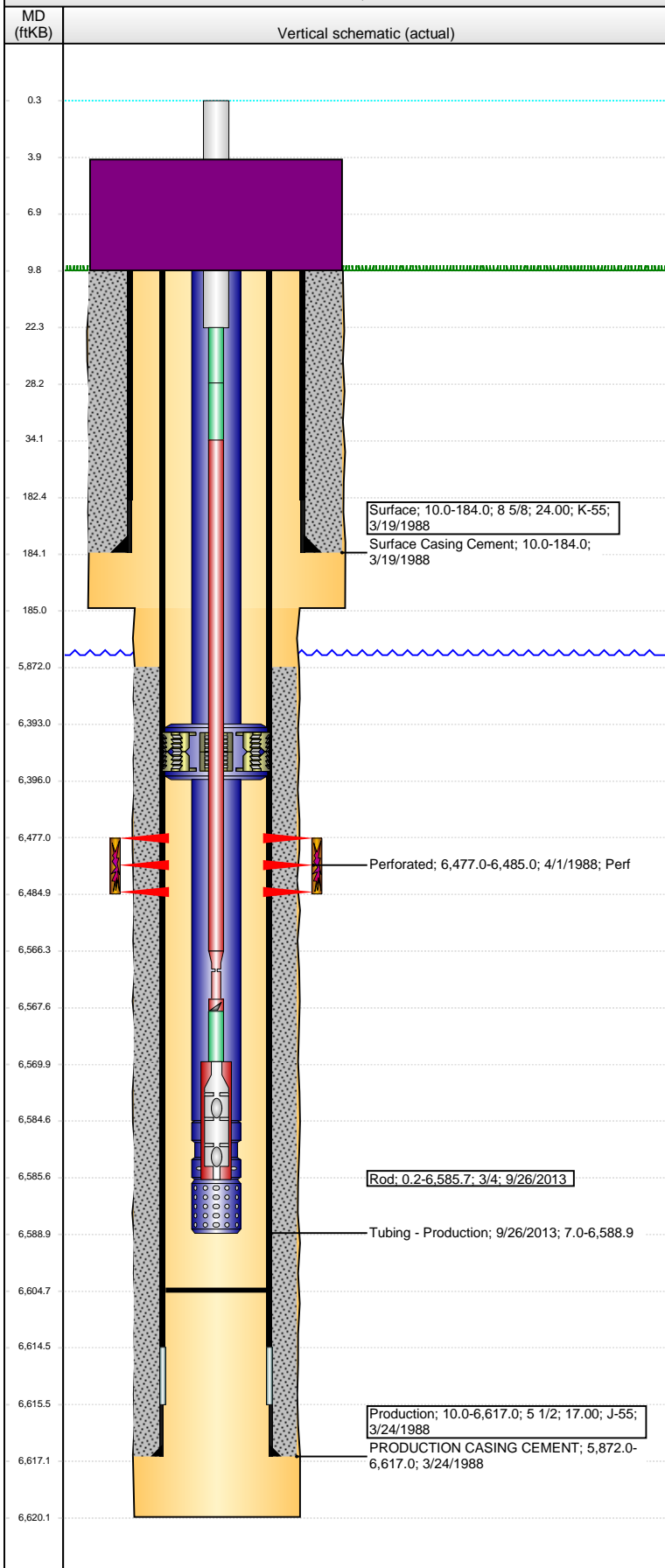
Rod Description	Run Date	Set Depth (ftKB)
Rod	9/26/2013	6,585.7

Comment

Item Description	OD Nominal (in)	Joints	Length (ft)
Polished Rod	1 1/4	1	22.00
Item Description	OD Nominal (in)	Joints	Length (ft)
Pony Rod	3/4	1	6.00

Well Name: LILLI UNIT 10-06

VERTICAL - ORIGINAL HOLE, 4/18/2016 3:19:08 PM



Item Description	OD Nominal (in)	Joints	Length (ft)
Pony Rod	3/4	1	6.00
Item Description	OD Nominal (in)	Joints	Length (ft)
Sucker Rod	3/4	260	6,532.00
Item Description	OD Nominal (in)	Joints	Length (ft)
Hooks Tool	3/4	1	1.50
Item Description	OD Nominal (in)	Joints	Length (ft)
Pony Rod	3/4	1	2.00
Item Description	OD Nominal (in)	Joints	Length (ft)
Rod Insert Pump	1 1/2	1	16.00
API Pump Type	Barrel Length (ft)	Seating Assembly Type	
R	16.00	C	
Perforation Data			
Zone	Bnch/St g	Entered Shot Total	Top (ftKB)
D SAND, ORIGINAL HOLE		17	6,477.00
		Btm (ftKB)	Date
		6,485.00	4/1/1988
Stimulations & Treatments			
Date	Zone	Primary Job Type	
4/5/1988	D SAND, ORIGINAL HOLE	DRILLING/COMPLETION - ORIGINAL	
Technical Result		Tech Result Details	Tech Result Note
Comment			
Other In Hole			
Run Date	Des	OD (in)	Top (ftKB)
			Btm (ftKB)
Logs			
Date	Type	Top, MD (ftKB)	Btm, MD (ftKB)
3/23/1988	COMPENSATED DENSITY	5,645.0	6,602.0
3/23/1988	INDUCTION	184.0	6,620.0
3/23/1988	RESISTIVITY	5,645.0	6,592.0