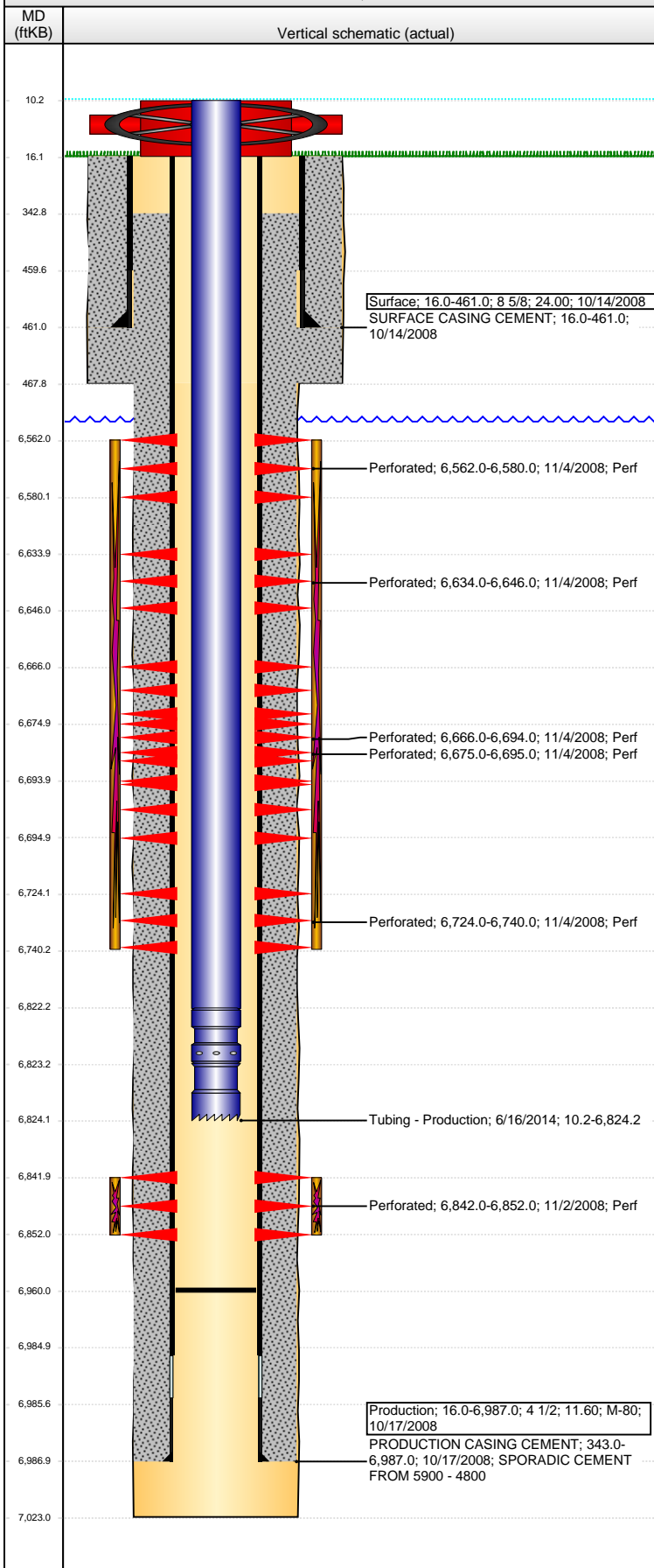


Well Name: FOSS 06-45

VERTICAL - ORIGINAL HOLE, 4/18/2016 2:27:19 PM



Well Header

API	Business Unit	District	Well Config
05-123-24289	DJ BASIN	15	VERTICAL
Original KB Elevation (ft)	KB - GL / MSL (ftKB)	Spud Date	P & A Date
4,711	16.00	10/13/2008	

Comment

Directions To Well

74 & 63, S 1/2, W 3/10, S 3/10 INTO

Congressional Location

Quarter 1	Quarter 2	Quarter 3	Quarter 4	Section	Township	Twnshp N...	Range	Rng E/W Dir
		SW	SE	6	6	N	63	W

Bottom Hole Location

North-South Distance (ft)	From N or S Line	East-West Distance (ft)	From E or W Line

Plug Back Total Depths

Date	Depth (ftKB)	Method	Com
10/17/2008	6,967.0	TAG	FLOAT SHOE W/ BAFFLE
10/29/2008	6,937.0	CASED HOLE LOG	DEPTH LOGGER ON CBL
5/6/2009	6,960.0	TAG	CLEAN OUT TO LAND TUBING

Wellbore Sections

Section Des	Size (in)	Act Top, MD (ftKB)	Act Btm, MD (ftKB)
SURFACE	12 1/4	16.0	468.0
PRODUCTION	7 7/8	468.0	7,023.0

Zone Statuses

Zone Name	Status Date	Status	Fluid Type	Job	Prod Method
CODELL	12/3/2008	PR		DRILLING/CO...	
NIOBRARA	12/3/2008	PR		DRILLING/CO...	

Casing Strings

Surface, 461.0ftKB

Casing Description	Run Date	OD (in)	Wt/Len (l...	Grade	Top, MD (ft...	MD (ftKB)
Surface	10/14/2008	8 5/8	24.00		16.0	461.0

Production, 6,987.0ftKB

Casing Description	Run Date	OD (in)	Wt/Len (l...	Grade	Top, MD (ft...	MD (ftKB)
Production	10/17/2008	4 1/2	11.60	M-80	16.0	6,987.0

Cement

Description	Top Depth (ftKB)	Bottom Depth (ftKB)
SURFACE CASING CEMENT	16.0	461.0
Description	Top Depth (ftKB)	Bottom Depth (ftKB)
PRODUCTION CASING CEMENT	343.0	6,987.0

Tubing Strings

Tubing Description	Run Date	String...	ID (in)	Wt (lb/ft)	Grade	Len (ft)	Set De...
Tubing	5/7/2009	2 3/8				6,803.00	
Tubing Description	Run Date	String...	ID (in)	Wt (lb/ft)	Grade	Len (ft)	Set De...
Tubing - Production	6/16/2014	2 3/8	1.995	4.70	J-55	6,814.00	

Tubing Components

Item Des	OD (in)	Wt (lb/ft)	Grade	Jts	Len (ft)	Btm (ftKB)	Btm (TVD) (ftKB)
EUE 8rd Tubing	2 3/8	4.70	J-55	210	6,812.00	6,822.2	
Seal Nipple	2 3/8			1	1.00	6,823.2	
Notched collar	2 3/8			1	1.00	6,824.2	

Perforation Data

Zone	Bnch/St g	Entered Shot Total	Top (ftKB)	Btm (ftKB)	Date
NIOBRARA, ORIGINAL HOLE	A		6,562.00	6,580.00	11/4/2008
NIOBRARA, ORIGINAL HOLE	B		6,634.00	6,646.00	11/4/2008
NIOBRARA, ORIGINAL HOLE	B		6,666.00	6,694.00	11/4/2008
NIOBRARA, ORIGINAL HOLE	B		6,675.00	6,695.00	11/4/2008
NIOBRARA, ORIGINAL HOLE	C		6,724.00	6,740.00	11/4/2008
CODELL, ORIGINAL HOLE		40	6,842.00	6,852.00	11/2/2008

Stimulations & Treatments

Date	Zone	Primary Job Type	
11/4/2008	CODELL, ORIGINAL HOLE	DRILLING/COMPLETION - ORIGINAL	
Technical Result		Tech Result Details	Tech Result Note
Comment			

Well Name: FOSS 06-45

VERTICAL - ORIGINAL HOLE, 4/18/2016 2:27:21 PM

Stimulations & Treatments

Date 11/4/2008	Zone NIOBRARA, ORIGINAL HOLE	Primary Job Type DRILLING/COMPLETION - ORIGINAL
Technical Result	Tech Result Details	Tech Result Note

Comment

Other In Hole

Run Date	Des	OD (in)	Top (ftKB)	Btm (ftKB)

Logs

Date	Type	Top, MD (ftKB)	Btm, MD (ftKB)
10/17/2008	COMPENSATED DENSITY	3,400.0	6,977.0
10/17/2008	INDUCTION	461.0	6,997.0
10/29/2008	CBL/CCL/GR	0.0	6,936.0
10/23/2013	GYRO	10.0	6,600.0

