

LOCATION DRAWING
NATIONAL HOG FARMS 24-21 PRODUCTION FACILITY

SECTION: 21
TOWNSHIP: 5N
RANGE: 63W

IMPROVEMENTS:
(MEASURED FROM THE NATIONAL HOG FARMS 24-21 REFERENCE POINT)

- BU

NO BUILDING UNITS WITHIN 500' IMPROVEMENT BUFFER
- B

NO BUILDINGS WITHIN 500' IMPROVEMENT BUFFER
- 1

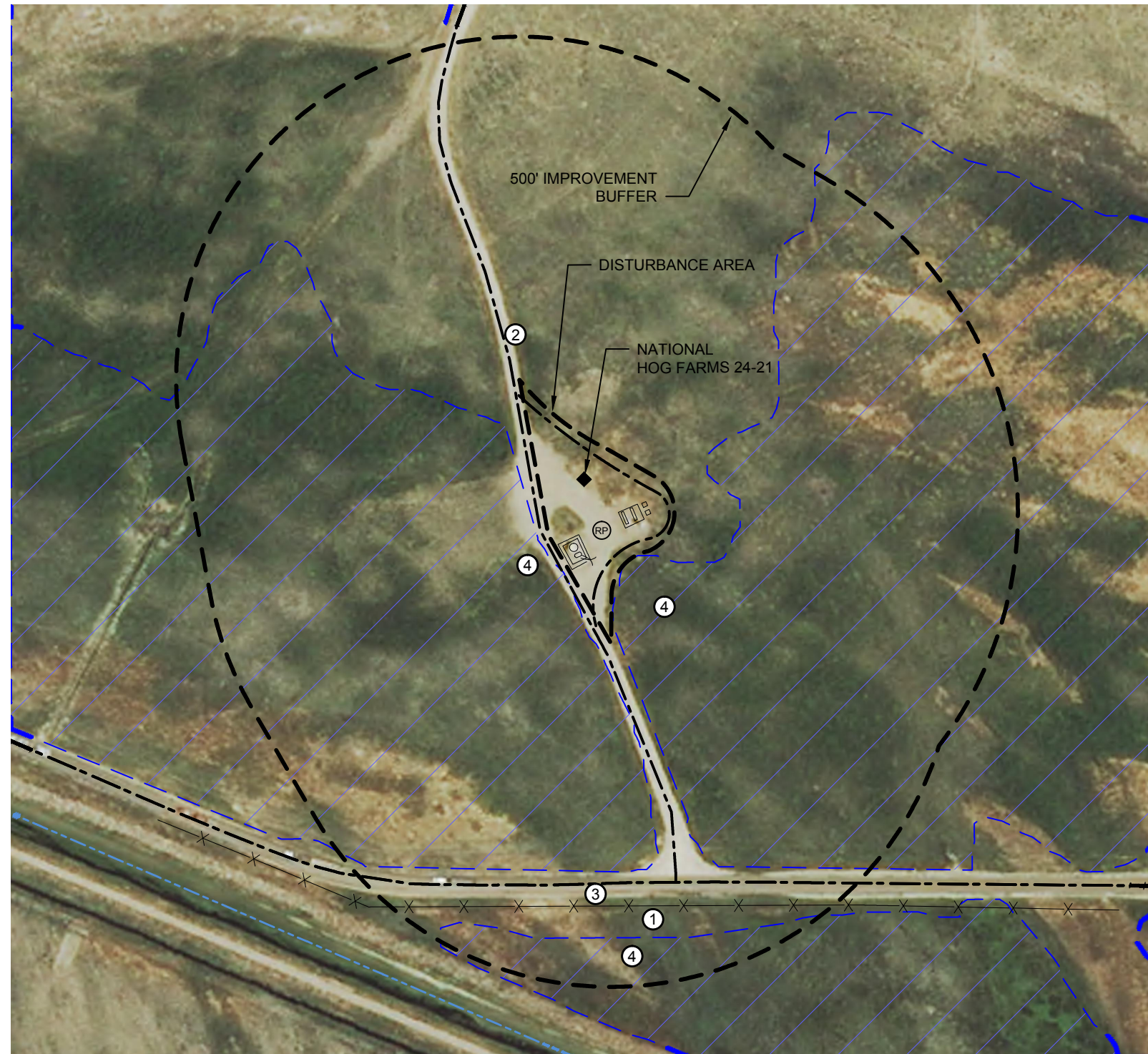
FENCE 547' S
- 2

ACCESS ROAD 79' W
- 3

PRIVATE ROAD 514' S
- 4

WET AREA 58' SE, 82' W, 593' S

FACILITY REFERENCE POINT
LATITUDE: 40.37924°N
LONGITUDE: 104.44253°W
ELEVATION: 4543'
PDOP: 1.5
OPERATOR: SPENCER BURNS
¼ ¼: SE¼ SW¼
FSL: ± 612'
FWL: ± 2268'
ASSOCIATED NEW WELLS:
NONE
ASSOCIATED EXISTING WELLS:
NATIONAL HOG FARMS 24-21



MEASURED FROM THE NEAREST	BUILDING	BUILDING UNIT	HIGH OCCUPANCY BUILDING UNIT	DESIGNATED OUTSIDE ACTIVITY AREA	PUBLIC ROAD	ABOVE GROUND UTILITY	RAILROAD	PROPERTY LINE
EDGE OF DISTURBANCE	2843' E	2896' E	5280'+	5280'+	5280'+ (CO HWY 388)	3399' E	5280'+	447' S
WELLHEAD	2965' NE	3020' NE	5280'+	5280'+	5280'+ (CO HWY 388)	3529' E	5280'+	686' S

FIELD
DATE:
01-11-16

DRAWING
DATE:
03-08-16

DRAWN BY:
KAD

CHECKED BY:
MDC

