

<div><div><div>RMWS</div><div>ROCKY MOUNTAIN WIRELINE SERVICE</div></div></div>				TEMPERATURE CCL LOG			
Company		WPX ENERGY, LLC.		Well		RU 413 - 5	
Field		RULISON		County		GARFIELD	
Location:		API # : 05 - 045 - 22793		State		COLORADO	
SEC 8		TWP 7S		RGE 93W		Other Services NONE	
Permanent Datum		G.L.		Elevation		7736'	
Log Measured From		K.B.		Ft Above PD		24.0'	
Drilling Measured From		K.B.		G.L.		7736'	
Date		12 - 12 - 2015					
Run Number		ONE					
Depth Driller		10263'					
Present Depth Driller		10205'					
Depth Logger		10205'					
Bottom Logged Interval		10205'					
Top Log Interval		SURFACE					
Fluid Level		FULL					
Type Fluid		WATER					
Max. Recorded Temp.		194.5 DEG F					
Estimated Cement Top		5060'					
Equipment Number		219					
Location		GRAND JCT.					
Recorded By		INGRAM				FERNANDEZ	
Witnessed By		MR. TED					
Run Number		Borehole Record		Casing Record			
		Bit From To		Size Weight From To			
				9.625" 36# SURFACE			
				4.500" 11.6# SURFACE			
						10263'	

<<< Fold Here >>>

All interpretations are opinions based on inferences from electrical or other measurements and we cannot and do not guarantee the accuracy or correctness of any interpretation, and we shall not, except in the case of gross or willful negligence on our part, be liable or responsible for any loss, costs, damages, or expenses incurred or sustained by anyone resulting from any interpretation made by any of our officers, agents or employees. These interpretations are also subject to our general terms and conditions set out in our current Price Schedule.

WARRIOR 7.0 SOFTWARE - Comments

NOTE: THERE WAS NO LOG TO DEPTH CORRELATE TO.

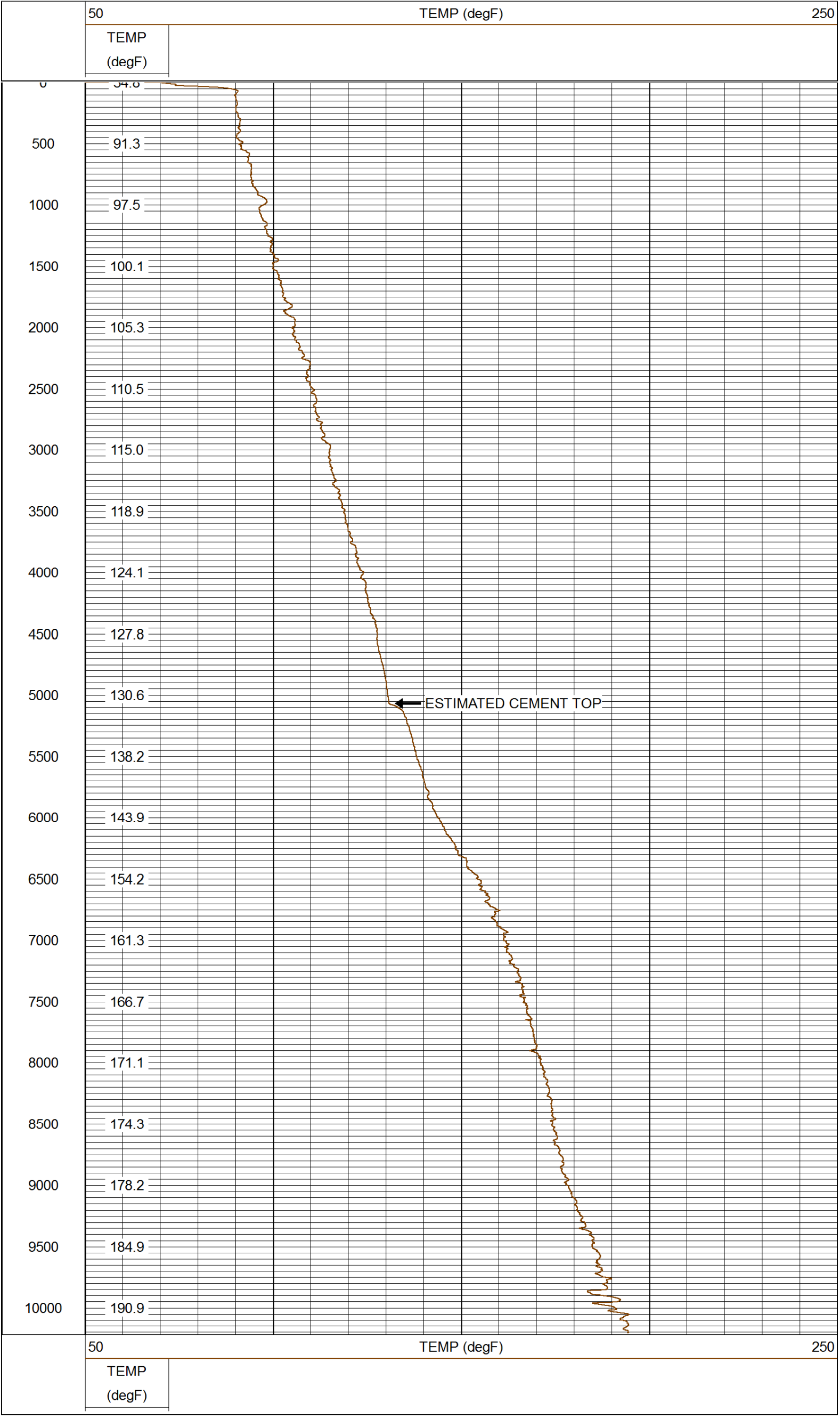
SHORT JOINT: 6302' TO 6324'

CASING PSI = STATIC
MAIN PASS SCALE 5" = 100'



MAIN PASS QUICKLOOK

Database File: 121215_wpxenergy_ru_413_5.db
Dataset Pathname: main/pass4.1
Presentation Format: rmtemp_q
Dataset Creation: Sat Dec 12 18:04:35 2015 by Calc SCH 120430
Charted by: Depth in Feet scaled 1:10000



Company WPX ENERGY, LLC.
Well RU 413 - 5
Field RULISON
County GARFIELD
State COLORADO