

T10N, R57W, 6th P.M.

WHITING OIL & GAS CORP.

Target Bottom Hole

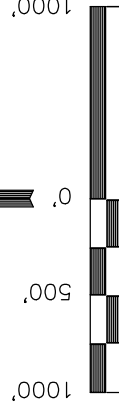
Well location, HORSETAIL #30H-1948 (SURFACE LOCATION), located as shown in the SE 1/4 NE 1/4 of Section 30, T10N, R57W, 6th P.M., Weld County, Colorado.

BASIS OF ELEVATION

SPOT ELEVATION LOCATED AT THE NORTHEAST CORNER OF SECTION 15, T9N, R58W, 6th P.M. TAKEN FROM THE GATEHOOK SPRING, QUADRANGLE, COLORADO, WELD COUNTY, 7.5 MINUTE QUAD (TOPOGRAPHIC MAP) PUBLISHED BY THE UNITED STATES DEPARTMENT OF THE INTERIOR, GEOLOGICAL SURVEY. SAID ELEVATION IS MARKED AS BEING 4679 FEET.

BASIS OF BEARINGS

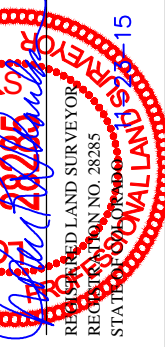
BASIS OF BEARINGS IS A G.P.S. OBSERVATION.



SCALE

CERTIFICATE

THIS IS TO CERTIFY THAT THE ABOVE SURVEY WAS MADE IN ACCORDANCE WITH THE PROVISIONS OF THE SURVEYING ACTS OF 1897 AND 1908, AND THAT THE SAME ARE TRUE AND CORRECT TO THE BEST OF MY KNOWLEDGE AND BELIEF.



REV: 11-23-15 M.F.D.
REV: 04-29-15 J.M.C.

UNTAH ENGINEERING & LAND SURVEYING
85 SOUTH 200 EAST - VERNAL, UTAH 84078
(435) 789-1017

SCALE	1" = 1000'	DATE SURVEYED:	01-15-14	DATE DRAWN:	01-27-14
PARTY	DALLAS NIELSEN	D.S.	H.K.W.	REFERENCES	G.L.O. PLAT
WEATHER	COLD			FILE	WHITING OIL & GAS CORP.

1917 BLM Brass Cap,
Flush W/ Ground
Lat: 40.817025°
Long: 103.784622°

2011 Priv. Alum. Cap,
0.2' High, PLS #28285
Lat: 40.817050°
Long: 103.794247°

1917 Brass Cap,
0.8' High
Lat: 40.809725°
Long: 103.784528°

1917 Brass Cap,
0.4' High
Lat: 40.802425°
Long: 103.784433°

2010 Priv. Alum. Cap,
Flush W/ Ground
Lat: 40.802556°
Long: 103.803722°

1917 Brass Cap,
1.8' High
Lat: 40.802467°
Long: 103.794042°

1917 Brass Cap,
0.2' High
Lat: 40.810000°
Long: 103.785869°

1917 Brass Cap,
0.2' High
Lat: 40.810644°
Long: 103.786708°

1917 Brass Cap,
0.2' High
Lat: 40.810658°
Long: 103.786206°

1917 Brass Cap,
0.2' High
Lat: 40.810658°
Long: 103.786206°

1917 Brass Cap,
0.2' High
Lat: 40.810658°
Long: 103.786206°

1917 Brass Cap,
0.2' High
Lat: 40.810658°
Long: 103.786206°

1917 Brass Cap,
0.2' High
Lat: 40.810658°
Long: 103.786206°

1917 Brass Cap,
0.2' High
Lat: 40.810658°
Long: 103.786206°

1917 Brass Cap,
0.2' High
Lat: 40.810658°
Long: 103.786206°

1917 Brass Cap,
0.2' High
Lat: 40.810658°
Long: 103.786206°

1917 Brass Cap,
0.2' High
Lat: 40.810658°
Long: 103.786206°

1917 Brass Cap,
0.2' High
Lat: 40.810658°
Long: 103.786206°

1917 Brass Cap,
0.2' High
Lat: 40.810658°
Long: 103.786206°

1917 Brass Cap,
0.2' High
Lat: 40.810658°
Long: 103.786206°

1917 Brass Cap,
0.2' High
Lat: 40.810658°
Long: 103.786206°

1917 Brass Cap,
0.2' High
Lat: 40.810658°
Long: 103.786206°

2556' FNL Hand drawn
4/14/16 MLB

HORSETAIL #30H-1948

Elev. Ungraded Ground = 4723'

Top of Production

Top of Production

Top of Production

Top of Production

Top of Production

Top of Production

Top of Production

Top of Production

Top of Production

Top of Production

Top of Production

Top of Production

Top of Production

Top of Production

Top of Production

Top of Production

Top of Production

Top of Production

LINE TABLE		
LINE	DIRECTION	LENGTH
L1	S44°41'33"E	330.58'

NOTE:
THE PROPOSED TARGET BOTTOM HOLE FOR THIS WELL IS LOCATED IN THE NE 1/4 NE 1/4 OF SECTION 19, T10N, R57W, 6th P.M. AT 100' FNL 288' FEL. IT BEARS N00°07'44"W 7776.07' FROM THE PROPOSED TOP OF PRODUCTION.

LEGEND:

- 90° SYMBOL
- PROPOSED WELLHEAD.
- TOP OF PRODUCTION.
- SECTION CORNERS LOCATED.

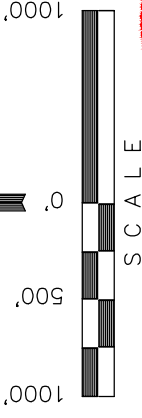
NAD 83 (TOP OF PRODUCTION)	NAD 83 (SURFACE LOCATION)
LATITUDE = 40°48'36.00" (40.810000) LONGITUDE = 103°47'09.13" (103.785869)	LATITUDE = 40°48'38.32" (40.810644) LONGITUDE = 103°47'12.15" (103.786708)
LATITUDE = 40°48'36.05" (40.810014) LONGITUDE = 103°47'07.32" (103.785362)	LATITUDE = 40°48'38.37" (40.810658) LONGITUDE = 103°47'10.34" (103.786206)

WHITING OIL & GAS CORP.

BASIS OF ELEVATION

BASIS OF BEARINGS

BASIS OF BEARINGS IS A G.P.S. OBSERVATION.



CERTIFICATE _____

THIS IS TO CERTIFY THAT THE ABOVE SAID VOTER HAS PREPARED AND SIGNED THE NOTES OF ACTUAL SURVEYS MADE BY ME, UNDER MY SUPERVISOR, AND THAT THE SAME ARE TRUE AND CORRECT TO THE BEST OF MY KNOWLEDGE AND BELIEF.

REV: 11-23-15 MED
REGISTERED LAND SURVEYOR
REGISTRATION NO. 28285
STATE OF COLORADO
11/23/15

UTAH ENGINEERING & LAND SURVEYING
 85 SOUTH 200 EAST - VERNAL, UTAH 84078
 (435) 789-1017

SCALE	1" = 1000'	DATE SURVEYED:	DATE DRAWN:
PARTY		REFERENCES	
DALLAS NIELSEN	D.S.	G.L.O. PLAT	
WEATHER		FILE	
	COLD		WHITING OIL & GAS CORP.

NAD 83 (TARGET BOTTOM HOLE)
LATITUDE = 40°49'52.81" (40.831336)
LONGITUDE = 103°47'09.29" (103.785914)
NAD 27 (TARGET BOTTOM HOLE)
LATITUDE = 40°49'52.87" (40.831353)
LONGITUDE = 103°47'07.49" (103.785414)

LEGEND:

	= 90° SYMBOL
	= TARGET BOTTOM HOLE.
	= TOP OF PRODUCTION.
	= SECTION CORNERS LOCATED.