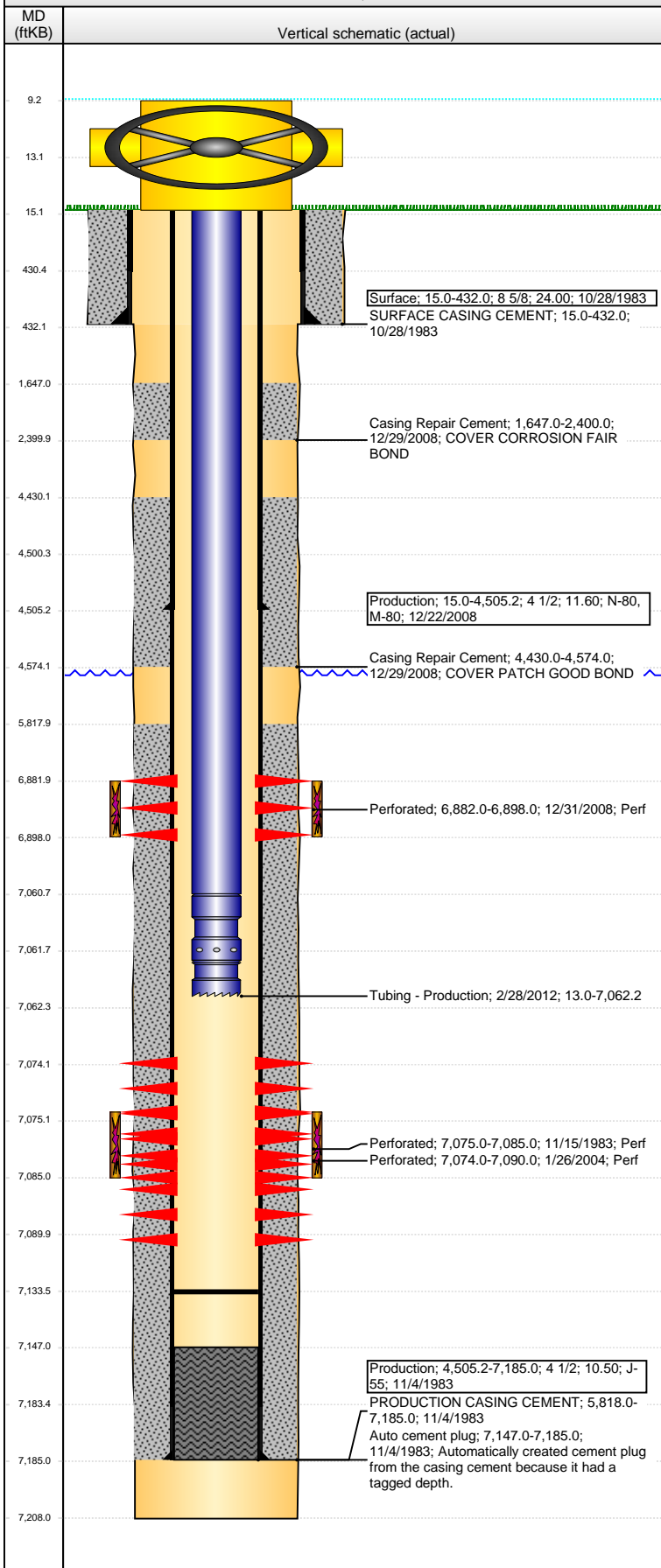


Well Name: **GOETZEL 01-29**

VERTICAL - ORIGINAL HOLE, 3/28/2016 3:37:42 PM



## Well Header

API	Business Unit	District	Well Config
05-123-11325	DJ BASIN	15	VERTICAL
Original KB Elevation (ft)	KB - GL / MSL (ftKB)	Spud Date	P & A Date
4,742	15.00	10/28/1993	

## Comment

FOUND LEAK 1/04, CASING PATCH @ 4500'

## Directions To Well

RD 66 & RD 29. WEST 5/10. SOUTH 5/10. EAST 1/10. NORTH INTO.

## Congressional Location

Quarter 1	Quarter 2	Quarter 3	Quarter 4	Section	Township	Twnshp N...	Range	Rng E/W Dir
		SW	NE	29	6	N	66	W

## Bottom Hole Location

North-South Distance (ft)	From N or S Line	East-West Distance (ft)	From E or W Line
---------------------------	------------------	-------------------------	------------------

## Plug Back Total Depths

Date	Depth (ftKB)	Method	Com
11/4/1983	7,147.0	TAG	
11/15/1983	7,092.0	TAG	WIRELINE TAG
12/31/2008	7,132.0	TAG	TAG WITH BIT & SCRAPER.
2/28/2012	7,133.5	TUBING TALLY	TBG REPAIR TAG FOR FILL

## Wellbore Sections

Section Des	Size (in)	Act Top, MD (ftKB)	Act Btm, MD (ftKB)
SURFACE	12 1/4	15.0	432.0
PRODUCTION	7 7/8	432.0	7,208.0

## Zone Statuses

Zone Name	Status Date	Status	Fluid Type	Job	Prod Method
CODELL	11/18/1983	PR	Gas	DRILLING/CO...	
CODELL	2/12/2004	SI		RE-FRAC, 1/22...	
CODELL	2/9/2009	PR		CASING REPA...	
NIOBRARA	2/9/2009	PR		CASING REPA...	
NIOBRARA	1/30/2010	PR	Water		Flowing
NIOBRARA	7/2/2015	PR			

## Casing Strings

### Surface, 432.0ftKB

Casing Description	Run Date	OD (in)	Wt/Len (l...)	Grade	Top, MD (ft...)	MD (ftKB)
Surface	10/28/1983	8 5/8	24.00		15.0	432.0

### Production, 4,505.2ftKB

Casing Description	Run Date	OD (in)	Wt/Len (l...)	Grade	Top, MD (ft...)	MD (ftKB)
Production	12/22/2008	4 1/2	11.60	M-80	15.0	4,505.2

### Production, 7,185.0ftKB

Casing Description	Run Date	OD (in)	Wt/Len (l...)	Grade	Top, MD (ft...)	MD (ftKB)
Production	11/4/1983	4 1/2	10.50	J-55	15.0	7,185.0

## Cement

Description	Top Depth (ftKB)	Bottom Depth (ftKB)
SURFACE CASING CEMENT	15.0	432.0
PRODUCTION CASING CEMENT	5,818.0	7,185.0
Casing Repair Cement	1,647.0	2,400.0
Casing Repair Cement	4,430.0	4,574.0

## Tubing Strings

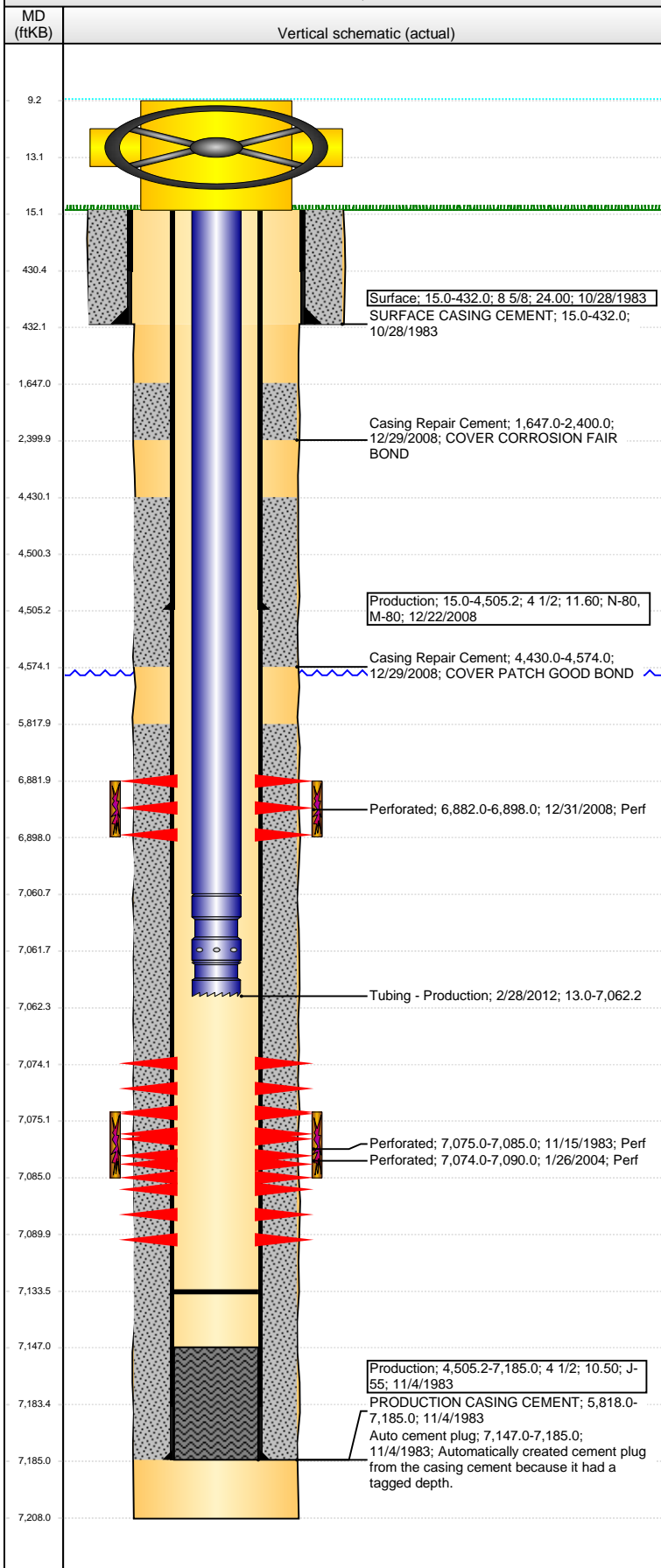
Tubing Description	Run Date	String...	ID (in)	Wt (lb/ft)	Grade	Len (ft)	Set De...
Tubing - Frac string	1/23/2009	2 7/8	2.441	6.50	N-80	6,791.33	
Tubing - Frac string	1/23/2009	2 7/8	2.441	6.50	N-80	6,758.63	
Tubing - Production	2/2/2009	2 3/8	1.995	4.70	J-55	7,049.54	
Tubing - Production	2/28/2012	2 3/8	1.995	4.70	J-55	7,049.21	

## Tubing Components

Item Des	OD (in)	Wt (lb/ft)	Grade	Jts	Len (ft)	Btm (ftKB)	Btm (TVD) (ftKB)
EUE 8rd Tubing	2 3/8	4.70	J-55	230	7,047.71	7,060.7	
Seat Nipple	2 3/8			1	1.10	7,061.8	

**Well Name: GOETZEL 01-29**

VERTICAL - ORIGINAL HOLE, 3/28/2016 3:37:45 PM



Tubing Components							
Item Des	OD (in)	Wt (lb/ft)	Grade	Jts	Len (ft)	Btm (ftKB)	Btm (TVD) (ftKB)
Notched collar	2 3/8	4.70	J-55	1	0.40	7,062.2	

Perforation Data					
Zone	Bnch/St g	Entered Shot Total	Top (ftKB)	Btm (ftKB)	Date
NIOBRARA, ORIGINAL HOLE	B	64	6,882.00	6,898.00	12/31/2008
CODELL, ORIGINAL HOLE		64	7,074.00	7,090.00	1/26/2004
CODELL, ORIGINAL HOLE		40	7,075.00	7,085.00	11/15/1983

Stimulations & Treatments			
Date	Zone	Primary Job Type	
11/16/1983	CODELL, ORIGINAL HOLE	DRILLING/COMPLETION - ORIGINAL	
Technical Result		Tech Result Details	Tech Result Note

Date	Zone	Primary Job Type	
1/22/2009	NIOBRARA, ORIGINAL HOLE	CASING REPAIR	
Technical Result	Tech Result Details		Tech Result Note
Failure	Mechanical		

Comment  
 (NIOBRARA RECOMPLETE): ISIP - 3103 PSI. PACKER FAILURE 74 BBLs INTO JOB. ATTEMPTED TO RE-SEAT PACKER BY SURGING WELL. NO SUCCESS. ABORT JOB.

Date	Zone	Primary Job Type	
1/28/2009	NIOBRARA, ORIGINAL HOLE	CASING REPAIR	
Technical Result	Tech Result Details		Tech Result Note
Success	According to Plan		

Comment  
 (NIOBRARA RECOMPLETE): ISIP - 3115 PSI. TREATMENT WENT WELL. NOLTE FLAT. POST ISIP - 3411 PSI.

Other In Hole				
Run Date	Des	OD (in)	Top (ftKB)	Btm (ftKB)

Logs			
Date	Type	Top, MD (ftKB)	Btm, MD (ftKB)
11/4/1983	COMPENSATED NEUTRON	4,000.0	7,183.0
11/4/1983	INDUCTION	426.0	7,180.0
11/15/1983	CEMENT BOND	5,700.0	7,092.0
12/30/2008	CBL/CCL/GR	1,280.0	6,000.0