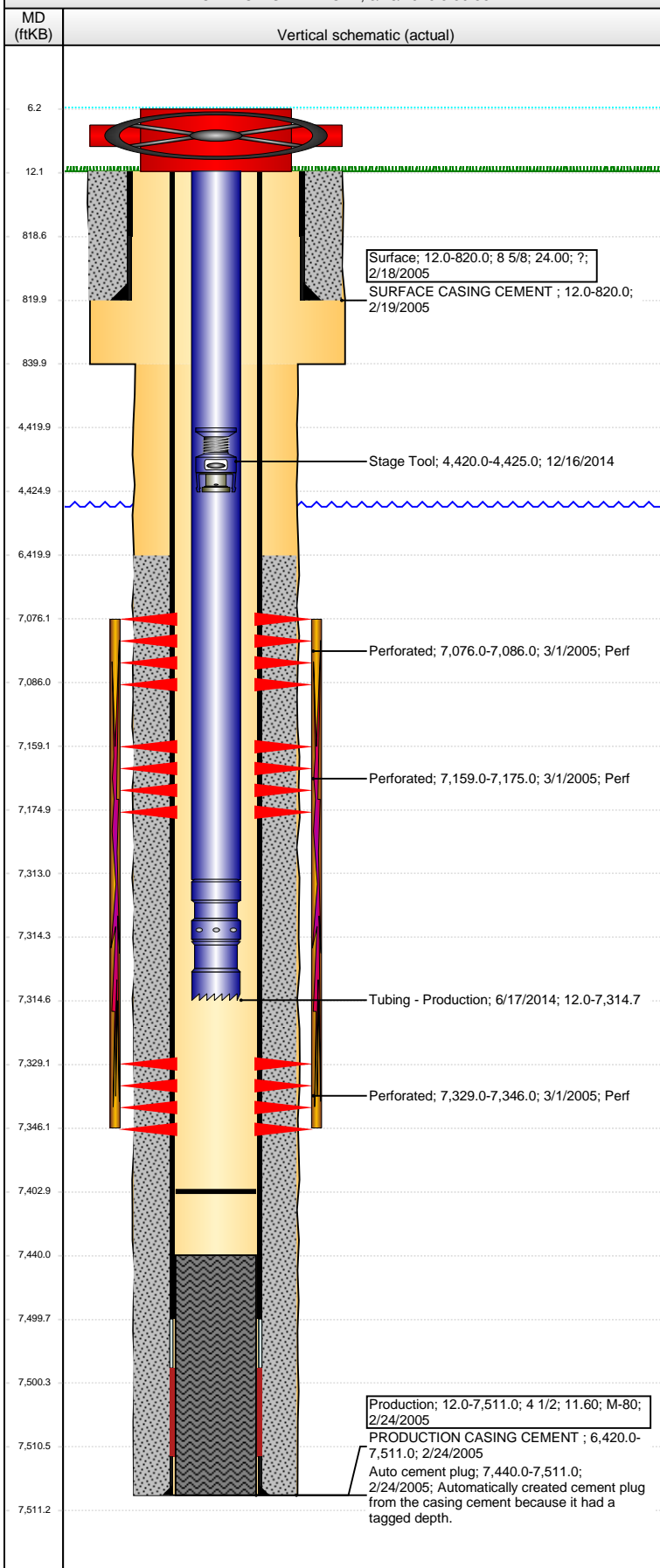


**Well Name: CECIL FARMS 06-11**

VERTICAL - ORIGINAL HOLE, 3/28/2016 3:30:56 PM



## Well Header

API 05-123-22686	Business Unit DJ BASIN	District 15	Well Config VERTICAL
Original KB Elevation (ft) 4,885	KB - GL / MSL (ftKB) 12.00	Spud Date 2/18/2005	P & A Date
Comment			

## Directions To Well

RD 27 & 72, N 7/10, N NW 2/10 INTO.

## Congressional Location

Quarter 1	Quarter 2	Quarter 3	Quarter 4	Section	Township	Twnshp N...	Range	Rng E/W Dir
		NE	NE	6	6	N	66	W

## Bottom Hole Location

North-South Distance (ft)	From N or S Line	East-West Distance (ft)	From E or W Line

## Plug Back Total Depths

Date	Depth (ftKB)	Method	Com
2/24/2005	7,499.8	TAG	SHOE WITH BAFFLE
2/28/2005	7,440.0	CASED HOLE LOG	DEPTH LOGGER FROM CBL
3/4/2014	7,403.0	TAG	

## Wellbore Sections

Section Des	Size (in)	Act Top, MD (ftKB)	Act Btm, MD (ftKB)
SURFACE	12 1/4	12.0	840.0
PRODUCTION	7 7/8	840.0	7,511.0

## Zone Statuses

Zone Name	Status Date	Status	Fluid Type	Job	Prod Method
CODELL	3/9/2005	PR		DRILLING/CO...	
NIOBRARA	3/9/2005	PR		DRILLING/CO...	

## Casing Strings

### Surface, 820.0ftKB

Casing Description	Run Date	OD (in)	Wt/Len (l...	Grade	Top, MD (ft...	MD (ftKB)
Surface	2/18/2005	8 5/8	24.00	?	12.0	820.0

### Production, 7,511.0ftKB

Casing Description	Run Date	OD (in)	Wt/Len (l...	Grade	Top, MD (ft...	MD (ftKB)
Production	2/24/2005	4 1/2	11.60	M-80	12.0	7,511.0

## Cement

Description	Top Depth (ftKB)	Bottom Depth (ftKB)
SURFACE CASING CEMENT	12.0	820.0
PRODUCTION CASING CEMENT	6,420.0	7,511.0

## Tubing Strings

Tubing Description	Run Date	String...	ID (in)	Wt (lb/ft)	Grade	Len (ft)	Set De...
Tubing	5/20/2005	2 3/8	1.867	4.70	?	7,316.00	
Tubing - Production	3/6/2014	2 3/8	1.995	4.70	J-55	6,275.69	
Tubing - Production	6/17/2014	2 3/8	1.995	4.70	J-55	7,302.73	

## Tubing Components

Item Des	OD (in)	Wt (lb/ft)	Grade	Jts	Len (ft)	Btm (ftKB)	Btm (TVD) (ftKB)
Tubing	2 3/8	4.70	J-55	224	7,301.13	7,313.1	
Pump Seating Nipple	2 3/8	1.10	N-80	1	1.20	7,314.3	
Notched collar	2 3/8	4.70	J-55	1	0.40	7,314.7	

## Perforation Data

Zone	Bnch/St g	Entered Shot Total	Top (ftKB)	Btm (ftKB)	Date
NIOBRARA, ORIGINAL HOLE	A		7,076.00	7,086.00	3/1/2005
NIOBRARA, ORIGINAL HOLE	B		7,159.00	7,175.00	3/1/2005
CODELL, ORIGINAL HOLE			7,329.00	7,346.00	3/1/2005

## Stimulations & Treatments

Date	Zone	Primary Job Type
3/2/2005	NIOBRARA-CODELL, ORIGINAL HOLE	
Technical Result	Tech Result Details	Tech Result Note

Comment  
LIMITED ENTRY

**Well Name: CECIL FARMS 06-11**

VERTICAL - ORIGINAL HOLE, 3/28/2016 3:30:59 PM

## Other In Hole

Run Date	Des	OD (in)	Top (ftKB)	Btm (ftKB)
12/16/2014	Stage Tool	2	4,420.0	4,425.0

## Logs

Date	Type	Top, MD (ftKB)	Btm, MD (ftKB)
2/24/2005	COMPENSATED DENSITY	3,700.0	7,491.0
2/24/2005	INDUCTION	832.0	7,511.0
2/28/2005	CBL/CCL/GR	6,300.0	7,438.0
12/30/2013	GYRO	13.0	7,275.0

