

T10N, R57W, 6th. P.M.

WHITING OIL & GAS CORP.

1917 Brass Cap,
Flush with Ground
Lat: 40.817025°
Long: 103.784622°



Target Bottom Hole

1917 Brass Cap,
0.2' High
Lat: 40.817133°
Long: 103.765389°

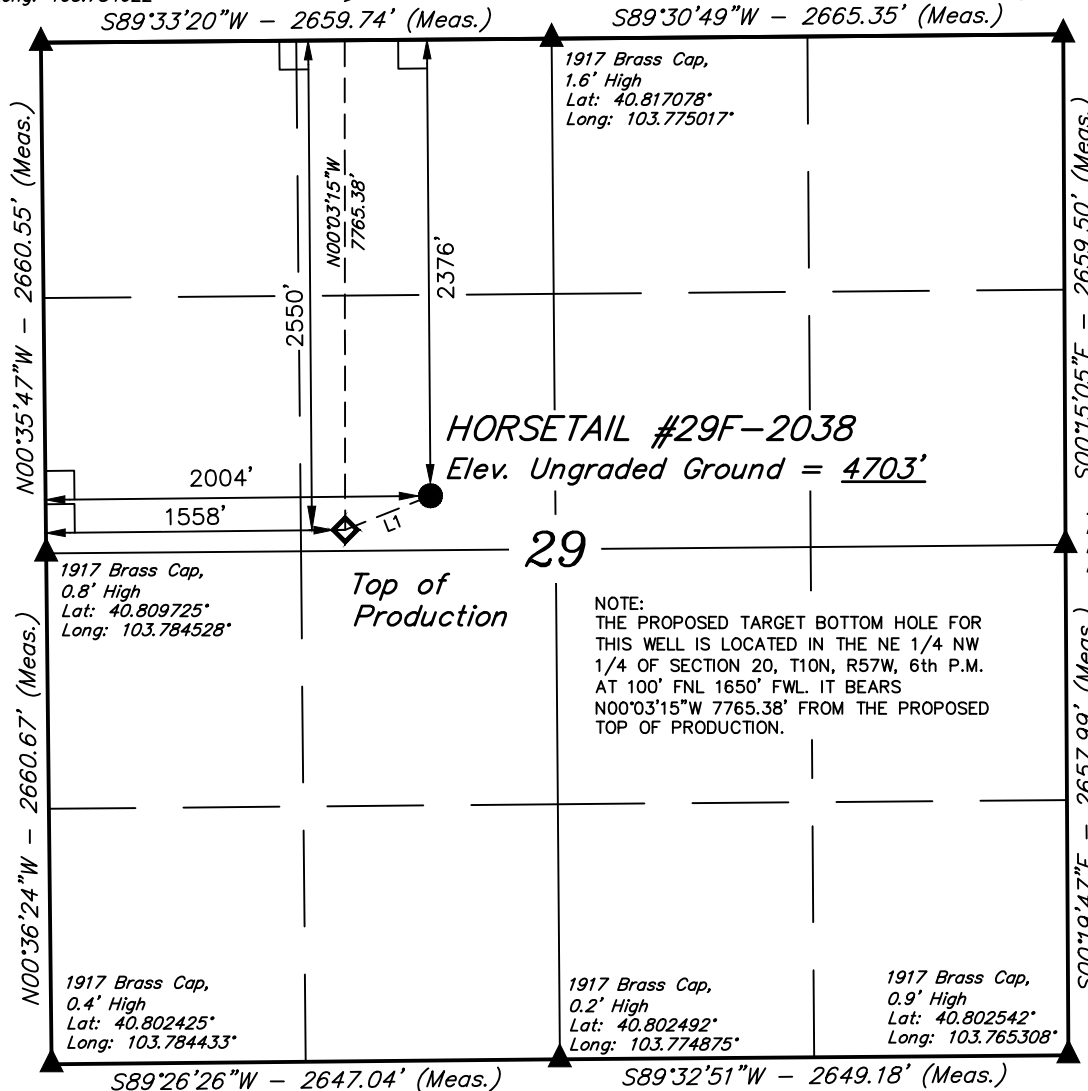
Well location, HORSETAIL #29F-2038 (SURFACE LOCATION), located as shown in the SE 1/4 NW 1/4 of Section 29, T10N, R57W, 6th. P.M., Weld County, Colorado.

BASIS OF ELEVATION

SPOT ELEVATION LOCATED AT THE NORTHEAST CORNER OF SECTION 15, T9N, R58W, 6th P.M. TAKEN FROM THE GATEHOOK SPRING, QUADRANGLE, COLORADO, WELD COUNTY, 7.5 MINUTE QUAD (TOPOGRAPHIC MAP) PUBLISHED BY THE UNITED STATES DEPARTMENT OF THE INTERIOR, GEOLOGICAL SURVEY. SAID ELEVATION IS MARKED AS BEING 4679 FEET.

BASIS OF BEARINGS

BASIS OF BEARINGS IS A G.P.S. OBSERVATION.

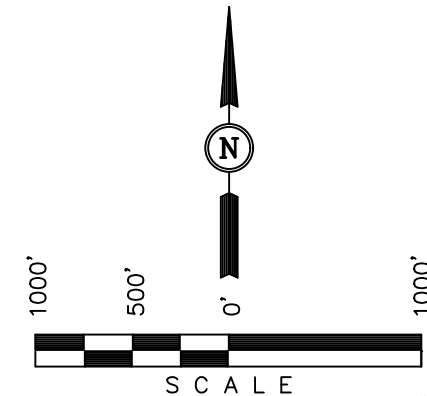


HORSETAIL #29F-2038
Elev. Ungraded Ground = 4703'

Top of Production

NOTE:
THE PROPOSED TARGET BOTTOM HOLE FOR THIS WELL IS LOCATED IN THE NE 1/4 NW 1/4 OF SECTION 20, T10N, R57W, 6th P.M. AT 100' FNL 1650' FWL. IT BEARS N00°03'15"W 7765.38' FROM THE PROPOSED TOP OF PRODUCTION.

2012 Alum Cap,
Flush with Ground
Lat: 40.809836°
Long: 103.765356°



CERTIFICATION

THIS IS TO CERTIFY THAT THE ABOVE PLAT WAS PREPARED FROM FIELD NOTES OF ACTUAL SURVEYS MADE BY ME OR UNDER MY SUPERVISION AND THAT THE SAME ARE TRUE AND CORRECT TO THE BEST OF MY KNOWLEDGE AND BELIEF.

REGISTERED LAND SURVEYOR
REGISTRATION NO. 28285
STATE OF COLORADO
03-07-16

REV: 03-02-16 L.C.S.
REV: 12-17-15 L.C.S.
REV: 07-31-15 N.F.

UINTAH ENGINEERING & LAND SURVEYING
85 SOUTH 200 EAST - VERNAL, UTAH 84078
(435) 789-1017

LEGEND:

- └─┘ = 90° SYMBOL
- = PROPOSED WELL HEAD.
- ◆ = TOP OF PRODUCTION
- ▲ = SECTION CORNERS LOCATED.

LINE TABLE

LINE	DIRECTION	LENGTH
L1	S68°13'55"W	478.56'

PDOP = 1.7

NAD 83 (SURFACE LOCATION)		NAD 83 (PROPOSED TOP OF PRODUCTION)	
LATITUDE	= 40°48'37.96" (40.810544)	LATITUDE	= 40°48'36.21" (40.810058)
LONGITUDE	= 103°46'38.28" (103.777300)	LONGITUDE	= 103°46'44.06" (103.778906)
NAD 27 (SURFACE LOCATION)		NAD 27 (PROPOSED TOP OF PRODUCTION)	
LATITUDE	= 40°48'38.01" (40.810558)	LATITUDE	= 40°48'36.26" (40.810072)
LONGITUDE	= 103°46'35.47" (103.776797)	LONGITUDE	= 103°46'42.25" (103.778403)

SCALE 1" = 1000'	DATE SURVEYED: 07-13-15	DATE DRAWN: 07-14-15
PARTY JARED CHRISTOPHER D.W. C.C.	REFERENCES G.L.O. PLAT	
WEATHER HOT	FILE WHITING OIL & GAS CORP.	

T10N, R57W, 6th. P.M.

WHITING OIL & GAS CORP.

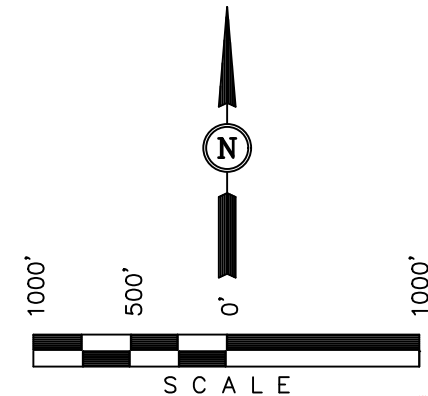
Well location, HORSETAIL #29F-2038 (TARGET BOTTOM HOLE), located as shown in the NE 1/4 NW 1/4 of Section 20, T10N, R57W, 6th. P.M., Weld County, Colorado.

BASIS OF ELEVATION

SPOT ELEVATION LOCATED AT THE NORTHEAST CORNER OF SECTION 15, T9N, R58W, 6th P.M. TAKEN FROM THE GATEHOOK SPRING, QUADRANGLE, COLORADO, WELD COUNTY, 7.5 MINUTE QUAD (TOPOGRAPHIC MAP) PUBLISHED BY THE UNITED STATES DEPARTMENT OF THE INTERIOR, GEOLOGICAL SURVEY. SAID ELEVATION IS MARKED AS BEING 4679 FEET.

BASIS OF BEARINGS

BASIS OF BEARINGS IS A G.P.S. OBSERVATION.



CERTIFICATION

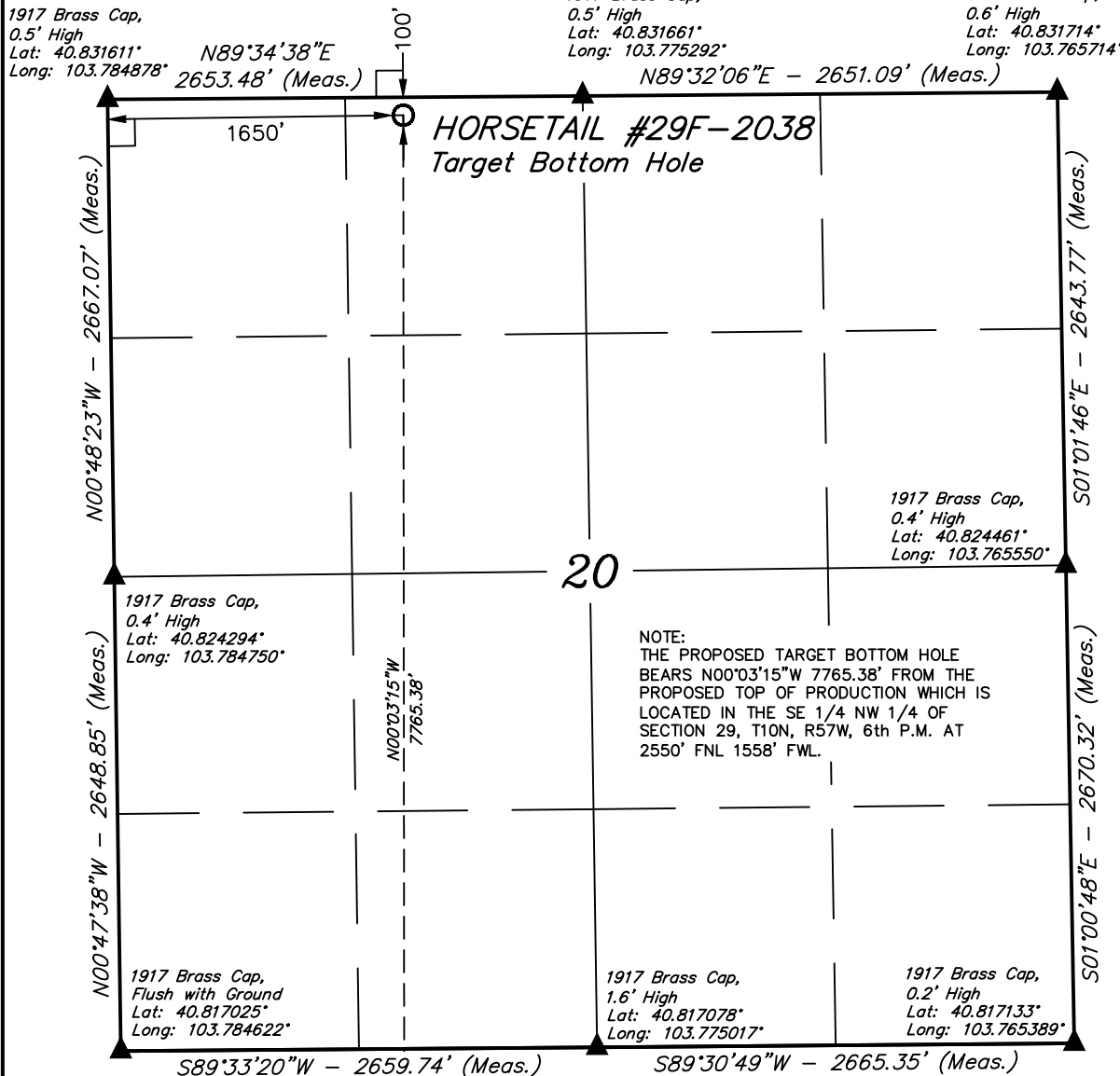
THIS IS TO CERTIFY THAT THE ABOVE PLAT WAS PREPARED FROM FIELD NOTES OF ACTUAL SURVEYS MADE BY ME OR UNDER MY SUPERVISION AND THAT THE SAME ARE TRUE AND CORRECT TO THE BEST OF MY KNOWLEDGE AND BELIEF.

REGISTERED LAND SURVEYOR
REGISTRATION NO. 28285
STATE OF COLORADO 03-07-16

REV: 03-02-16 L.C.S.
REV: 12-17-15 L.C.S.
REV: 07-31-15 N.F.

UINTAH ENGINEERING & LAND SURVEYING
85 SOUTH 200 EAST - VERNAL, UTAH 84078
(435) 789-1017

SCALE 1" = 1000'	DATE SURVEYED: 07-13-15	DATE DRAWN: 07-14-15
PARTY JARED CHRISTOPHER D.W. C.C.	REFERENCES G.L.O. PLAT	
WEATHER HOT	FILE WHITING OIL & GAS CORP.	



LEGEND:

- └─┘ = 90° SYMBOL
- = PROPOSED WELL HEAD.
- ◆ = TOP OF PRODUCTION
- ▲ = SECTION CORNERS LOCATED.
- ◆ Top of Production

NAD 83 (TARGET BOTTOM HOLE)	
LATITUDE = 40°49'52.92" (40.831367)	
LONGITUDE = 103°46'44.09" (103.778914)	
NAD 27 (TARGET BOTTOM HOLE)	
LATITUDE = 40°49'52.98" (40.831383)	
LONGITUDE = 103°46'42.28" (103.778411)	