

# HALLIBURTON

iCem<sup>®</sup> Service

## **CAERUS OIL AND GAS LLC - EBUS**

**For: Steve Schmitz**

Date: Saturday, December 12, 2015

### **PUCKETT 24D-1**

CAERUS - PUCKETT 24D-1 - 9 5/8 SURFACE

Job Date: Saturday, December 12, 2015

API# 05-045-22614-00

Sincerely,

**Grand Junction Cement Engineering**

## 2.0 Real-Time Job Summary

## 2.1 Job Event Log

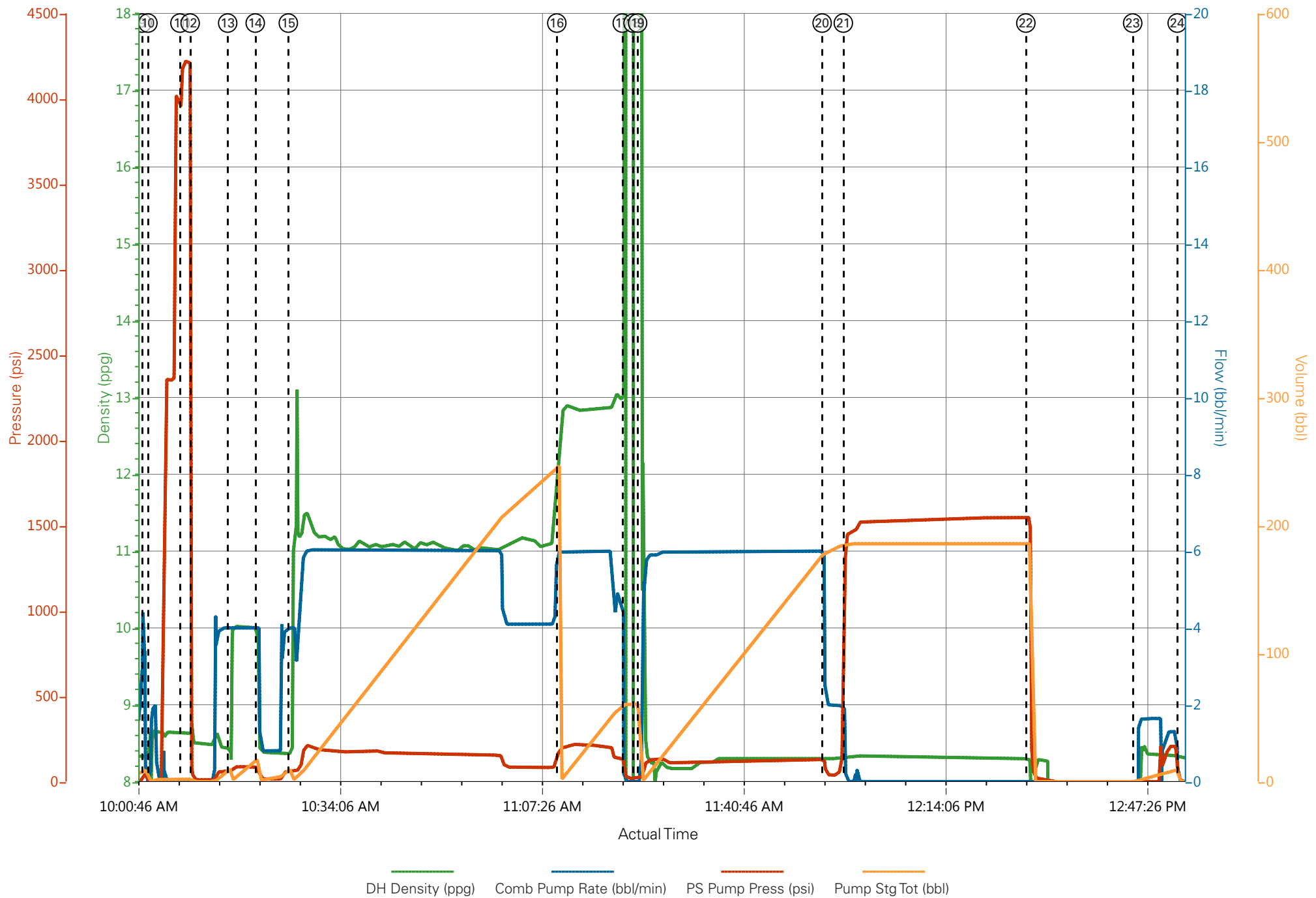
Type	Seq. No.	Activity	Date	Time	Source	DH Density (ppg)	Comb Pump Rate (bbl/min)	PS Pump Press (psi)	Pump Stg Tot (bbl)	Comments
Event	1	Call Out	12/11/2015	23:00:00	USER					ELITE #6
Event	2	Pre-Convoy Safety Meeting	12/12/2015	00:30:00	USER					ALL HES EMPLOYEES
Event	3	Arrive At Loc	12/12/2015	04:00:00	USER					ARRIVED 3 HOURS EARLY DID NOT START CHARGING HOURS UNTIL REQUESTED ON LOCATION TIME
Event	4	Assessment Of Location Safety Meeting	12/12/2015	04:15:00	USER					ALL HES EMPLOYEES
Event	5	Pre-Rig Up Safety Meeting	12/12/2015	04:30:00	USER					ALL HES EMPLOYEES
Event	6	Rig-Up Equipment	12/12/2015	04:45:00	USER					1 HT-400 PUMP TRUCK (ELITE #6) 1 660 BULK TRUCK 1 SILO
Event	7	Comment	12/12/2015	05:00:00	USER					COMPANY REP OFFERED SDS WATER TEMP @ 42 F PH: 7 CHLORIDES: 0
Event	8	Pre-Job Safety Meeting	12/12/2015	08:00:00	USER					ALL HES EMPLOYEES AND RIG CREW RIG DID NOT CIRCULATE JUST FILLED PIPE
Event	9	Start Job	12/12/2015	10:01:50	COM5					TD: 2540 TP: 2529 CSG: 9 5/8 36# J-55 SJ: 45.3 OH: 14 3/4 MUD WEIGHT: 9.4 PPG
Event	10	Prime Pumps	12/12/2015	10:02:47	COM5	8.33	2.0	40	2.0	PRIME LINES FRESH WATER
Event	11	Test Lines	12/12/2015	10:08:05	COM5	8.33		4226	2.0	PRESSURE TEST OK
Event	12	Pump Spacer 1	12/12/2015	10:09:46	COM5	8.33	4.0	40	2.0	10 BBL FRESH WATER

SPACER

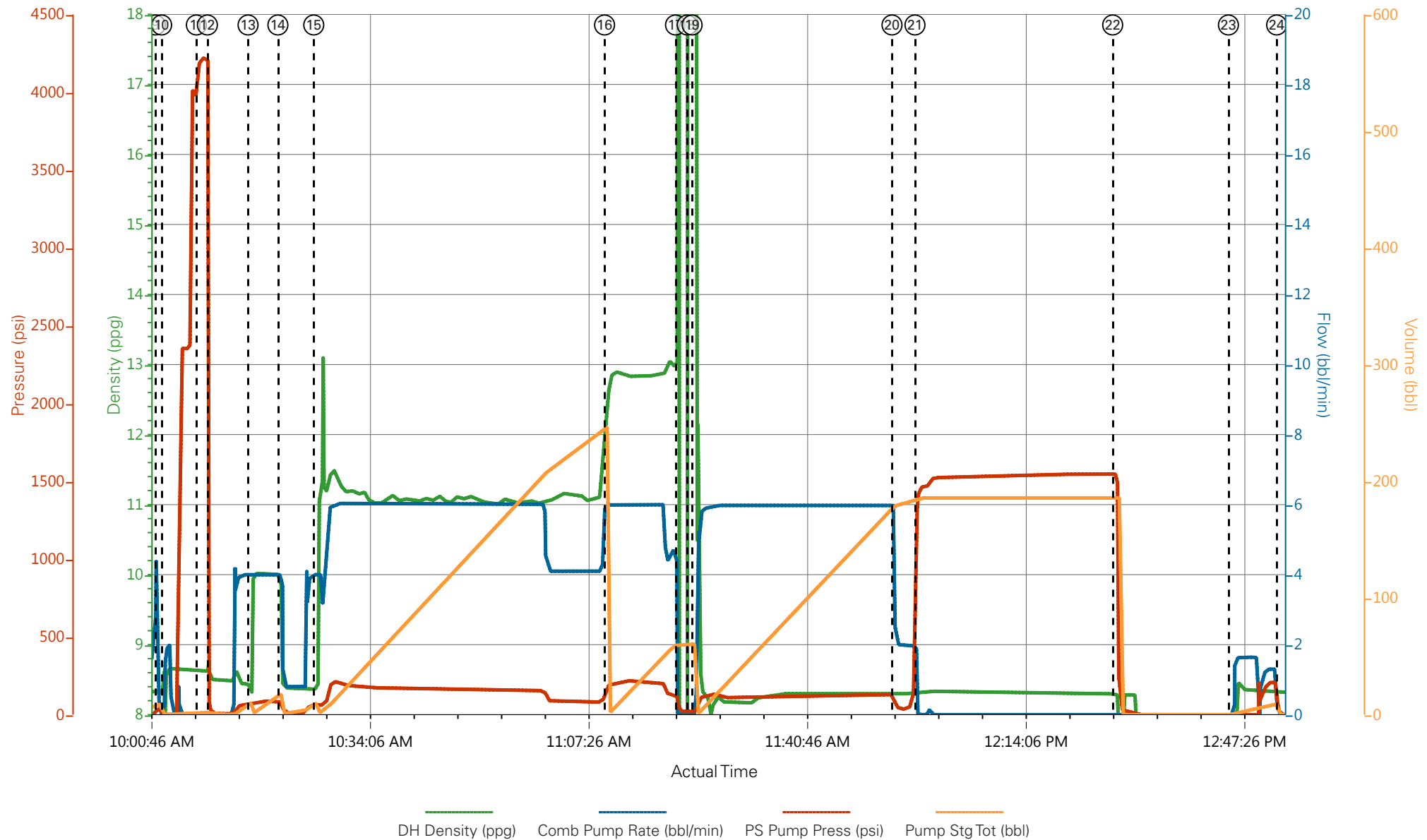
Event	13	Pump Spacer 2	12/12/2015	10:15:58	COM5	9.2	4.0	88	20.0	20 BBL SUPER FLUSH 101
Event	14	Pump Spacer 1	12/12/2015	10:20:31	COM5	8.33	4.0	90	10.0	10 BBL FRESH WATER SPACER
Event	15	Pump Lead Cement	12/12/2015	10:25:59	COM5	11.0	6.0	201	243.7	375 SKS VariCem ( 243.7 BBL) 11.0 PPG 3.65 YIELD 23.08 GAL/SK LEAD CEMENT WEIGHT VERIFIED VIA PRESSURIZED MUD SCALES ADDED 90 LBS TUFF FIBER THROUGHOUT LEAD CEMENT
Event	16	Pump Tail Cement	12/12/2015	11:10:20	COM5	12.8	6.0	220	62.1	160 SKS VariCem ( 62.1 BBL) 12.8 PPG 2.18 YIELD 12.11 GAL/SK TAIL CEMENT WEIGHT VERIFIED VIA PRESSURIZED MUD SCALES
Event	17	Other	12/12/2015	11:21:09	COM5					
Event	18	Drop Top Plug	12/12/2015	11:22:56	COM5					PLUG AWAY NO PROBLEMS
Event	19	Pump Displacement	12/12/2015	11:23:41	COM5	8.4	6.0	132	192.0	FRESH WATER DISPLACEMENT
Event	20	Other	12/12/2015	11:54:10	COM5	8.4	2.0	66	182.0	SLOW RATE TO BUMP PLUG
Event	21	Bump Plug	12/12/2015	11:57:40	COM5	8.4	2.0	120	192.0	PRESSURE PRIOR TO BUMPING PLUG @ 120 PSI BUMPED PLUG UP TO 1546 PSI AND HELD FOR 30 MIN CASING TEST
Event	22	Other	12/12/2015	12:27:49	COM5	8.4		1546	192.0	FLOATS HOLDING 2 BBL BACK TO TRUCKS TANK
Event	23	Other	12/12/2015	12:45:28	COM5	8.4	1.5	220	10.0	CLEAR PARASITE LINE 10 BBL SUGAR WATER
Event	24	End Job	12/12/2015	12:52:49	COM5					NO RETURNS THROUGHOUT JOB PIPE WAS STATIC THROUGHOUT

										JOB NO CEMENT TO SURFACE
Event	25	Start Job	12/12/2015	16:35:24	COM5					START TOP OUT JOB
Event	26	Prime Pumps	12/12/2015	16:35:50	COM5	8.33	2.0	36	2.0	PRIME LINES FRESH WATER
Event	27	Pump Cement	12/12/2015	16:44:46	COM5	12.8	3.0	120	113.2	300 SKS ( 113.2 BBLS) 12.8 PPG 2.12 YIELD 11.15 GAL/SK REVERCEM CEMENT WEIGHT VERIFIED VIA PRESSURIZED MUD SCALES LAST 150 SKS 20 BBLS SUPERFLUSH 101 ADDED
Event	28	Pump Displacement	12/12/2015	17:22:36	COM5	8.33	2.0	46	5.0	CLEAN LINES FRESH WATER
Event	29	Pump Cement	12/12/2015	17:35:24	USER	15.6	3.0	135	27.3	130 SKS ( 27.3 BBLS) 15.6 PPG 1.18 YIELD 5.27 GAL/SK TYPE I/II CEMENT WEIGHT VERIFIED VIA PRESSURIZED MUD SCALES 10 GAL CALCIUM CHLORIDE ADDED
Event	30	Clean Lines	12/12/2015	17:47:29	USER	8.33	3.0	36	5.0	CLEAN LINES FRESH WATER
Event	31	End Job	12/12/2015	17:50:26	COM5					END TOP OUT JOB
Event	32	Pre-Rig Down Safety Meeting	12/12/2015	18:30:00	USER					ALL HES EMPLOYEES
Event	33	Rig-Down Equipment	12/12/2015	18:45:00	USER					
Event	34	Pre-Convoy Safety Meeting	12/12/2015	19:45:00	USER					ALL HES EMPLOYEES
Event	35	Crew Leave Location	12/12/2015	20:00:00	USER					THANK YOU FOR USING HALLIBURTON CEMENT DAVID CAMPBELL AND CREW

# CAERUS - PUCKETT 24D-1 - 9 5/8 SURFACE



# CAERUS - PUCKETT 24D-1 - 9 5/8 SURFACE



- |   |                          |                      |                     |                        |
|---|--------------------------|----------------------|---------------------|------------------------|
| ① Call Out                              | ⑥ Rig-Up Equipment       | ⑪ Test Lines         | ⑯ Pump Tail Cement  | 21 Bump Plug           |
| ② Pre-Convoy Safety Meeting             | ⑦ Comment                | ⑫ Fresh Water Spacer | ⑰ Shut Down         | 22 Check Floats        |
| ③ Arrive At Loc                         | ⑧ Pre-Job Safety Meeting | ⑬ Super Flush 101    | ⑱ Drop Top Plug     | 23 Clear Parasite Line |
| ④ Assessment Of Location Safety Meeting | ⑨ Start Job              | ⑭ Fresh Water Spacer | ⑲ Pump Displacement | 24 End Job             |
| ⑤ Pre-Rig Up Safety Meeting             | ⑩ Prime Lines            | ⑮ Pump Lead Cement   | 20 Slow Rate        |                        |

▼ **HALLIBURTON** | iCem® Service

Created: 2015-12-11 16:44:47, Version: 4.2.393

Edit

Customer : CAERUS OIL AND GAS LLC - EBUS

Job Date : 12/12/2015

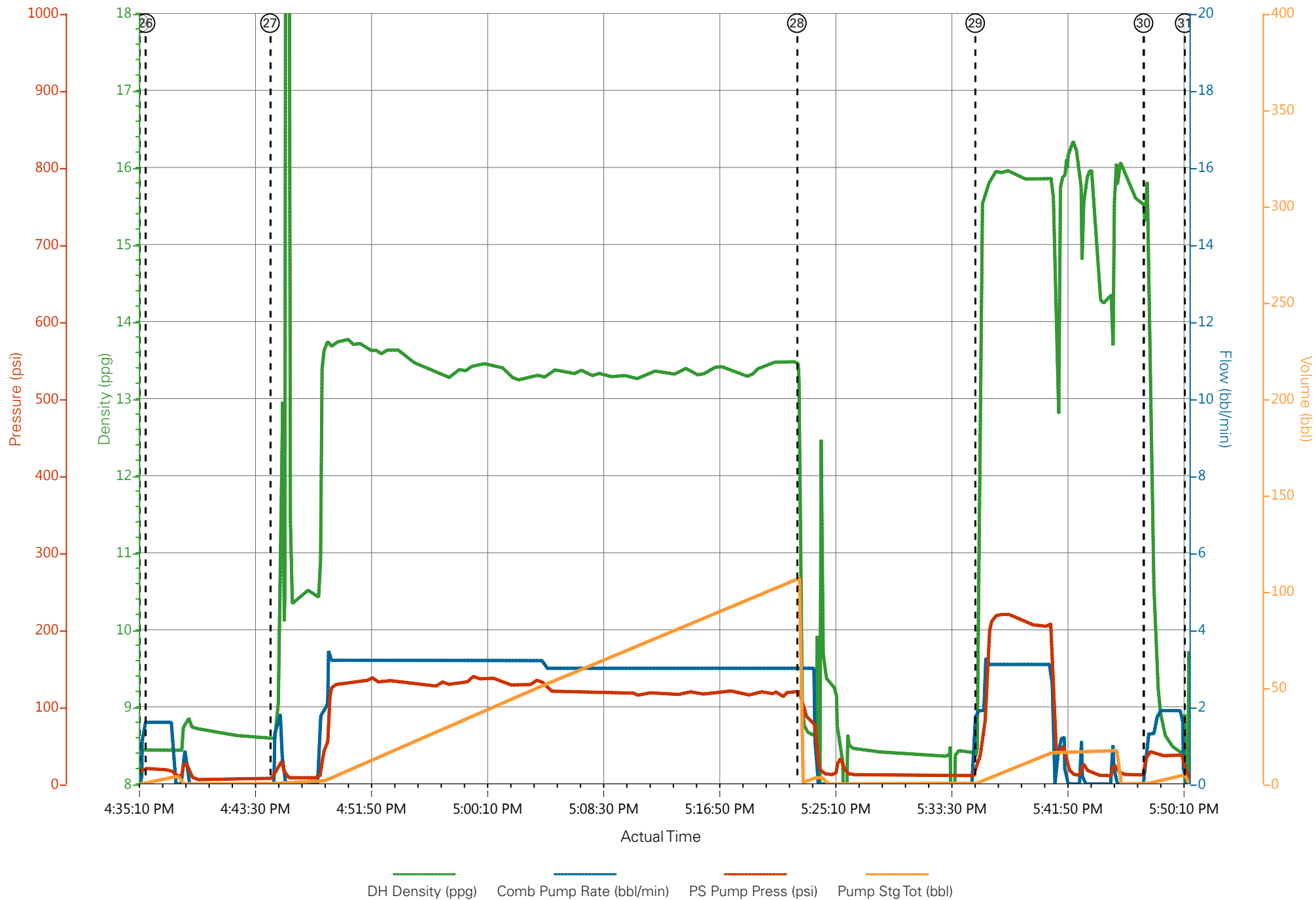
Well : PUCKETT 24D-1

Representative : WHITEY COTTAM

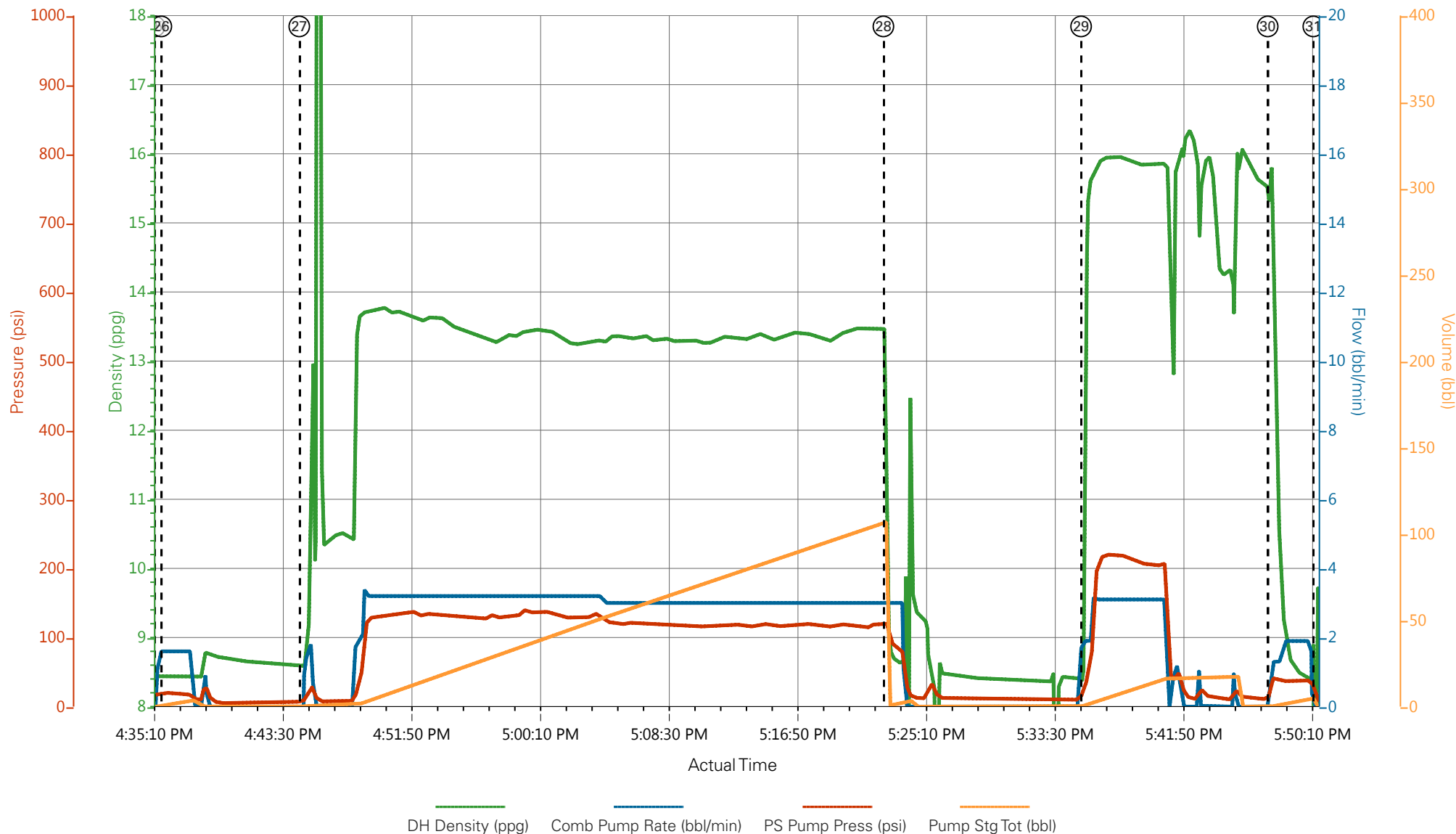
Sales Order # : 0902976320

ELITE # 6 : DAVID CAMPBELL / DUSTIN SMITH

# CAERUS - PUCKETT 24D-1 - TOP OUT



# CAERUS - PUCKETT 24D-1 - TOP OUT



- |   |                          |                      |                        |                |                                |
|---|--------------------------|----------------------|------------------------|----------------|--------------------------------|
| ① Call Out                              | ⑦ Comment                | ⑬ Super Flush 101    | ⑲ Pump Displacement    | 25 Start Job   | 31 End Job                     |
| ② Pre-Convoy Safety Meeting             | ⑧ Pre-Job Safety Meeting | ⑭ Fresh Water Spacer | 20 Slow Rate           | 26 Prime Lines | 32 Pre-Rig Down Safety Meeting |
| ③ Arrive At Loc                         | ⑨ Start Job              | ⑮ Pump Lead Cement   | 21 Bump Plug           | 27 Pump Cement | 33 Rig-Down Equipment          |
| ④ Assessment Of Location Safety Meeting | ⑩ Prime Lines            | ⑯ PumpTail Cement    | 22 Check Floats        | 28 Clean Lines | 34 Pre-Convoy Safety Meeting   |
| ⑤ Pre-Rig Up Safety Meeting             | ⑪ Test Lines             | ⑰ Shut Down          | 23 Clear Parasite Line | 29 Pump Cement | 35 Crew Leave Location         |
| ⑥ Rig-Up Equipment                      | ⑫ Fresh Water Spacer     | ⑱ Drop Top Plug      | 24 End Job             | 30 Clean Lines |                                |

▼ **HALLIBURTON** | iCem® Service

Created: 2015-12-11 16:44:47, Version: 4.2.393

Edit

Customer: CAERUS OIL AND GAS LLC - EBUS  
Representative: WHITEY COTTAM

Job Date: 12/12/2015  
Sales Order #: 0902976320

Well: PUCKETT 24D-1  
ELITE # 6: DAVID CAMPBELL / DUSTIN SMITH