

# HALLIBURTON

iCem<sup>®</sup> Service

## **CAERUS OIL AND GAS LLC - EBUS**

**For: Steve Schmitz**

Date: Saturday, December 19, 2015

### **Puckett 24C-1 Surface PJR**

API# 05-045-22613-00

SO# 902993683

Job Date: Saturday, December 19, 2015

Sincerely,

**Grand Junction Cement Engineering**

## 1.0 Real-Time Job Summary

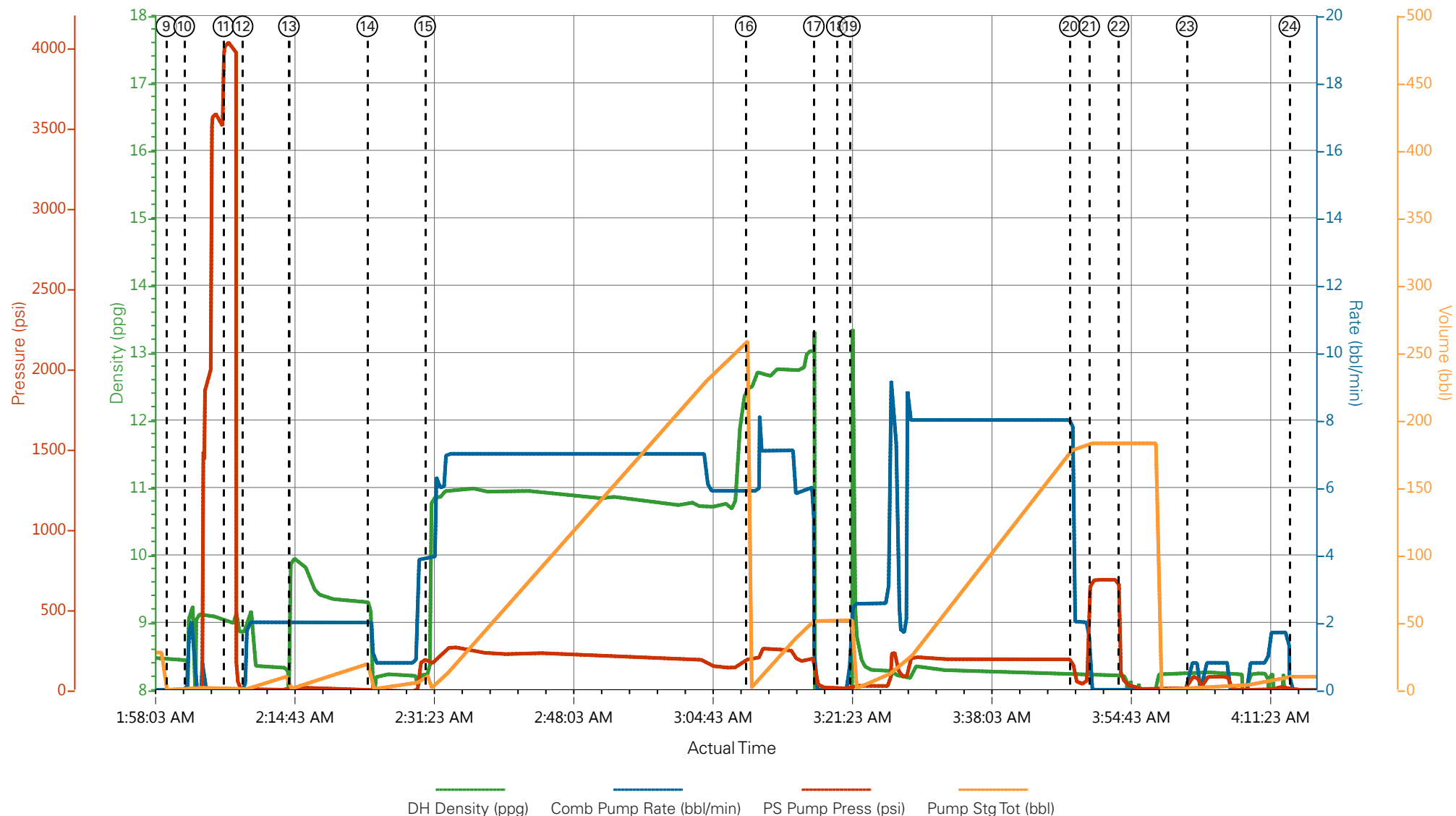
## 1.1 Job Event Log

Type	Seq. No.	Activity	Date	Time	Source	DH Density (ppg)	Comb Pump Rate (bbl/min)	PS Pump Press (psi)	Pump Stg Tot (bbl)	Comments
Event	1	Call Out	12/18/2015	17:00:00	USER					O/L time 0100 12/19/15
Event	2	Pre-Convoy Safety Meeting	12/18/2015	18:45:00	USER					
Event	3	Crew Leave Yard	12/18/2015	19:00:00	USER					1 660, 1 transport, 1 pickup
Event	4	Arrive At Loc	12/18/2015	22:30:00	USER					Rig almost finished running casing
Event	5	Assessment Of Location Safety Meeting	12/18/2015	22:45:00	USER					JSA completed - customer offered/received SDS - water test pH 7.5, Cl 0, temp 81 degrees
Event	6	Pre-Rig Up Safety Meeting	12/18/2015	23:15:00	USER					
Event	7	Rig-Up Equipment	12/18/2015	23:30:00	USER					1 hardline into cellar, 1 water hose to day tank, bulk hoses to silos and 660, hose to superflush transport
Event	8	Pre-Job Safety Meeting	12/19/2015	01:45:00	USER					All HES personnel, rig crew, and company rep
Event	9	Start Job	12/19/2015	01:59:46	USER					TD 2548', TP 2548', SJ 36.80', Mud 9.2, 14 3/4" OH, 9 5/8" 36# csg
Event	10	Prime Pumps	12/19/2015	02:01:53	COM5	8.33	2.0	41	2.0	Fresh water
Event	11	Test Lines	12/19/2015	02:06:35	COM5			4059		Pressure held well
Event	12	Pump Spacer 1	12/19/2015	02:08:52	COM5	8.33	2.0	21	10.0	Fresh water
Event	13	Pump Spacer 2	12/19/2015	02:14:25	COM5	10.0	2.0	29	20.0	10.0 ppg
Event	14	Pump Spacer 1	12/19/2015	02:23:47	COM5	8.33	4.0	210	10.0	Fresh water

Event	15	Pump Lead Cement	12/19/2015	02:30:42	COM5	11.0	7.0	280	243.8	375 sks VariCem GJ5 Lead, 11.0 ppg, 3.65 yield, 23.08 gal/sk
Event	16	Pump Tail Cement	12/19/2015	03:09:02	COM5	12.8	7.0	277	62.1	160 sks VariCem GJ5 Tail, 12.8 ppg, 2.18 yield, 12.11 gal/sk
Event	17	Shutdown	12/19/2015	03:17:11	USER					Wash up on top of plug
Event	18	Drop Top Plug	12/19/2015	03:19:55	USER					Plug launched
Event	19	Pump Displacement	12/19/2015	03:21:29	COM5	8.33	8.0	221	194.1	Fresh water
Event	20	Slow Rate	12/19/2015	03:47:48	USER		2.0	54	10.0	No returns during job
Event	21	Bump Plug	12/19/2015	03:50:06	COM5			64		
Event	22	Check Floats	12/19/2015	03:53:36	USER			705		Floats held - 1 bbl flowback
Event	23	Pump Water	12/19/2015	04:01:46	USER					Clear Parasite line
Event	24	Shutdown	12/19/2015	04:14:02	USER					
Event	25	Pump Water	12/19/2015	09:04:00	USER					Flush lines
Event	26	Pump Cement	12/19/2015	09:05:07	COM5	12.8	3.0	118	113.3	300 sks ReverCem, 12.8 ppg, 2.12 yield, 11.15 gal/sk
Event	27	Shutdown	12/19/2015	09:45:24	USER					
Event	28	Pump Water	12/19/2015	11:18:55	USER					Flush lines
Event	29	Pump Cement	12/19/2015	11:20:30	USER	15.6	2.0	31	8.1	15.6 ppg Type I/II, 1.16 yield, 5.02 gal/sk - add 2% CaCl – used approx 40 sks
Event	30	Shutdown	12/19/2015	11:23:13	USER					Good cement to surface
Event	31	End Job	12/19/2015	11:24:45	USER					3 add hours, 1 gal CaCl used, 30 lbs sugar
Event	32	Pre-Rig Down Safety Meeting	12/19/2015	11:45:00	USER					
Event	33	Rig-Down Equipment	12/19/2015	12:00:00	USER					
Event	34	Pre-Convoy Safety	12/19/2015	13:45:00	USER					

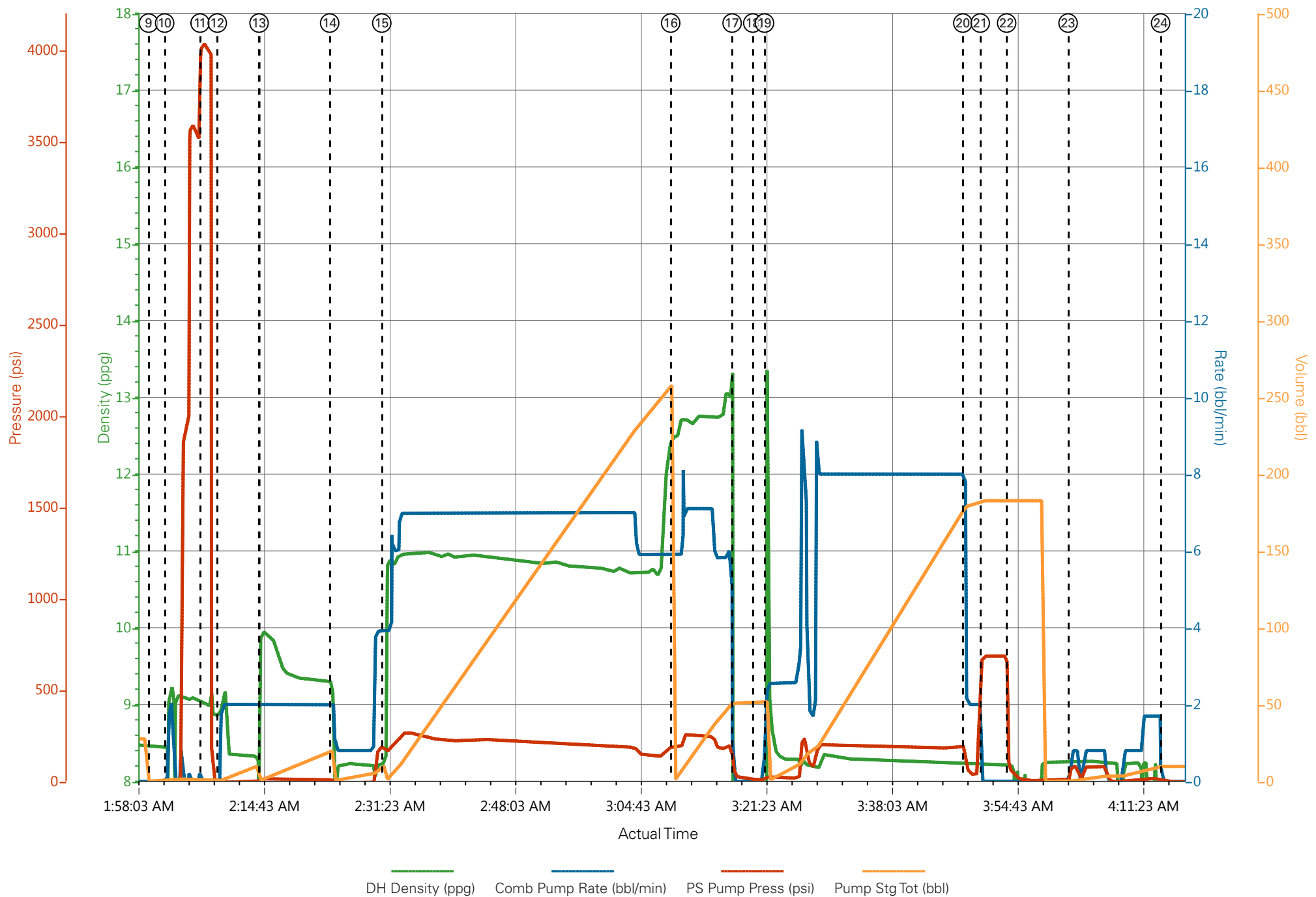
Meeting					
Event	35	Crew Leave Location	12/19/2015	14:00:00	USER
Thank you for using Halliburton – Ed Deussen and crew					

# CAERUS - PUCKETT 24C-1 - 9 5/8" SURFACE - Primary Cement Job

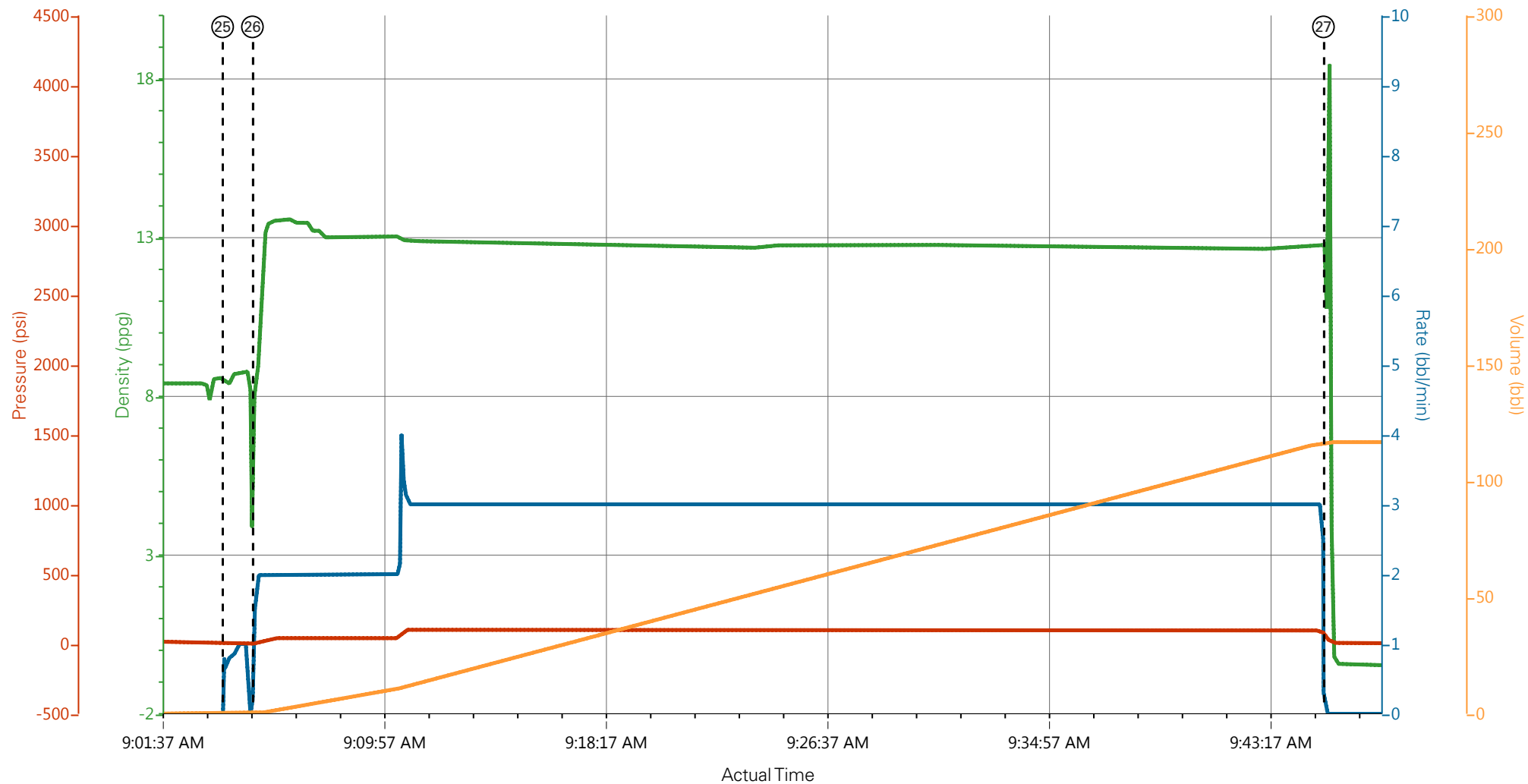


- |   |                          |                    |                                 |                                |
|---|--------------------------|--------------------|---------------------------------|--------------------------------|
| ① Call Out                              | ⑦ Rig-Up Equipment       | ⑬ Pump Superflush  | ⑰ Pump Displacement             | 25 Pre-Rig Down Safety Meeting |
| ② Pre-Convoy Safety Meeting             | ⑧ Pre-Job Safety Meeting | ⑭ Pump H2O Spacer  | 20 Slow Rate                    | 26 Rig-Down Equipment          |
| ③ Crew Leave Yard                       | ⑨ Start Job              | ⑮ Pump Lead Cement | 21 Bump Plug                    | 27 Pre-Convoy Safety Meeting   |
| ④ Arrive At Location                    | ⑩ Prime Lines            | ⑯ Pump Tail Cement | 22 Check Floats                 | 28 Crew Leave Location         |
| ⑤ Assessment Of Location Safety Meeting | ⑪ Test Lines             | ⑰ Shutdown/Wash up | 23 Pump Sugar Water             |                                |
| ⑥ Pre-Rig Up Safety Meeting             | ⑫ Pump H2O Spacer        | ⑱ Drop Top Plug    | 24 Shutdown/Stand by for Topout |                                |

# CAERUS - PUCKETT 24C-1 - 9 5/8" SURFACE - Primary Cement Job



# CAERUS - PUCKETT 24C-1 - 9 5/8" SURFACE - Annular Fill



- |   |                          |                     |                                 |                              |
|---|--------------------------|---------------------|---------------------------------|------------------------------|
| ① Call Out                              | ⑧ Pre-Job Safety Meeting | ⑮ Pump Lead Cement  | 22 Check Floats                 | 29 Rig-Down Equipment        |
| ② Pre-Convoy Safety Meeting             | ⑨ Start Job              | ⑯ Pump Tail Cement  | 23 Pump Sugar Water             | 30 Pre-Convoy Safety Meeting |
| ③ Crew Leave Yard                       | ⑩ Prime Lines            | ⑰ Shutdown/Wash up  | 24 Shutdown/Stand by for Topout | 31 Crew Leave Location       |
| ④ Arrive At Location                    | ⑪ Test Lines             | ⑱ Drop Top Plug     | 25 Pump Water Ahead             |                              |
| ⑤ Assessment Of Location Safety Meeting | ⑫ Pump H2O Spacer        | ⑲ Pump Displacement | 26 Pump Topout                  |                              |
| ⑥ Pre-Rig Up Safety Meeting             | ⑬ Pump Superflush        | 20 Slow Rate        | 27 Shutdown/Standby for Topout  |                              |
| ⑦ Rig-Up Equipment                      | ⑭ Pump H2O Spacer        | 21 Bump Plug        | 28 Pre-Rig Down Safety Meeting  |                              |

▼ **HALLIBURTON** | iCem® Service

Created: 2015-12-19 00:12:42, Version: 4.2.393

Edit

Customer : CAERUS OIL AND GAS LLC - EBUS

Job Date : 12/19/2015 12:50:06 AM

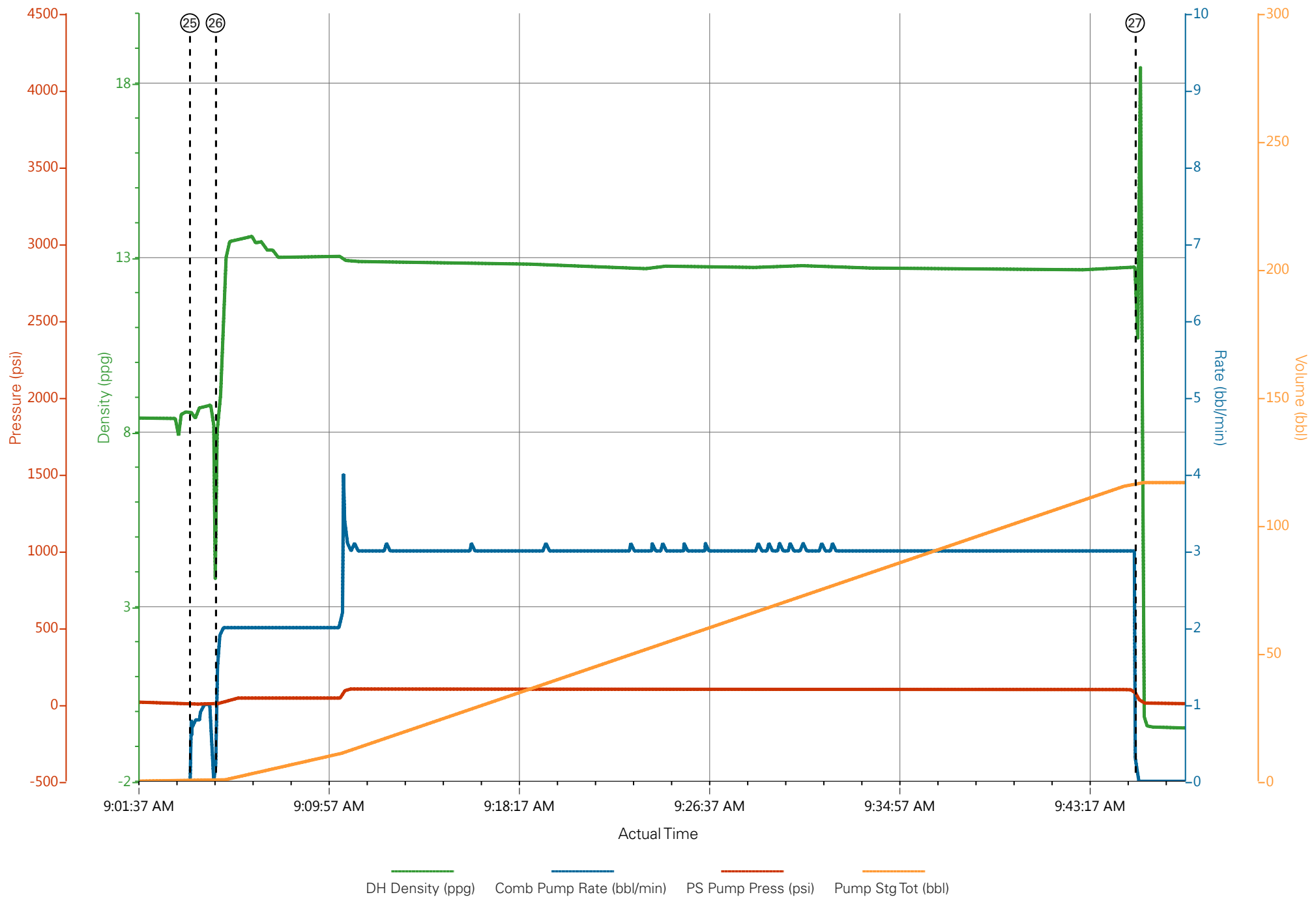
Well : Puckett 24C-1

Representative : George Urban

Sales Order # : 902993683

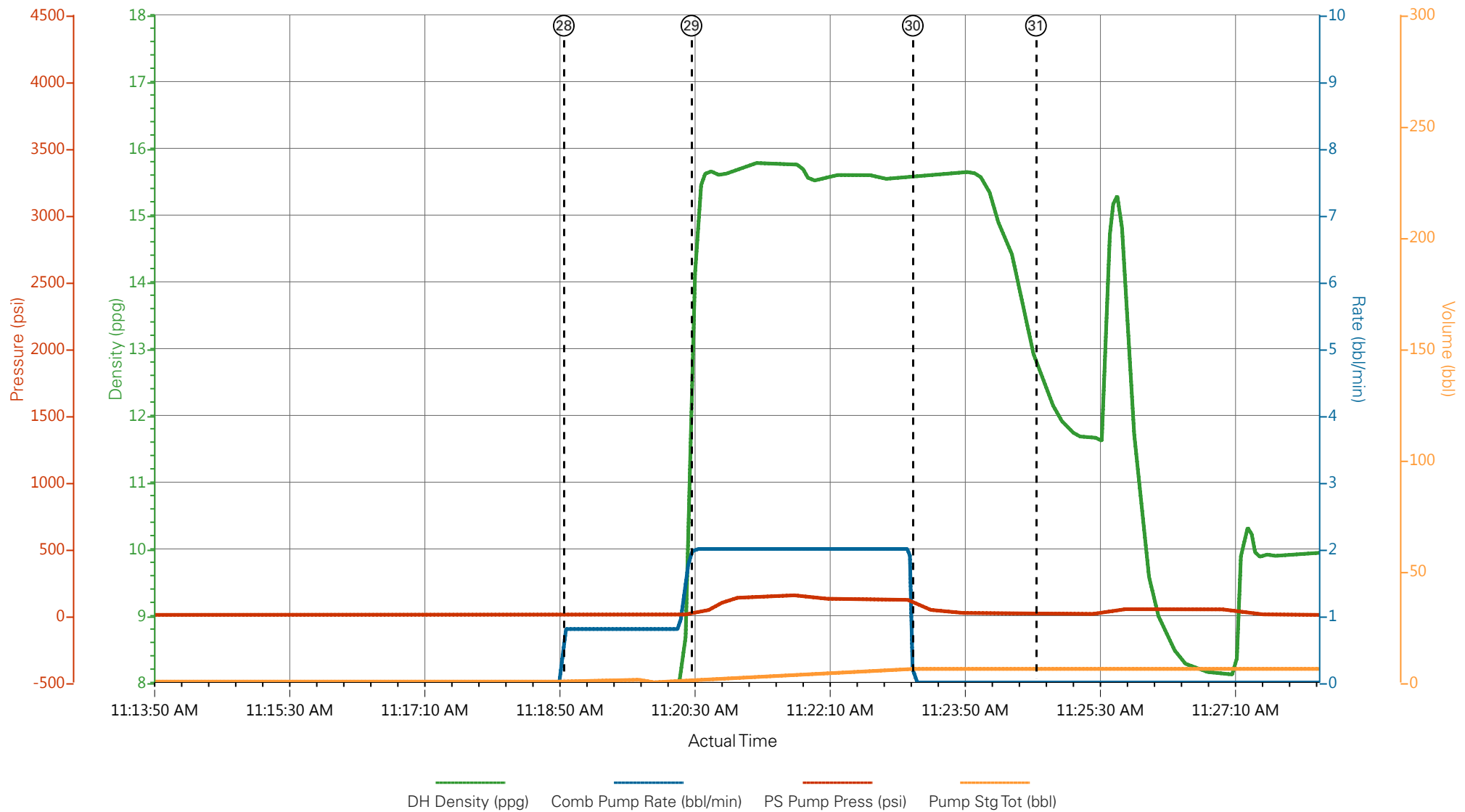
Elite #6 : Ed Deussen / Justin Brown

# CAERUS - PUCKETT 24C-1 - 9 5/8" SURFACE - Annular Fill





# CAERUS - PUCKETT 24C-1 - 9 5/8" SURFACE - Topout



- |   |                          |                     |                                 |                                |
|---|--------------------------|---------------------|---------------------------------|--------------------------------|
| ① Call Out                              | ⑧ Pre-Job Safety Meeting | ⑮ Pump Lead Cement  | 22 Check Floats                 | 29 Pump Topout Cement          |
| ② Pre-Convoy Safety Meeting             | ⑨ Start Job              | ⑯ Pump Tail Cement  | 23 Pump Sugar Water             | 30 Shutdown                    |
| ③ Crew Leave Yard                       | ⑩ Prime Lines            | ⑰ Shutdown/Wash up  | 24 Shutdown/Stand by for Topout | 31 End Job                     |
| ④ Arrive At Location                    | ⑪ Test Lines             | ⑱ Drop Top Plug     | 25 Pump Water Ahead             | 32 Pre-Rig Down Safety Meeting |
| ⑤ Assessment Of Location Safety Meeting | ⑫ Pump H2O Spacer        | ⑲ Pump Displacement | 26 Pump Annular Fill            | 33 Rig-Down Equipment          |
| ⑥ Pre-Rig Up Safety Meeting             | ⑬ Pump Superflush        | 20 Slow Rate        | 27 Shutdown/Standby for Topout  | 34 Pre-Convoy Safety Meeting   |
| ⑦ Rig-Up Equipment                      | ⑭ Pump H2O Spacer        | 21 Bump Plug        | 28 Pump Water Ahead             | 35 Crew Leave Location         |

▼ **HALLIBURTON** | iCem® Service

Created: 2015-12-19 00:12:42, Version: 4.2.393

Edit

Customer : CAERUS OIL AND GAS LLC - EBUS

Job Date : 12/19/2015 12:50:06 AM

Well : Puckett 24C-1

Representative : George Urban

Sales Order # : 902993683

Elite #6 : Ed Deussen / Justin Brown

# CAERUS - PUCKETT 24C-1 - 9 5/8" SURFACE - Topout

