



FILE NO: CH105973		COMPANY CAERUS OPERATING LLC	
API NO: 05045226130000		WELL PUCKETT 24C-1	
Ver. 4.06		FIELD GRAND VALLEY	
SEC 1 T7S R97W		COUNTY GARFIELD	
H&P 330		STATE COLORADO	
MESA P2 797 PAD		LOCATION: SHL: 317' FEL 1074' FSL S2 T7S R97W BHL: 2051' FEL 488' FSL S1 T7S R97W SE/SE SEC 1 TWP 7S RGE 97W	
PERMANENT DATUM LOG MEASURED FROM DRILL. MEAS. FROM		OTHER SERVICES CBL ELEVATIONS: KB 8453.8 FT DF GL 8423.8 FT	
G.L. ELEVATION 8423.8 FT K.B. 30 FT ABOVE P.D. K.B.			
DATE 27-FEB-2016			
RUN 2 TRIP 1			
SERVICE ORDER CH105973			
DEPTH DRILLER 9218 FT			
DEPTH LOGGER 9173 FT			
BOTTOM LOGGED INTERVAL 9163 FT			
TOP LOGGED INTERVAL 4673 FT			
TIME STARTED 9:30			
TIME FINISHED 15:30			
OPERATOR RIG TIME 6 HRS			
TYPE OF FLUID IN HOLE WATER			
FLUID DENSITY NA			
FLUID SALINITY NA			
FLUID LEVEL NA			
LOGGED CEMENT TOP NA			
WELLHEAD PRESSURE 0 PSI			
MAXIMUM HOLE DEVIATION NA			
NOMINAL LOGGING SPEED 10 FMN			
MAX. RECORDED TEMP. 228 DEGF			
REFERENCE LOG BAKER HUGHES BOND LOG			
REFERENCE LOG DATE 27-FEB-2016			
EQUIP. NO. LOCATION HL-6685 GRAND JCT.			
RECORDED BY W. QUIGLEY			
WITNESSED BY M. LEIBOVITZ			

IN MAKING INTERPRETATIONS OF LOGS OUR EMPLOYEES WILL GIVE THE CUSTOMER THE BENEFIT OF THEIR BEST JUDGEMENT. BUT SINCE ALL INTERPRETATIONS ARE OPINIONS BASED ON INFERENCES FROM ELECTRICAL OR OTHER MEASUREMENTS, WE CANNOT, AND WE DO NOT GUARANTEE THE ACCURACY OR CORRECTNESS OF ANY INTERPRETATION. WE SHALL NOT BE LIABLE OR RESPONSIBLE FOR ANY LOSS, COST, DAMAGES, OR EXPENSES WHATSOEVER INCURRED OR SUSTAINED BY THE CUSTOMER RESULTING FROM ANY INTERPRETATION MADE BY ANY OF OUR EMPLOYEES.

BOREHOLE RECORD		
BIT SIZE	FROM	TO

CASING RECORD				
SIZE	WEIGHT	GRADE	FROM	TO
4.5 IN	11.6 LB/F	P-110	30 FT	9218 FT

REMARKS

RUN 2 TRIP 1: DEPTH CORRELATED TO BAKER HUGHES BOND LOG DATED 27-FEB-2016

BHT = 228 DEGF

THANK YOU FOR CHOOSING BAKER HUGHES WIRELINE SERVICES

EQUIPMENT DATA

RUN	TRIP	TOOL	SERIES NO.	SERIAL NO.	POSITION
2	1	PCM	8250EA	10408796	FREE
2	1	TEL/CCL	8248ED	10590814	FREE
2	1	GR	8262XA	10485470	FREE

2	1	RPM	8281EA	10273848	FREE
2	1	RPM	8281PA	10169251	FREE
2	1	RPM	8281FA	10191667	FREE
2	1	TEMP	8255XA	11774568	FREE

MAIN SECTION PNC-3D MODE

ECLIPS 6.2i ECLIPS General Release Rel 6.2i Wed Jun 12 12:21:40 CDT 2013

Updates: 1 Patches: 9

Plotted: Sat Feb 27 15:11:28 2016

PARAMETER AND FILTER SUMMARY REPORT

FILE: /dat1a/CH105973/n353hx02.prm
 LOGGING MODE: DEPTH DIRECTION: UP
 TOP DEPTH: 4651.500 ft BOTTOM DEPTH: 9181.500 ft

SYMMETRIC FILTER

MEASUREMENT TYPE	PARAMETER	VALUE	UNITS	INTERVAL (ft)	
GR	FILTER ()	medium (1)		TOP	BOTTOM

RPM PROCESSING

MEASUREMENT TYPE	PARAMETER	VALUE	UNITS	INTERVAL (ft)	
PNC Parameters	BOREHOLE CONTENTS	FLUID		TOP	BOTTOM
	OPEN/CASED HOLE	CASED HOLE		"	"
	BOREHOLE SIZE	7.88	in	"	"
	CASING SIZE	4.50	in	"	"
	MATRIX	SANDSTONE		"	"
	CORRECTION BUFFER	11		"	"

CURVE DESCRIPTION REPORT

CURVE NAME	CREATION DATE	CURVE DESCRIPTION
F1:CCL	Feb 27 10:28:28 2016	CASING COLLAR LOCATOR
F1:GR	Feb 27 10:28:28 2016	GAMMA RAY
F1:ISS	Feb 27 10:28:28 2016	INELASTIC SHORT SPACE COUNT RATE
F1:LS	Feb 27 10:28:28 2016	LONG SPACE COUNT RATE
F1:RATO	Feb 27 10:28:28 2016	SHORT/LONG SPACE COUNT RATE RATIO
F1:RICS	Feb 27 10:28:28 2016	SHORT SPACE INELASTIC TO CAPTURE COUNT RATE RATIO (ISS/CSS)
F1:SGFC	Feb 27 10:28:28 2016	CORRECTED FORMATION SIGMA
F1:SS	Feb 27 10:28:28 2016	SHORT SPACE COUNT RATE

CURVE MEASURE POINT OFFSET

CURVE	OFFSET (ft)	CURVE	OFFSET (ft)	CURVE	OFFSET (ft)	CURVE	OFFSET (ft)
CCL	26.00	ISS	12.75	RATO	12.75	SGFC	12.75
GR	23.00	LS	12.75	RICS	12.75	SS	12.75

Presentation : cas6685:/dat1a/CH105973/RPM_MAIN.fvpdf [5"/100' Scale]
 Plot Interval : 4627.25 - 9167.25 Feet

Data File 1 : F1 : cas6685:/dat1a/CH105973/n353hx02_MAIN.xtf
 Created On : Feb 27 10:28:28 2016
 Company : CAERUS OPERATING LLC
 Well : PUCKETT_24C-1
 Field : GRAND VALLEY
 File Interval : 4626.5 - 9182.25 Feet
 OCT : n353hx

GR BACKUP

FEET

ISS [iss]
(cts/s)
GAMMA RAY [gr]
(gAPI)

0 1E+06
0 150

CCL
(mv)

4700

LS [ls]
(cts/s)
SS [ss]
(cts/s)

0 29000
0 290000

RATO [rato]

17

0

(dim)

RICS [rics]

39

9

(dim)

SGFC [sgfc]

60

0

(cu)

GR

ISS

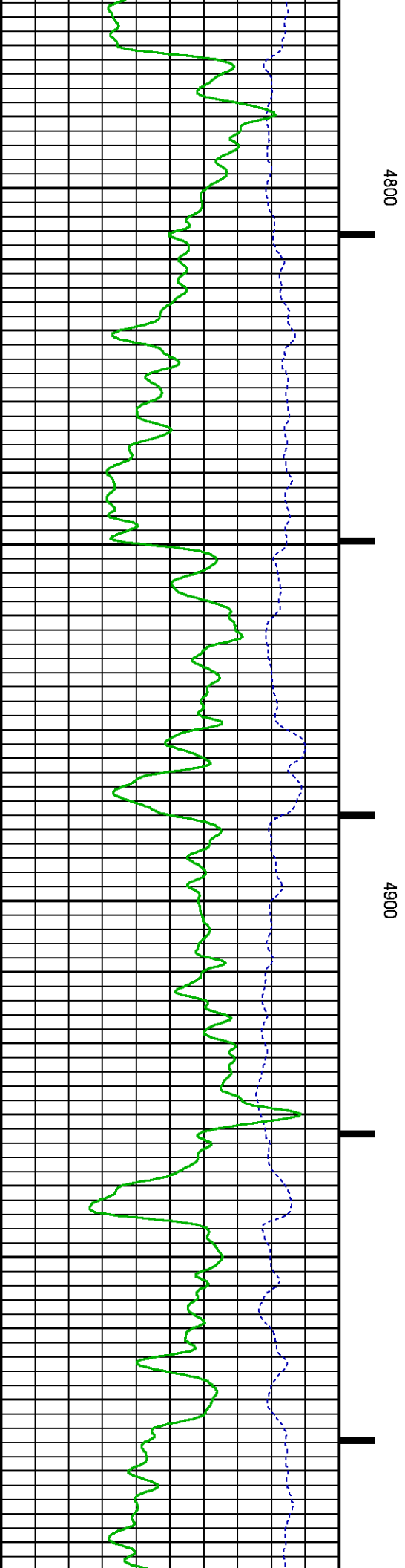
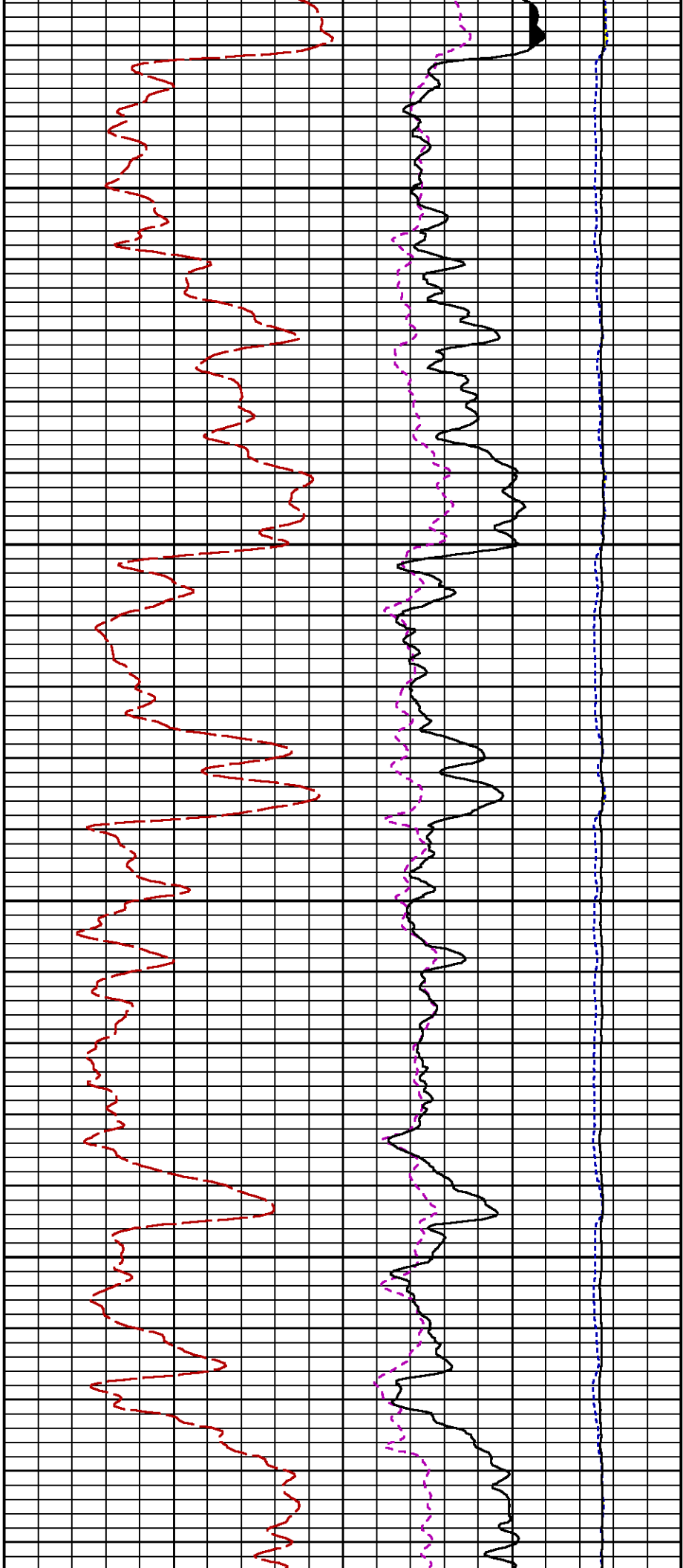
RATO

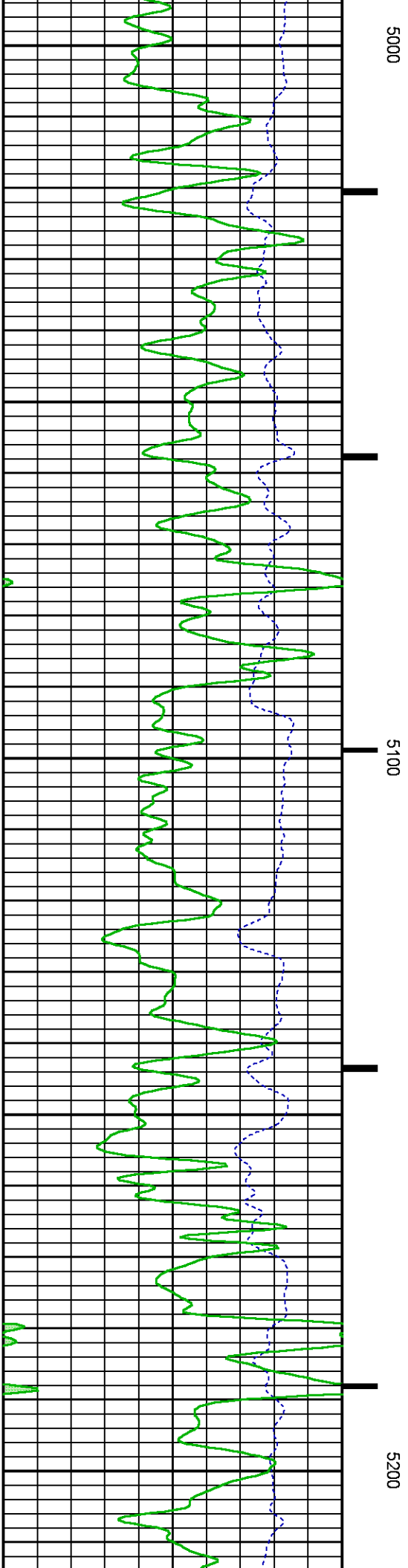
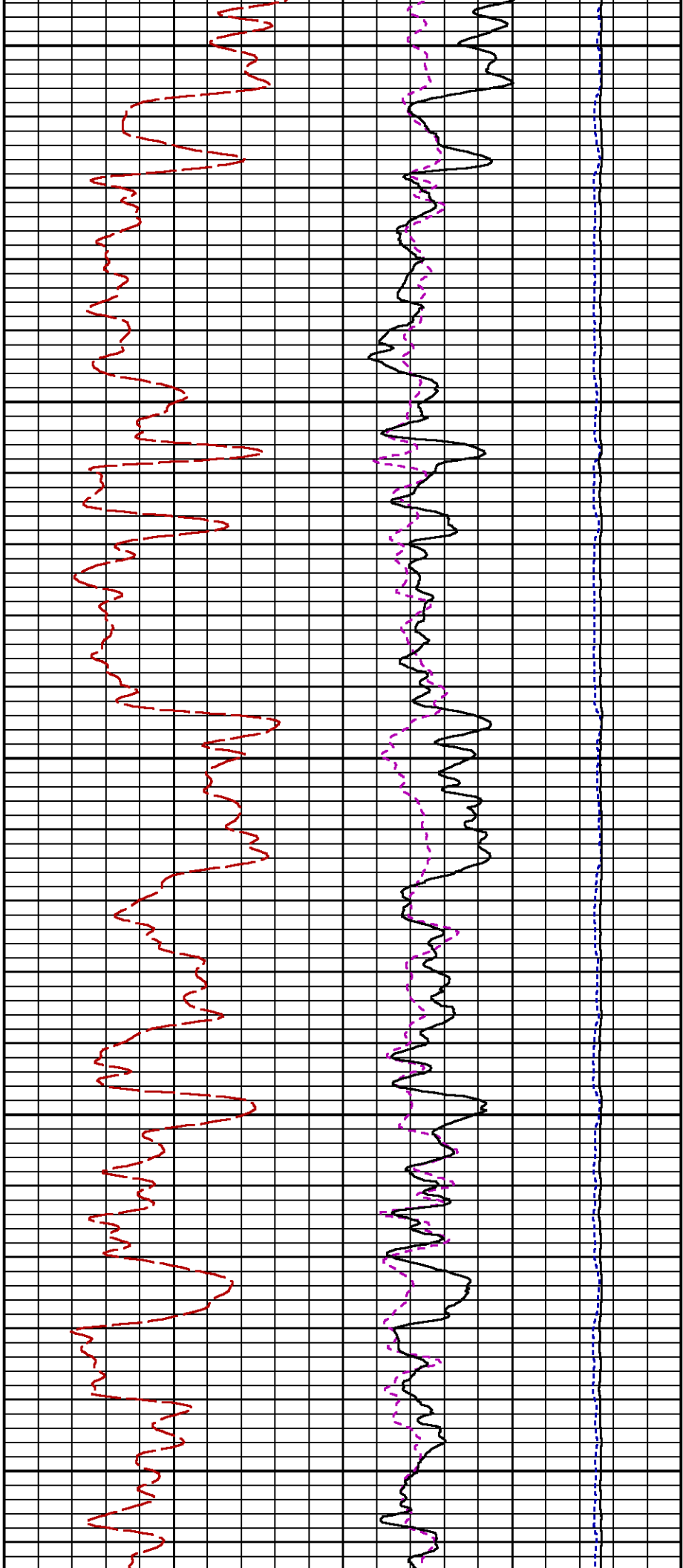
RICS

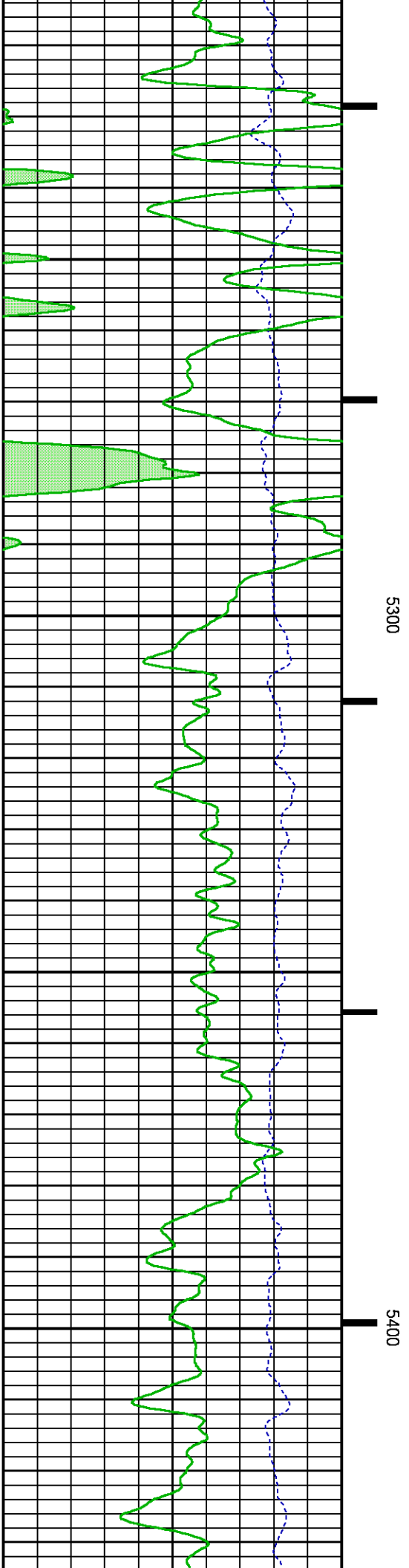
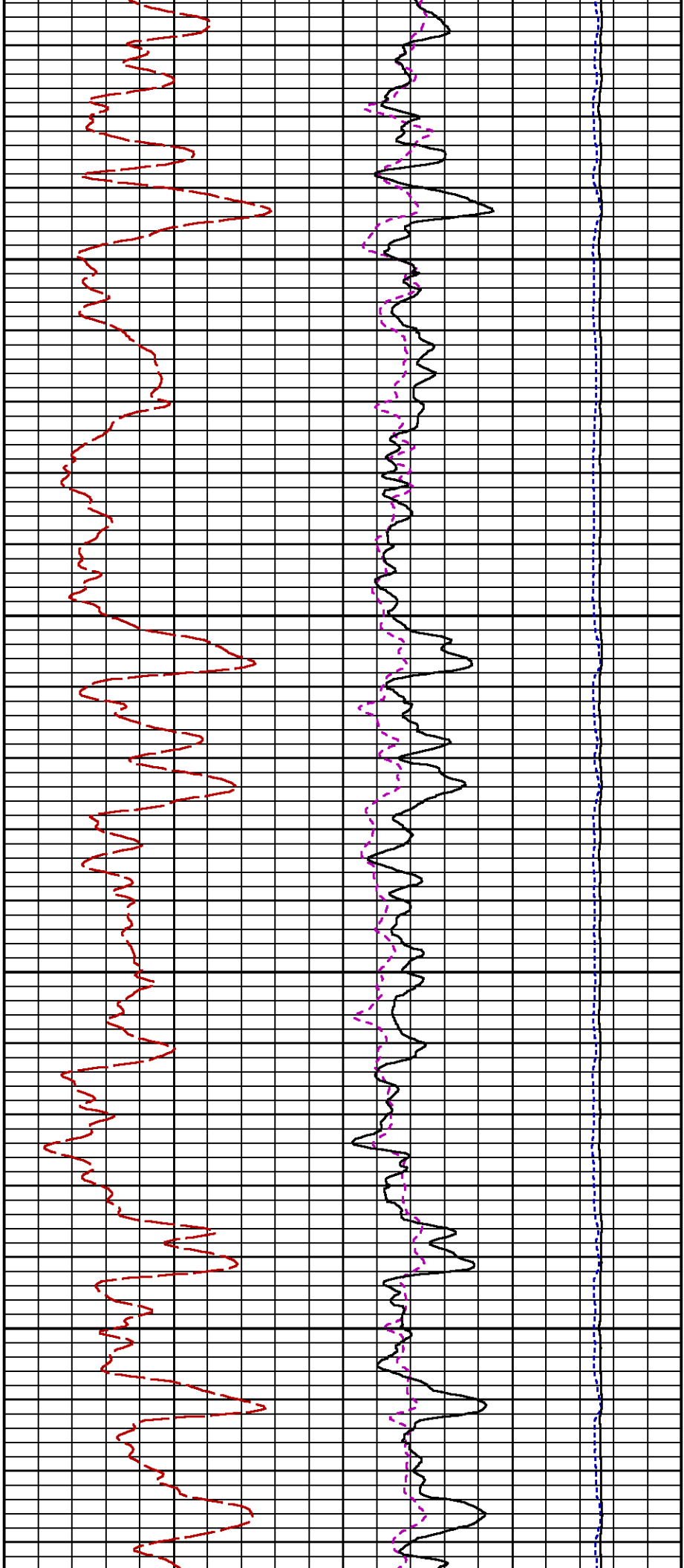
SGFC

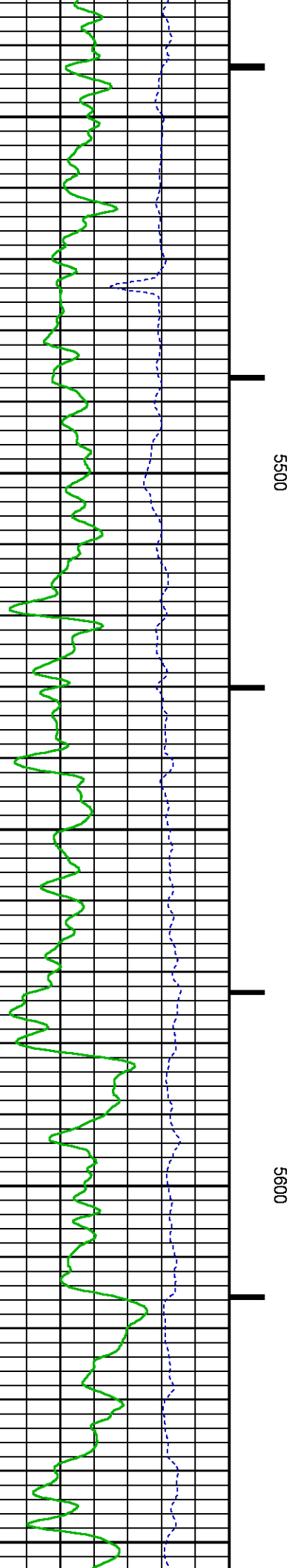
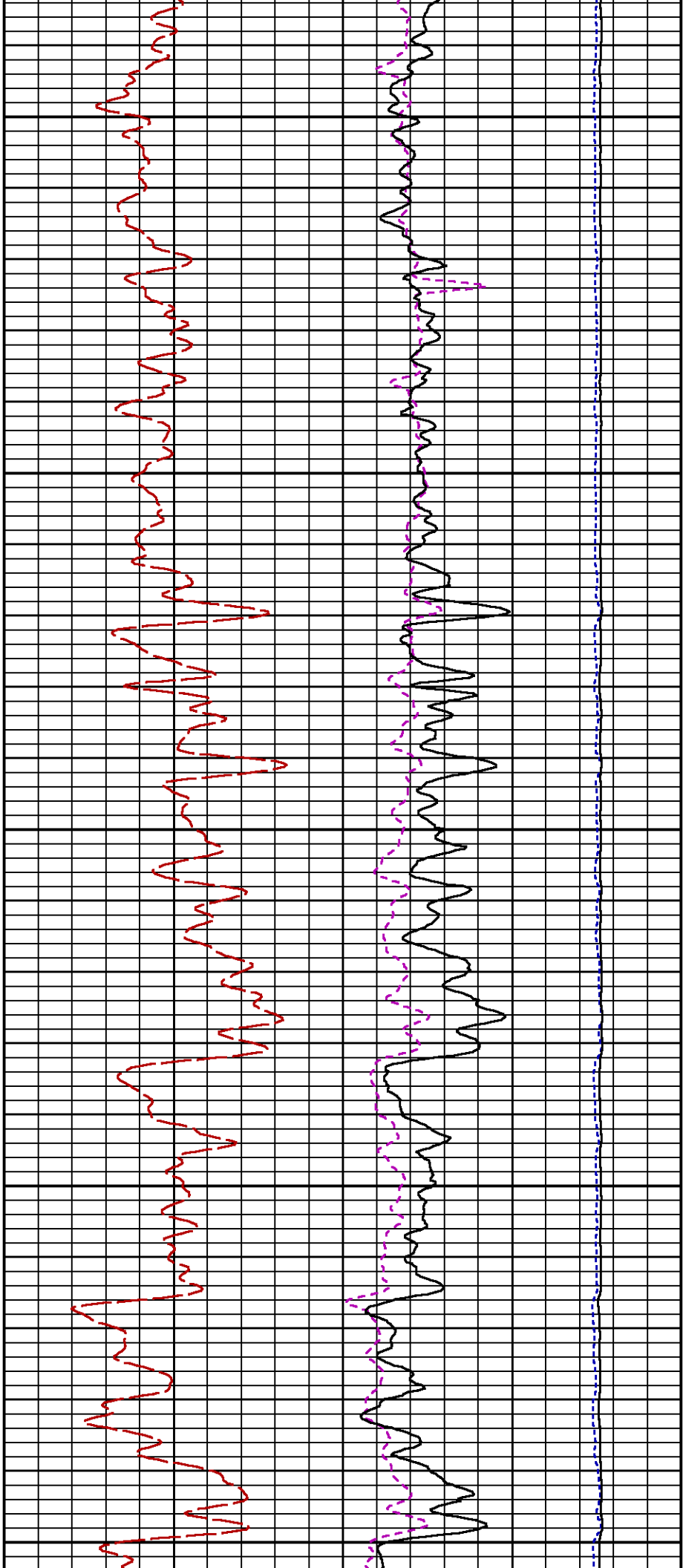
LS

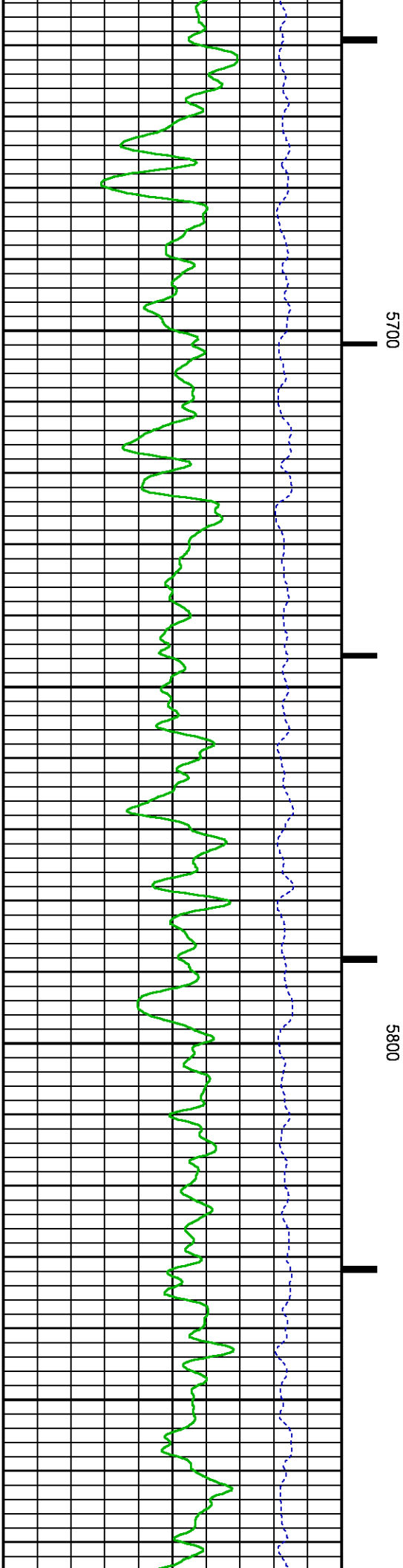
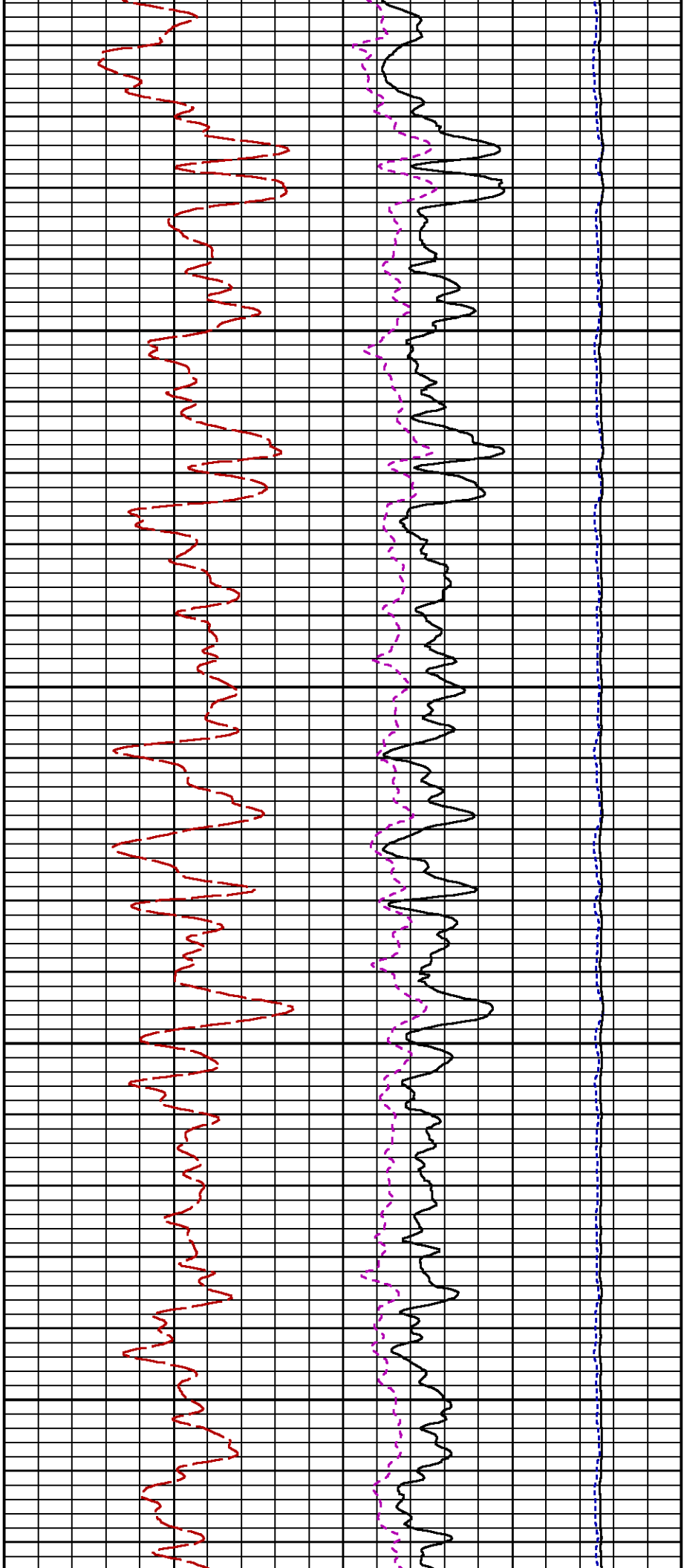
SS

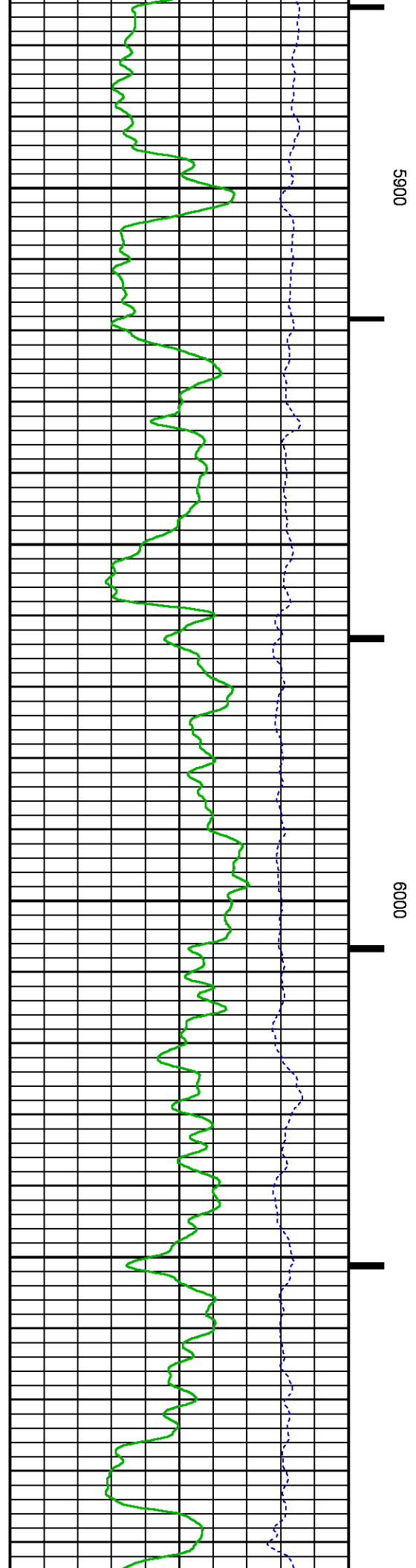
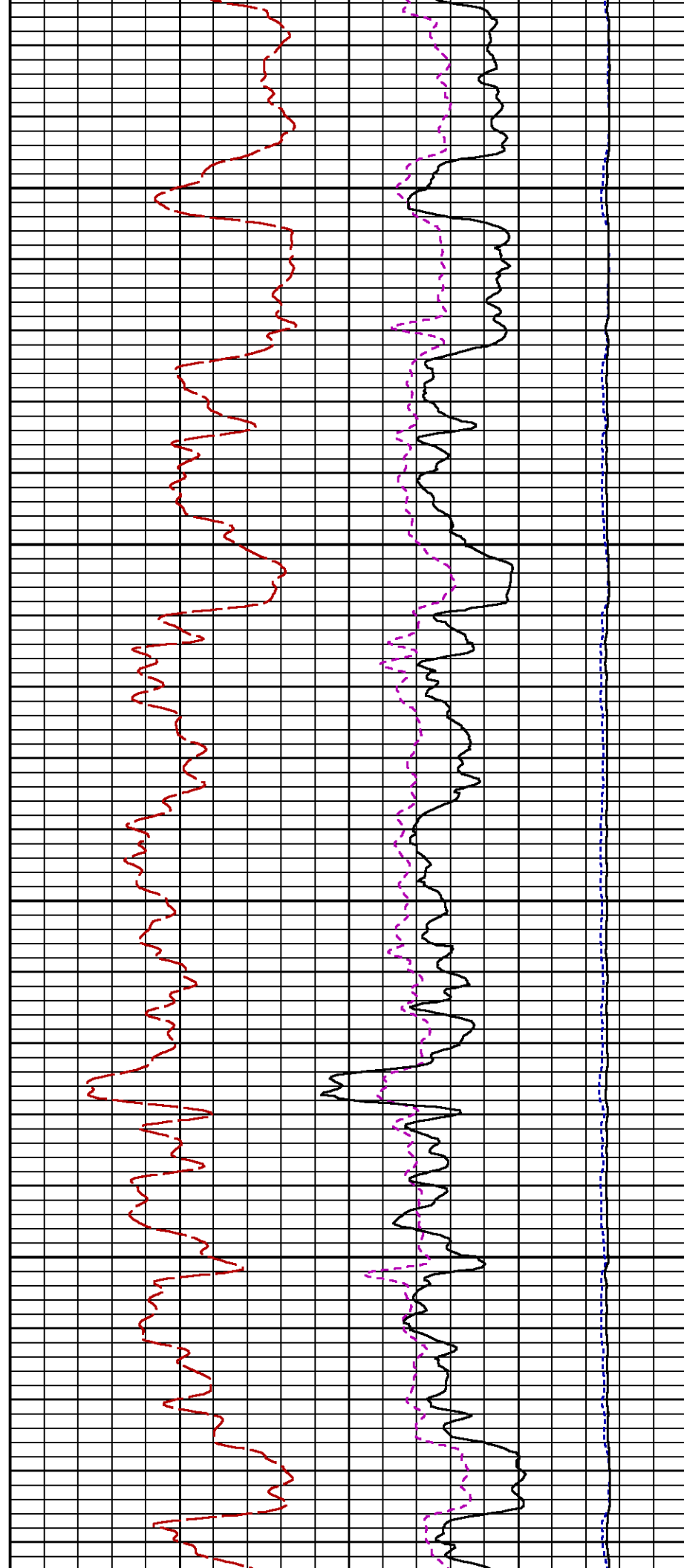


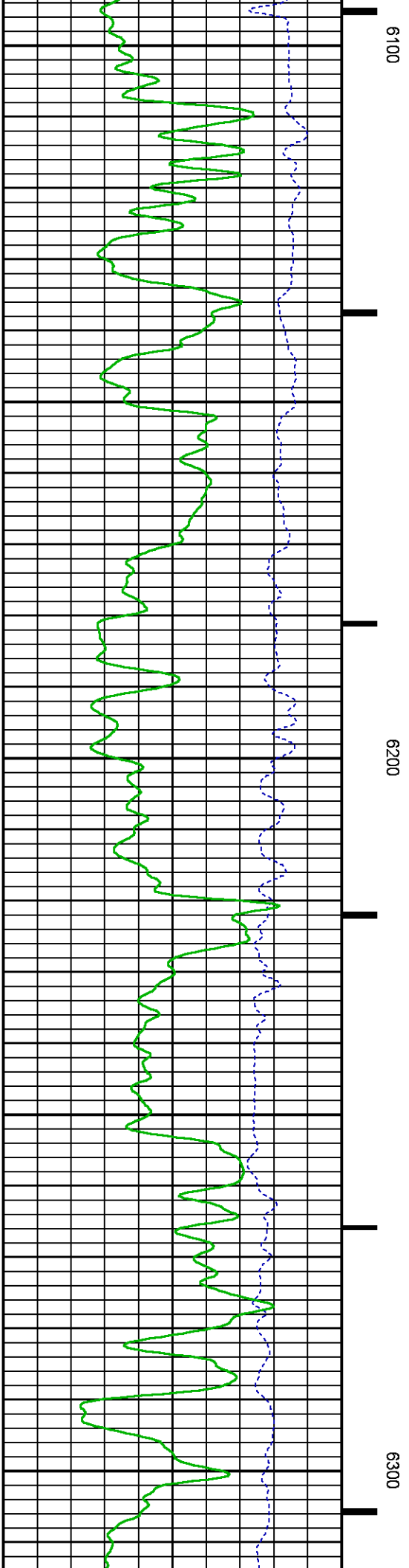
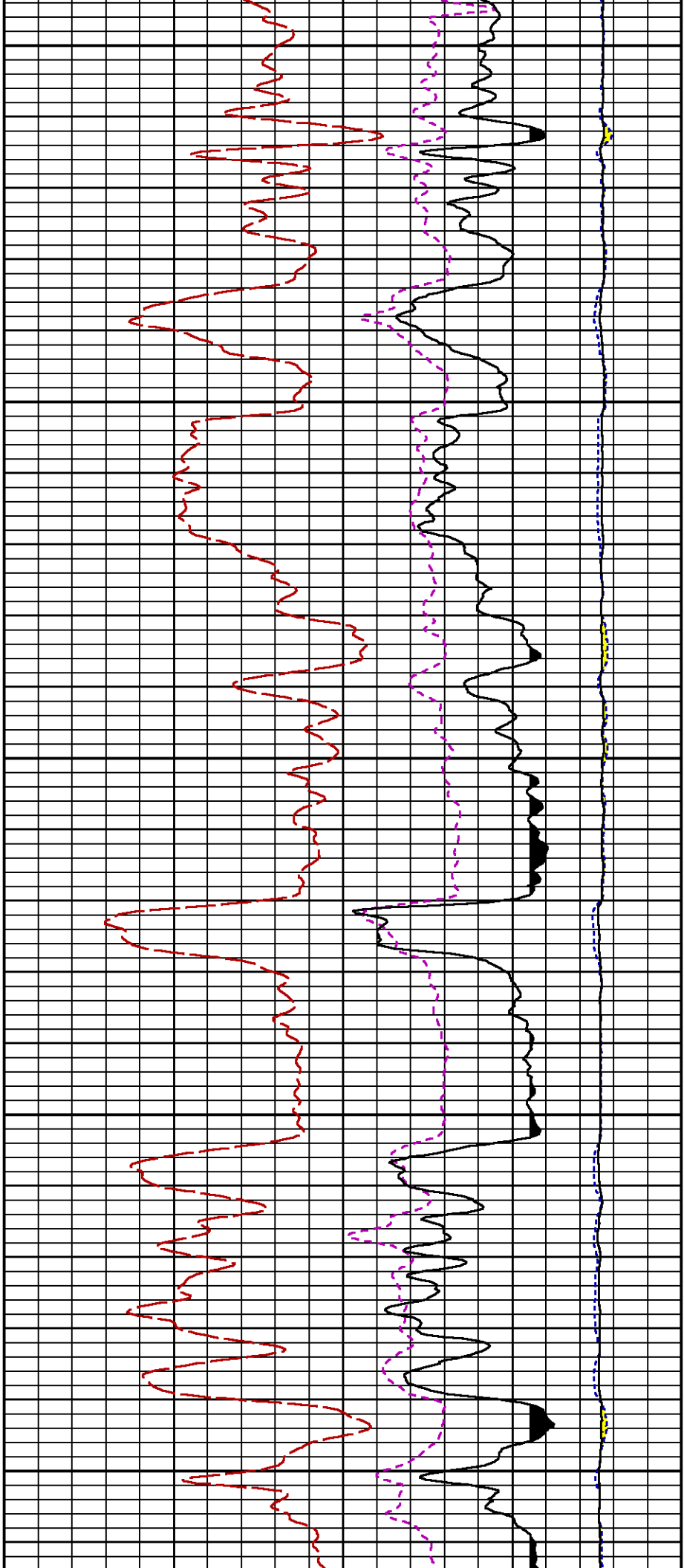


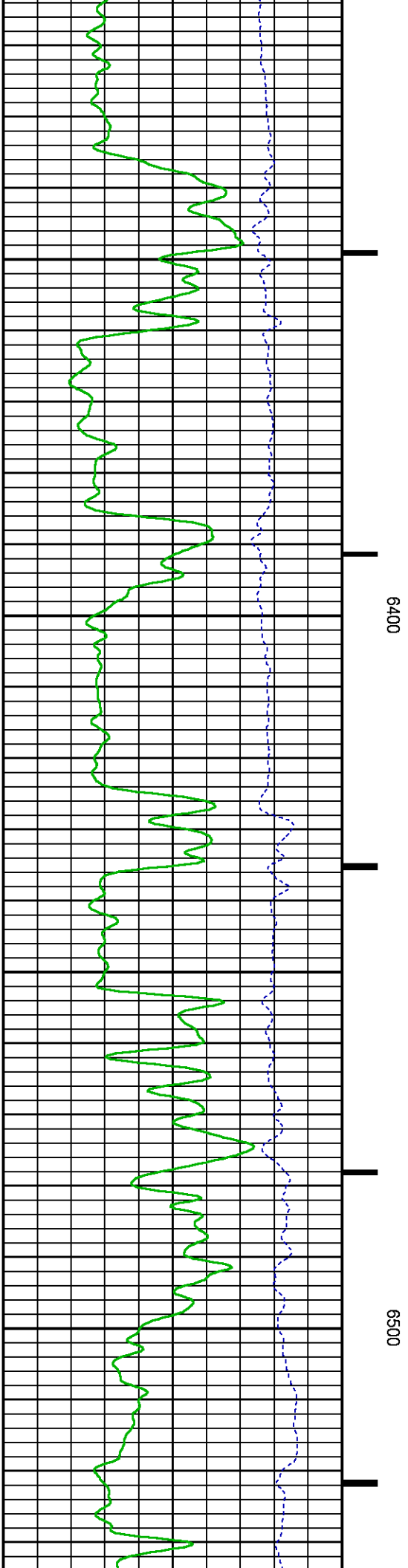
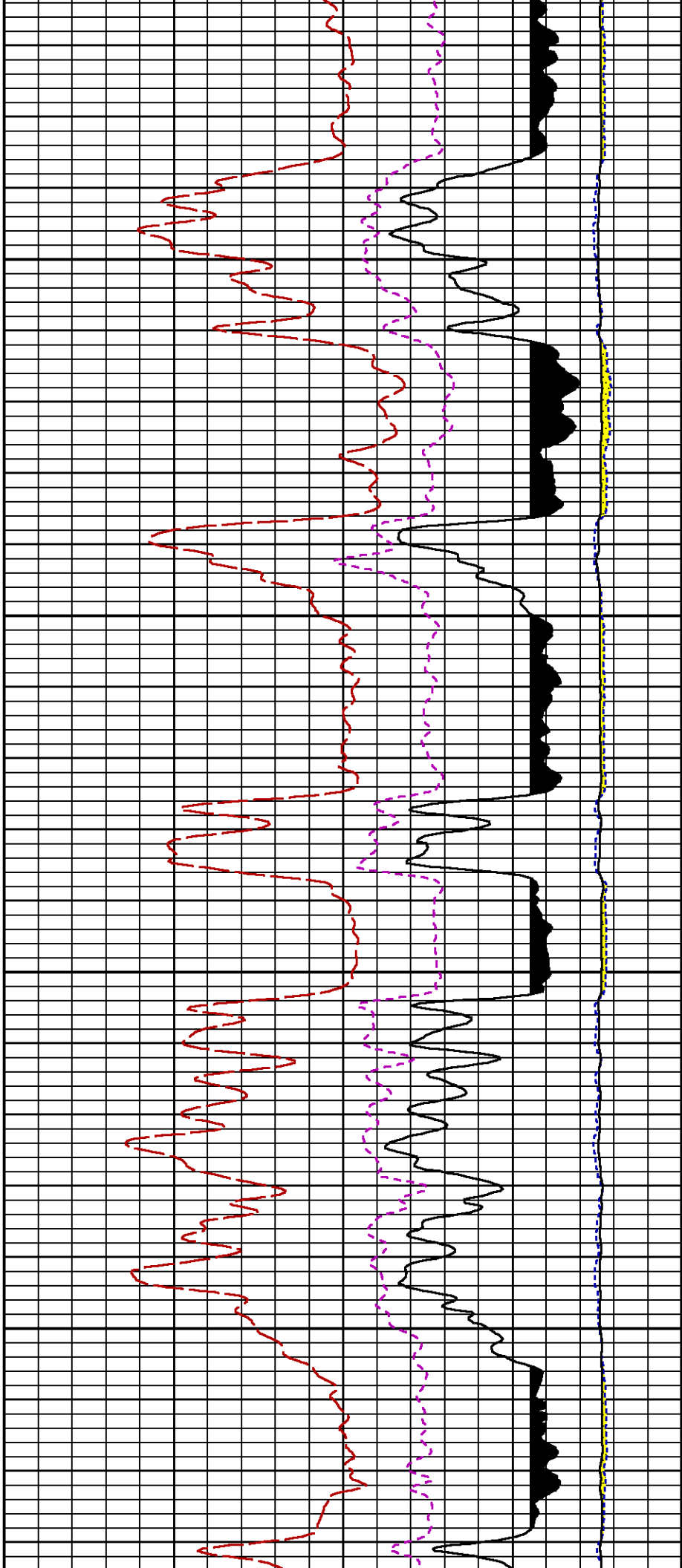


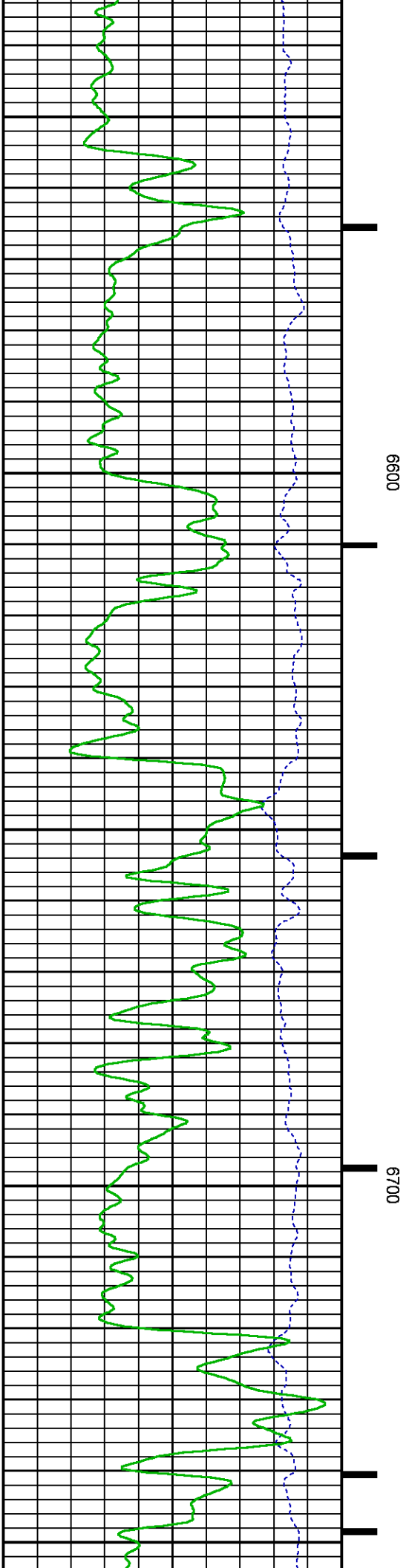
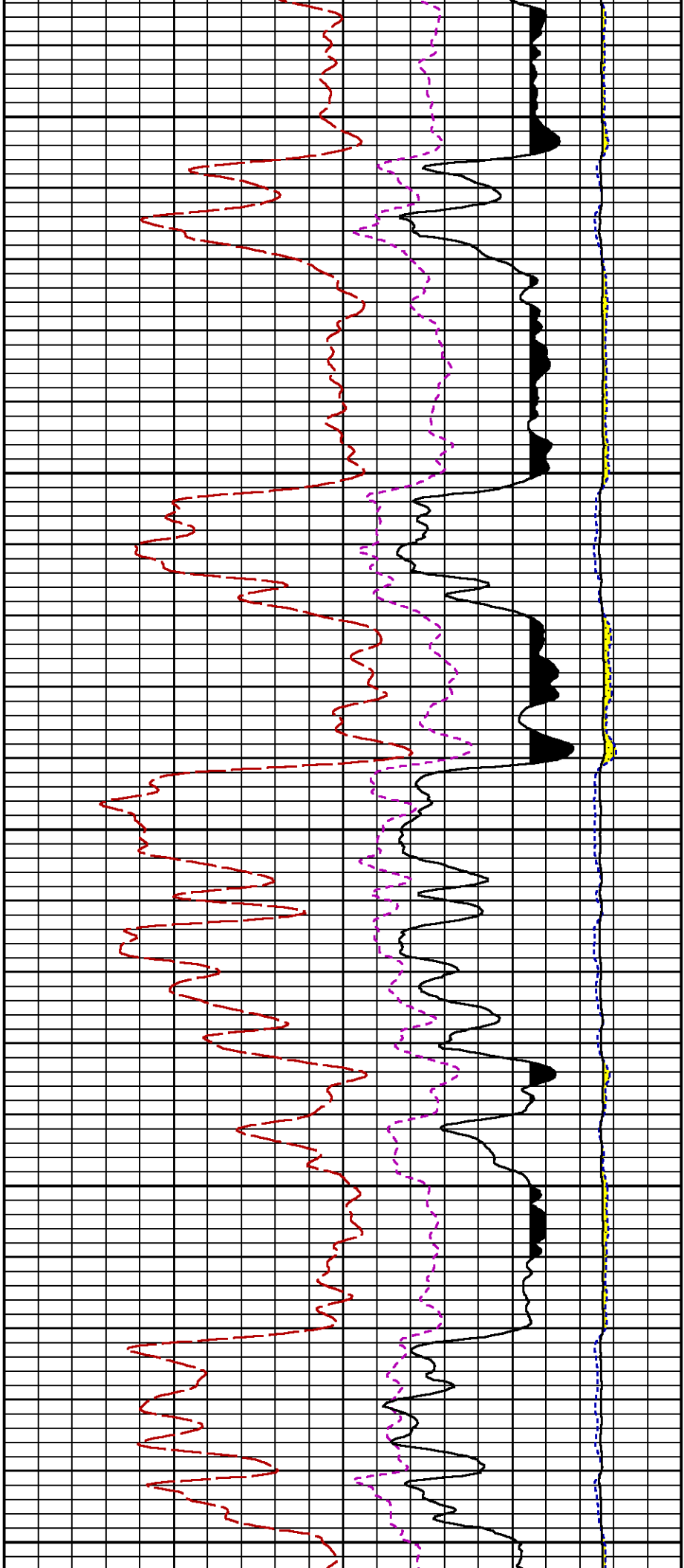


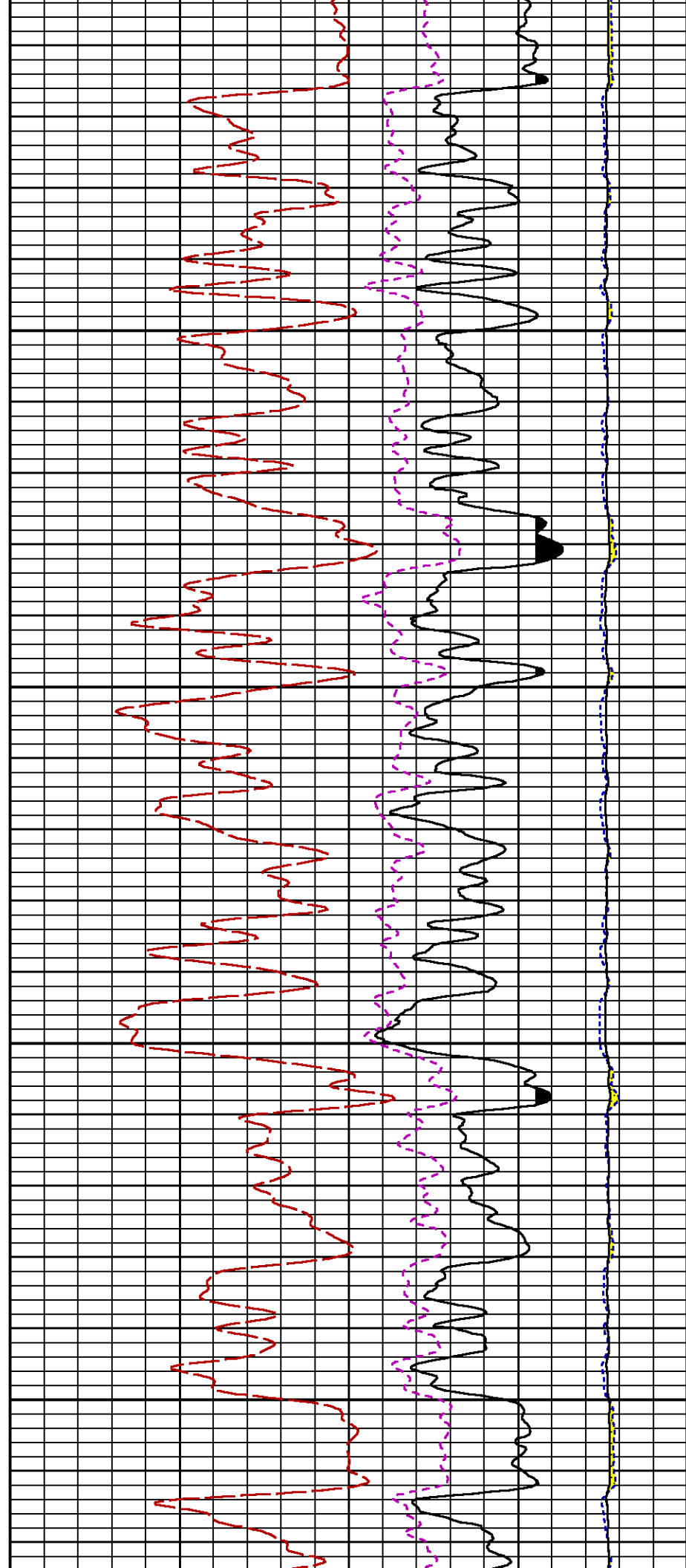






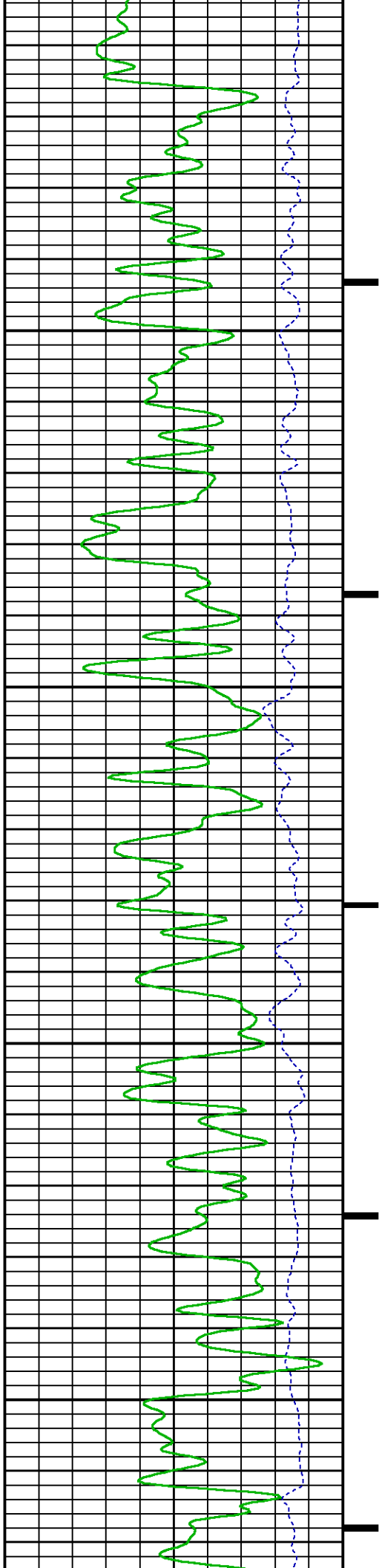


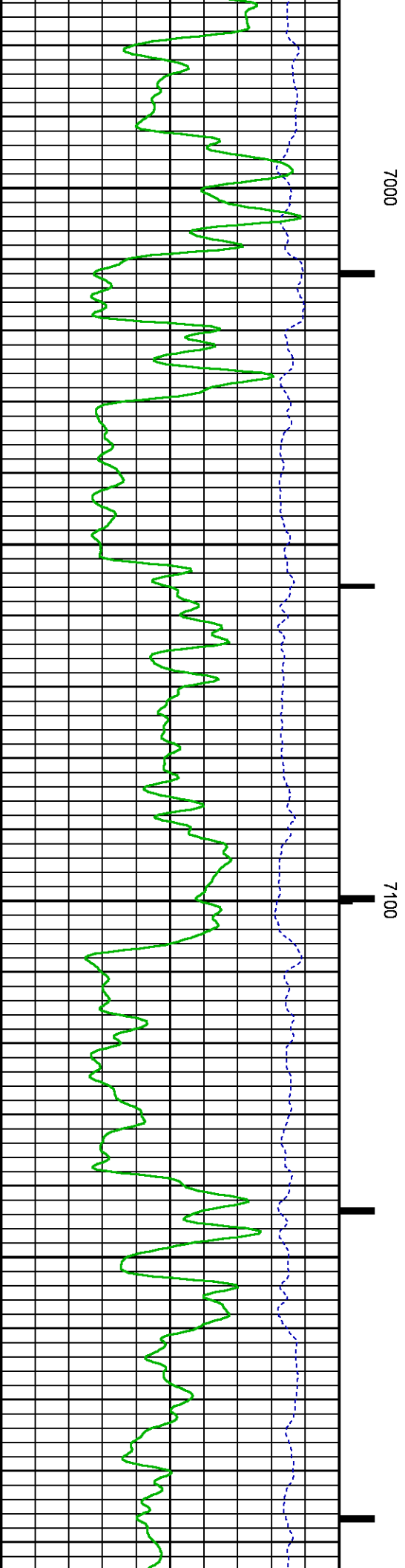
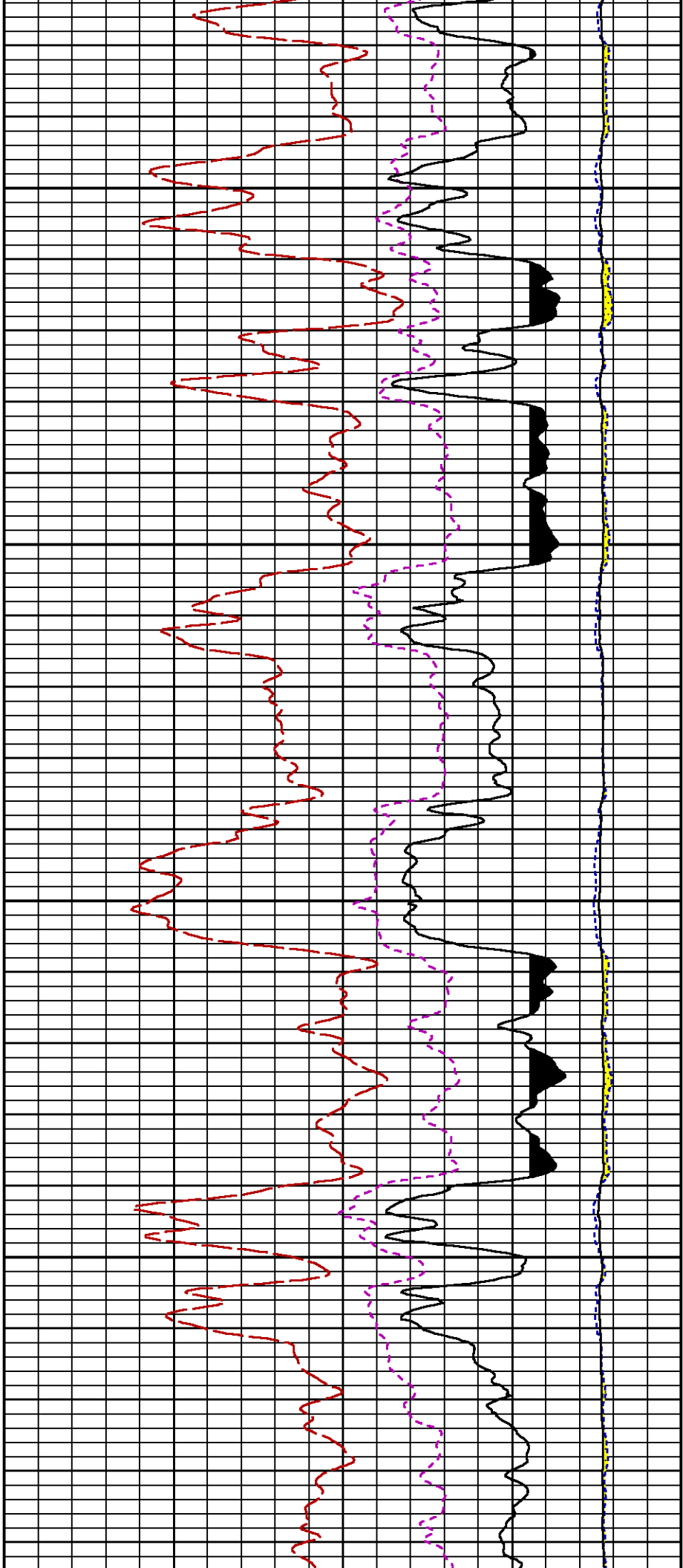


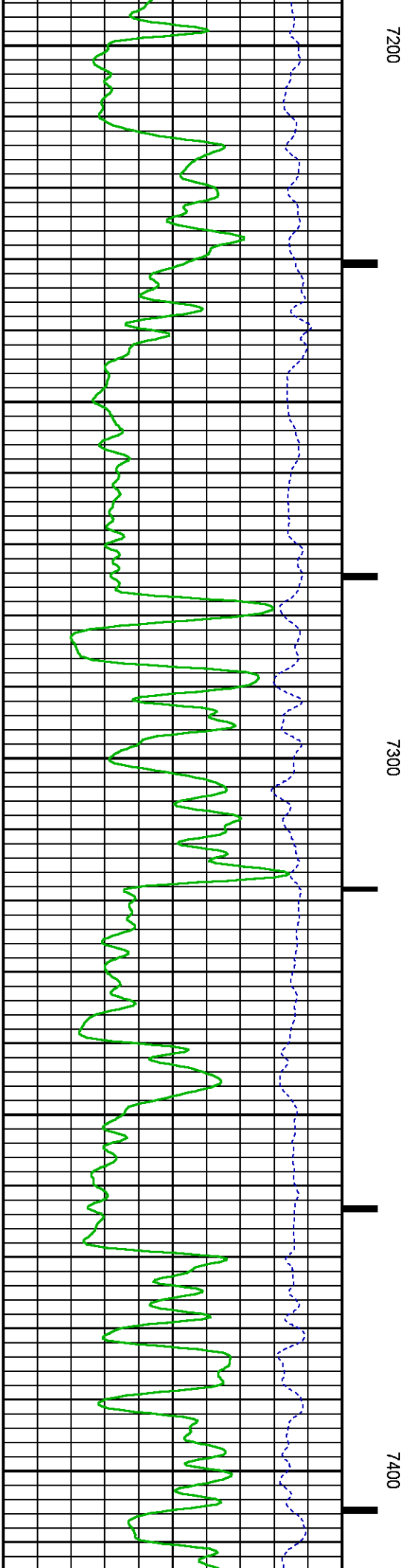
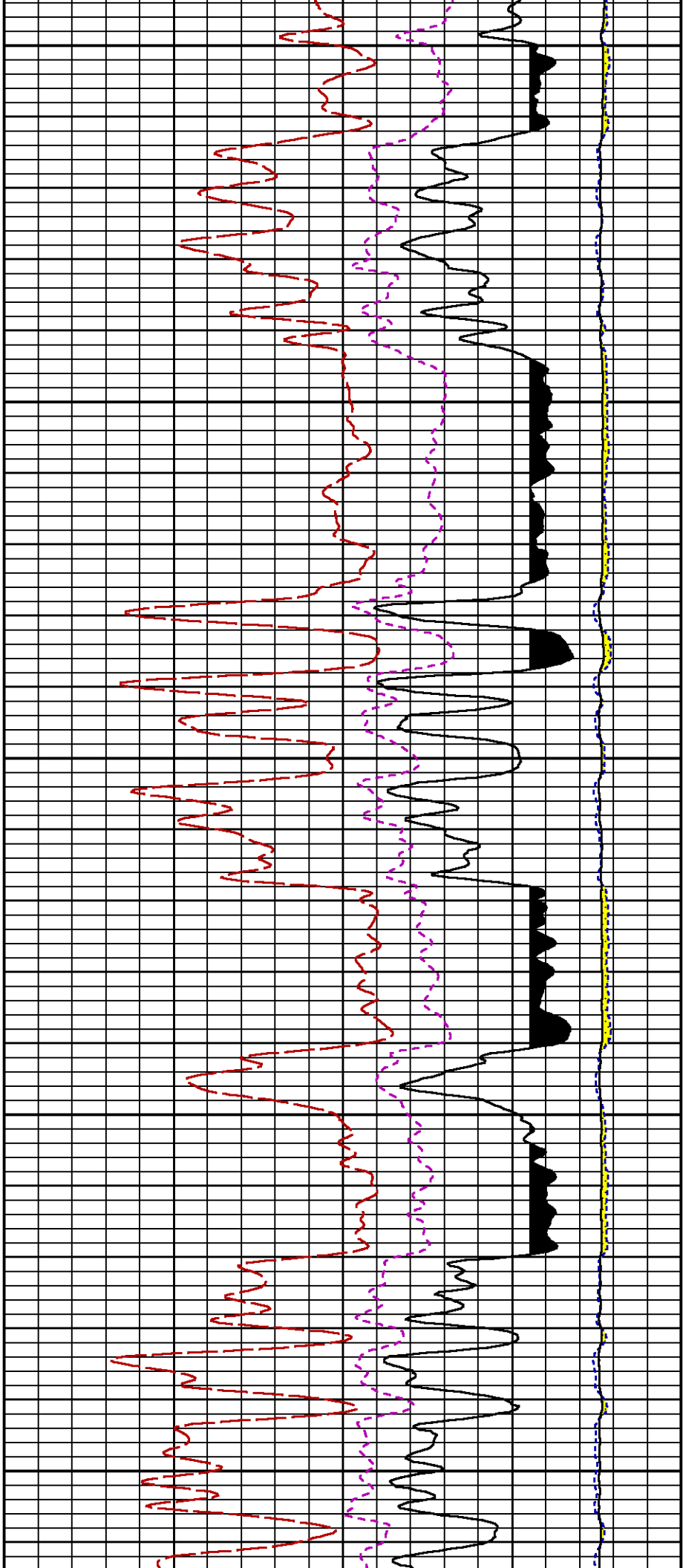


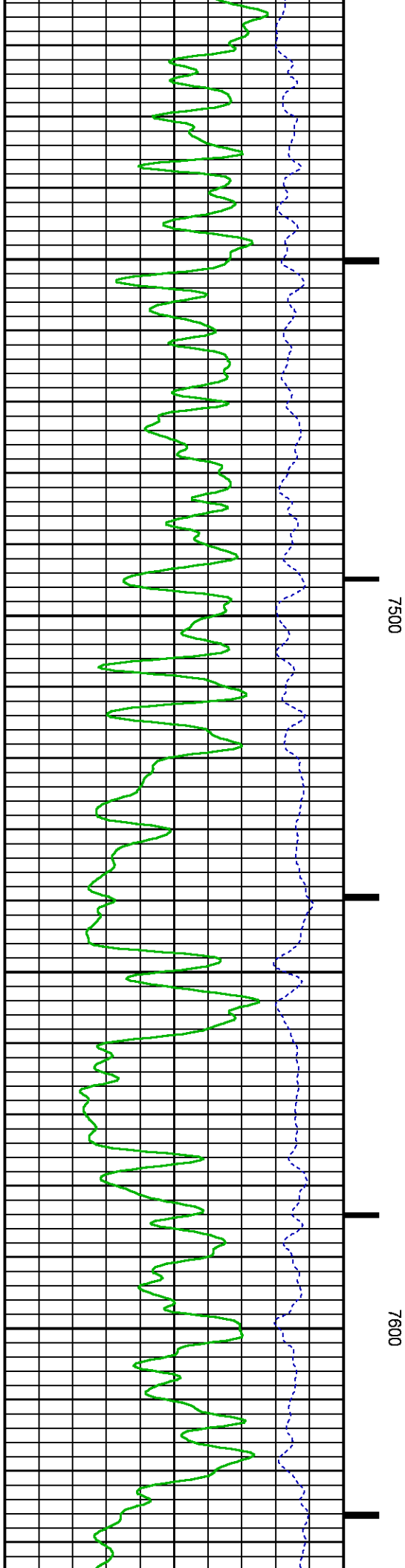
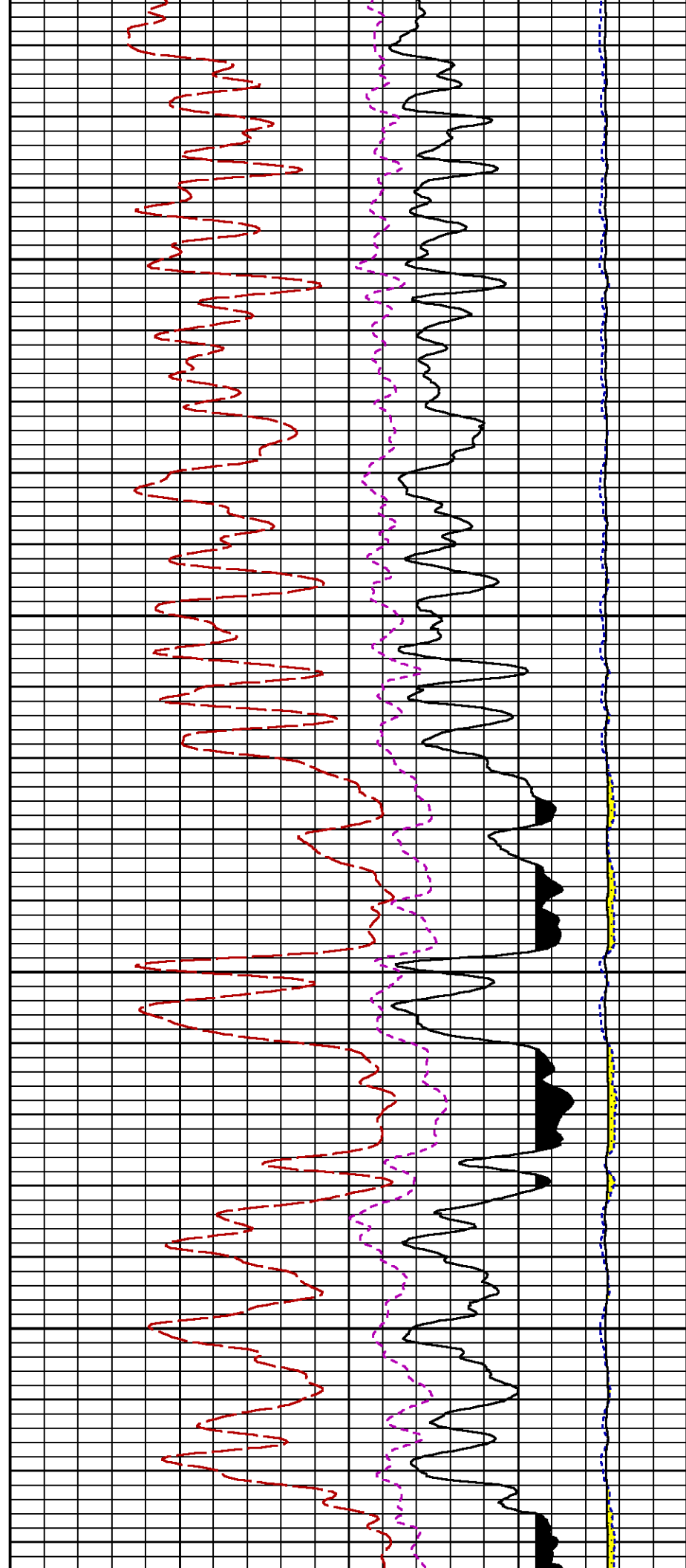
0089

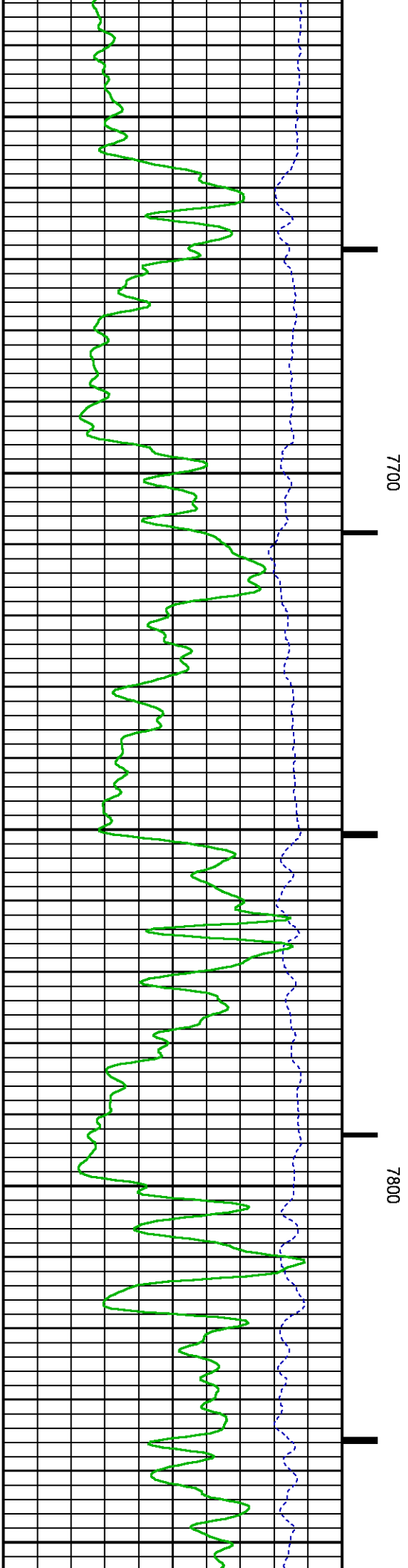
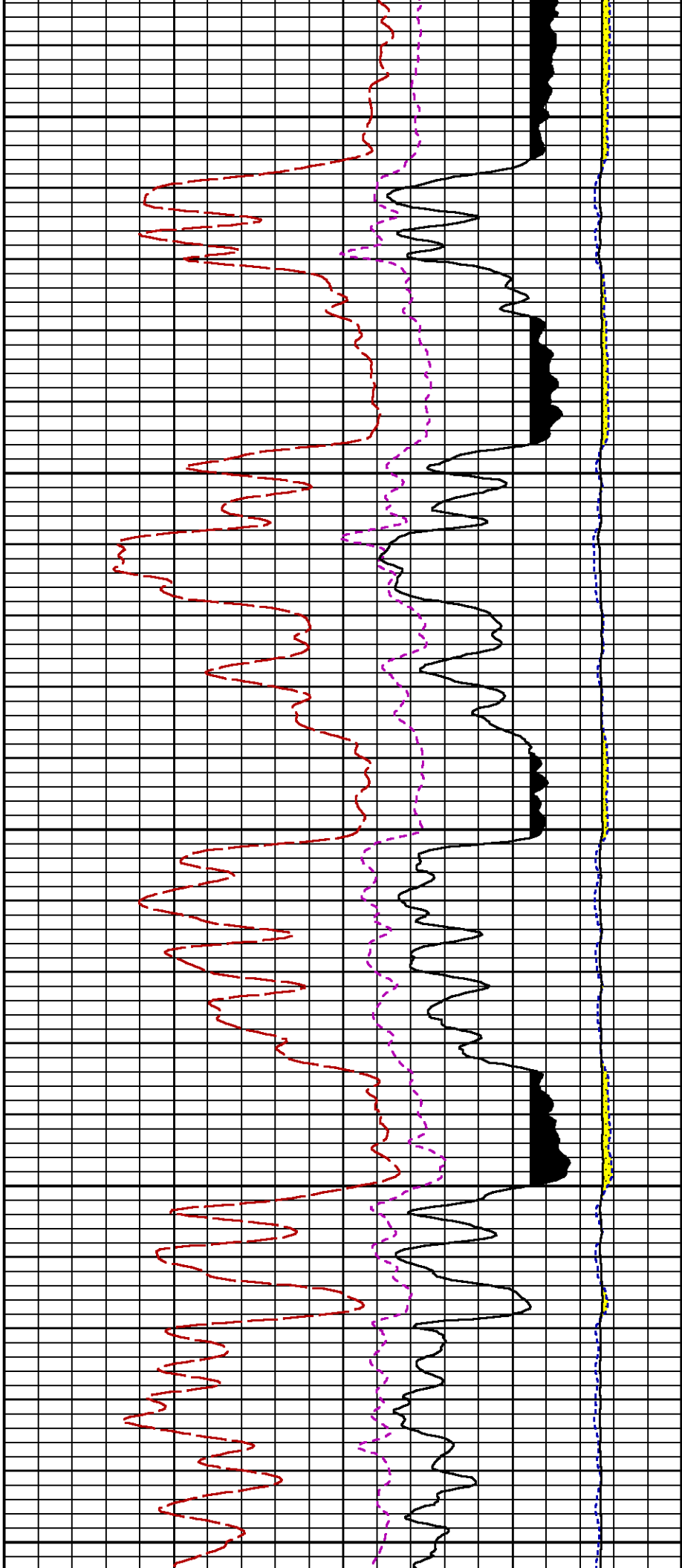
0069

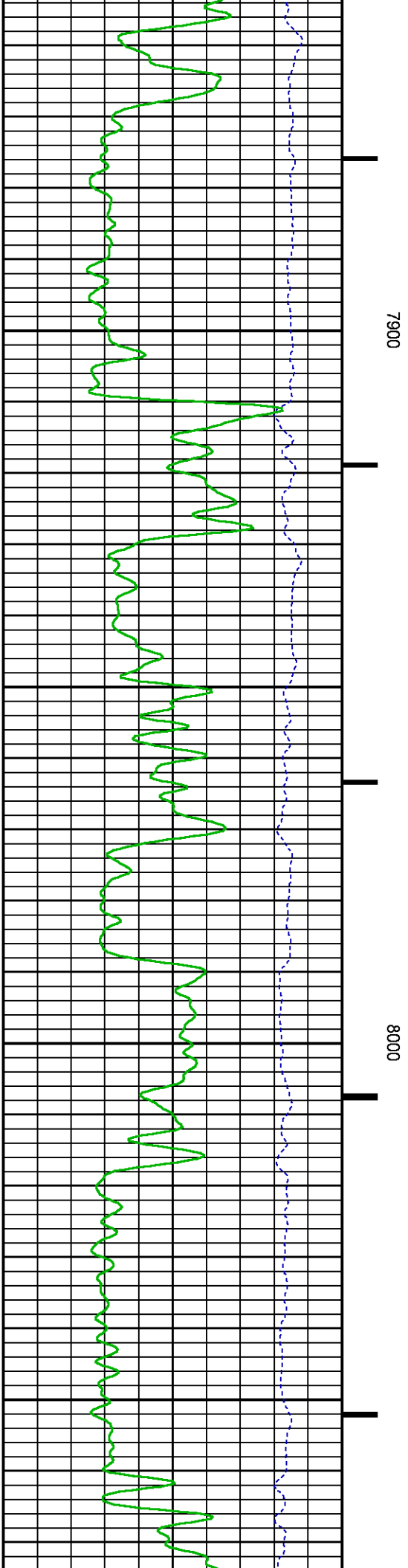
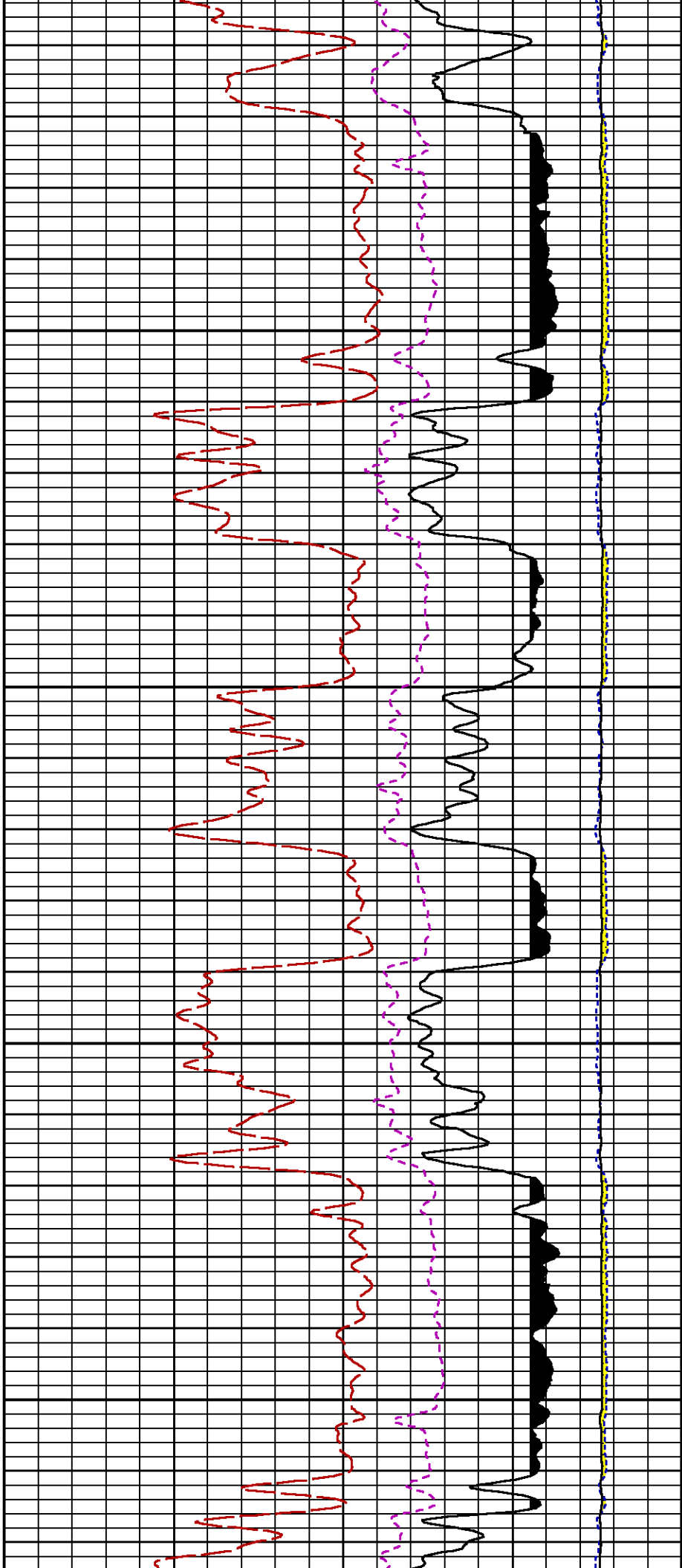


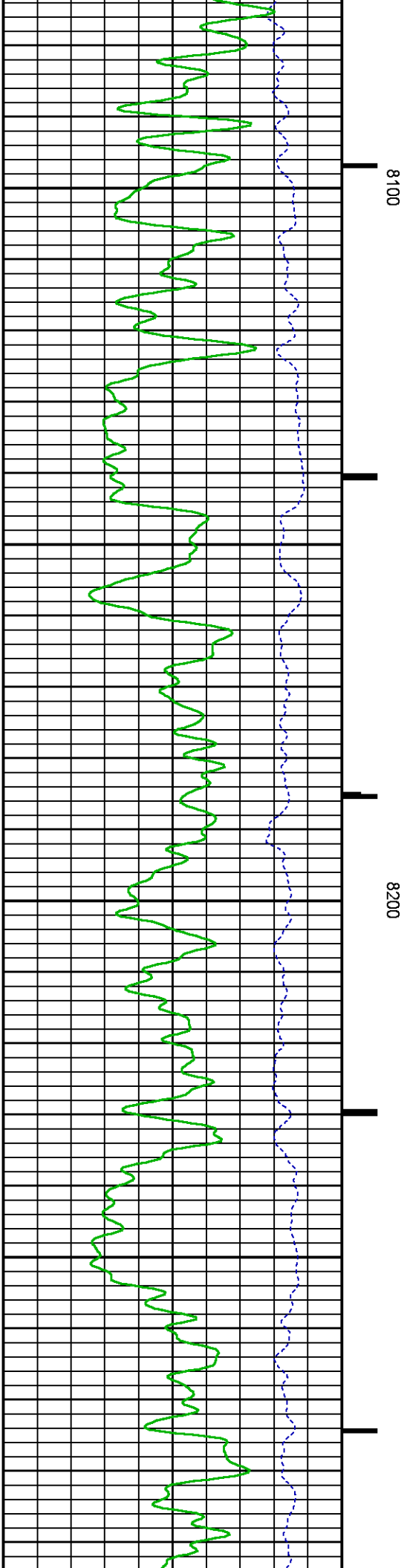
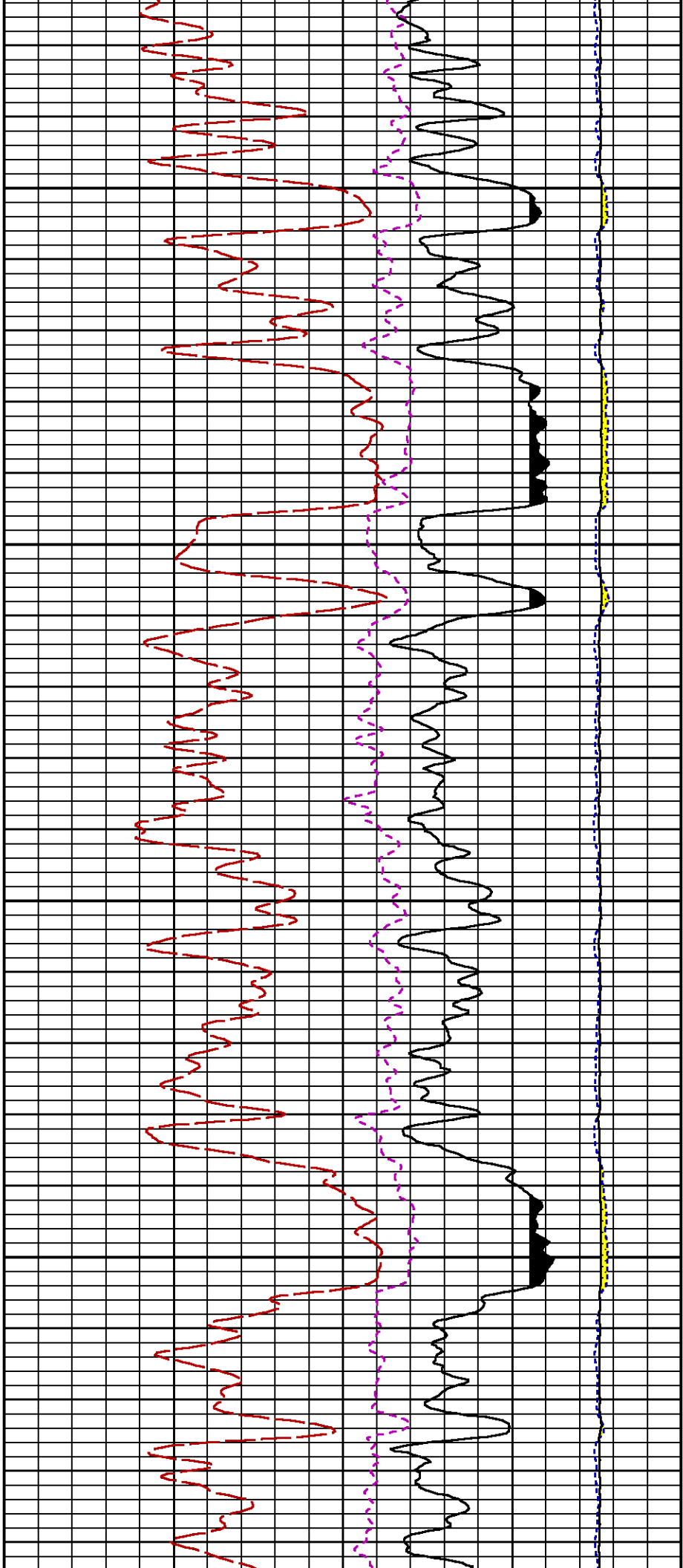


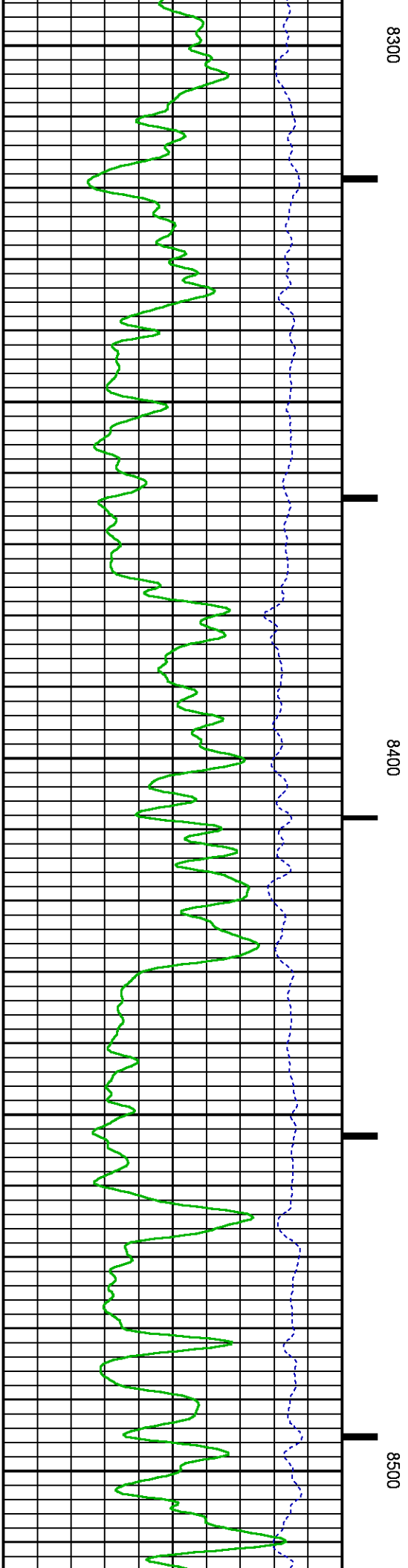
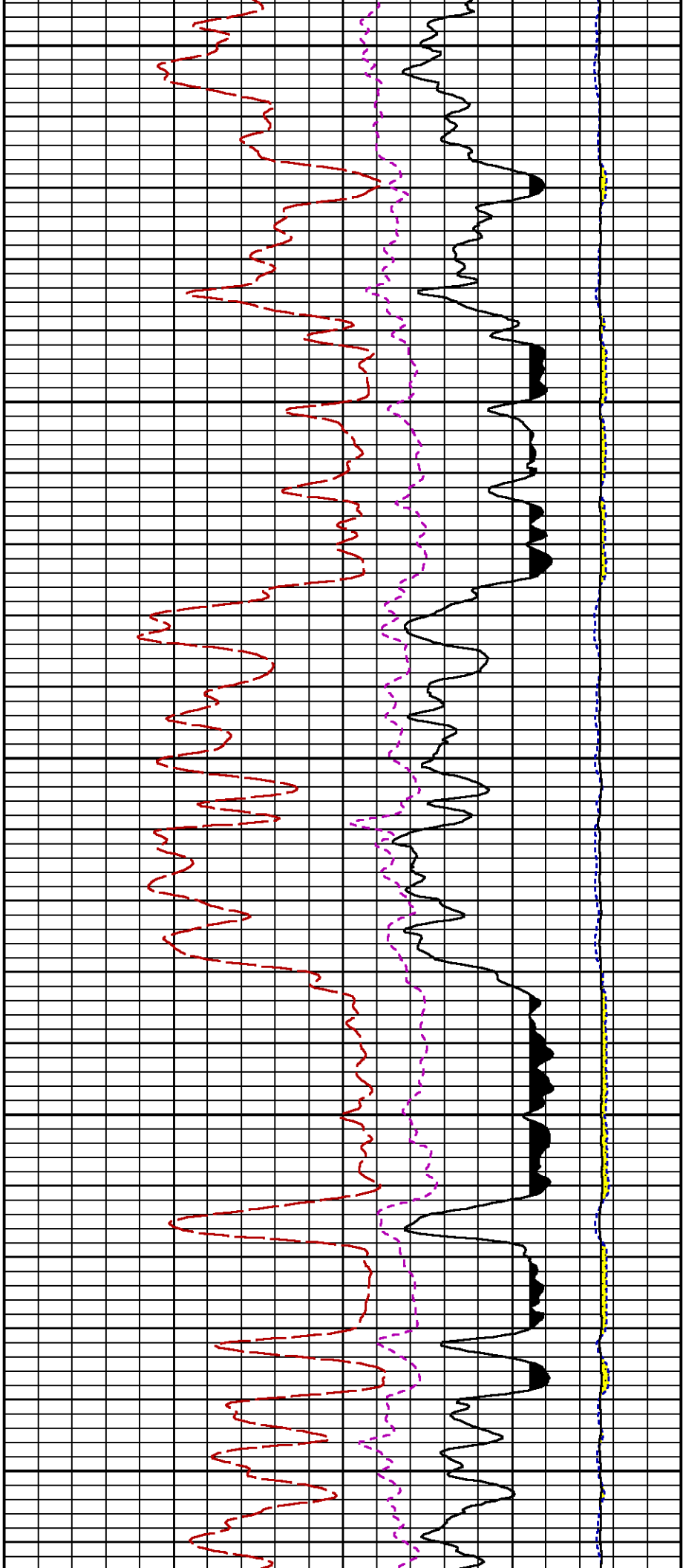


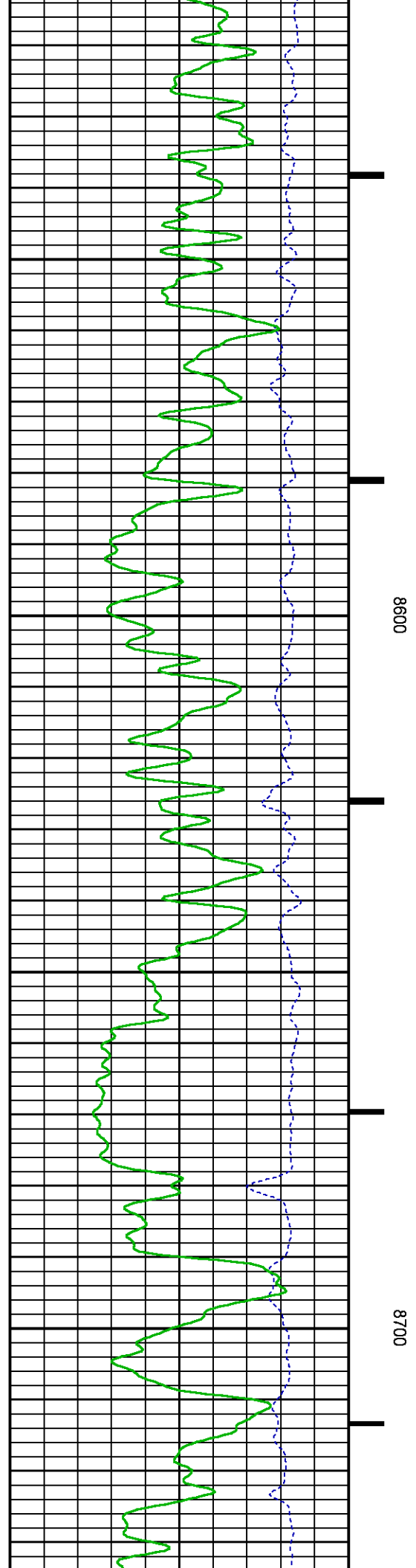
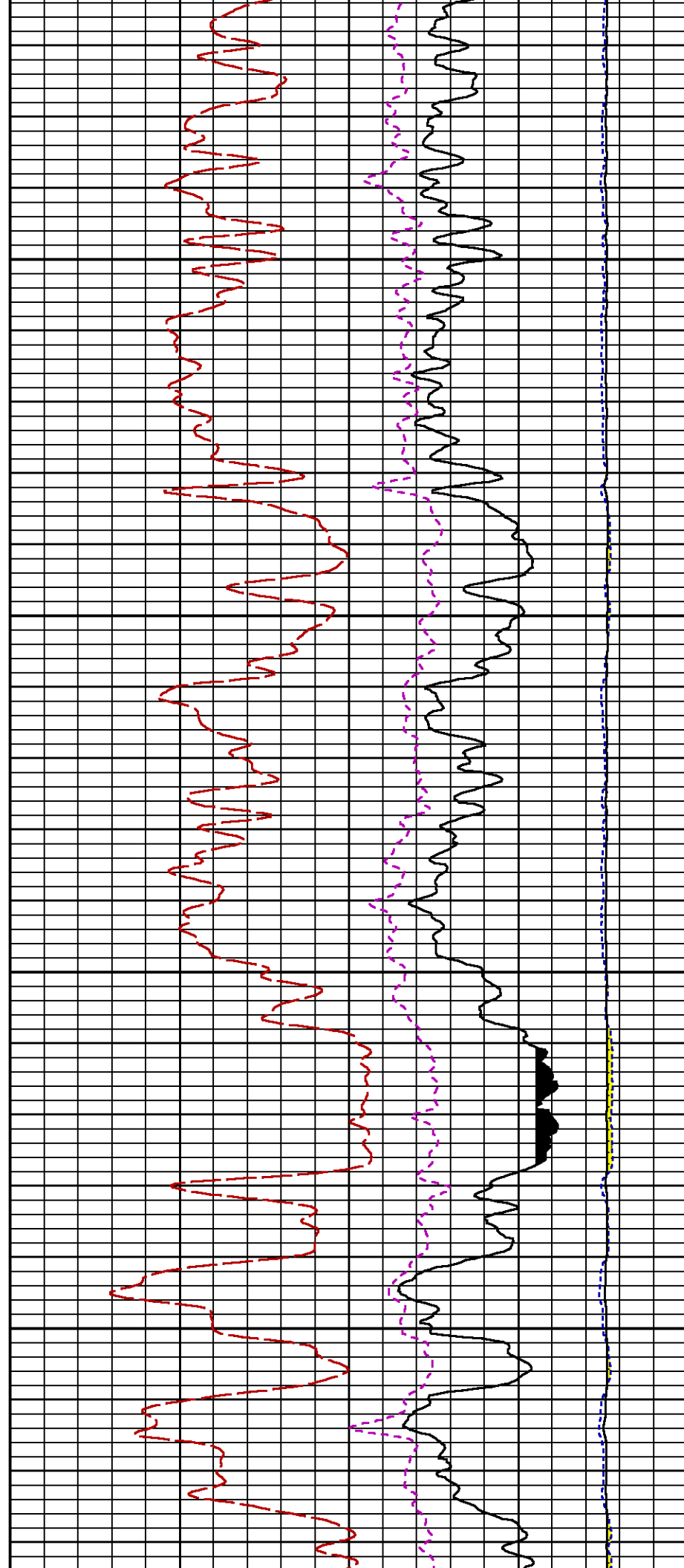


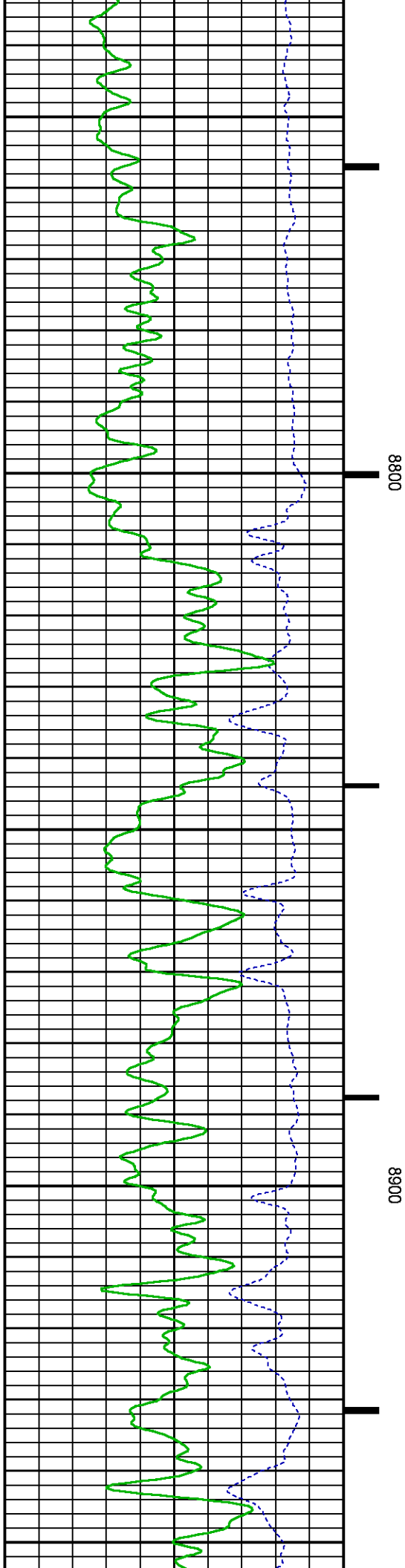
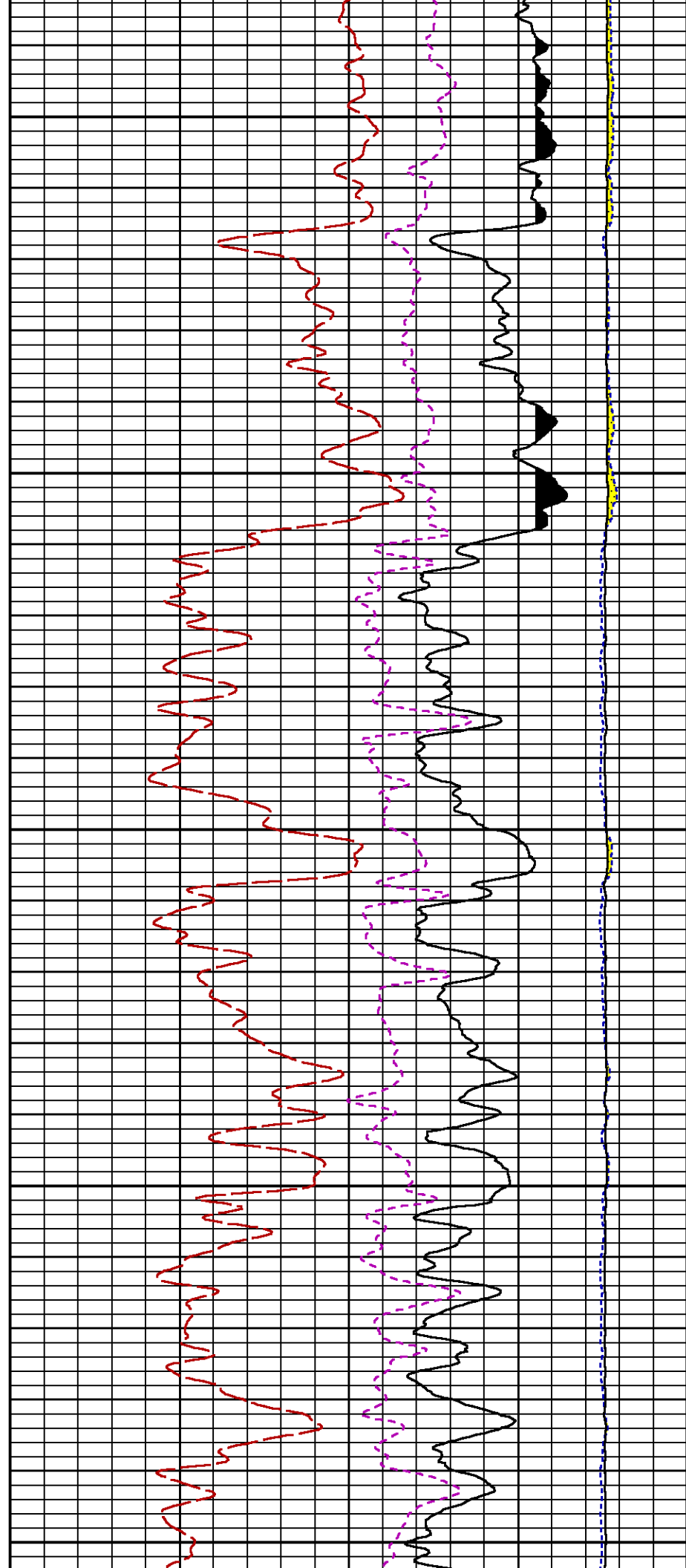


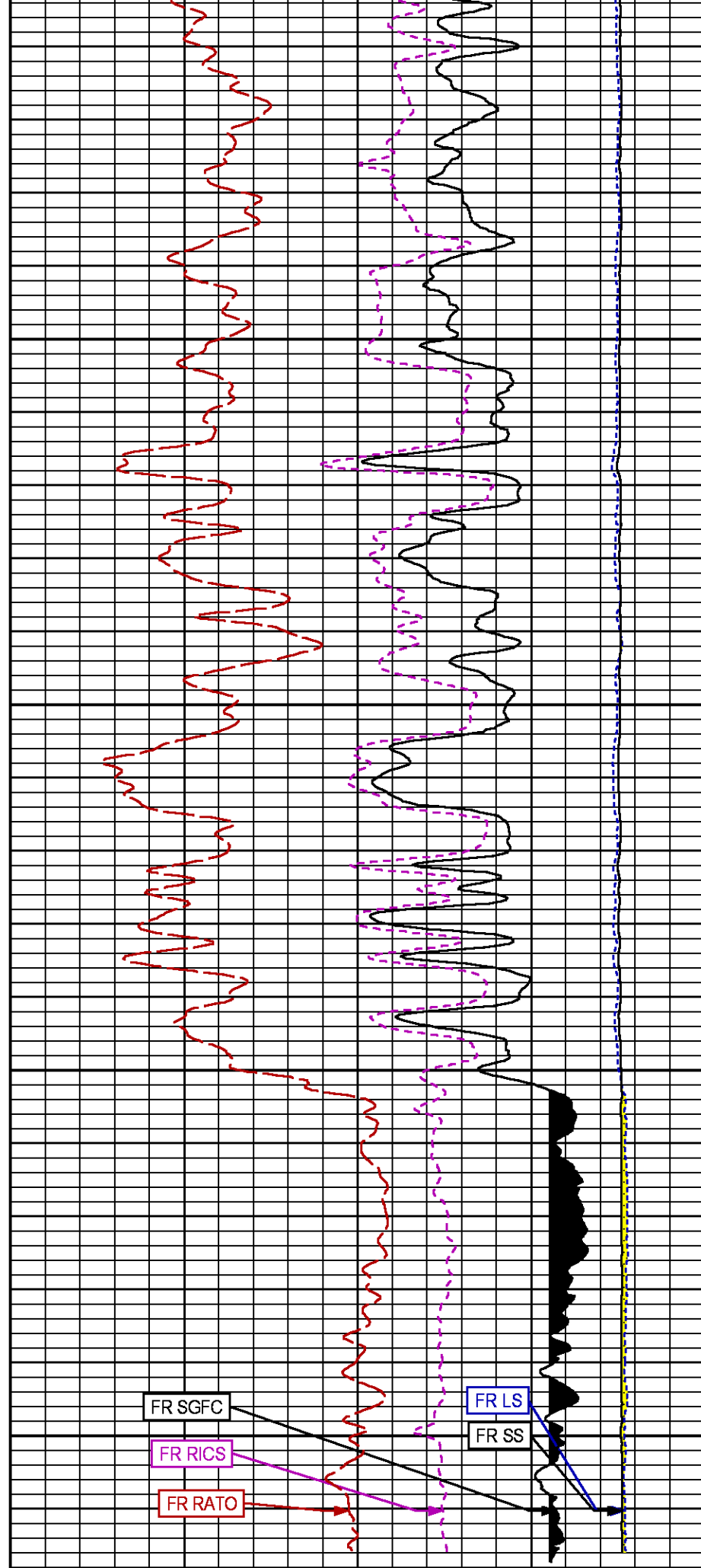
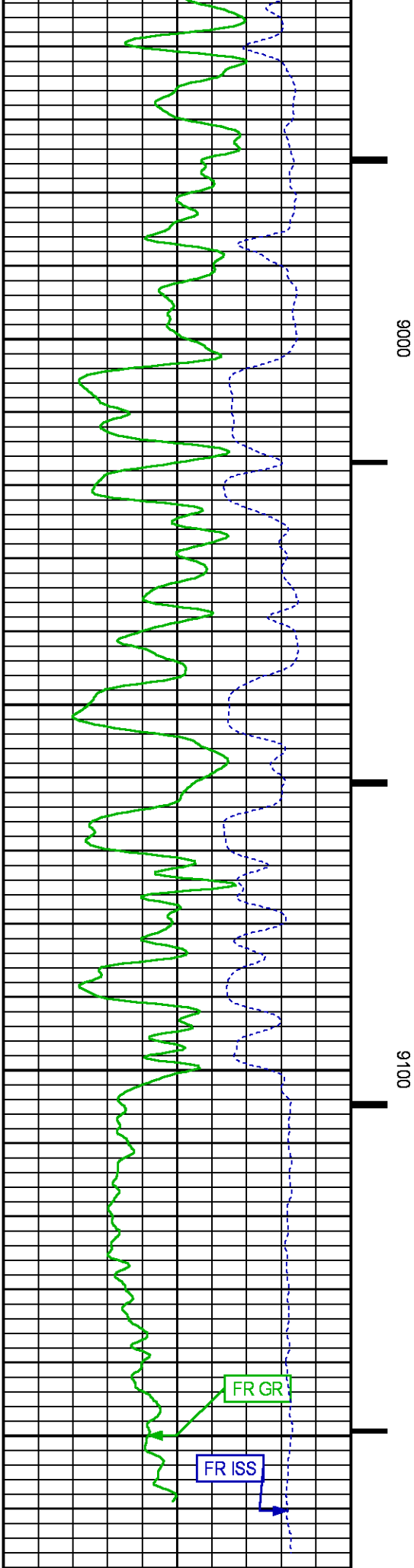












GR BACKUP

ISS [iss]

1E+06

CCL
(mV)

FEET

(cts/s)

GAMMA RAY [gr]

0

150

(gAPI)

LS [ls]

0 29000

(cts/s)

SS [ss]

0 290000

(cts/s)

RATO [rato]

17

0

(dim)

RICS [rics]

39

9

(dim)

SGFC [sgfc]

60

0

(cu)

REPEAT SECTION PNC-3D MODE

ECLIPS 6.2i ECLIPS General Release Rel 6.2i Wed Jun 12 12:21:40 CDT 2013

Updates: 1 Patches: 9

Plotted: Sat Feb 27 15:11:44 2016

PARAMETER AND FILTER SUMMARY REPORT

FILE: /dat1a/CH105973/n353hx01.prm
 LOGGING MODE: DEPTH DIRECTION: UP
 TOP DEPTH: 8946.000 ft BOTTOM DEPTH: 9183.191 ft

SYMMETRIC FILTER

MEASUREMENT TYPE	PARAMETER	VALUE	UNITS	INTERVAL (ft)
GR	FILTER ()	medium (1)		TOP BOTTOM

RPM PROCESSING

MEASUREMENT TYPE	PARAMETER	VALUE	UNITS	INTERVAL (ft)
PNC Parameters	BOREHOLE CONTENTS	FLUID		TOP BOTTOM
	OPEN/CASED HOLE	CASED HOLE		" "
	BOREHOLE SIZE	7.88	in	" "
	CASING SIZE	4.50	in	" "
	MATRIX	SANDSTONE		" "
	CORRECTION BUFFER	11		" "

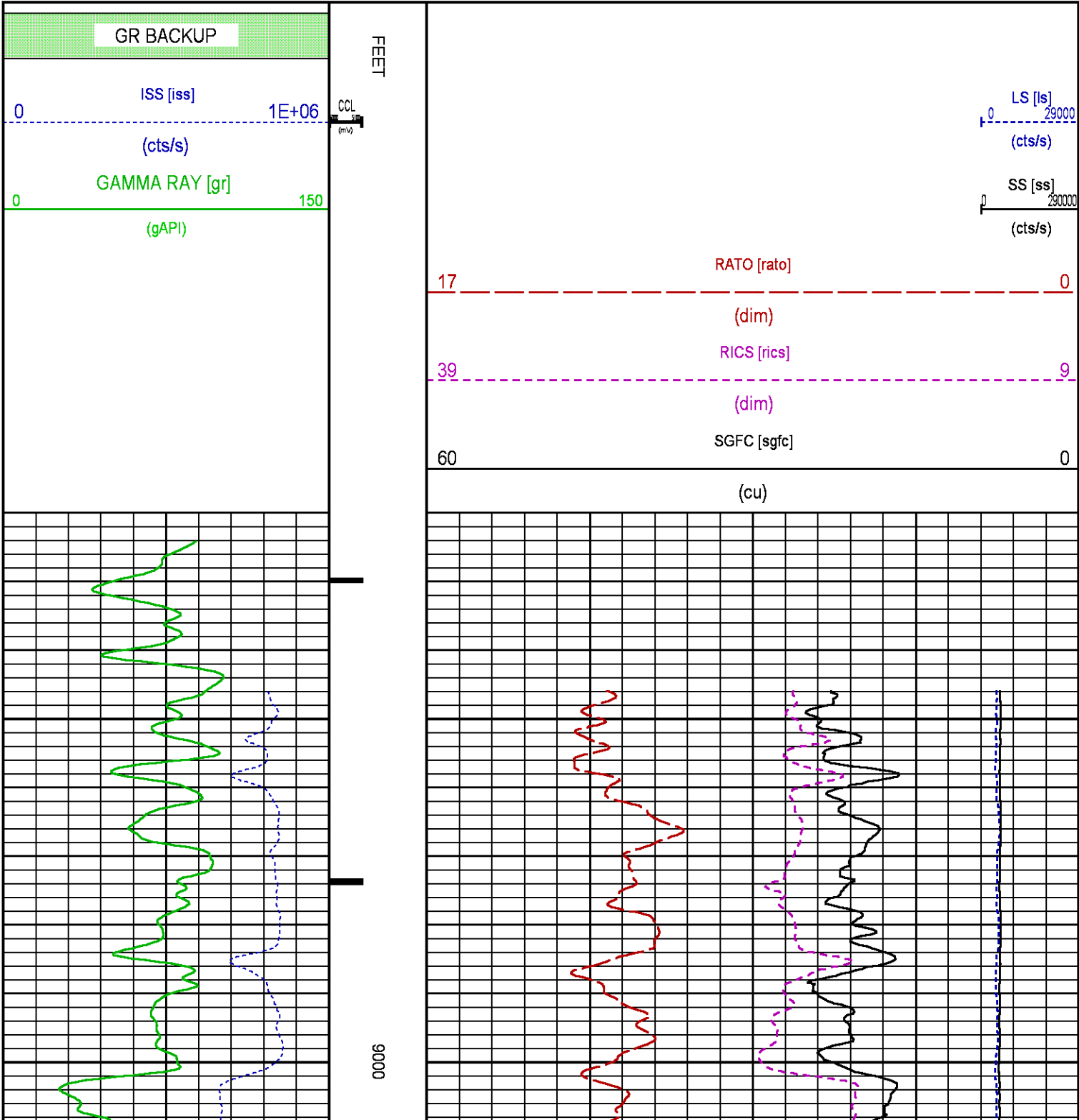
CURVE DESCRIPTION REPORT

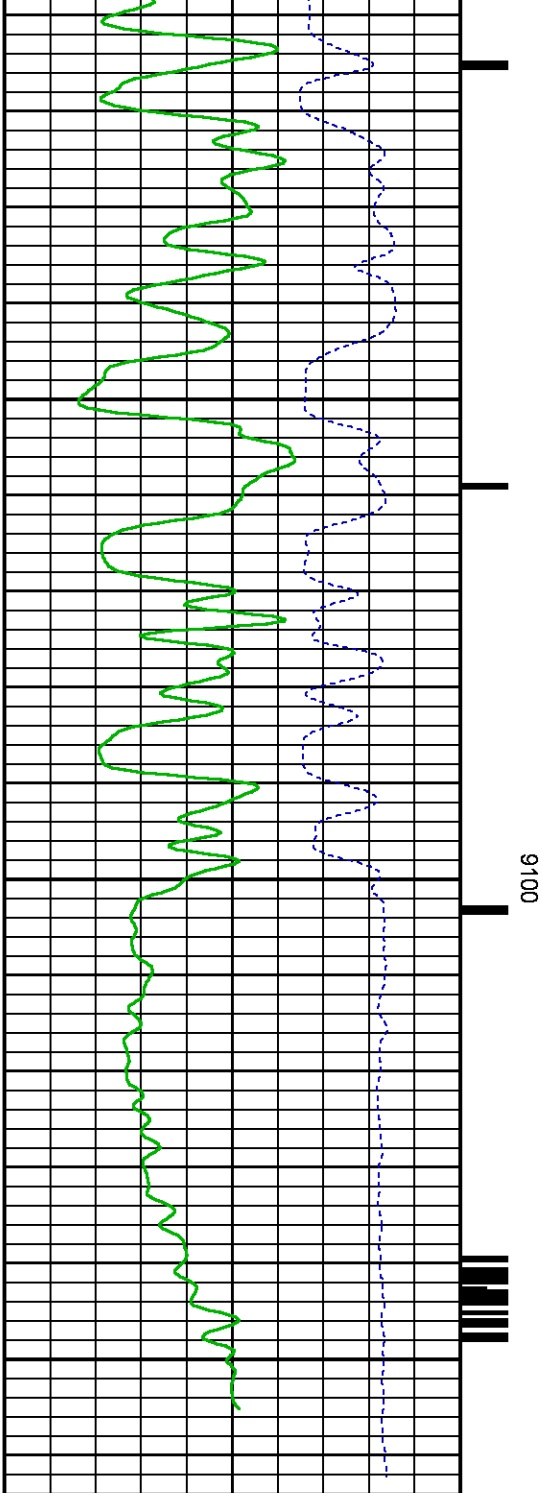
CURVE NAME	CREATION DATE	CURVE DESCRIPTION
F1:CCL	Feb 27 10:09:26 2016	CASING COLLAR LOCATOR
F1:GR	Feb 27 10:09:26 2016	GAMMA RAY
F1:ISS	Feb 27 10:09:26 2016	INELASTIC SHORT SPACE COUNT RATE
F1:LS	Feb 27 10:09:26 2016	LONG SPACE COUNT RATE
F1:RATO	Feb 27 10:09:26 2016	SHORT/LONG SPACE COUNT RATE RATIO
F1:RICS	Feb 27 10:09:26 2016	SHORT SPACE INELASTIC TO CAPTURE COUNT RATE RATIO (ISS/CSS)
F1:SGFC	Feb 27 10:09:26 2016	CORRECTED FORMATION SIGMA
F1:SS	Feb 27 10:09:26 2016	SHORT SPACE COUNT RATE

CURVE MEASURE POINT OFFSET

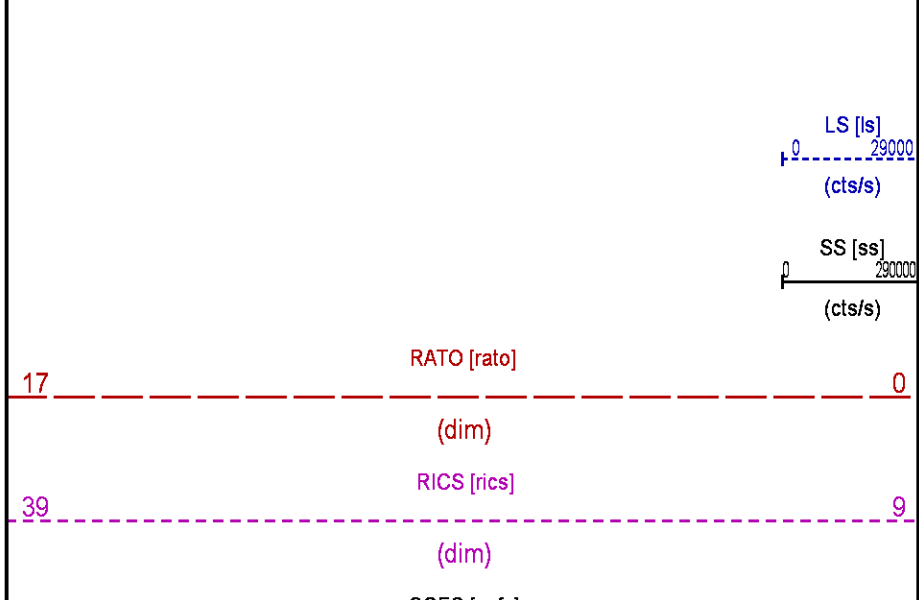
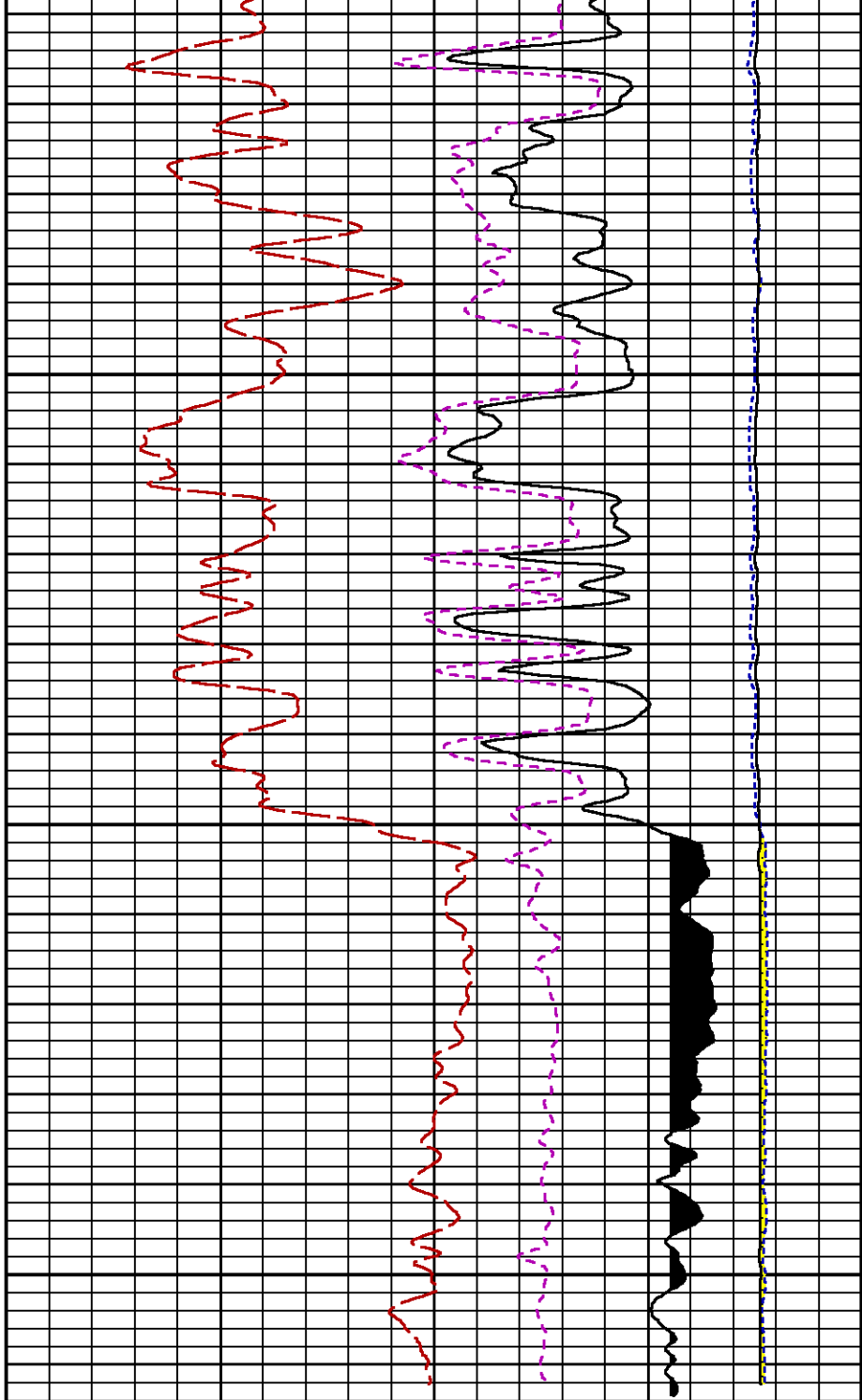
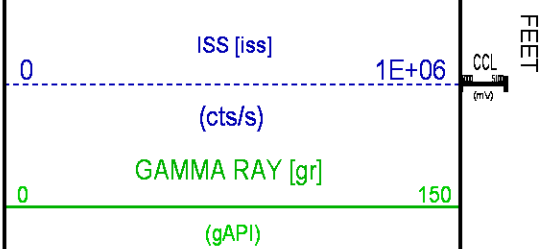
CURVE	OFFSET (ft)	CURVE	OFFSET (ft)	CURVE	OFFSET (ft)	CURVE	OFFSET (ft)
CCL	26.00	ISS	12.75	RATO	12.75	SGFC	12.75
GR	23.00	LS	12.75	RICS	12.75	SS	12.75

Presentation	: cas6685:/dat1a/CH105973/RPM_REPEAT.fvpdf [5"/100' Scale]
Plot Interval	: 8920 - 9163.5 Feet
Data File 1	: F1 : cas6685:/dat1a/CH105973/n353hx01_RPT.xtf
Created On	: Feb 27 10:09:26 2016
Company	: CAERUS OPERATING LLC
Well	: PUCKETT_24C-1
Field	: GRAND VALLEY
File Interval	: 8919.25 - 9179.75 Feet
OCT	: n353hx





GR BACKUP



		60	SGFC [sgic]	0
			(cu)	

CALIBRATION / VERIFICATION SUMMARY

Source File: /dat1a/CH105973/n353hx.tp1

GR PRIMARY CALIBRATION SUMMARY

TOOL #: 8262XA 10485470

DATE/TIME PERFORMED: Fri Feb 19 11:58:11 2016

UNIT #: 3885TD MI4230

CALB JIG #: 4702NK BA-856

	BACKGROUND (cts/s)	CALBRTR ON (cts/s)	CR DIFF (cts/s)	MULT	BACKGROUND (gAPI)	CALBRTR ON (gAPI)	CALBRTR (gAPI)
GR	106.20	451.82	345.6	0.521	55.31	235.31	180

GR PRIMARY VERIFICATION SUMMARY

TOOL #: 8262XA 10485470

DATE/TIME PERFORMED: Fri Feb 19 12:01:19 2016

UNIT #: 3885TD MI4230

VERI JIG #: 4702NK BA-856

	BACKGROUND (cts/s)	CALBRTR ON (cts/s)	MULT	BACKGROUND (gAPI)	CALBRTR ON (gAPI)	DIFF. (gAPI)
GR	106.11	449.09	0.521	55.26	233.89	178.62
						170.00 190.00

RPM_PNC_3D PRIMARY CALIBRATION SUMMARY

TOOL: 8283PA 10169251

DATE/TIME PERFORMED: Fri Feb 19 11:53:57 2016

UNIT: 3885TD MI4230

CALIBRATOR: 2437XB GJ_SHOP

SOURCE: 8281AA 11765055

HOURS: 8281AA 129

	ISS	Mtr Vlt (V)	SS Gain	LS Gain	XLS Gain	EA Temp (degF)	Sync Delay (usec)	RCAL
Raw Data	808799	121	2323	2310	2316	122	7.0	0.9766
Interpolated	1300000	142	2301	2301	2311			

ISS BKS BKL BKX SGA1 SDA1 SGA2 SDA2

Raw Data	808799	7929	1296	163	26.09	0.15	24.20	0.33
					25.35	26.40	0.00	0.20
							23.60	24.80
							0.00	0.40

ISS ILS IXS SS SS2 LS CSS CLS

Raw Data	808799	169212	26330	89116	31701	8255	53960	13211
Fit Quality %		1.349	1.240	1.211	1.174	1.373	1.111	1.370

	ISS	RBOR	RIN	RIN13	RICS	RATO	RTWO	RONE
			ISS/ILS	ISS/IXS	ISS/CSS	SS/LS	SS2/LS	CSS/CLS
Raw Data	808799	1.43	4.78	30.73	14.99	10.80	3.84	4.09
		1.42	1.45	3.55	5.52	22.20	32.70	10.99
						16.34	10.06	11.10
							3.57	3.95
							3.76	4.22
Fit Quality %		0.114	0.041	0.027	0.132	0.131	0.153	0.156
Reduced	1400298	1.43	4.79	30.81	15.01	10.80	3.84	4.09
		1.42	1.45	4.33	5.52	27.60	32.70	13.70
						16.34	10.06	11.10
							3.57	3.95
							3.76	4.22

TPSETEMP PRIMARY CALIBRATION SUMMARY

TOOL #: 8255XA 11774568

DATE/TIME PERFORMED: Wed May 14 12:39:45 2014

UNIT #: 3880TA HL6670

	T(0)	T(1)	T(2)	T(3)
Corr Coeff for Temp	-9.274653E+00	1.055639E-01	2.143764E-06	-2.782846E-10

INSTRUMENT CONFIGURATION

Source File: /dat1a/CH105973/n353hx~joe-tdg

A3 CABLEHEAD

PCM POWER SUPPLY

Diameter : 1.70"
Length : 3.86'
Weight : 18 lbs
Series : 8250EA
Mnemonic : PCM

TELEMETRY / CCL

Diameter : 1.70"
Length : 4.46'
Weight : 20 lbs
Series : 8248ED
Mnemonic : PCM
Measure Point: 1.00': CCL MP

GAMMA RAY

Diameter : 1.70"
Length : 3.02'
Weight : 15 lbs
Series : 8262XA
Mnemonic : GR

34.08'

CCL MP 26.03'

GR MP 22.90'

Measure Point: 0.89': GR MP

RPM ELECTRONICS

Diameter : 1.70"
Length : 4.48'
Weight : 16 lbs
Series : 8281EA
Mnemonic : RPM

RPM C DETECTOR SECTION

Diameter : 1.70"
Length : 9.40'
Weight : 41 lbs
Series : 8283PA
Mnemonic : RPM
Measure Point: 5.45': XLS DETECTOR
Measure Point: 5.04': LS DETECTOR
Measure Point: 4.79': SS DETECTOR

XLS DETECTOR 13.58'
LS DETECTOR 13.16'
SS DETECTOR 12.91'

RPM SOURCE SECTION

Diameter : 1.70"
Length : 4.70'
Weight : 18 lbs
Series : 8281FA
Mnemonic : RPM

TEMPERATURE / PRESSURE

Diameter : 1.70"
Length : 3.30'
Weight : 13 lbs
Series : 8255XA
Mnemonic : SRPL
Measure Point: 1.52': TEMP MP

TEMP MP 1.65'
PRES MP 0.00'

BULL PLUG 1 11/16

TOTAL LENGTH: 34.08'
TOTAL WEIGHT: 144 lbs
MAX DIAMETER: 0'1.70"



COMPANY CAERUS OPERATING LLC
WELL PUCKETT 24C-1
FIELD GRAND VALLEY
COUNTY GARFIELD STATE COLORADO

FILE NO:
CH105973
API NO:
05045226130000

LOCATION:
SHL: 317' FEL 1074' FSL S2 T7S R97W
BHL: 2051' FEL 488' FSL S1 T7S R97W
SE/SE
SEC 1 TWP 7S RGE 97W

ELEVATIONS:
KB 8453.8 FT
DF
GL 8423.8 FT
DATE 27-FEB-2016

SEC 1 T7S R97W
H&P 330
MESA P2 797 PAD