

# HALLIBURTON

iCem<sup>®</sup> Service

## **CAERUS OIL AND GAS LLC - EBUS**

**For: Steve Schmitz**

Date: Sunday, January 10, 2016

## **PUCKETT 13D-1 Surface**

**API # 05-045-22615-00**

Job Date: Sunday, January 10, 2016

Sincerely,

**Grand Junction Cement Engineering**

## 2.0 Real-Time Job Summary

### 2.1 Job Event Log

Type	Seq. No.	Graph Label	Date	Time	Source	DH Density (ppg)	Comb Pump Rate (bbl/min)	PS Pump Press (psi)	Pump Stg Tot (bbl)	Comments
Event	1	Call Out	1/9/2016	16:00:00	USER					ELITE # 6
Event	2	Pre-Convoy Safety Meeting	1/9/2016	18:00:00	USER					ALL HES EMPLOYEES
Event	3	Arrive At Loc	1/9/2016	22:00:00	USER					ARRIVED 2 HOURS EARLY DIDNT START CHARGING HOURS UNTIL REQUESTED ON LOCATION TIME
Event	4	Assessment Of Location Safety Meeting	1/9/2016	22:15:00	USER					ALL HES EMPLOYEES
Event	5	Pre-Rig Up Safety Meeting	1/9/2016	22:30:00	USER					ALL HES EMPLOYEES
Event	6	Rig-Up Equipment	1/9/2016	22:45:00	USER					1 HT-400 PUMP TRUCK ( ELITE # 6 ) 2 660 BULK TRUCKS 1 TRANSPORT 1 SILO 1 F-550 PICKUP
Event	7	Comment	1/9/2016	23:00:00	USER					CUSTOMER WAS OFFERED SDS WATER TEMP @ 75 F PH: 7 CHLORIDES: 0
Event	8	Pre-Job Safety Meeting	1/10/2016	04:30:00	USER					ALL HES EMPLOYEES AND RIG CREW RIG DID NOT CIRCULATE ONLY FILL PIPE
Event	9	Start Job	1/10/2016	04:42:24	COM5					TD: 2550 TP: 2500 CSG: 9 5/8 36# J-55 SJ: 46.15 MUD WEIGHT: 9.1 PPG OH: 14 3/4
Event	10	Prime Lines	1/10/2016	04:44:19	COM5	8.33	2.0	50	2.0	PRIME LINES FRESH WATER
Event	11	Test Lines	1/10/2016	04:48:28	COM5	8.33		3413	2.0	PRESSURE TEST OK
Event	12	Fresh Water Spacer	1/10/2016	04:51:27	COM5	8.33	4.0	92	10.0	10 BBL FRESH WATER SPACER
Event	13	Super Flush 101	1/10/2016	04:54:10	COM5	10.0	4.0	124	20.0	20 BBL SUPER FLUSH 101
Event	14	Fresh Water Spacer	1/10/2016	04:59:22	COM5	8.33	4.0	40	10.0	10 BBL FRESH WATER SPACER
Event	15	Pump Lead Cement	1/10/2016	05:06:19	COM5	11.0	6.0	275	243.7	375 SKS VariCem GJ5( 243.7 BBLS ) 11.0 PPG 5.65 YIELD 23.08 GAL/SK LEAD CEMENT WEIGHT VERIFIED VIA

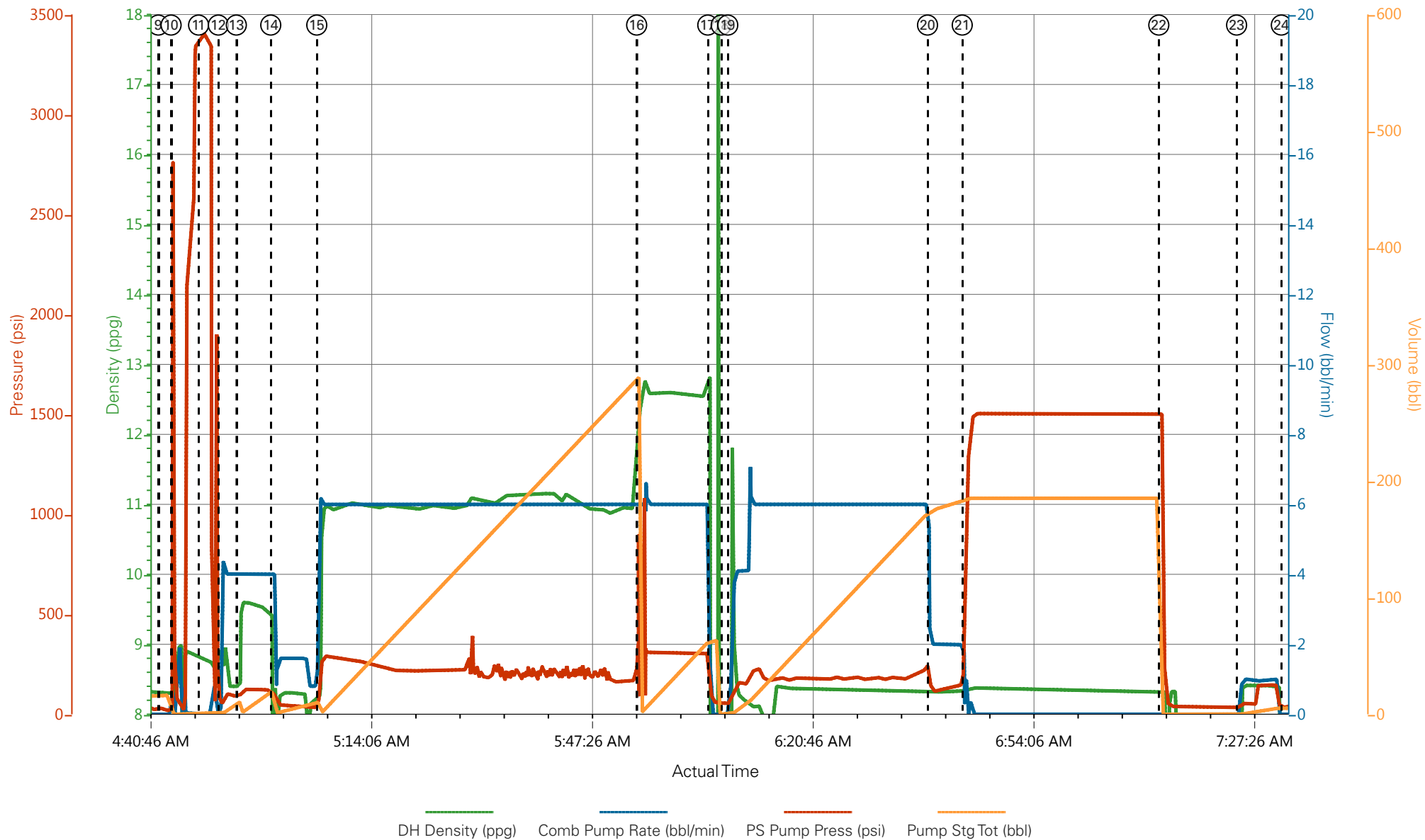
										PRESSURIZED MUD SCALES 90 LBS TUFF FIBER ADDED THROUGHOUT	
Event	16	Pump Tail Cement	1/10/2016	05:54:37	COM5	12.8	6.0	312	62.1	160 SKS VariCem GJ5 ( 62.1 BBLS ) 12.8 PPG 2.18 YIELD 12.11 GAL/SK TAIL CEMENT WEIGHT VERIFIED VIA PRESSURIZED MUD SCALES	
Event	17	Shutdown	1/10/2016	06:05:22	USER						
Event	18	Drop Top Plug	1/10/2016	06:07:23	COM5						PLUG AWAY NO PROBLEMS
Event	19	Pump Displacement	1/10/2016	06:08:23	COM5	8.4	6.0	245	189.6	FRESH WATER DISPLACEMENT	
Event	20	Slow Rate	1/10/2016	06:38:33	USER	8.4	2.0	130	179.6	SLOW RATE TO BUMP PLUG	
Event	21	Bump Plug	1/10/2016	06:43:47	COM5	8.4	2.0	160	189.6	PRESSURE PRIOR TO BUMPING PLUG @160 BUMPED PLUG UP TO 1504 PSI HELD FOR 30 MIN CASING TEST	
Event	22	Check Floats	1/10/2016	07:13:28	COM5	8.4			1504	189.6	FLOATS HOLDING 2 BBLS BACK TO TRUCKS TANKS
Event	23	Clean Parasite	1/10/2016	07:25:13	USER	8.4	1.0	145	10.0	CLEAN PARASITE 10 BBL SUGAR WATER	
Event	24	End Job	1/10/2016	07:31:59	USER						NO RETURNS THROUGHOUT JOB PIPE WAS STATIC THROUGHOUT JOB NO CEMENT TO SURFACE
Event	25	Start Job	1/10/2016	12:23:50	COM5						START TOP OUT JOB
Event	26	Prime Lines	1/10/2016	12:26:13	COM5	8.33	2.0	28	2.0	PRIME LINES FRESH WATER	
Event	27	Pump Cement	1/10/2016	12:34:13	COM5	12.8	3.0	145	79.0	209 SKS ( 79 BBLS ) 12.8 PPG 2.12 YIELD 11.15 GAL/SK TOPOUT CEMENT WEIGHT VERIFIED VIA PRESSURIZED MUD SCALES 5 BBLS SUPER FLUSH 101 ADDED	
Event	28	Shutdown	1/10/2016	12:58:46	USER						
Event	29	Clean Lines	1/10/2016	13:05:57	COM5	8.33	3.0	45	5.0	CLEAN LINES FRESH WATER	
Event	30	End Job	1/10/2016	13:12:28	USER						CEMENT CIRCULATED TO SURFACE 6 ADDITIONAL HOURS ADDED
Event	31	Pre-Rig Down Safety Meeting	1/10/2016	13:30:00	USER						ALL HES EMPLOYEES
Event	32	Rig-Down Equipment	1/10/2016	13:45:00	USER						
Event	33	Pre-Convoy Safety Meeting	1/10/2016	14:30:00	USER						ALL HES EMPLOYEES

Event    34    Crew Leave Location    1/10/2016    15:00:00    USER

---

THANK YOU FOR USING HALLIBURTON CEMENT DAVID  
CAMPBELL AND CREW

# CAERUS - PUCKETT 13D-1 - 9 5/8 SURFACE



- |   |                          |                      |                     |                   |
|---|--------------------------|----------------------|---------------------|-------------------|
| ① Call Out                              | ⑥ Rig-Up Equipment       | ⑪ Test Lines         | ⑯ Pump Tail Cement  | 21 Bump Plug      |
| ② Pre-Convoy Safety Meeting             | ⑦ Comment                | ⑫ Fresh Water Spacer | ⑰ Shutdown          | 22 Check Floats   |
| ③ Arrive At Loc                         | ⑧ Pre-Job Safety Meeting | ⑬ Super Flush 101    | ⑱ Drop Top Plug     | 23 Clean Parasite |
| ④ Assessment Of Location Safety Meeting | ⑨ Start Job              | ⑭ Fresh Water Spacer | ⑲ Pump Displacement | 24 End Job        |
| ⑤ Pre-Rig Up Safety Meeting             | ⑩ Prime Lines            | ⑮ Pump Lead Cement   | 20 Slow Rate        |                   |

▼ **HALLIBURTON** | iCem® Service

Created: 2016-01-09 17:15:09, Version: 4.2.393

Edit

Customer : CAERUS OIL AND GAS LLC - EBUS

Job Date : 1/10/2016

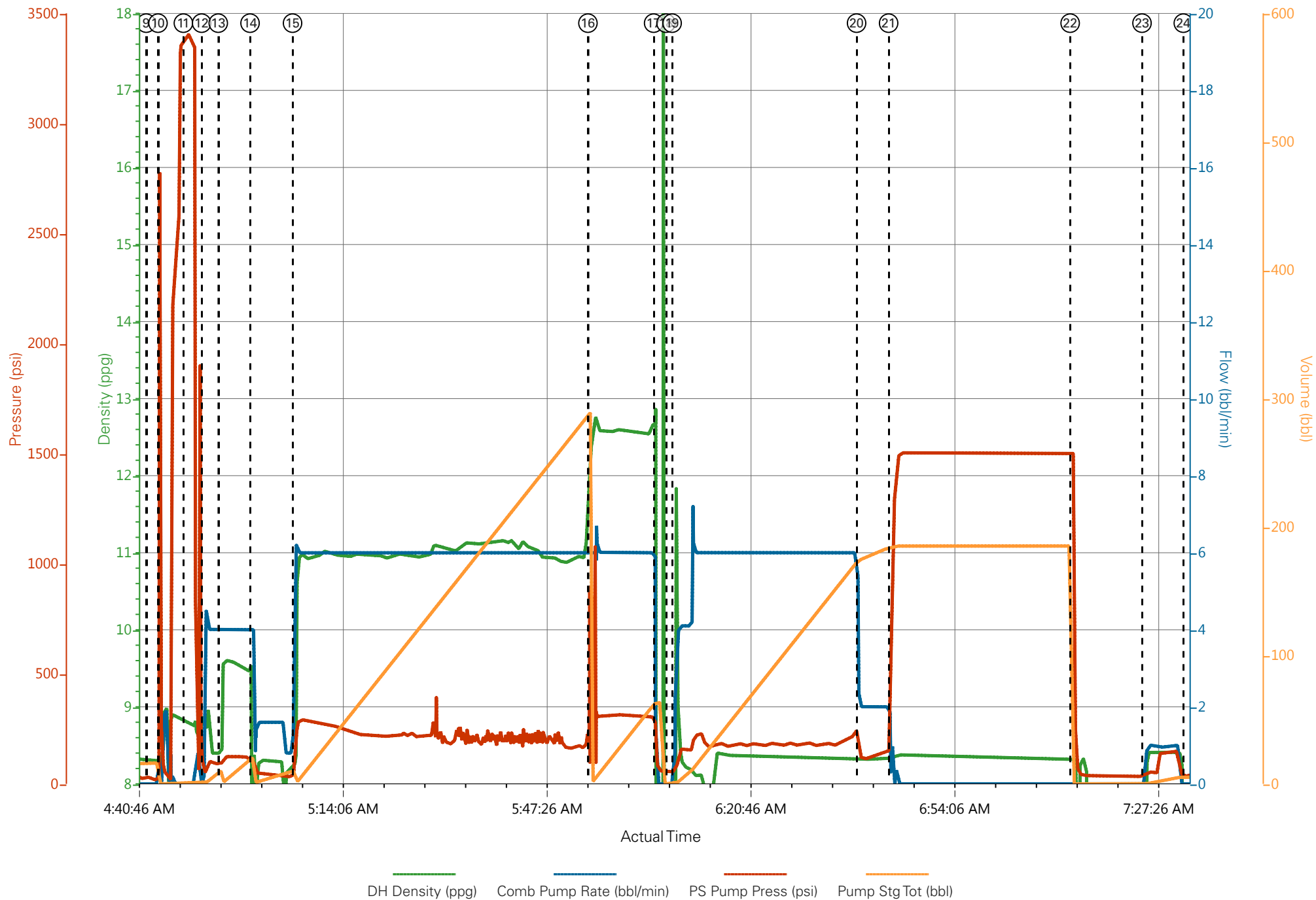
Well : PUCKETT 13D-1

Representative : WHITEY COTTAM

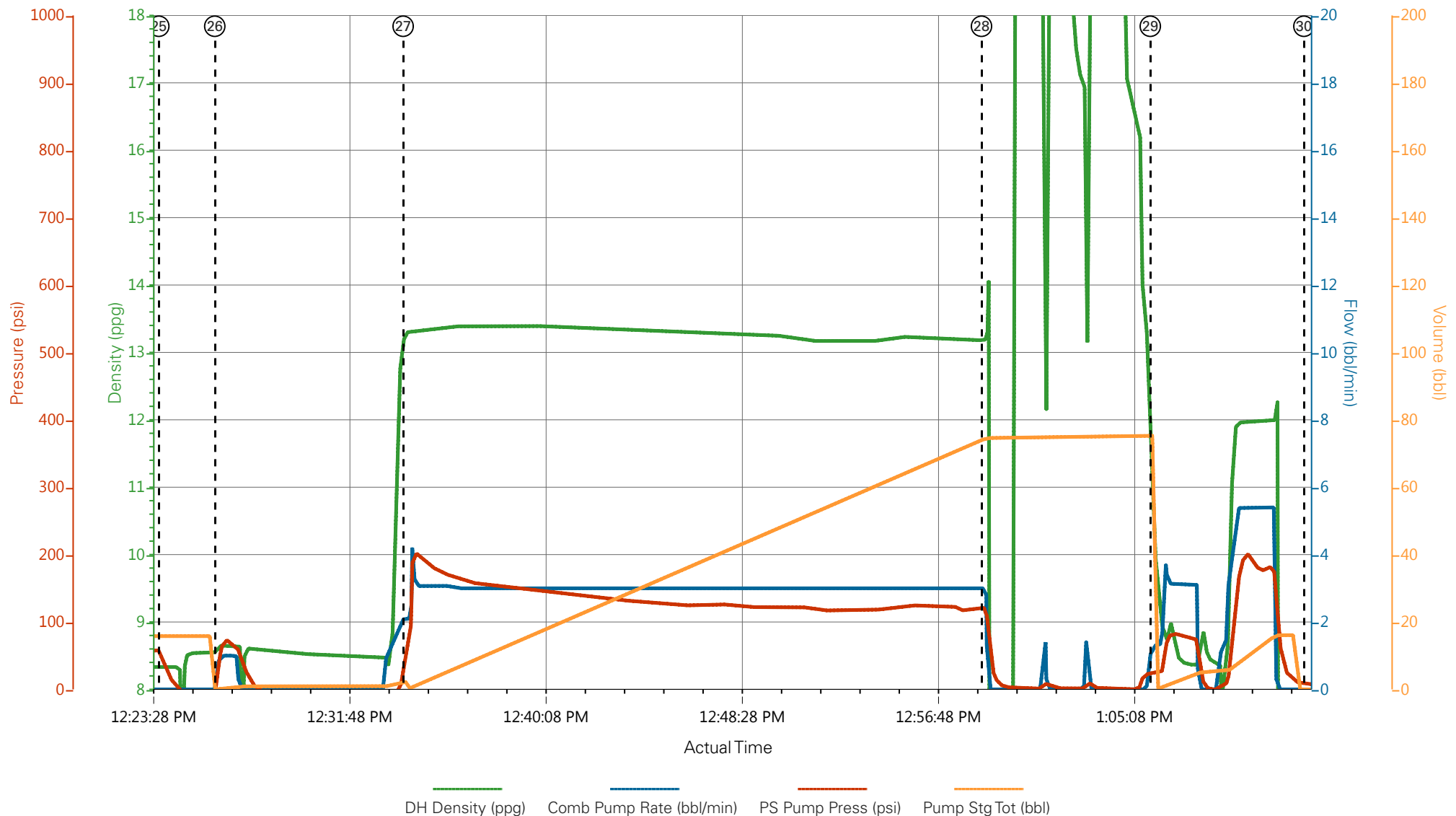
Sales Order # : 0903039744

ELITE # 6 : DAVID CAMPBELL / RYAN MARTIN

# CAERUS - PUCKETT 13D-1 - 9 5/8 SURFACE



# CAERUS - PUCKETT 13D-1 - TOP OUT



- |   |                          |                      |                     |                |                                |
|---|--------------------------|----------------------|---------------------|----------------|--------------------------------|
| ① Call Out                              | ⑦ Comment                | ⑬ Super Flush 101    | ⑲ Pump Displacement | 25 Start Job   | 31 Pre-Rig Down Safety Meeting |
| ② Pre-Convoy Safety Meeting             | ⑧ Pre-Job Safety Meeting | ⑭ Fresh Water Spacer | 20 Slow Rate        | 26 Prime Lines | 32 Rig-Down Equipment          |
| ③ Arrive At Loc                         | ⑨ Start Job              | ⑮ Pump Lead Cement   | 21 Bump Plug        | 27 Pump Cement | 33 Pre-Convoy Safety Meeting   |
| ④ Assessment Of Location Safety Meeting | ⑩ Prime Lines            | ⑯ Pump Tail Cement   | 22 Check Floats     | 28 Shutdown    | 34 Crew Leave Location         |
| ⑤ Pre-Rig Up Safety Meeting             | ⑪ Test Lines             | ⑰ Shutdown           | 23 Clean Parasite   | 29 Clean Lines |                                |
| ⑥ Rig-Up Equipment                      | ⑫ Fresh Water Spacer     | ⑱ Drop Top Plug      | 24 End Job          | 30 End Job     |                                |

# CAERUS - PUCKETT 13D-1 - TOP OUT

