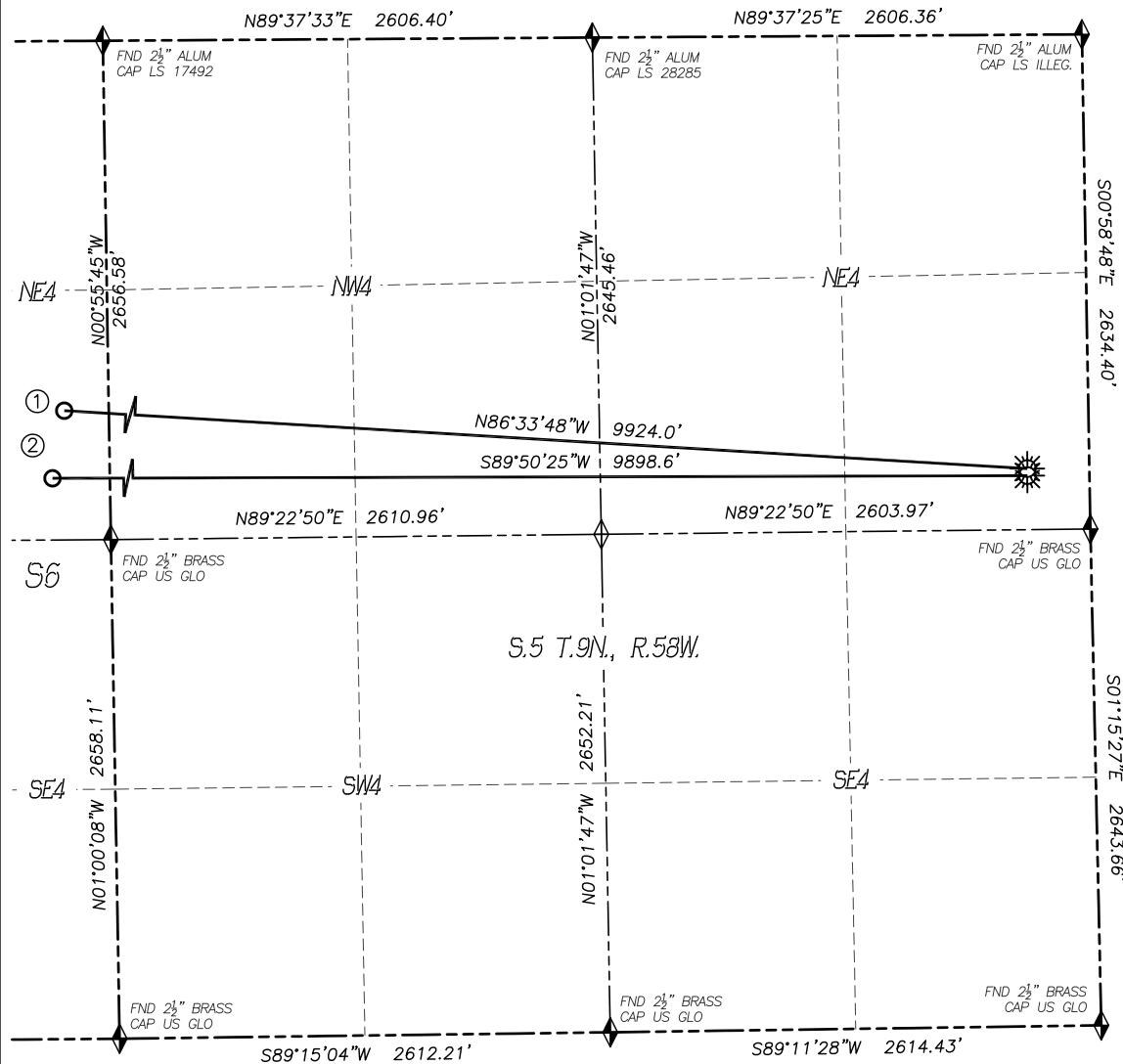


# MULTI-WELL PLAN LD05-08 WELL PAD

SECTION: 5  
TOWNSHIP: 9N  
RANGE: 58W  
SE4/NE4



0 500 1000  
SCALE: 1" = 1000'

## LEGEND

- ◆ FOUND MONUMENT
- ◆ CALCULATED POSITION
- ☀ PROPOSED WELL
- BOTTOM HOLE
- ABANDONED WELL
- EXISTING WELL

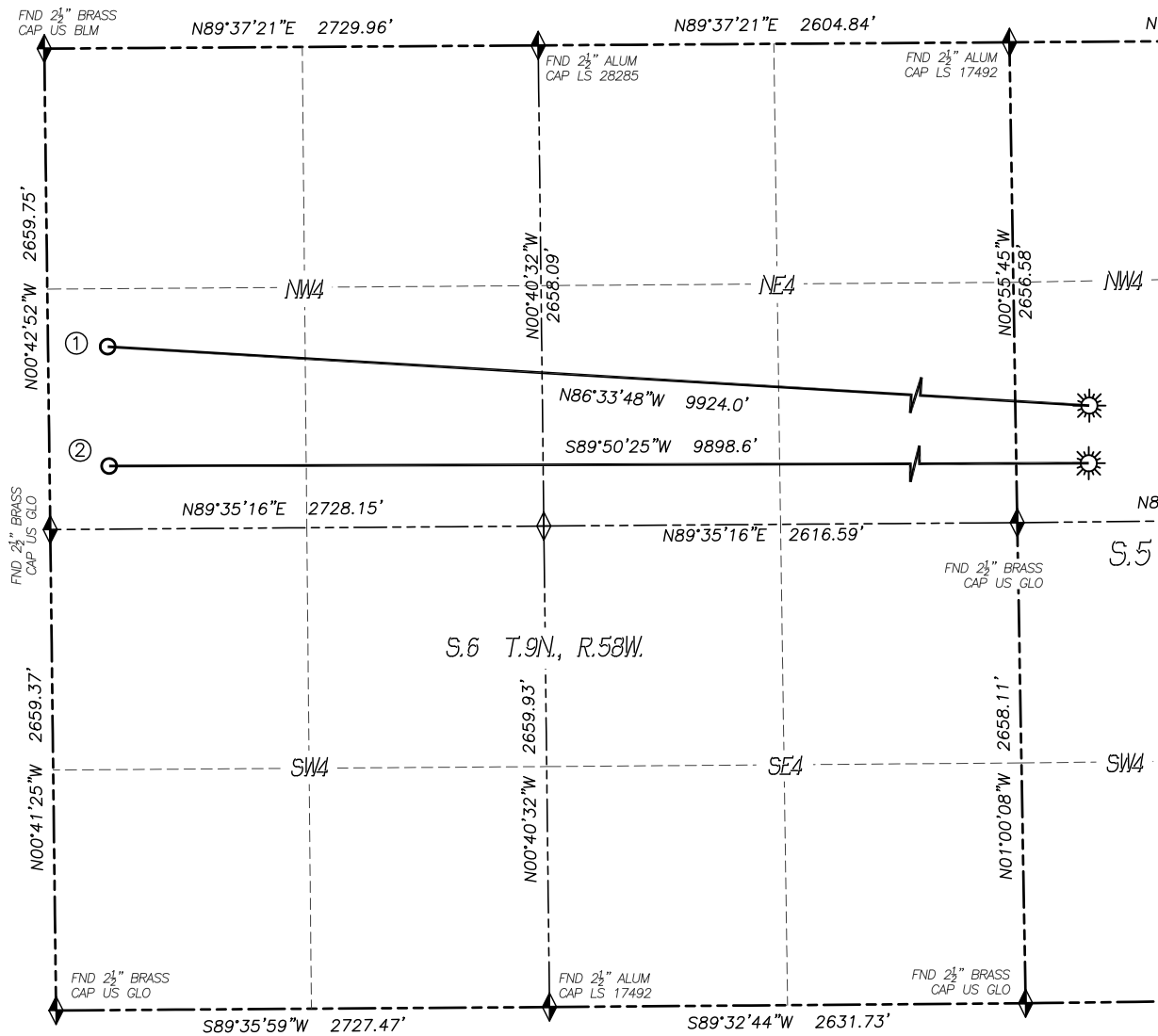
## BOTTOM HOLE DATA

|   | Well Name       | Footage   |          | Latitude  | Longitude   | Qtr/Qtr            |
|---|-----------------|-----------|----------|-----------|-------------|--------------------|
| 1 | Nugent LD06-665 | 1650' FNL | 330' FWL | 40.78300° | -103.91608° | SW NW, Gov't Lot 5 |
| 3 | Nugent LD06-655 | 2310' FNL | 330' FWL | 40.78119° | -103.91606° | SW NW, Gov't Lot 5 |

# MULTI-WELL PLAN

## LD05-08 WELL PAD

SECTION: 5  
TOWNSHIP: 9N  
RANGE: 58W  
SE4/NE4

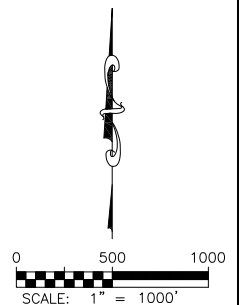


### BOTTOM HOLE DATA

|   | Well Name       | Footage   |          | Latitude  | Longitude   | Qtr/Qtr            |
|---|-----------------|-----------|----------|-----------|-------------|--------------------|
| 1 | Nugent LD06-665 | 1650' FNL | 330' FWL | 40.78300° | -103.91608° | SW NW, Gov't Lot 5 |
| 3 | Nugent LD06-655 | 2310' FNL | 330' FWL | 40.78119° | -103.91606° | SW NW, Gov't Lot 5 |

### LEGEND

- FOUND MONUMENT
- CALCULATED POSITION
- PROPOSED WELL
- BOTTOM HOLE
- ABANDONED WELL
- EXISTING WELL



**MULTI-WELL PLAN  
LD05-08 WELL PAD**

SECTION: 5  
TOWNSHIP: 9N  
RANGE: 58W  
SE4/NE4



0 200  
SCALE: 1" = 200'