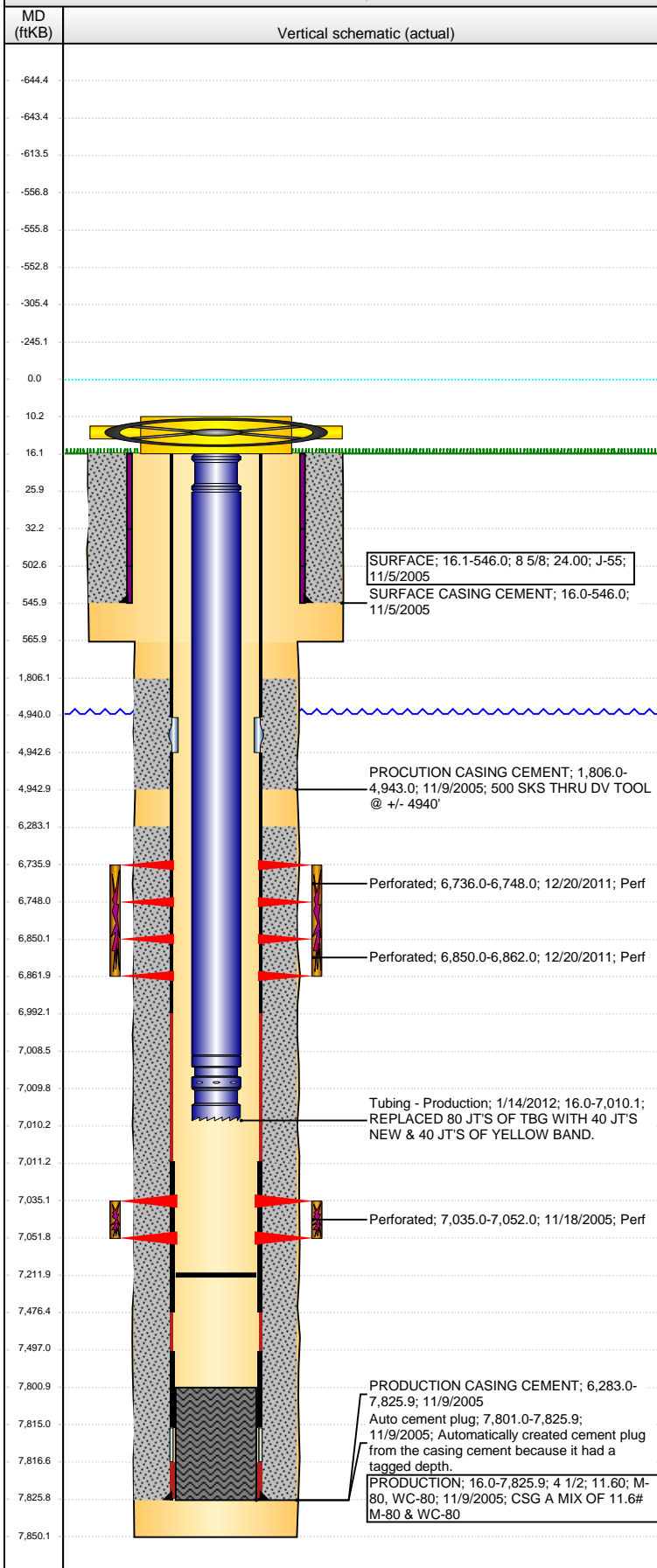


Well Name: STATE M36-01

VERTICAL - ORIGINAL HOLE, 4/5/2016 9:42:37 AM



Well Header

API	Business Unit	District	Well Config
05-123-23205	DJ BASIN	15	VERTICAL
Original KB Elevation (ft)	KB - GL / MSL (ftKB)	Spud Date	P & A Date
4,734	16.00	11/4/2005	

Comment

STATE LEASE; DV TOOL @ 4940'

Directions To Well

CR 25 & CR 62 NORTH 6/10 ROAD WINDS AROUND & DOWN HILL S/W THROUGH GREEN GATE 1/10 WEST INTO

Congressional Location

Quarter 1	Quarter 2	Quarter 3	Quarter 4	Section	Township	Twnshp N...	Range	Rng E/W Dir
		NE	NE	36	6	N	67	W

Bottom Hole Location

North-South Distance (ft)	From N or S Line	East-West Distance (ft)	From E or W Line

Plug Back Total Depths

Date	Depth (ftKB)	Method	Com
11/9/2005	7,815.0	CASING TALLY	FLOAT COLLAR
11/18/2005	7,801.0	CASED HOLE LOG	DEPTH LOGGER ON CBL
12/6/2011	7,335.9	TAG	DID NOT TAG FILL THATS 283.93' OF RAT HOLE
1/13/2012	7,212.0	TAG	PUSHED PLUG WITH CONE BIT TO THERE. PLU...

Wellbore Sections

Section Des	Size (in)	Act Top, MD (ftKB)	Act Btm, MD (ftKB)
SURFACE	12 1/4	16.0	566.0
PRODUCTION	7 7/8	566.0	7,850.0

Zone Statuses

Zone Name	Status Date	Status	Fluid Type	Job	Prod Method
CODELL	2/21/2006	PR		COMPLETION...	
CODELL	1/15/2010	PR	Water		Flowing
CODELL	12/21/2011	PR		RE-FRAC & R...	
NIOBRARA	1/15/2010	PR	Water		Flowing
NIOBRARA	12/21/2011	PR		RE-FRAC & R...	
NIOBRARA	5/1/2015	PR			

Casing Strings

SURFACE, 546.0ftKB

Casing Description	Run Date	OD (in)	Wt/Len (l...)	Grade	Top, MD (ft...)	MD (ftKB)
SURFACE	11/5/2005	8 5/8	24.00	J-55	16.1	546.0

PRODUCTION, 7,825.9ftKB

Casing Description	Run Date	OD (in)	Wt/Len (l...)	Grade	Top, MD (ft...)	MD (ftKB)
PRODUCTION	11/9/2005	4 1/2	11.60	WC-80	16.0	7,825.9

Cement

Description	Top Depth (ftKB)	Bottom Depth (ftKB)
SURFACE CASING CEMENT	16.0	546.0
PRODUCTION CASING CEMENT	1,806.0	4,943.0
PRODUCTION CASING CEMENT	6,283.0	7,825.9

Tubing Strings

Tubing Description	Run Date	String...	ID (in)	Wt (lb/ft)	Grade	Len (ft)	Set De...
Tubing - Frac string	11/16/2005	2 3/8	1.995	4.70	J-55	7,005.00	
Tubing - Production	1/14/2012	2 3/8	1.995	4.70	J-55	6,994.12	

Tubing Components

Item Des	OD (in)	Wt (lb/ft)	Grade	Jts	Len (ft)	Btm (ftKB)	Btm (TVD) (ftKB)
Pup Joint	2 3/8	4.70	J-55	1	10.00	26.0	
EUE 8rd Tubing	2 3/8	4.70	J-55	216	6,982.62	7,008.6	
Seal Nipple	2 3/8	4.70	N-80	1	1.20	7,009.8	
Notched collar	2 3/8	4.70	J-55	1	0.30	7,010.1	

Perforation Data

Zone	Bnch/St g	Entered Shot Total	Top (ftKB)	Btm (ftKB)	Date
NIOBRARA, ORIGINAL HOLE	A	24	6,736.00	6,748.00	12/20/2011
NIOBRARA, ORIGINAL HOLE	B	24	6,850.00	6,862.00	12/20/2011
CODELL, ORIGINAL HOLE		68	7,035.00	7,052.00	11/18/2005

Well Name: STATE M36-01

VERTICAL - ORIGINAL HOLE, 4/5/2016 9:42:39 AM

Stimulations & Treatments

Date	Zone	Primary Job Type
1/16/2006	CODELL, ORIGINAL HOLE	COMPLETION - ORIGINAL
Technical Result	Tech Result Details	Tech Result Note

Comment
DEADSTRING FRAC

Date	Zone	Primary Job Type
12/20/2011	CODELL, ORIGINAL HOLE	RE-FRAC & RECOMPLETE
Technical Result	Tech Result Details	Tech Result Note

Success
According to Plan

Comment
(CODELL) - BREAK 2593 @ 2.9, ISIP 2823, 5 MIN 1173. AVER VISC 26.3, AVER PH 10.23, AVER TEMP 72.69. SHUTDOWN DURING PAD TO REPLACE VALVE FOR VISC LOOP. LOST N2 FOR POP OFF ON PAD. LOST HYDRAULICS ON SAND MASTER AT THE END OF PAD, SHUT DOWN FOR 45 MIN BEFORE CONTINUING.

Date	Zone	Primary Job Type
12/20/2011	NIOBRARA, ORIGINAL HOLE	RE-FRAC & RECOMPLETE
Technical Result	Tech Result Details	Tech Result Note

Success
According to Plan

Comment
(NIOBRARA)- BREAK 3442 @ 1.4, ISIP 3528, AVER VISC 16.7, AVER PH 10.35, AVER TEMP 69. SAND STARTED EARLY AT BLENDER. STINGER SWEDGE CUT OUT AT WELLHEAD DURING 3#, FLUSHED WELL SHUTDOWN. FOUND LEAK CHANGED OUT SWEDGE. PRESSURE TESTED LINE, THEN CONTINUED JOB.

Other In Hole

Run Date	Des	OD (in)	Top (ftKB)	Btm (ftKB)

Logs

Date	Type	Top, MD (ftKB)	Btm, MD (ftKB)
11/9/2005	COMPENSATED DENSITY	546.0	7,839.0
11/9/2005	INDUCTION	546.0	7,839.0
11/18/2005	CBL/CCL/GR	546.0	7,839.0

