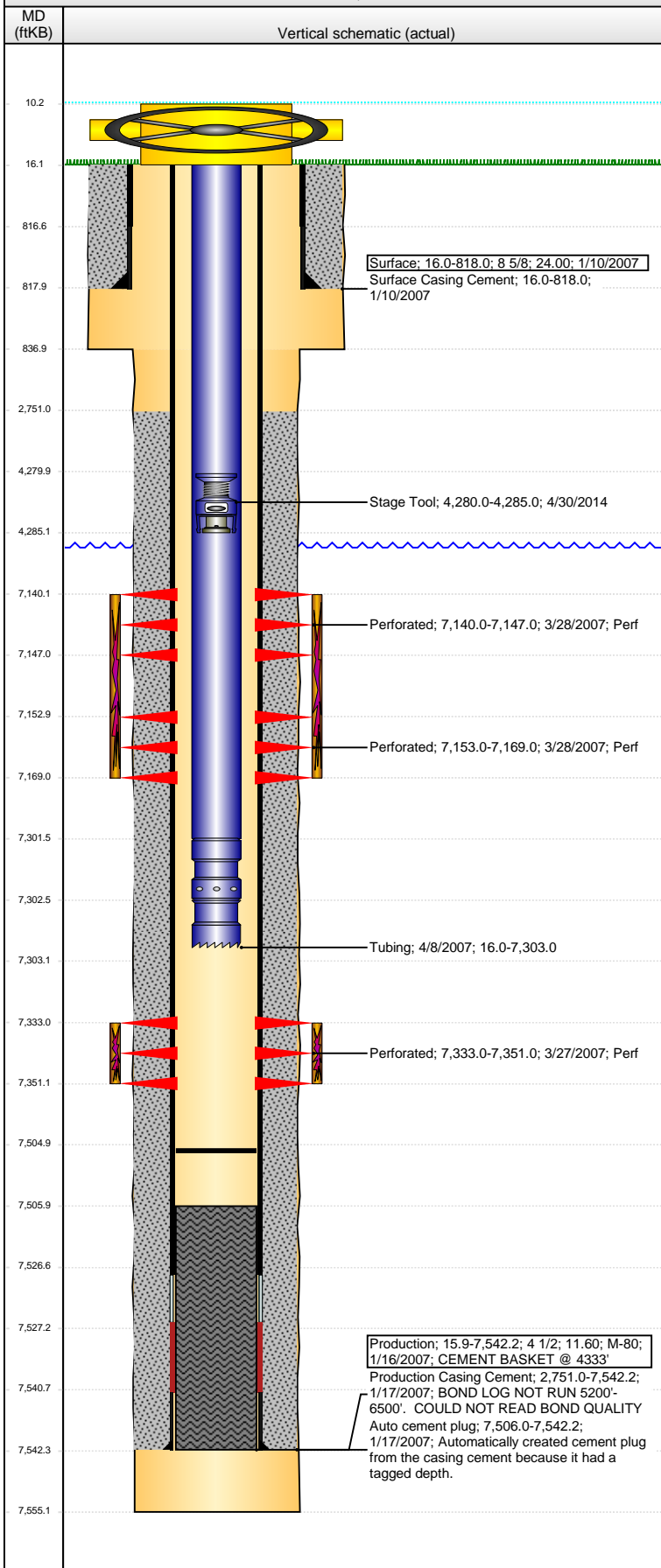


**Well Name:** LIND 36-32

VERTICAL - ORIGINAL HOLE, 3/16/2016 10:00:03 AM



## Well Header

API	Business Unit	District	Well Config
05-123-29976	DJ BASIN	15	VERTICAL
Original KB Elevation (ft)	KB - GL / MSL (ftKB)	Spud Date	P & A Date
4,933	16.00	1/9/2007	

Comment  
VERY LITTLE TUBING DETAILS FOUND IN WELL FILE. CBL NOT RUN 5200'-6500'. COULD NOT READ BOND QUALITY

## Directions To Well

## Congressional Location

Quarter 1	Quarter 2	Quarter 3	Quarter 4	Section	Township	Twnshp N...	Range	Rng E/W Dir
	NE	NW	SW	36	7	N	67	W

## Bottom Hole Location

North-South Distance (ft)	From N or S Line	East-West Distance (ft)	From E or W Line

## Plug Back Total Depths

Date	Depth (ftKB)	Method	Com
1/16/2007	7,526.7	CASING TALLY	TOP OF LATCH DOWN BAFFLE
3/26/2007	7,506.0	CASED HOLE LOG	DEPTH LOGGER ON CBL
4/8/2007	7,505.0	TAG	MOST RECENT CLEAN OUT

## Wellbore Sections

Section Des	Size (in)	Act Top, MD (ftKB)	Act Btm, MD (ftKB)
SURFACE	12 1/4	16.0	837.0
PRODUCTION	7 7/8	837.0	7,555.0

## Zone Statuses

Zone Name	Status Date	Status	Fluid Type	Job	Prod Method
NIOBRARA	9/17/2007	PR		DRILLING/CO...	
CODELL	9/17/2007	PR		DRILLING/CO...	

## Casing Strings

### Surface, 818.0ftKB

Casing Description	Run Date	OD (in)	Wt/Len (l...)	Grade	Top, MD (ft...)	MD (ftKB)
Surface	1/10/2007	8 5/8	24.00		16.0	818.0

### Production, 7,542.3ftKB

Casing Description	Run Date	OD (in)	Wt/Len (l...)	Grade	Top, MD (ft...)	MD (ftKB)
Production	1/16/2007	4 1/2	11.60	M-80	16.0	7,542.3

## Cement

Description	Top Depth (ftKB)	Bottom Depth (ftKB)
Surface Casing Cement	16.0	818.0

Description	Top Depth (ftKB)	Bottom Depth (ftKB)
Production Casing Cement	2,751.0	7,542.3

## Tubing Strings

Tubing Description	Run Date	String...	ID (in)	Wt (lb/ft)	Grade	Len (ft)	Set De...
Tubing	4/8/2007	2 3/8				7,287.00	

## Tubing Components

Item Des	OD (in)	Wt (lb/ft)	Grade	Jts	Len (ft)	Btm (ftKB)	Btm (TVD) (ftKB)
Tubing	2 3/8			219	7,285.50	7,301.5	
Pump Seating Nipple	2 3/8	1.10			1.00	7,302.5	
Notched collar	2 3/8				0.50	7,303.0	

## Perforation Data

Zone	Bnch/St g	Entered Shot Total	Top (ftKB)	Btm (ftKB)	Date
NIOBRARA, ORIGINAL HOLE	B	28	7,140.00	7,147.00	3/28/2007
NIOBRARA, ORIGINAL HOLE	B	64	7,153.00	7,169.00	3/28/2007
CODELL, ORIGINAL HOLE		72	7,333.00	7,351.00	3/27/2007

## Stimulations & Treatments

Date	Zone	Primary Job Type
3/28/2007	CODELL, ORIGINAL HOLE	DRILLING/COMPLETION - ORIGINAL

Technical Result	Tech Result Details	Tech Result Note

## Comment

Date	Zone	Primary Job Type
3/28/2007	NIOBRARA, ORIGINAL HOLE	DRILLING/COMPLETION - ORIGINAL

Technical Result	Tech Result Details	Tech Result Note

## Comment

**Well Name: LIND 36-32**

VERTICAL - ORIGINAL HOLE, 3/16/2016 10:00:06 AM

## Other In Hole

Run Date	Des	OD (in)	Top (ftKB)	Btm (ftKB)
4/30/2014	Stage Tool	2	4,280.0	4,285.0

## Logs

Date	Type	Top, MD (ftKB)	Btm, MD (ftKB)
1/15/2007	COMPENSATED DENSITY	3,590.0	7,523.0
1/15/2007	INDUCTION	818.0	7,543.0
3/26/2007	CBL/CCL/GR	2,600.0	7,504.0

