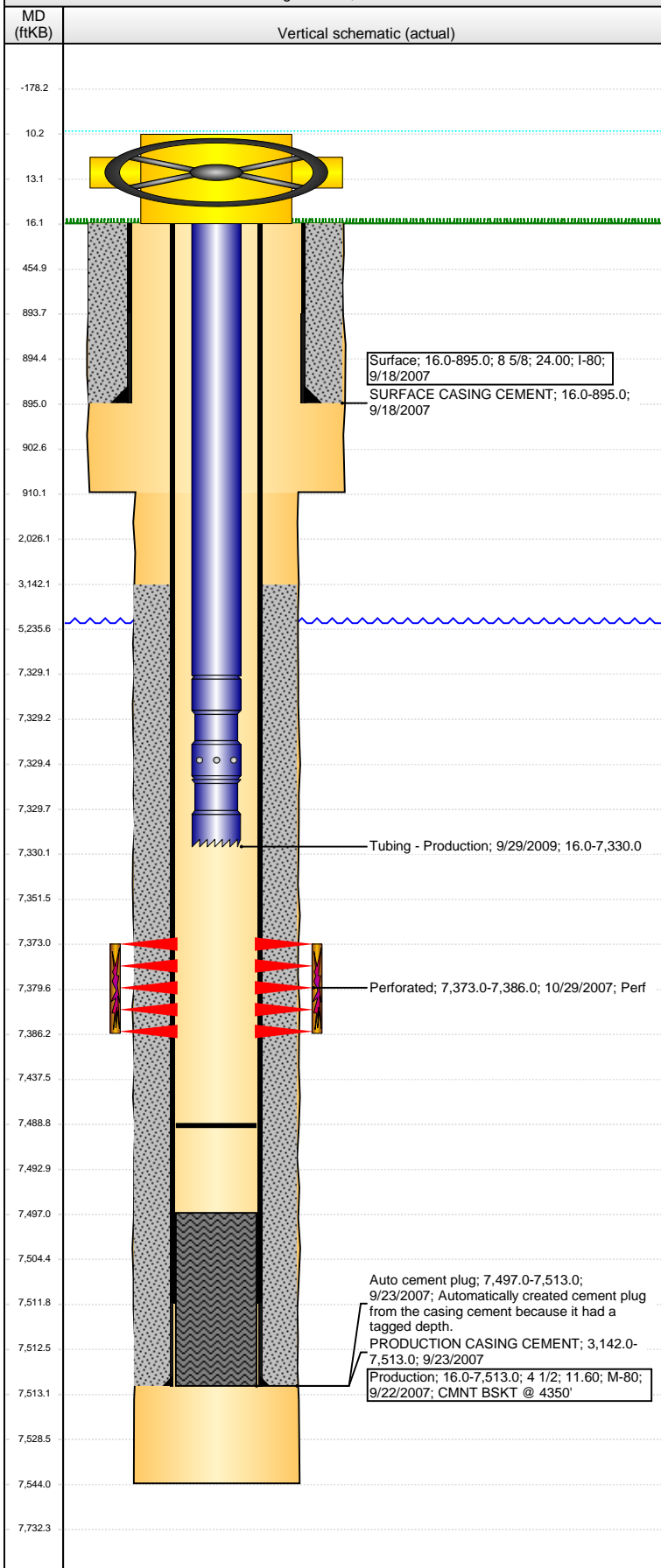


Wellbore Schematic Input Report

Well Name: WADSWORTH 36-13

VERTICAL - Original Hole, 4/5/2016 1:21:40 PM



Well Header

API 05-123-25222	Business Unit DJ BASIN	District 15	Well Config VERTICAL
Original KB Elevation (ft) 4,932	KB - GL / MSL (ftKB) 16.00	Spud Date 9/17/2007	P & A Date
Comment This well is hand cycled once a month just to show production. The pumper may have forgotten to show the well as cycled over the last couple months. Aaron Luders 5/2/11. FRAC'D INTO 1/2011. Directions To Well			

Congressional Location

Quarter 1	Quarter 2	Quarter 3	Quarter 4	Section	Township	Twnshp N...	Range	Rng E/W Dir
		SW	NE	36	7	N	67	W

Bottom Hole Location

North-South Distance (ft)	From N or S Line	East-West Distance (ft)	From E or W Line

Plug Back Total Depths

Date	Depth (ftKB)	Method	Com
9/23/2007	7,457.0	CASED HOLE LOG	DEPTH LOGGER ON CBL
9/23/2007	7,497.0	CASING TALLY	LANDING JOINT
9/29/2009	7,489.0	TAG	C/O & LAND TBG

Wellbore Sections

Section Des	Size (in)	Act Top, MD (ftKB)	Act Btm, MD (ftKB)
SURFACE	12 1/4	16.0	910.0
PRODUCTION	7 7/8	910.0	7,544.0

Zone Statuses

Zone Name	Status Date	Status	Fluid Type	Job	Prod Method
CODELL	11/7/2007	PR		DRILLING/CO...	

Casing Strings

Surface, 895.0ftKB

Casing Description	Run Date	OD (in)	Wt/Len (l...)	Grade	Top, MD (ft...)	MD (ftKB)
Surface	9/18/2007	8 5/8	24.00	I-80	16.0	895.0

Production, 7,513.0ftKB

Casing Description	Run Date	OD (in)	Wt/Len (l...)	Grade	Top, MD (ft...)	MD (ftKB)
Production	9/22/2007	4 1/2	11.60	M-80	16.0	7,513.0

Cement

Description	Top Depth (ftKB)	Bottom Depth (ftKB)
SURFACE CASING CEMENT	16.0	895.0
Description	Top Depth (ftKB)	Bottom Depth (ftKB)
PRODUCTION CASING CEMENT	3,142.0	7,513.0

Tubing Strings

Tubing Description	Run Date	String...	ID (in)	Wt (lb/ft)	Grade	Len (ft)	Set De...
Tubing - Production	9/29/2009	2 3/8		4.70	?	7,314.00	

Tubing Components

Item Des	OD (in)	Wt (lb/ft)	Grade	Jts	Len (ft)	Btm (ftKB)	Btm (TVD) (ftKB)
Tubing	2 3/8	4.70	?	237	7,313.00	7,329.0	
Seal Nipple	2 3/8				0.50	7,329.5	
Notched collar	2 3/8				0.50	7,330.0	

Perforation Data

Zone	Bnch/St g	Entered Shot Total	Top (ftKB)	Btm (ftKB)	Date
CODELL, Original Hole		52	7,373.00	7,386.00	10/29/2007

Stimulations & Treatments

Date	Zone	Primary Job Type
10/30/2007	CODELL, Original Hole	DRILLING/COMPLETION - ORIGINAL
Technical Result	Tech Result Details	Tech Result Note
Failure	Screen-Out	

Comment
SCREENED OUT W/ 8 BBLS LEFT IN FLUSH

Other In Hole

Run Date	Des	OD (in)	Top (ftKB)	Btm (ftKB)

Logs

Date	Type	Top, MD (ftKB)	Btm, MD (ftKB)
9/23/2007	CBL/CCL/GR	3,100.0	7,455.0
9/23/2007	COMPENSATED DENSITY	3,640.0	7,524.0

Well Name: WADSWORTH 36-13

VERTICAL - Original Hole, 4/5/2016 1:21:42 PM

Logs

