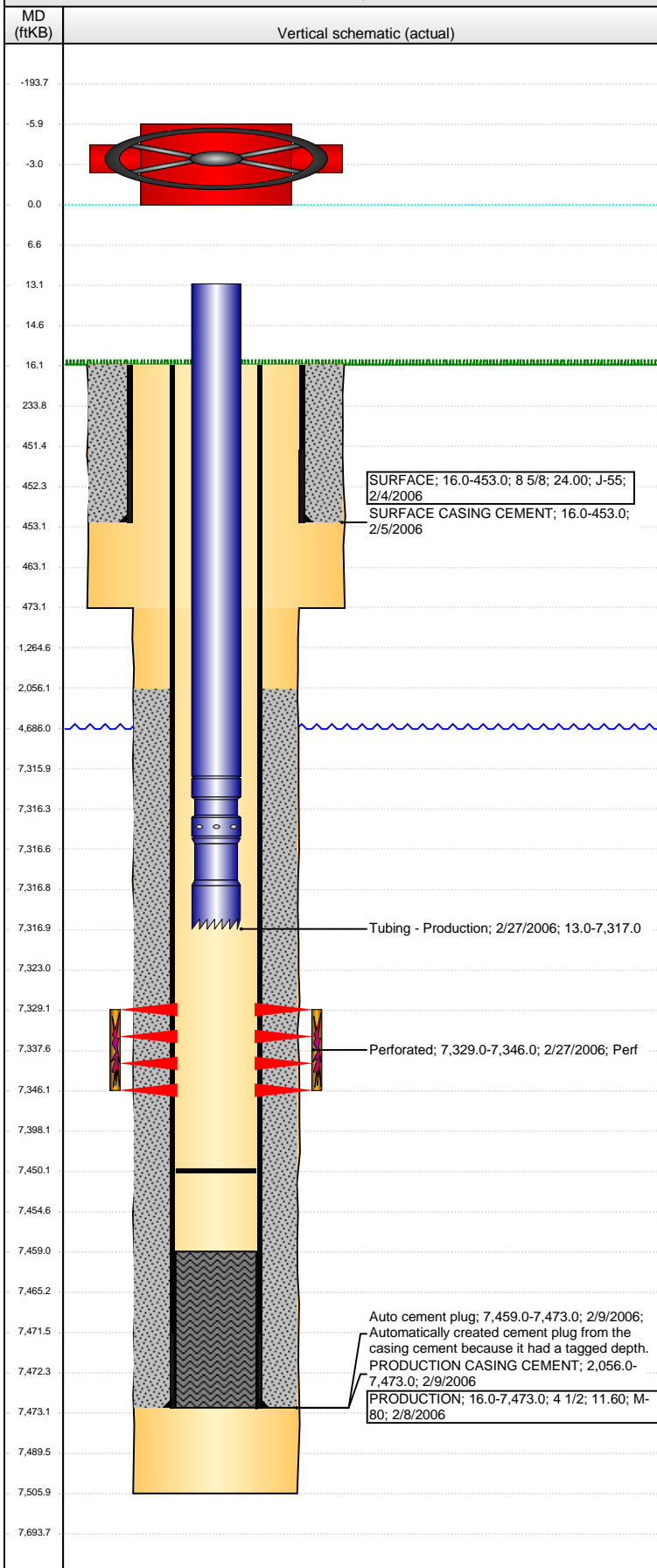


Well Name: MONFORT E30-16

DEVIATED - ORIGINAL HOLE, 4/1/2016 12:48:21 PM



Well Header

API	Business Unit	District	Well Config
05-123-23553	DJ BASIN	15	DEVIATED
Original KB Elevation (ft)	KB - GL / MSL (ftKB)	Spud Date	P & A Date
4,724	16.00	2/4/2006	
Comment			

Directions To Well

"O St" & 11 AVE, N .5, W .2 INTO PAD SITE

Congressional Location

Quarter 1	Quarter 2	Quarter 3	Quarter 4	Section	Township	Twnshp N...	Range	Rng E/W Dir
		NE	SE	30	6	N	65	W

Bottom Hole Location

North-South Distance (ft)	From N or S Line	East-West Distance (ft)	From E or W Line
600.0	FSL	560.0	FEL

Plug Back Total Depths

Date	Depth (ftKB)	Method	Com
2/9/2006	7,459.0	CASING TALLY	FLOAT COLLAR
2/20/2006	7,450.0	CASED HOLE LOG	DEPTH LOGGER

Wellbore Sections

Section Des	Size (in)	Act Top, MD (ftKB)	Act Btm, MD (ftKB)
SURFACE	12 1/4	16.0	473.0
PRODUCTION	7 7/8	473.0	7,506.0

Zone Statuses

Zone Name	Status Date	Status	Fluid Type	Job	Prod Method
CODELL	3/16/2006	PR	Oil	DRILLING/CO...	
NIOBRARA	6/2/2009		Water		
NIOBRARA	12/7/2015				

Casing Strings

SURFACE, 453.0ftKB

Casing Description	Run Date	OD (in)	Wt/Len (l...	Grade	Top, MD (ft...	MD (ftKB)
SURFACE	2/4/2006	8 5/8	24.00	J-55	16.0	453.0

PRODUCTION, 7,473.0ftKB

Casing Description	Run Date	OD (in)	Wt/Len (l...	Grade	Top, MD (ft...	MD (ftKB)
PRODUCTION	2/8/2006	4 1/2	11.60	M-80	16.0	7,473.0

Cement

Description	Top Depth (ftKB)	Bottom Depth (ftKB)
SURFACE CASING CEMENT	16.0	453.0
Description	Top Depth (ftKB)	Bottom Depth (ftKB)
PRODUCTION CASING CEMENT	2,056.0	7,473.0

Tubing Strings

Tubing Description	Run Date	String...	ID (in)	Wt (lb/ft)	Grade	Len (ft)	Set De...
Tubing - Production	2/27/2006	2 3/8	1.995	4.70	J-55	7,304.00	

Tubing Components

Item Des	OD (in)	Wt (lb/ft)	Grade	Jts	Len (ft)	Btm (ftKB)	Btm (TVD) (ftKB)
Tubing	2 3/8	4.70	J-55	221	7,303.00	7,316.0	
Pump Seating Nipple	2 3/8			1	0.50	7,316.5	
Notched collar	2 3/8			1	0.50	7,317.0	

Perforation Data

Zone	Bnch/St g	Entered Shot Total	Top (ftKB)	Btm (ftKB)	Date
CODELL, ORIGINAL HOLE		68	7,329.00	7,346.00	2/27/2006

Stimulations & Treatments

Date	Zone	Primary Job Type
3/14/2006	CODELL, ORIGINAL HOLE	DRILLING/COMPLETION - ORIGINAL
Technical Result		Tech Result Note

Comment

Other In Hole

Run Date	Des	OD (in)	Top (ftKB)	Btm (ftKB)

Logs

Date	Type	Top, MD (ftKB)	Btm, MD (ftKB)
2/8/2006	COMPENSATED DENSITY	2,100.0	7,478.0
2/8/2006	INDUCTION	453.0	7,498.0

Well Name: MONFORT E30-16

DEVIATED - ORIGINAL HOLE, 4/1/2016 12:48:23 PM

Logs

