

NOBLE ENERGY INC.

Bickling #3-42

NWSE 3-6N-65W

1984 FSL & 1984 FEL

WELD COUNTY, CO

Wattenberg

CURRENT WELLBORE SCHEMATIC W/ PROPOSED P&A

4/1/2016

API: 05-123-18622
COGCC #

Spud Date: 10/31/1994

GL Elev: 4803
KB Elev: 4814

Surface Casing :

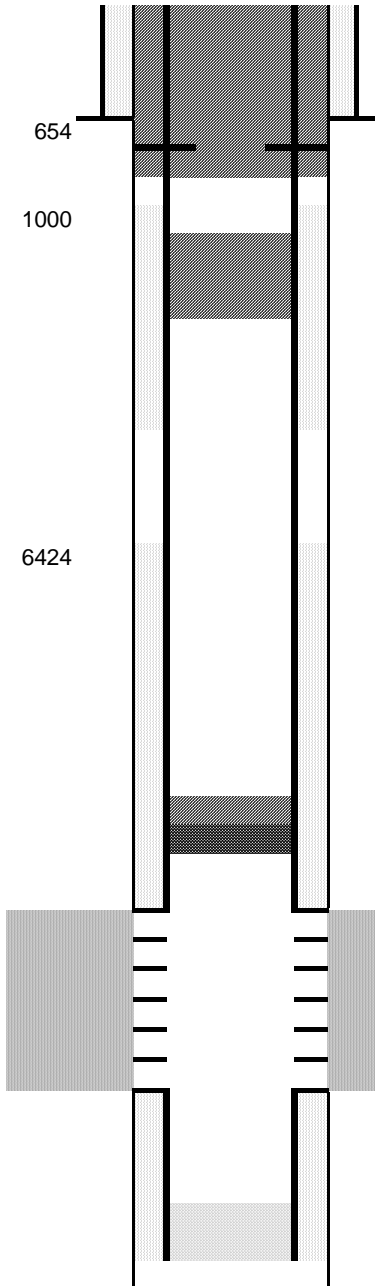
8.625" 24# J-55 SET AT 445'
Cement: 310 sx
TOC: Surface

Deepest water = 420' + 150' = 570'
No Sussex Production within a mile
Fox Hills = 504' + 150' = 654'

TOC @ 6424 & 1000'
Nio top @ 6820'
Codell top @ 7108'

Production Casing :

3.5" 7.7# N-80 SET AT 7265'
Cement: 180 sx
TD: 11/5/1994



Cut surface casing off 6'-8' below surface.
Perforate at 654'
Pump approx 300 sx shoe plug at 654'
270x outside and 30 sx inside
Will bring cement to surface.

Pump a courtesy plug at 2500' w/ 15 sx

Set CIBP @ 6910 w/ 2 sx cement

NIOBARRA Perforations 6960' - 6977'

CODELL Perforations 7112' - 7123'

TD: 7265