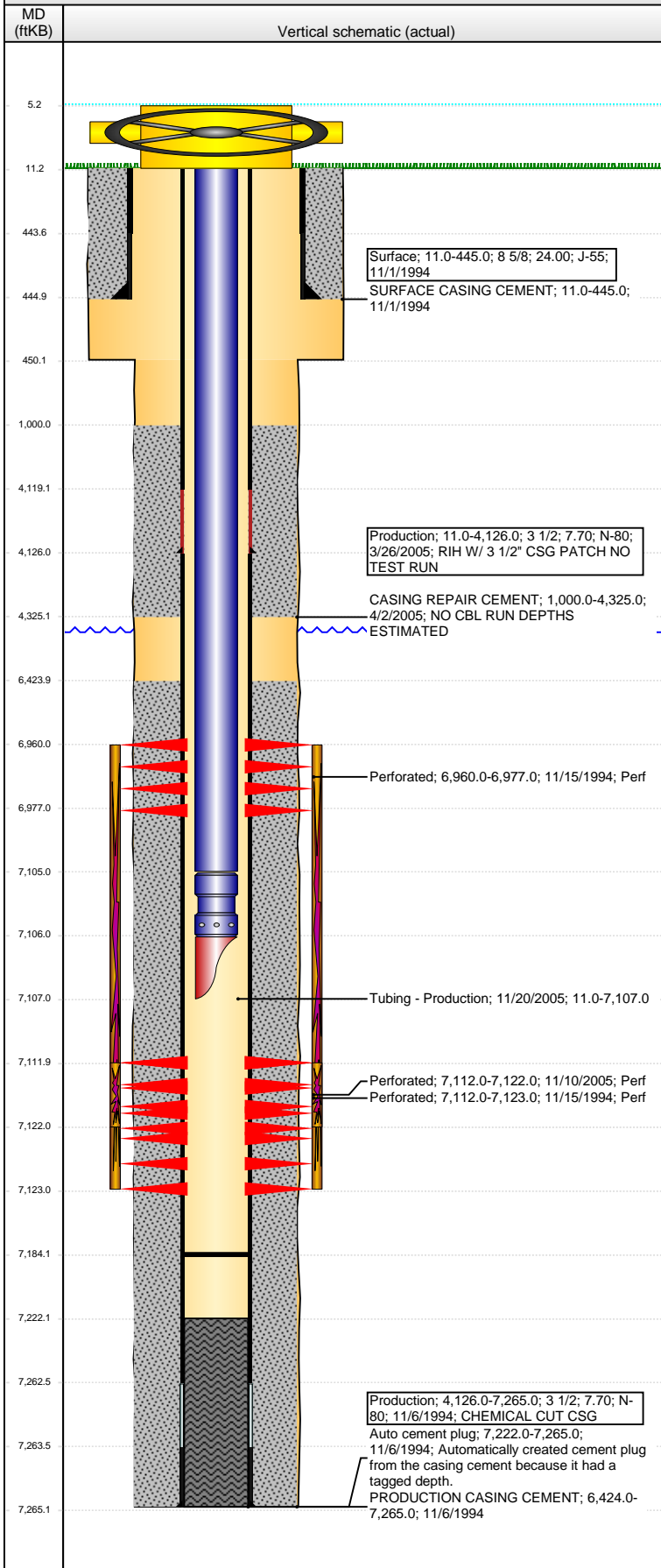


**Well Name: BICKLING 03-42**

VERTICAL - ORIGINAL HOLE, 3/24/2016 9:40:45 AM



## Well Header

API	Business Unit	District	Well Config
05-123-18622	DJ BASIN	15	VERTICAL
Original KB Elevation (ft)	KB - GL / MSL (ftKB)	Spud Date	P & A Date
4,814	11.00	10/31/1994	
Comment			
CSG RPR 3/2005 PATCH @ 4126'.			
Directions To Well			

## Congressional Location

Quarter 1	Quarter 2	Quarter 3	Quarter 4	Section	Township	Twnshp N...	Range	Rng E/W Dir
		NW	SE	3	6	N	65	W

## Bottom Hole Location

North-South Distance (ft)	From N or S Line	East-West Distance (ft)	From E or W Line

## Plug Back Total Depths

Date	Depth (ftKB)	Method	Com
11/6/1994	7,222.0	CASING TALLY	FLOAT SHOE
11/10/1994	7,172.0	CASED HOLE LOG	DEPTH LOGGER ON CBL
11/10/2005	7,184.0	TAG	CLEAN OUT BEFORE FRAC

## Wellbore Sections

Section Des	Size (in)	Act Top, MD (ftKB)	Act Btm, MD (ftKB)
SURFACE	12 1/4	11.0	450.0
PRODUCTION	7 7/8	450.0	7,265.0

## Zone Statuses

Zone Name	Status Date	Status	Fluid Type	Job	Prod Method
NIOBRARA	11/24/1994	PR		DRILLING/CO...	
NIOBRARA	11/29/2005	PR		RE-FRAC, 3/20...	
CODELL	11/24/1994	PR		DRILLING/CO...	
CODELL	11/29/2005	PR		RE-FRAC, 3/20...	

## Casing Strings

Surface, 445.0ftKB							
Casing Description	Run Date	OD (in)	Wt/Len (l...	Grade	Top, MD (ft...	MD (ftKB)	
Surface	11/1/1994	8 5/8	24.00	J-55	11.0	445.0	

## Production, 4,126.0ftKB

Casing Description	Run Date	OD (in)	Wt/Len (l...	Grade	Top, MD (ft...	MD (ftKB)
Production	3/26/2005	3 1/2	7.70	N-80	11.0	4,126.0

## Production, 7,265.0ftKB

Casing Description	Run Date	OD (in)	Wt/Len (l...	Grade	Top, MD (ft...	MD (ftKB)
Production	11/6/1994	3 1/2	7.70	N-80	11.0	7,265.0

## Cement

Description	Top Depth (ftKB)	Bottom Depth (ftKB)
SURFACE CASING CEMENT	11.0	445.0
PRODUCTION CASING CEMENT	6,424.0	7,265.0
CASING REPAIR CEMENT	1,000.0	4,325.0

## Tubing Strings

Tubing Description	Run Date	String...	ID (in)	Wt (lb/ft)	Grade	Len (ft)	Set De...
Tubing - Production	11/20/2005	5	2 1/16	1.751	3.25	J-55	7,096.00

## Tubing Components

Item Des	OD (in)	Wt (lb/ft)	Grade	Jts	Len (ft)	Btm (ftKB)	Btm (TVD) (ftKB)
Tubing	2 1/16	3.25	J-55	218	7,094.00	7,105.0	
Seal Nipple	2 1/16				1.00	7,106.0	
Mule Shoe	2 1/16				1.00	7,107.0	

## Perforation Data

Zone	Bnch/St g	Entered Shot Total	Top (ftKB)	Btm (ftKB)	Date
NIOBRARA, ORIGINAL HOLE		8	6,960.00	6,977.00	11/15/1994
CODELL, ORIGINAL HOLE		8	7,112.00	7,123.00	11/15/1994
CODELL, ORIGINAL HOLE		40	7,112.00	7,122.00	11/10/2005

**Well Name: BICKLING 03-42**

VERTICAL - ORIGINAL HOLE, 3/24/2016 9:40:47 AM

## Stimulations & Treatments

Date 11/15/1994	Zone NIOBRARA-CODELL, ORIGINAL HOLE	Primary Job Type DRILLING/COMPLETION - ORIGINAL
Technical Result	Tech Result Details	Tech Result Note

Comment  
**LIMITED ENTRY**

Date 11/18/2005	Zone CODELL, ORIGINAL HOLE	Primary Job Type RE-FRAC
Technical Result	Tech Result Details	Tech Result Note

Comment

## Other In Hole

Run Date	Des	OD (in)	Top (ftKB)	Btm (ftKB)

## Logs

Date	Type	Top, MD (ftKB)	Btm, MD (ftKB)
11/5/1994	COMPENSATED DENSITY	2,337.8	7,280.0
11/5/1994	INDUCTION	2,337.8	7,280.0
11/10/1994	SONIC	6,330.0	7,168.0

