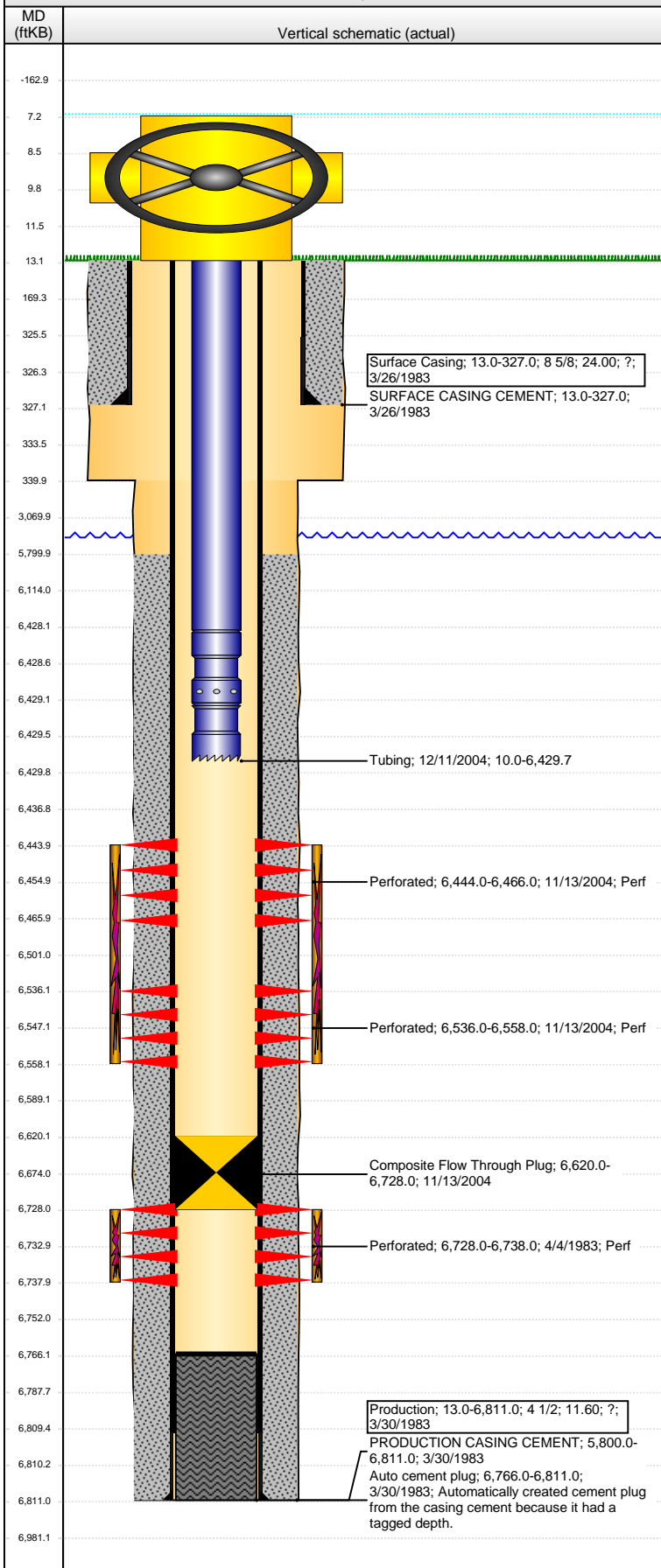


Well Name: LOLOFF 01

VERTICAL - ORIGINAL HOLE, 3/24/2016 1:31:21 PM



Well Header								
API 05-123-11068		Business Unit DJ BASIN		District 15		Well Config VERTICAL		
Original KB Elevation (ft) 4,622		KB - GL / MSL (ftKB) 13.00		Spud Date 3/25/1983		P & A Date		
Comment								
Directions To Well								
Congressional Location								
Quarter 1	Quarter 2	Quarter 3	Quarter 4	Section	Township	Twnshp N...	Range	Rng E/W Dir
		NE	SW	26	5	N	64	W
Bottom Hole Location								
North-South Distance (ft)		From N or S Line		East-West Distance (ft)			From E or W Line	
Plug Back Total Depths								
Date	Depth (ftKB)	Method			Com			
3/30/1983	6,751.0	CASING TALLY			PBTD REPORTED ON ORIGINAL COMPLETION R...			
11/13/2004	6,710.0	TAG			LAST REPORTED CLEAN OUT			
11/13/2004	6,766.0	CASED HOLE LOG			DEPTH LOGGER			
Wellbore Sections								
Section Des			Size (in)		Act Top, MD (ftKB)		Act Btm, MD (ftKB)	
SURFACE			12 1/4		13.0		340.0	
PRODUCTION			7 7/8		340.0		6,811.0	
Zone Statuses								
Zone Name	Status Date	Status	Fluid Type	Job	Prod Method			
NIOBRARA	11/23/2004	PR		RECOMPLETI...				
CODELL	5/7/1983	PR		DRILLING/CO...				
CODELL	11/13/2004	SI		RECOMPLETI...				
Casing Strings								
Surface Casing, 327.0ftKB								
Casing Description		Run Date	OD (in)	Wt/Len (l...	Grade	Top, MD (ft...	MD (ftKB)	
Surface Casing		3/26/1983	8 5/8	24.00	?	13.0	327.0	
Production, 6,811.0ftKB								
Casing Description		Run Date	OD (in)	Wt/Len (l...	Grade	Top, MD (ft...	MD (ftKB)	
Production		3/30/1983	4 1/2	11.60		13.0	6,811.0	
Cement								
Description					Top Depth (ftKB)		Bottom Depth (ftKB)	
SURFACE CASING CEMENT					13.0		327.0	
Description					Top Depth (ftKB)		Bottom Depth (ftKB)	
PRODUCTION CASING CEMENT					5,800.0		6,811.0	
Tubing Strings								
Tubing Description		Run Date	String...	ID (in)	Wt (lb/ft)	Grade	Len (ft)	Set De...
Tubing		12/11/2004 4	2 3/8	1.995	4.70	J-55	6,419.70	
Tubing Components								
Item Des		OD (in)	Wt (lb/ft)	Grade	Jts	Len (ft)	Btm (ftKB)	Btm (TVD) (ftKB)
EUE 8rd Tubing		2 3/8	4.70	J-55	198	6,418.20	6,428.2	
Seal Nipple		2 3/8				1.00	6,429.2	
Notched collar		2 3/8				0.50	6,429.7	
Perforation Data								
Zone		Bnch/St g	Entered Shot Total	Top (ftKB)		Btm (ftKB)		Date
NIOBRARA, ORIGINAL HOLE			132	6,444.00		6,466.00		11/13/2004
NIOBRARA, ORIGINAL HOLE			132	6,536.00		6,558.00		11/13/2004
CODELL, ORIGINAL HOLE			30	6,728.00		6,738.00		4/4/1983
Stimulations & Treatments								
Date	Zone			Primary Job Type				
4/7/1983	CODELL, ORIGINAL HOLE			DRILLING/COMPLETION - ORIGINAL				
Technical Result			Tech Result Details			Tech Result Note		
Comment								
Date	Zone			Primary Job Type				
11/22/2004	NIOBRARA, ORIGINAL HOLE			RECOMPLETION				
Technical Result			Tech Result Details			Tech Result Note		
Comment								

Well Name: LOLOFF 01

VERTICAL - ORIGINAL HOLE, 3/24/2016 1:31:23 PM

Other In Hole

Run Date	Des	OD (in)	Top (ftKB)	Btm (ftKB)
11/13/2004	Composite Flow Through Plug	4	6,620.0	6,728.0

Logs

Date	Type	Top, MD (ftKB)	Btm, MD (ftKB)
3/30/1983	DENSILOG GAMA RAY	6,350.0	6,809.0
3/30/1983	INDUCTION ELECTROLOG	327.0	6,806.0
11/13/2004	CEMENT BOND	5,600.0	6,763.0
11/12/2014	GYRO	10.0	6,350.0

