

RECEIVED

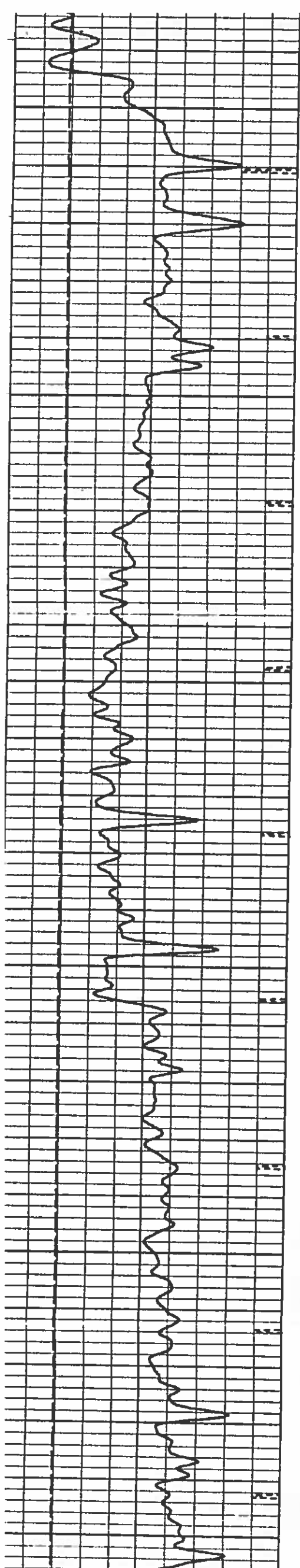
JUL 17 1986

COLORADO OIL & GAS CONS. COMMISSION



01727412

		COMPENSATED DENSILOG®		MINILOG®	
		GAMMA RAY			
FILE NO.	COMPANY <u>DIVERSIFIED RESOURCES LIMITED</u>				
API NO.	WELL <u>FEDERAL WILDHORSE NO.10-31</u>				
	FIELD <u>WILDHORSE EXTENSION</u>				
	COUNTY <u>WELD</u> STATE <u>COLORADO</u>				
LOCATION:			OTHER SERVICES		
NW SE			DIFL PROLOG		
SEC 31 TWP 8 N RGE 58 W					
PERMANENT DATUM <u>G.L.</u> ELEV. <u>4776</u>			ELEVATIONS		
LOGGING MEASURED FROM <u>K.B.</u> <u>9</u> FT. ABOVE P.D.			KB 4785		
DRILLING MEASURED FROM <u>K.B.</u>			DF		
			GL 4776		
DATE	11-2-85				
RUN	1				
SERVICE ORDER	97791				
DEPTH-DRILLER	6490				
DEPTH-LOGGER	6493				
BOTTOM LOGGED INTERVAL	6491				
TOP LOGGED INTERVAL	5600				
CASING - DRILLER	8 5/758 5/ @ 220				@
CASING - LOGGER	NOT LOGGED				
BIT SIZE	7 7/8				
TYPE FLUID IN HOLE	QUEBRACHO				
DENSITY / VISCOSITY	9.6	65			
PH / FLUID LOSS	10.0	8.5			
SOURCE OF SAMPLE	FLOWLINE				
RM AT MEPS. TEMP.	2.96	@ 96		@	
RMF AT MEPS. TEMP.	2.22	@ 96		@	
RMC AT MEPS. TEMP.	3.70	@ 96		@	
SOURCE OF RMF / RMC	CALC	CALC			
RM AT BHT	1.73	@ 161		@	
TIME SINCE CIRCULATION	4.5 HRS				
MAX. REC. TEMP. DEG. F	161				
EQUIP. NO. / LOC.	6270	F.M.			
RECORDED BY	JL PATTERSON				
WITNESSED BY	MR. SIMMONS				



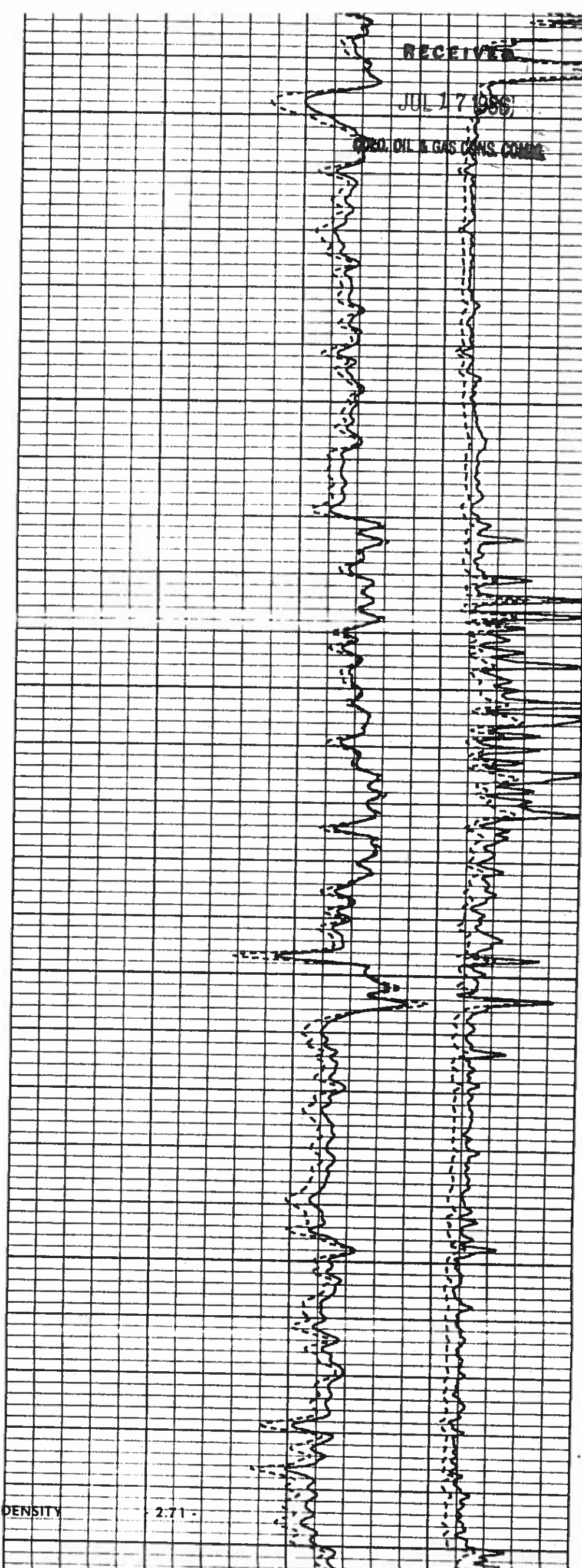
GRAIN DENSITY

2.71 -

06100

06000

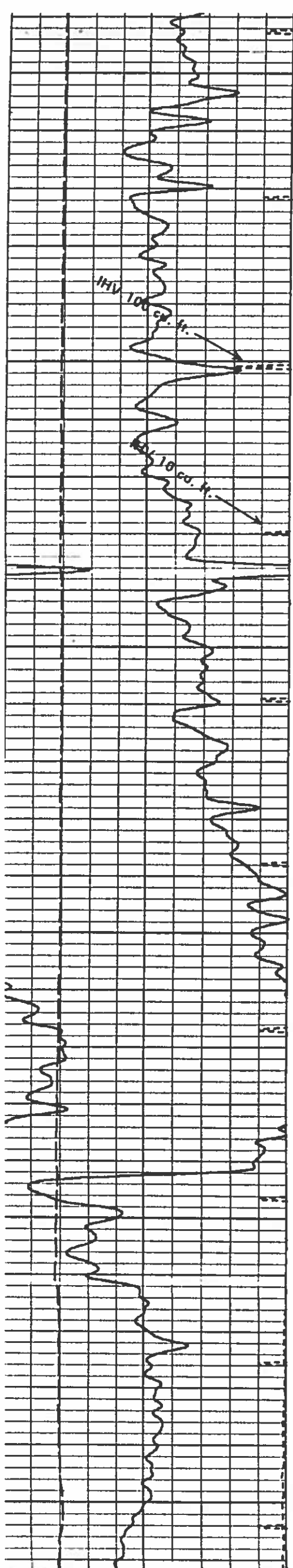
05900



RECEIVED

JUL 17 1986

PROD. OIL & GAS CONS. COMM.



GRAIN DENSITY

2.71

RECEIVED

11 17 1986

COAL & GAS CONS CORP

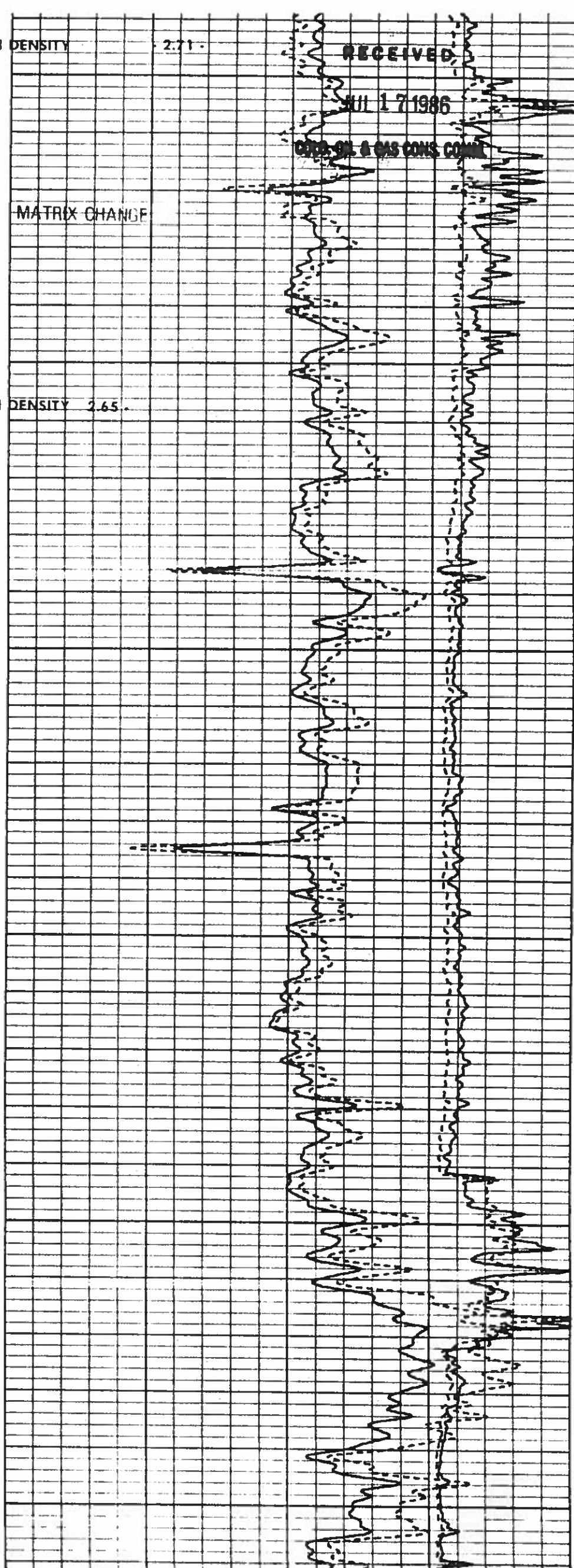
MATRIX CHANGE

06200

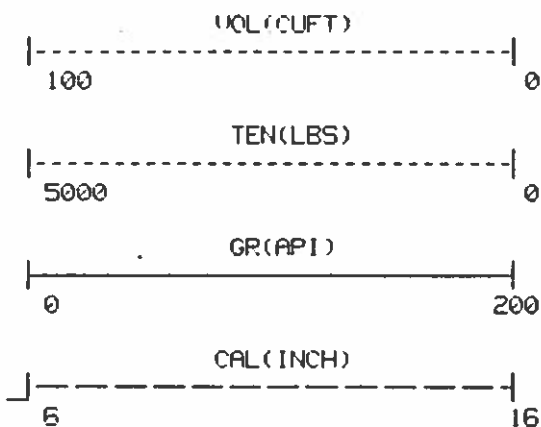
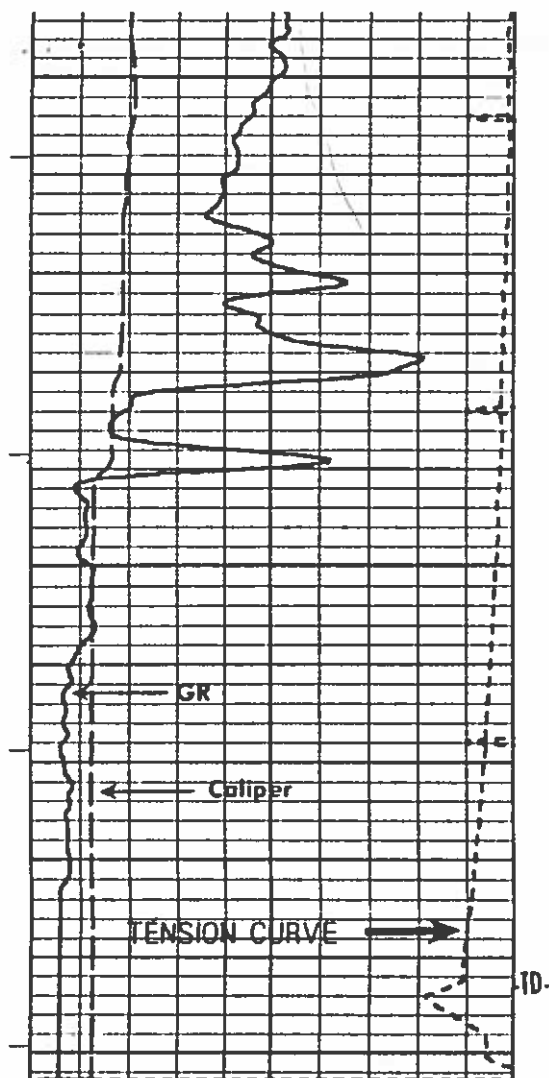
GRAIN DENSITY 2.65

06300

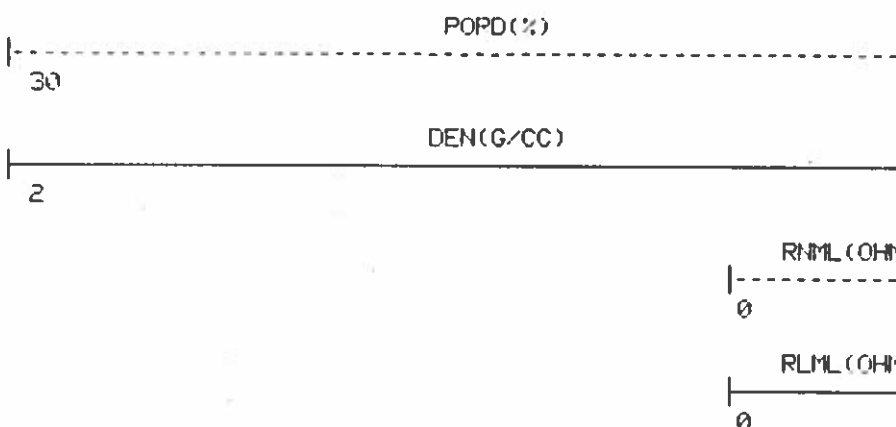
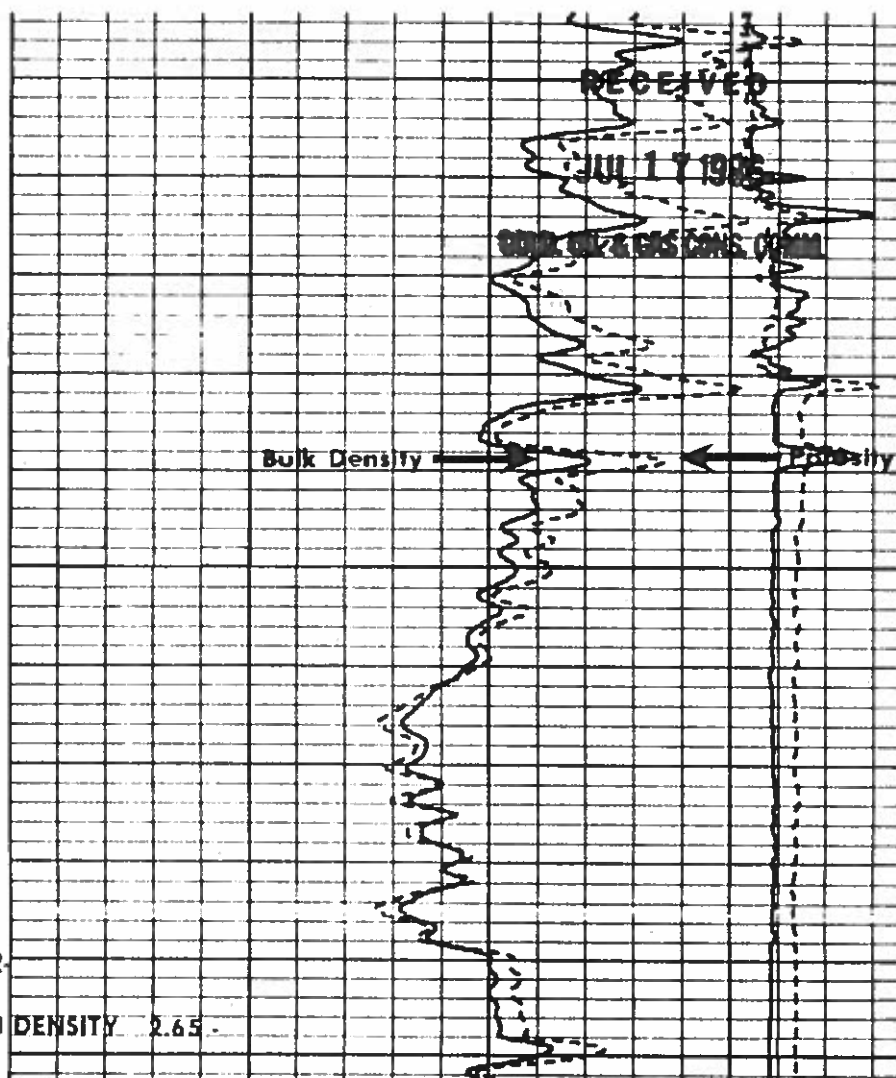
06400



06400



GRAIN DENSITY 2.65



CURVE DELAYS

CURVE	DELAY	UNITS
SSD	0	FT, IN
LSD	0.3	FT, IN
CAL	0.0	FT, IN
FLML	1.0	FT, IN
RLML	1.0	FT, IN
GR	14.6	FT, IN

PARAMETERS

NAME	DEPTH INTERVAL	VALUE	UNITS
A	6508 TO 6313	0.000	
"	6508 TO 6313	0.000	