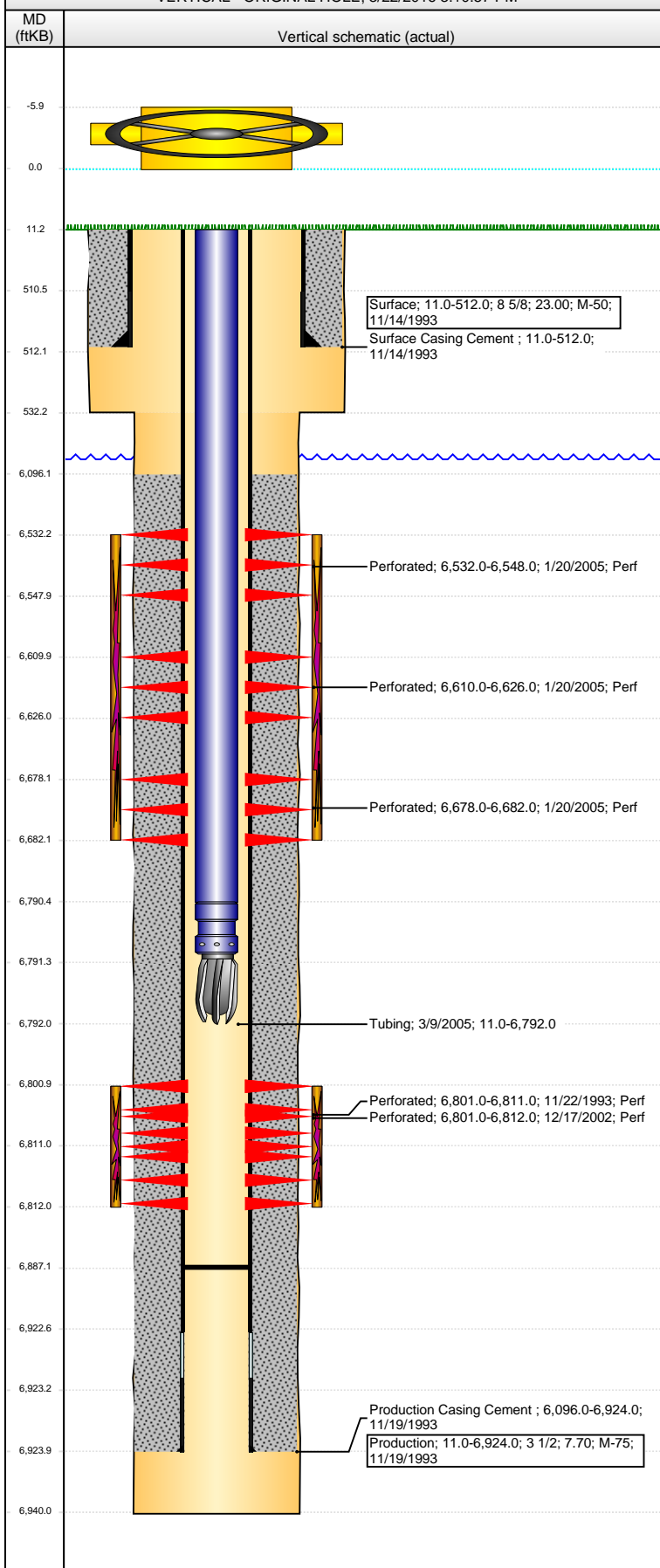


Well Name: ROHR 15-06

VERTICAL - ORIGINAL HOLE. 3/22/2016 3:10:57 PM

[illegible]

API 05-123-17604	Business Unit DJ BASIN	District 15	Well Config VERTICAL
Original KB Elevation (ft) 4.656	KB - GL / MSL (ftKB) 11.00	Spud Date 11/13/1993	P & A Date

Comment

Push CIBP to 6887 03/05

TD DISCREPANCY: ST RPT = 6935, DRL RPT & OPEN HOLE LOG = 6940

NO CBL FOR NEW DRILL JOB IN WELL FILE.

Directions To Well

Congressional Location
1000
1001
1002
1003
1004
1005
1006
1007
1008
1009
1010
1011
1012
1013
1014
1015
1016
1017
1018
1019
1020
1021
1022
1023
1024
1025
1026
1027
1028
1029
1030
1031
1032
1033
1034
1035
1036
1037
1038
1039
1040
1041
1042
1043
1044
1045
1046
1047
1048
1049
1050
1051
1052
1053
1054
1055
1056
1057
1058
1059
1060
1061
1062
1063
1064
1065
1066
1067
1068
1069
1070
1071
1072
1073
1074
1075
1076
1077
1078
1079
1080
1081
1082
1083
1084
1085
1086
1087
1088
1089
1090
1091
1092
1093
1094
1095
1096
1097
1098
1099
1100
1101
1102
1103
1104
1105
1106
1107
1108
1109
1110
1111
1112
1113
1114
1115
1116
1117
1118
1119
1120
1121
1122
1123
1124
1125
1126
1127
1128
1129
1130
1131
1132
1133
1134
1135
1136
1137
1138
1139
1140
1141
1142
1143
1144
1145
1146
1147
1148
1149
1150
1151
1152
1153
1154
1155
1156
1157
1158
1159
1160
1161
1162
1163
1164
1165
1166
1167
1168
1169
1170
1171
1172
1173
1174
1175
1176
1177
1178
1179
1180
1181
1182
1183
1184
1185
1186
1187
1188
1189
1190
1191
1192
1193
1194
1195
1196
1197
1198
1199
1200
1201
1202
1203
1204
1205
1206
1207
1208
1209
1210
1211
1212
1213
1214
1215
1216
1217
1218
1219
1220
1221
1222
1223
1224
1225
1226
1227
1228
1229
1230
1231
1232
1233
1234
1235
1236
1237
1238

Quarter 1	Quarter 2	Quarter 3	Quarter 4	Section	Township	Twnshp N...	Range	Rng E/W Dir
		SE	NW	15	4	N	64	W

		-
Bottom Hole Location		

North-South Distance (ft)	From N or S Line	East-West Distance (ft)	From E or W Line
---------------------------	------------------	-------------------------	------------------

Plug Back Total Depths

Date	Depth (ftKB)	Method	Com
1/19/2005	6,886.0	CASED HOLE LOG	DEPTH LOGGER FROM CBL
3/9/2005	6,887.0	TAG	PUSH PLUG TO DEPTH

[illegible]

Section Des	Size (in)	Act Top, MD (ftKB)	Act Btm, MD (ftKB)
SURFACE	12 1/4	11.0	532.0
PRODUCTION	7 7/8	532.0	6,940.0

Zone Statuses

Zone Name	Status Date	Status	Fluid Type	Job	Prod Method
NIOBRARA	1/25/2005	PR	Oil	RECOMPLETI...	
NIOBRARA	3/10/2005	PR	Oil	RECOMPLETI...	
CODELL	12/4/1993	PR	Oil	DRILLING/CO...	
CODELL	12/31/2002	PR	Oil	RE-FRAC, 12/1...	
CODELL	3/10/2005	PR	Oil	RECOMPLETI...	

Casing Strings

Surface, 512.0ftKB						
Casing Description	Run Date	OD (in)	Wt/Len (l...	Grade	Top, MD (ft...	MD (ftKB)
Surface	11/14/1993	8 5/8	23.00	M-50	11.0	512.0

Production, 6,924.0ftKB

Casing Description	Run Date	OD (in)	Wt/Len (l...	Grade	Top, MD (ft...	MD (ftKB)
Production	11/19/1993	3 1/2	7.70	M-75	11.0	6.924.0

Cement

Description	Top Depth (ftKB)	Bottom Depth (ftKB)
Surface Casing Cement	11.0	512.0
Description	Top Depth (ftKB)	Bottom Depth (ftKB)
Production Casing Cement	6,096.0	6,924.0

Tubing Strings

Tubing Description	Run Date	String...	ID (in)	Wt (lb/ft)	Grade	Len (ft)	Set De...
Tubing	3/9/2005	2 1/16	1.751	3.25	J-55	6,781. 00	

Tubing Components

Item Des	OD (in)	Wt (lb/ft)	Grade	Jts	Len (ft)	Btm (ftKB)	Btm (TVD) (ftKB)
Tubing	2 1/16	3.25	J-55	206	6,779.20	6,790.2	
Pump Seating	2				1.00	6,791.2	
Nipple	1/16						
Blade Bit	2 1/16				0.80	6,792.0	

Perforation Data	
1	100%
2	100%
3	100%
4	100%
5	100%
6	100%
7	100%
8	100%
9	100%
10	100%
11	100%
12	100%
13	100%
14	100%
15	100%
16	100%
17	100%
18	100%
19	100%
20	100%
21	100%
22	100%
23	100%
24	100%
25	100%
26	100%
27	100%
28	100%
29	100%
30	100%
31	100%
32	100%
33	100%
34	100%
35	100%
36	100%
37	100%
38	100%
39	100%
40	100%
41	100%
42	100%
43	100%
44	100%
45	100%
46	100%
47	100%
48	100%
49	100%
50	100%
51	100%
52	100%
53	100%
54	100%
55	100%
56	100%
57	100%
58	100%
59	100%
60	100%
61	100%
62	100%
63	100%
64	100%
65	100%
66	100%
67	100%
68	100%
69	100%
70	100%
71	100%
72	100%
73	100%
74	100%
75	100%
76	100%
77	100%
78	100%
79	100%
80	100%
81	100%
82	100%
83	100%
84	100%
85	100%
86	100%
87	100%
88	100%
89	100%
90	100%
91	100%
92	100%
93	100%
94	100%
95	100%
96	100%
97	100%
98	100%
99	100%
100	100%

Zone	Brnch/St g	Entered Shot Total	Top (ftKB)	Btm (ftKB)	Date
NIOBRARA, ORIGINAL HOLE	A	96	6,532.00	6,548.00	1/20/2005
NIOBRARA, ORIGINAL HOLE	B	96	6,610.00	6,626.00	1/20/2005
NIOBRARA, ORIGINAL HOLE	B	24	6,678.00	6,682.00	1/20/2005
CODELL, ORIGINAL HOLE		20	6,801.00	6,811.00	11/22/1993
CODELL, ORIGINAL HOLE		44	6,801.00	6,812.00	12/17/2002

Well Name: ROHR 15-06

VERTICAL - ORIGINAL HOLE, 3/22/2016 3:10:59 PM

Stimulations & Treatments

Date 11/24/1993	Zone CODELL, ORIGINAL HOLE	Primary Job Type DRILLING/COMPLETION - ORIGINAL
Technical Result	Tech Result Details	Tech Result Note

Comment

Date 12/20/2002	Zone CODELL, ORIGINAL HOLE	Primary Job Type RE-FRAC
Technical Result	Tech Result Details	Tech Result Note

Comment

Date 1/24/2005	Zone NIOBRARA, ORIGINAL HOLE	Primary Job Type RECOMPLETION
Technical Result	Tech Result Details	Tech Result Note

Comment

Other In Hole

Run Date	Des	OD (in)	Top (ftKB)	Btm (ftKB)

Logs

Date	Type	Top, MD (ftKB)	Btm, MD (ftKB)
11/22/1993	DENSILOG	6,390.0	6,938.0
11/22/1993	GAMMA RAY	6,390.0	6,886.0
11/22/1993	INDUCTION	513.0	6,938.0
1/19/2005	CBL/CCL/GR	5,900.0	6,883.0

