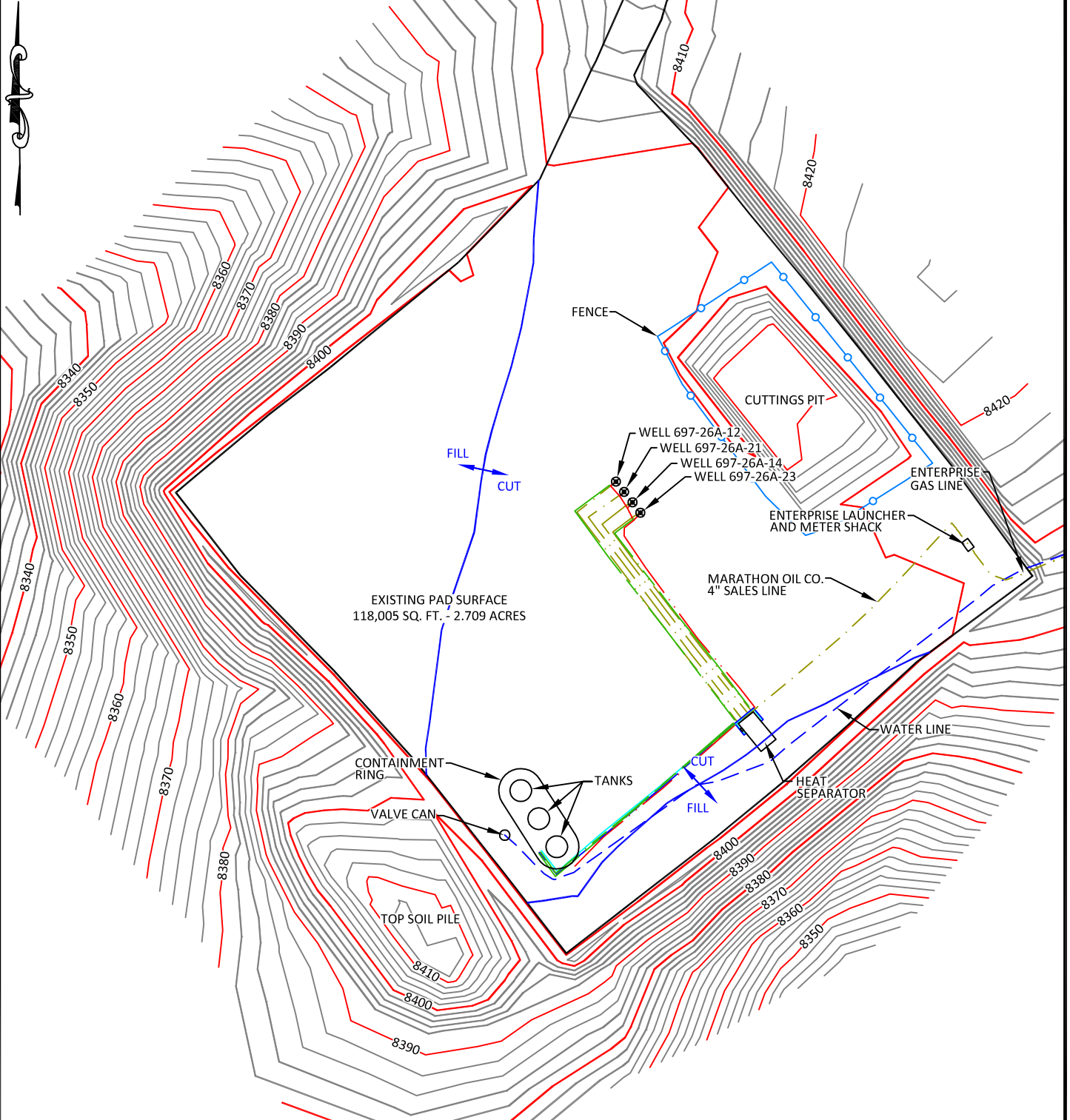


PAD 697-26A

SCALE: 1"= 80'
CONTOUR
INTERVAL 2'



CONFIDENTIALITY NOTES:

The information contained in this plat is legally privileged and confidential information intended only for the use of the recipients. If you are not the intended recipients, you are hereby notified that any use, dissemination, distribution or copying of this information is strictly prohibited.



**WILLIAM H. SMITH
& ASSOCIATES P.C.**

SURVEYING CONSULTANTS
550 EAST SECOND NORTH PHONE: 307-875-3638
GREEN RIVER, WY 307-875-3639
www.whsmithpc.com

DRAWN BY: JSJ

CHECKED BY: WHD

PROJECT NO: N/A

JOB NO: 26099

REVISIONS:

LEGEND

- GAS LINES
- WATER LINES
- CONDENSATE LINES
- GLYCOL LINES
- ELECTRIC LINES

LOCATION:
PAD 697-26A

WITHIN THE NE/4
SECTION 26,
T6S, R97W, 6TH
PM.

GARFIELD COUNTY,
COLORADO

MARATHON OIL COMPANY
PO BOX 3128, HOUSTON TX, 77253
5555 SAN FELIPE, HOUSTON TX, 77056

AS-BUILT PAD

SCALE: 1"=80'

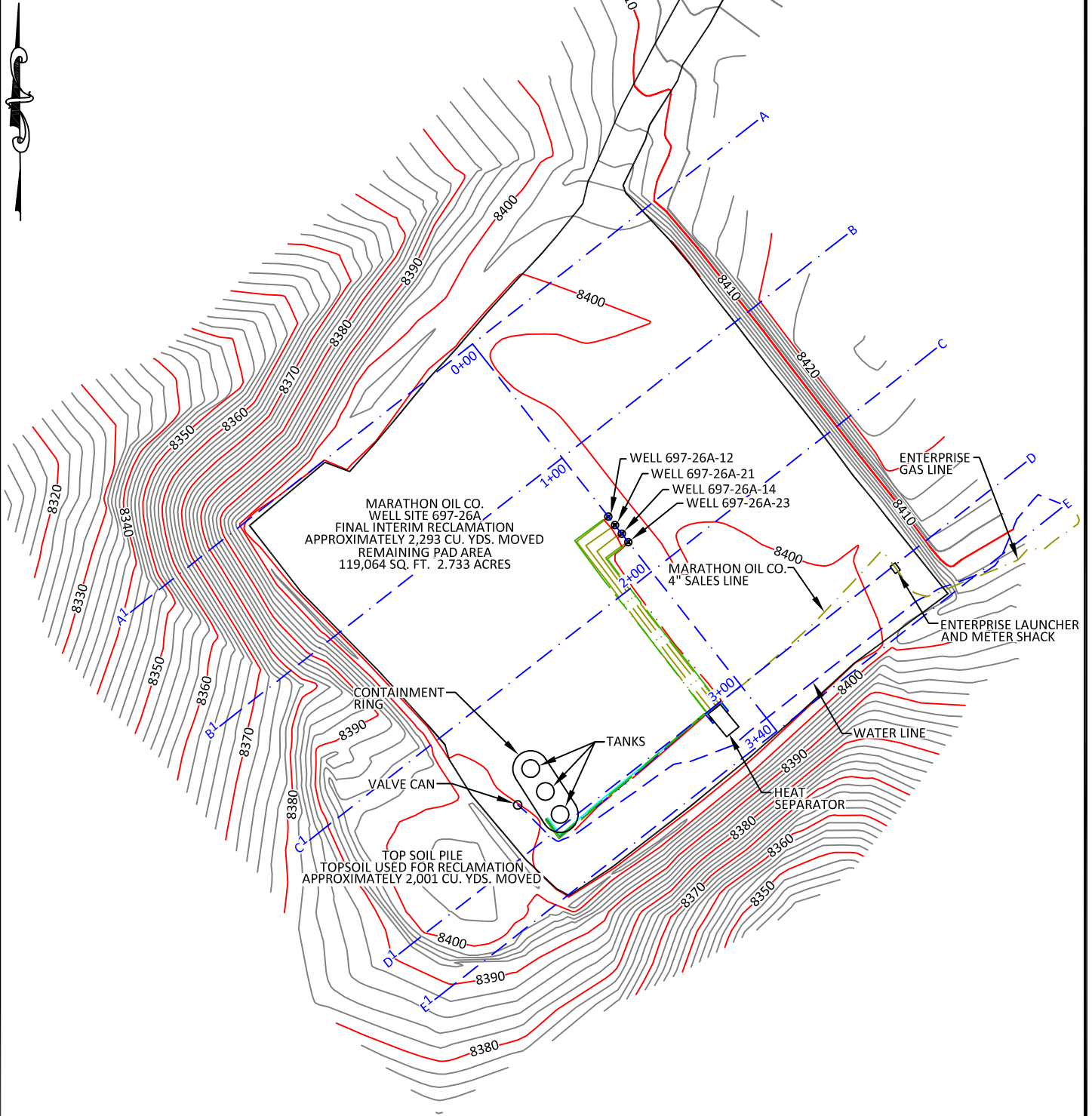
DATE: 10/14/2011

EXHIBIT "A"

SHEET 1 OF 3

PAD 697-26A

SCALE: 1"= 100'
CONTOUR
INTERVAL 2'



CONFIDENTIALITY NOTES:

The information contained in this plat is legally privileged and confidential information intended only for the use of the recipients. If you are not the intended recipients, you are hereby notified that any use, dissemination, distribution or copying of this information is strictly prohibited.



**WILLIAM H. SMITH
& ASSOCIATES P.C.**

SURVEYING CONSULTANTS

550 EAST SECOND NORTH PHONE: 307-875-3638
GREEN RIVER, WY 307-875-3639
www.whsmithpc.com

DRAWN BY: JSJ

CHECKED BY: WHD

PROJECT NO: N/A

JOB NO: 26099

REVISIONS:

DATA

FINAL INTERIM RECLAMATION
APPROXIMATELY 2,293 CU. YDS. MOVED

TOPSOIL USED FOR RECLAMATION
APPROXIMATELY 2,001 CU. YDS. MOVED

REMAINING PAD AREA
119,064 SQ. FT. 2.733 ACRES

LOCATION:

PAD 697-26A
WITHIN THE NE/4
SECTION 26,
T6S, R97W, 6TH
PM.

GARFIELD COUNTY,
COLORADO

MARATHON OIL COMPANY
PO BOX 3128, HOUSTON TX, 77253
5555 SAN FELIPE, HOUSTON TX, 77056

INTERIM RECLAMATION ASBUILT

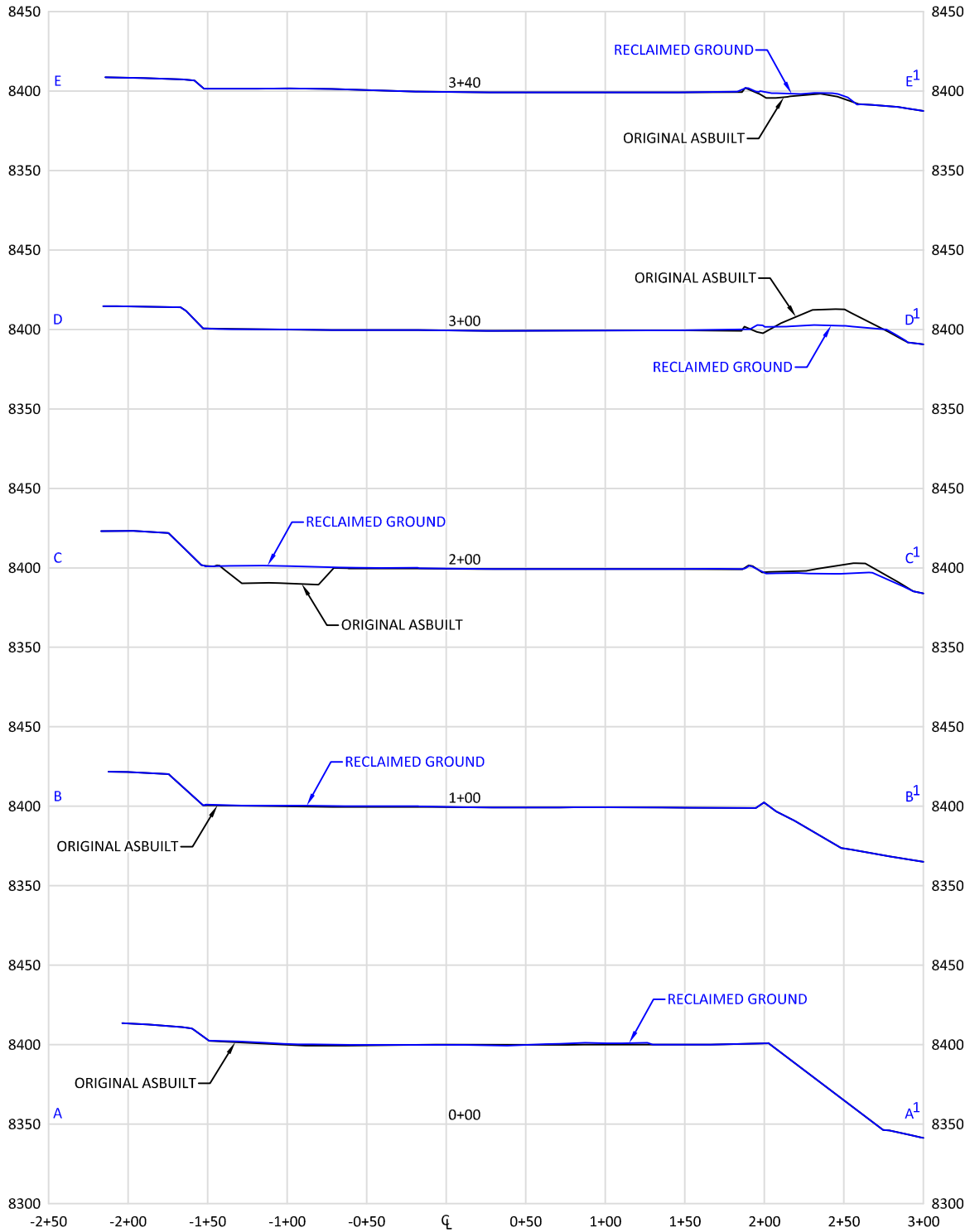
SCALE: 1"= 100'

DATE: 10/14/2011

EXHIBIT "A"

SHEET 2 OF 3

PAD 697-26A



CONFIDENTIALITY NOTES:

The information contained in this plat is legally privileged and confidential information intended only for the use of the recipients. If you are not the intended recipients, you are hereby notified that any use, dissemination, distribution or copying of this information is strictly prohibited.



**WILLIAM H. SMITH
& ASSOCIATES P.C.**

SURVEYING CONSULTANTS
550 EAST SECOND NORTH PHONE: 307-875-3638
GREEN RIVER, WY 307-875-3639
www.whsmithpc.com

DRAWN BY: JSJ

CHECKED BY: WHD

PROJECT NO: N/A

JOB NO: 26099

REVISIONS:

LEGEND

— ORIGINAL ASBUILT
— RECLAIMED GROUND

LOCATION:

PAD 697-26A
WITHIN THE NE/4
SECTION 26,
T6S, R97W, 6TH
PM.
GARFIELD COUNTY,
COLORADO

MARATHON OIL COMPANY

PO BOX 3128, HOUSTON TX, 77253
5555 SAN FELIPE, HOUSTON TX, 77056

INTERIM RECLAMATION ASBUILT CROSS SECTIONS

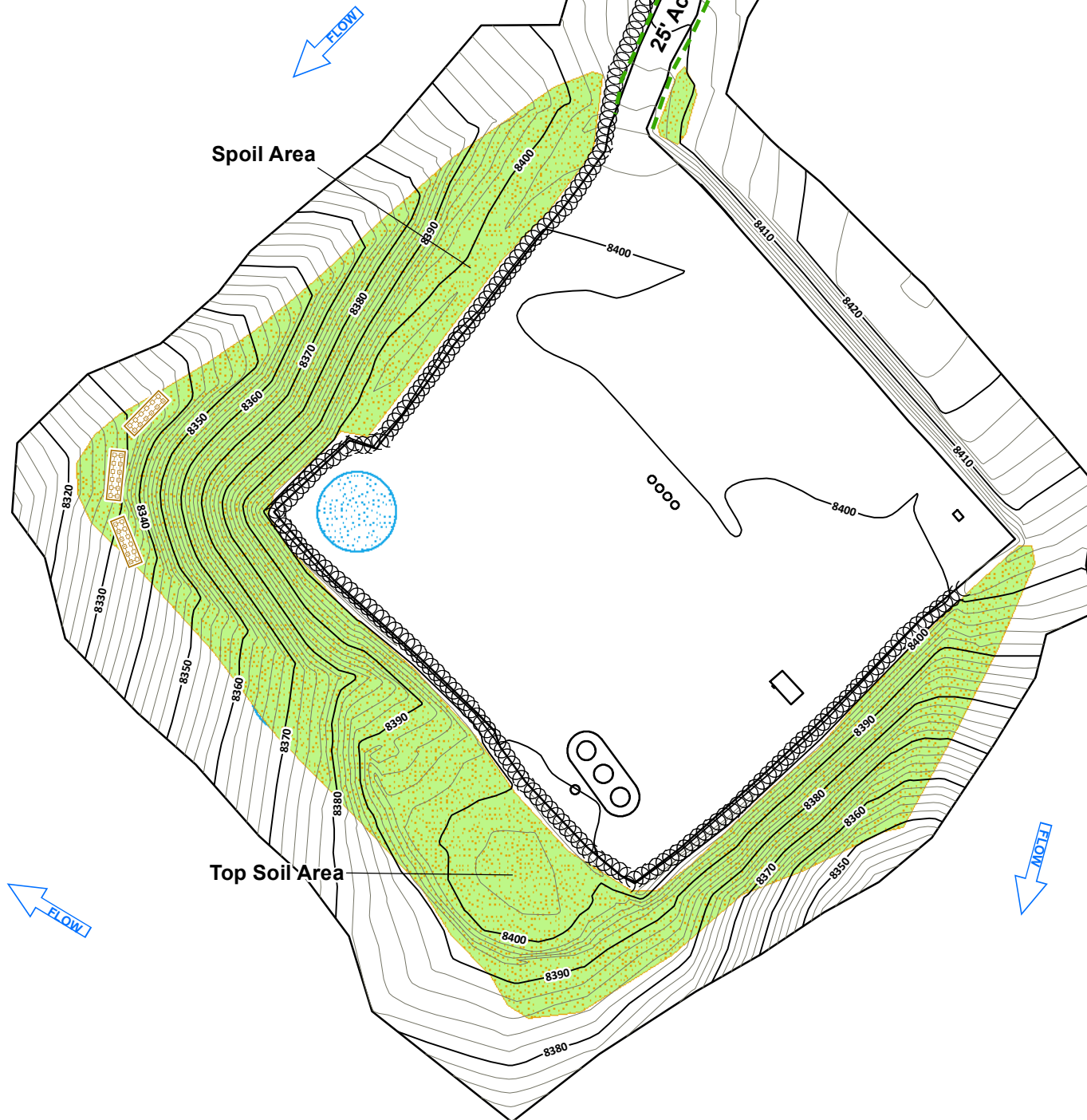
SCALE: 1"=100'H/100'V

DATE: 10/14/2011

EXHIBIT "A"

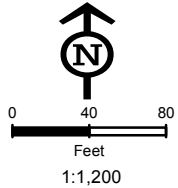
SHEET 3 OF 3

Receiving Waters:
Unnamed Tributary to Baker Gulch
750 Feet South



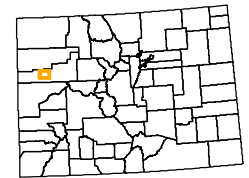
Legend

- Culvert
- Sediment Trap
- Cattle Pond
- Water Bar
- Rip Rap
- Bales
- V-Ditch W/Check Dam
- Diversion Ditch
- Site Berm
- Toe Berm
- Fiber Roll
- Silt Fence
- Area To Be Reclaimed
- Fence
- Blanket
- Cut
- Fill
- Seeded & Hydromulched
- Soil Roughening
- Snow Storage
- Rip Rap (Large Area)



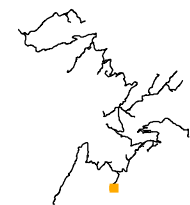
Not Present
Asphalt Or Concrete Batch Plants

Project Location



Garfield County

Map Index Overview



**Pad Site
697-26A**

Total Disturbed Area = 2.73 Acres

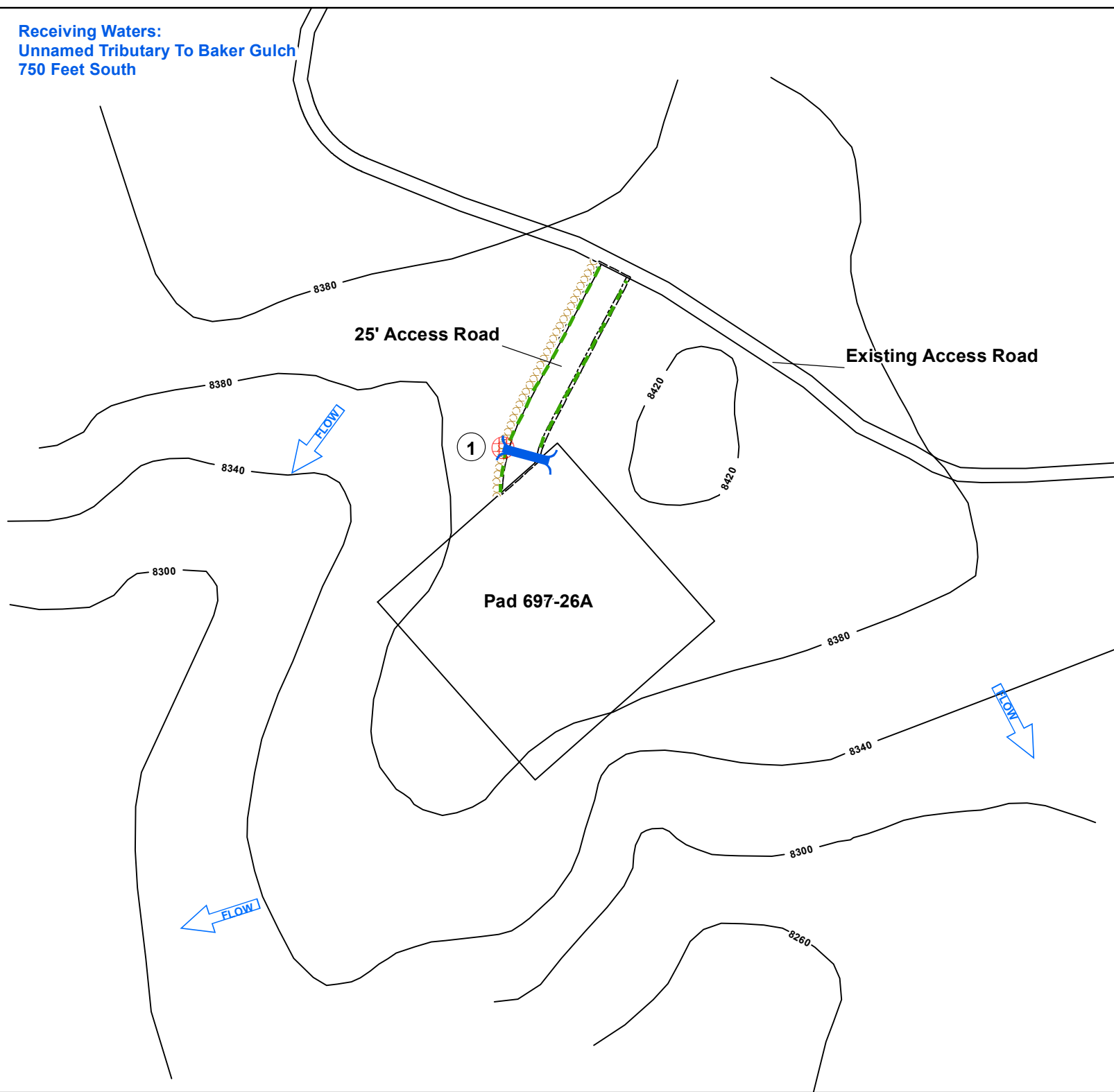
MARATHON OIL

REVISED	BY:	COMMENT:
3/28/2012	BJB	TEMPLATE CREATION
3/28/2012	BJB	MAP CREATION
8/27/2012	BJB	BMP REVISION
11/12/2013	BJB	BMP REVISION



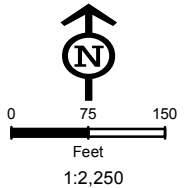
InterTech E&E, LLC
bbergstrom@cbmainc.com
M:\Projects\Marathon\Piceance\Projects\SWMP\2013\697_26A\SWMP_697_26A_20131112.mxd

**Receiving Waters:
Unnamed Tributary To Baker Gulch
750 Feet South**



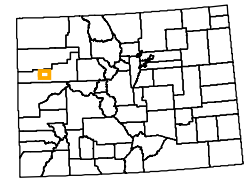
Legend

- | | | | |
|---|---------------|---|-----------------------|
|  | Culvert |  | Area To Be Reclaimed |
|  | Sediment Trap |  | Fence |
|  | Cattle Pond |  | Blanket |
|  | Water Bar |  | Cut |
|  | Water Bar |  | Fill |
|  | Water Bar |  | Seeded & Hydromulched |
|  | Water Bar |  | Soil Roughening |
|  | Water Bar |  | Snow Storage |
|  | Water Bar | | |
|  | Water Bar | | |
|  | Water Bar | | |
|  | Water Bar | | |
|  | Water Bar | | |



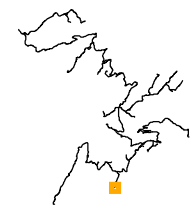
Not Present
Asphalt Or Concrete Batch Plants

Project Location



Garfield County

Map Index Overview



Access Road To Pad 697-26A

Diagram Maintained In GIS. Do Not Use GPS.

Approximate Road Length = 320 LF

MARATHON OIL

REVISED	BY:	COMMENT:
3/28/2012	BJB	TEMPLATE CREATION
3/28/2012	BJB	MAP CREATION



InterTech E&E, LLC
bbergstrom@cbmainc.com
M:\Projects\Marathon\Piceance\Projects\SWMP\
2012\697_26A\SWMP_697_26A_Road_20120328.mxd