

Reclamation Plan

Well Pad Downsizing and Reclamation Activities For:
Razor 21A, Razor 21B, Razor 21C, Razor 21CPB, Razor 26K, Razor
26L, Razor 27I, Razor 27K, Razor 27L, and Horsetail 18-0733H.

March 29, 2016

Whiting Petroleum Corporation
56719 CR 127
New Raymer, Co 80742



Introduction

Whiting Petroleum Corporation (Whiting) has drafted this Reclamation Plan to serve as guidance for the stabilization and reclamation of ten (10) well production locations (sites). The sites are located in Weld County, Colorado and their locations have been included as part of this Reclamation Plan as Attachment 1. The sites generally consist of multiple tanks, well head, treater house, and flare. These ten sites are included in Whiting's overall interim reclamation program.

Schedule

Currently, Whiting anticipates that reclamation activities will begin on April 4, 2016 and will be completed on June 10, 2016. Reclamation activities have been broken down into two separate tasks. Task 1 includes the initial earthwork involved with the appropriate methods for downsizing a well pad in accordance with COGCC regulations. Task 2 includes the stabilization methods using the appropriate native prairie grass seed mix in accordance with COGCC regulations. The following table shows the anticipated time each task should take at each location.

<u>Location</u>	<u>Task 1 # of Days</u>	<u>Task 2 # of Days</u>
Razor 21A	4	2
Razor 21B	4	2
Razor 21C	4	2
Razor 21CPB	2	2
Razor 26K	4	2
Razor 26L	4	2
Razor 27I	4	2
Razor 27K	4	2
Razor 27L	4	2
Horsetail 18-0733	4	2

Site Maps

Site maps show the approximate aerial footprint that is to be downsized at each location. Detailed site maps are shown in Attachment 1.

De-compaction Methods

All areas compacted by drilling and subsequent oil and gas operations which are no longer needed following completion of such operations will be cross ripped to a depth of eighteen (18) inches unless, and to the extent bedrock is encountered at a shallower depth.

Seed Mixture, Application Methods, and Seeding Rate

The following table shows the native prairie grass seed mixture and application rate that will be properly drilled within the downsized area.

<u>Seed Mixture/Variety</u>	<u>Application Method</u>	<u>Seeding Rate</u>
<ul style="list-style-type: none"> • Buffalo grass, Sharps Improved • Sterile Triticale, Quickguard • Western Wheatgrass, Rosana • Sideoats Grama, El Reno • Green Needle, Lodrom • Rocky MTN Beeplant, VNS • Blue Grama, Alma • Prairie Coneflower, VNS 	Disk seeder	50lbs/1.455 acres

If site conditions warrant a different seed mixture, it will be documented in this plan and on the site maps.

Mulch Type and Mulching Rates

Certified straw or cornstalk mulch will be used in conjunction with native grass seed and spread over the downsized area. Mulch will be properly crimped into the soil using mechanical means. The table below shows the type of mulch and the associated application rate.

<u>Mulch Type</u>	<u>Application Rate</u>
Straw	1.5 to 2 tons per acre
Cornstalk	5 tons per acre

Stormwater Controls

Stormwater controls will be implemented on a site by site basis and will generally consist of but are not limited to:

- Diversion Ditch
- Sediment Trap
- Earthen Berm
- Surface Roughening
- Straw wattles

Inspections will be conducted as per Whiting's Stormwater Management Plan (SWMP) to ensure site conditions and stormwater controls are adequate and in place to effectively manage stormwater.

Weed Management Strategy

Musk Thistle and various other weeds occur throughout the DJ Basin in pastures, rangeland, roadsides, and non-crop areas. Weed control will commence in late spring and early summer no later than May 30th, before seeds are produced. Herbicides that may be used include but are not limited to the following.

<u>Herbicide</u>	<u>Application Rate/Acre</u>	<u>Application Timing</u>
Tordon	0.5 to 1 pint	Spring/early summer; or Fall
Milestone	5-7 fluid ounces	Spring/early summer; or fall
Transline	0.67 to 1.33 pints	Spring/early summer; or fall
Banvil, Vanquish, or Clarity	1-2 pints	Spring/early summer; or fall
Perspective	3-4.5 ounces	Spring/early summer; or fall
Cimarron X-tra	0.5 ounces	Spring/early summer; or fall
Escort	0.5 ounces	Spring/early summer; or fall

Higher application rates may be used for older or dense stands of weeds.

Vegetative Monitoring

Vegetation density within the downsized area will be compared to vegetation that is outside of the previously disturbed area. Vegetative monitoring will continue throughout the growing season until vegetative cover has been established at 80% pre-disturbance area levels.

Fertilizer and Soil Amendments

If deemed necessary, fertilizer and soil amendments may be used and will be documented on the site diagrams.

Attachment 1 – Site Diagrams

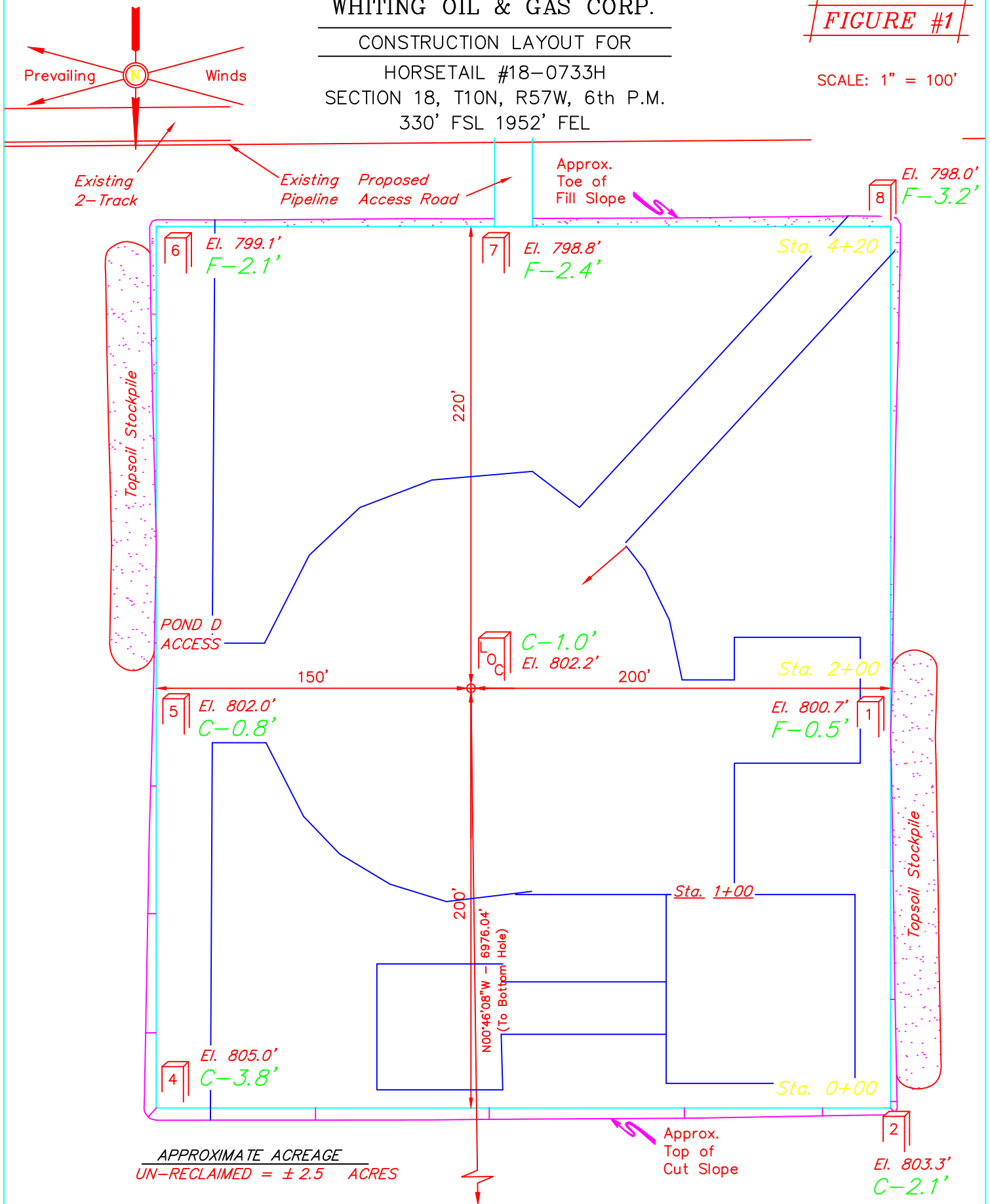
WHITING OIL & GAS CORP.

CONSTRUCTION LAYOUT FOR

HORSETAIL #18-0733H
SECTION 18, T10N, R57W, 6th P.M.
330' FSL 1952' FEL

FIGURE #1

SCALE: 1" = 100'



WHITING OIL & GAS CORP.

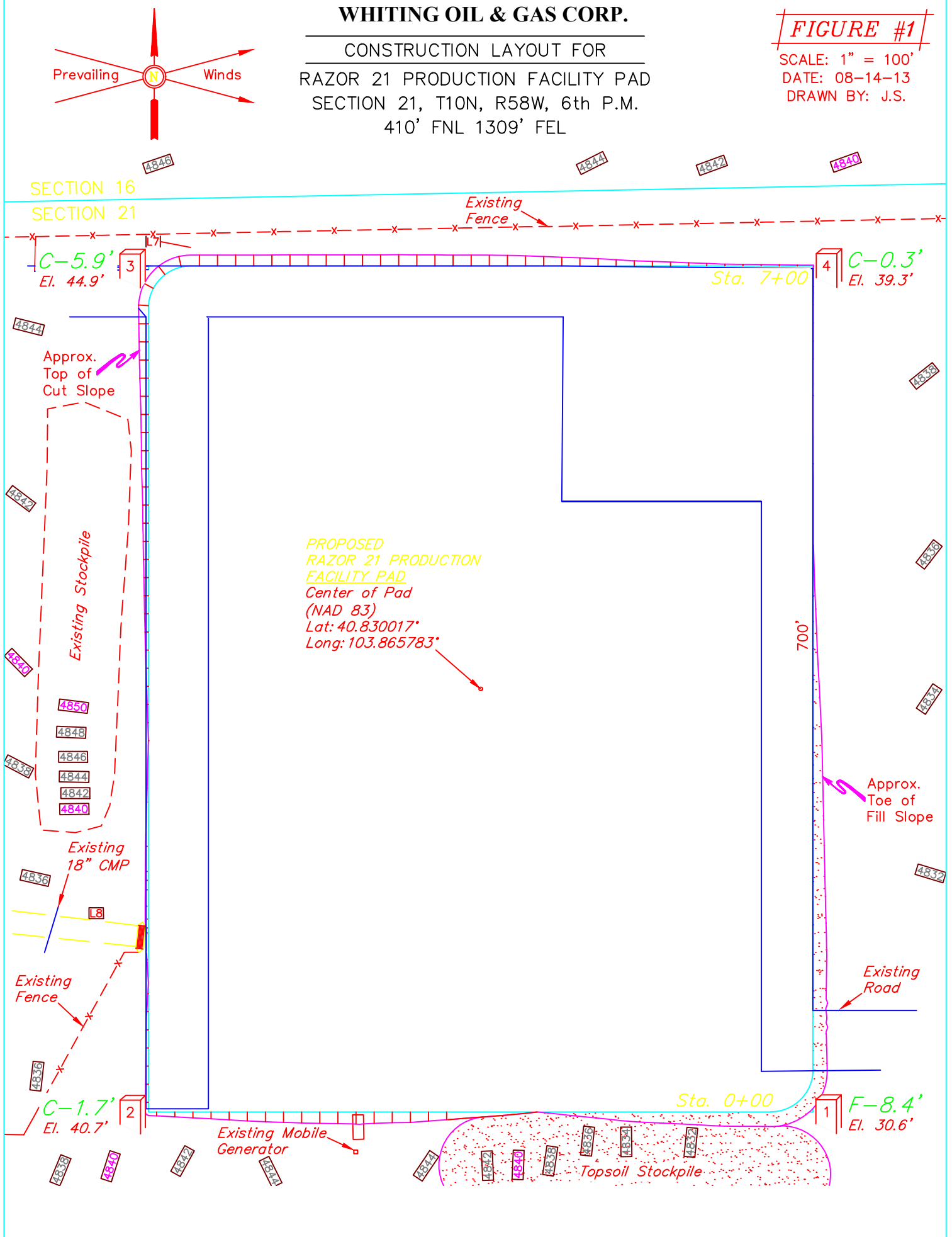
CONSTRUCTION LAYOUT FOR RAZOR 21 PRODUCTION FACILITY PAD SECTION 21, T10N, R58W, 6th P.M. 410' FNL 1309' FEL

FIGURE #1

SCALE: 1" = 100'

DATE: 08-14-13

DRAWN BY: J.S.



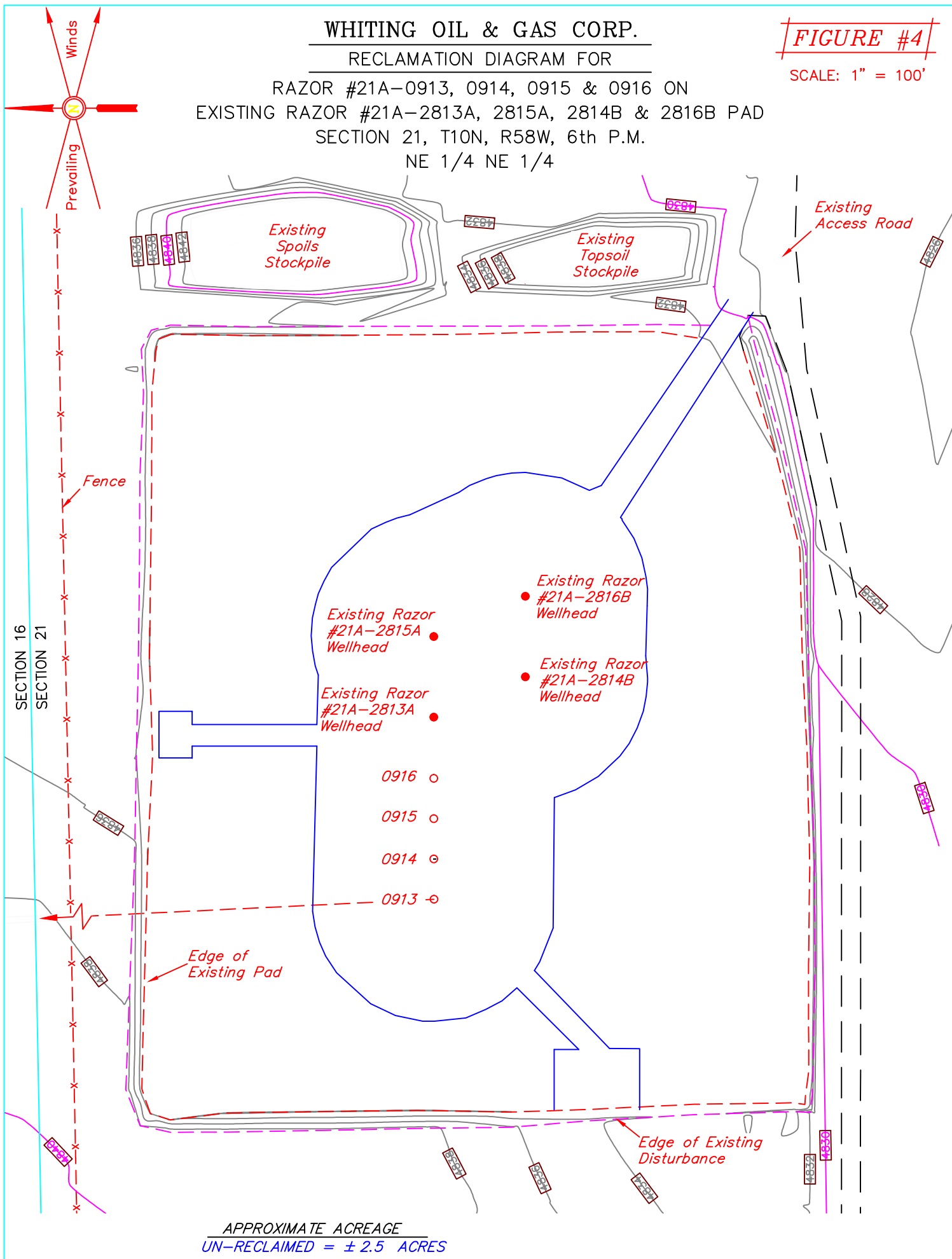
WHITING OIL & GAS CORP.

RECLAMATION DIAGRAM FOR

RAZOR #21A-0913, 0914, 0915 & 0916 ON
EXISTING RAZOR #21A-2813A, 2815A, 2814B & 2816B PAD
SECTION 21, T10N, R58W, 6th P.M.
NE 1/4 NE 1/4

FIGURE #4

SCALE: 1" = 100'



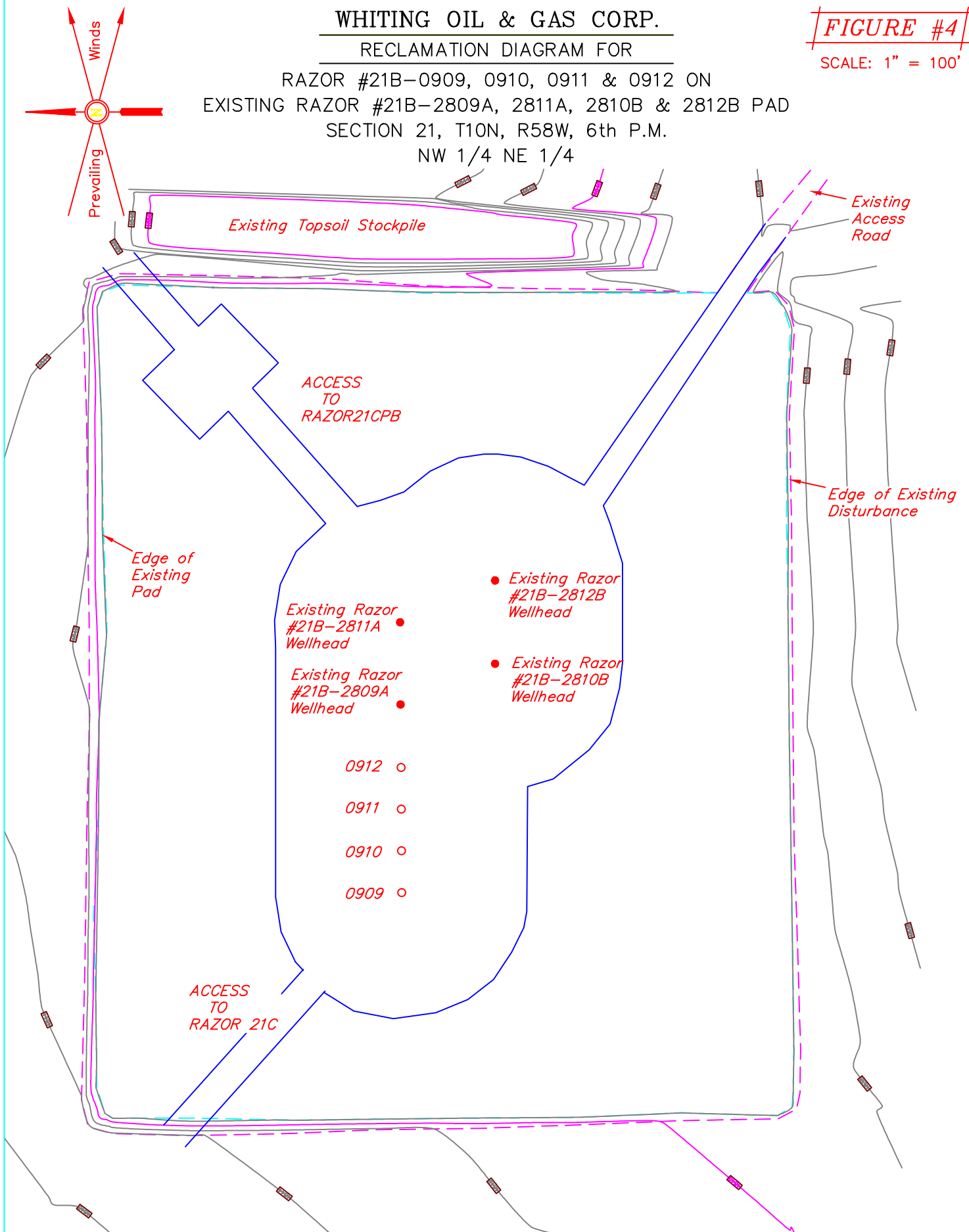
WHITING OIL & GAS CORP.

RECLAMATION DIAGRAM FOR

RAZOR #21B-0909, 0910, 0911 & 0912 ON
EXISTING RAZOR #21B-2809A, 2811A, 2810B & 2812B PAD
SECTION 21, T10N, R58W, 6th P.M.
NW 1/4 NE 1/4

FIGURE #4

SCALE: 1" = 100'



APPROXIMATE ACREAGE
UN-RECLAIMED = ± 2.29 ACRES

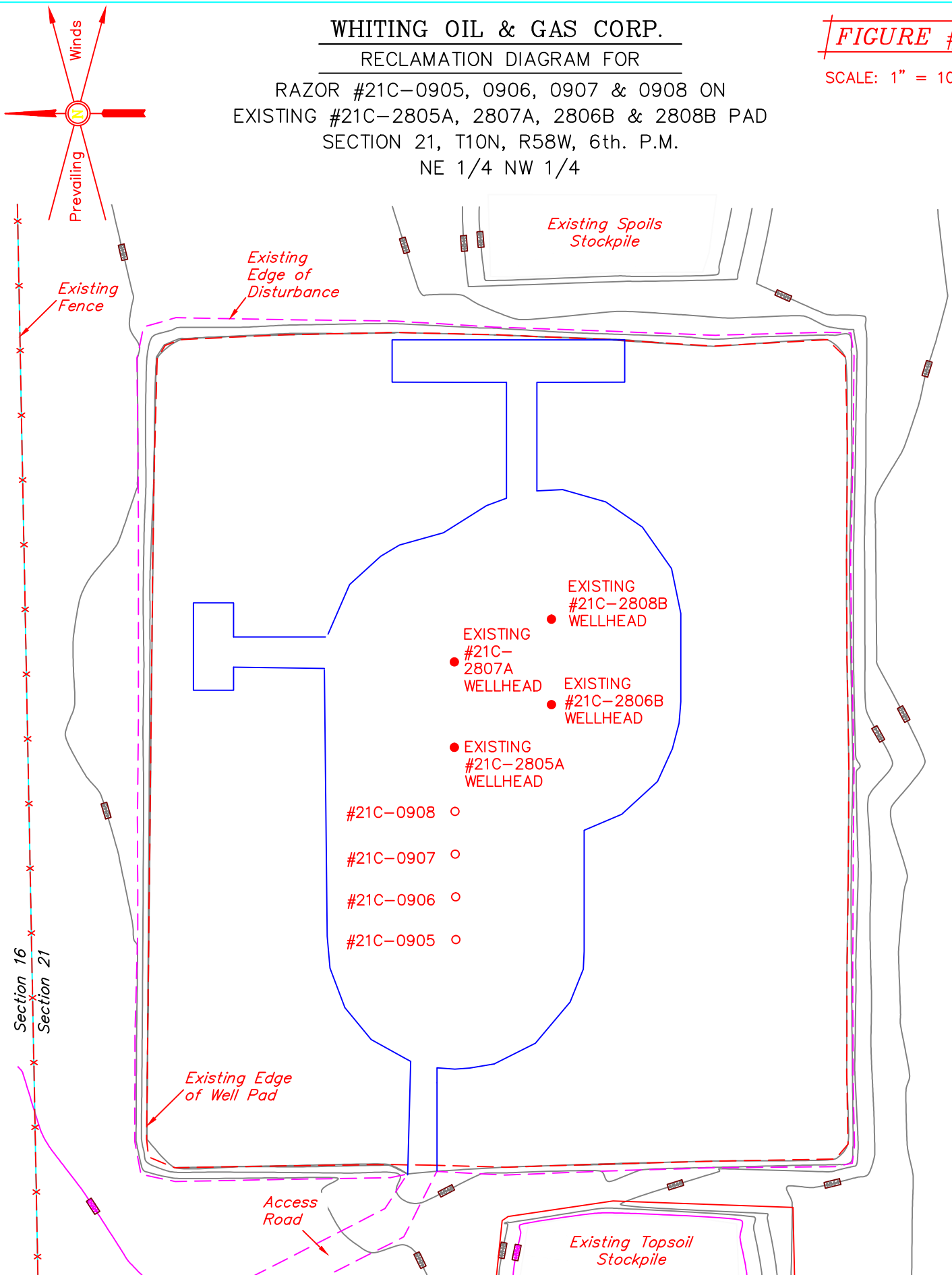
WHITING OIL & GAS CORP.

RECLAMATION DIAGRAM FOR

RAZOR #21C-0905, 0906, 0907 & 0908 ON
EXISTING #21C-2805A, 2807A, 2806B & 2808B PAD
SECTION 21, T10N, R58W, 6th. P.M.
NE 1/4 NW 1/4

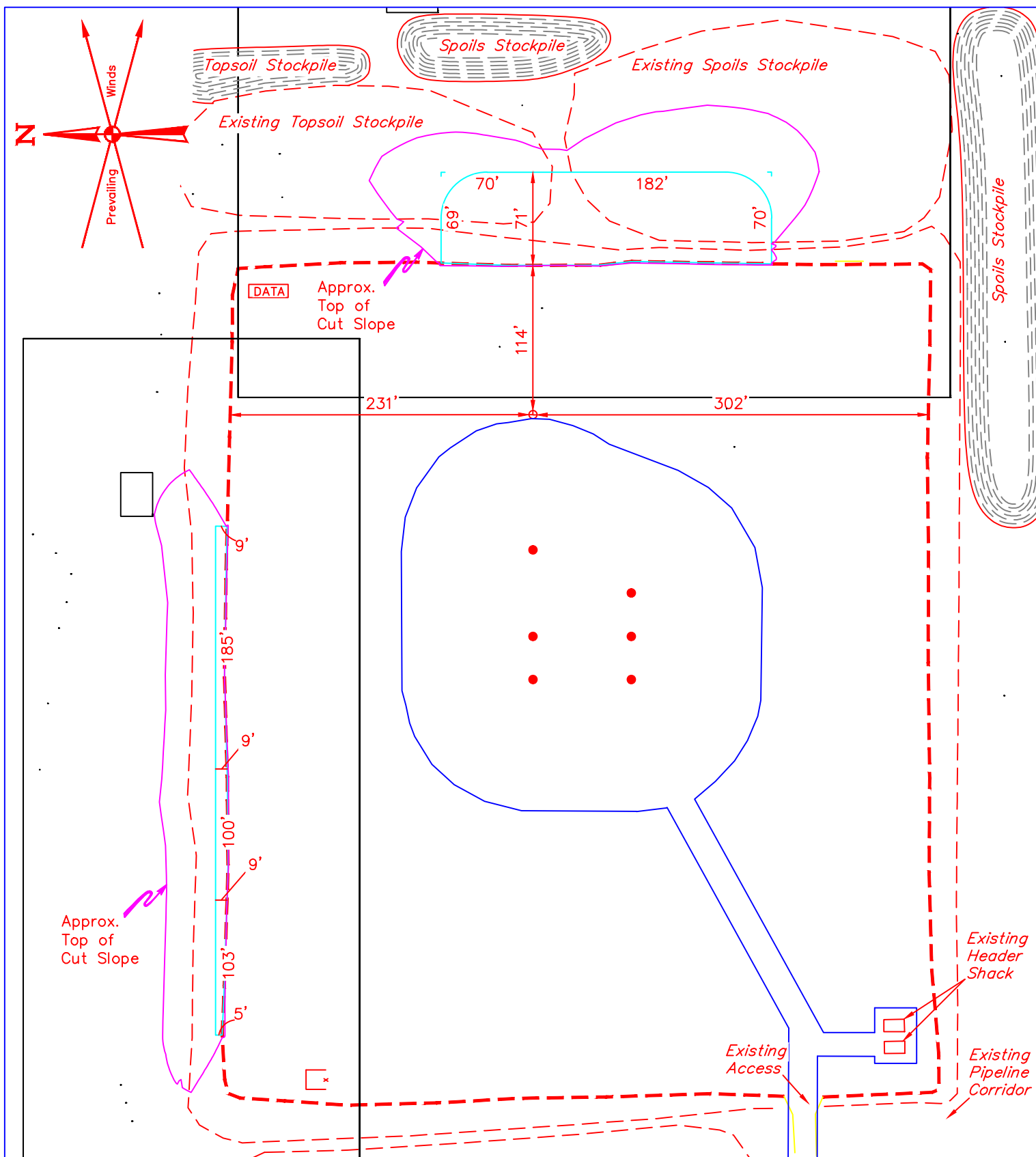
FIGURE #4

SCALE: 1" = 100'



APPROXIMATE ACREAGE

UN-RECLAIMED = ± 2.8 ACRES

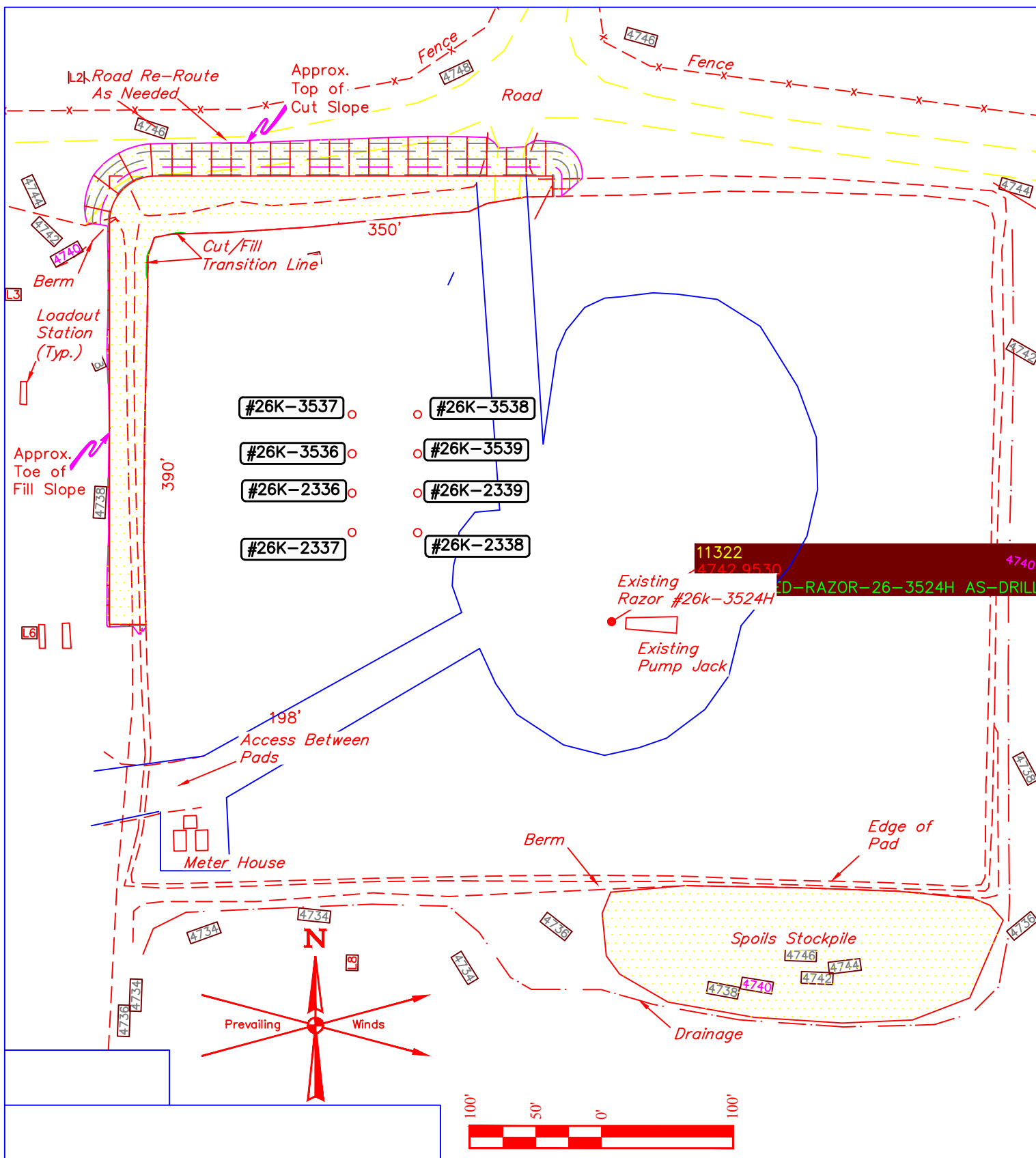


WHITING OIL & GAS CORP.

RAZOR #261-2345, 2344, 2346, 2347 & 2348, RAZOR FED #261-3544, 3545, 3547 & 3546 ON EXISTING RAZOR FEDERAL #261-3513A, 3514B, RAZOR #261-2313A, 2315A, 2314B & 2316B
NE 1/4 SE 1/4, SECTION 26, T10N, R58W, 6th P.M.
WELD COUNTY, COLORADO

APPROXIMATE ACREAGE
UN-RECLAIMED = ± 1.8 ACRES

SCALE: 1" = 100'



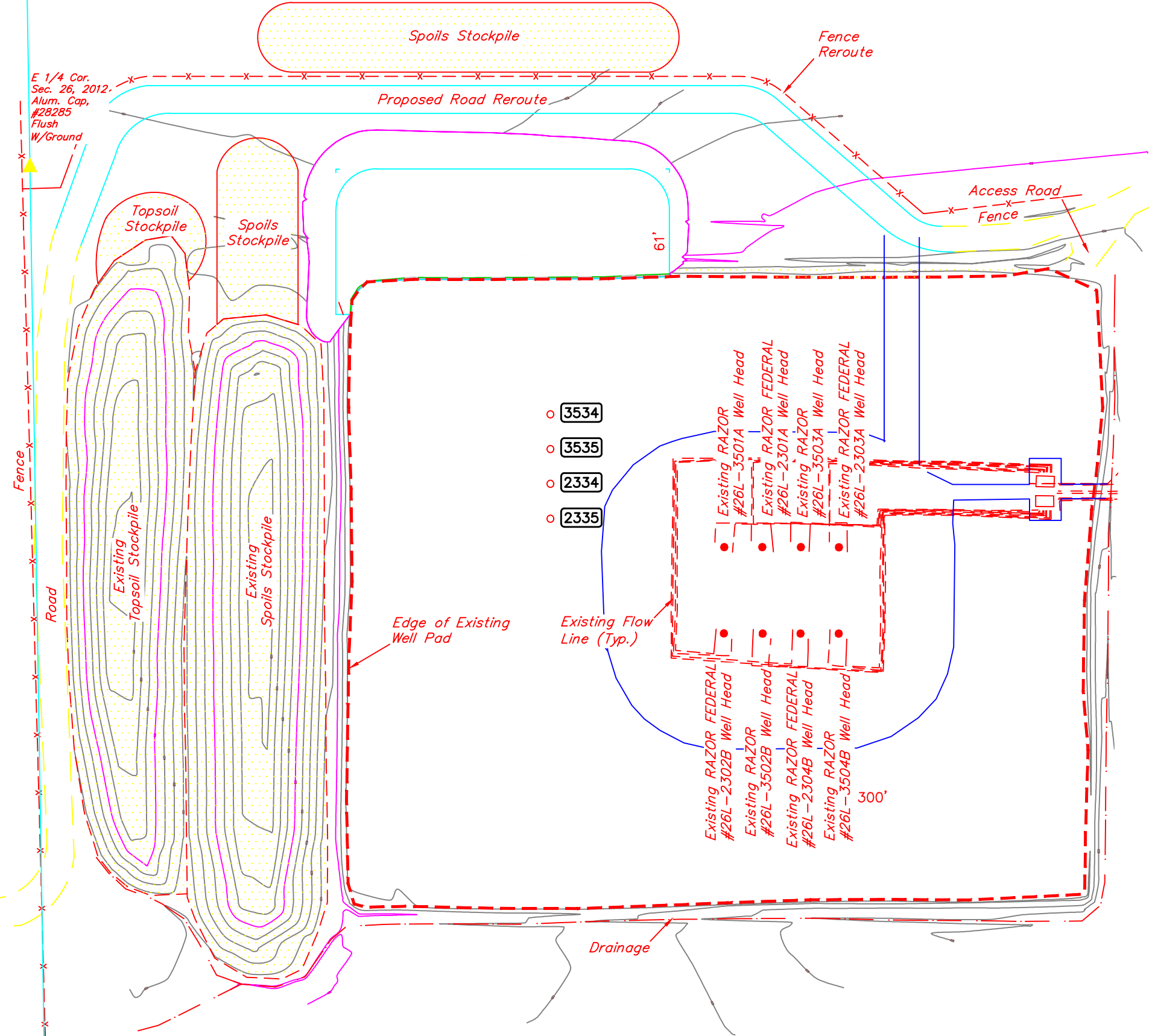
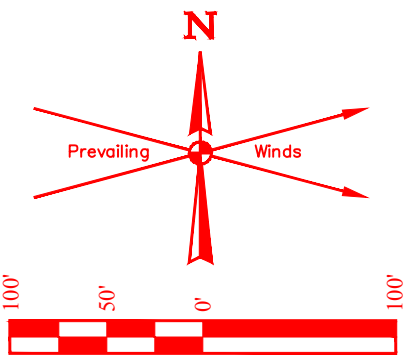
WHITING OIL & GAS CORP.

**RAZOR #26K-2338, 2339, 3539, 3538, 2337, 2336, 3536 & 3537
ON EXISTING RAZOR #26-3524H
NE 1/4 SW 1/4 SECTION 26, T10N, R58W, 6th P.M.
WELD COUNTY, COLORADO**

APPROXIMATE ACREAGE
UN-RECLAIMED = ± 2.6 ACRES

SCALE: 1" = 100'

Section 27
Section 26



WHITING OIL & GAS CORP.

RAZOR FED #26L-2335, 2334, RAZOR #26L-3535 & 3534
ON EXISTING RAZOR #26L-3501A, 3503A, 3502B, 3504B,
RAZOR FEDERAL #26L-2301A, 2303A, 2302B & 2304B PAD
NW 1/4 SW 1/4, SECTION 26, T10N, R58W, 6th P.M.
WELD COUNTY, COLORADO

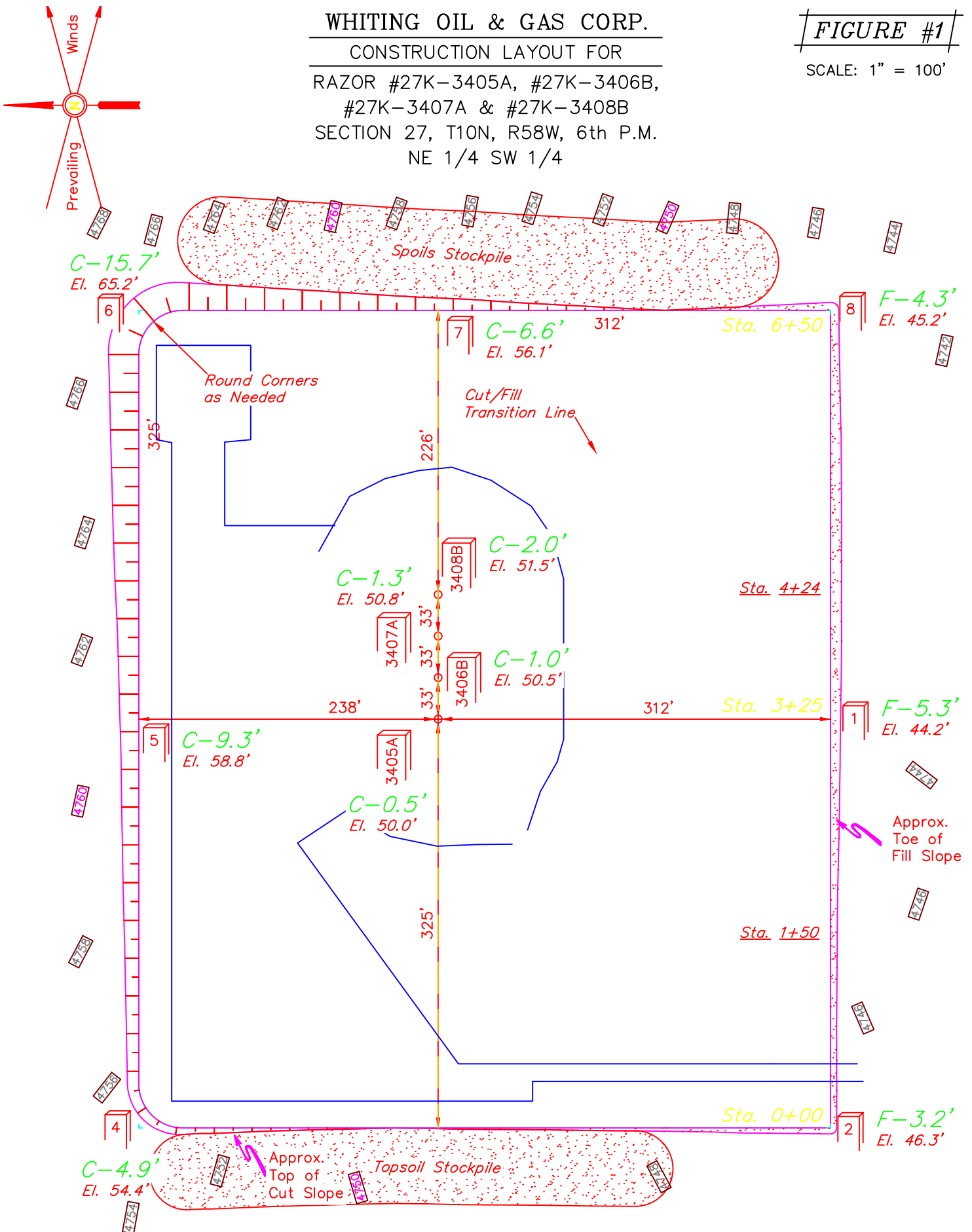
APPROXIMATE ACREAGE
UN-RECLAIMED = ± 2.8 ACRES

SCALE: 1" = 100'

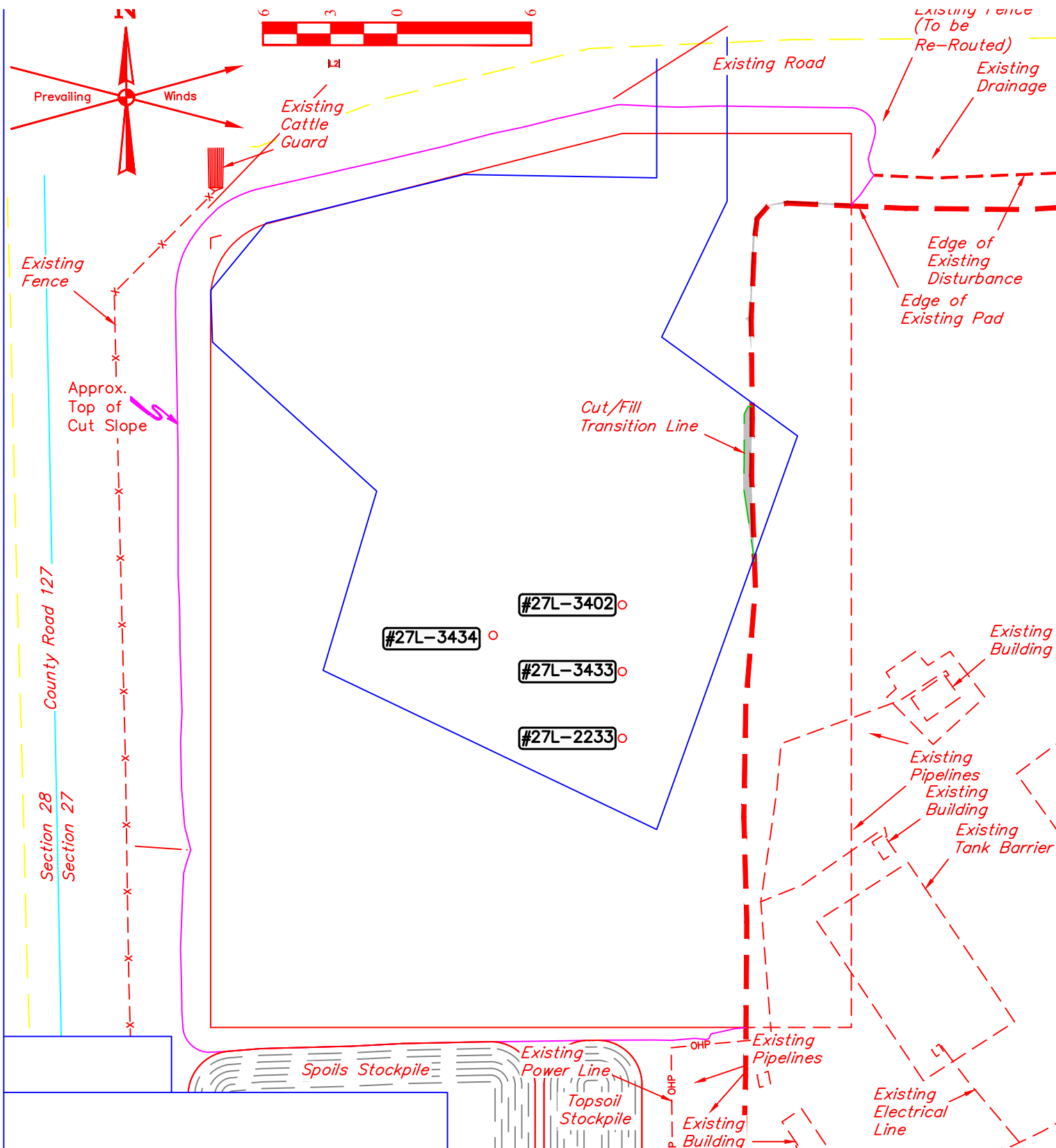
WHITING OIL & GAS CORP.
 CONSTRUCTION LAYOUT FOR
 RAZOR #27K-3405A, #27K-3406B,
 #27K-3407A & #27K-3408B
 SECTION 27, T10N, R58W, 6th P.M.
 NE 1/4 SW 1/4

FIGURE #1

SCALE: 1" = 100'



APPROXIMATE ACREAGE
 UN-RECLAIMED = ± 1.4 ACRES



WHITING OIL & GAS CORP.

**RAZOR #27L-2234, 2201, 2233, 3433, 3402 & 3434
ON EXISTING RAZOR 27L-3401B, 3403B, 3404B
& 3414H PAD**

**NW 1/4 SW 1/4, SECTION 27, T10N, R58W, 6th P.M.
WELD COUNTY, COLORADO**

APPROXIMATE ACREAGE
UN-RECLAIMED = ± 1.5 ACRES

SCALE: 1" = 100'