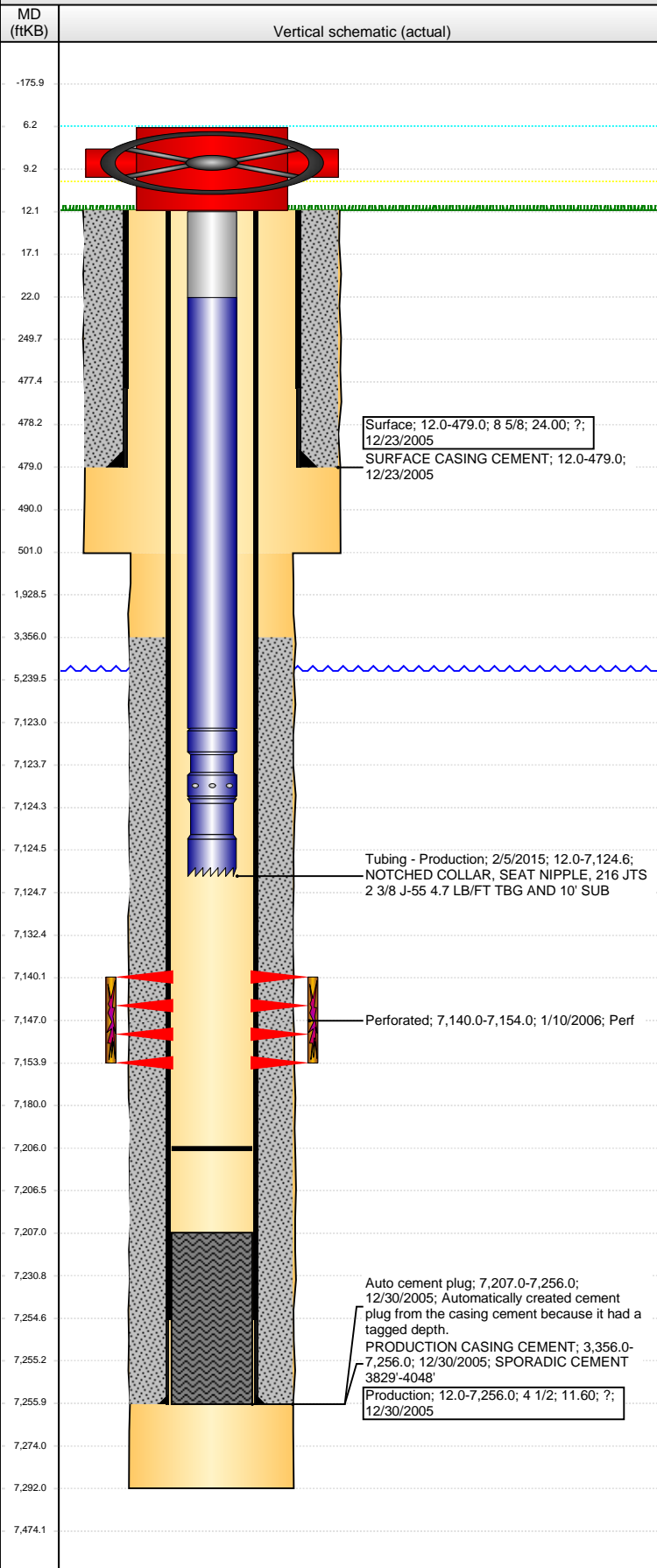


Well Name: KASTNER 41-03

VERTICAL - ORIGINAL HOLE, 3/22/2016 2:06:00 PM



Well Header

API 05-123-23386	Business Unit DJ BASIN	District 15	Well Config VERTICAL
Original KB Elevation (ft) 4,855	KB - GL / MSL (ftKB) 12.00	Spud Date 12/22/2005	P & A Date

Comment

PROD CSG SET DEPTH DISCREPANCY: STATE/WORKOVER REPORTS @ 7256', DRILLING RPT @ 7272'.

Directions To Well

WCR 45 AND 74, WEST 5/10, SOUTH ON THE EAST SIDE OF THE HOUSE 1/10 TO BATTER, EAST THROUGH TANK BATTERY 3/10 INTO.

Congressional Location

Quarter 1	Quarter 2	Quarter 3	Quarter 4	Section	Township	Twnshp N...	Range	Rng E/W Dir
		NE	NE	3	6	N	65	W

Bottom Hole Location

North-South Distance (ft)	From N or S Line	East-West Distance (ft)	From E or W Line

Plug Back Total Depths

Date	Depth (ftKB)	Method	Com
1/9/2005	7,207.0	CASED HOLE LOG	DEPTH LOGGER ON CBL
12/30/2005	7,254.0	CASING TALLY	TOP OF FLOAT COLLAR
7/23/2007	7,207.0	TAG	CLEAN OUT TO 7207'
2/5/2015	7,206.0	TAG	TAG, 88.59' OF TBG 52' OF RAT HOLE, DID NOT C/O

Wellbore Sections

Section Des	Size (in)	Act Top, MD (ftKB)	Act Btm, MD (ftKB)
SURFACE	12 1/4	12.0	501.0
PRODUCTION	7 7/8	501.0	7,292.0

Zone Statuses

Zone Name	Status Date	Status	Fluid Type	Job	Prod Method
CODELL	2/27/2006	PR	Oil	DRILLING/CO...	

Casing Strings

Surface, 479.0ftKB

Casing Description	Run Date	OD (in)	Wt/Len (l...)	Grade	Top, MD (ft...)	MD (ftKB)
Surface	12/23/2005	8 5/8	24.00	?	12.0	479.0

Production, 7,256.0ftKB

Casing Description	Run Date	OD (in)	Wt/Len (l...)	Grade	Top, MD (ft...)	MD (ftKB)
Production	12/30/2005	4 1/2	11.60	?	12.0	7,256.0

Cement

Description	Top Depth (ftKB)	Bottom Depth (ftKB)
SURFACE CASING CEMENT	12.0	479.0
Description	Top Depth (ftKB)	Bottom Depth (ftKB)
PRODUCTION CASING CEMENT	3,356.0	7,256.0

Tubing Strings

Tubing Description	Run Date	String...	ID (in)	Wt (lb/ft)	Grade	Len (ft)	Set De...
Tubing - Production	7/23/2007	2 3/8	1.995	4.70	J-55	7,116.00	
Tubing Description	Run Date	String...	ID (in)	Wt (lb/ft)	Grade	Len (ft)	Set De...
Tubing - Production	2/5/2015	2 3/8	1.995	4.70	J-55	7,112.59	

Tubing Components

Item Des	OD (in)	Wt (lb/ft)	Grade	Jts	Len (ft)	Btm (ftKB)	Btm (TVD) (ftKB)
Tubing Pup Joint	2 3/8	4.70	J-55	1	10.00	22.0	
EUE 8rd Tubing	2 3/8	4.70	J-55	216	7,101.09	7,123.1	
Pump Seating Nipple	2 3/8			1	1.10	7,124.2	
Notched collar	2 3/8			1	0.40	7,124.6	

Perforation Data

Zone	Bnch/St g	Entered Shot Total	Top (ftKB)	Btm (ftKB)	Date
CODELL, ORIGINAL HOLE		56	7,140.00	7,154.00	1/10/2006

Stimulations & Treatments

Date	Zone	Primary Job Type
1/11/2006	CODELL, ORIGINAL HOLE	DRILLING/COMPLETION - ORIGINAL
Technical Result	Tech Result Details	Tech Result Note

Comment

Well Name: KASTNER 41-03

VERTICAL - ORIGINAL HOLE, 3/22/2016 2:06:03 PM

Other In Hole

Run Date	Des	OD (in)	Top (ftKB)	Btm (ftKB)

Logs

Date	Type	Top, MD (ftKB)	Btm, MD (ftKB)
12/29/2005	TRIPLE COMBO	479.0	7,294.0
1/9/2006	CEMENT BOND	3,100.0	7,202.0
2/3/2015	GYRO	10.0	7,050.0

