

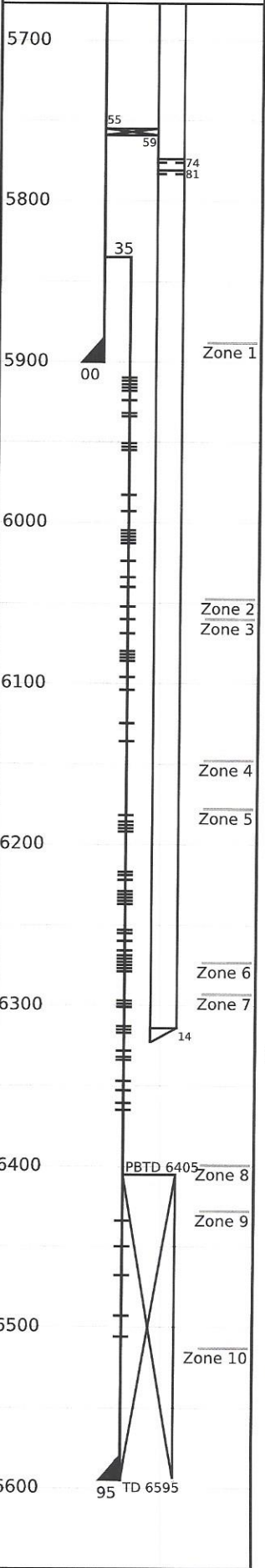
Well: Emerald 14 (2229)  
Field: Rangley, Co.

Survey Data 05-103-05565 Remarks

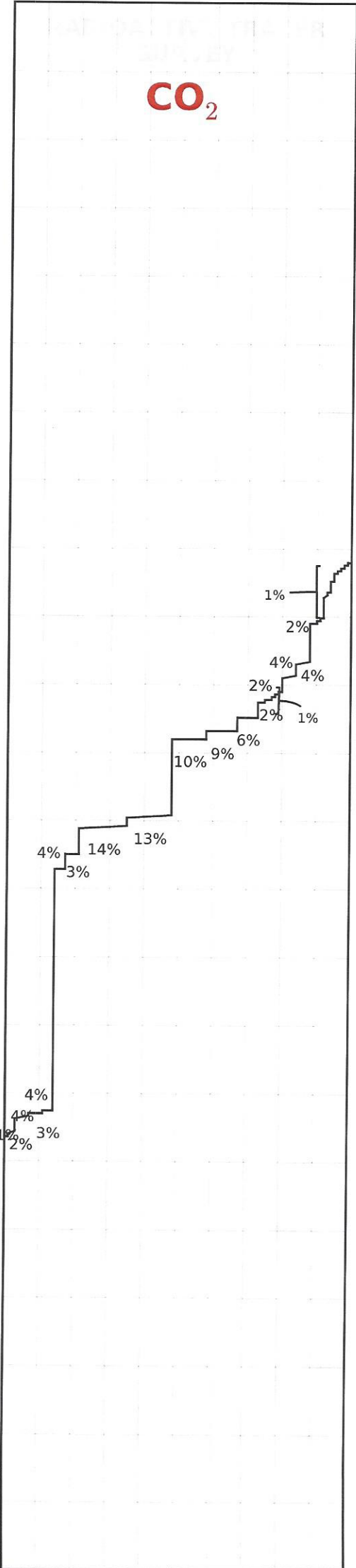
Run No.23		R/A Tracer indicates top perf and packer O.K.     Recorded By: J.R. Hacking
Survey Type: T-S-T	Surface Temp: 72.7 °F	
Date: 02/22/2016	BHT: 134.0 °F	
Metered Rate: 1430 mcf/d	TBG Pressure: 2100 PSI	
Measured Rate: 713 B/D	CSG Pressure: 0 PSI	
Desired Rate: N/A	Pick Up: 6340' TDL	
Service Co: PLS	Inj. Fluid: CO <sub>2</sub>	

Mechanical Information

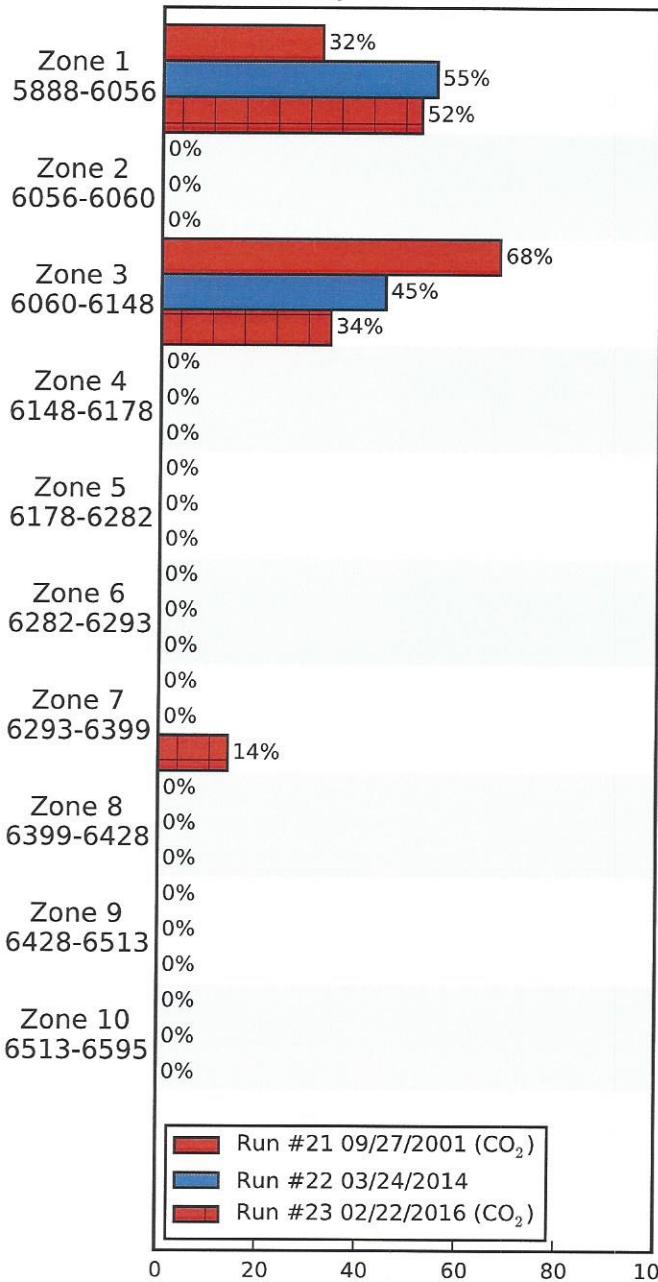
7" 23# Casing	0'-5900'
5" 18# Liner	5835'-6595'
P.B.T.D	6405'
2-7/8" Duoline Tubing	0'-5755'
Packer	5755'-5759'
Mill Out Extension	5759'-5765'
2-3/8" Tubing Sub	5765'-5773'
1.875 "F" Nipple	5773'-5774'
2-3/8" Tubing Sub	5774'-5780'
1.875" "X" Nipple	5780'-5781'
2-3/8" F.G. Tubing	5781'-6314'
Mule Shoe	6315'
	O-11 "B"



0% 50% 100%



(%) Injected Into Zone



Average Temperature (°F)

	Run #21 09/27/2001	Run #22 03/24/2014	Run #23 02/22/2016
Surface	81.7	105.4	72.7
5888-6056	--	--	6013
6056-6060	--	--	--
6060-6148	--	--	--
6148-6178	--	--	--
6178-6282	--	--	--
6282-6293	--	--	--
6293-6399	--	--	--
TDL (6340)	130.2	119.1	134.0
6399-6428	--	--	--
6428-6513	--	--	--
6513-6595	--	--	--
Rate (B/D)	1600	537	713
Press (PSI)	2100	1450	2100