

Run No.6

Survey Type: T-S-T Surface Temp: 40.6 °F  
Date: 02/18/2016 BHT: 140.8 °F  
Metered Rate: N/A TBG Pressure: 1900 PSI  
Measured Rate: 2165 B/D CSG Pressure: 0 PSI  
Desired Rate: N/A Pick Up: 6330' TDL  
Service Co: PLS Inj. Fluid: CO<sub>2</sub>

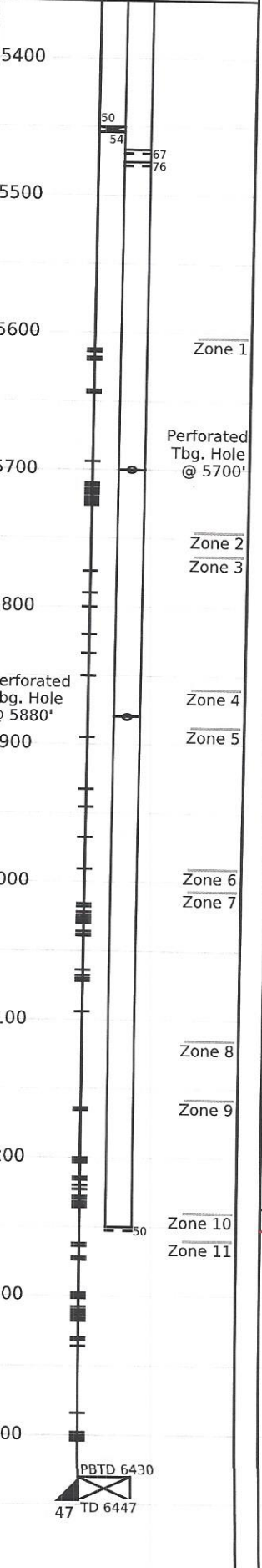
R/A Tracer indicates top perf and packer O.K.

Recorded By: J.R. Hacking

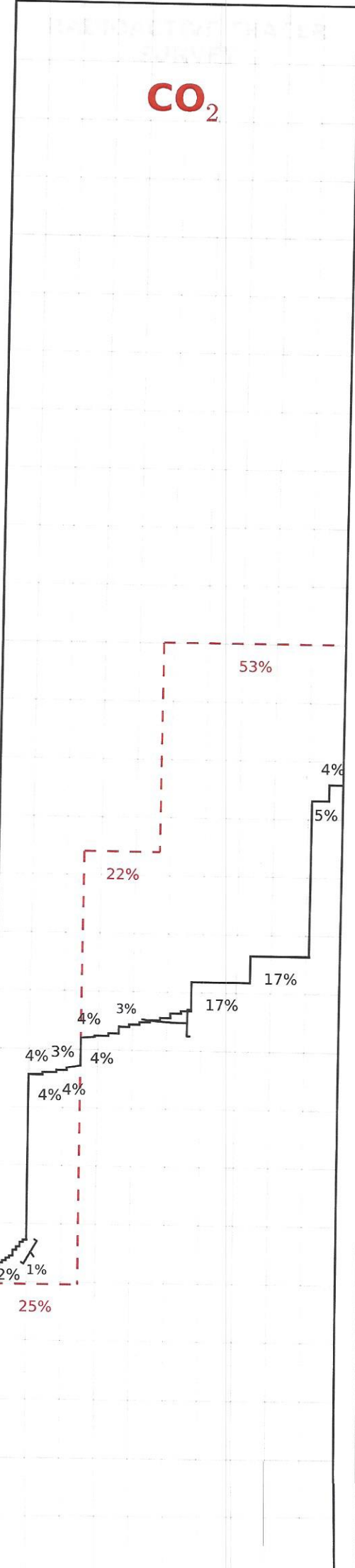
Well: Carney 27X-34 (5332)  
Field: Rangley, Co.

Mechanical Information

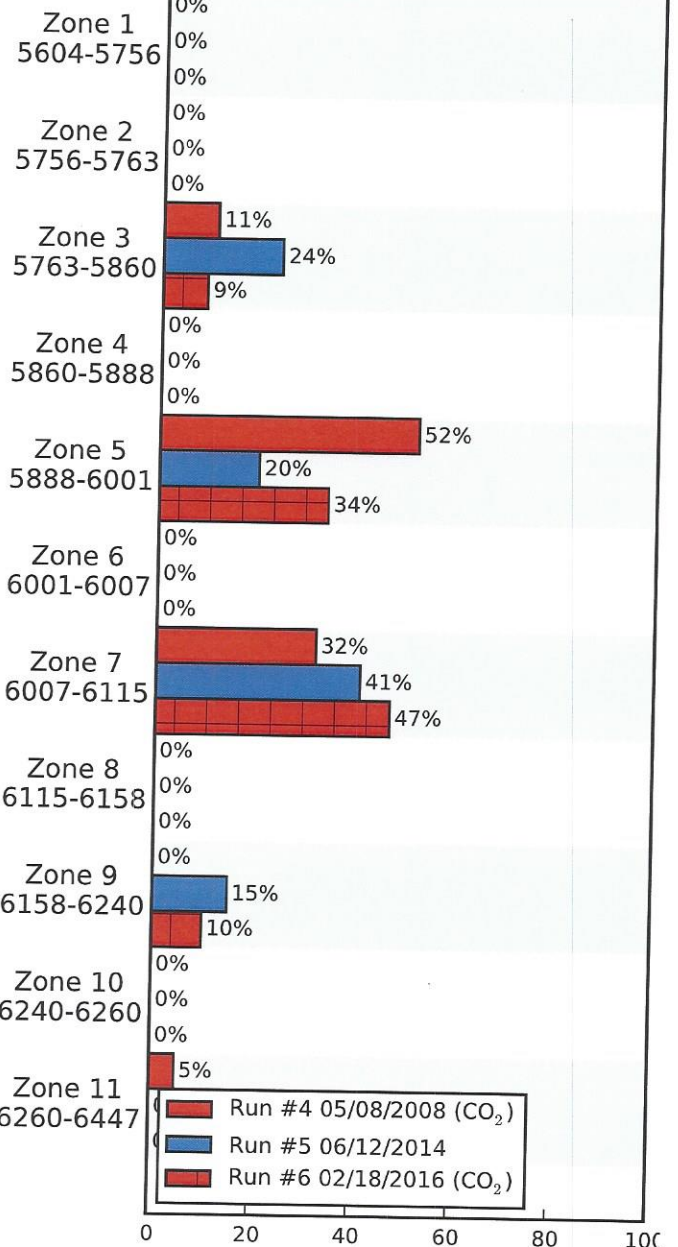
7" 23# Casing 0'-6447'  
P.B.T.D 6430'  
2-7/8" D.L Tubing 0'-5450'  
Packer 5450'-5454'  
Mill Out Extension 5454'-5460'  
2-3/8" Tubing Sub 5460'-5466'  
1.875 "F" Nipple 5466'-5467'  
2-3/8" Tubing Sub 5467'-5475'  
1.875 "X" Nipple 5475'-5476'  
Tubing Hole 5700'  
Tubing Hole 5880'  
2-3/8" Star F.G. Tubing 5476'-6249'  
1.81" "R" Nipple 6249'-6250'



0% 50% 100%



(%) Injected Into Zone



Average Temperature (°F)

	Run #4 05/08/2008	Run #5 06/12/2014	Run #6 02/18/2016
Surface	--	96.3	40.6
5604-5756	--	--	--
5756-5763	--	--	--
5763-5860	--	--	--
5860-5888	--	--	--
5888-6001	--	--	--
6001-6007	--	--	--
6007-6115	--	--	--
6115-6158	--	--	--
6158-6240	--	--	--
6240-6260	--	--	--
6260-6447	--	--	--
TDL (6330)	152.0	157.7	140.8
Rate (B/D)	645	1410	2165
Press (PSI)	1250	1750	1900