

WPX Energy Rocky Mountain LLC-EBUS

RU 341-7

**Nabors 574**

## **Post Job Summary**

# **Cement Surface Casing**

Date Prepared: 01/09/2015  
Job Date: 01/03/2015

Submitted by: Keven Nye – Grand Junction Cement Engineer

## The Road to Excellence Starts with Safety

Sold To #: 300721	Ship To #: 3356180	Quote #: 0021979485	Sales Order #: 0901996793
Customer: WPX ENERGY ROCKY MOUNTAIN LLC-EBUS		Customer Rep:	
Well Name: YOUNBERG		Well #: RU 341-7	API/UWI #: 05-045-22344-00
Field: RULISON	City (SAP): RIFLE	County/Parish: GARFIELD	State: COLORADO
Legal Description: SE NE-7-7S-93W-2445FNL-379FEL			
Contractor: NABORS DRLG		Rig/Platform Name/Num: NABORS 574	
Job BOM: 7521			
Well Type: DIRECTIONAL GAS			
Sales Person: HALAMERICA\HB50180		Srv Supervisor: A.Brennecke	

### Job

Formation Name	
Formation Depth (MD)	Top
Form Type	BHST
Job depth MD	1134ft
Water Depth	Wk Ht Above Floor 3
Perforation Depth (MD)	From To

### Well Data

Description	New / Used	Size in	ID in	Weight lbm/ft	Thread	Grade	Top MD ft	Bottom MD ft	Top TVD ft	Bottom TVD ft
Casing		9.625	9.001	32.3			0	1134		0
Open Hole Section			13.5				0	1135		0

### Tools and Accessories

Type	Size in	Qty	Make	Depth ft	Type	Size in	Qty	Make
Guide Shoe	9.625	1		1134	Top Plug	9.625	1	HES
Float Shoe					Bottom Plug			
Float Collar	9.625	1		1087.41	SSR plug set			
Insert Float					Plug Container	9.625	1	HES
Stage Tool					Centralizers	9.625		

### Miscellaneous Materials

Gelling Agt	Conc	Surfactant	Conc	Acid Type	Qty	Conc
Treatment Fld	Conc	Inhibitor	Conc	Sand Type	Size	Qty

### Fluid Data

Stage/Plug #: 1										
Fluid #	Stage Type	Fluid Name	Qty	Qty UoM	Mixing Density lbm/gal	Yield ft3/sack	Mix Fluid Gal	Rate bbl/min	Total Mix Fluid Gal	
1	Fresh Water	Fresh Water	20	bbl	8.34			4		
Fluid #	Stage Type	Fluid Name	Qty	Qty UoM	Mixing Density lbm/gal	Yield ft3/sack	Mix Fluid Gal	Rate bbl/min	Total Mix Fluid Gal	
2	VariCem GJ1	VARICEM (TM) CEMENT	130	sack	12.3	2.38		8	13.77	

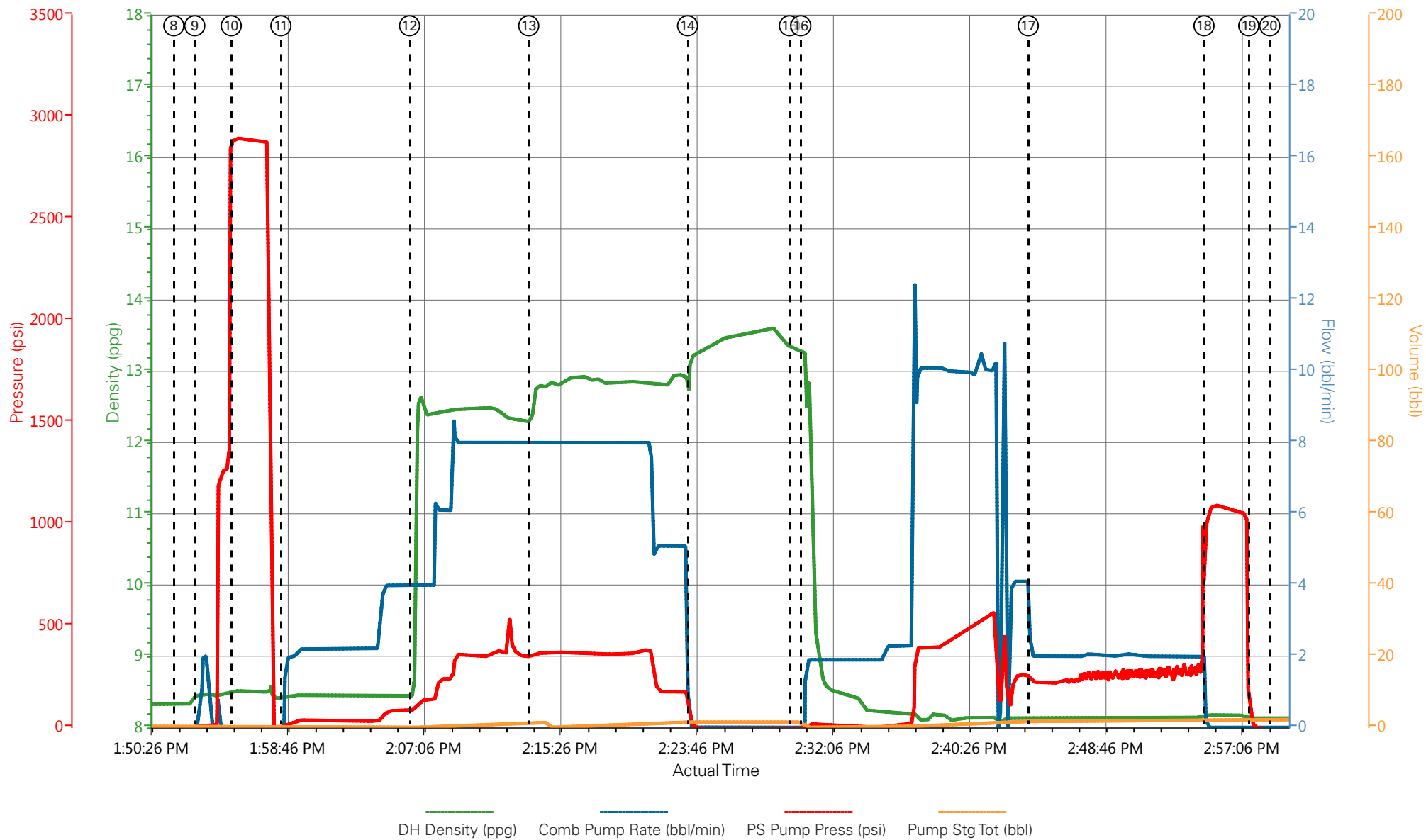
13.70 Gal		FRESH WATER							
Fluid #	Stage Type	Fluid Name	Qty	Qty UoM	Mixing Density lbm/gal	Yield ft3/sack	Mix Fluid Gal	Rate bbl/min	Total Mix Fluid Gal
3	VariCem GJ1	VARICEM (TM) CEMENT	175	sack	12.8	2.11		8	11.77
11.71 Gal		FRESH WATER							
Fluid #	Stage Type	Fluid Name	Qty	Qty UoM	Mixing Density lbm/gal	Yield ft3/sack	Mix Fluid Gal	Rate bbl/min	Total Mix Fluid Gal
4	Fresh Water Displacement	Fresh Water Displacement	85.6	bbl	8.34			10	
Cement Left In Pipe		Amount	47 ft		Reason		Shoe Joint		
Comment									

## 1.1 Job Event Log

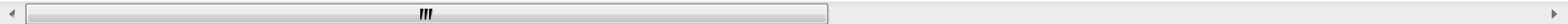
Type	Seq. No.	Activity	Graph Label	Date	Time	Source	DH Density (ppg)	Comb Pump Rate (bbl/min)	PS Pump Press (psi)	Pump Stg Tot (bbl)	Comment
Event	1	Call Out	Call Out	1/3/2015	06:00:00	USER					
Event	2	Pre-Convoy Safety Meeting	Pre-Convoy Safety Meeting	1/3/2015	08:45:00	USER					ALL HES PRESENT
Event	3	Crew Leave Yard	Crew Leave Yard	1/3/2015	09:00:00	USER					
Event	4	Arrive At Loc	Arrive At Loc	1/3/2015	11:45:00	USER					RIG HAD RAN CASING AND WAITING
Event	5	Pre-Rig Up Safety Meeting	Pre-Rig Up Safety Meeting	1/3/2015	12:29:45	USER					ALL HES PRESENT
Event	6	Rig-Up Completed	Rig-Up Completed	1/3/2015	12:29:53	USER					1-ELITE, 1-660 BULK TRAILER, 9.625" QUICK LATCH PLUG CONTAINER, 2" PUMP IRON, 4" SUCTION HOSE
Event	7	Pre-Job Safety Meeting	Pre-Job Safety Meeting	1/3/2015	12:29:58	USER					ALL HES AND RIG CREW PRESENT
Event	8	Start Job	Start Job	1/3/2015	13:52:00	USER	8.33	0.00	0.00	0.00	TD-1135', TP-1134', SJ-46.59', OH-13.5", MUD-10.3PPG, CSG-9.625", 32.3#
Event	9	Prime Pumps	Prime Pumps	1/3/2015	13:53:16	COM5	8.40	2.00	33.00	2.0	FRESH WATER
Event	10	Test Lines	Test Lines	1/3/2015	13:55:30	COM5	8.41	.30	2910.00	2.2	ALL PRESSURE HELD ON LINES
Event	11	Pump Spacer 1	Pump Spacer 1	1/3/2015	13:58:32	COM5	8.41	4.00	106.00	20.0	20 BBL FRESH WATER
Event	12	Pump Lead Cement	Pump Lead Cement	1/3/2015	14:06:24	COM5	12.30	8.00	470.00	55.1	130SK / 12.3PPG / 2.38CSK / 13.77GSK
Event	13	Pump Tail Cement	Pump Tail Cement	1/3/2015	14:13:41	COM5	12.80	8.00	400.00	65.8	175SK / 12.8PPG / 2.11CSK / 11.77GSK
Event	14	Shutdown	Shutdown	1/3/2015	14:23:24	USER					
Event	15	Drop Top Plug	Drop Top Plug	1/3/2015	14:29:38	USER					PLUG DROP VERIFIED BY TATTLE TAIL
Event	16	Pump Displacement	Pump Displacement	1/3/2015	14:30:19	COM5	8.40	10.00	590.00	75.6	FRESH WATER
Event	17	Slow Rate	Slow Rate	1/3/2015	14:44:14	USER	8.40	2.00	212.30	10.0	SLOWED RATE EARLY DUE TO WRONG PIPE TALLY

Event	18	Bump Plug	Bump Plug	1/3/2015	14:54:58	COM5	8.40	0.00	380.00	85.6	PLUG BUMPED
Event	19	Check Floats	Check Floats	1/3/2015	14:57:42	USER	8.40	0.00	1081.00	85.6	FLOATS HELD, ½ BBL BACK TO DISPLACEMENT TANK, GOOD CIRCULATION THROUGHOUT JOB, 30 BBL CEMENT TO SURFACE, THANK YOU FOR CHOOSING HALLIBURTON, ANDREW BRENNECKE AND CREW
Event	20	End Job	End Job	1/3/2015	14:59:00	COM5	8.40	0.00	0.00	0.0	

# WPX - RU 341-7 - 9.625" SURFACE



- |   |                                   |   |  |                                 |   |
|---|-----------------------------------|---|--|---------------------------------|---|
| ① Call Out n/a;n/a;n/a;n/a                  | ③ Crew Leave Yard n/a;n/a;n/a;n/a | ⑤ Pre-Rig Up Safety Meeting n/a;n/a;n/a;n/a | ⑦ Pre-Job Safety Meeting n/a;n/a;n/a;n/a | ⑨ Prime Pumps 8.45;0.8;5.3;0    | ⑪ |
| ② Pre-Convoy Safety Meeting n/a;n/a;n/a;n/a | ④ Arrive At Loc n/a;n/a;n/a;n/a   | ⑥ Rig-Up Completed n/a;n/a;n/a;n/a          | ⑧ Start Job 8.33;0;-1.7;0.29             | ⑩ Test Lines 8.52;0;2893.3;0.03 | ⑫ |



▼ **HALLIBURTON** | iCem® Service

Created: 2015-01-03 12:27:48, Version: 3.0.148

Edit

Customer: WPX ENERGY ROCKY MOUNTAIN LLC-EBUS

Job Date: 1/3/2015 1:12:58 PM

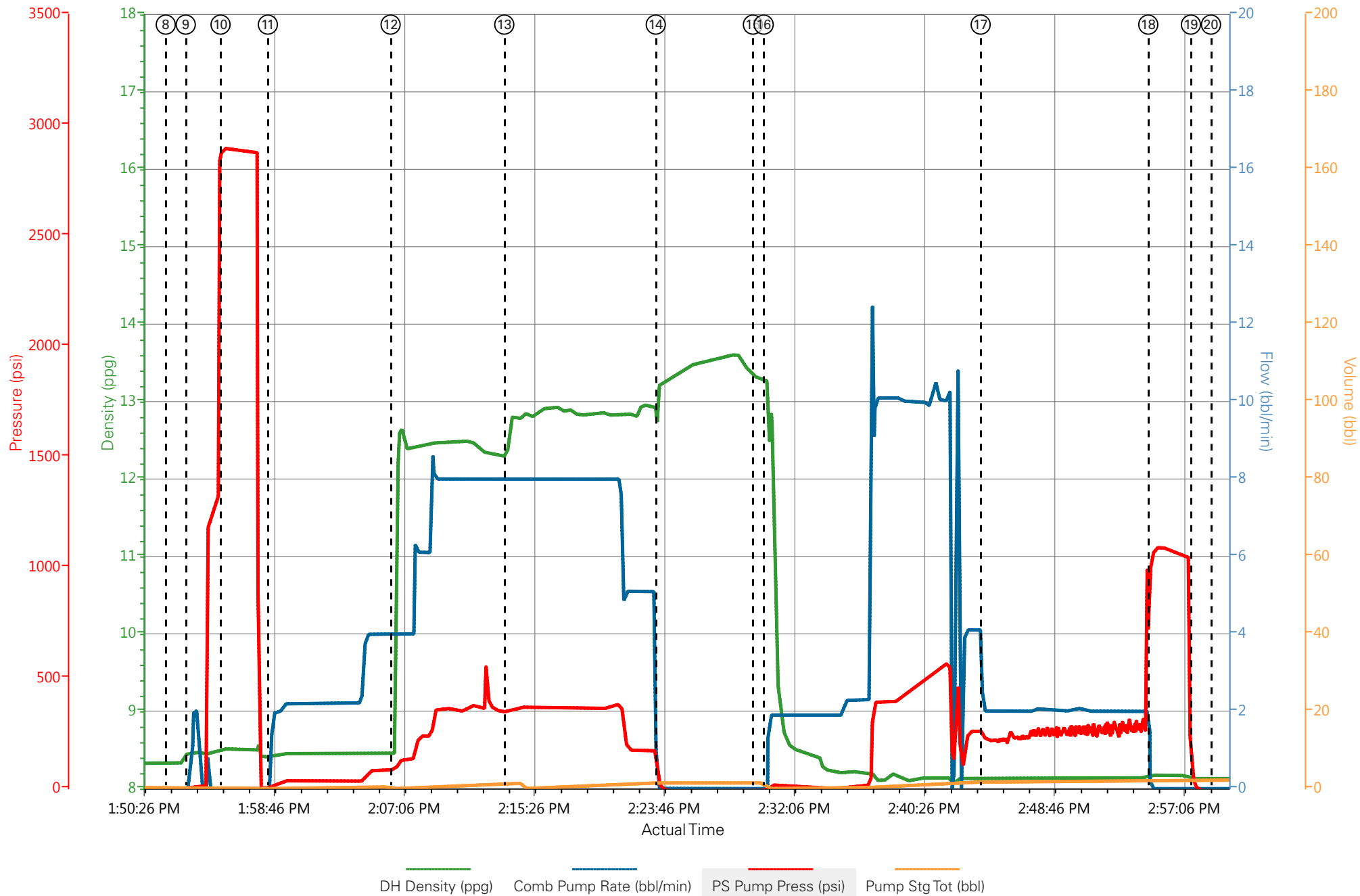
Well: RU 341-7

Representative: MATT HUDSON

Sales Order #: 901996793

ELITE#4: A.BRENNECKE/S.WARDELL

# WPX - RU 341-7 - 9.625" SURFACE



# HALLIBURTON

## Water Analysis Report

Company: WPX

Submitted by: A.BRENNECKE

Attention: E.RUSSEL

Lease: RU

Well #: 341-7

Date: 1/3/2015

Date Rec.: 1/3/2015

S.O.#: 901996793

Job Type: SURFACE

Specific Gravity	<i>MAX</i>	<b>1</b>
pH	<i>8</i>	<b>7</b>
Potassium (K)	<i>5000</i>	<b>200</b> Mg / L
Calcium (Ca)	<i>500</i>	<b>120</b> Mg / L
Iron (FE2)	<i>300</i>	<b>0</b> Mg / L
Chlorides (Cl)	<i>3000</i>	<b>0</b> Mg / L
Sulfates (SO <sub>4</sub> )	<i>1500</i>	<b>&lt;200</b> Mg / L
Chlorine (Cl <sub>2</sub> )		<b>0</b> Mg / L
Temp	<i>40-80</i>	<b>54</b> Deg
Total Dissolved Solids		<b>410</b> Mg / L

Respectfully: A.BRENNECKE

Title: CEMENTING SUPERVISOR

Location: Grand Junction, CO

NOTICE: This report is limited to the described sample tested. Any person using or relying on this report agrees that Halliburton shall not be liable for any loss or damage whether due to act or omission resulting from such report or its use.



<b>Sales Order #:</b> 0901996793	<b>Line Item:</b> 10	<b>Survey Conducted Date:</b> 1/3/2015
<b>Customer:</b> WPX ENERGY ROCKY MOUNTAIN LLC-EBUS		<b>Job Type (BOM):</b> CMT SURFACE CASING BOM
<b>Customer Representative:</b> M. HUTSON		<b>API / UWI: (leave blank if unknown)</b> 05-045-22344-00
<b>Well Name:</b> YOUBERG		<b>Well Number:</b> 0080456564
<b>Well Type:</b> DIRECTIONAL GAS	<b>Well Country:</b> USA	
<b>H2S Present:</b> No	<b>Well State:</b> COLORADO	<b>Well County:</b> GARFIELD

Dear Customer,

We hope that you were satisfied with the service quality of this job performed by Halliburton. It is the aim of our management and service personnel to deliver equipment and service of a standard unmatched in the service sector of the energy industry.

Please take the time to let us know if our performance met with your satisfaction. Please be as critical as possible to ensure we constantly improve our service. Your comments are of great value to us and are intended for the exclusive use of Halliburton.

### CUSTOMER SATISFACTION SURVEY

CATEGORY	CUSTOMER SATISFACTION RESPONSE	
Survey Conducted Date	The date the survey was conducted	1/3/2015
Survey Interviewer	The survey interviewer is the person who initiated the survey.	HB58348
Customer Participation	Did the customer participate in this survey? (Y/N)	Yes
Customer Representative	Enter the Customer representative name	M. HUTSON
HSE	Was our HSE performance satisfactory? Circle Y or N	Yes
Equipment	Were you satisfied with our Equipment? Circle Y or N	Yes
Personnel	Were you satisfied with our people? Circle Y or N	Yes
Customer Comment	Customer's Comment	

<b>CUSTOMER SIGNATURE</b>
---------------------------

<b>Sales Order #:</b> 0901996793	<b>Line Item:</b> 10	<b>Survey Conducted Date:</b> 1/3/2015
<b>Customer:</b> WPX ENERGY ROCKY MOUNTAIN LLC-EBUS		<b>Job Type (BOM):</b> CMT SURFACE CASING BOM
<b>Customer Representative:</b> M. HUTSON		<b>API / UWI: (leave blank if unknown)</b> 05-045-22344-00
<b>Well Name:</b> YOUBERG		<b>Well Number:</b> 0080456564
<b>Well Type:</b> DIRECTIONAL GAS	<b>Well Country:</b> USA	
<b>H2S Present:</b> No	<b>Well State:</b> COLORADO	<b>Well County:</b> GARFIELD

### KEY PERFORMANCE INDICATORS

General	
<b>Survey Conducted Date</b> The date the survey was conducted	1/3/2015

Cementing KPI Survey	
<b>Type of Job</b> Select the type of job. (Cementing or Non-Cementing)	0
<b>Select the Maximum Deviation range for this Job</b> What is the highest deviation for the job you just completed? This may not be the maximum well deviation.	Vertical
<b>Total Operating Time (hours)</b> Total Operating Hours Including Rig-up, Pumping, Rig-down. Enter in decimal format.	3
<b>HSE Incident, Accident, Injury</b> HSE Incident, Accident, Injury. This should be recordable incidents only.	No
<b>Was the job purpose achieved?</b> Was the job delivered correctly as per customer agreed design?	Yes
<b>Pumping Hours</b> Total number of hours pumping fluid on this job. Enter in decimal format.	1
<b>Type of Rig Classification Job Was Performed</b> Type Of Rig (classification) Job Was Performed On	Drilling Rig (Portable)
<b>Number Of JSAs Performed</b> Number Of Jsas Performed	5
<b>Was this a Primary Cement Job (Yes / No)</b> Primary Cement Job= Casing job, Liner job, or Tie-back job.	Yes
<b>Number of Unplanned Shutdowns</b> Unplanned shutdown is when injection stops for any period of time.	0
<b>Customer Non-Productive Rig Time (hrs)</b>	0

<b>Sales Order #:</b> 0901996793	<b>Line Item:</b> 10	<b>Survey Conducted Date:</b> 1/3/2015
<b>Customer:</b> WPX ENERGY ROCKY MOUNTAIN LLC-EBUS		<b>Job Type (BOM):</b> CMT SURFACE CASING BOM
<b>Customer Representative:</b> M. HUTSON		<b>API / UWI: (leave blank if unknown)</b> 05-045-22344-00
<b>Well Name:</b> YOUBERG		<b>Well Number:</b> 0080456564
<b>Well Type:</b> DIRECTIONAL GAS	<b>Well Country:</b> USA	
<b>H2S Present:</b> No	<b>Well State:</b> COLORADO	<b>Well County:</b> GARFIELD

Lost time due to Halliburton in the start, execution, or completion of an ordered service or product, or delays in a follow-on service. Enter in decimal format. 0 if none.	
<b>Was the non productive time or the unplanned shutdown caused by a problem with a piece of equipment?</b> Was the non productive time or the unplanned shutdown caused by a problem with a piece of equipment?	No
<b>Did We Run Wiper Plugs?</b> Did We Run Top And Bottom Casing Wiper Plugs?	Top
<b>If a top plug was run, was the plug bumped? (Yes/No/N/A)</b> If a top plug was run, was the plug bumped? (Yes/No/N/A)	Yes
<b>If applicable, was Halliburton float equipment used? (Yes/No/N/A)</b> If applicable, was Halliburton float equipment used? (Yes/No/N/A)	N/A
<b>If applicable, did the floats hold? (Yes/No/N/A)</b> If applicable, did the floats hold? (Yes/No/N/A)	Yes
<b>Mixing Density of Job Stayed in Designed Density Range (0-100%)</b> Density Range defined as +/- .20 ppg. Calculation: Total BBLs cement mixed at designed density divided by total BBLs of cement multiplied by 100	97
<b>Pump Rate (percent) of Job Stayed At Designed Pump Rate</b> Pump Rate range defined as +/- 1bbl/min. Calculation: Total BBLs of fluid pumped at the designed rate divided by Total BBLs of fluid pumped, multiplied by 100	98
<b>If applicable, were there returns throughout the job? (Yes/No/N/A)</b> If applicable, were there returns throughout the job? (Yes/No/N/A)	YES
<b>Nbr of Remedial Plug Jobs Rqd - HES</b> Number Of Remedial Plug Jobs Needed After Primary Plug Pumped By HES	0
<b>Nbr of Remedial Sqz Jobs Rqd - HES</b> Number Of Remedial Squeeze Jobs Required After Primary Job Performed By HES	0