

T7N, R80W, 6th P.M.

Sandridge Exploration & Production, LLC

As Drilled Well Location,
Gregory 0780 1-09H and Gregory #5-09H located
as shown in the SW1/4SW1/4 of Section 9,
T7N, R80W, 6th P.M., Jackson County, Colorado.

BASIS OF BEARINGS:

US STATE PLANE 1983
CO NORTH 0501 GRID

BASIS OF ELEVATION

SPOT ELEVATION AT THE NW CORNER OF SECTION 9,
T7N, R80W, 6TH PM., TAKEN FROM THE COALMONT
QUADRANGLE, USGS 7.5 MIN QUAD (TOPOGRAPHIC MAP)
WITH SAID ELEVATION MARKED AS BEING 8091 FEET.

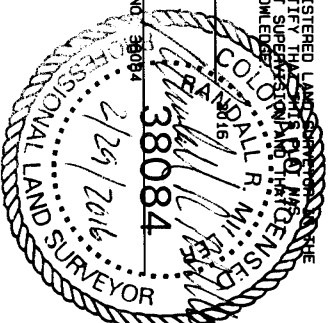
GRAPHIC SCALE 1"=1000'

1000 0 1000

I, RANDALL R. MILLER, BEING A REGISTERED LAND SURVEYOR IN THE
STATE OF COLORADO, DO HEREBY CERTIFY THAT THIS IS A TRUE AND CORRECT
MADE BY ME AND/OR UNDER MY DIRECT SUPERVISION AND THE INFORMATION
IS ACCURATE TO THE BEST OF MY KNOWLEDGE.

DATED THIS _____ DAY OF _____

RANDALL R. MILLER, COLORADO PLS NO. 38084



GL0 Brass Cap 1939
N=1457172.68
E=2758675.95

Gregory 0780 1-09H As Drilled

Surface Location Elev. Ungraded
Ground= 8118.7' 190' FSL, 64' FWL
N=1457272.29, E=2753423.03

Gregory 0780 1-09H PSA

Surface Location Elev. Ungraded
Ground= 8118.7' 202' FSL, 71' FWL
N=1457285.18, E=2753429.57

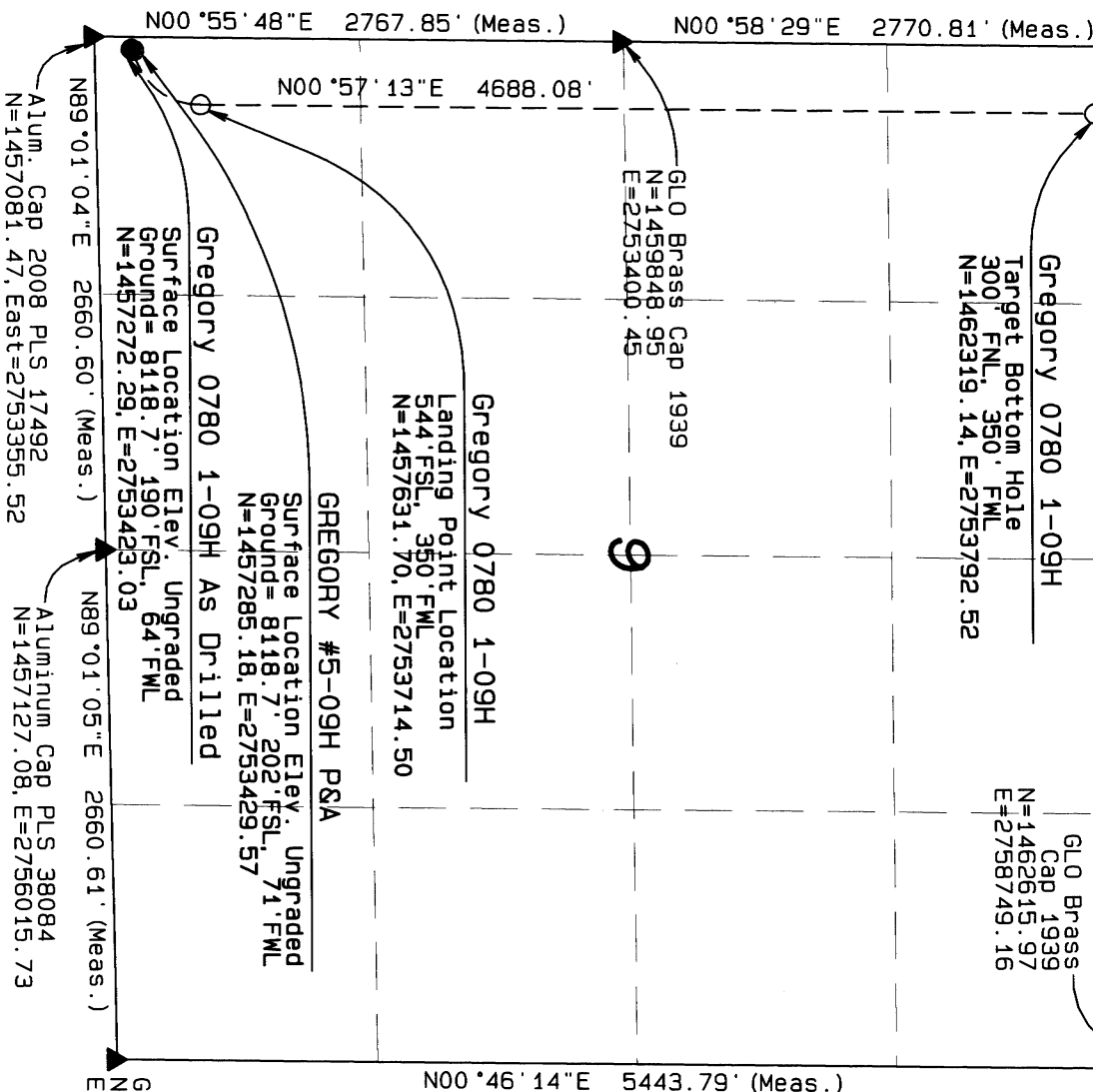
Gregory 0780 1-09H
Landing Point Location
544' FSL, 350' FWL
N=1457631.70, E=2753714.50

GL0 Brass Cap 1939
N=1459848.95
E=2753400.45

Gregory 0780 1-09H
Target Bottom Hole
300' FNL, 350' FWL
N=1462319.14, E=2753792.52

GL0 Brass
Cap 1939
N=1462615.97
E=2758749.16

GL0 Brass Cap 1939
Elev. = 8091'
N=1462619.36, E=2753447.58
Aluminum Cap PLS 38084
N=1462617.67, E=2756098.37



LEGEND

FOUND CORNER
PROPOSED WELL
PROPOSED BHL/LPL

NAD83 (SURFACE LOCATION 5-09H)	NAD83 (SURFACE LOCATION 1-09H)
LATITUDE=40.585258°N	LATITUDE=40.585223°N
LONGITUDE=106.387760°W	LONGITUDE=106.387783°W
PDOP = 1.398	PDOP = 1.530
NAD 83 (TARGET BOTTOM HOLE)	NAD 83 (LANDING POINT LOCATION)
LATITUDE=40.599085°N	LATITUDE=40.586217°N
LONGITUDE=106.386634°W	LONGITUDE=106.386746°W

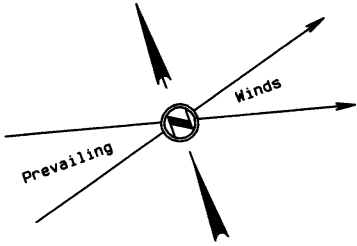
NORTH PARK ENGINEERING & CONSULTING, INC.

P.O. BOX 395
WALDEN, CO 80480
(970) 723-3725

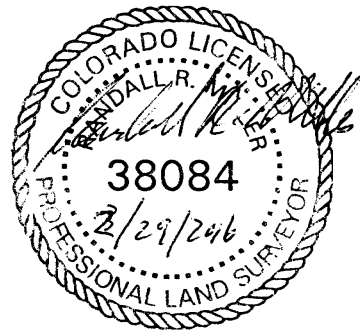
DATE OF FIELD WORK: Feb. 23, 2016 DRAWING COMPLETION: XXX XX, 2016
SURVEYED BY: RRM DRAWN BY: TTH CHECKED BY: RRM

SandRidge Exploration & Production, LLC

AS-DRILLED PAD LAYOUT
GREGORY 0780 1-09H AND GREGORY #5-09H
SW1/4SW1/4 of
SECTION 9, T7N, R80W, 6th P.M.



231'



345'

342'

121'

14'

137'

GREGORY #5-09H

Surface Location (P&A)
Elev. Ungraded
Ground=8118'

GREGORY 0780 1-09H

Surface Location
(As Drilled)
Elev. Ungraded
Ground=8118'

110.5'

275'

TOPSOIL STOCKPILE

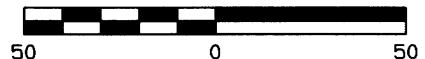
Existing Ranch Road
(Emergency Use Only)

Earthwork:

Total Excavation - 1000 Cu. Yd.
Pad Fill/Borrow - 5000 Cu. Yd.
Topsoil Stockpile - 1000 Cu. Yd.

GRAPHIC SCALE

1"=50'



Final Pad Elevation = 8118.69'

NORTH PARK ENGINEERING & CONSULTING, INC.
PO Box 395 Walden, CO 80480 970-723-3725