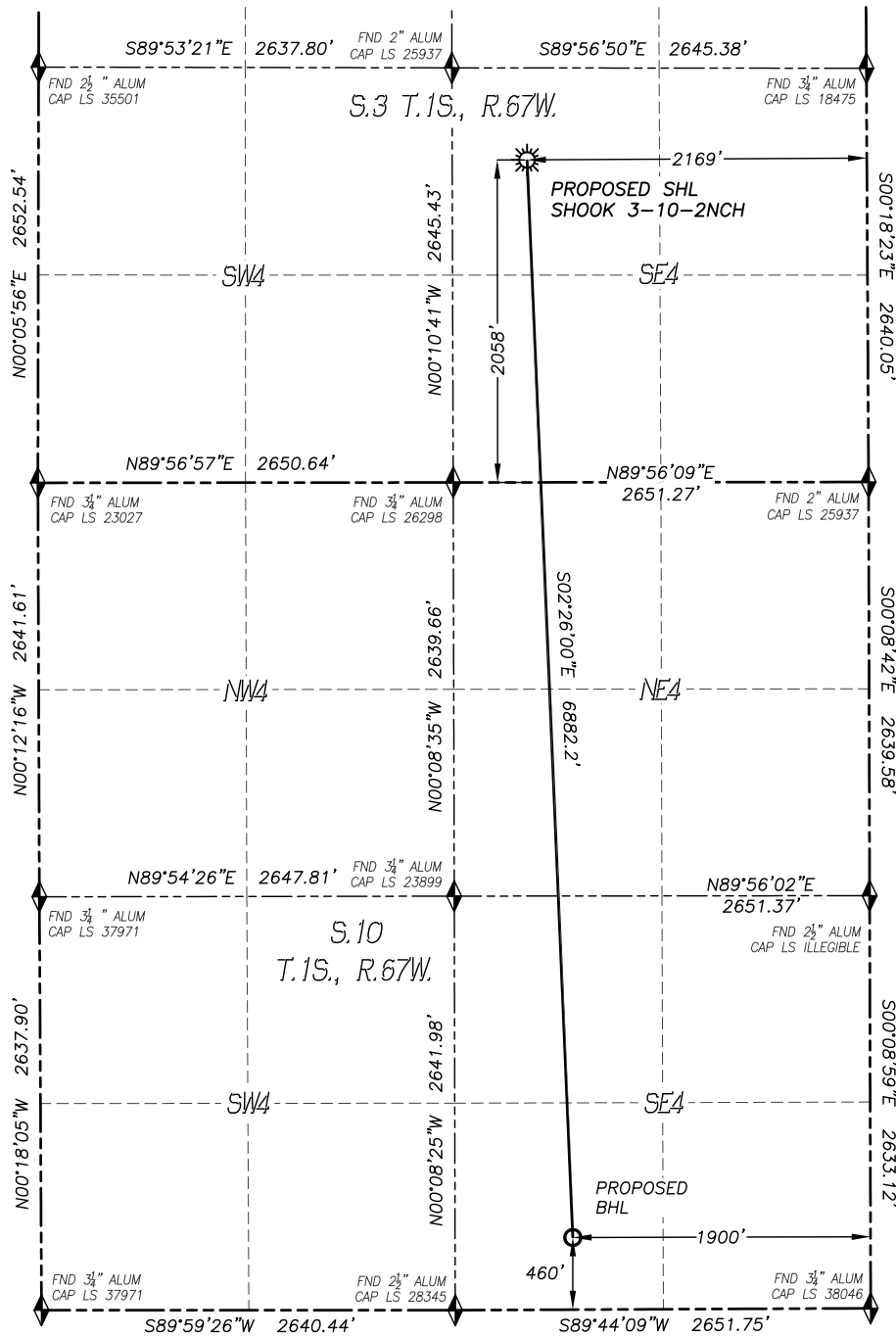


WELL LOCATION CERTIFICATE

SHOOK 3-10-2NCH

SECTION 3, TOWNSHIP 1 SOUTH, RANGE 67 WEST OF THE 6TH P.M.

**NAD 83 LATITUDE AND LONGITUDE****SURFACE LOCATION:**

LATITUDE: N39.99222°
 LONGITUDE: W104.87328°
 ELEVATION: 5096'
 FOOTAGE: 2058' FSL, 2169' FEL
 QTR/QTR: NW4/SE4
 PDOP: 1.0

LANDING POINT:

LATITUDE: N39.98893°
 LONGITUDE: W104.87229°
 FOOTAGE: 860' FSL, 1900' FEL
 OF SEC.3-T1S-R67W

BOTTOM HOLE:

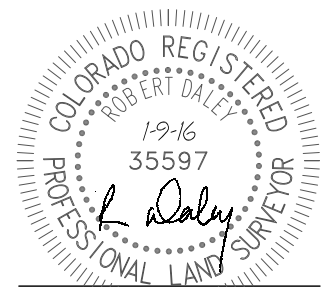
LATITUDE: N39.97335°
 LONGITUDE: W104.87223°
 FOOTAGE: 460' FSL, 1900' FEL
 OF SEC.10-T1S-R67W

NOTES:

1. BEARINGS FOR THIS MAP ARE ASSUMED AND BASED UPON GPS OBSERVATIONS MADE BETWEEN MONUMENTS LOCATED AT THE SOUTHWEST CORNER AND SOUTH QUARTER CORNER OF SECTION 3, T.1S., R.67W.
2. HORIZONTAL DATUM IS NAD83.
3. VERTICAL DATUM IS NAVD88 AND ORIGINATES FROM THE LOCAL C.O.R.S. NETWORK, UTILIZING THE GEOID12A MODEL.
4. SEE LOCATION DRAWING FOR VISIBLE IMPROVEMENTS WITHIN 500' OF PROPOSED DISTURBED AREA.
5. SURFACE USE: PASTURE.
6. INST. OPERATOR: SCOTT ESTABROOKS.

NEAREST CULTURAL ITEMS:

BUILDING: 1014'± SW
 BUILDING UNIT: 954'± SW
 HIGH OCC. BLD. UNIT: 5280'±
 DES. OUTSIDE ACTIVITY AREA: 5280'±
 PUBLIC ROAD: 1047'± SW
 ABOVE GROUND UTILITY: 928'± SW
 RAILROAD: 5280'±
 PROPERTY LINE: 254'± SW



FOR AND ON BEHALF OF
 DALEY LAND SURVEYING INC.,
 Robert Daley, PLS 35597

LEGEND

- ◆ FOUND MONUMENT
- ◇ CALCULATED POSITION
- ☀ PROPOSED WELL
- BOTTOM HOLE
- ⊗ ABANDONED WELL
- ⊗ EXISTING WELL

0 600 1200
 SCALE: 1" = 1200'

IN ACCORDANCE WITH A REQUEST FROM PETROSHARE CORP., DALEY LAND SURVEYING, INC. HAS DETERMINED THE SURFACE LOCATION OF THE SHOOK 3-10-2NCH WELL TO BE 2058' FSL, 2169' FEL, AS MEASURED AT NINETY (90) DEGREES FROM THE SECTION LINES OF SECTION 3, TOWNSHIP 1 SOUTH, RANGE 67 WEST, OF THE 6TH P.M., AND THE BOTTOM HOLE LOCATION TO BE 460' FSL, 1900' FEL, AS MEASURED AT NINETY (90) DEGREES FROM THE SECTION LINES OF SECTION 10, TOWNSHIP 1 SOUTH, RANGE 67 WEST OF THE 6TH P.M., ADAMS COUNTY, COLORADO.

I HEREBY STATE THAT THIS WELL LOCATION CERTIFICATE WAS PREPARED BY ME OR UNDER MY DIRECT SUPERVISION, THAT THE WORK WAS COMPLETED ON 10/10/2015 FOR AND ON BEHALF OF PETROSHARE CORP. AND THAT THIS MAP DOES NOT REPRESENT A BOUNDARY SURVEY, IT IS NOT A LAND SURVEY PLAT OR AN IMPROVEMENT SURVEY PLAT AND IT IS NOT TO BE RELIED UPON FOR THE ESTABLISHMENT OF FENCE, BUILDING OR OTHER FUTURE IMPROVEMENT LINES.