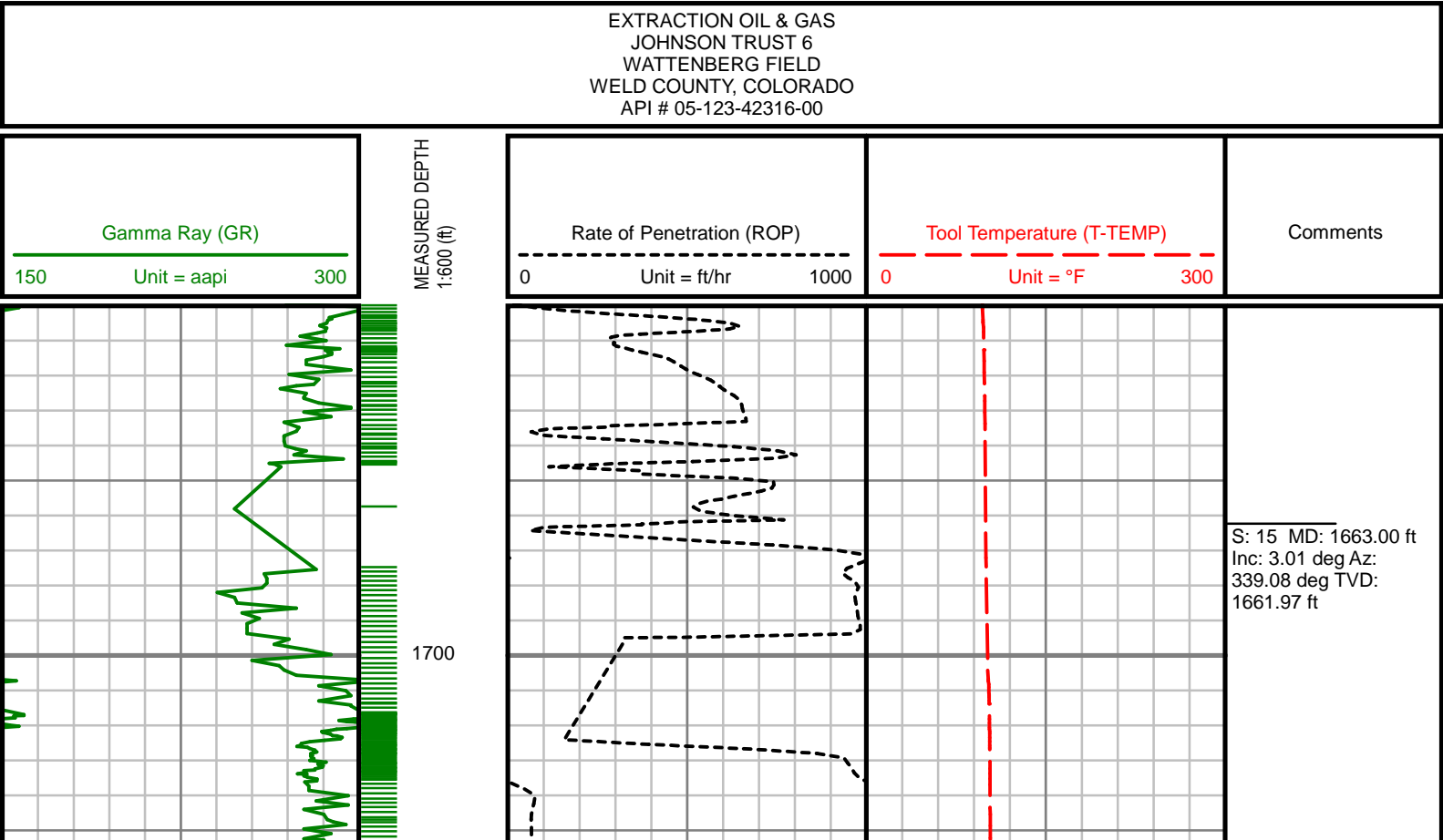
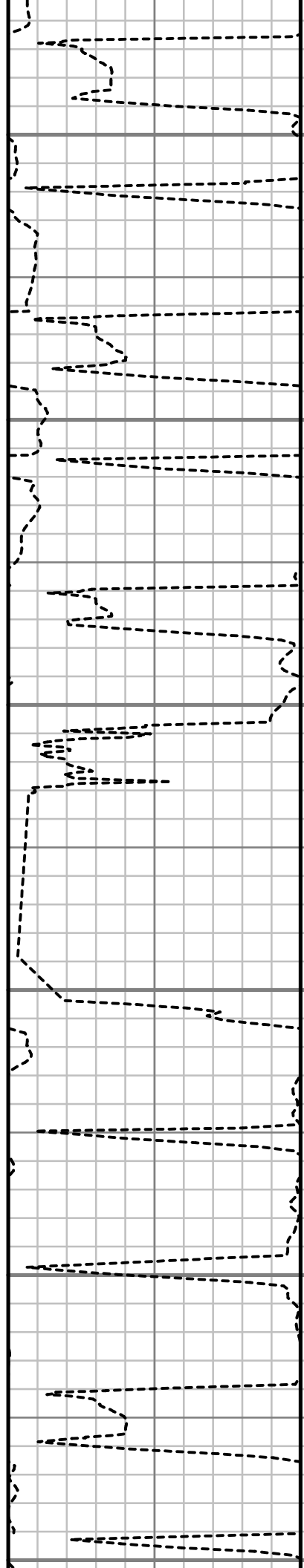
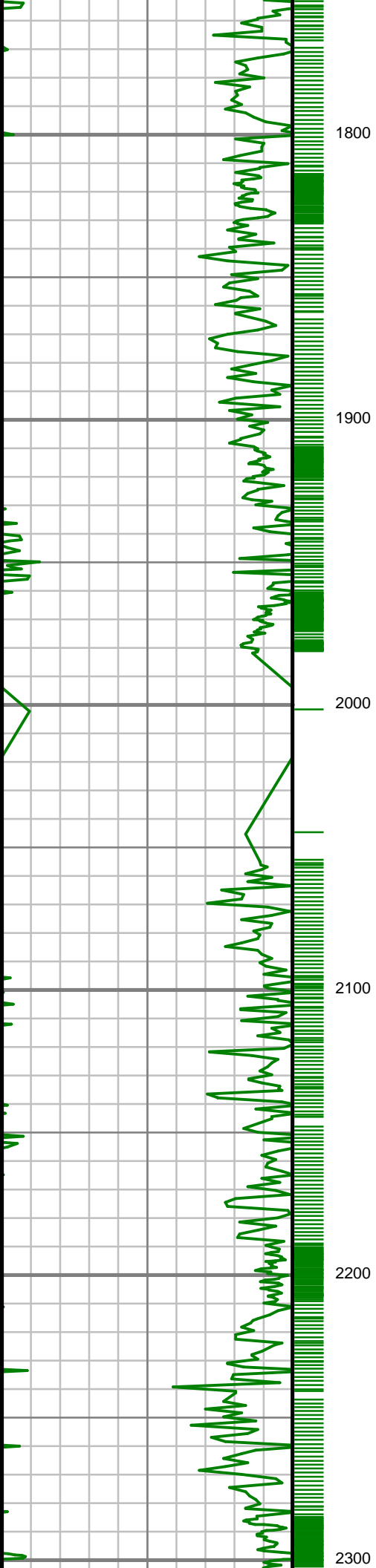




Remarks
EXTRACTION OIL AND GAS PRODUCTION AFE# 14-523
SCIENTIFIC DRILLING INTERNATIONAL JOB# 342170
ALL REFERENCES IN THE DEPTH TRACK ARE AT BIT DEPTH.
ALL DATA IS MEMORY DATA UNLESS STATED OTHERWISE.
FLAT AVERAGE FILTER OF 1.00 FT APPLIED TO GAMMA RAY CURVE
FLAT AVERAGE FILTER OF 1.00 FT APPLIED TO RATE OF PENETRATION CURVE
FLAT AVERAGE FILTER OF 1.00 FT APPLIED TO TOOL TEMPERATURE CURVE
RUN #1: MWD / GAMMA RAY LOGGING RUN
SENSORS S/N: PULSER = 128-377 / CONT = 595 / MWD EYE = 0510 / GAMMA RAY = 1039
BIT TO SENSOR OFFSETS: SURVEY = 57.84 / GAMMA RAY = 49.15
RUN #2: MWD / GAMMA RAY LOGGING RUN
SENSORS S/N: PULSER = 128-377 / CONT = 595 / MWD EYE = 0510 / GAMMA RAY = 1039
BIT TO SENSOR OFFSETS: SURVEY = 57.67 / GAMMA RAY = 48.98
MNEMONICS LIST:
GR = GAMMA RAY
ROP = RATE OF PENETRATION
T-TEMP = TOOL TEMPERATURE

All interpretations are opinions based on inferences from electrical or other measurements and we cannot, and do not guarantee the accuracy or correctness of any interpretations, and we shall not, except in the case of gross or willful negligence on our part, be liable or responsible for any loss, costs, damages or expenses incurred or sustained by anyone resulting from any interpretation made by any of our officers, agents or employees. These interpretations are also subject to our general terms and conditions as set out in our current price schedule.





S: 16 MD: 1757.00 ft  
Inc: 2.48 deg Az:  
346.10 deg TVD:  
1755.87 ft

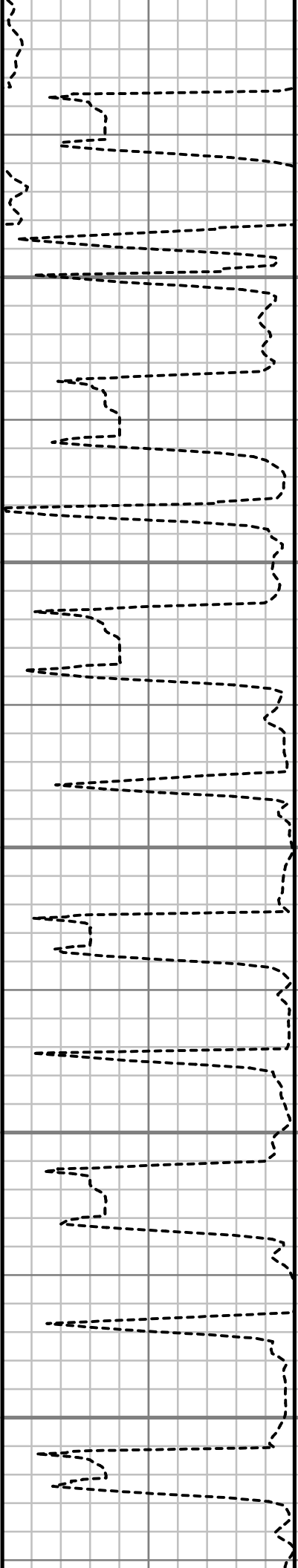
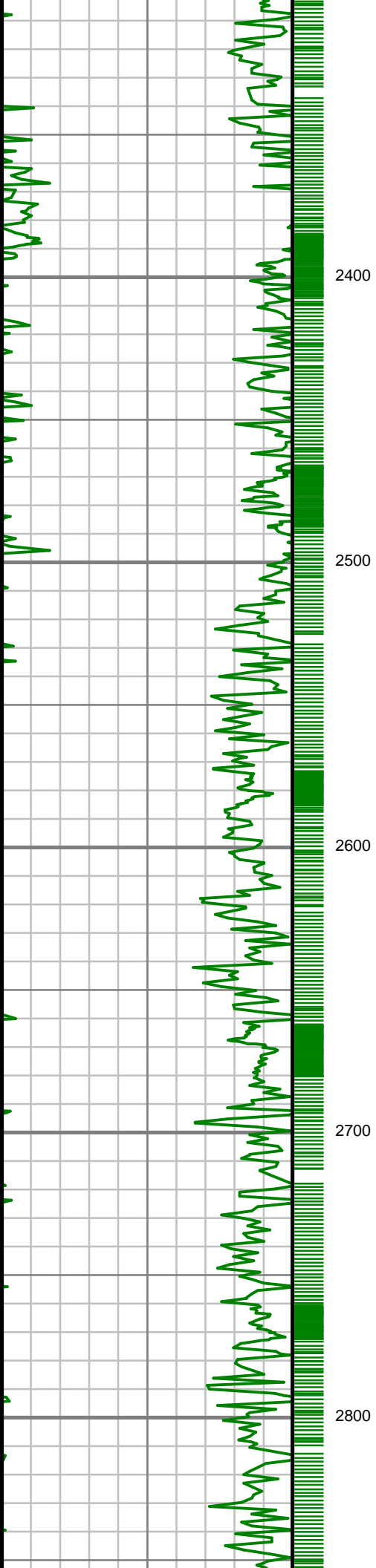
S: 17 MD: 1852.00 ft  
Inc: 3.73 deg Az: 39.26  
deg TVD: 1850.74 ft

S: 18 MD: 1947.00 ft  
Inc: 5.88 deg Az: 48.17  
deg TVD: 1945.40 ft

S: 19 MD: 2041.00 ft  
Inc: 7.18 deg Az: 57.36  
deg TVD: 2038.79 ft

S: 20 MD: 2136.00 ft  
Inc: 6.04 deg Az: 63.90  
deg TVD: 2133.16 ft

S: 21 MD: 2230.00 ft  
Inc: 5.71 deg Az: 61.19  
deg TVD: 2226.67 ft



S: 22 MD: 2325.00 ft  
Inc: 7.14 deg Az: 63.39  
deg TVD: 2321.07 ft

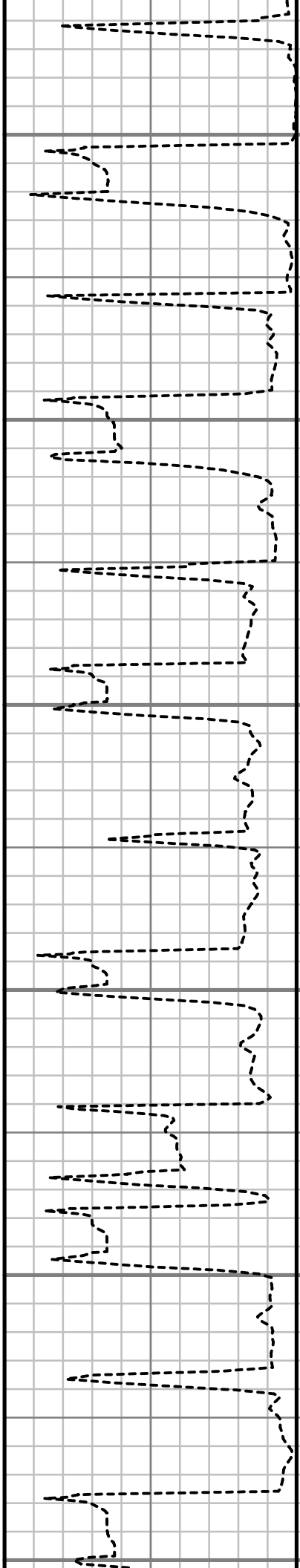
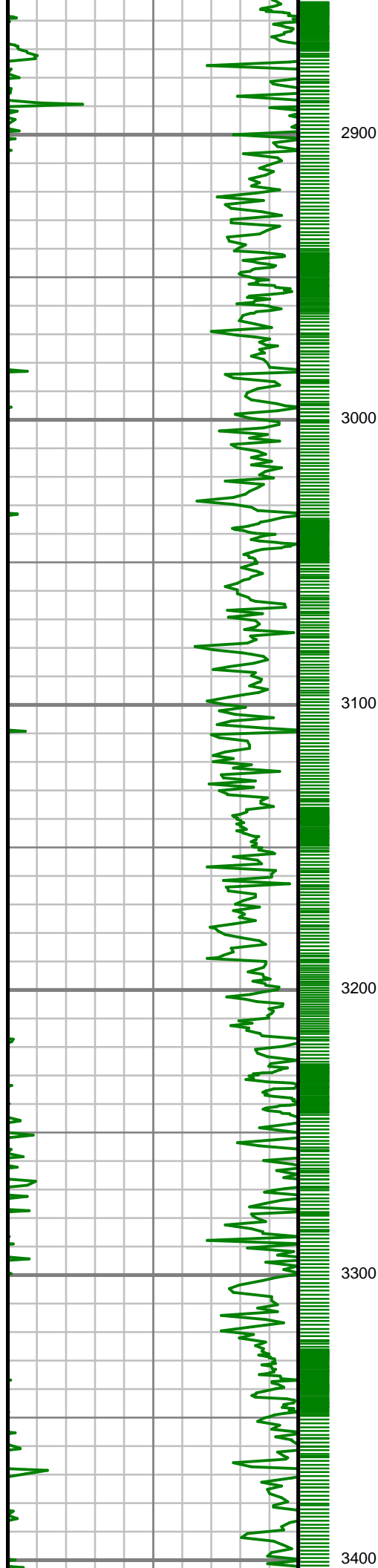
S: 23 MD: 2420.00 ft  
Inc: 9.10 deg Az: 63.69  
deg TVD: 2415.11 ft

S: 24 MD: 2516.00 ft  
Inc: 13.40 deg Az:  
62.25 deg TVD:  
2509.25 ft

S: 25 MD: 2611.00 ft  
Inc: 14.25 deg Az:  
61.43 deg TVD:  
2601.49 ft

S: 26 MD: 2705.00 ft  
Inc: 14.36 deg Az:  
58.22 deg TVD:  
2692.58 ft

S: 27 MD: 2800.00 ft  
Inc: 15.52 deg Az:  
57.51 deg TVD:  
2784.37 ft



S: 28 MD: 2894.00 ft  
Inc: 14.37 deg Az:  
58.33 deg TVD:  
2875.19 ft

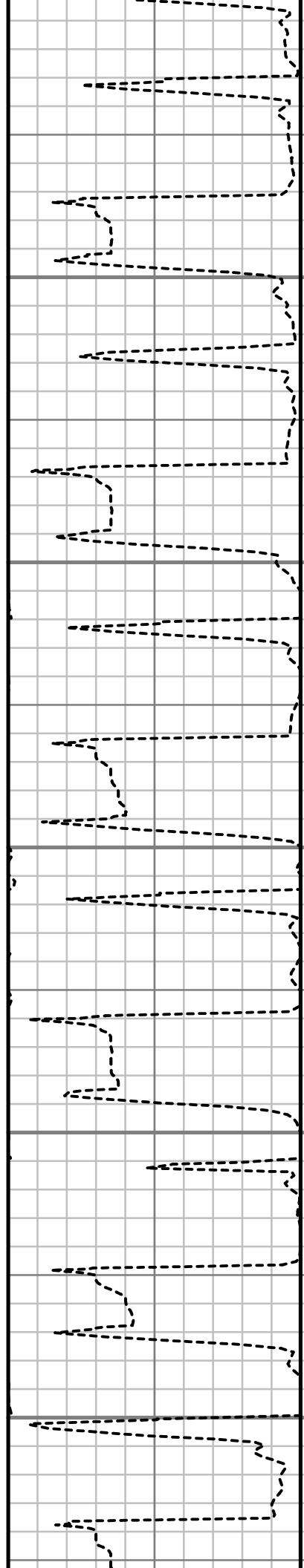
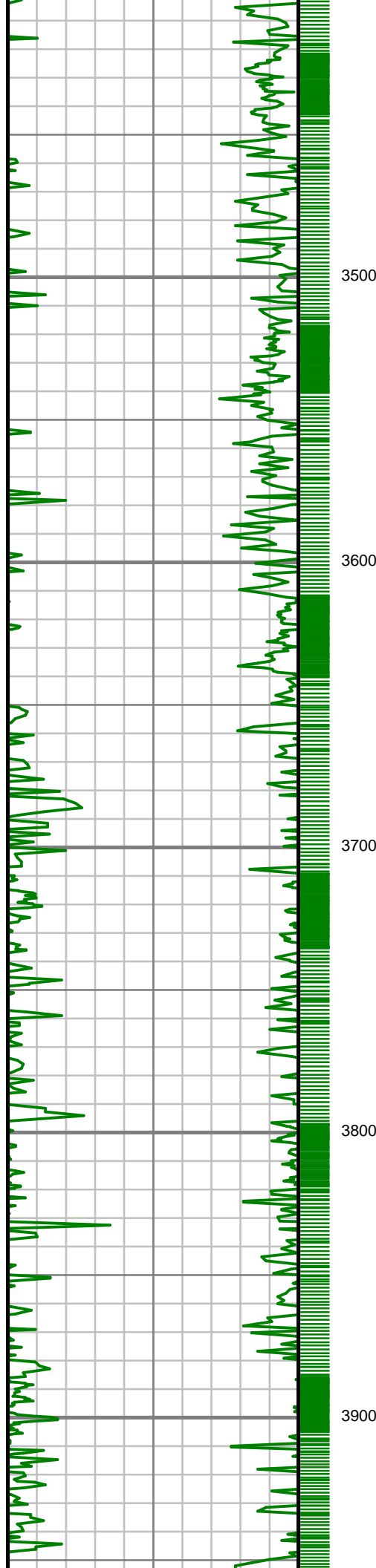
S: 29 MD: 2989.00 ft  
Inc: 16.08 deg Az:  
58.16 deg TVD:  
2966.85 ft

S: 30 MD: 3084.00 ft  
Inc: 17.10 deg Az:  
59.34 deg TVD:  
3057.89 ft

S: 31 MD: 3179.00 ft  
Inc: 16.38 deg Az:  
55.83 deg TVD:  
3148.87 ft

S: 32 MD: 3274.00 ft  
Inc: 15.90 deg Az:  
50.68 deg TVD:  
3240.13 ft

S: 33 MD: 3369.00 ft  
Inc: 15.42 deg Az:  
45.69 deg TVD:  
3331.60 ft



S: 34 MD: 3464.00 ft  
Inc: 15.49 deg Az:  
48.97 deg TVD:  
3423.17 ft

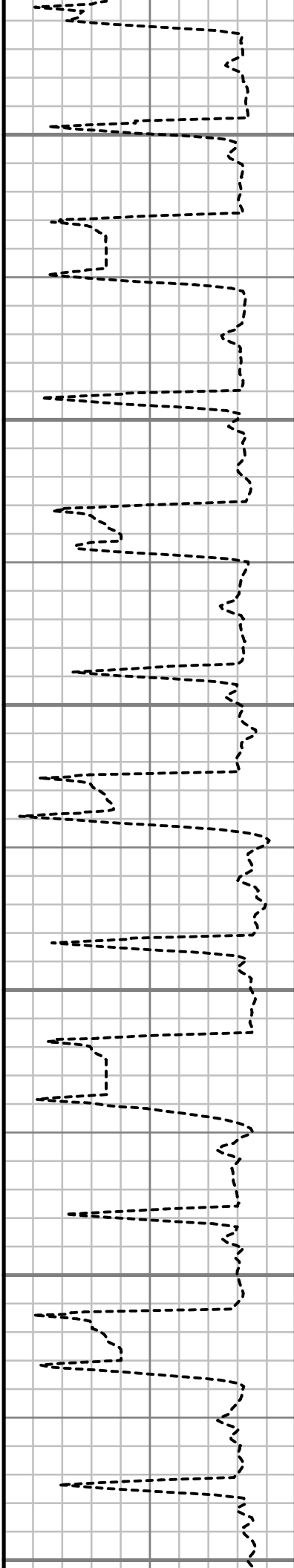
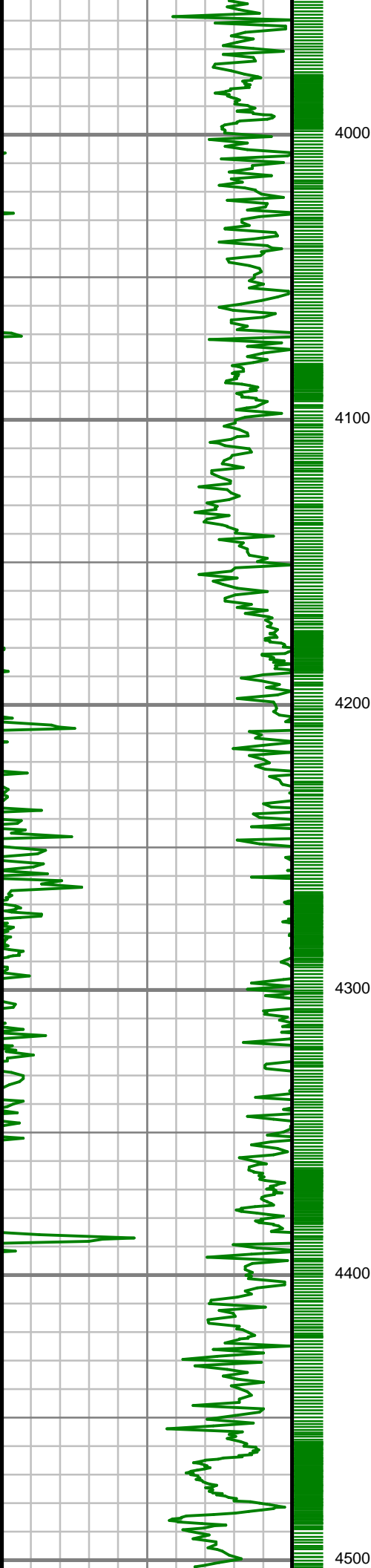
S: 35 MD: 3558.00 ft  
Inc: 14.88 deg Az:  
48.51 deg TVD:  
3513.89 ft

S: 36 MD: 3653.00 ft  
Inc: 15.17 deg Az:  
48.83 deg TVD:  
3605.64 ft

S: 37 MD: 3747.00 ft  
Inc: 16.76 deg Az:  
49.00 deg TVD:  
3696.01 ft

S: 38 MD: 3843.00 ft  
Inc: 18.10 deg Az:  
50.32 deg TVD:  
3787.60 ft

S: 39 MD: 3937.00 ft  
Inc: 18.25 deg Az:  
56.73 deg TVD:



S: 39 MD: 4000.00 ft  
Inc: 18.75 deg Az:  
3876.92 ft

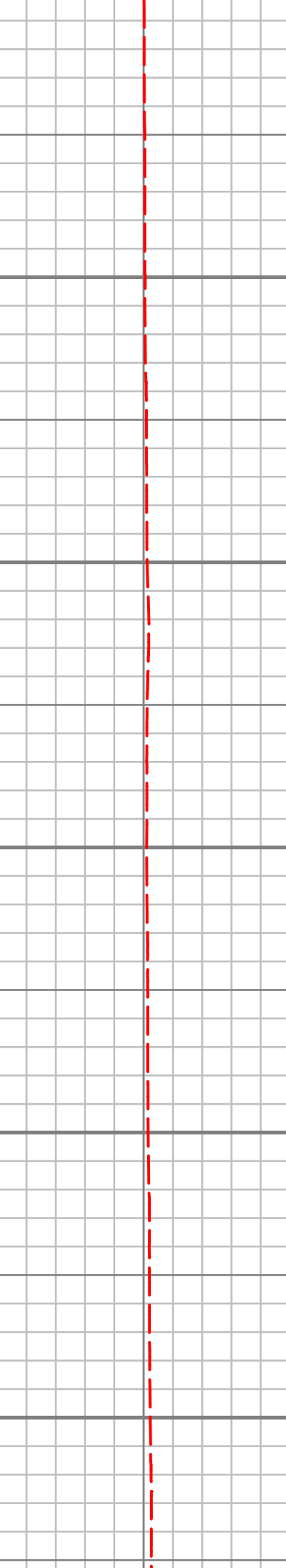
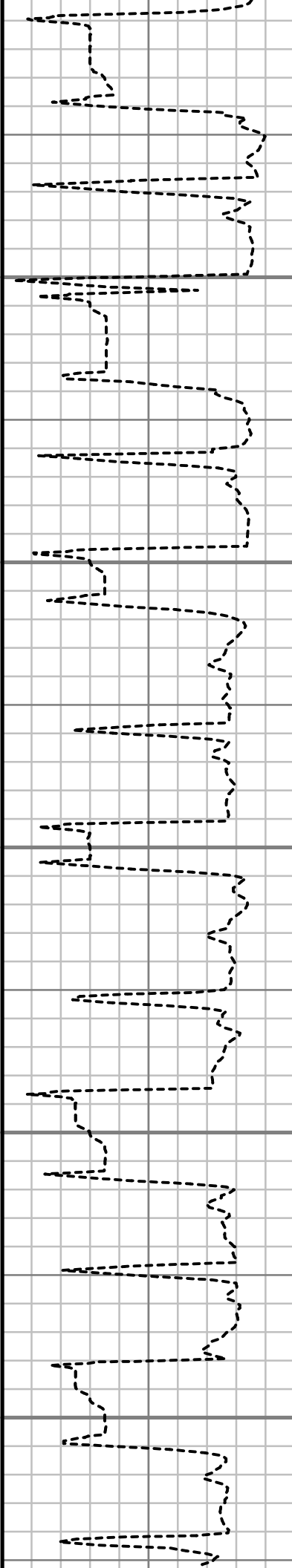
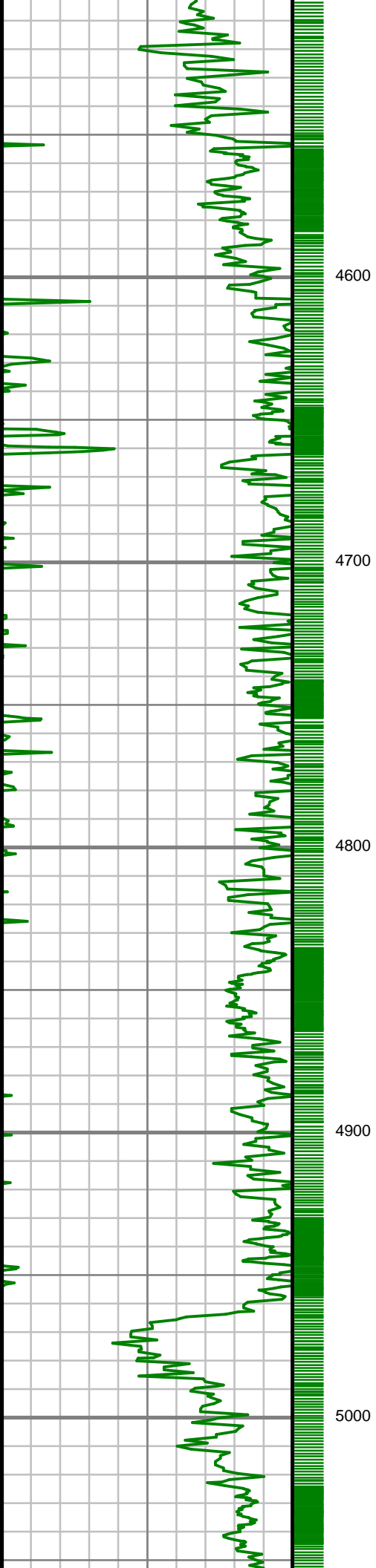
S: 40 MD: 4032.00 ft  
Inc: 18.86 deg Az:  
56.23 deg TVD:  
3966.98 ft

S: 41 MD: 4126.00 ft  
Inc: 18.90 deg Az:  
53.62 deg TVD:  
4055.92 ft

S: 42 MD: 4221.00 ft  
Inc: 17.13 deg Az:  
55.53 deg TVD:  
4146.26 ft

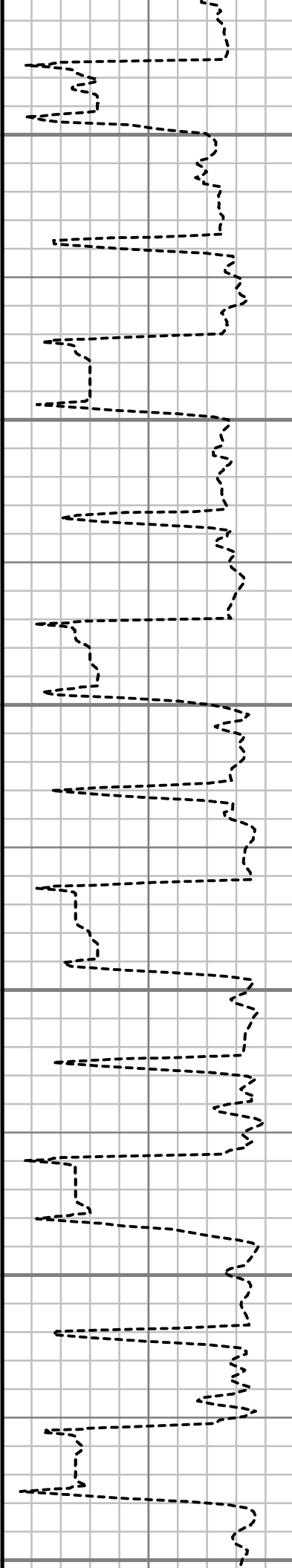
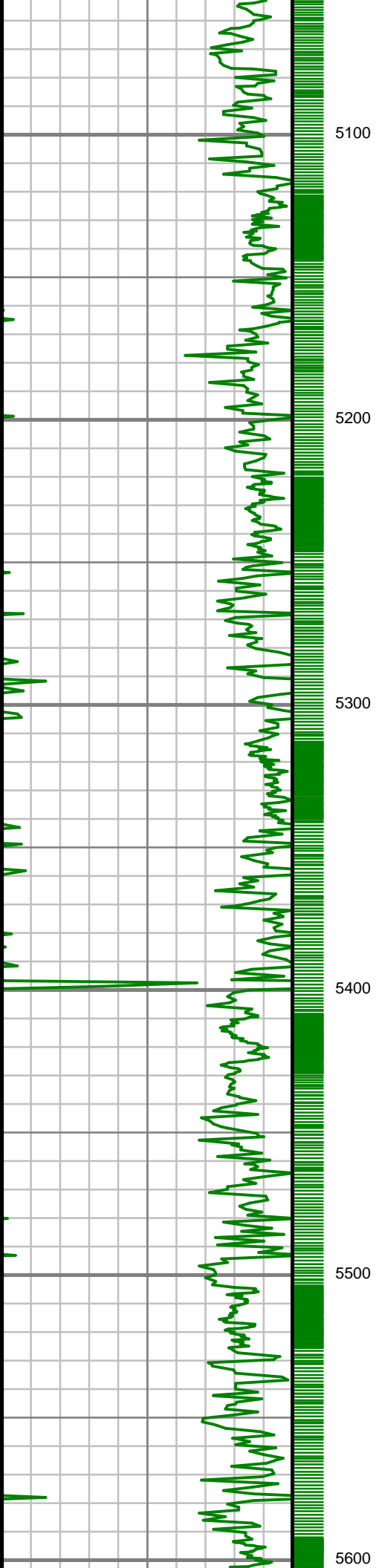
S: 43 MD: 4316.00 ft  
Inc: 16.75 deg Az:  
53.65 deg TVD:  
4237.14 ft

S: 44 MD: 4411.00 ft  
Inc: 15.13 deg Az:  
55.48 deg TVD:  
4328.49 ft



S: 45 MD: 4506.00 ft Inc: 14.39 deg Az: 50.11 deg TVD: 4420.36 ft
S: 46 MD: 4601.00 ft Inc: 17.63 deg Az: 47.66 deg TVD: 4511.66 ft
S: 47 MD: 4696.00 ft Inc: 20.19 deg Az: 46.90 deg TVD: 4601.53 ft
S: 48 MD: 4790.00 ft Inc: 17.60 deg Az: 40.21 deg TVD: 4690.46 ft
S: 49 MD: 4885.00 ft Inc: 15.71 deg Az: 34.93 deg TVD: 4781.48 ft
S: 50 MD: 4979.00 ft Inc: 16.66 deg Az: 37.10 deg TVD: 4871.75 ft





S: 51 MD: 5073.00 ft  
Inc: 16.95 deg Az:  
42.03 deg TVD:  
4961.75 ft

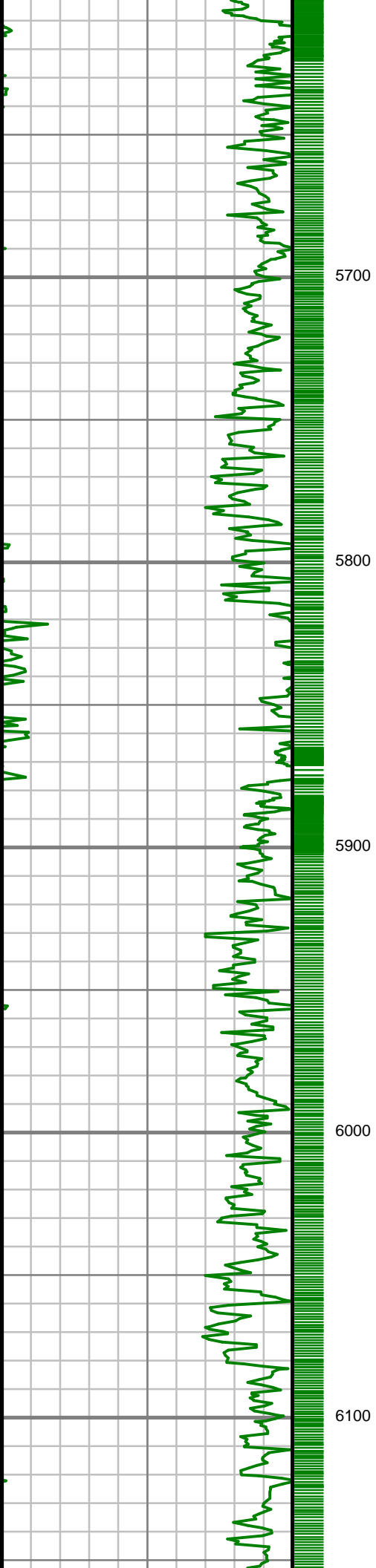
S: 52 MD: 5168.00 ft  
Inc: 14.57 deg Az:  
40.93 deg TVD:  
5053.17 ft

S: 53 MD: 5263.00 ft  
Inc: 13.36 deg Az:  
36.82 deg TVD:  
5145.36 ft

S: 54 MD: 5357.00 ft  
Inc: 14.36 deg Az:  
37.90 deg TVD:  
5236.62 ft

S: 55 MD: 5452.00 ft  
Inc: 15.14 deg Az:  
44.54 deg TVD:  
5328.50 ft

S: 56 MD: 5546.00 ft  
Inc: 14.75 deg Az:  
44.69 deg TVD:  
5419.32 ft



S: 57 MD: 5641.00 ft  
Inc: 14.91 deg Az:  
48.02 deg TVD:  
5511.16 ft

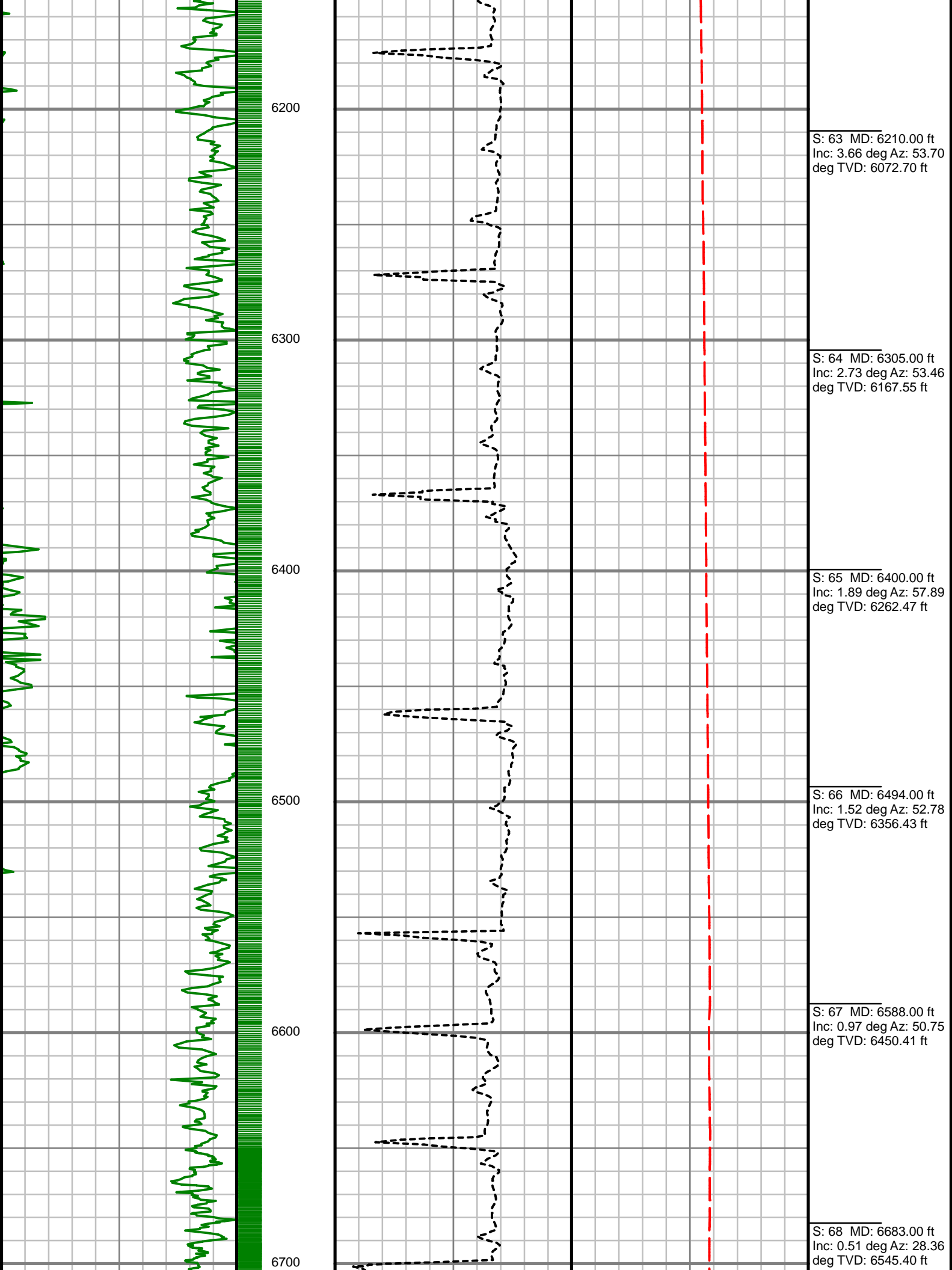
S: 58 MD: 5736.00 ft  
Inc: 13.23 deg Az:  
55.68 deg TVD:  
5603.31 ft

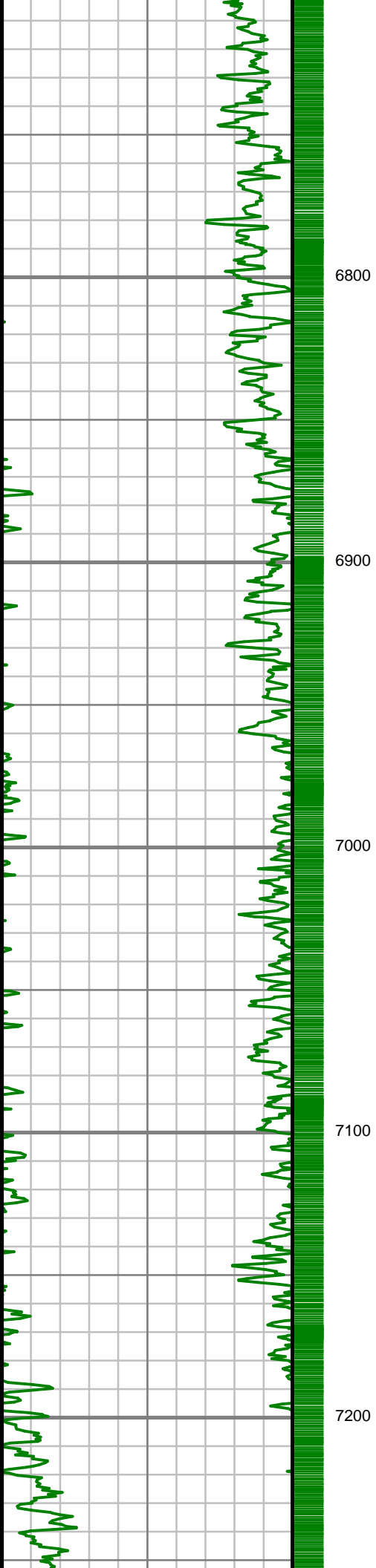
S: 59 MD: 5831.00 ft  
Inc: 9.70 deg Az: 52.48  
deg TVD: 5696.40 ft

S: 60 MD: 5925.00 ft  
Inc: 7.98 deg Az: 49.06  
deg TVD: 5789.28 ft

S: 61 MD: 6020.00 ft  
Inc: 6.79 deg Az: 62.30  
deg TVD: 5883.50 ft

S: 62 MD: 6115.00 ft  
Inc: 5.13 deg Az: 60.23  
deg TVD: 5977.98 ft





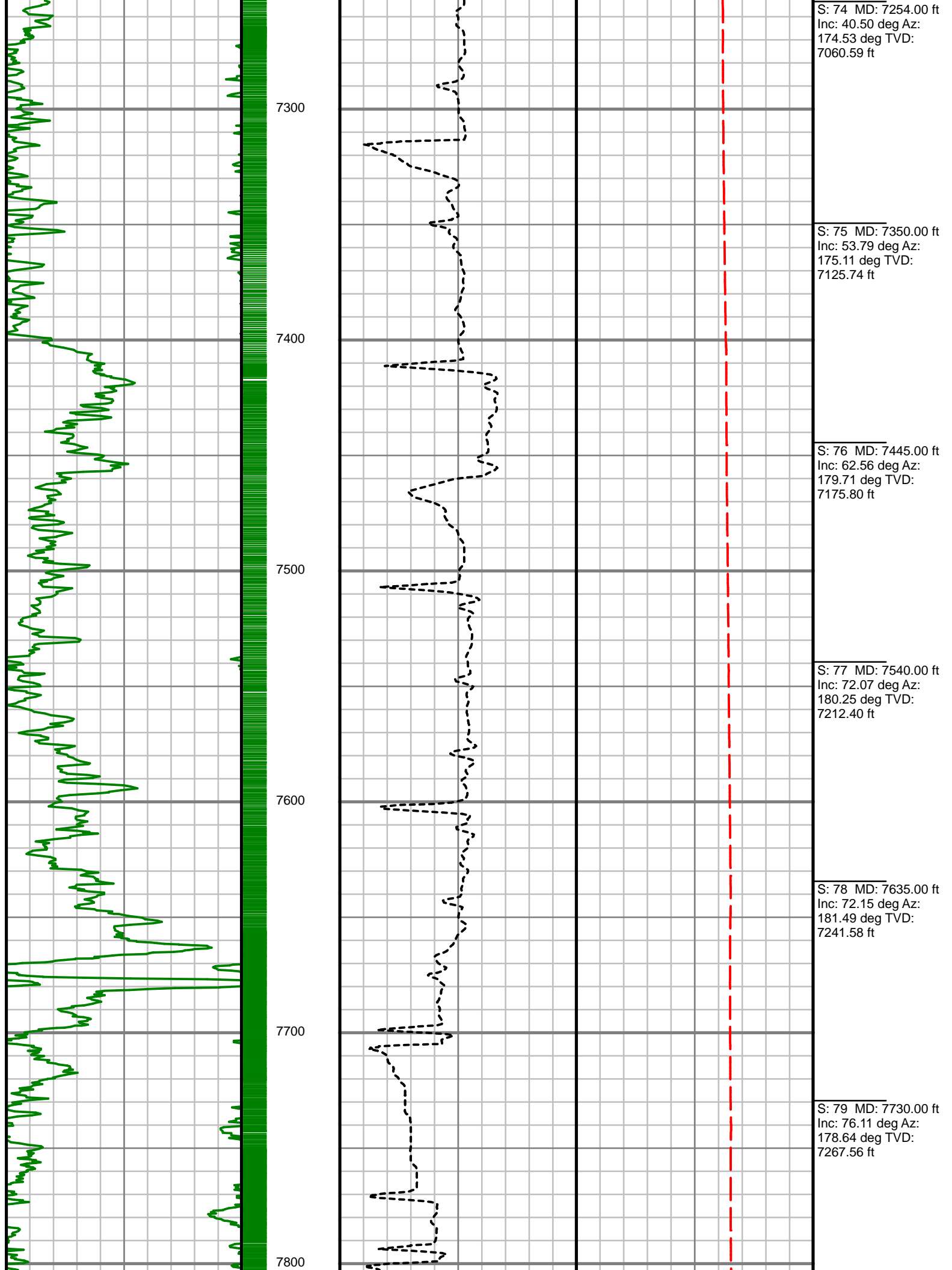
S: 69 MD: 6778.00 ft  
Inc: 11.28 deg Az:  
173.60 deg TVD:  
6639.81 ft

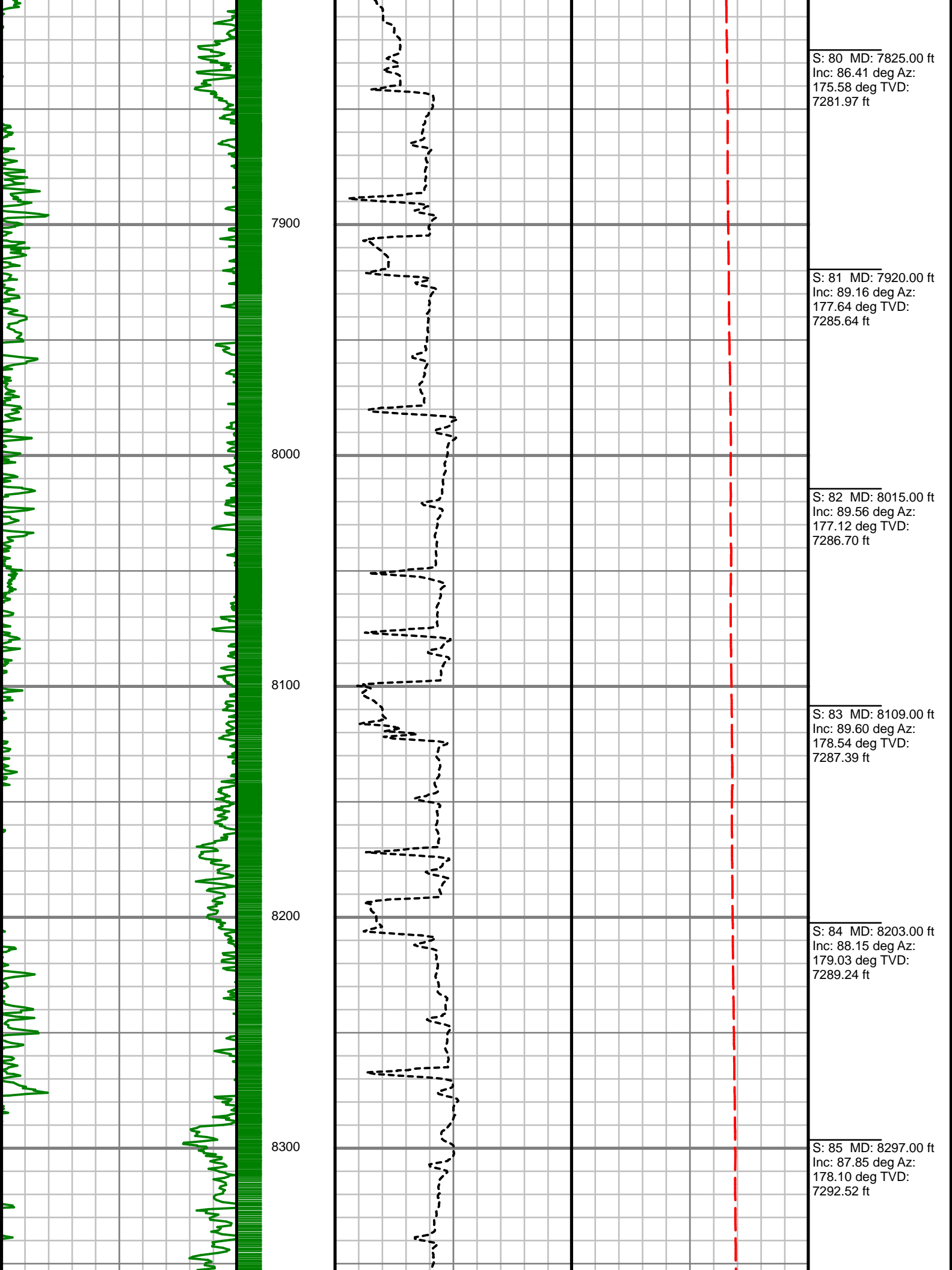
S: 70 MD: 6873.00 ft  
Inc: 19.69 deg Az:  
175.88 deg TVD:  
6731.28 ft

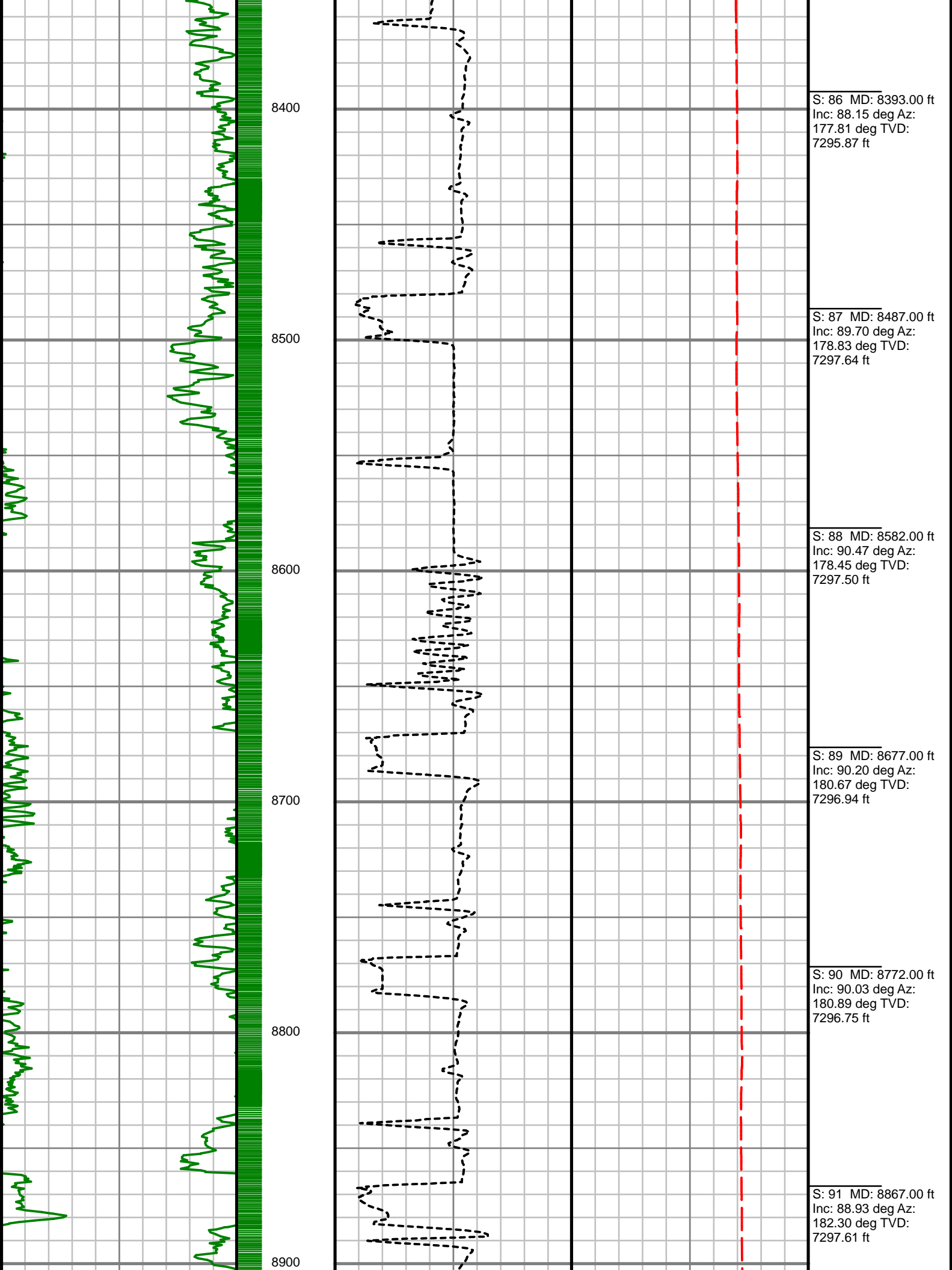
S: 71 MD: 6968.00 ft  
Inc: 24.10 deg Az:  
178.90 deg TVD:  
6819.41 ft

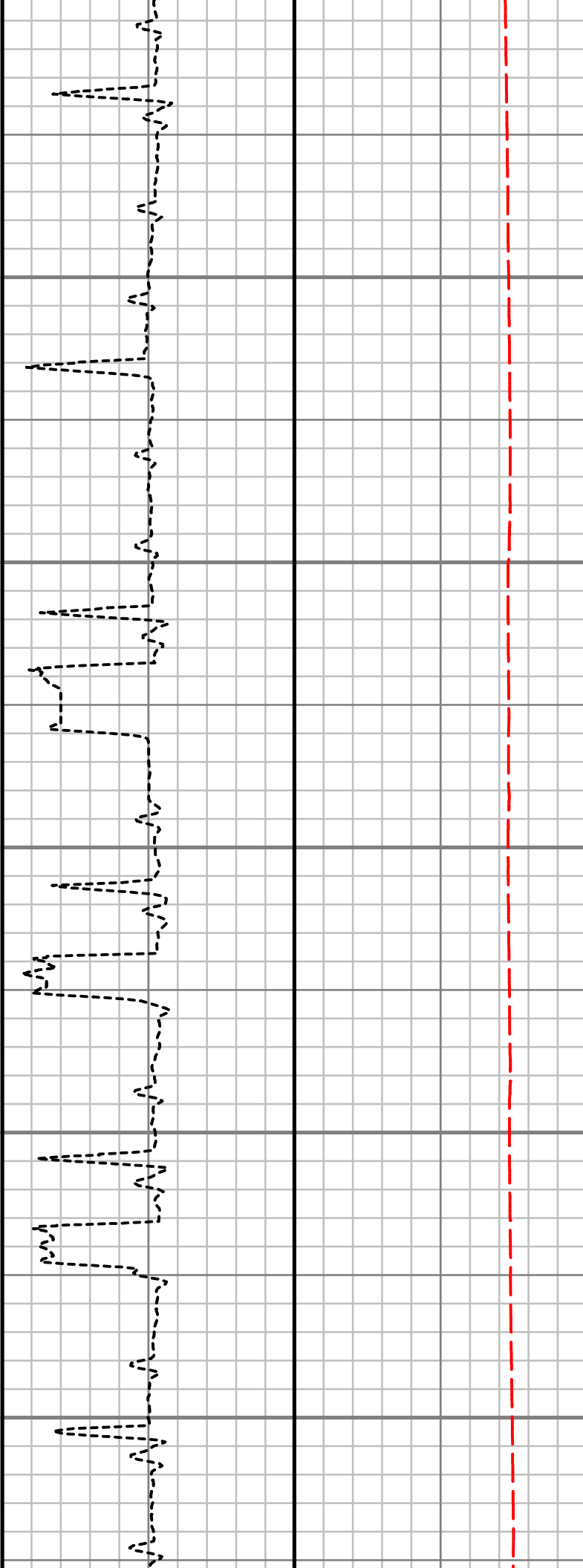
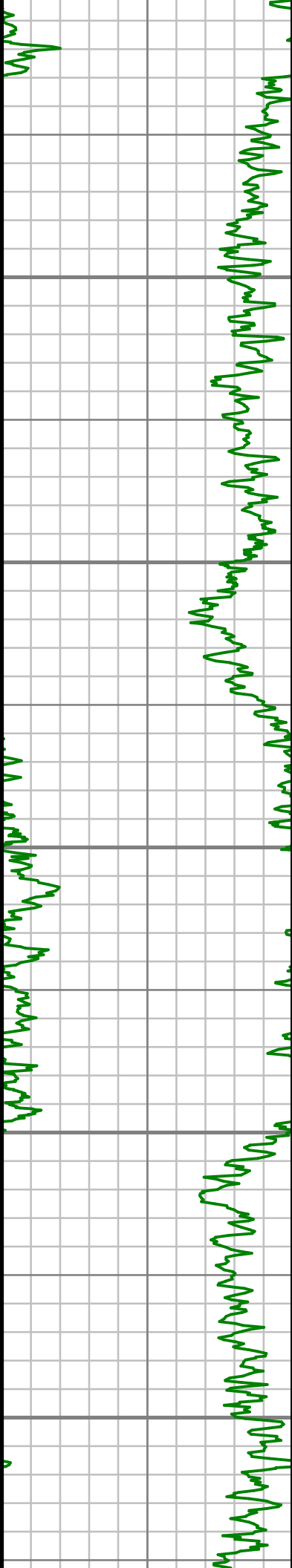
S: 72 MD: 7063.00 ft  
Inc: 30.62 deg Az:  
183.35 deg TVD:  
6903.74 ft

S: 73 MD: 7159.00 ft  
Inc: 33.89 deg Az:  
175.69 deg TVD:  
6984.95 ft









S: 92 MD: 8962.00 ft  
Inc: 88.05 deg Az:  
183.39 deg TVD:  
7300.12 ft

S: 93 MD: 9057.00 ft  
Inc: 87.58 deg Az:  
183.79 deg TVD:  
7303.74 ft

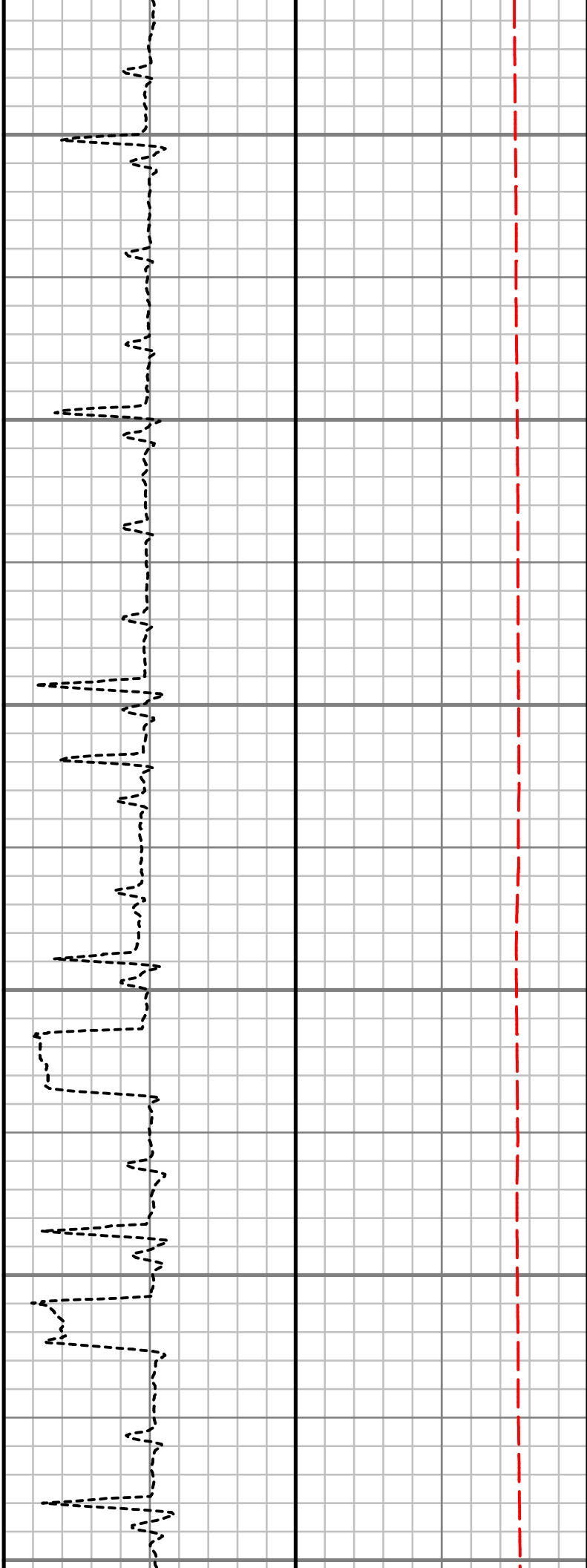
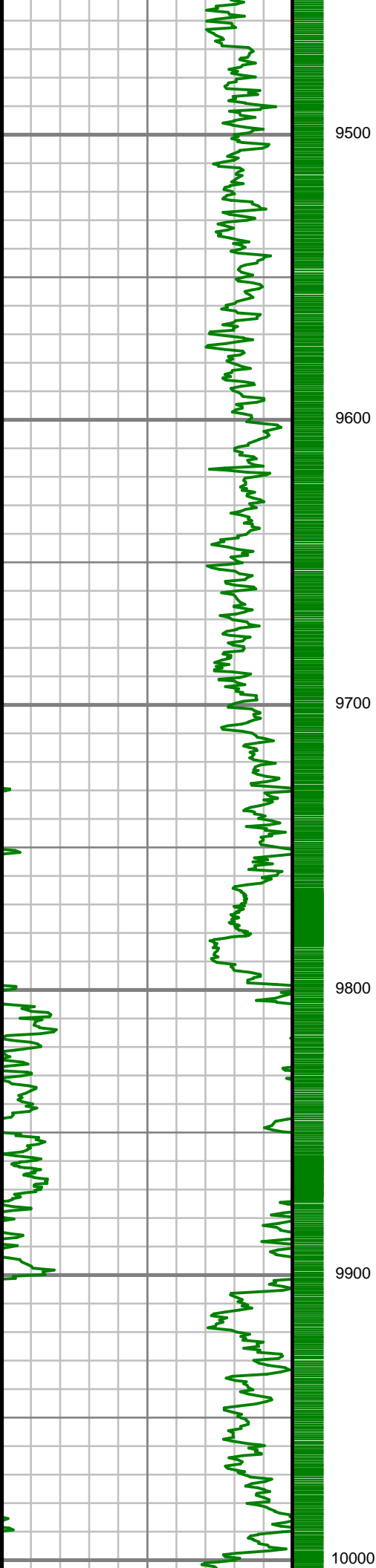
S: 94 MD: 9152.00 ft  
Inc: 87.65 deg Az:  
181.56 deg TVD:  
7307.69 ft

S: 95 MD: 9247.00 ft  
Inc: 87.52 deg Az:  
180.44 deg TVD:  
7311.69 ft

S: 96 MD: 9343.00 ft  
Inc: 88.76 deg Az:  
179.75 deg TVD:  
7314.81 ft

S: 97 MD: 9439.00 ft  
Inc: 89.97 deg Az:





180.36 deg TVD:  
7315.88 ft

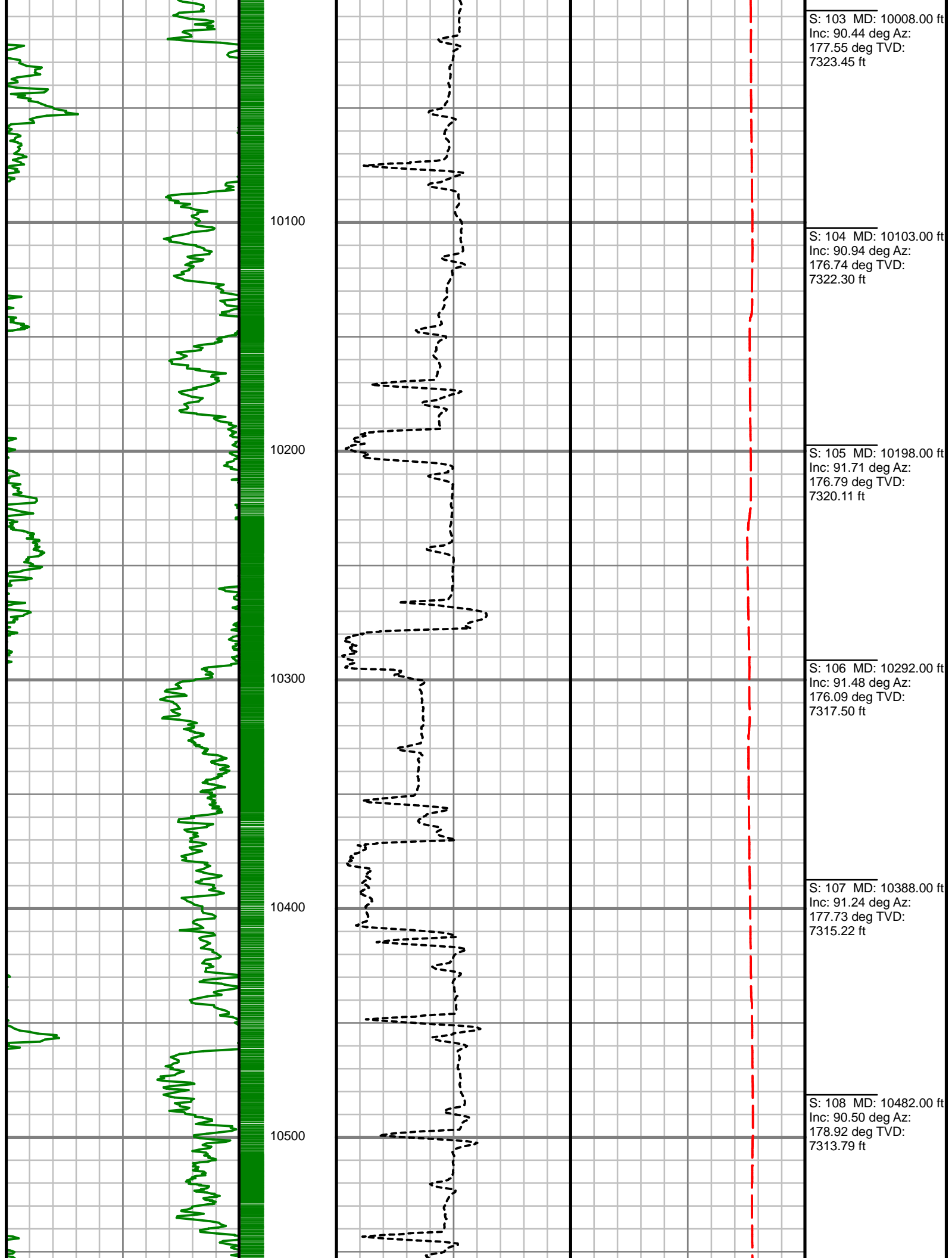
S: 98 MD: 9534.00 ft  
Inc: 88.83 deg Az:  
179.75 deg TVD:  
7316.88 ft

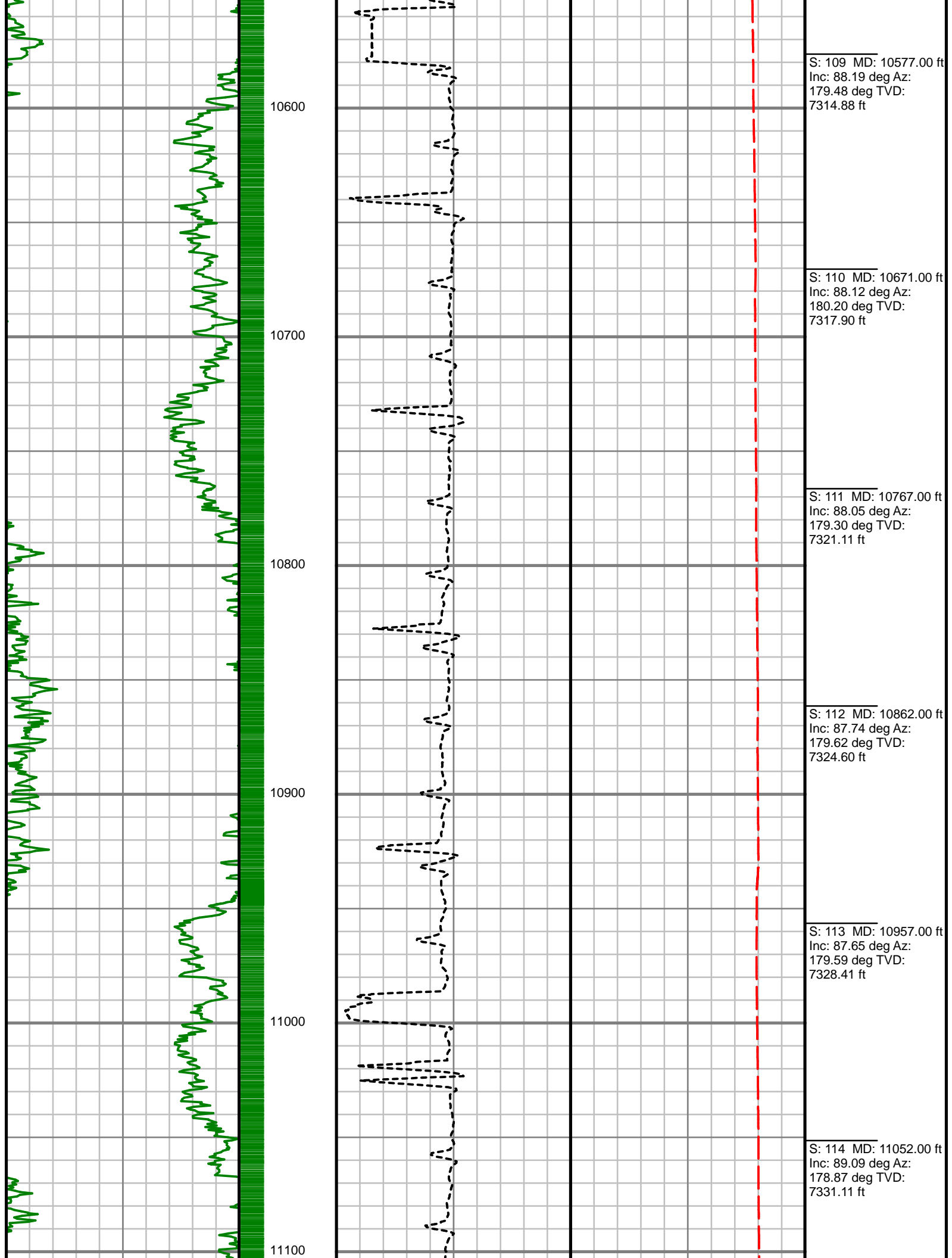
S: 99 MD: 9629.00 ft  
Inc: 88.76 deg Az:  
180.21 deg TVD:  
7318.88 ft

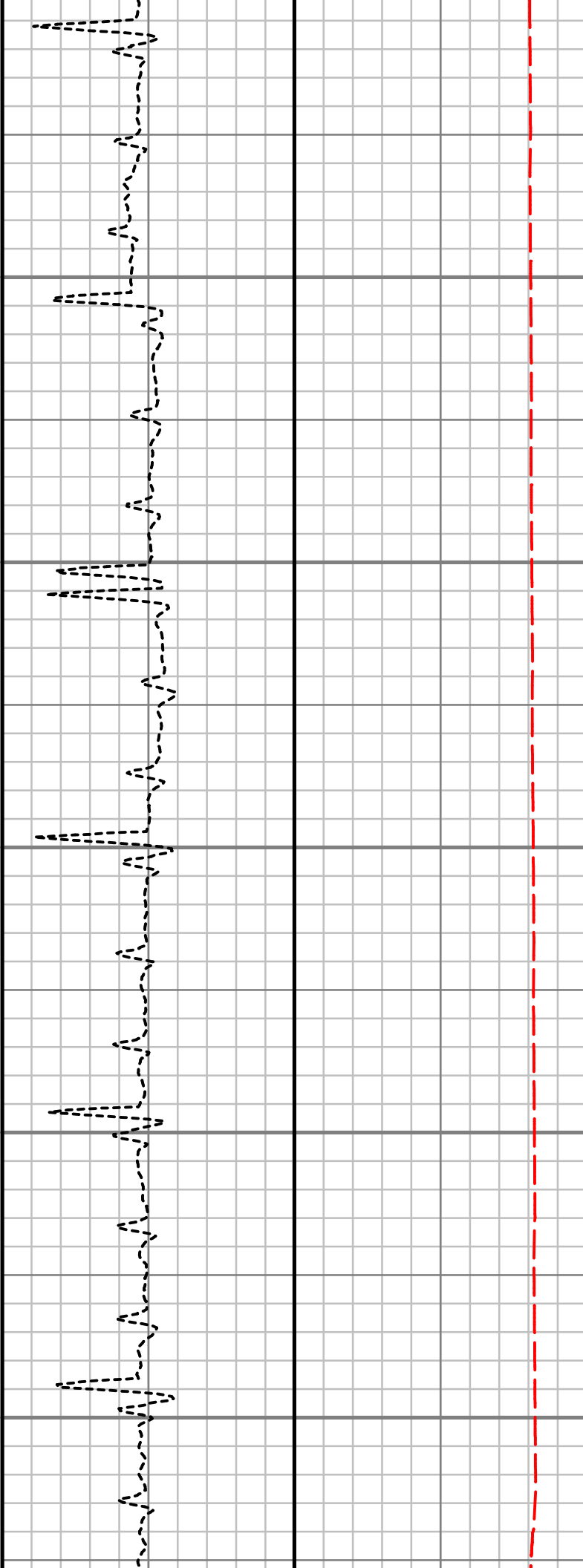
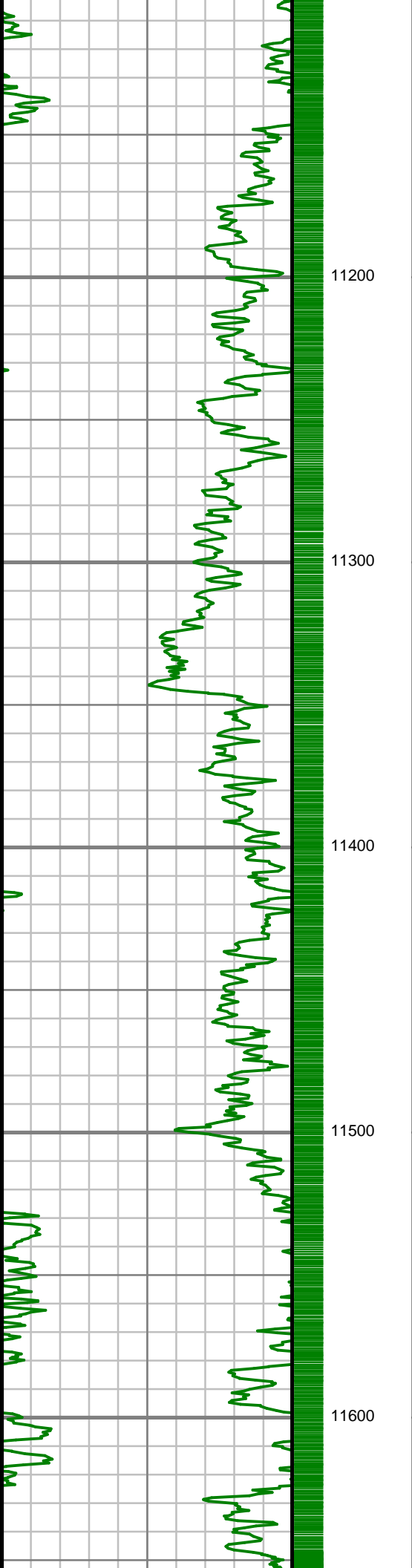
S: 100 MD: 9724.00 ft  
Inc: 88.42 deg Az:  
182.28 deg TVD:  
7321.22 ft

S: 101 MD: 9819.00 ft  
Inc: 88.86 deg Az:  
180.62 deg TVD:  
7323.47 ft

S: 102 MD: 9914.00 ft  
Inc: 90.37 deg Az:  
178.33 deg TVD:  
7324.11 ft







S: 115 MD: 11147.00 ft  
Inc: 89.16 deg Az:  
178.97 deg TVD:  
7332.56 ft

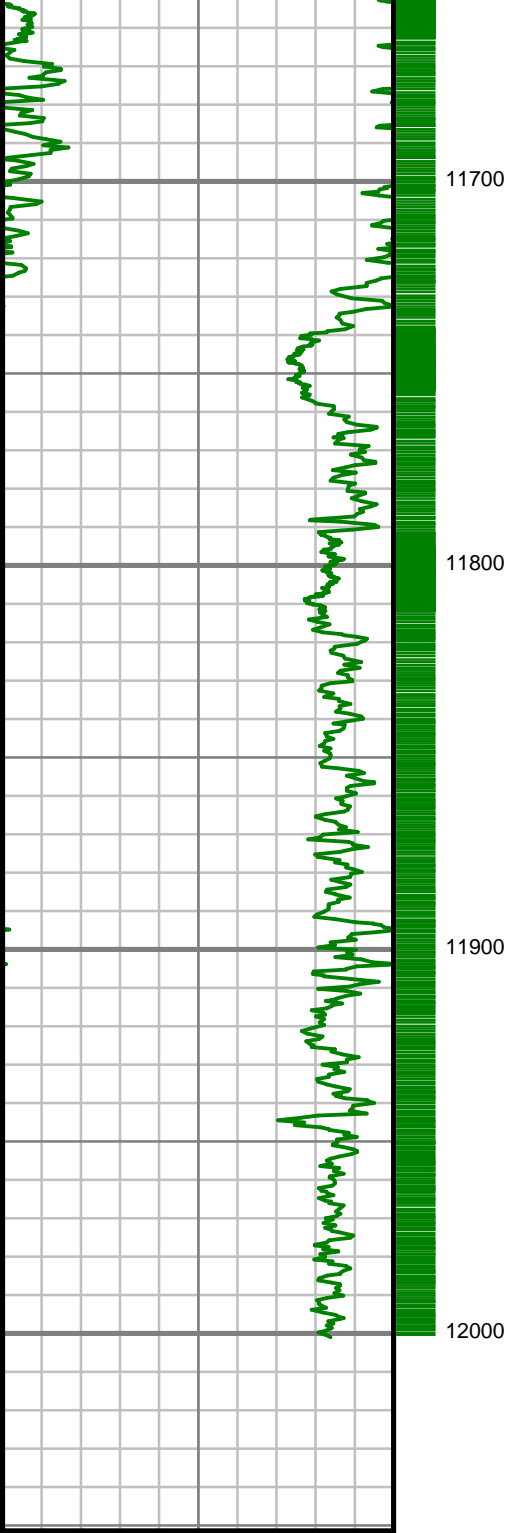
S: 116 MD: 11242.00 ft  
Inc: 89.13 deg Az:  
178.99 deg TVD:  
7333.98 ft

S: 117 MD: 11337.00 ft  
Inc: 89.30 deg Az:  
178.61 deg TVD:  
7335.28 ft

S: 118 MD: 11432.00 ft  
Inc: 89.16 deg Az:  
178.73 deg TVD:  
7336.56 ft

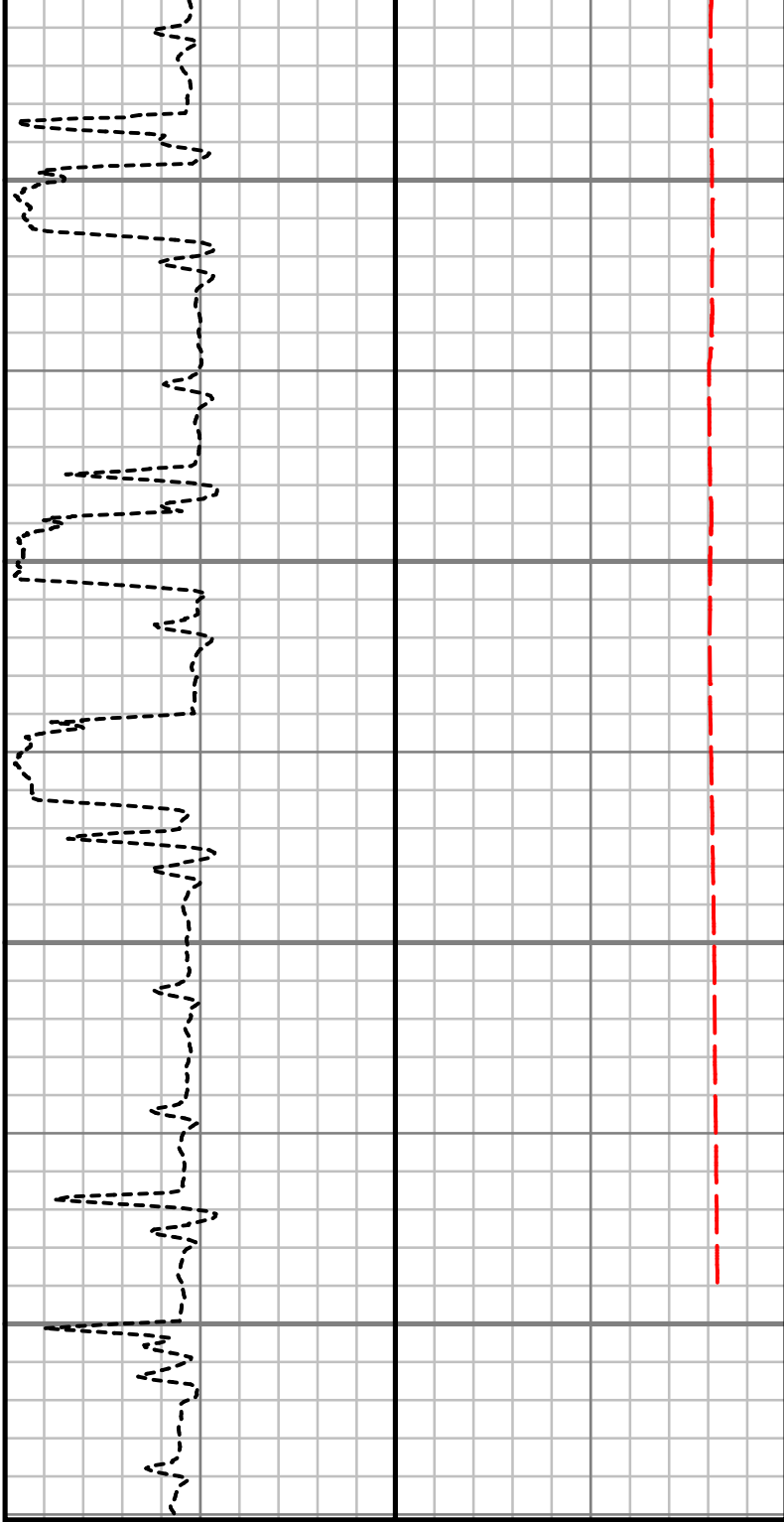
S: 119 MD: 11527.00 ft  
Inc: 89.80 deg Az:  
178.74 deg TVD:  
7337.43 ft

S: 120 MD: 11622.00 ft  
Inc: 90.60 deg Az:  
177.61 deg TVD:  
7337.10 ft



Gamma Ray (GR)		
0	Unit = aapi	150

MEASURED DEPTH  
1:600 (ft)



Rate of Penetration (ROP)		
0	Unit = ft/hr	1000

Tool Temperature (T-TEMP)		
0	Unit = °F	300

S: 121 MD: 11717.00 ft  
Inc: 92.12 deg Az:  
179.25 deg TVD:  
7334.84 ft

S: 122 MD: 11811.00 ft  
Inc: 91.81 deg Az:  
178.96 deg TVD:  
7331.61 ft

S: 123 MD: 11907.00 ft  
Inc: 90.64 deg Az:  
181.59 deg TVD:  
7329.56 ft

S: 124 MD: 11990.00 ft  
Inc: 90.57 deg Az:  
181.47 deg TVD:  
7328.68 ft

Comments
----------

## SURVEY REPORT

JOHNSON TRUST 6 PRODUCTION

JOHNSON TRUST 6 PRODUCTION

CUSTOMER  
PROJECT  
FIELD

EXTRACTION OIL AND GAS  
JOHNSON TRUST PAD  
WATTENBERG

## WELL INFORMATION

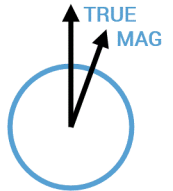
Lat/Long                    40° 8' 14.143" N, 104° 57' 34.632" W  
Northing                   1,293,308.51 ft  
Easting                    3,151,083.76 ft  
UWI                        05-123-42316-00

## MAP INFORMATION

North Reference        True North  
Grid Correction  
System                  US State Plane 1983  
Datum                   North American Datum 1983 (GRS  
1980)  
Map Zone                Colorado North: 0501

## VERTICAL SECTION REFERENCE

+N/-S                    0 ft  
+E/-W                   0 ft  
Proposal Direction    179.84°  
Calculation Method   Minimum Curvature



## GEOMAGNETIC REFERENCE INFORMATION

Local Gravity: 999.047 mG [computed]

MD	MODEL	DATE	DECLINATION	MAG TO TRUE
0-11990 ft	BGGM2015	29 Jan 2016	8.59°	add 8.59°

## WELL NOTES

## OPERATORS

J. GREGORY, M. SMITH

MD	Inc	Azim	TVD	VS	+N/-S	+E/-W	DLS
ft	deg	deg	ft	ft	ft	ft	°/100ft
0.00	0.00	0.00	0.00	0.00	0.00	0.00	Invalid
228.00	1.59	17.17	227.97	-3.02	3.02	0.93	0.70
412.00	1.03	6.23	411.92	-7.10	7.11	1.87	0.33
508.00	0.78	2.98	507.91	-8.61	8.62	1.99	0.27
603.00	0.35	12.63	602.91	-9.54	9.54	2.09	0.46
698.00	0.81	207.28	697.90	-9.23	9.23	1.85	1.21
793.00	2.44	198.32	792.86	-6.71	6.71	0.90	1.73
887.00	3.10	211.07	886.75	-2.64	2.64	-1.04	0.96
982.00	3.18	215.03	981.61	1.71	-1.72	-3.88	0.24
1077.00	2.71	228.90	1076.49	5.33	-5.35	-7.08	0.90
1171.00	2.12	238.67	1170.40	7.69	-7.72	-10.24	0.76
1266.00	2.16	255.63	1265.34	9.04	-9.08	-13.48	0.67
1360.00	2.40	273.08	1359.26	9.36	-9.41	-17.16	0.78
1456.00	2.34	301.05	1455.18	8.23	-8.29	-20.84	1.19
1534.00	2.45	314.63	1533.12	6.23	-6.30	-23.39	0.74
1663.00	3.01	339.08	1661.97	1.13	-1.20	-26.56	0.99
1757.00	2.48	346.10	1755.87	-3.15	3.08	-27.93	0.67
1852.00	3.73	39.26	1850.74	-7.53	7.46	-26.47	3.15
1947.00	5.88	48.17	1945.40	-13.16	13.10	-20.89	2.40
2041.00	7.18	57.36	2038.79	-19.52	19.48	-12.35	1.77

MD ft	Inc deg	Azim deg	TVD ft	VS ft	+N/-S ft	+E/-W ft	DLS °/100ft
2136.00	6.04	63.90	2133.16	-24.89	24.89	-2.86	1.44
2230.00	5.71	61.19	2226.67	-29.30	29.31	5.68	0.46
2325.00	7.14	63.39	2321.07	-34.19	34.23	15.09	1.53
2420.00	9.10	63.69	2415.11	-40.13	40.21	27.10	2.07
2516.00	13.40	62.25	2509.25	-48.63	48.75	43.76	4.49
2611.00	14.25	61.43	2601.49	-59.29	59.47	63.77	0.92
2705.00	14.36	58.22	2692.58	-70.91	71.15	83.84	0.85
2800.00	15.52	57.51	2784.37	-83.89	84.18	104.58	1.24
2894.00	14.37	58.33	2875.19	-96.71	97.06	125.11	1.24
2989.00	16.08	58.16	2966.85	-109.78	110.19	146.33	1.80
3084.00	17.10	59.34	3057.89	-123.78	124.26	169.52	1.13
3179.00	16.38	55.83	3148.87	-138.37	138.91	192.62	1.31
3274.00	15.90	50.68	3240.13	-154.09	154.68	213.78	1.59
3369.00	15.42	45.69	3331.60	-171.10	171.76	232.89	1.51
3464.00	15.49	48.97	3423.17	-188.20	188.91	251.49	0.92
3558.00	14.88	48.51	3513.89	-204.39	205.14	270.00	0.66
3653.00	15.17	48.83	3605.64	-220.60	221.41	288.49	0.32
3747.00	16.76	49.00	3696.01	-237.53	238.40	307.98	1.69
3843.00	18.10	50.32	3787.60	-256.07	257.00	329.91	1.45
3937.00	18.25	56.73	3876.92	-273.41	274.40	353.45	2.13

MD ft	Inc deg	Azim deg	TVD ft	VS ft	+N/-S ft	+E/-W ft	DLS °/100ft
4032.00	18.86	56.23	3966.98	-290.04	291.10	378.66	0.66
4126.00	18.90	53.62	4055.92	-307.45	308.57	403.54	0.90
4221.00	17.13	55.53	4146.26	-324.42	325.62	427.47	1.97
4316.00	16.75	53.65	4237.14	-340.39	341.65	450.02	0.70
4411.00	15.13	55.48	4328.49	-355.47	356.79	471.27	1.78
4506.00	14.39	50.11	4420.36	-370.01	371.38	490.54	1.64
4601.00	17.63	47.66	4511.66	-387.22	388.65	510.24	3.48
4696.00	20.19	46.90	4601.53	-408.06	409.55	532.85	2.71
4790.00	17.60	40.21	4690.46	-429.94	431.49	553.87	3.59
4885.00	15.71	34.93	4781.48	-451.41	453.00	570.51	2.55
4979.00	16.66	37.10	4871.75	-472.55	474.18	585.93	1.20
5073.00	16.95	42.03	4961.75	-493.42	495.11	603.23	1.54
5168.00	14.57	40.93	5053.17	-512.69	514.42	620.33	2.52
5263.00	13.36	36.82	5145.36	-530.46	532.24	634.73	1.64
5357.00	14.36	37.90	5236.62	-548.32	550.13	648.41	1.09
5452.00	15.14	44.54	5328.50	-566.41	568.27	664.34	1.96
5546.00	14.75	44.69	5419.32	-583.62	585.52	681.36	0.41
5641.00	14.91	48.02	5511.16	-600.35	602.30	698.96	0.91
5736.00	13.23	55.68	5603.31	-614.60	616.61	717.03	2.64
5831.00	9.70	52.48	5696.40	-625.57	627.62	732.36	3.77

MD ft	Inc deg	Azim deg	TVD ft	VS ft	+N/-S ft	+E/-W ft	DLS °/100ft
5925.00	7.98	49.06	5789.28	-634.64	636.71	743.57	1.92
6020.00	6.79	62.30	5883.50	-641.54	643.65	753.53	2.17
6115.00	5.13	60.23	5977.98	-646.24	648.37	762.18	1.77
6210.00	3.66	53.70	6072.70	-650.12	652.27	768.31	1.63
6305.00	2.73	53.46	6167.55	-653.25	655.41	772.57	0.97
6400.00	1.89	57.89	6262.47	-655.42	657.59	775.71	0.91
6494.00	1.52	52.78	6356.43	-656.99	659.16	778.02	0.42
6588.00	0.97	50.75	6450.41	-658.24	660.42	779.62	0.58
6683.00	0.51	28.36	6545.40	-659.12	661.30	780.45	0.57
6778.00	11.28	173.60	6639.81	-650.23	652.42	781.69	12.32
6873.00	19.69	175.88	6731.28	-624.99	627.18	783.88	8.88
6968.00	24.10	178.90	6819.41	-589.60	591.80	785.40	4.80
7063.00	30.62	183.35	6903.74	-546.01	548.20	784.36	7.19
7159.00	33.89	175.69	6984.95	-494.87	497.07	784.94	5.44
7254.00	40.50	174.53	7060.59	-437.68	439.89	789.88	7.00
7350.00	53.79	175.11	7125.74	-367.73	369.95	796.18	13.86
7445.00	62.56	179.71	7175.80	-287.19	289.42	799.67	10.10
7540.00	72.07	180.25	7212.40	-199.64	201.87	799.68	10.02
7635.00	72.15	181.49	7241.58	-109.25	111.48	798.30	1.24
7730.00	76.11	178.64	7267.56	-17.90	20.13	798.22	5.07

MD ft	Inc deg	Azim deg	TVD ft	VS ft	+N/-S ft	+E/-W ft	DLS °/100ft
7825.00	86.41	175.58	7281.97	75.75	-73.51	802.99	11.30
7920.00	89.16	177.64	7285.64	170.52	-168.26	808.60	3.61
8015.00	89.56	177.12	7286.70	265.42	-263.15	812.95	0.70
8109.00	89.60	178.54	7287.39	359.36	-357.08	816.51	1.51
8203.00	88.15	179.03	7289.24	453.32	-451.04	818.51	1.63
8297.00	87.85	178.10	7292.52	547.24	-544.95	820.86	1.03
8393.00	88.15	177.81	7295.87	643.13	-640.83	824.28	0.44
8487.00	89.70	178.83	7297.64	737.08	-734.77	827.03	1.97
8582.00	90.47	178.45	7297.50	832.05	-829.74	829.28	0.91
8677.00	90.20	180.67	7296.94	927.04	-924.73	830.01	2.35
8772.00	90.03	180.89	7296.75	1022.03	-1019.72	828.71	0.30
8867.00	88.93	182.30	7297.61	1116.98	-1114.68	826.06	1.89
8962.00	88.05	183.39	7300.12	1211.81	-1209.52	821.34	1.47
9057.00	87.58	183.79	7303.74	1306.54	-1304.27	815.40	0.64
9152.00	87.65	181.56	7307.69	1401.34	-1399.08	810.97	2.34
9247.00	87.52	180.44	7311.69	1496.23	-1493.98	809.31	1.19
9343.00	88.76	179.75	7314.81	1592.18	-1589.92	809.16	1.47
9439.00	89.97	180.36	7315.88	1688.17	-1685.92	809.07	1.41
9534.00	88.83	179.75	7316.88	1783.16	-1780.91	808.98	1.36
9629.00	88.76	180.21	7318.88	1878.14	-1875.89	809.01	0.49



MD	Inc	Azim	TVD	VS	+N/-S	+E/-W	DLS
ft	deg	deg	ft	ft	ft	ft	°/100ft
9724.00	88.42	182.28	7321.22	1973.08	-1970.83	806.95	2.20
9819.00	88.86	180.62	7323.47	2068.01	-2065.77	804.54	1.80
9914.00	90.37	178.33	7324.11	2162.99	-2160.75	805.41	2.89
10008.00	90.44	177.55	7323.45	2256.94	-2254.69	808.80	0.84
10103.00	90.94	176.74	7322.30	2351.83	-2349.56	813.53	1.00
10198.00	91.71	176.79	7320.11	2446.66	-2444.39	818.89	0.81
10292.00	91.48	176.09	7317.50	2540.46	-2538.17	824.73	0.78
10388.00	91.24	177.73	7315.22	2636.31	-2634.00	829.90	1.73
10482.00	90.50	178.92	7313.79	2730.26	-2727.95	832.64	1.49
10577.00	88.19	179.48	7314.88	2825.24	-2822.92	833.97	2.50
10671.00	88.12	180.20	7317.90	2919.19	-2916.87	834.23	0.77
10767.00	88.05	179.30	7321.11	3015.14	-3012.82	834.65	0.94
10862.00	87.74	179.62	7324.60	3110.07	-3107.75	835.55	0.47
10957.00	87.65	179.59	7328.41	3204.99	-3202.67	836.20	0.10
11052.00	89.09	178.87	7331.11	3299.95	-3297.62	837.48	1.69
11147.00	89.16	178.97	7332.56	3394.92	-3392.59	839.26	0.12
11242.00	89.13	178.99	7333.98	3489.90	-3487.57	840.95	0.04
11337.00	89.30	178.61	7335.28	3584.88	-3582.54	842.94	0.44
11432.00	89.16	178.73	7336.56	3679.85	-3677.50	845.15	0.19
11527.00	89.80	178.74	7337.43	3774.83	-3772.47	847.26	0.67

MD ft	Inc deg	Azim deg	TVD ft	VS ft	+N/-S ft	+E/-W ft	DLS °/100ft
11622.00	90.60	177.61	7337.10	3869.78	-3867.42	850.29	1.46
11717.00	92.12	179.25	7334.84	3964.72	-3962.36	852.89	2.35
11811.00	91.81	178.96	7331.61	4058.66	-4056.29	854.36	0.45
11907.00	90.64	181.59	7329.56	4154.62	-4152.25	853.89	3.00
11990.00	90.57	181.47	7328.68	4237.58	-4235.22	851.68	0.16



GAMMA RAY

2" = 100' FEET MD