



Scale: 5" / 100'
Measured Depth Log

Well Name Johnson Trust 6

Location Sec. 13-T2N-R68W

State Colorado

County Weld

Country USA

Rig Number Patterson UTI 346

API Number 05-123-42316-00

AFE # NA

Geographic Region DJ Basin

Field Wattenberg

Spud Date 1/29/2016

Drilling Completed 1/31/2016

Surface Coordinates SHL: 2125' FSL, 388' FWL Sec. 13 T2N R68W

Lat: 40° 8' 14.143 N
Long: 104° 57' 34.632 W

Bottom Hole Coordinates PBHL:

Lat: 40° 7' 31.192 N
Long: 104° 57' 23.832 W

Ground Elevation 4,924'

K.B. Elevation 4,948.5'

Logged Interval 5,000' **To** 6,680'

Total Depth 12,050'

Formation Niobrara B Chalk

Type of Drilling Fluid Oil Based - invert

Operator

Company Extaction Oil & Gas

Address 1888 Sherman St., Suite 200
Denver, CO 80203

Geologist

Name Vivian Spiess / Jared Rouse

Zone Color Coding

Oil Condensate Gas

Name Vivian Express / Sured Road

Company Extraction Oil & Gas

Address 1888 Sherman St., Suite 200
Denver, CO 80203

Note

Error

Core

Water

Pressure

Seal

Other

Equipment ML-113

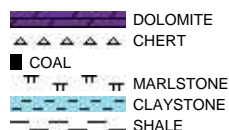
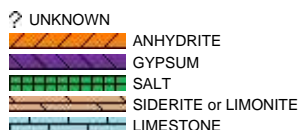
Comments Start: 1-30-16
TD: 1-31-16
Standby: 1-29-16

Services Provided 2-man Logging
On Site Geosteering

Logger Names Dominic Pitre / Nicholas Watkiins

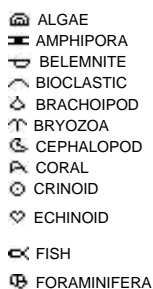
Address Empirica, LLC.
6360 W Sam Houston Pkwy N
Suite 100
Houston, TX 77041

Rock Types



Accessories

Fossils



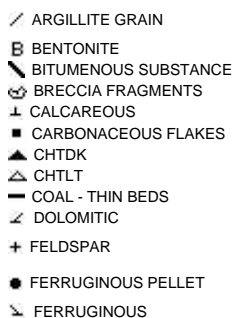
Fossil



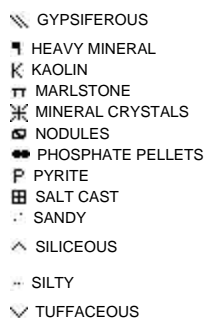
Minerals



Argillaceous



Glauconite

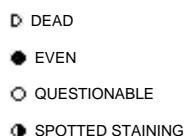


Stringer



Other Symbols

Oil Show



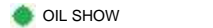
Organic



Engineering



Formation Top



Rounding



Lithographic



Sorting

Porosity

- E EARTHY
- F FENESTRAL
- F FRACTURE
- X INTERCRYSTALLINE
- Φ INTEROOLITIC
- MOLDIC

- CASING
- CONNECTION (LEFT)
- CONNECTION (RIGHT)
- CONNECTION GAS
- CORE - LOST
- CORE - RECOVERED
- DST INTERVAL
- FAULT

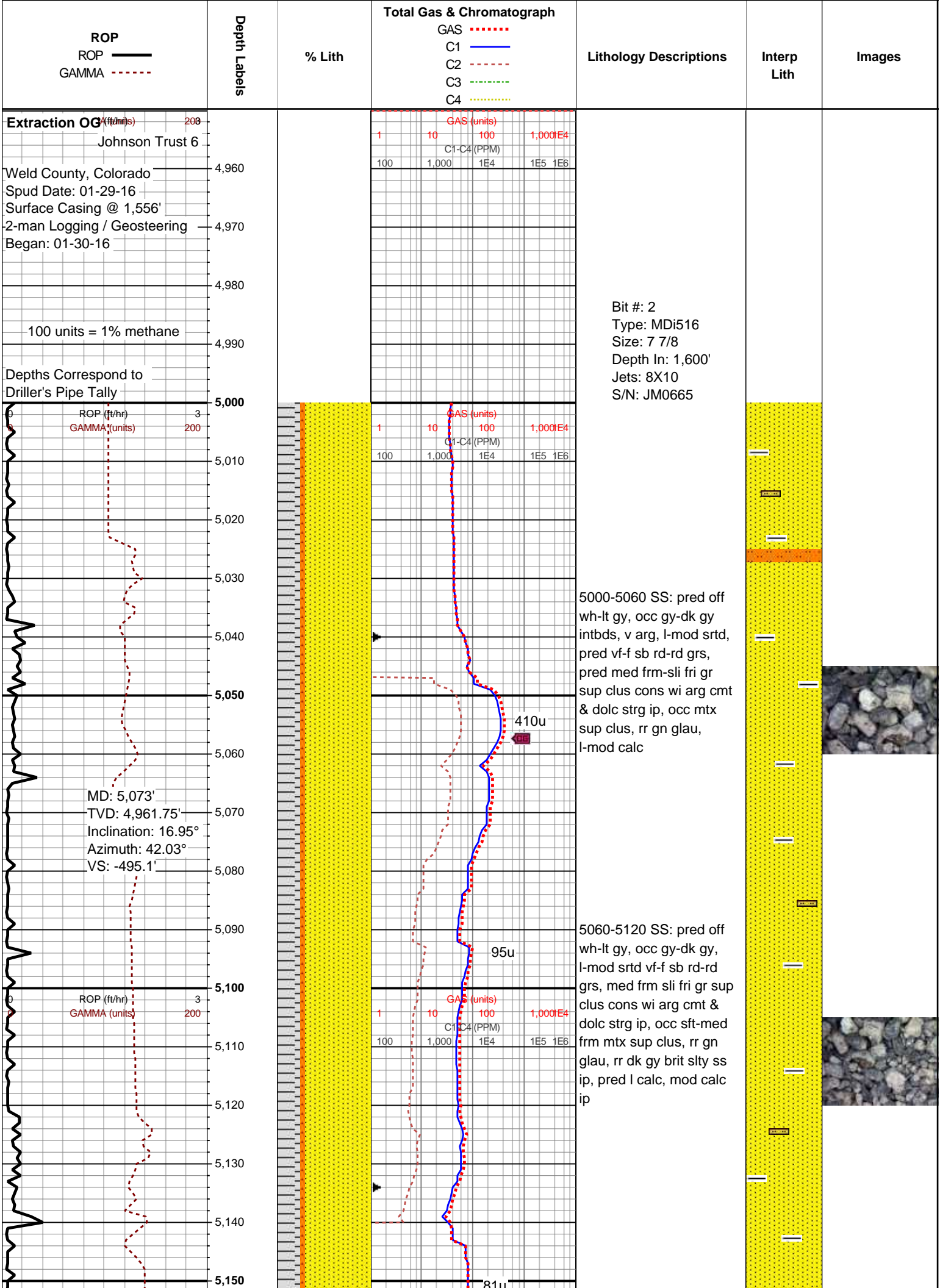
- REVERSE FAULT
- SIDEWALL CORE (LEFT)
- SIDEWALL CORE (RIGHT)
- SLIDE
- SURVEY
- TRIP GAS
- WIRELINE TESTED - LEFT
- WIRELINE TESTED - RT

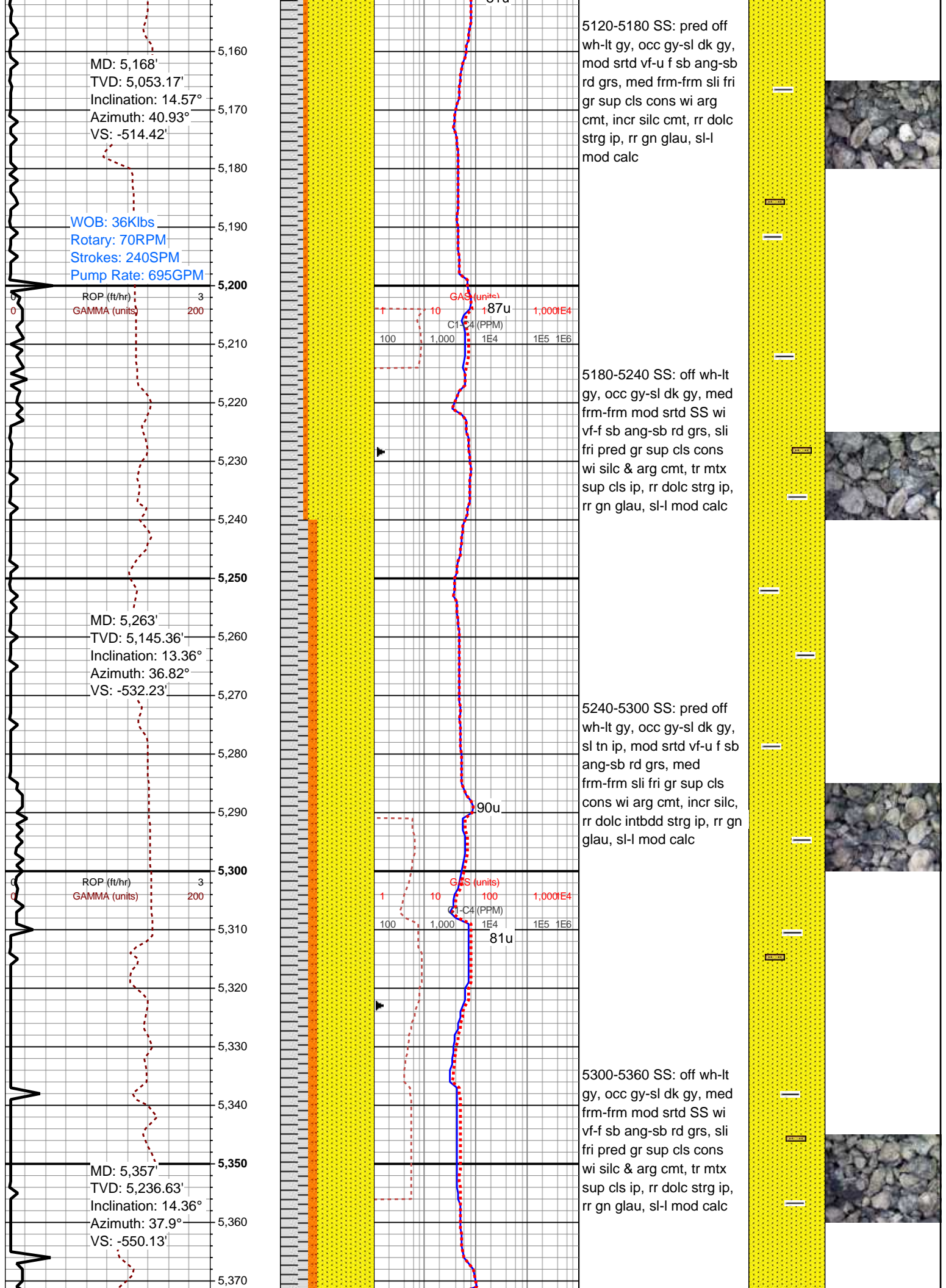
Textures

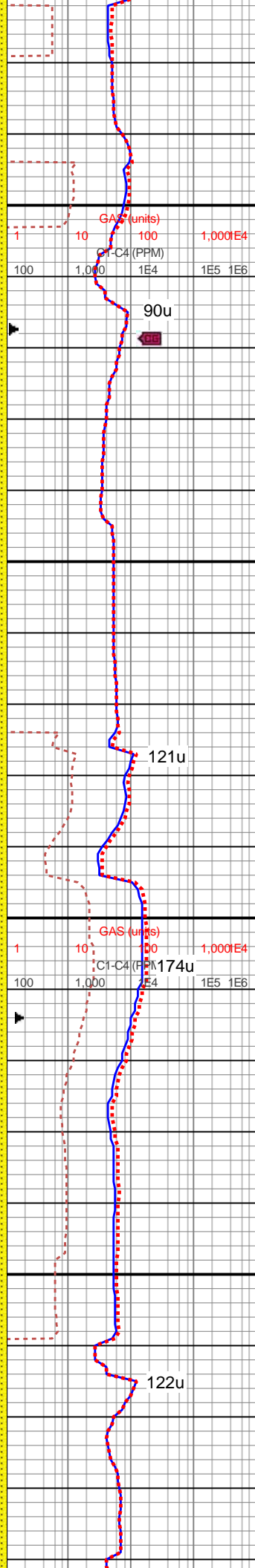
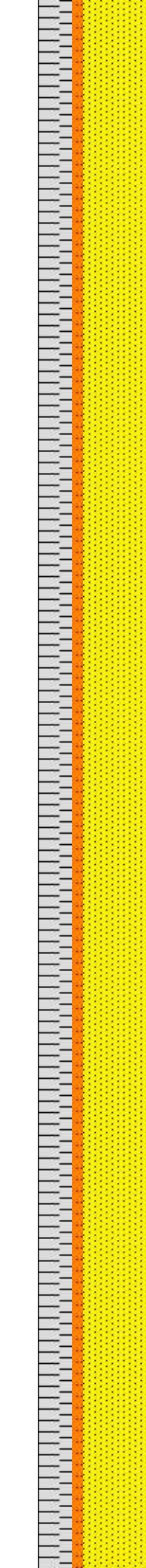
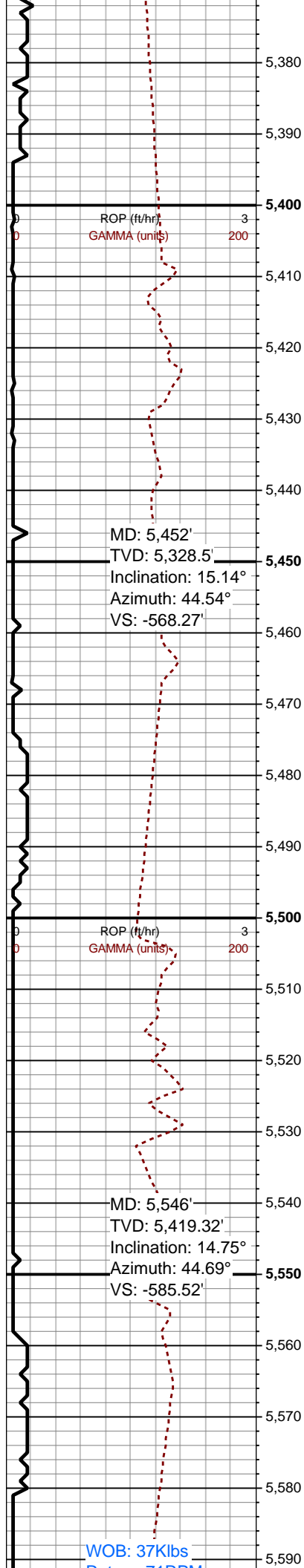
- BOUNDSTONE
- CHALKY
- CRYPTOXLN
- E EARTHY
- F FINELYXLN
- GRAINSTONE

Sorting

- MODERATE
- POOR
- WELL





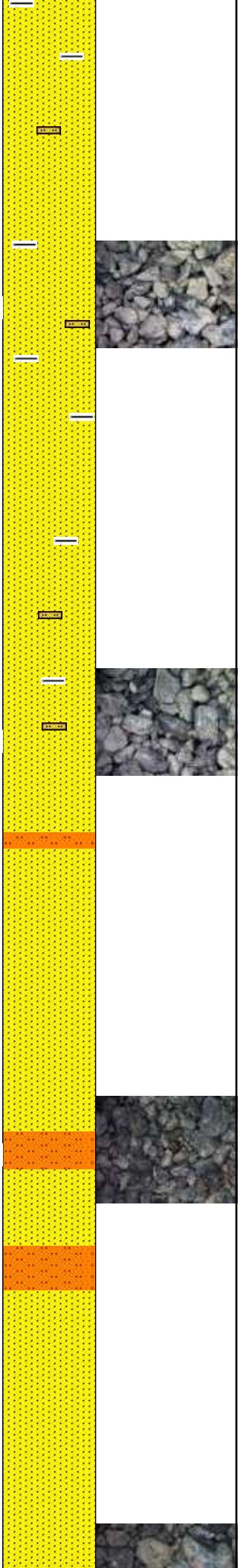


5360-5420 SS (90%): off
wh-lt gy, occ gy-dk gy brn,
mod srted vf-f sb ang-sb
rd grs, med frm-frm sli fri
mtx-gr sup cls cons wi
arg-silc cmt ip, rr dolc
strg ip, tr gn glau, sl-l
calc, grdg to dk gy sdy
SLTST (10%): dk gy-dk bl
gy, med-hi fis ang-sb
plty-plty ctgs wi silc cmt, tr
vf pyr, non calc

5420-5480 SS (90%): off
wh-lt gy, gy brn ip, pred
vf-f mod srted sb rd grs,
med frm-frm sli fri gr-mtx
sup cls cons wi arg cmt,
rr silc ip, tr vf pyr, rr gn
glau, sl-l calc, wi 10%
SLTST: pred gy-dk gy
ang-plty ctgs cons wi silc
cmt, tr-rr vf pyr strg ip, non
calc

5480-5540 SS (90%): off
wh-lt gy, gy brn ip, pred
vf-f mod srted sb rd grs,
med frm-frm sli fri gr-mtx
sup cls cons wi arg cmt,
rr silc ip, tr vf pyr, rr gn
glau, sl-l calc, wi 10%
SLTST: pred gy-dk gy
ang-plty ctgs cons wi silc
cmt, tr-rr vf pyr strg ip, non
calc

5540-5600 SS (90%): off
wh-lt gy, gy brn ip, pred
vf-f mod srted sb rd grs,
med frm-frm sli fri gr-mtx
sup cls cons wi arg cmt,
rr silc ip, tr vf pyr, rr gn
glau, sl-l calc, wi 10%
SLTST: pred gy-dk gy
ang-plty ctgs cons wi silc



Rotary: 71RPM
Strokes: 139SPM
Pump Rate: 696GPM

ROP (ft/hr)
GAMMA (units)

MD: 5,641'
TVD: 5,511.16'
Inclination: 14.91°
Azimuth: 48.02°
VS: -602.29'

ROP (ft/hr)
GAMMA (units)

MD: 5,736'
TVD: 5,603.31'
Inclination: 13.23°
Azimuth: 55.68°
VS: -616.6'

WOB: 41Klbs
Rotary: 70RPM
Strokes: 240SPM
Pump Rate: 696GPM

ROP (ft/hr)
GAMMA (units)

GAS (units)
C1-C4 (PPM)

DP @ 5600'

150u

101u

141u

124u

5540-5600 SS: pred med
gy- gy, ip tn- bf, mot thru,
pred frm- hd clus, tr sl sft,
pred mod srted, pred vf
grd sd, occ f grd, sb rd-
sb ang grs, pred gr sup
clus cons wi arg- sil cmt,
sme v sl calc cmt, occ sl
silty mtx sup clus, tr sl
silty- sl shy intbds, tr glau,
lith frags

5660-5720 SS: pred med
gy- gy, ip tn- bf, mot thru,
pred frm- hd clus, tr sl sft,
pred mod srted, pred vf
grd sd, occ f grd, sb rd-
sb ang grs, pred gr sup
clus cons wi arg- sil cmt,
sme v sl calc cmt, occ sl
silty mtx sup clus, tr sl
silty- sl shy intbds, tr glau,
lith frags

5720-5780 SS: pred med
gy- gy, ip tn- bf, mot thru,
pred frm- hd clus, tr sl sft,
pred mod- p srted, pred vf
grd sd, sme f grd, sb rd-
sb ang grs, pred gr sup
clus cons wi arg- sil cmt,
sme v sl calc cmt, ip slty
mtx sup clus, occ sl slty-
sl shy intbds, tr glau, lith
frags rr pyr

5780-5840 SS: pred med
gy- gy, ip tn- bf, mot thru,

