

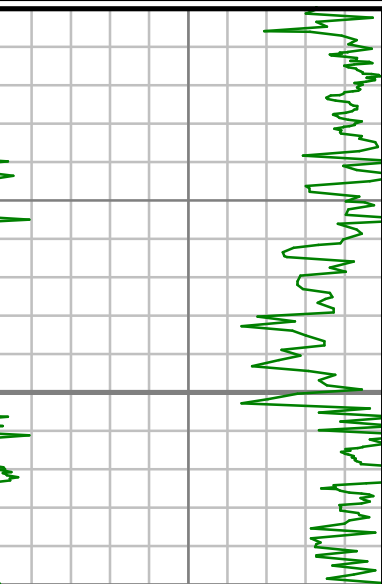


[illegible]

All interpretations are opinions based on inferences from electrical or other measurements and we cannot, and do not guarantee the accuracy or correctness of any interpretations, and we shall not, except in the case of gross or willful negligence on our part, be liable or responsible for any loss, costs, damages or expenses incurred or sustained by anyone resulting from any interpretation made by any of our officers, agents or employees. These interpretations are also subject to our general terms and conditions as set out in our current price schedule.

EXTRACTION OIL & GAS  
JOHNSON TRUST 5  
WATTENBERG FIELD  
WELD COUNTY, COLORADO  
API # 05-123-42321-00

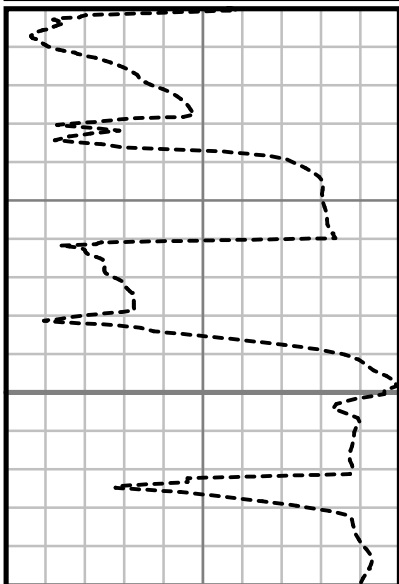
Gamma Ray (GR)  
Unit = aapi



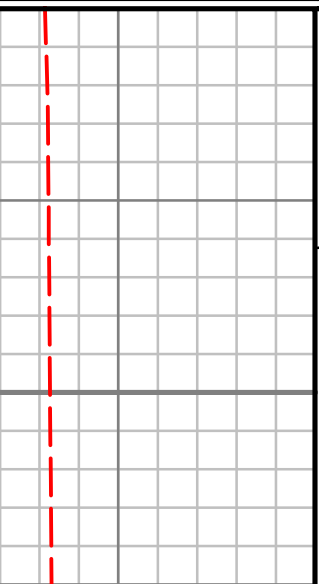
MEASURED DEPTH  
1:600 (ft)

1700

Rate of Penetration (ROP)  
Unit = ft/hr



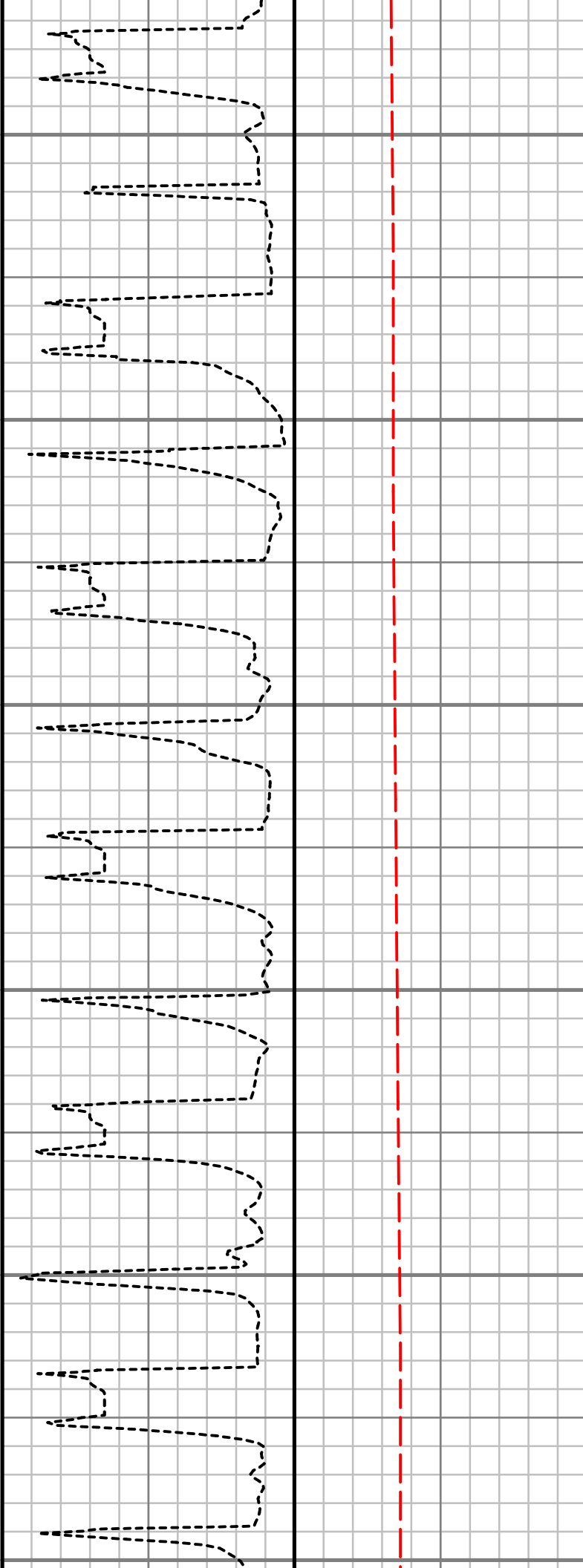
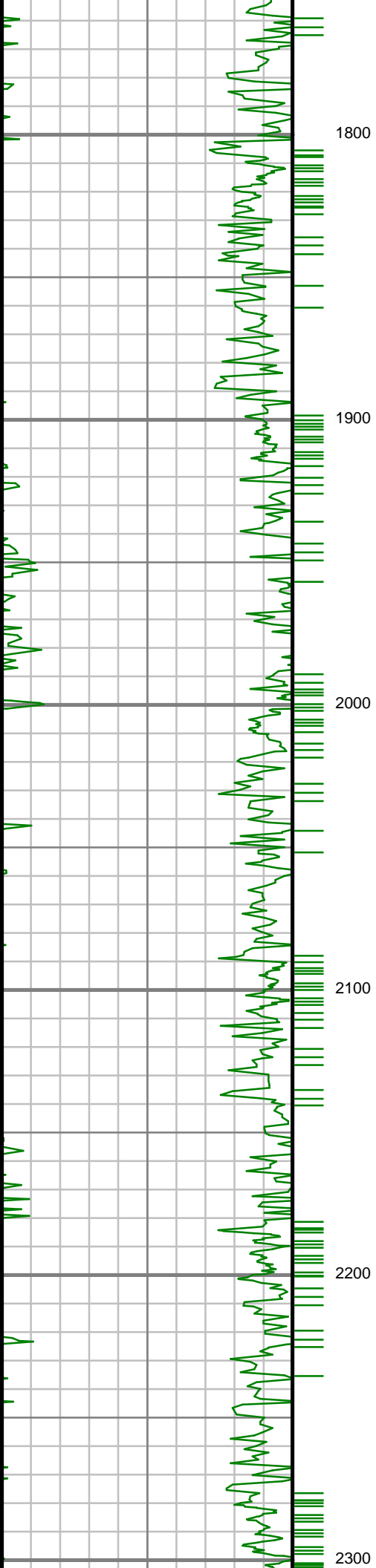
Tool Temperature (T-TEMP)  
Unit = °F



Comments

S: 16 MD: 1600.00 ft  
Inc: 1.09 deg Az:  
201.31 deg TVD:  
1599.73 ft

S: 17 MD: 1663.00 ft  
Inc: 1.11 deg Az: 78.96  
deg TVD: 1662.73 ft



S: 18 MD: 1757.00 ft  
Inc: 3.79 deg Az: 64.24  
deg TVD: 1756.63 ft

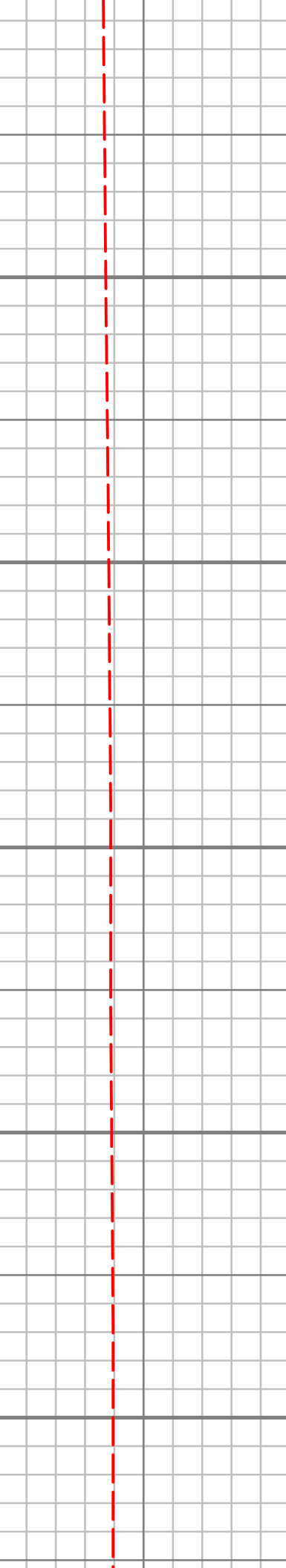
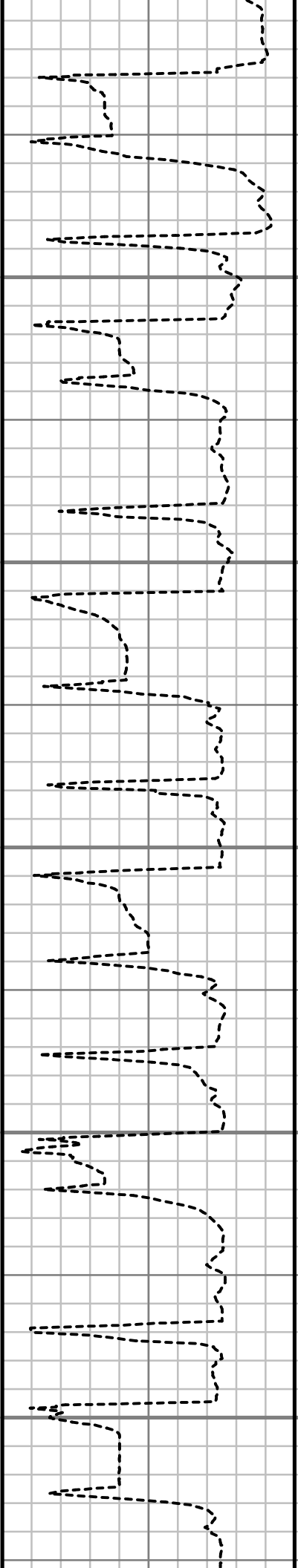
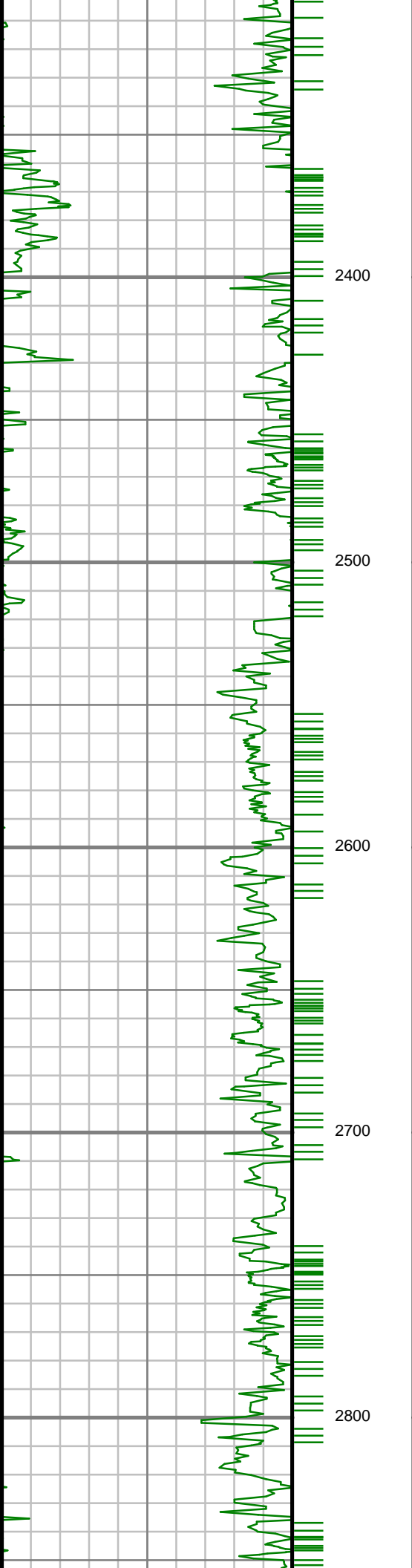
S: 19 MD: 1852.00 ft  
Inc: 5.95 deg Az: 62.44  
deg TVD: 1851.28 ft

S: 20 MD: 1947.00 ft  
Inc: 7.99 deg Az: 62.77  
deg TVD: 1945.58 ft

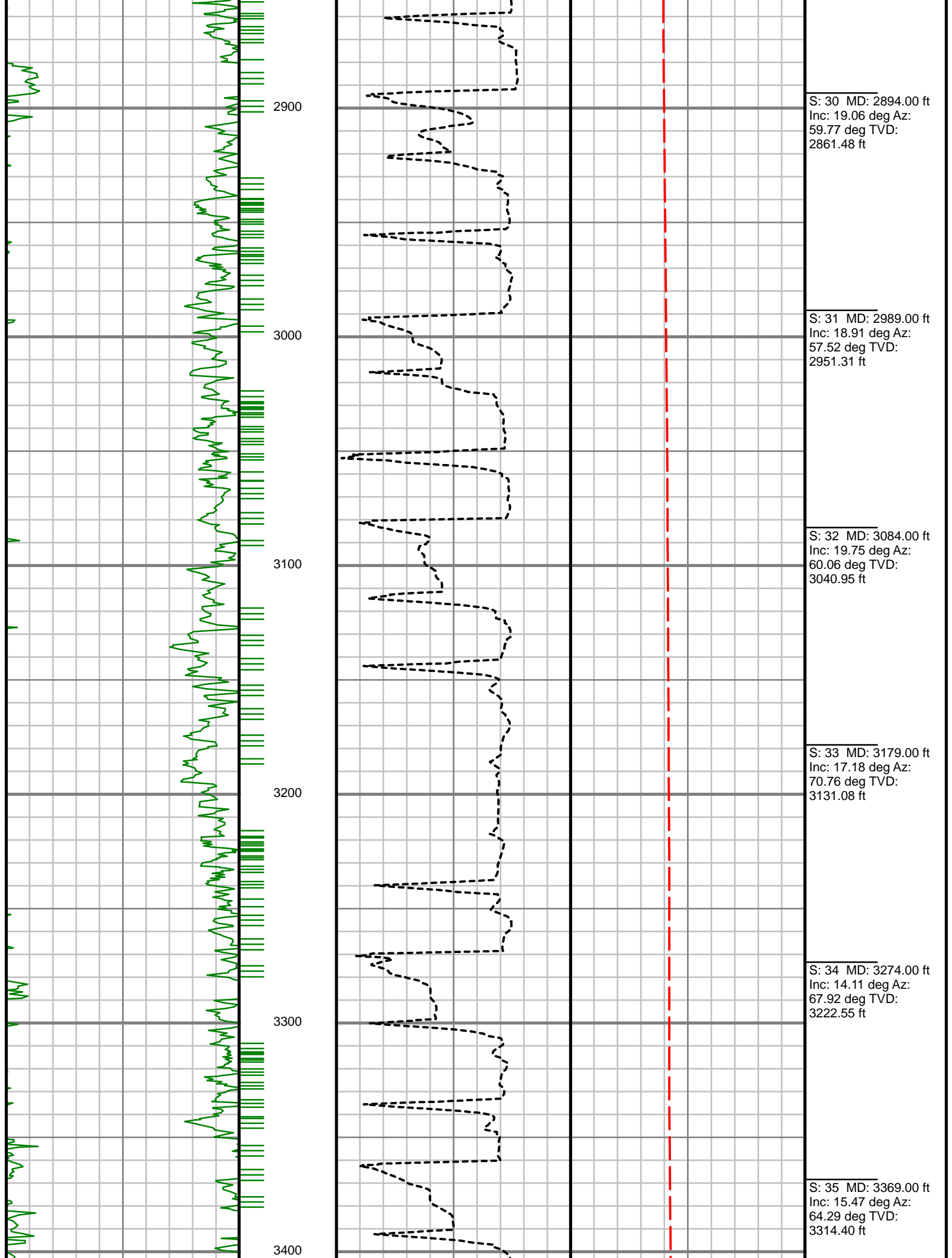
S: 21 MD: 2041.00 ft  
Inc: 9.61 deg Az: 65.45  
deg TVD: 2038.47 ft

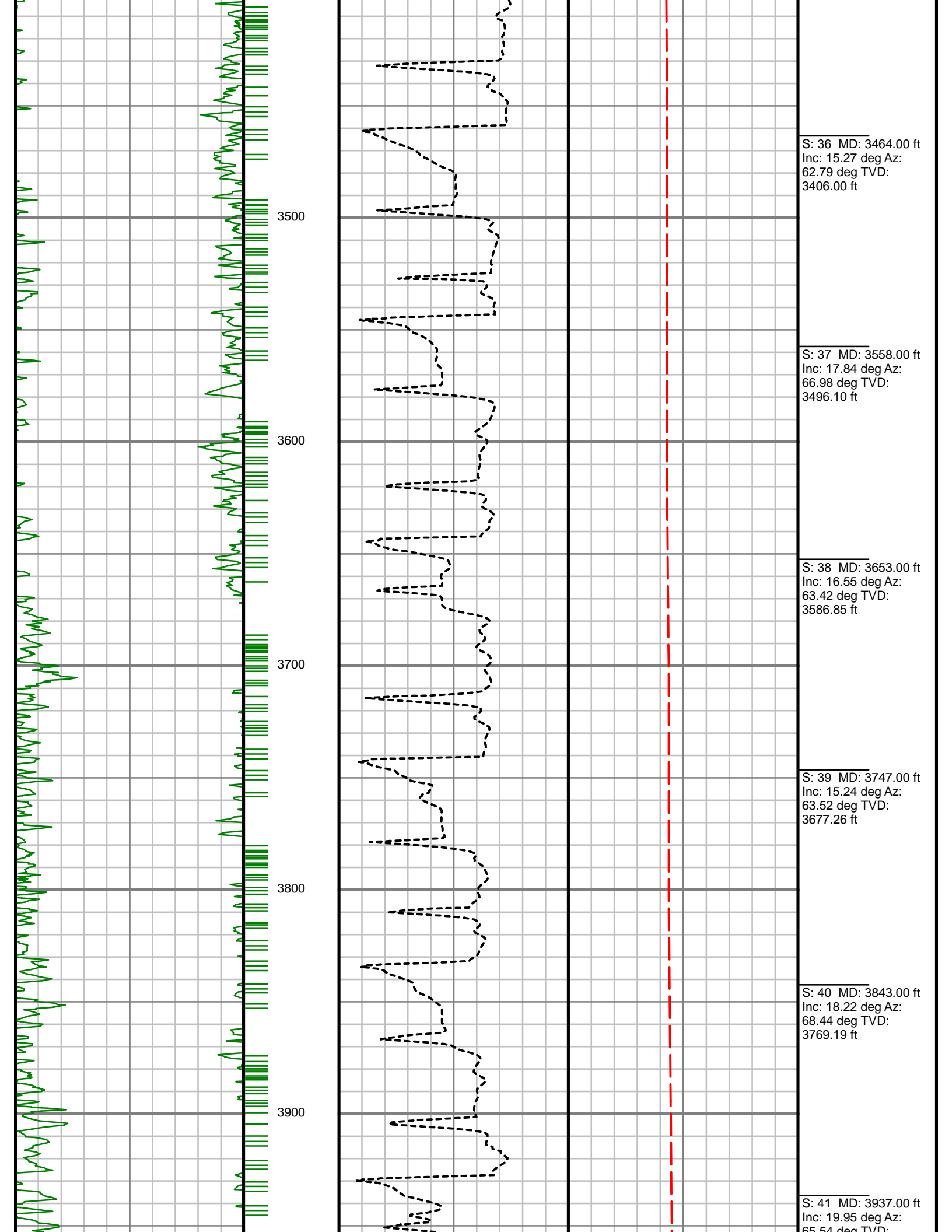
S: 22 MD: 2136.00 ft  
Inc: 10.60 deg Az:  
64.62 deg TVD:  
2131.99 ft

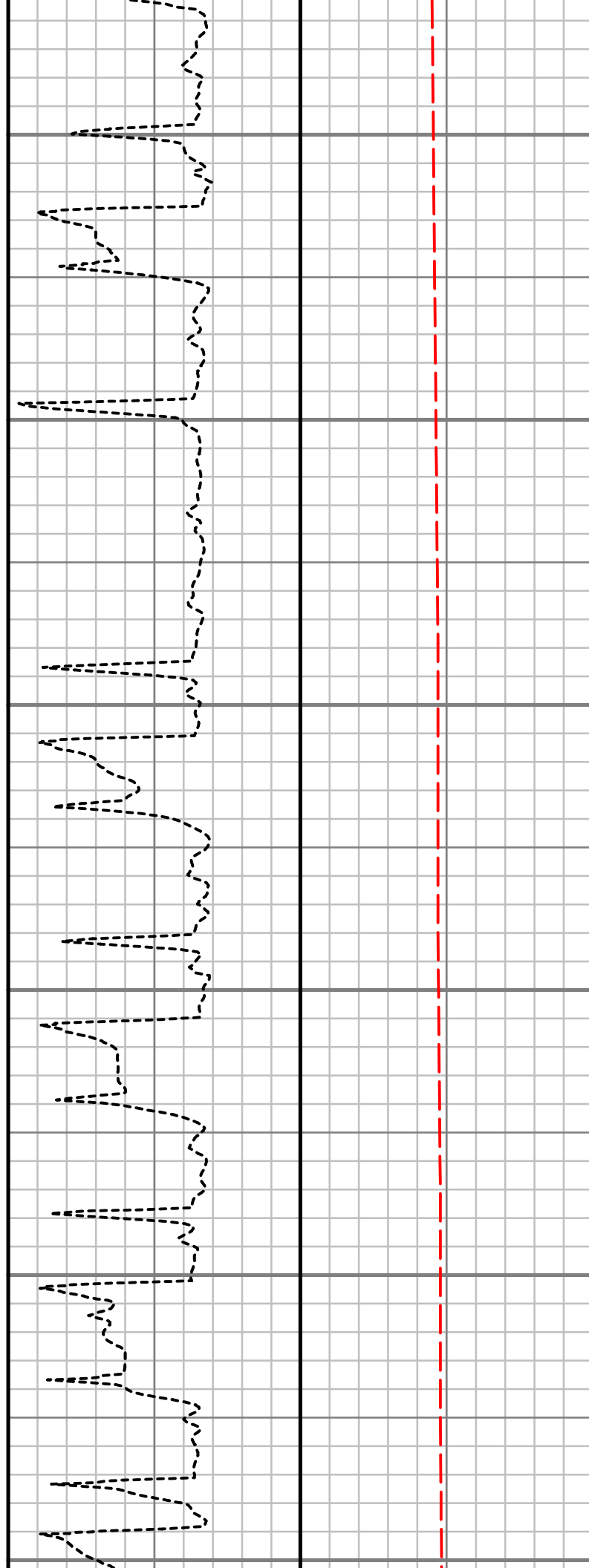
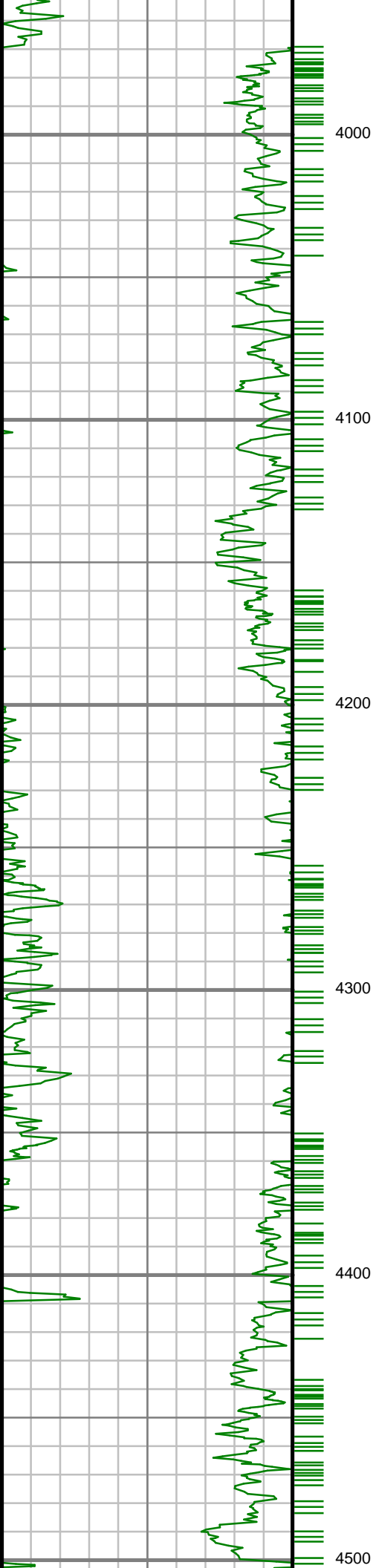
S: 23 MD: 2230.00 ft  
Inc: 10.79 deg Az:  
65.56 deg TVD:  
2224.36 ft



S: 24 MD: 2325.00 ft Inc: 10.94 deg Az: 67.68 deg TVD: 2317.66 ft
S: 25 MD: 2420.00 ft Inc: 14.01 deg Az: 67.37 deg TVD: 2410.40 ft
S: 26 MD: 2516.00 ft Inc: 15.12 deg Az: 62.57 deg TVD: 2503.32 ft
S: 27 MD: 2611.00 ft Inc: 18.15 deg Az: 54.56 deg TVD: 2594.35 ft
S: 28 MD: 2705.00 ft Inc: 19.97 deg Az: 57.80 deg TVD: 2683.19 ft
S: 29 MD: 2800.00 ft Inc: 19.26 deg Az: 58.04 deg TVD: 2772.68 ft







S: 34 MD: 4032.00 ft  
Inc: 20.06 deg Az:  
61.21 deg TVD:  
3858.02 ft

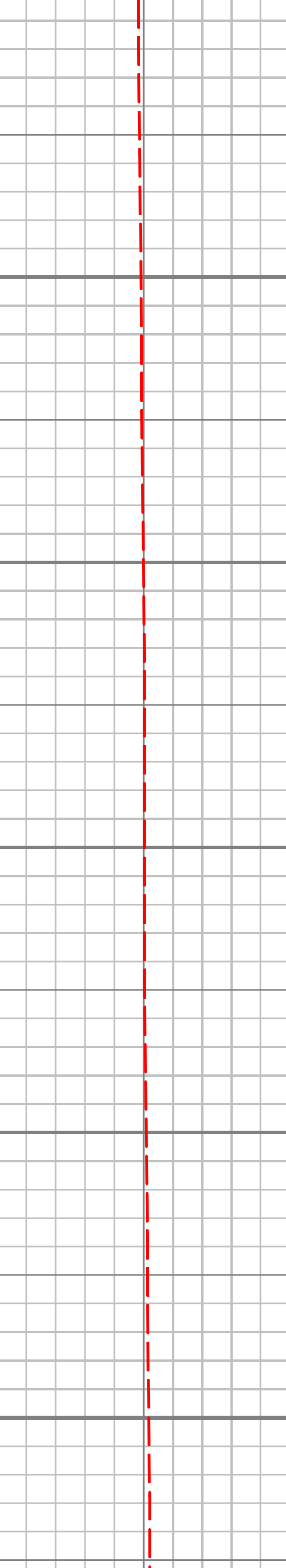
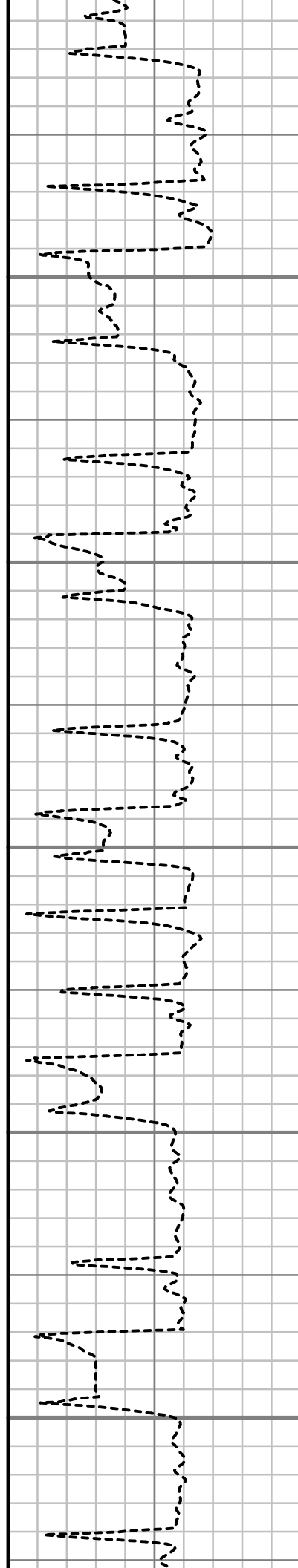
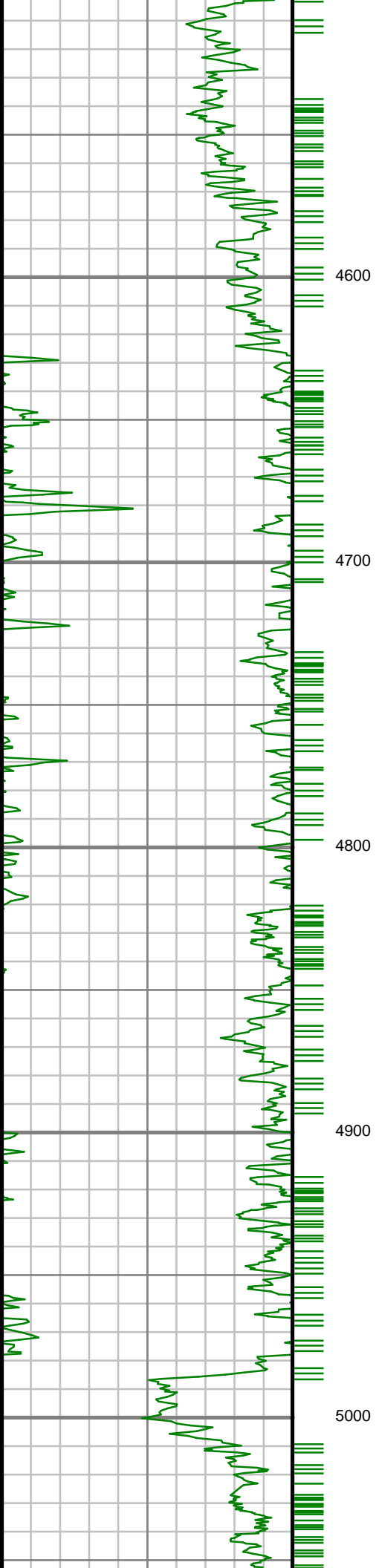
S: 42 MD: 4032.00 ft  
Inc: 20.06 deg Az:  
61.21 deg TVD:  
3947.29 ft

S: 43 MD: 4126.00 ft  
Inc: 18.27 deg Az:  
58.69 deg TVD:  
4036.08 ft

S: 44 MD: 4221.00 ft  
Inc: 17.83 deg Az:  
58.28 deg TVD:  
4126.40 ft

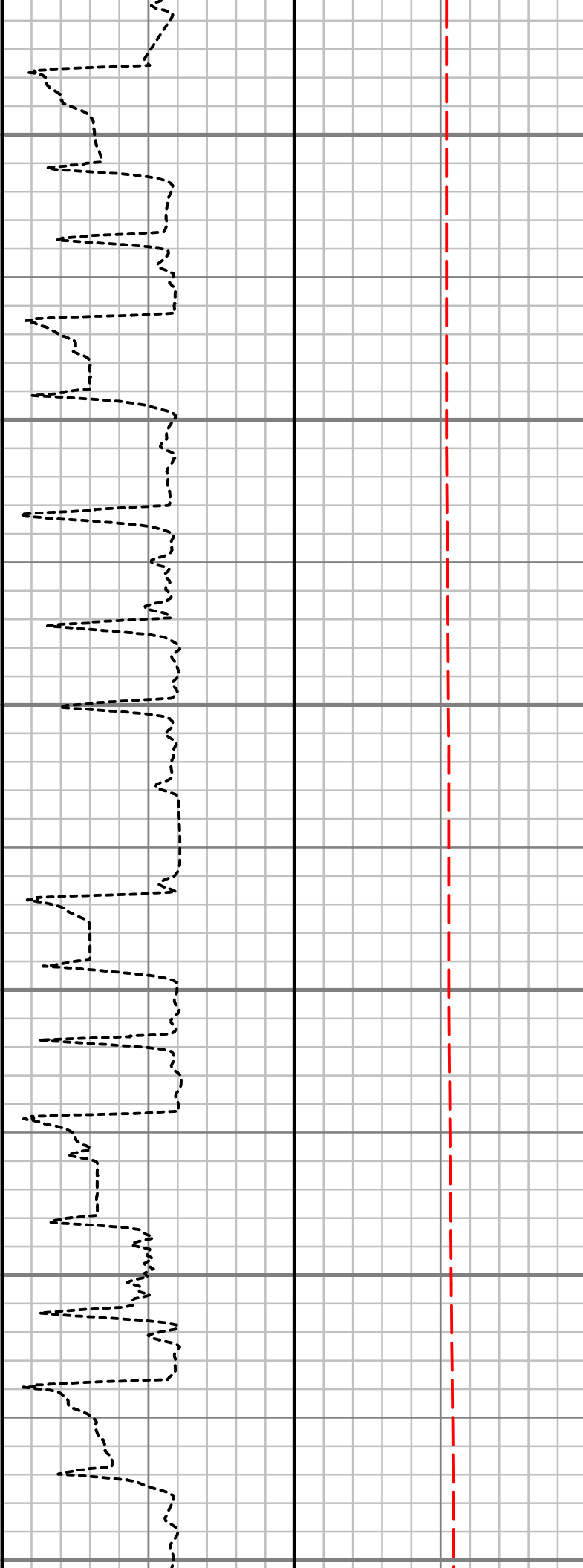
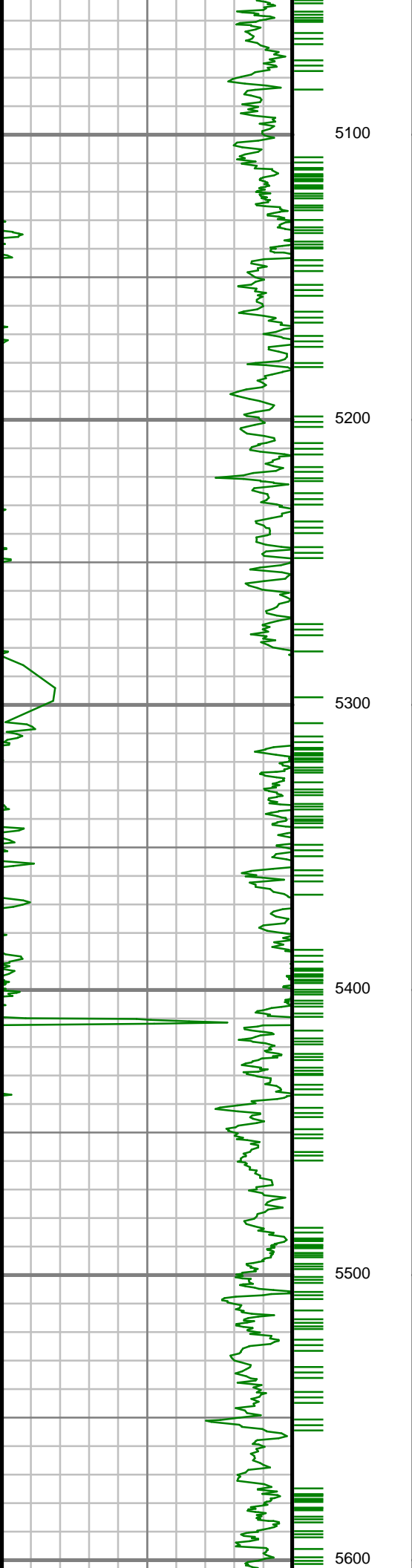
S: 45 MD: 4316.00 ft  
Inc: 18.23 deg Az:  
54.75 deg TVD:  
4216.74 ft

S: 46 MD: 4411.00 ft  
Inc: 16.18 deg Az:  
57.85 deg TVD:  
4307.48 ft

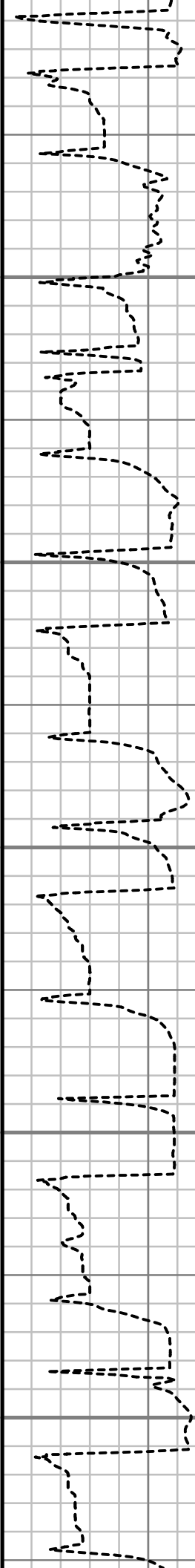
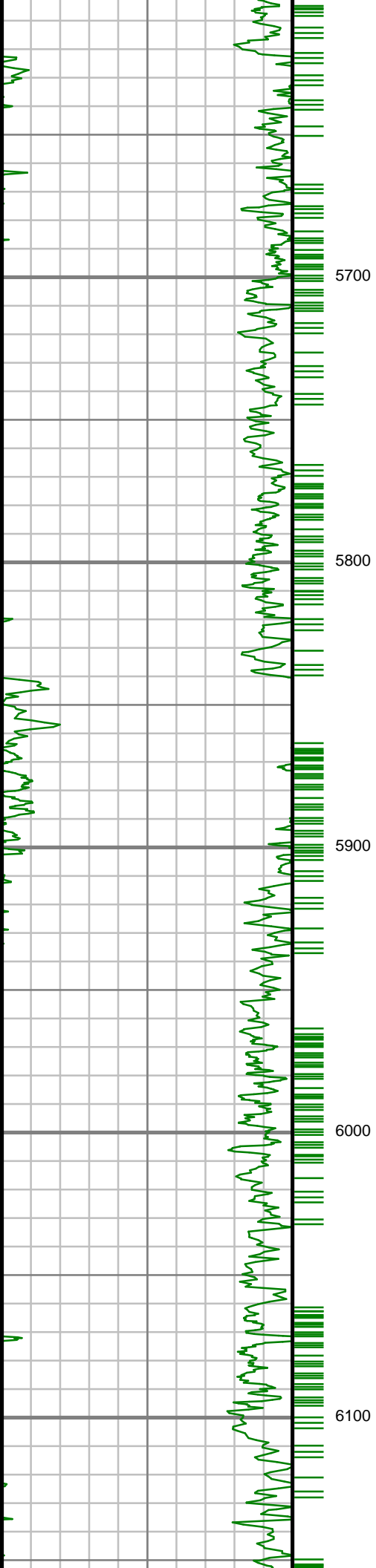


S: 47 MD: 4506.00 ft Inc: 16.48 deg Az: 71.22 deg TVD: 4398.68 ft
S: 48 MD: 4601.00 ft Inc: 18.05 deg Az: 64.55 deg TVD: 4489.41 ft
S: 49 MD: 4696.00 ft Inc: 20.00 deg Az: 62.24 deg TVD: 4579.21 ft
S: 50 MD: 4790.00 ft Inc: 18.50 deg Az: 60.92 deg TVD: 4667.96 ft
S: 51 MD: 4885.00 ft Inc: 17.15 deg Az: 58.96 deg TVD: 4758.40 ft
S: 52 MD: 4979.00 ft Inc: 15.87 deg Az: 54.88 deg TVD: 4848.52 ft





S: 53 MD: 5073.00 ft Inc: 16.59 deg Az: 50.59 deg TVD: 4938.78 ft
S: 54 MD: 5168.00 ft Inc: 18.82 deg Az: 58.77 deg TVD: 5029.28 ft
S: 55 MD: 5263.00 ft Inc: 15.42 deg Az: 62.05 deg TVD: 5120.07 ft
S: 56 MD: 5357.00 ft Inc: 12.91 deg Az: 64.19 deg TVD: 5211.20 ft
S: 57 MD: 5452.00 ft Inc: 15.01 deg Az: 65.31 deg TVD: 5303.39 ft
S: 58 MD: 5546.00 ft Inc: 17.07 deg Az: 56.71 deg TVD: 5393.74 ft



S: 59 MD: 5641.00 ft  
Inc: 16.05 deg Az:  
53.08 deg TVD:  
5484.80 ft

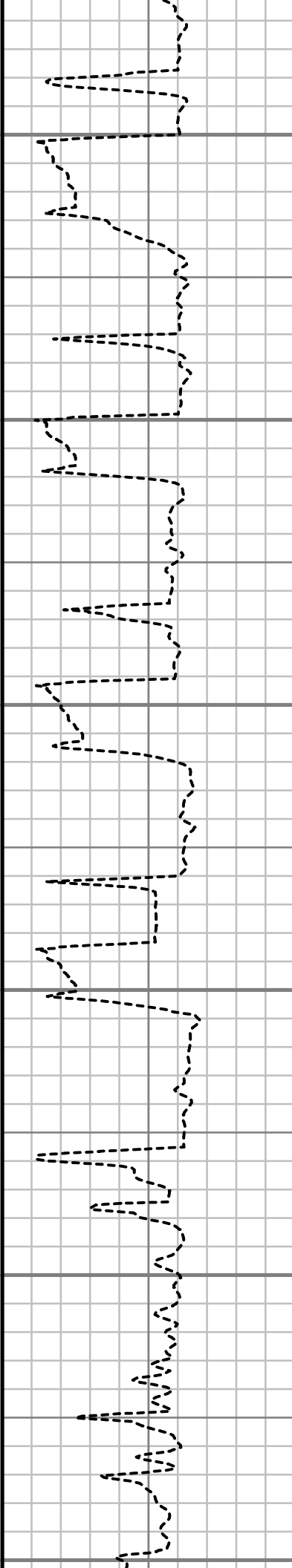
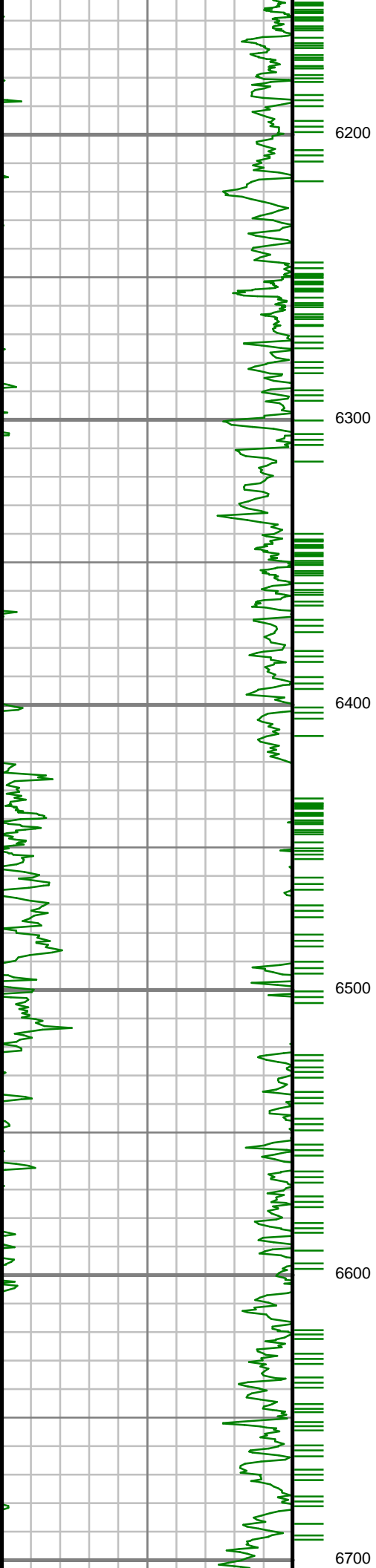
S: 60 MD: 5736.00 ft  
Inc: 14.04 deg Az:  
44.83 deg TVD:  
5576.55 ft

S: 61 MD: 5831.00 ft  
Inc: 13.30 deg Az:  
42.88 deg TVD:  
5668.86 ft

S: 62 MD: 5926.00 ft  
Inc: 13.88 deg Az:  
43.74 deg TVD:  
5761.20 ft

S: 63 MD: 6020.00 ft  
Inc: 12.49 deg Az:  
49.09 deg TVD:  
5852.72 ft

S: 64 MD: 6115.00 ft  
Inc: 14.23 deg Az:  
52.64 deg TVD:  
5945.15 ft



S: 65 MD: 6210.00 ft  
Inc: 14.66 deg Az:  
64.09 deg TVD:  
6037.17 ft

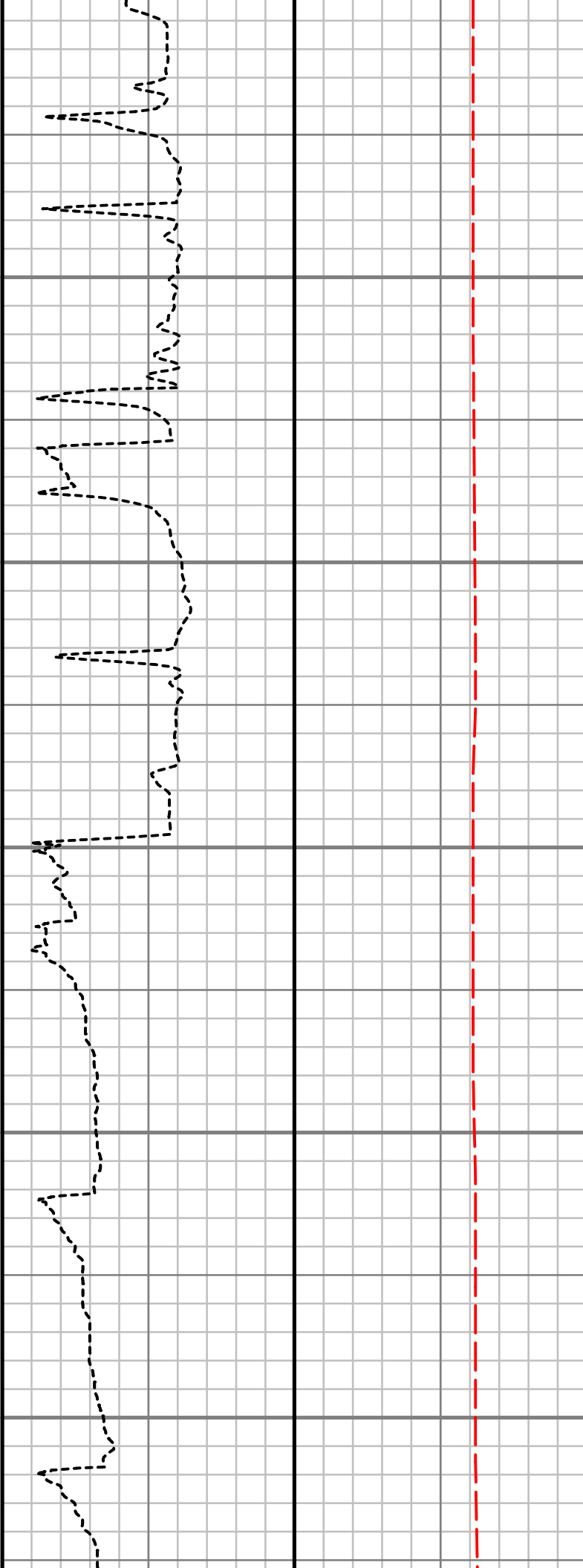
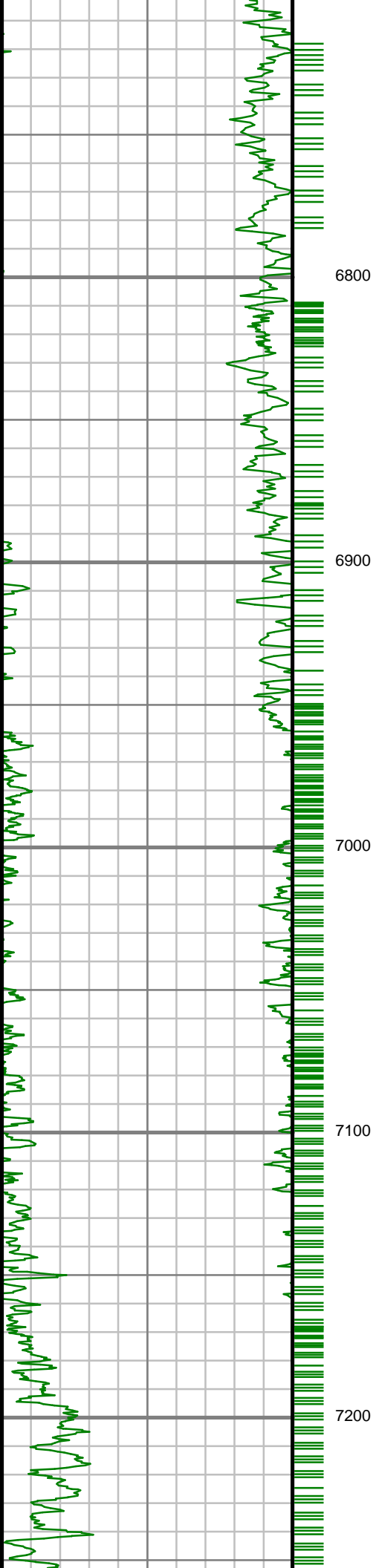
S: 66 MD: 6305.00 ft  
Inc: 12.81 deg Az:  
65.92 deg TVD:  
6129.45 ft

S: 67 MD: 6400.00 ft  
Inc: 10.97 deg Az:  
71.83 deg TVD:  
6222.41 ft

S: 68 MD: 6494.00 ft  
Inc: 10.70 deg Az:  
81.97 deg TVD:  
6314.74 ft

S: 69 MD: 6588.00 ft  
Inc: 8.15 deg Az: 78.78  
deg TVD: 6407.47 ft

S: 70 MD: 6683.00 ft  
Inc: 6.21 deg Az: 72.08  
deg TVD: 6501.72 ft



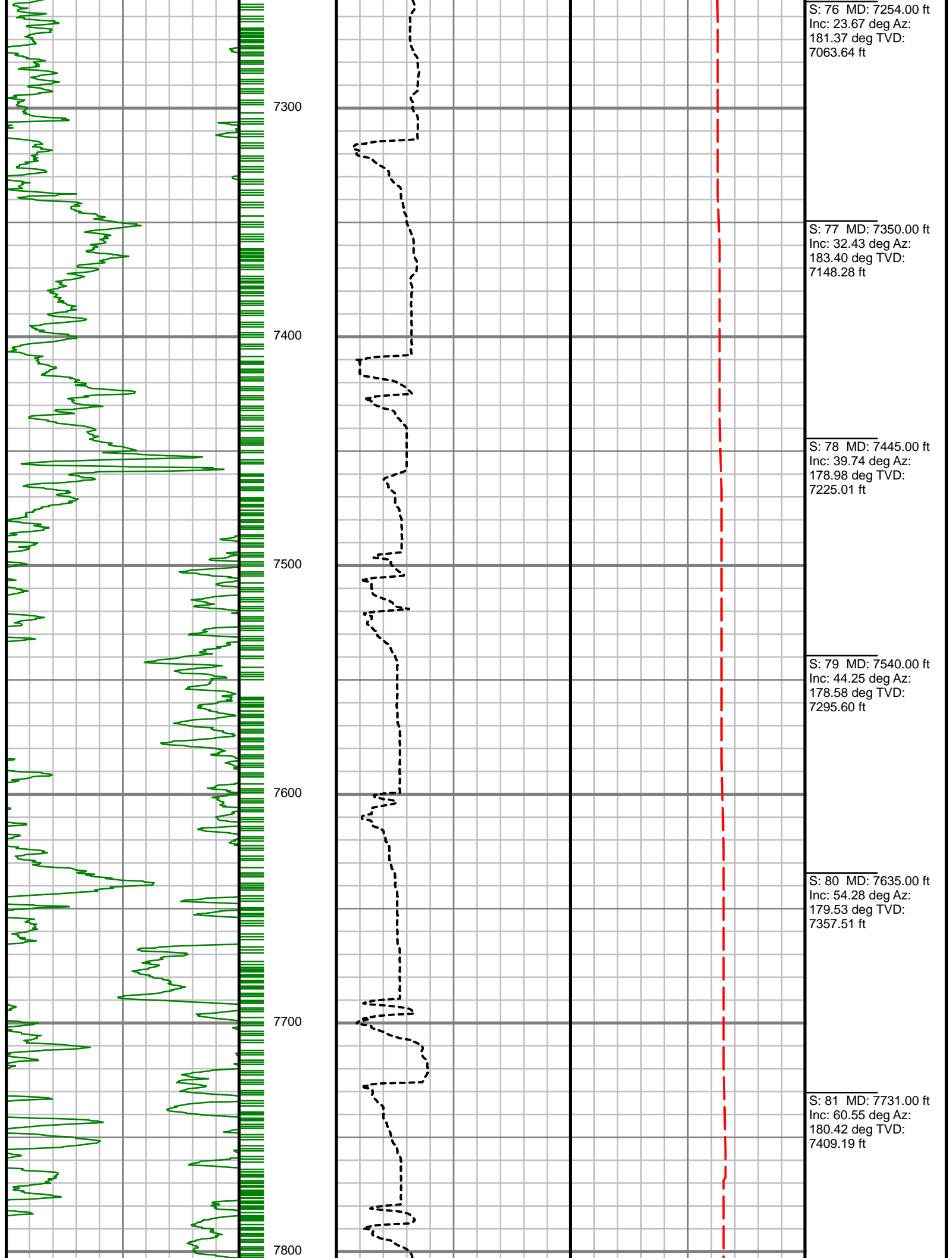
S: 71 MD: 6778.00 ft  
Inc: 4.57 deg Az: 66.44  
deg TVD: 6596.30 ft

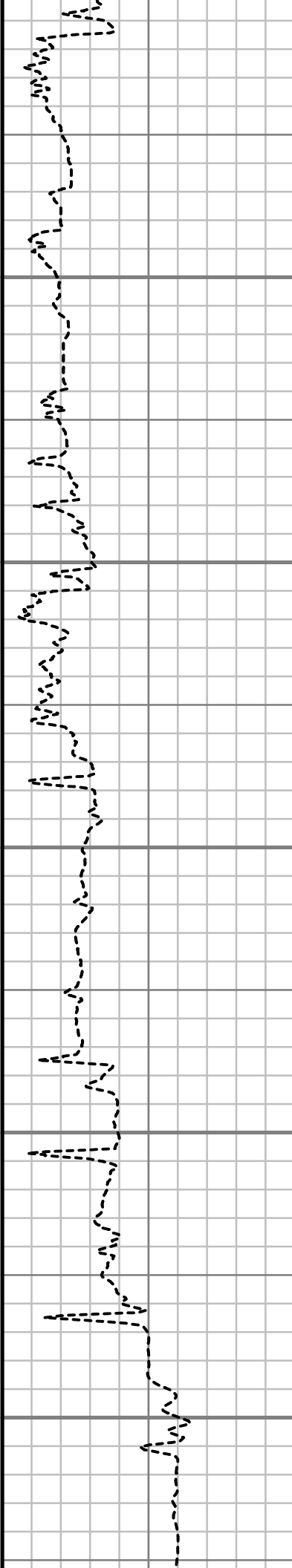
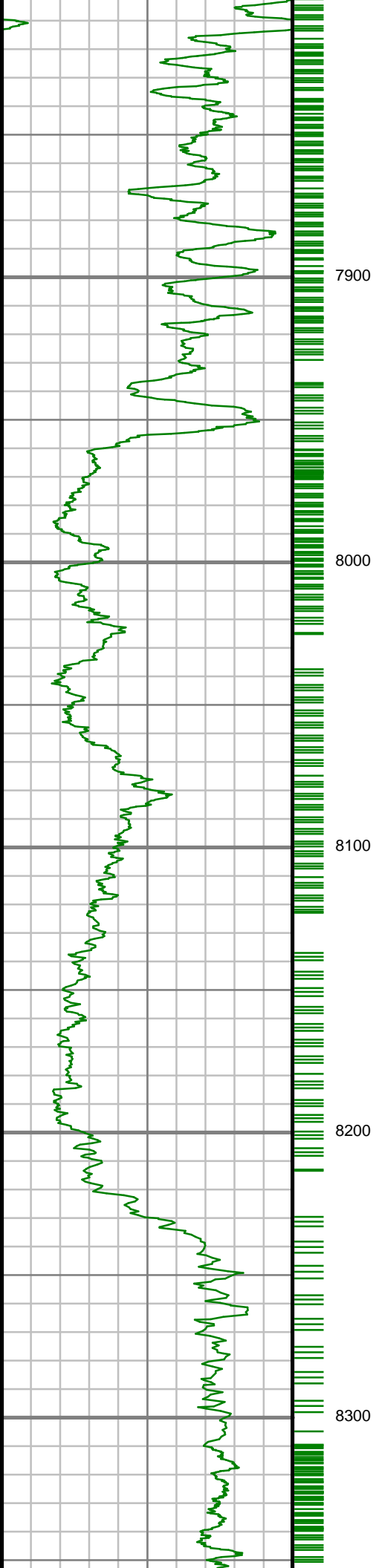
S: 72 MD: 6873.00 ft  
Inc: 1.57 deg Az: 60.99  
deg TVD: 6691.15 ft

S: 73 MD: 6968.00 ft  
Inc: 1.23 deg Az: 5.18  
deg TVD: 6786.13 ft

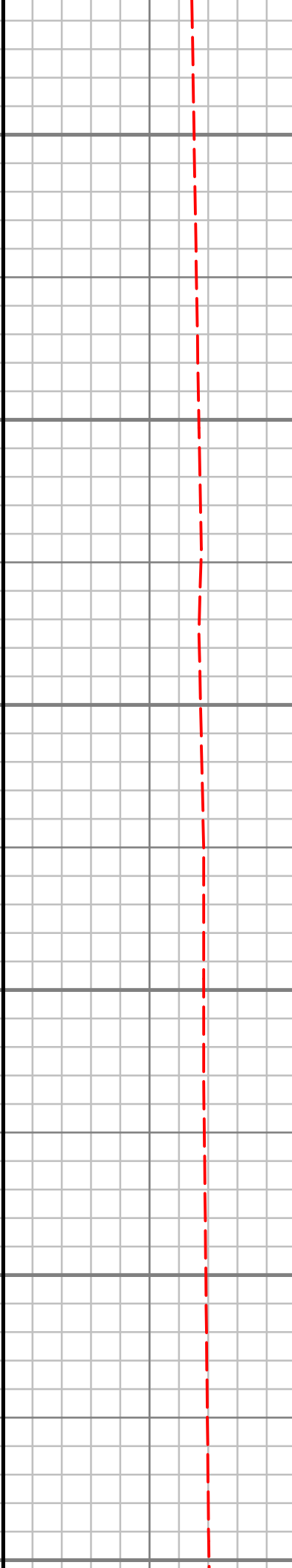
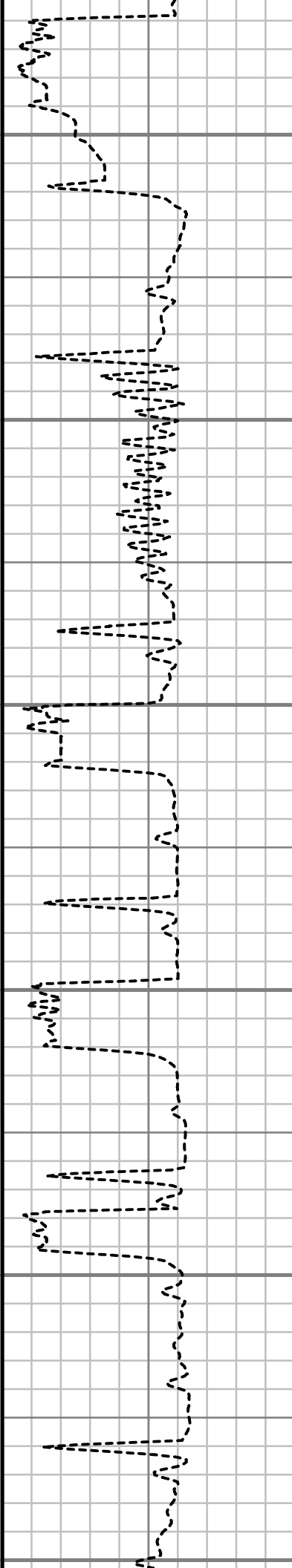
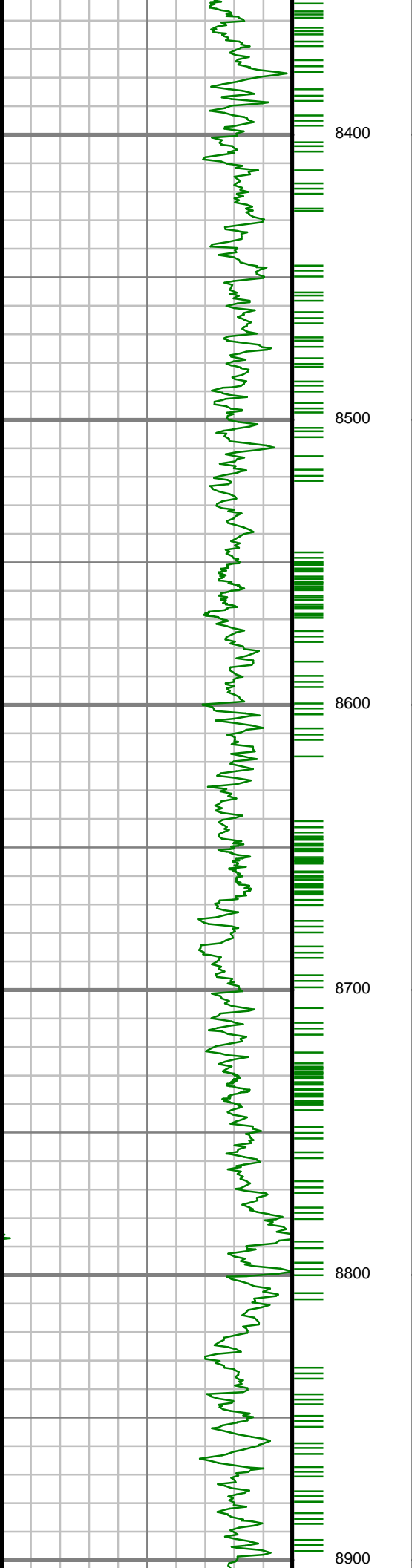
S: 74 MD: 7063.00 ft  
Inc: 6.05 deg Az:  
176.94 deg TVD:  
6880.98 ft

S: 75 MD: 7159.00 ft  
Inc: 17.68 deg Az:  
171.59 deg TVD:  
6974.77 ft





S: 82 MD: 7825.00 ft Inc: 65.70 deg Az: 181.48 deg TVD: 7451.66 ft
S: 83 MD: 7920.00 ft Inc: 76.35 deg Az: 178.04 deg TVD: 7482.52 ft
S: 84 MD: 8015.00 ft Inc: 81.72 deg Az: 178.16 deg TVD: 7500.58 ft
S: 85 MD: 8109.00 ft Inc: 86.65 deg Az: 179.05 deg TVD: 7510.11 ft
S: 86 MD: 8204.00 ft Inc: 86.54 deg Az: 179.00 deg TVD: 7515.75 ft
S: 87 MD: 8297.00 ft Inc: 85.60 deg Az: 178.15 deg TVD: 7522.12 ft



S: 88 MD: 8417.00 ft  
Inc: 90.10 deg Az:  
177.04 deg TVD:  
7526.62 ft

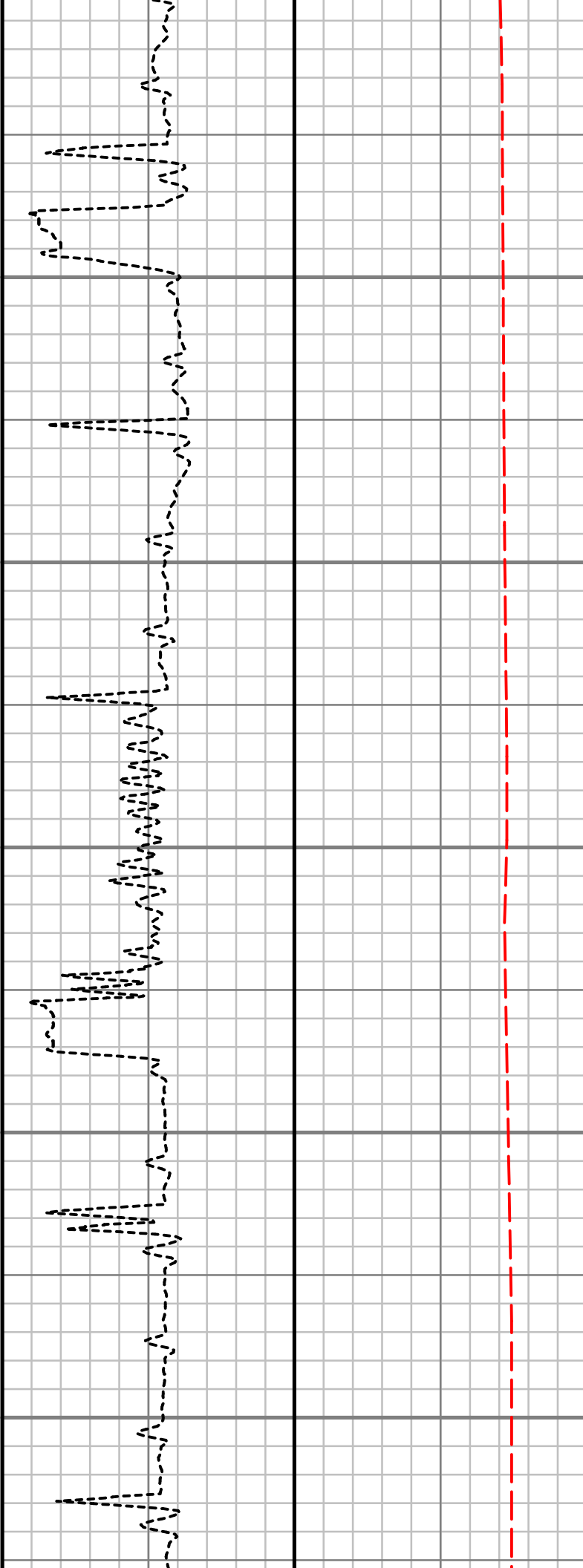
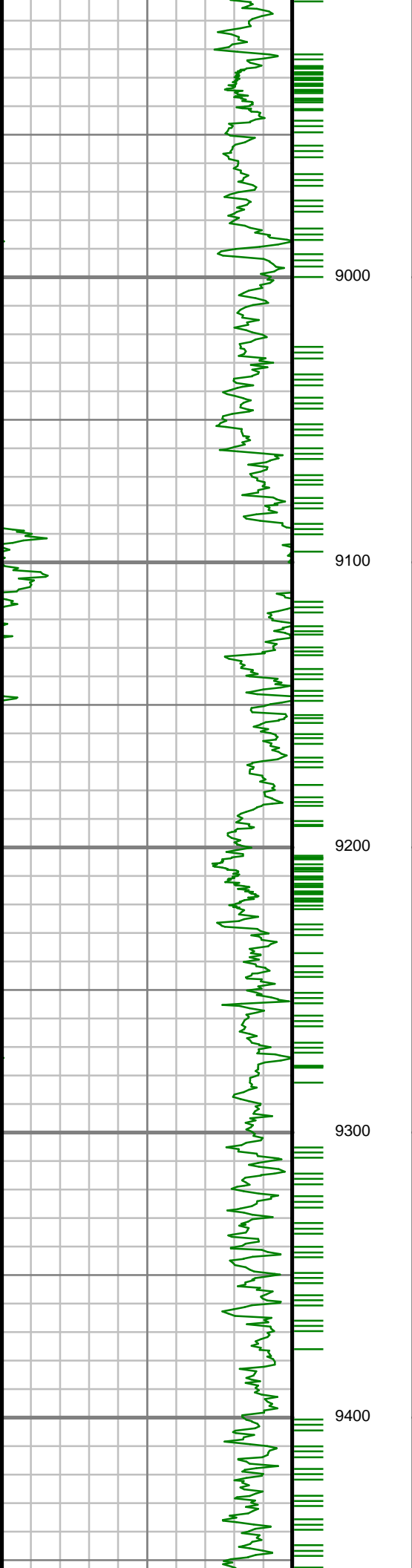
S: 89 MD: 8512.00 ft  
Inc: 90.10 deg Az:  
175.35 deg TVD:  
7526.45 ft

S: 90 MD: 8607.00 ft  
Inc: 89.90 deg Az:  
175.90 deg TVD:  
7526.45 ft

S: 91 MD: 8702.00 ft  
Inc: 90.07 deg Az:  
178.46 deg TVD:  
7526.48 ft

S: 92 MD: 8797.00 ft  
Inc: 89.26 deg Az:  
182.14 deg TVD:  
7527.03 ft

S: 93 MD: 8891.00 ft  
Inc: 89.97 deg Az:



183.00 deg TVD:  
7527.66 ft

S: 94 MD: 8986.00 ft  
Inc: 88.19 deg Az:  
181.24 deg TVD:  
7529.19 ft

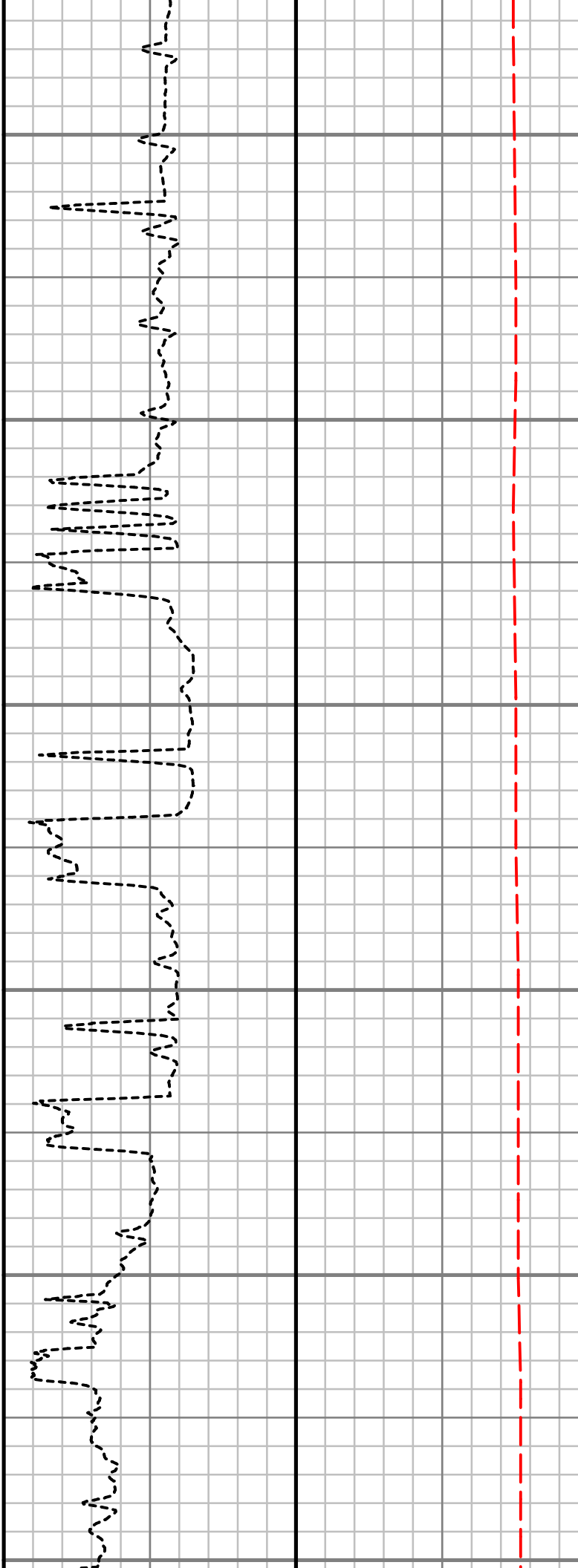
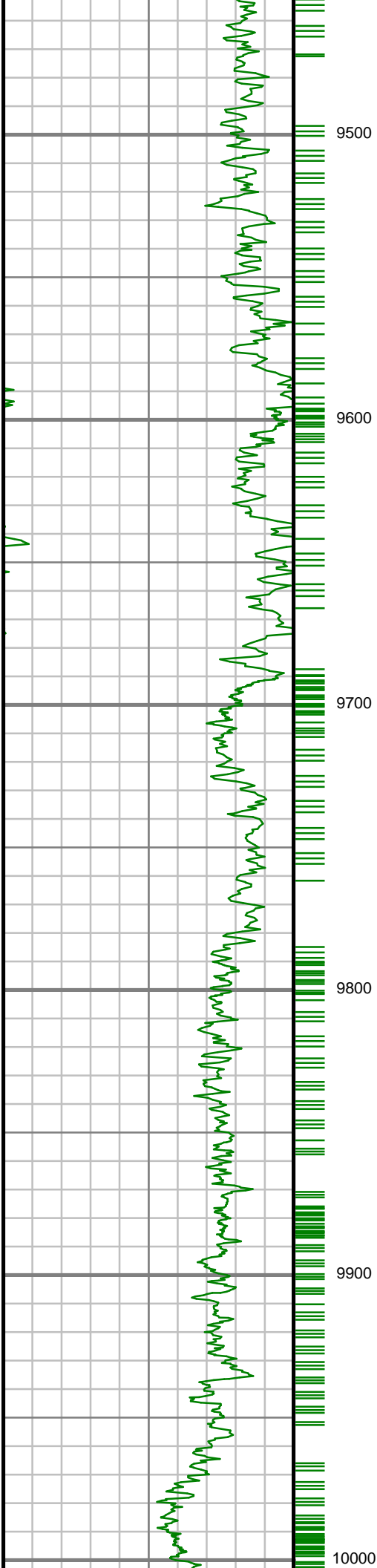
S: 95 MD: 9082.00 ft  
Inc: 88.22 deg Az:  
181.25 deg TVD:  
7532.20 ft

S: 96 MD: 9176.00 ft  
Inc: 87.89 deg Az:  
181.33 deg TVD:  
7535.39 ft

S: 97 MD: 9272.00 ft  
Inc: 89.23 deg Az:  
179.91 deg TVD:  
7537.80 ft

S: 98 MD: 9368.00 ft  
Inc: 89.66 deg Az:  
180.88 deg TVD:  
7538.73 ft





S: 99 MD: 9463.00 ft  
Inc: 89.90 deg Az:  
181.47 deg TVD:  
7539.09 ft

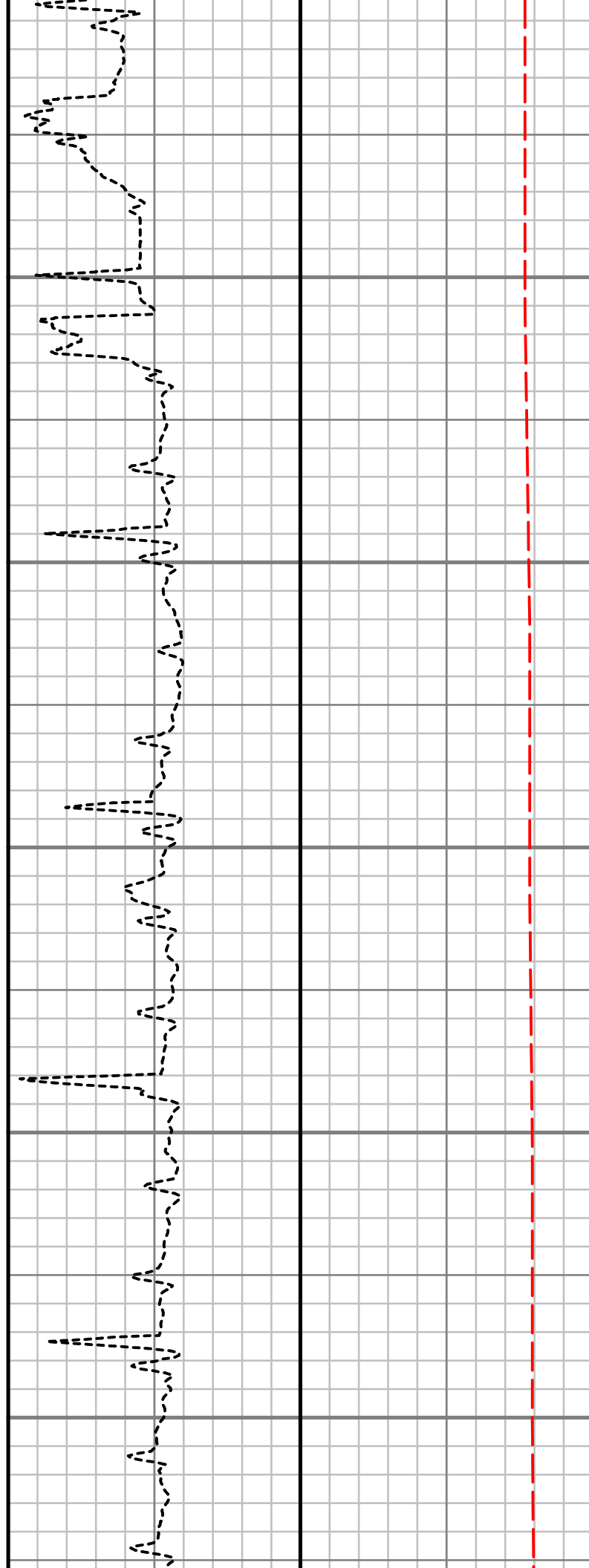
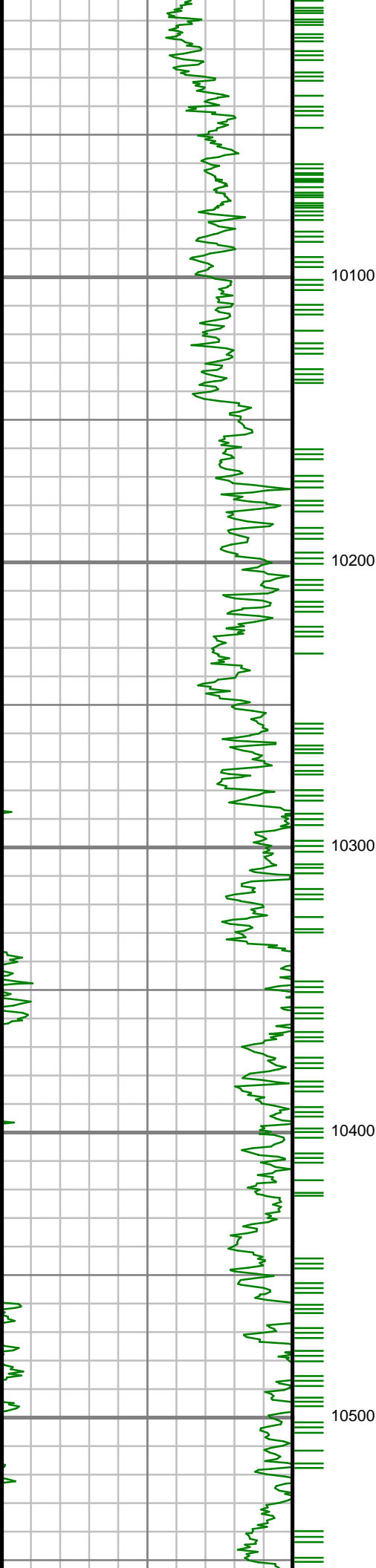
S: 100 MD: 9559.00 ft  
Inc: 89.97 deg Az:  
181.26 deg TVD:  
7539.20 ft

S: 101 MD: 9654.00 ft  
Inc: 92.48 deg Az:  
181.85 deg TVD:  
7537.18 ft

S: 102 MD: 9749.00 ft  
Inc: 91.61 deg Az:  
181.18 deg TVD:  
7533.78 ft

S: 103 MD: 9844.00 ft  
Inc: 90.44 deg Az:  
179.16 deg TVD:  
7532.09 ft

S: 104 MD: 9939.00 ft  
Inc: 88.79 deg Az:  
177.77 deg TVD:  
7532.73 ft



S: 105 MD: 10033.00 ft  
Inc: 87.42 deg Az:  
178.13 deg TVD:  
7535.83 ft

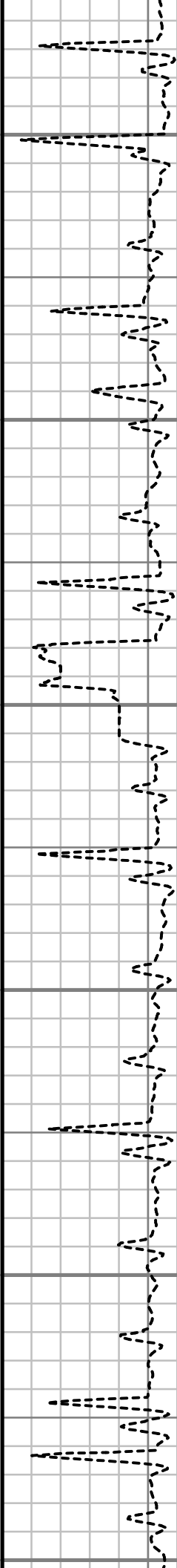
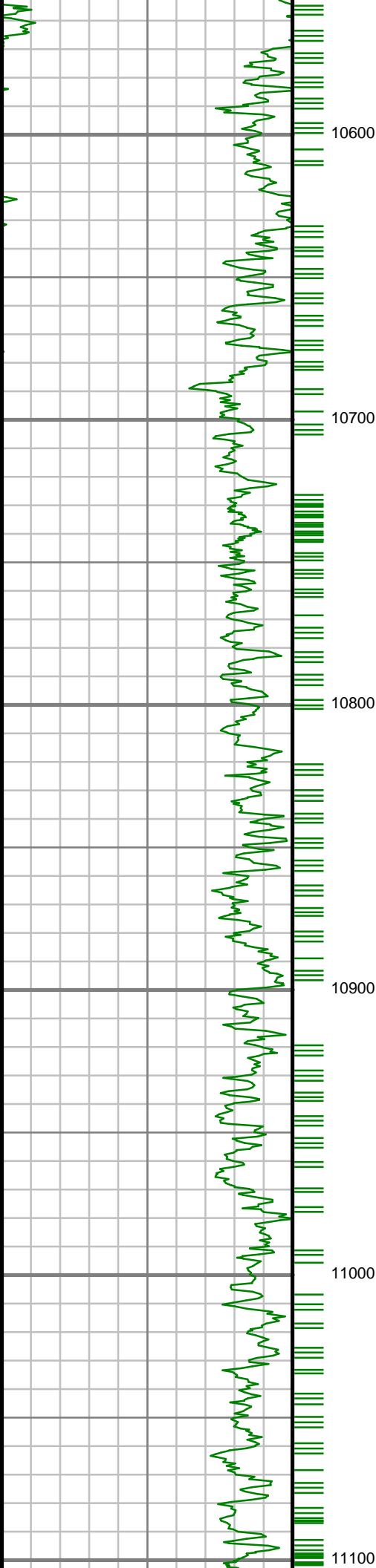
S: 106 MD: 10128.00 ft  
Inc: 88.12 deg Az:  
178.51 deg TVD:  
7539.53 ft

S: 107 MD: 10223.00 ft  
Inc: 88.66 deg Az:  
178.24 deg TVD:  
7542.20 ft

S: 108 MD: 10317.00 ft  
Inc: 89.73 deg Az:  
179.19 deg TVD:  
7543.52 ft

S: 109 MD: 10412.00 ft  
Inc: 89.70 deg Az:  
179.06 deg TVD:  
7544.00 ft

S: 110 MD: 10507.00 ft  
Inc: 89.93 deg Az:  
179.30 deg TVD:  
7544.30 ft



S: 111 MD: 10602.00 ft  
Inc: 90.44 deg Az:  
179.79 deg TVD:  
7544.00 ft

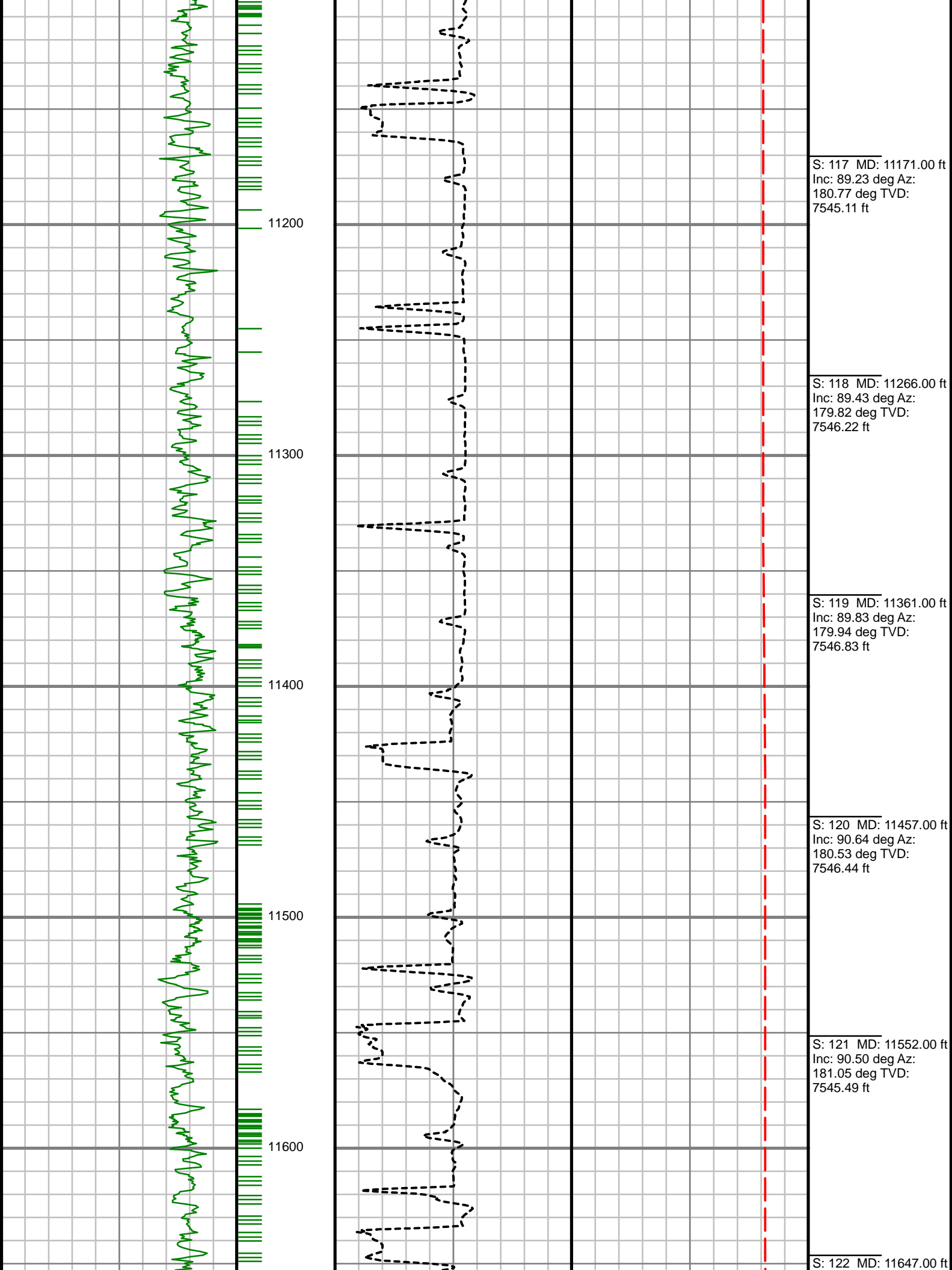
S: 112 MD: 10696.00 ft  
Inc: 90.97 deg Az:  
179.16 deg TVD:  
7542.84 ft

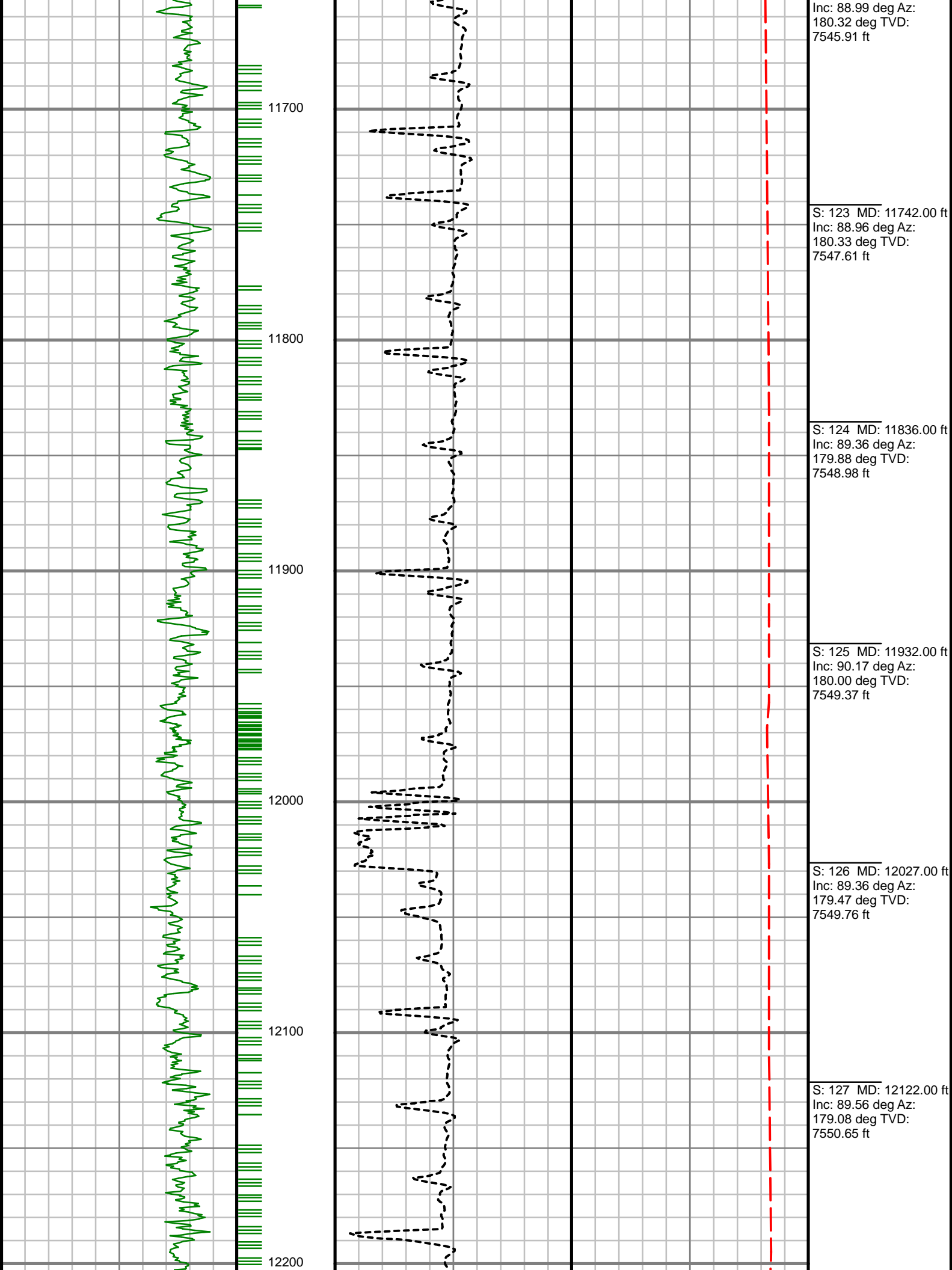
S: 113 MD: 10792.00 ft  
Inc: 89.30 deg Az:  
180.05 deg TVD:  
7542.62 ft

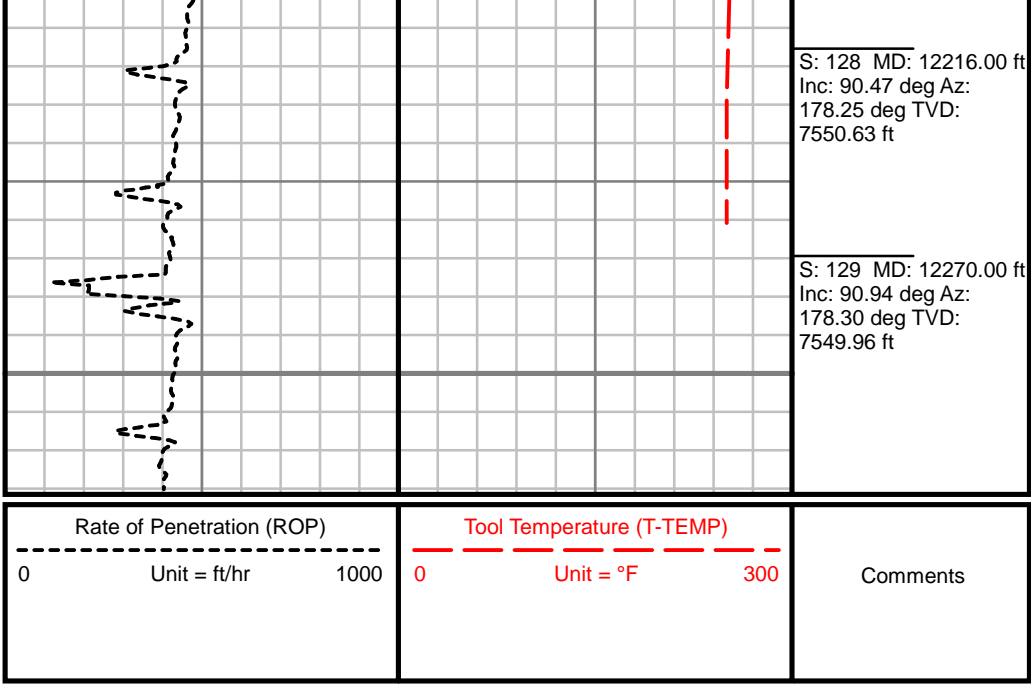
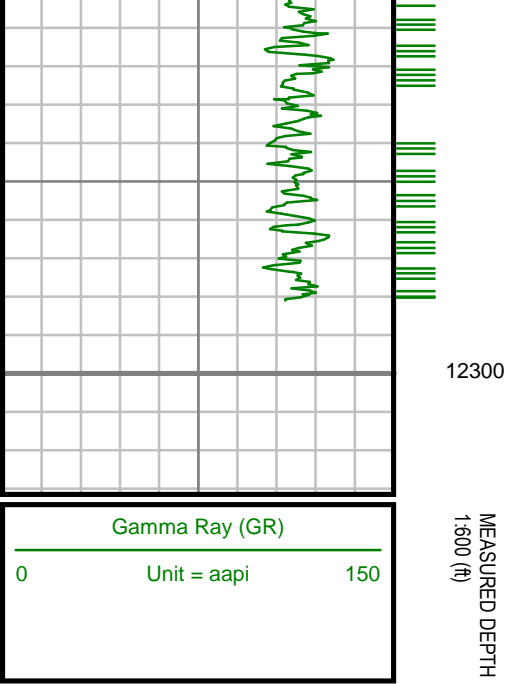
S: 114 MD: 10887.00 ft  
Inc: 89.23 deg Az:  
179.90 deg TVD:  
7543.84 ft

S: 115 MD: 10981.00 ft  
Inc: 89.70 deg Az:  
180.06 deg TVD:  
7544.72 ft

S: 116 MD: 11076.00 ft  
Inc: 90.30 deg Az:  
179.90 deg TVD:  
7544.72 ft







CUSTOMER  
PROJECT  
FIELD

EXTRACTION OIL AND GAS  
JOHNSON TRUST PAD  
WATTENBERG

WELL INFORMATION  
Lat/Long  
Northing  
Easting  
UWI

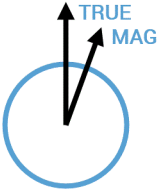
40° 8' 14.42" N, 104° 57' 34.632" W  
1,293,336.56 ft  
3,151,083.59 ft  
05-123-42321-00

MAP INFORMATION  
North Reference  
Grid Correction  
System  
Datum  
Map Zone

True North  
US State Plane 1983  
North American Datum 1983 (GRS 1980)  
Colorado North: 0501

VERTICAL SECTION REFERENCE  
+N/-S  
+E/-W  
Proposal Direction  
Calculation Method

0 ft  
0 ft  
179.84°  
Minimum Curvature



GEOMAGNETIC REFERENCE INFORMATION

Local Gravity: 999.047 mG [computed]

MD	MODEL	DATE	DECLINATION	MAG TO TRUE
0-12270 ft	BGGM2015	04 Jan 2016	8.60°	add 8.6°

WELL NOTES

OPERATORS  
J. GREGORY, M. SMITH

MD	Inc	Azim	TVD	VS	+N/-S	+E/-W	DLS
ft	deg	deg	ft	ft	ft	ft	°/100ft
0.00	0.00	0.00	0.00	0.00	0.00	0.00	Invalid
228.00	1.35	289.54	227.98	-0.91	0.90	-2.53	0.59
320.00	0.79	272.51	319.96	-1.30	1.29	-4.19	0.69
412.00	0.82	242.98	411.95	-1.03	1.02	-5.41	0.45
508.00	0.78	202.81	507.95	-0.12	0.10	-6.27	0.57
603.00	0.98	194.88	602.93	1.26	-1.28	-6.73	0.25
698.00	1.38	204.72	697.91	3.08	-3.10	-7.42	0.47
793.00	1.51	219.75	792.88	5.08	-5.10	-8.70	0.42
887.00	1.08	271.49	886.86	6.00	-6.03	-10.37	1.27
982.00	0.94	304.57	981.85	5.53	-5.57	-11.91	0.62
1077.00	1.09	5.59	1076.84	4.19	-4.23	-12.46	1.09
1171.00	1.91	2.83	1170.80	1.74	-1.77	-12.30	0.88
1266.00	1.41	20.13	1265.76	-0.94	0.91	-11.82	0.74
1360.00	0.76	46.88	1359.75	-2.45	2.42	-10.97	0.86
1456.00	0.56	65.47	1455.74	-3.08	3.05	-10.08	0.30
1534.00	0.50	193.31	1533.74	-2.90	2.88	-9.81	1.22
1600.00	1.09	201.31	1599.73	-2.04	2.01	-10.10	0.91
1663.00	1.11	78.96	1662.73	-1.59	1.57	-9.72	3.06
1757.00	3.79	64.24	1756.63	-3.11	3.09	-6.03	2.91
1852.00	5.95	62.44	1851.28	-6.73	6.74	1.16	2.28

MD ft	Inc deg	Azim deg	TVD ft	VS ft	+N/-S ft	+E/-W ft	DLS °/100ft
1947.00	7.99	62.77	1945.58	-12.01	12.04	11.41	2.15
2041.00	9.61	65.45	2038.47	-18.22	18.29	24.35	1.77
2136.00	10.60	64.62	2131.99	-25.21	25.32	39.45	1.06
2230.00	10.79	65.56	2224.36	-32.52	32.67	55.28	0.28
2325.00	10.94	67.68	2317.66	-39.58	39.78	71.72	0.45
2420.00	14.01	67.37	2410.40	-47.37	47.63	90.67	3.23
2516.00	15.12	62.57	2503.32	-57.55	57.86	112.51	1.71
2611.00	18.15	54.56	2594.35	-71.77	72.15	135.57	3.99
2705.00	19.97	57.80	2683.19	-88.75	89.20	161.08	2.24
2800.00	19.26	58.04	2772.68	-105.61	106.13	188.10	0.75
2894.00	19.06	59.77	2861.48	-121.47	122.07	214.51	0.64
2989.00	18.91	57.52	2951.31	-137.47	138.15	240.90	0.79
3084.00	19.75	60.06	3040.95	-153.68	154.43	267.80	1.25
3179.00	17.18	70.76	3131.08	-166.24	167.07	294.97	4.47
3274.00	14.11	67.92	3222.55	-175.15	176.05	318.96	3.33
3369.00	15.47	64.29	3314.40	-184.94	185.90	341.11	1.73
3464.00	15.27	62.79	3406.00	-196.10	197.11	363.66	0.47
3558.00	17.84	66.98	3496.10	-207.32	208.41	387.92	3.01
3653.00	16.55	63.42	3586.85	-219.00	220.15	413.42	1.75
3747.00	15.24	63.52	3677.26	-230.44	231.66	436.46	1.40

MD ft	Inc deg	Azim deg	TVD ft	VS ft	+N/-S ft	+E/-W ft	DLS °/100ft
3843.00	18.22	68.44	3769.19	-241.51	242.80	461.72	3.43
3937.00	19.95	65.54	3858.02	-253.47	254.84	489.99	2.10
4032.00	20.06	61.21	3947.29	-267.95	269.40	519.02	1.56
4126.00	18.27	58.69	4036.08	-283.30	284.83	545.74	2.09
4221.00	17.83	58.28	4126.40	-298.62	300.22	570.84	0.48
4316.00	18.23	54.75	4216.74	-314.78	316.44	595.35	1.22
4411.00	16.18	57.85	4307.48	-330.34	332.06	618.70	2.36
4506.00	16.48	71.22	4398.68	-341.66	343.45	642.67	3.96
4601.00	18.05	64.55	4489.41	-352.25	354.12	668.73	2.66
4696.00	20.00	62.24	4579.21	-366.06	368.01	696.40	2.20
4790.00	18.50	60.92	4667.96	-380.72	382.74	723.65	1.66
4885.00	17.15	58.96	4758.40	-395.20	397.29	748.83	1.55
4979.00	15.87	54.88	4848.52	-409.68	411.83	771.22	1.84
5073.00	16.59	50.59	4938.78	-425.54	427.75	792.10	1.49
5168.00	18.82	58.77	5029.28	-442.03	444.31	815.69	3.51
5263.00	15.42	62.05	5120.07	-455.83	458.18	839.95	3.72
5357.00	12.91	64.19	5211.20	-466.20	468.60	860.44	2.73
5452.00	15.01	65.31	5303.39	-475.90	478.36	881.17	2.24
5546.00	17.07	56.71	5393.74	-488.50	491.03	903.77	3.34
5641.00	16.05	53.08	5484.80	-503.98	506.57	925.93	1.53



MD ft	Inc deg	Azim deg	TVD ft	VS ft	+N/-S ft	+E/-W ft	DLS °/100ft
5736.00	14.04	44.83	5576.55	-519.99	522.63	944.56	3.09
5831.00	13.30	42.88	5668.86	-536.13	538.81	960.11	0.92
5926.00	13.88	43.74	5761.20	-552.33	555.05	975.43	0.65
6020.00	12.49	49.09	5852.72	-567.09	569.86	990.90	1.97
6115.00	14.23	52.64	5945.15	-580.85	583.67	1007.95	2.03
6210.00	14.66	64.09	6037.17	-593.13	596.00	1028.04	3.03
6305.00	12.81	65.92	6129.45	-602.62	605.55	1048.47	2.00
6400.00	10.97	71.83	6222.41	-609.69	612.67	1066.67	2.32
6494.00	10.70	81.97	6314.74	-613.64	616.67	1083.81	2.04
6588.00	8.15	78.78	6407.47	-616.12	619.19	1098.99	2.77
6683.00	6.21	72.08	6501.72	-618.98	622.08	1110.48	2.22
6778.00	4.57	66.44	6596.30	-622.05	625.18	1118.85	1.81
6873.00	1.57	60.99	6691.15	-624.18	627.32	1123.46	3.17
6968.00	1.23	5.18	6786.13	-625.83	628.97	1124.69	1.42
7063.00	6.05	176.94	6880.98	-621.84	624.99	1125.05	7.65
7159.00	17.68	171.59	6974.77	-602.30	605.45	1127.46	12.16
7254.00	23.67	181.37	7063.64	-568.92	572.08	1129.12	7.26
7350.00	32.43	183.40	7148.28	-523.88	527.03	1127.13	9.18
7445.00	39.74	178.98	7225.01	-468.00	471.15	1126.15	8.17
7540.00	44.25	178.58	7295.60	-404.47	407.62	1127.51	4.76

MD ft	Inc deg	Azim deg	TVD ft	VS ft	+N/-S ft	+E/-W ft	DLS °/100ft
7635.00	54.28	179.53	7357.51	-332.58	335.73	1128.65	10.58
7731.00	60.55	180.42	7409.19	-251.73	254.89	1128.67	6.58
7825.00	65.70	181.48	7451.66	-167.93	171.08	1127.26	5.58
7920.00	76.35	178.04	7482.52	-78.24	81.39	1127.72	11.71
8015.00	81.72	178.16	7500.58	14.95	-11.79	1130.82	5.66
8109.00	86.65	179.05	7510.11	108.41	-105.25	1133.09	5.33
8204.00	86.54	179.00	7515.75	203.24	-200.07	1134.71	0.12
8297.00	85.60	178.15	7522.12	295.99	-292.82	1137.02	1.37
8417.00	90.10	177.04	7526.62	415.78	-412.60	1142.05	3.86
8512.00	90.10	175.35	7526.45	510.59	-507.38	1148.36	1.78
8607.00	89.90	175.90	7526.45	605.33	-602.11	1155.61	0.62
8702.00	90.07	178.46	7526.48	700.22	-696.98	1160.29	2.70
8797.00	89.26	182.14	7527.03	795.20	-791.96	1159.80	3.96
8891.00	89.97	183.00	7527.66	889.09	-885.87	1155.59	1.19
8986.00	88.19	181.24	7529.19	983.99	-980.78	1152.07	2.63
9082.00	88.22	181.25	7532.20	1079.92	-1076.71	1149.99	0.04
9176.00	87.89	181.33	7535.39	1173.83	-1170.63	1147.87	0.37
9272.00	89.23	179.91	7537.80	1269.79	-1266.59	1146.83	2.04
9368.00	89.66	180.88	7538.73	1365.78	-1362.58	1146.18	1.11
9463.00	89.90	181.47	7539.09	1460.75	-1457.56	1144.23	0.67

MD ft	Inc deg	Azim deg	TVD ft	VS ft	+N/-S ft	+E/-W ft	DLS °/100ft
9559.00	89.97	181.26	7539.20	1556.72	-1553.54	1141.95	0.23
9654.00	92.48	181.85	7537.18	1651.65	-1648.47	1139.37	2.72
9749.00	91.61	181.18	7533.78	1746.54	-1743.38	1136.87	1.16
9844.00	90.44	179.16	7532.09	1841.52	-1838.35	1136.58	2.46
9939.00	88.79	177.77	7532.73	1936.48	-1933.31	1139.13	2.27
10033.00	87.42	178.13	7535.83	2030.38	-2027.20	1142.49	1.51
10128.00	88.12	178.51	7539.53	2125.27	-2122.08	1145.28	0.84
10223.00	88.66	178.24	7542.20	2220.20	-2217.01	1147.96	0.63
10317.00	89.73	179.19	7543.52	2314.17	-2310.97	1150.07	1.52
10412.00	89.70	179.06	7544.00	2409.17	-2405.96	1151.52	0.15
10507.00	89.93	179.30	7544.30	2504.16	-2500.95	1152.89	0.36
10602.00	90.44	179.79	7544.00	2599.16	-2595.95	1153.64	0.74
10696.00	90.97	179.16	7542.84	2693.15	-2689.93	1154.50	0.88
10792.00	89.30	180.05	7542.62	2789.14	-2785.93	1155.16	1.98
10887.00	89.23	179.90	7543.84	2884.13	-2880.92	1155.20	0.18
10981.00	89.70	180.06	7544.72	2978.13	-2974.91	1155.24	0.53
11076.00	90.30	179.90	7544.72	3073.13	-3069.91	1155.27	0.66
11171.00	89.23	180.77	7545.11	3168.12	-3164.91	1154.71	1.46
11266.00	89.43	179.82	7546.22	3263.11	-3259.90	1154.22	1.02
11361.00	89.83	179.94	7546.83	3358.11	-3354.90	1154.41	0.44

MD ft	Inc deg	Azim deg	TVD ft	VS ft	+N/-S ft	+E/-W ft	DLS °/100ft
11457.00	90.64	180.53	7546.44	3454.10	-3450.90	1154.02	1.04
11552.00	90.50	181.05	7545.49	3549.09	-3545.88	1152.72	0.56
11647.00	88.99	180.32	7545.91	3644.07	-3640.87	1151.59	1.76
11742.00	88.96	180.33	7547.61	3739.05	-3735.85	1151.05	0.04
11836.00	89.36	179.88	7548.98	3833.04	-3829.84	1150.88	0.64
11932.00	90.17	180.00	7549.37	3929.04	-3925.84	1150.98	0.85
12027.00	89.36	179.47	7549.76	4024.04	-4020.84	1151.42	1.01
12122.00	89.56	179.08	7550.65	4119.03	-4115.83	1152.63	0.46
12216.00	90.47	178.25	7550.63	4213.01	-4209.80	1154.82	1.31
12270.00	90.94	178.30	7549.96	4266.98	-4263.77	1156.45	0.87



GAMMA RAY

2" = 100' FEET MD