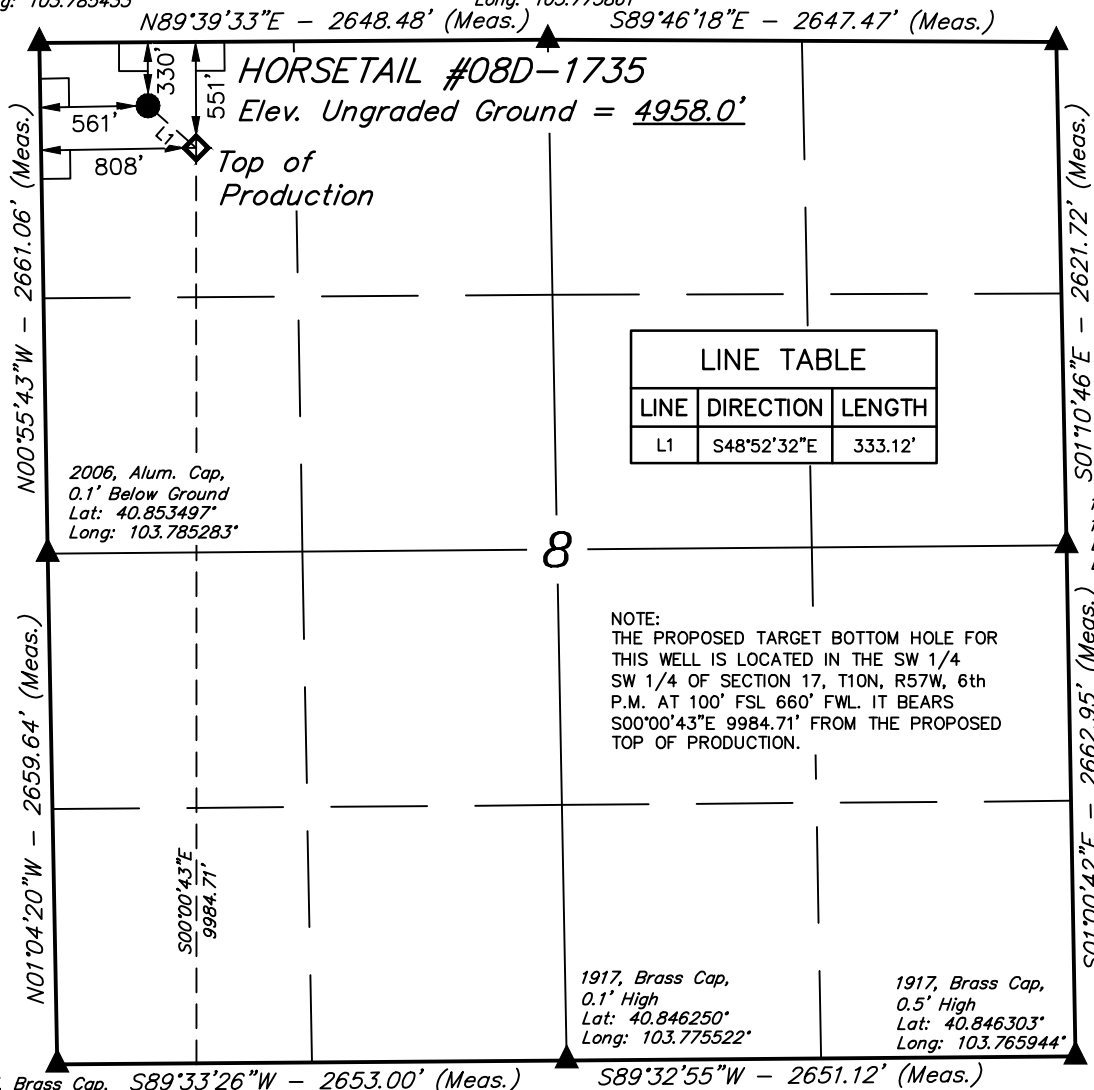


T10N, R57W, 6th P.M.

2006, Alum. Cap,
0.9' Below Ground
Lat: 40.860797°
Long: 103.785433°

2006, Alum. Cap,
0.8' Below Ground
Lat: 40.860836°
Long: 103.775861°

1917, Brass Cap,
1.2' High
Lat: 40.860800°
Long: 103.766292°



1917, Brass Cap, 0.4' High
Lat: 40.846200°
Long: 103.785111°

Target Bottom Hole

PDOP = 1.6

NAD 83 (TOP OF PRODUCTION)	NAD 83 (SURFACE LOCATION)
LATITUDE = 40°51'33.47" (40.859297)	LATITUDE = 40°51'35.64" (40.859900)
LONGITUDE = 103°46'56.94" (103.782483)	LONGITUDE = 103°47'00.20" (103.783389)
NAD 27 (TOP OF PRODUCTION)	NAD 27 (SURFACE LOCATION)
LATITUDE = 40°51'33.52" (40.859311)	LATITUDE = 40°51'35.69" (40.859914)
LONGITUDE = 103°46'55.13" (103.781981)	LONGITUDE = 103°46'58.39" (103.782886)

WHITING OIL & GAS CORP.

Well location, HORSETAIL #08D-1735, (SURFACE LOCATION), located as shown in the NW 1/4 NW 1/4 of Section 8, T10N, R57W, 6th P.M., Weld County, Colorado.

BASIS OF ELEVATION

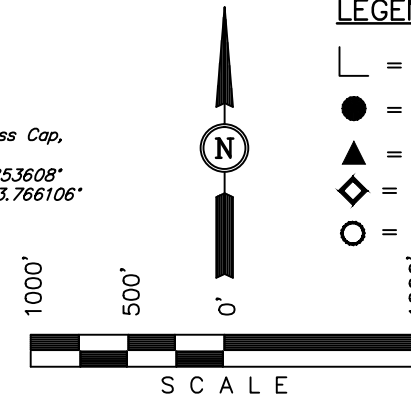
SPOT ELEVATION LOCATED AT THE NORTHEAST CORNER OF SECTION 15, T9N, R58W, 6th P.M. TAKEN FROM THE GATEHOOK SPRING, QUADRANGLE, COLORADO, WELD COUNTY, 7.5 MINUTE QUAD (TOPOGRAPHIC MAP) PUBLISHED BY THE UNITED STATES DEPARTMENT OF THE INTERIOR, GEOLOGICAL SURVEY. SAID ELEVATION IS MARKED AS BEING 4679 FEET.

BASIS OF BEARINGS

BASIS OF BEARINGS IS A G.P.S. OBSERVATION.

LEGEND:

- └─ = 90° SYMBOL
- = PROPOSED WELLHEAD.
- ▲ = SECTION CORNERS LOCATED.
- ◆ = TOP OF PRODUCTION.
- = TARGET BOTTOM HOLE.



CERTIFICATION

THIS IS TO CERTIFY THAT THE ABOVE PLAT WAS PREPARED FROM FIELD NOTES OF ACTUAL SURVEYS MADE BY ME OR UNDER MY SUPERVISION AND THAT THE SAME ARE TRUE AND CORRECT TO THE BEST OF MY KNOWLEDGE AND BELIEF.

REGISTERED LAND SURVEYOR
REGISTRATION NO. 28285
STATE OF COLORADO
03-22-16

REV: 03-22-16 S.S.
REV: 03-02-16 S.S.
REV: 02-13-15 K.B.

UINTAH ENGINEERING & LAND SURVEYING
85 SOUTH 200 EAST - VERNAL, UTAH 84078
(435) 789-1017

SCALE 1" = 1000'	DATE SURVEYED: 12-09-14	DATE DRAWN: 12-29-14
PARTY DALLAS NIELSEN J.S. K.B.	REFERENCES G.L.O. PLAT	
WEATHER COLD	FILE WHITING OIL & GAS CORP.	

T10N, R57W, 6th P.M.

1917, Brass Cap,
0.4' High
Lat: 40.846200°
Long: 103.785111°

Top of
Production

1917, Brass Cap,
0.1' High
Lat: 40.846250°
Long: 103.775522°

1917, Brass Cap,
0.5' High
Lat: 40.846303°
Long: 103.765944°

N89°33'26"E - 2653.00' (Meas.)

N89°32'55"E - 2651.12' (Meas.)

N00°42'39"W - 2657.16' (Meas.)

S00°40'22"E - 2657.00' (Meas.)

2011, Alum. Cap,
0.4' Below Ground
Lat: 40.838908°
Long: 103.784997°

2011, Alum. Cap,
0.4' High
Lat: 40.839011°
Long: 103.765839°

NOTE:
THE PROPOSED TARGET BOTTOM HOLE
BEARS S00°00'43"E 9984.71' FROM THE
PROPOSED TOP OF PRODUCTION WHICH IS
LOCATED IN THE NW 1/4 NW 1/4 OF
SECTION 8, T10N, R57W, 6th P.M. AT 551'
FNL 808' FWL.

HORSETAIL #08D-1735
Target Bottom Hole

1917, Brass Cap,
0.5' High
Lat: 40.831661°
Long: 103.784878°

S89°34'38"W
2653.48' (Meas.)

1917, Brass Cap,
0.5' High
Lat: 40.831661°
Long: 103.775292°

S89°32'06"W - 2651.09' (Meas.)

1917, Brass Cap,
0.6' High
Lat: 40.831714°
Long: 103.765714°

LEGEND:

└─┘ = 90° SYMBOL

▲ = SECTION CORNERS LOCATED.

○ = TARGET BOTTOM HOLE.

◆ = TOP OF PRODUCTION.

NAD 83 (TARGET BOTTOM HOLE)

LATITUDE = 40°49'54.84" (40.831900)
LONGITUDE = 103°46'56.99" (103.782497)

NAD 27 (TARGET BOTTOM HOLE)

LATITUDE = 40°49'54.89" (40.831914)
LONGITUDE = 103°46'55.19" (103.781997)

WHITING OIL & GAS CORP.

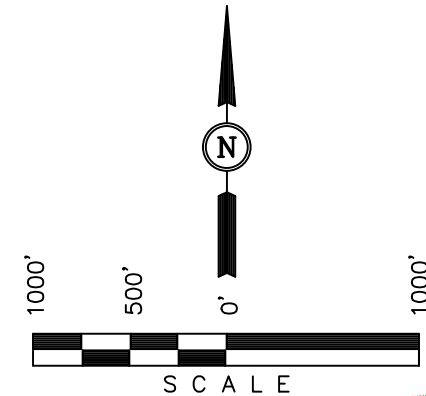
Well location, HORSETAIL #08D-1735 (TARGET
BOTTOM HOLE), located as shown in the SW 1/4
SW 1/4 of Section 17, T10N, R57W, 6th P.M.,
Weld County, Colorado.

BASIS OF ELEVATION

SPOT ELEVATION LOCATED AT THE NORTHEAST CORNER OF
SECTION 15, T9N, R58W, 6th P.M. TAKEN FROM THE
GATEHOOK SPRING, QUADRANGLE, COLORADO, WELD COUNTY,
7.5 MINUTE QUAD (TOPOGRAPHIC MAP) PUBLISHED BY THE
UNITED STATES DEPARTMENT OF THE INTERIOR, GEOLOGICAL
SURVEY. SAID ELEVATION IS MARKED AS BEING 4679 FEET.

BASIS OF BEARINGS

BASIS OF BEARINGS IS A G.P.S. OBSERVATION.



CERTIFICATION

THIS IS TO CERTIFY THAT THE ABOVE PLAT WAS PREPARED FROM
FIELD NOTES OF ACTUAL SURVEYS MADE BY ME OR UNDER MY
SUPERVISION AND THAT THE SAME ARE TRUE AND CORRECT TO THE
BEST OF MY KNOWLEDGE AND BELIEF.

REGISTERED LAND SURVEYOR
REGISTRATION NO. 28285
STATE OF COLORADO
03-22-16

REV: 03-22-16 S.S.

REV: 03-02-16 S.S.

REV: 02-13-15 K.B.

UINTAH ENGINEERING & LAND SURVEYING
85 SOUTH 200 EAST - VERNAL, UTAH 84078
(435) 789-1017

SCALE 1" = 1000'	DATE SURVEYED: 12-09-14	DATE DRAWN: 12-29-14
PARTY DALLAS NIELSEN J.S. K.B.	REFERENCES G.L.O. PLAT	
WEATHER COLD	FILE WHITING OIL & GAS CORP.	