



Scale: 5" / 100'
Measured Depth Log

Well Name Fairview 10

Location Sec 5, T2N, R68W

State CO

County Weld

Country USA

Rig Number Savanna 802

API Number 05-123-41517

Field Wattenberg

Geographic Region DJ Basin

Drilling Completed 12/15/2015

Spud Date 12/10/2015

Surface Coordinates Lat: 40° 9' 56.7684" N
Long: 105° 2' 8.0448" W

Bottom Hole Coordinates Lat: 40° 8' 18.461" N
Long: -104° 57' 59.162" W

Ground Elevation 4948'

K.B. Elevation 4963'

Logged Interval 5000' **To** 6700'

Total Depth 13954' MD

Formation Niobrara B

Type of Drilling Fluid Invert

Operator

Company Extraction Oil & Gas

Address 1888 Sherman St., Suite 200
Denver, CO 80203







Geologist

Name Jared Rouse

Company Extraction Oil & Gas

Address 1888 Sherman St., Suite 200
Denver, CO 80203

Zone Color Coding

 Oil	 Condensate	 Gas
 Note	 Core	 Pressure
 Error	 Water	 Seal



Other

Equipment ML-197

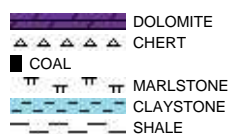
Comments Start: 12-12-15
End: 12-15-15

Logger Names Mark Gross/ Stuart Printz

Services Provided 2-man logging

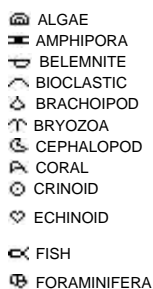
Address Empirica, LLC.
6360 W Sam Houston Pkwy N
Suite 100
Houston, TX 77041

Rock Types



Accessories

Fossils



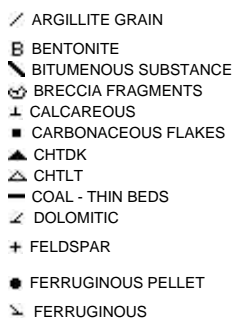
F FOSSIL



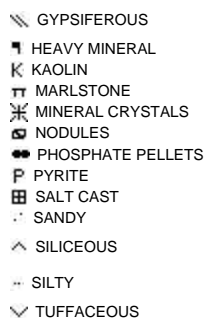
Minerals



ARGILLACEOUS



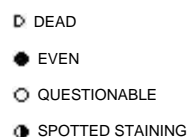
GLAUCONITE



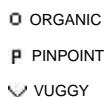
Stringer



Oil Show



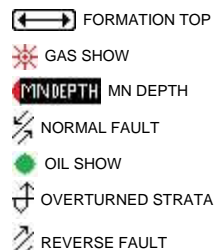
Porosity



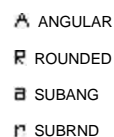
Engineering



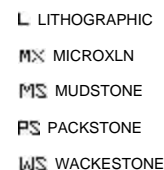
Other Symbols



Rounding



Textures



Sorting

PROPERTY

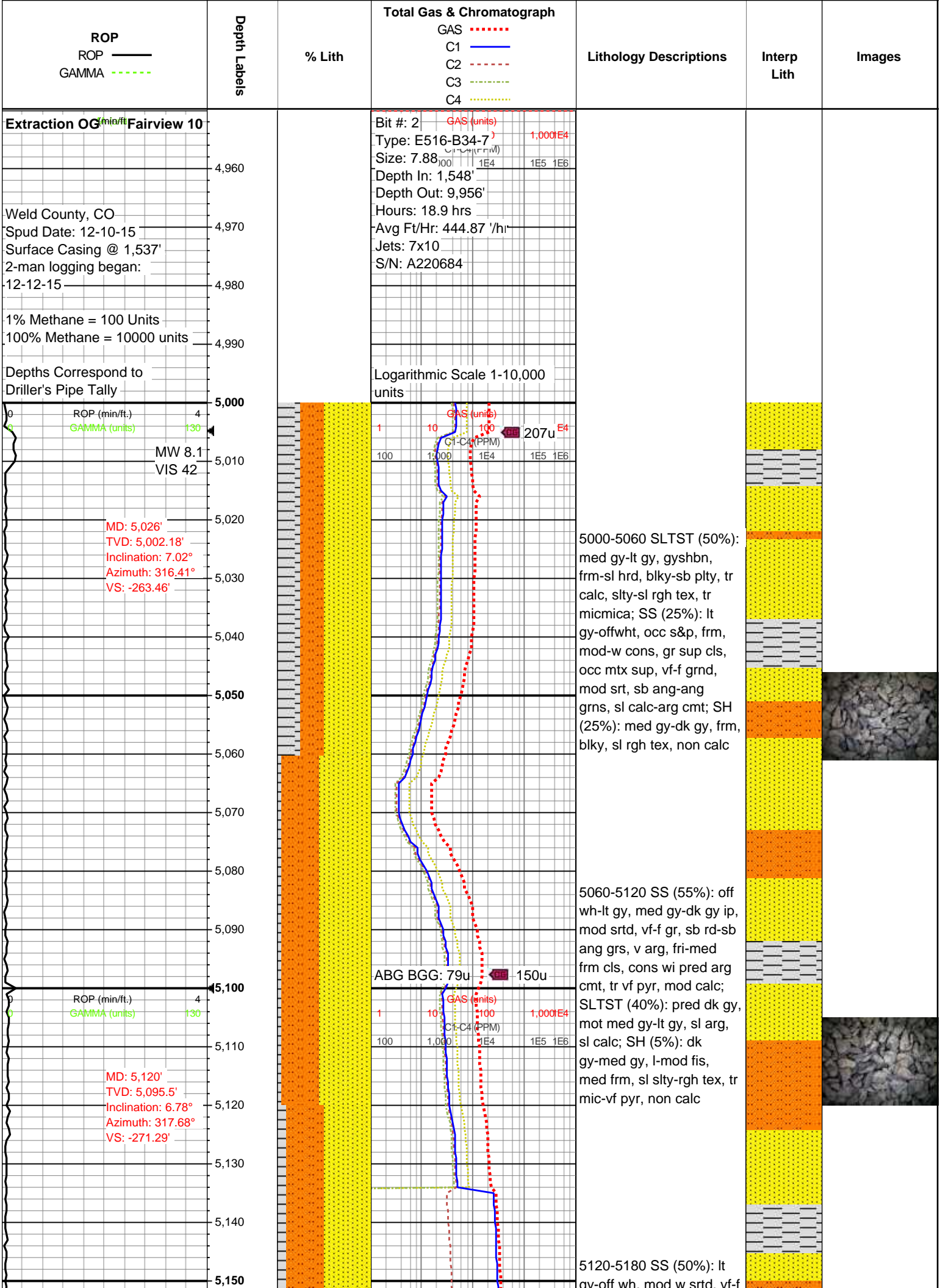
- E EARTHY
- ▣ FENESTRAL
- F FRACTURE
- × INTERCRYSTALLINE
- ⊕ INTEROOLITIC
- ⚡ MOLDIC

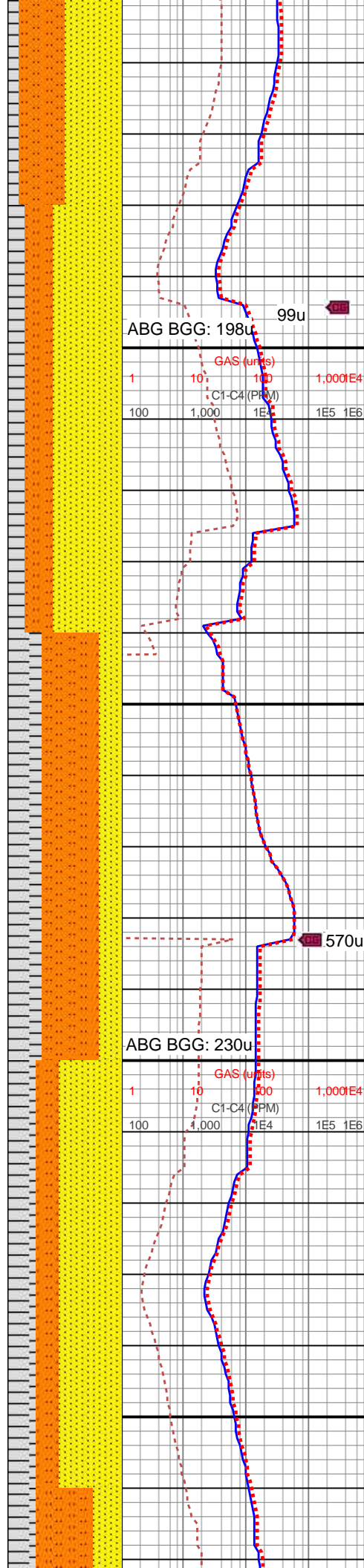
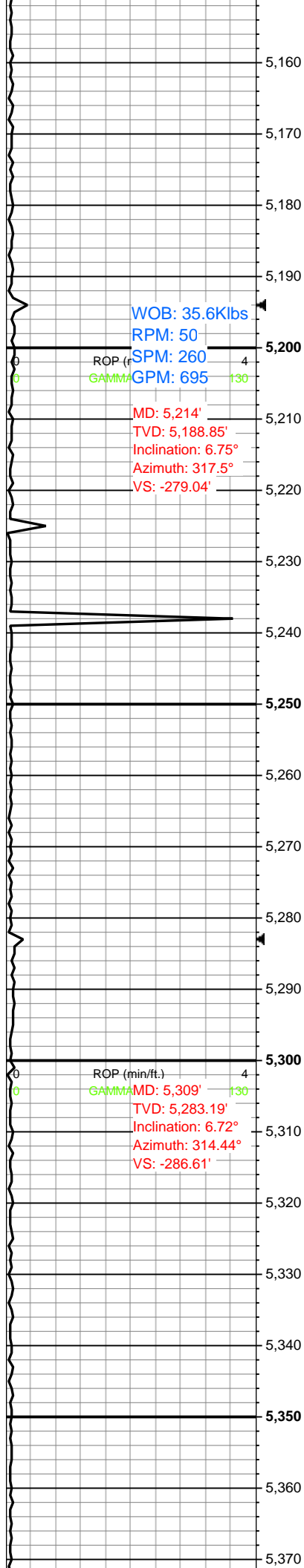
- ◀ CONNECTION (LEFT)
- ▶ CONNECTION (RIGHT)
- ⬅ CONNECTION GAS
- ⬇ CORE - LOST
- CORE - RECOVERED
- ⋮ DST INTERVAL
- ⚡ FAULT

- ◀ SIDEWALL CORE (LEFT)
- ▶ SIDEWALL CORE (RIGHT)
- ▨ SLIDE
- DS SURVEY
- ⬅ TRIP GAS
- ◀ WIRELINE TESTED - LEFT
- ▶ WIRELINE TESTED - RT

- BS BOUNDSTONE
- C CHALKY
- CX CRYPTOXLN
- E EARTHY
- F× FINELYXLN
- GS GRAINSTONE

- M MODERATE
- P POOR
- W WELL



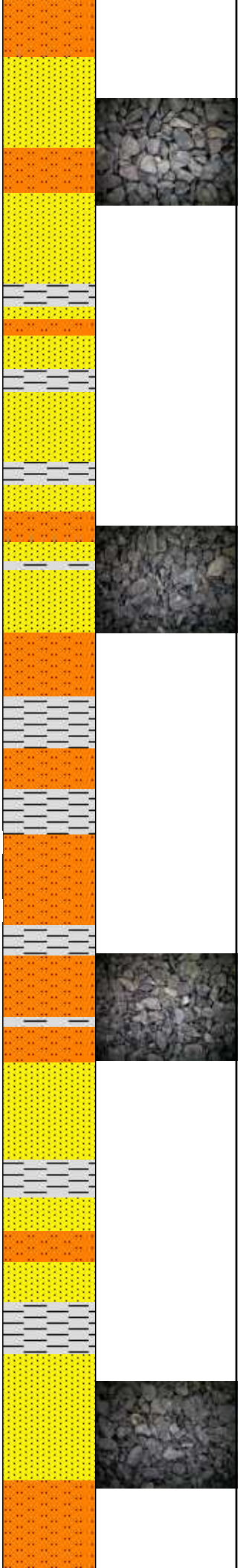


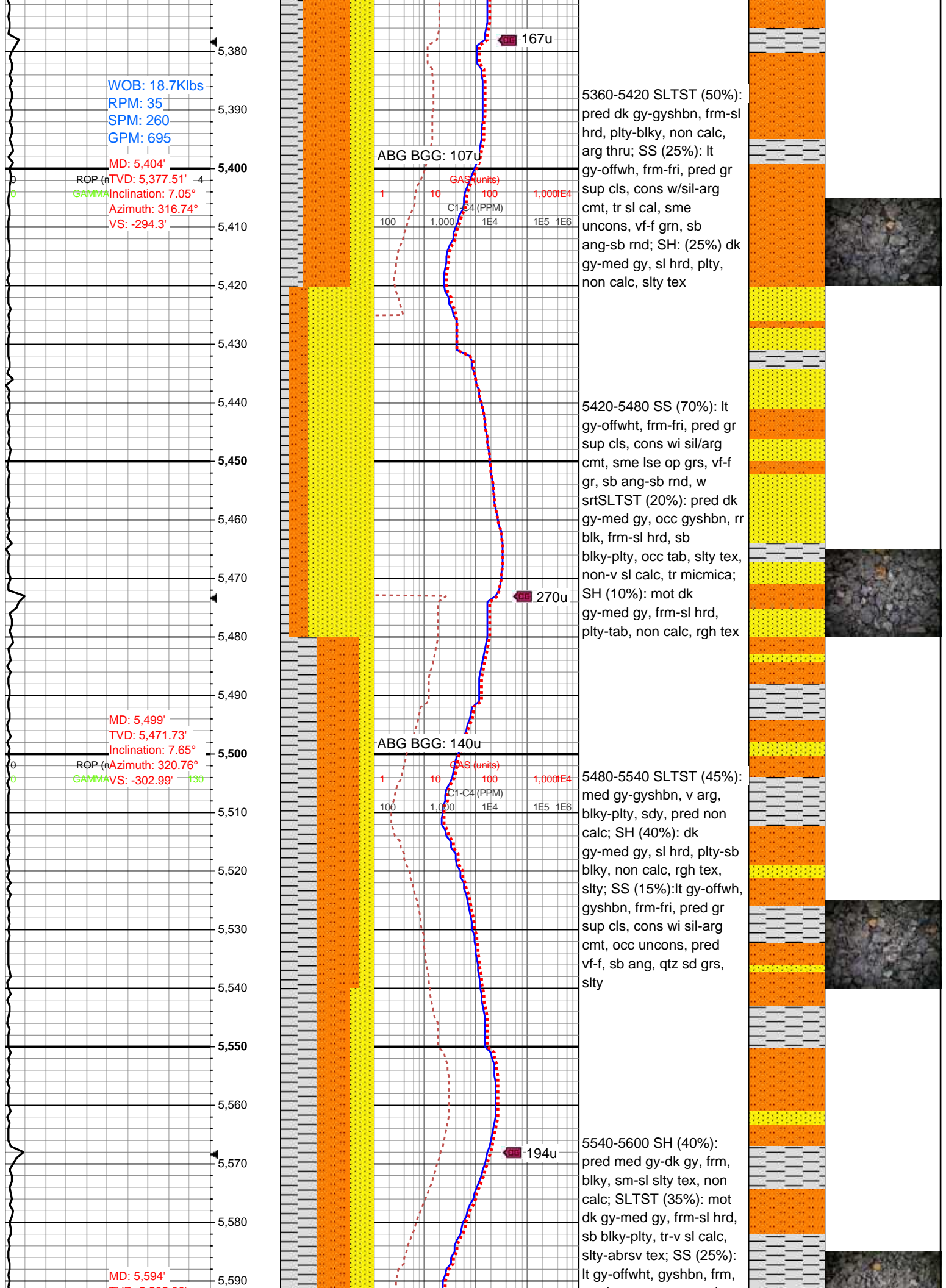
gy slt frn, med w srt, v arg, med frm, gr sup cls, cons wi sil cmt-arg cmt, sl slty thru, sl calc cmt; SLTST (40%): gy-sl brn gy, v arg, occ slty-sdy, pred non calc; SH (10%): med gy-dk gy, frm-v frm, sl brit, mod fis, sb plty, sm-slty tex, non calc

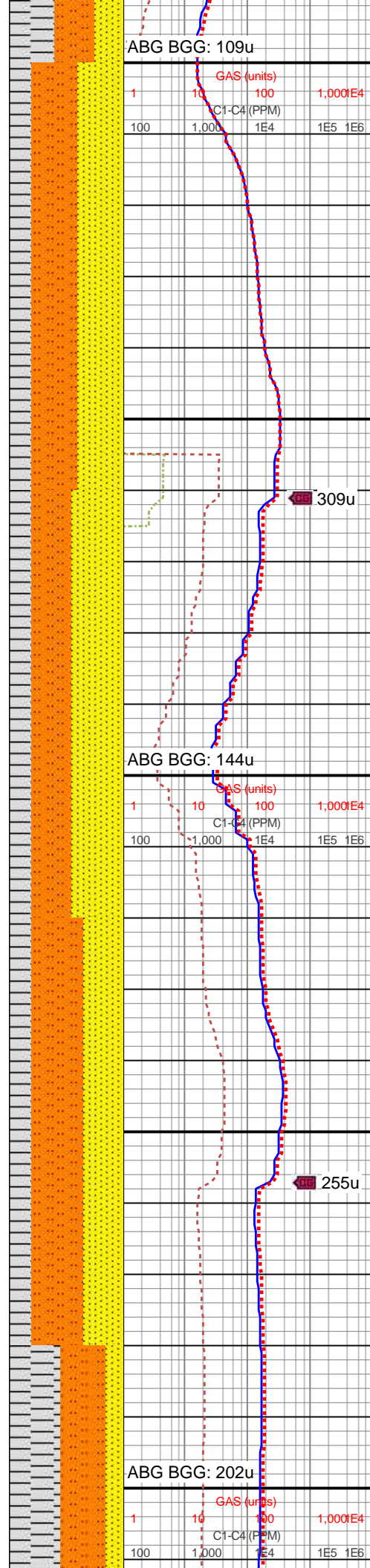
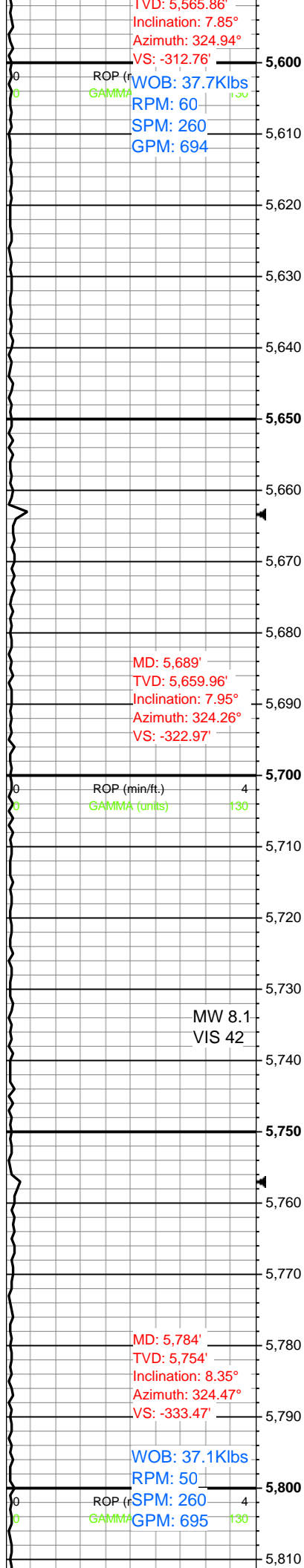
5180-5240 SS (60%): med gy-lt gy-offwht, frm-fri, pred gr sup cl, sil-arg cmt, com uncon, vf-f, sb ang-sb rnd; SLTST (25%): dk gy-gyshbn, frm-sl hrd, plty-blky, non calc, arg thru; SH (10%): dk gy-med gy, sl hrd, non calc, plty-tab, rgh-slty tex

5240-5300: SLTST (50%): med gy-sl dk gy, gyshbn, frm-sl hrd, plty-sb blky, non-sl calc, tr sm tex, pred slty tex; SH (30%): med gy-dk gy, frm, blky, non calc, tr micmica, slty; SS (20%): pred lt gy, gyshbn-offwht, frm, w cons, gr sup-mtx sup cls, sme uncon, mod-w srt, vf grnd, occ f, sb ang-ang grns, arg-sl cal

5300-5360 SS (55%): pred lt gy-gy, occ off wh sdy intbds-clr sd grs, mod w-w srted vf grs, med frm gr sup cls cons wi sil cmt-com arg cmt, sl slty thru, occ vf pyr, sil-cal cmt, pred sl calc; SH (25%): med gy-lt gy, frm-v frm, sl brit, sb plty, sm-slty-sdy tex, non calc; SLTST (20%): pred gy-sl brn gy, v arg, occ sdy, pred non calc







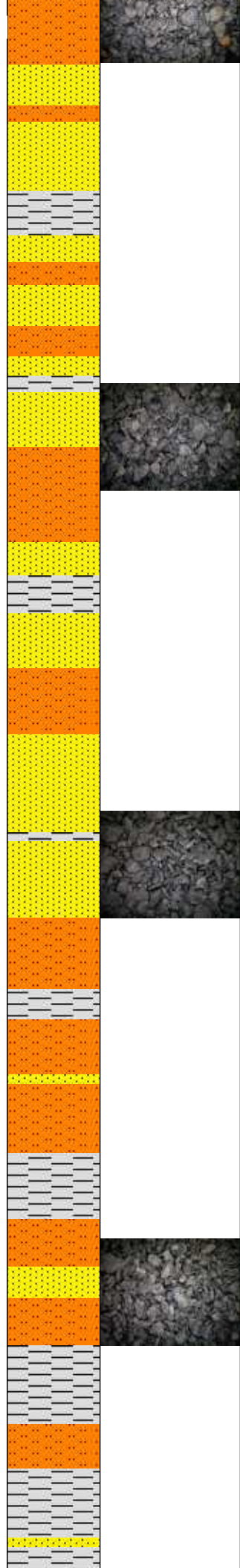
mod w cons, gr sup cls,
vf-f gr, mod srt, sb ang-sb
rnd grns, sl calc-arg cmt

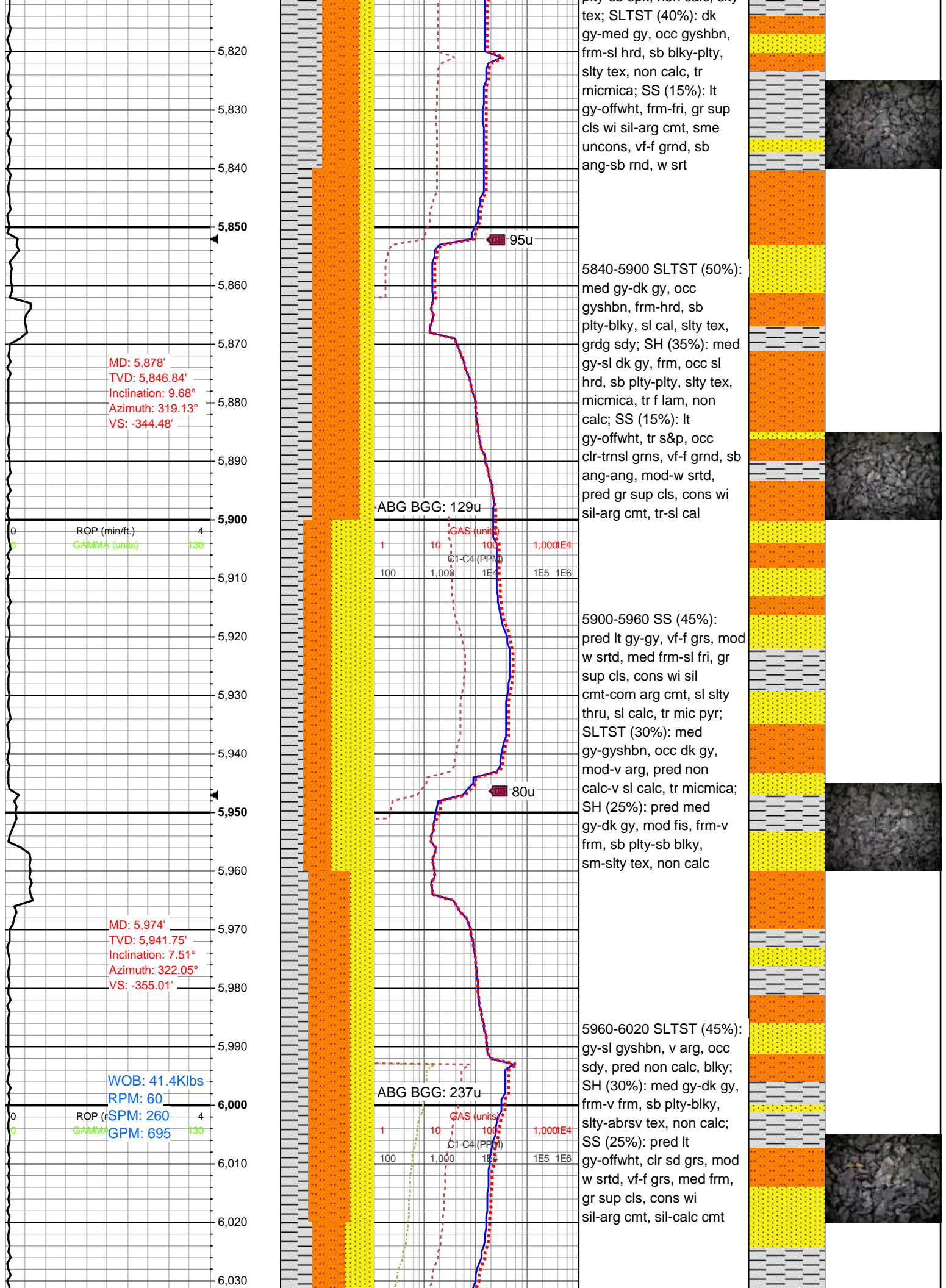
5600-5660 SS (40%):
pred lt gy-offwht, sdy
intbds-clr sd grs, mod w
srted, vf-f grs, med frm-fri,
gr sup cls cons wi
sil-com arg cmt, sl slty
thru, occ vf pyr, sil-calc
cmt; SLTST (40%): pred
med gy-sl brn gy, v arg,
grdg to ss, pred non calc;
SH (20%): med gy-dk gy,
frm-v frm, sb plty-tab,
slty-abrsv tex, non calc

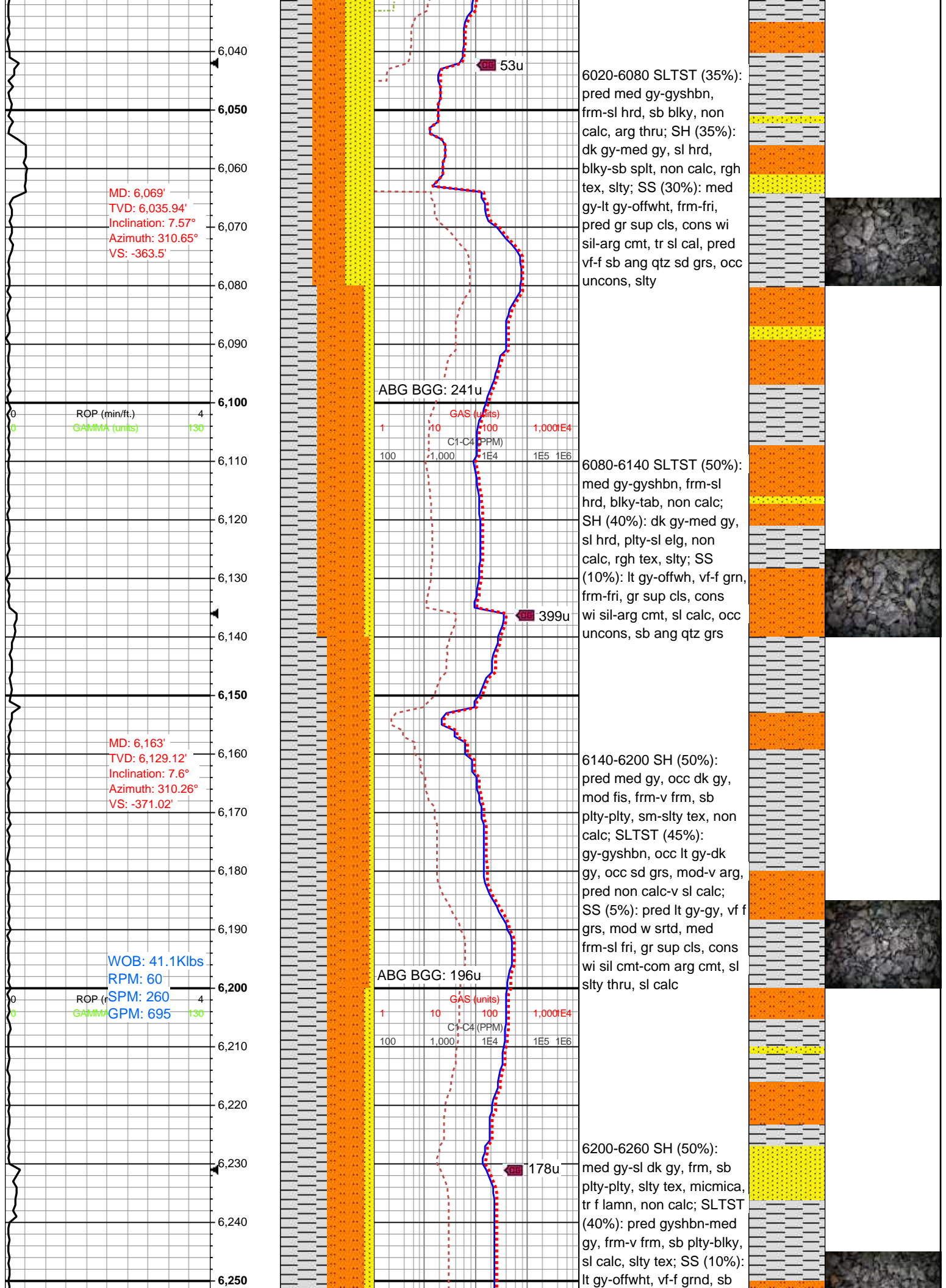
5660-5720 SS (45%):
med gy-lt gy-offwh, frm,
fri, pred gr sup cls wi
sil-arg cmt, tr sl cal, occ
uncons, pred vf-f sb ang
qtz sd grs, slty; SLTST
(35%): dk gy-gyshbn,
frm-sl hrd, plty-sb blkly,
non calc, arg thru; SH:
(20%) dk gy-med gy, sl
hrd, sb plty, non calc, rgh
tex, slty, hi cly content

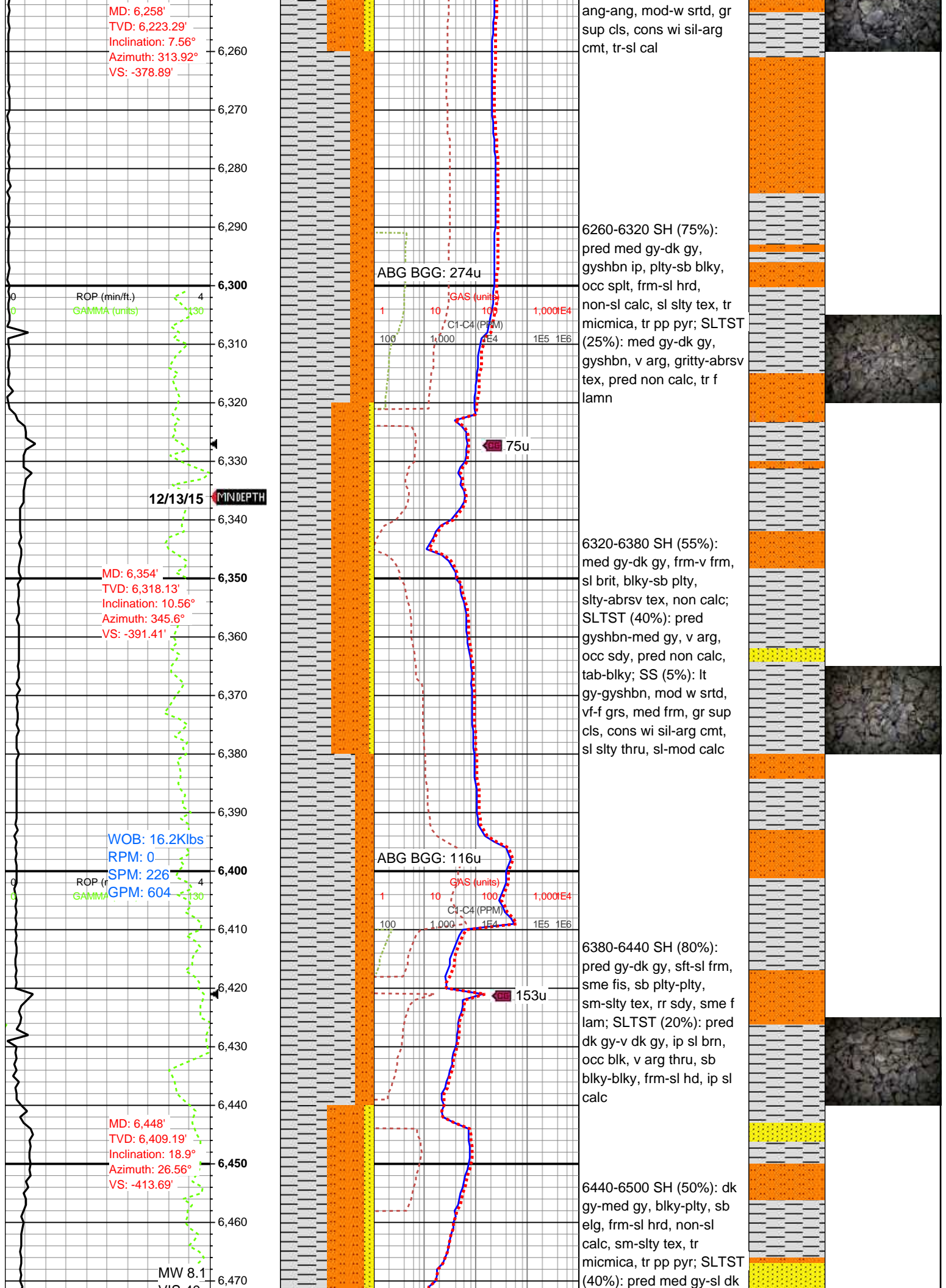
5720-5780 SLTST
(45%):pred med
gy-gyshbn, frm-sl hrd, sb
blkly-plty, v arg, occ sdy,
predy non calc; SS
(35%): predy lt gy, occ
offwht-clr sd grs, mod w
srted, vf-f grs, frm-sl fri,
sil-arg cmt, sl slty thru;
SH (20%): dk gy-med gy,
frm, plty-sb blkly,
sm-abrsv tex, micmica,
non calc

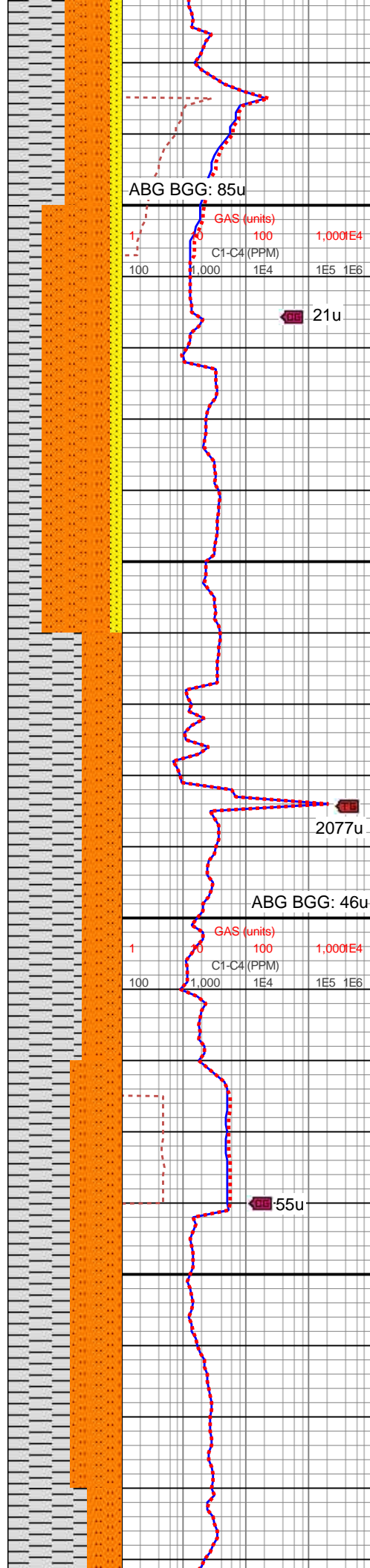
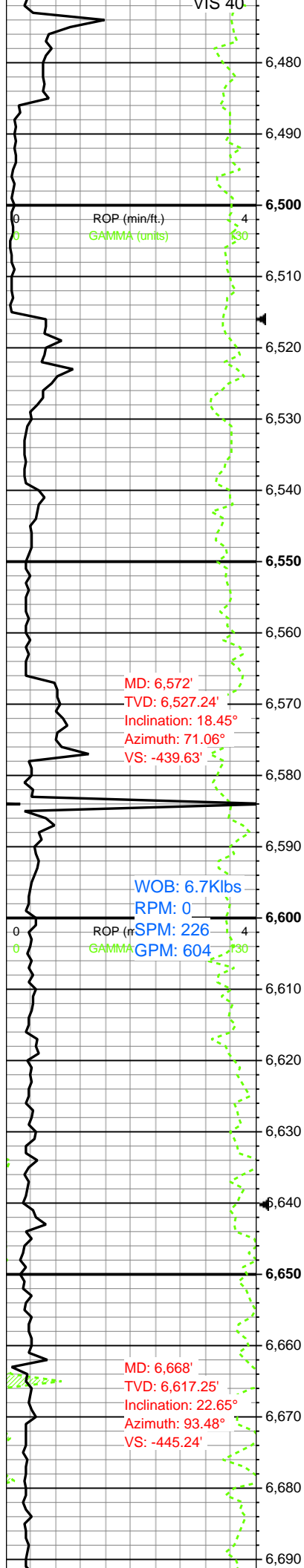
5780-5840 SH (45%): dk
gy-med gy, frm-sl hrd,
plty-sb slt, non calc, slty











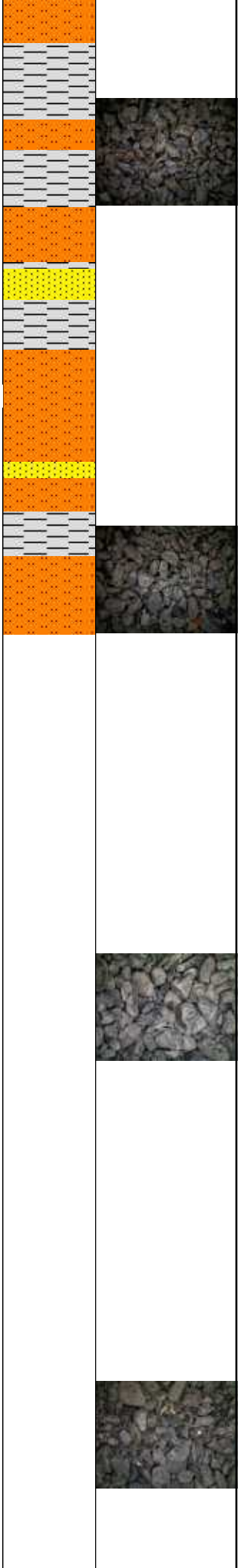
gy, gyshbn, sl mot ip, frm-sl hrd, sb blk-pty, occ sl calc, pred rgh tex, tr-scat sdy, occ arg, tr micmica; SS (10%): gyshbn-lt gy, offwht, frm-sl fri, sb ang-ang, vf-f grn, cons wi sil-arg cmt, grdg sltst, sl calc

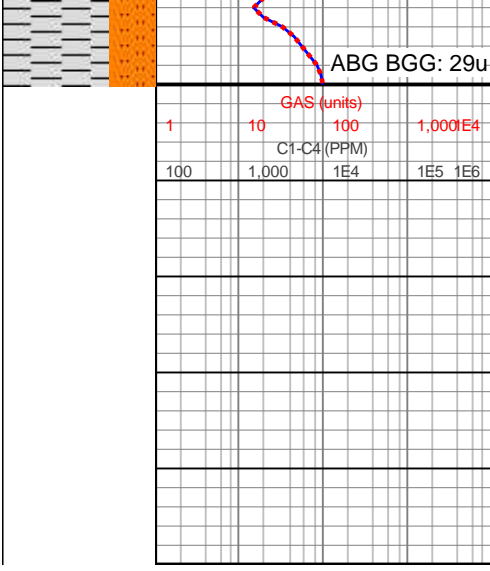
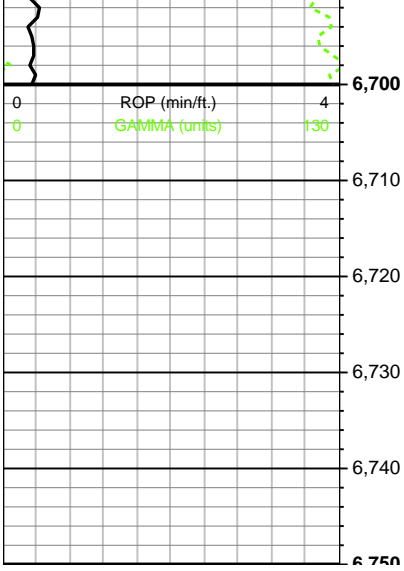
6500-6560 SLTST (60%): pred med gy-gyshbn, frm-sl hrd, sb blk, non calc, arg thru; SH (30%): dk gy-med gy, sl hrd, blk-sb spl, non calc, rgh tex, slty; SS (10%): lt gy-offwht, vf-f grs, med frm, mod w srtd, cons, mn arg cmt, sl slty thru, sl calc

Note: TOO H to P/U Agitator

6560-6620 SH (65%): dk gy-med gy, sl hrd, pty-blky, non calc, rgh tex, slty; SLTST (35%): med gy-gyshbn, v arg, blk-pty, sdy, non calc

6620-6680 SH (50%): dk gy-med gy, dk gyshbn, frm-sl hrd, sb pty-tab, abrv tex, tr f lamn, micmica, non calc; SLTST (45%): med gy-dk gy, frm-v frm, sb tab-blky, pty, sl calc, slty tex





Log Continued in
Horizontal Format