



Scale: 5" / 100'
Measured Depth Log

Well Name Fairview 8

Location Sec 5, T2N, R68W

State CO

County Weld

Country USA

Rig Number Savanna 802

API Number 05-123-41525

Field Wattenberg

Geographic Region DJ Basin

Drilling Completed 1/2/2016

Spud Date 12/9/2015

Surface Coordinates Lat: 40° 9' 56.7576" N
Long: 105° 2' 7.3248" W

Bottom Hole Coordinates Lat: 40° 9' 54.0407" N
Long: 105° 0' 35.1682" W

Ground Elevation 4,948'

K.B. Elevation 4,963'

Logged Interval 5,000' To 6,600'

Total Depth 14,420'

Formation Niobrara B

Type of Drilling Fluid Invert

Operator

Company Extraction Oil & Gas

Address 1888 Sherman St., Suite 200
Denver, CO 80203










Geologist

Name Jared Rouse

Company Extraction Oil & Gas

Address 1888 Sherman St., Suite 200
Denver, CO 80203

Zone Color Coding

 Oil	 Condensate	 Gas
 Note	 Core	 Pressure
 Error	 Water	 Seal



Other

Equipment ML-197

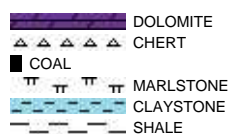
Logger Names Brian Ferwerda / Mark Gross

Services Provided 2-Man Logging

Comments Start: 12-31-15
End: 1-2-16

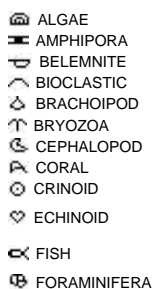
Address Empirica, LLC.
6360 W Sam Houston Pkwy N
Suite 100
Houston, TX 77041

Rock Types



Accessories

Fossils



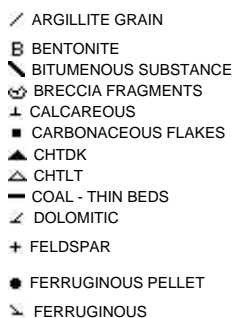
Fossil



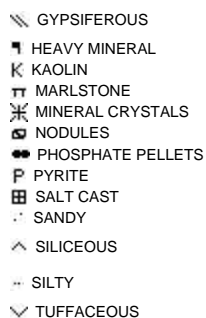
Minerals



Argillaceous



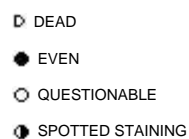
Glauconite



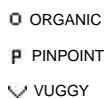
Stringer



Oil Show



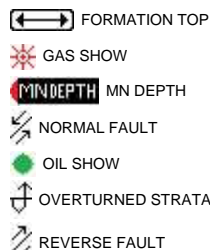
Porosity



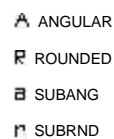
Engineering



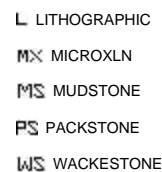
Other Symbols



Rounding



Textures



Sorting

PROPERTY

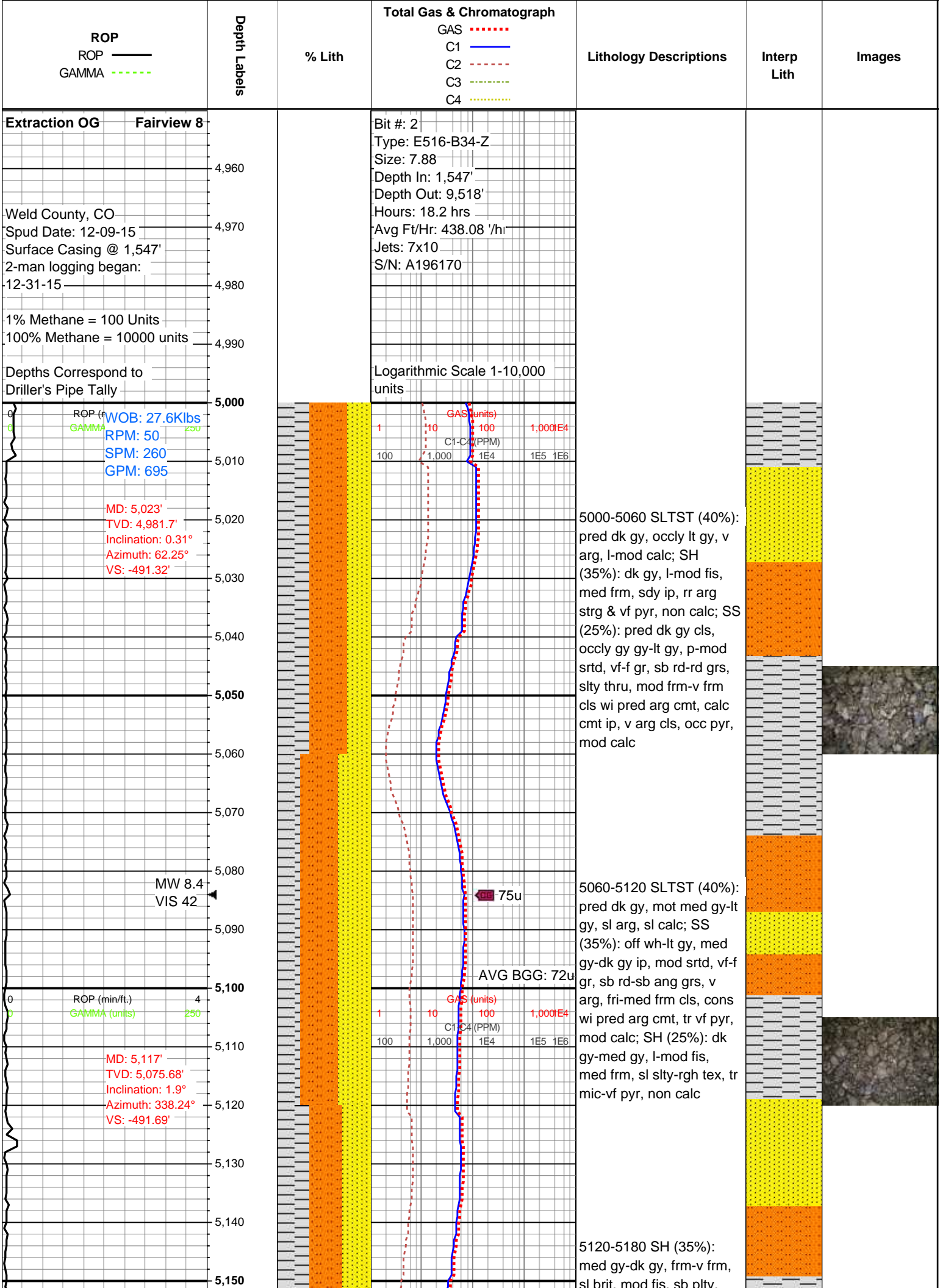
- E EARTHY
- ▣ FENESTRAL
- F FRACTURE
- × INTERCRYSTALLINE
- ⊕ INTEROOLITIC
- ⚡ MOLDIC

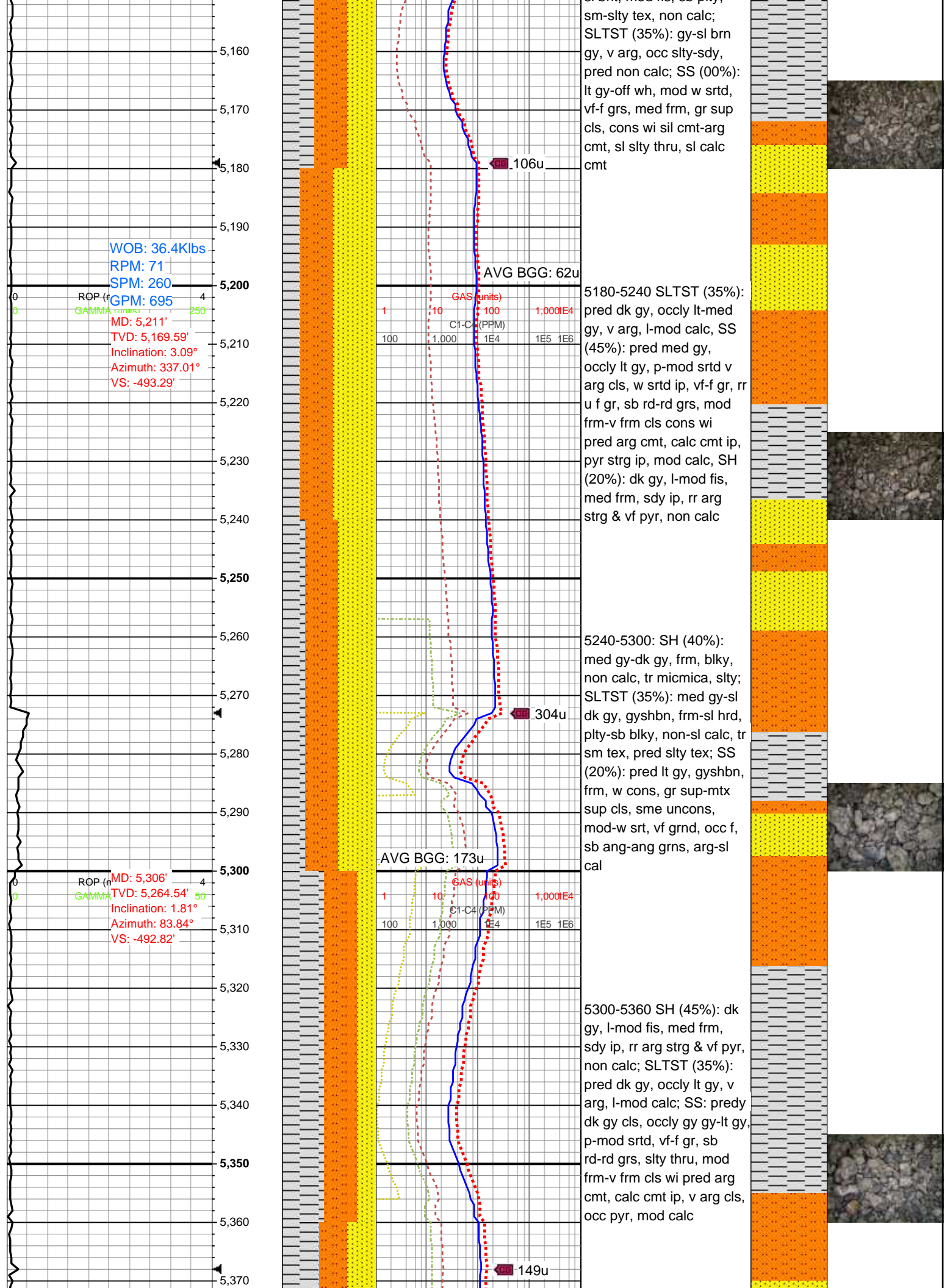
- ◀ CONNECTION (LEFT)
- ▶ CONNECTION (RIGHT)
- ⬅ CONNECTION GAS
- ⬇ CORE - LOST
- CORE - RECOVERED
- ⋮ DST INTERVAL
- ⚡ FAULT

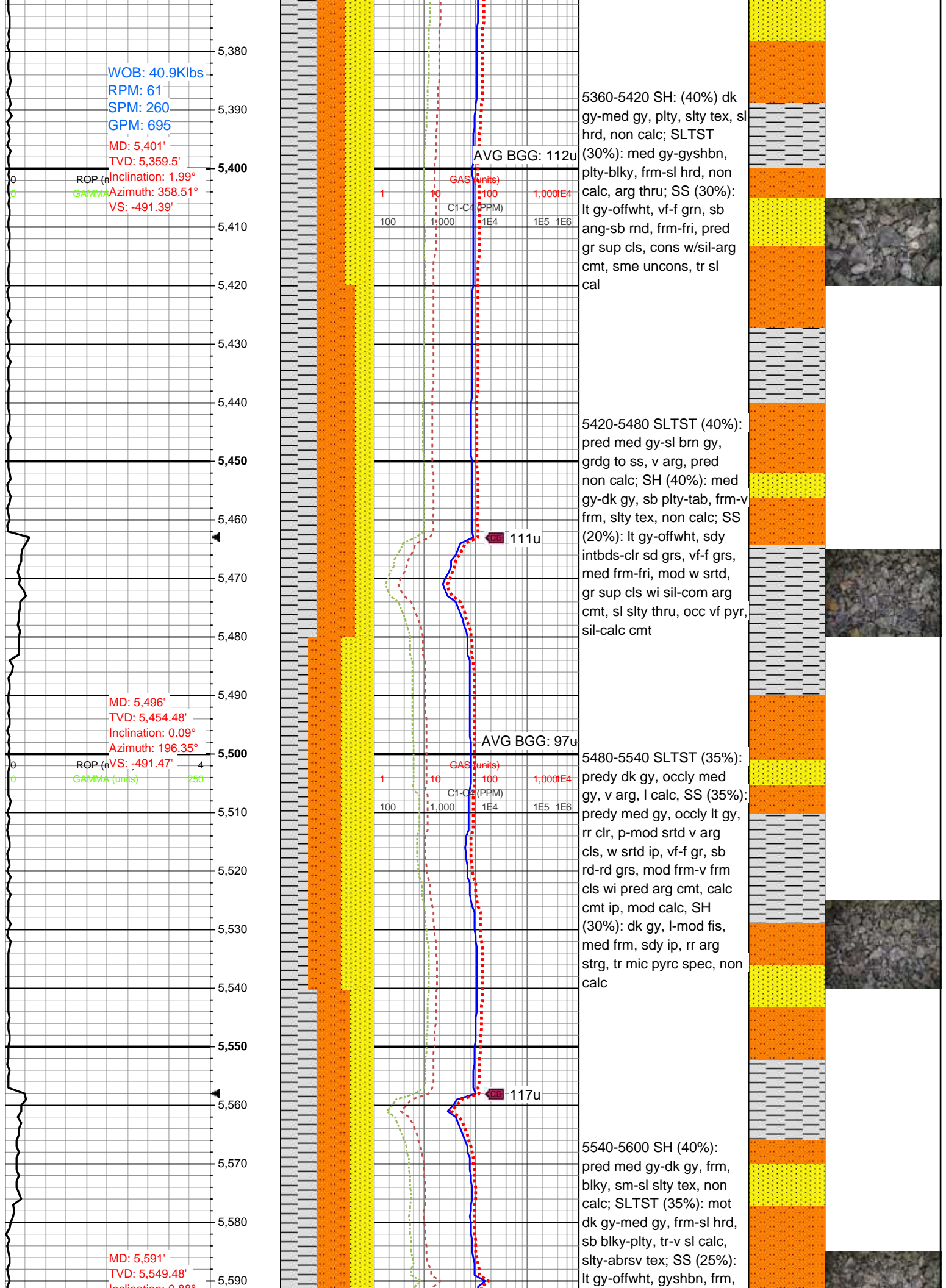
- ◀ SIDEWALL CORE (LEFT)
- ▶ SIDEWALL CORE (RIGHT)
- ▨ SLIDE
- DS SURVEY
- ⬅ TRIP GAS
- ◀ WIRELINE TESTED - LEFT
- ▶ WIRELINE TESTED - RT

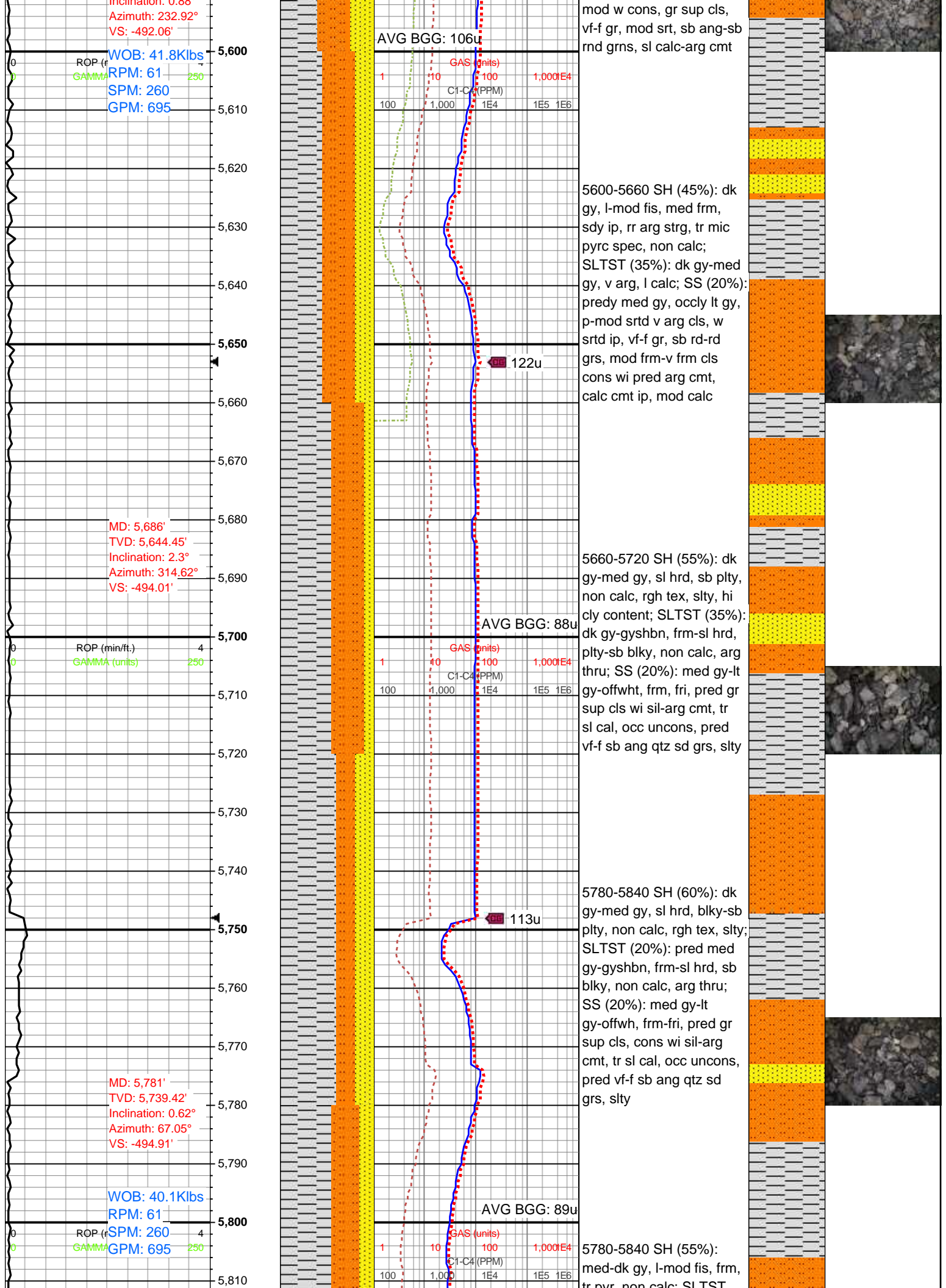
- BS BOUNDSTONE
- C CHALKY
- CX CRYPTOXLN
- E EARTHY
- F× FINELYXLN
- GS GRAINSTONE

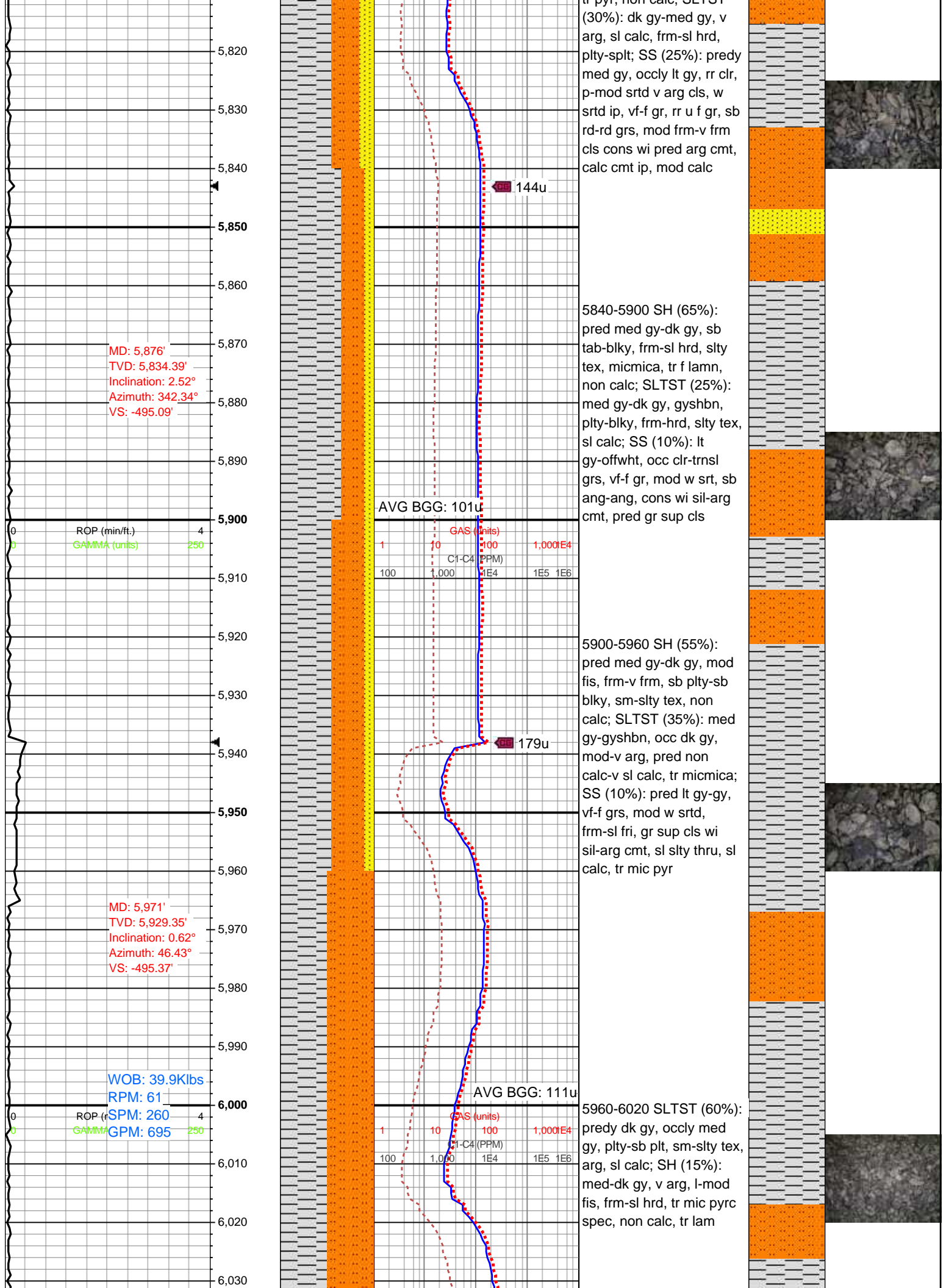
- M MODERATE
- P POOR
- W WELL

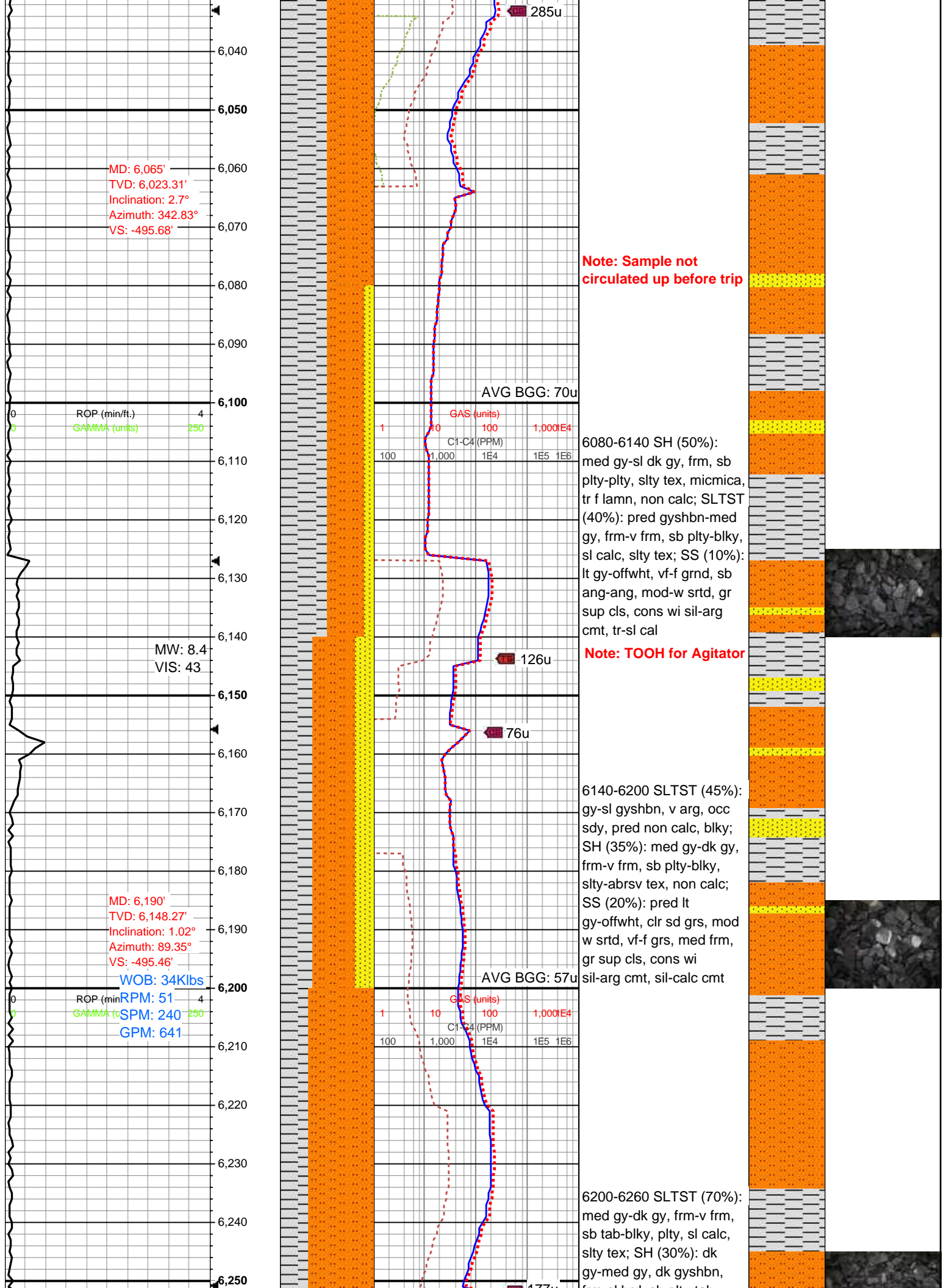












MD: 6,065'
TVD: 6,023.31'
Inclination: 2.7°
Azimuth: 342.83°
VS: -495.68'

Note: Sample not
circulated up before trip

AVG BGG: 70u

6080-6140 SH (50%):
med gy-sl dk gy, frm, sb
plty-plty, slty tex, micmica,
tr f lamn, non calc; SLTST
(40%): pred gyshbn-med
gy, frm-v frm, sb plty-blky,
sl calc, slty tex; SS (10%):
lt gy-offwht, vf-f grnd, sb
ang-ang, mod-w srtd, gr
sup cls, cons wi sil-arg
cmt, tr-sl cal

Note: TOOH for Agitator

126u

76u

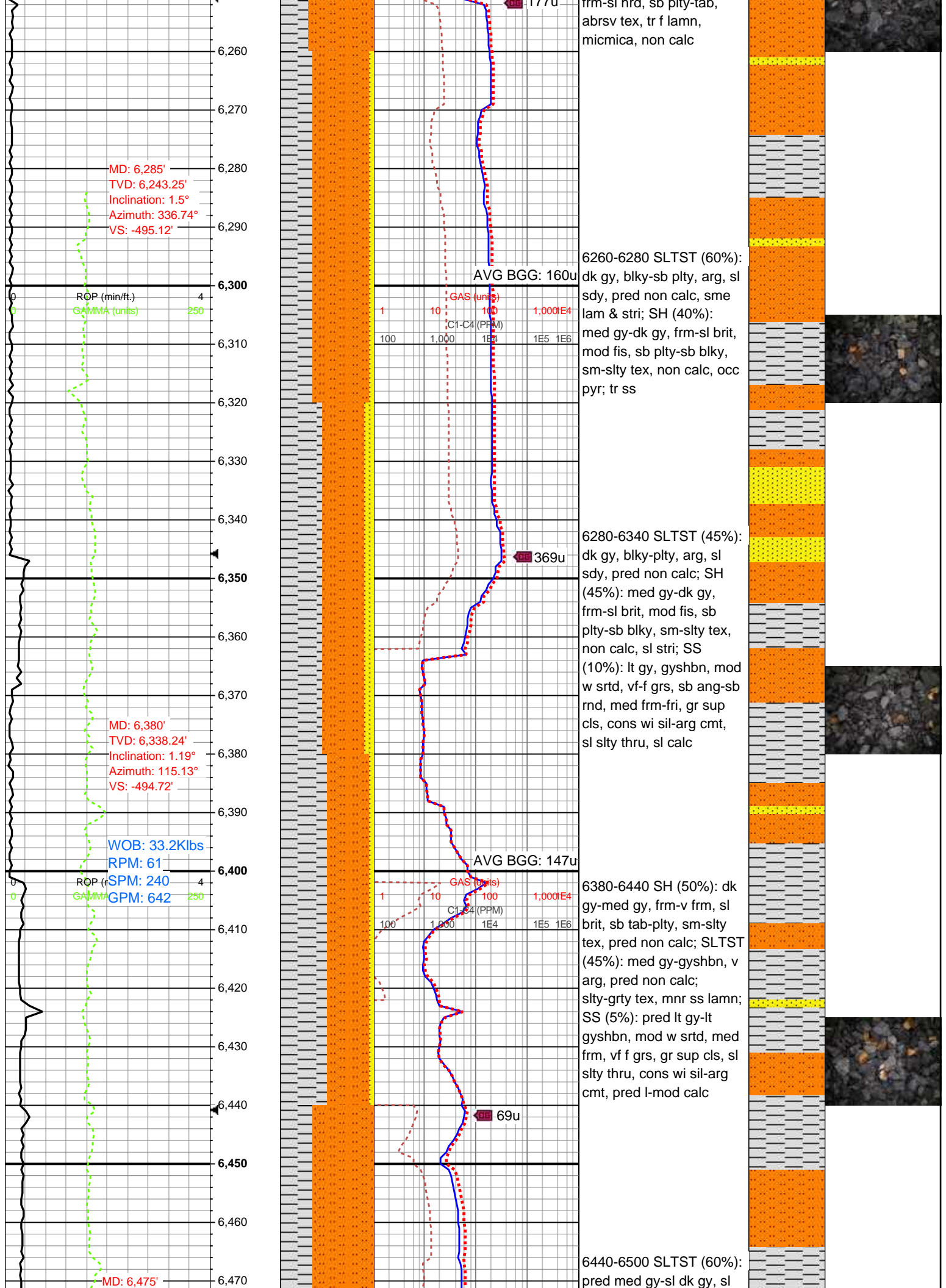
6140-6200 SLTST (45%):
gy-sl gyshbn, v arg, occ
sdy, pred non calc, blky;
SH (35%): med gy-dk gy,
frm-v frm, sb plty-blky,
slty-abrsv tex, non calc;
SS (20%): pred lt
gy-offwht, clr sd grs, mod
w srtd, vf-f grs, med frm,
gr sup cls, cons wi
sil-arg cmt, sil-calc cmt

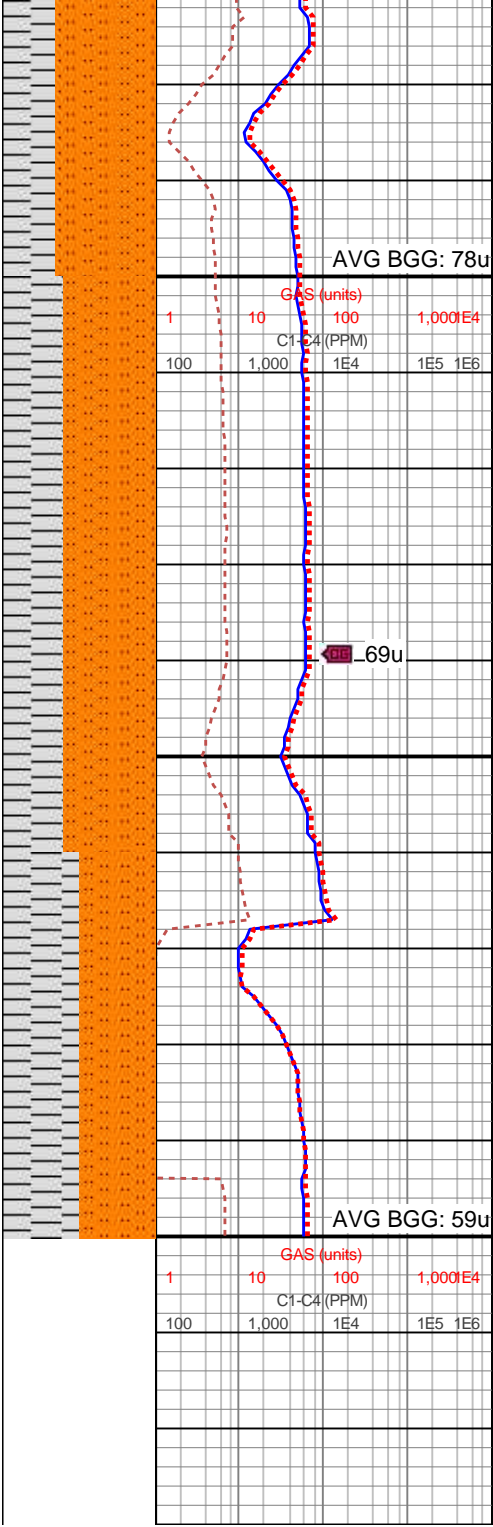
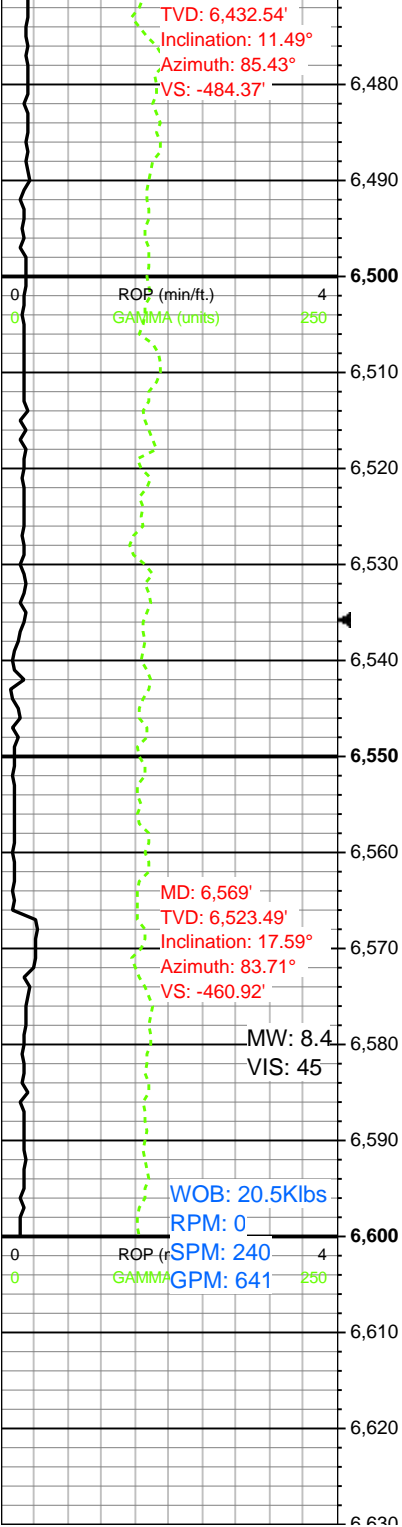
AVG BGG: 57u

MD: 6,190'
TVD: 6,148.27'
Inclination: 1.02°
Azimuth: 89.35°
VS: -495.46'

WOB: 34Klbs
RPM: 51
SPM: 240
GPM: 641

6200-6260 SLTST (70%):
med gy-dk gy, frm-v frm,
sb tab-blky, plty, sl calc,
slty tex; SH (30%): dk
gy-med gy, dk gyshbn,
frm-v frm, sb plty-blky,
sl calc, slty tex





mot ip, occ lt gy, frm-sl
hrd, sb blk-pty, occ sl
calc, pred rgh tex, tr-scat
sdy, occ arg, tr micmica;
SH (40%): dk gy-v dk gy,
occ blk, pred pty, occ sb
blk, tr spl, frm-sl hrd,
non-sl calc, sm-sl rgh
tex, tr micmica

6620-6680: SLTST
(60%): pred med gy-sl dk
gy, gyshbn, sl mot ip,
frm-sl hrd, sb blk-pty,
occ sl calc, pred rgh tex,
occ arg; SH (40%): dk
gy-med gy, blk-pty, sb
elg, frm-sl hrd, non-sl
calc, sm-slt tex, tr
micmica, tr pp pyr

Log Continued in
Horizontal Format