



Scale: 5" / 100'
Measured Depth Log

Well Name Fairview 6

Location Sec 5, T2N, R68W

State CO

County Weld

Country USA

Rig Number Savanna 802

API Number 05-123-41519

Field Wattenberg

Geographic Region DJ Basin

Drilling Completed 1/13/2016

Spud Date 12/8/2015

Surface Coordinates Lat: 40° 9' 56.7468" N
Long: 105° 2' 6.6012" W

Bottom Hole Coordinates Lat: 40° 9' 47.7648" N
Long: 105° 0' 35.1367" W

Ground Elevation 4,948'

K.B. Elevation 4,963'

Logged Interval 5,000' To 6,700'

Total Depth 14,486'

Formation Niobrara B

Type of Drilling Fluid Invert

Operator

Company Extraction Oil & Gas

Address 1888 Sherman St., Suite 200
Denver, CO 80203










Geologist

Name Jared Rouse

Company Extraction Oil & Gas

Address 1888 Sherman St., Suite 200
Denver, CO 80203

Zone Color Coding

 Oil	 Condensate	 Gas
 Note	 Core	 Pressure
 Error	 Water	 Seal



Other

Equipment ML-197

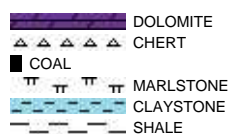
Comments Start: 1-11-16
End: 1-13-16

Logger Names Brian Ferwerda / Mark Gross

Services Provided 2-Man Logging

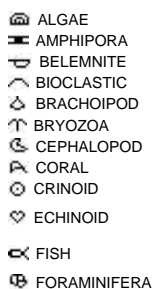
Address Empirica, LLC.
6360 W Sam Houston Pkwy N
Suite 100
Houston, TX 77041

Rock Types



Accessories

Fossils



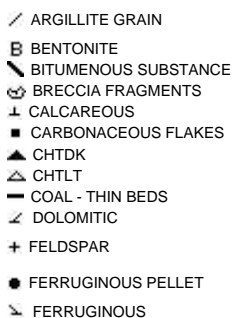
F FOSSIL



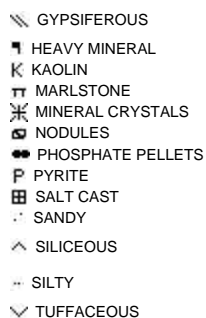
Minerals



ARGILLACEOUS



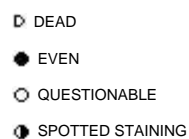
GLAUCONITE



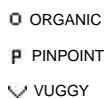
Stringer



Oil Show



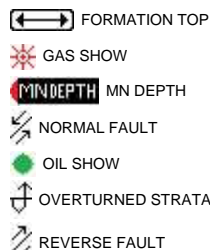
Porosity



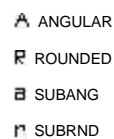
Engineering



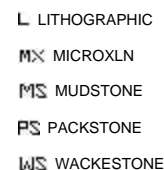
Other Symbols



Rounding



Textures



Sorting

PROPERTY

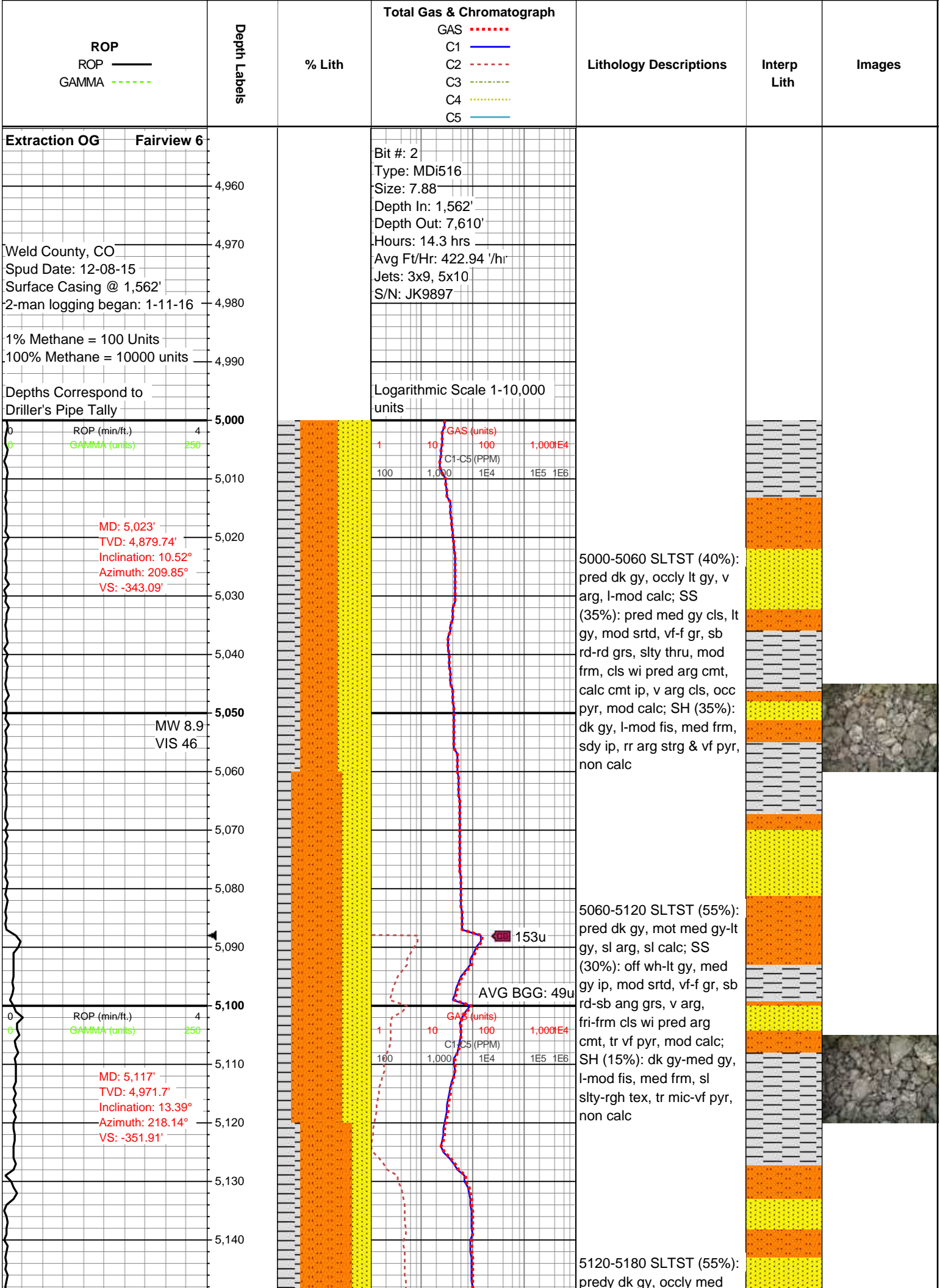
- E EARTHY
- ▣ FENESTRAL
- F FRACTURE
- × INTERCRYSTALLINE
- ⊕ INTEROOLITIC
- ⚡ MOLDIC

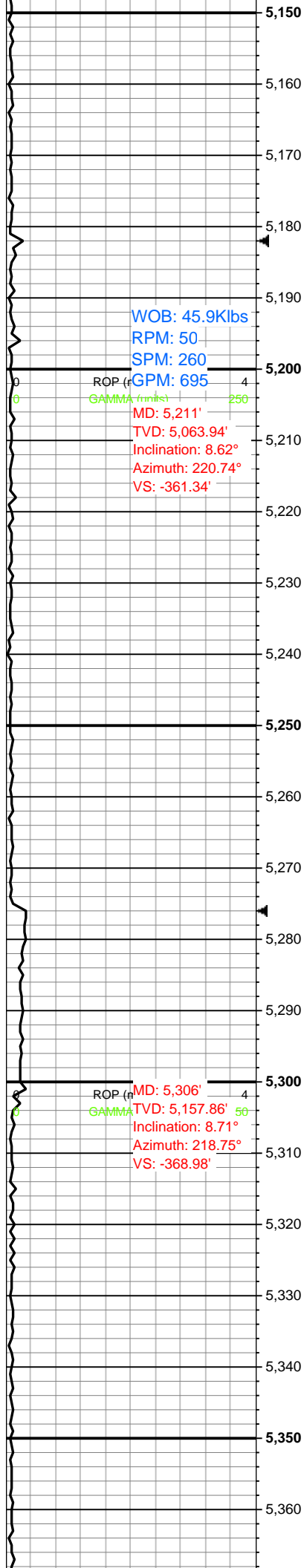
- ◀ CONNECTION (LEFT)
- ▶ CONNECTION (RIGHT)
- ⬅ CONNECTION GAS
- ⬇ CORE - LOST
- CORE - RECOVERED
- ⋮ DST INTERVAL
- ⚡ FAULT

- ◀ SIDEWALL CORE (LEFT)
- ▶ SIDEWALL CORE (RIGHT)
- ▨ SLIDE
- DS SURVEY
- ⬅ TRIP GAS
- ◀ WIRELINE TESTED - LEFT
- ▶ WIRELINE TESTED - RT

- BS BOUNDSTONE
- C CHALKY
- CX CRYPTOXLN
- E EARTHY
- F× FINELYXLN
- GS GRAINSTONE

- M MODERATE
- P POOR
- W WELL

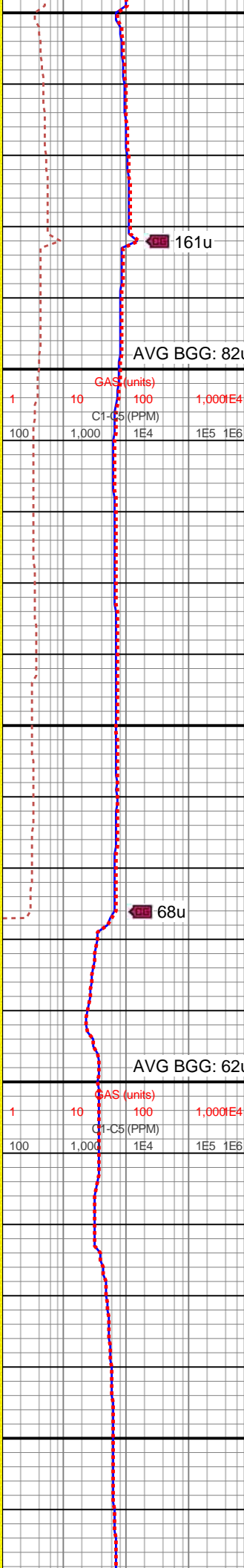
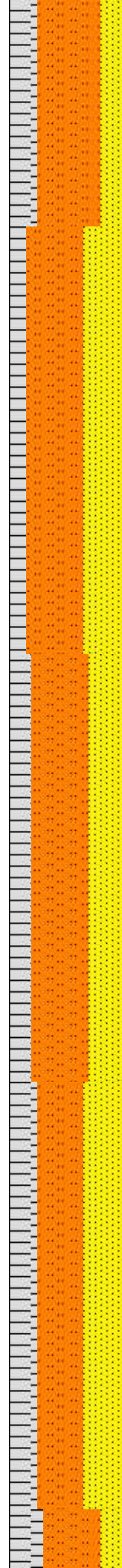




WOB: 45.9Klbs
RPM: 50
SPM: 260
GPM: 695

MD: 5,211'
TVD: 5,063.94'
Inclination: 8.62°
Azimuth: 220.74°
VS: -361.34'

MD: 5,306'
TVD: 5,157.86'
Inclination: 8.71°
Azimuth: 218.75°
VS: -368.98'



161u

AVG BGG: 82u

68u

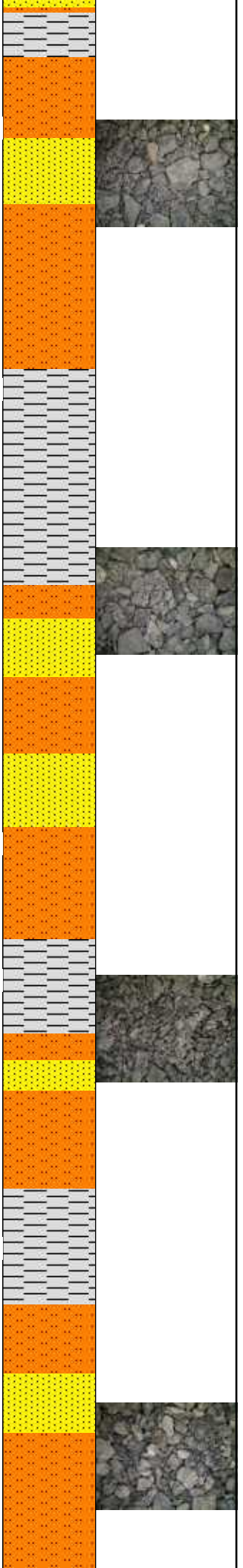
AVG BGG: 62u

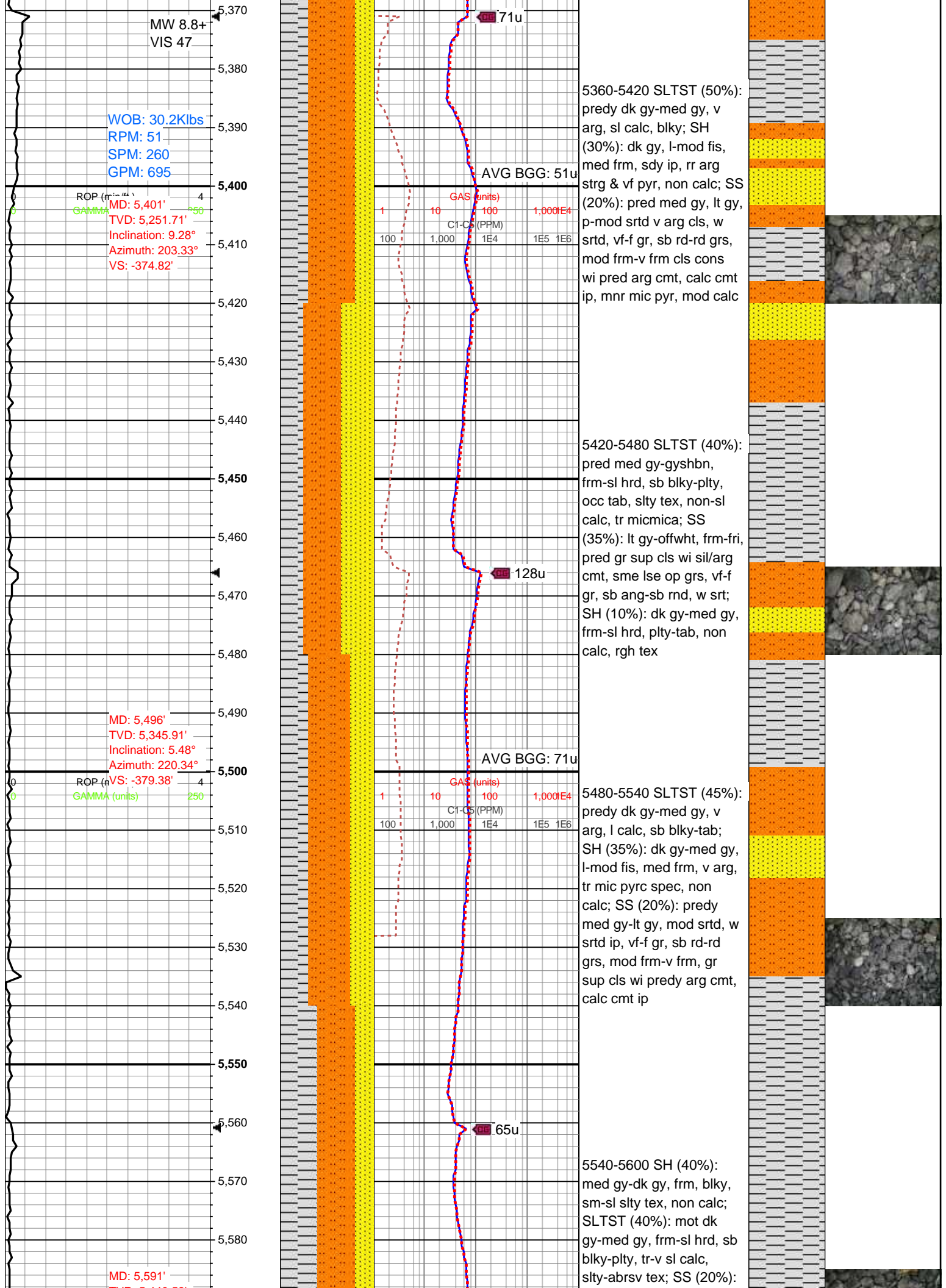
gy, v arg, l calc; SH (25%): dk gy, l-mod fis, med frm, sdy ip, v arg, tr mic pyrc spec, non calc; SS (20%): predy med gy, lt gy, mod srted v arg cls, w srted, vf-f gr, sb rd-rd grs, frm-v frm, cls wi pred arg cmt, calc cmt ip, mod calc

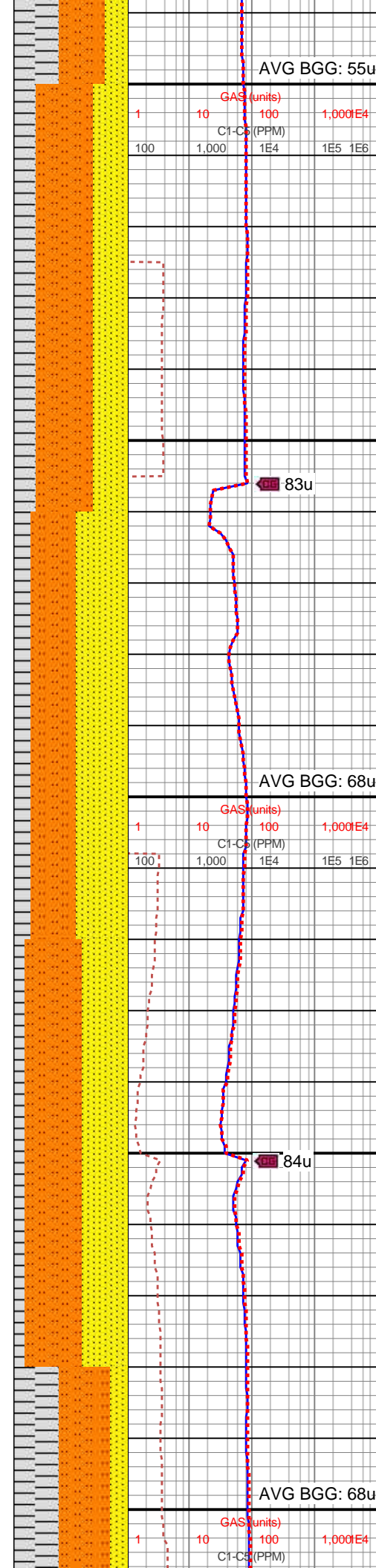
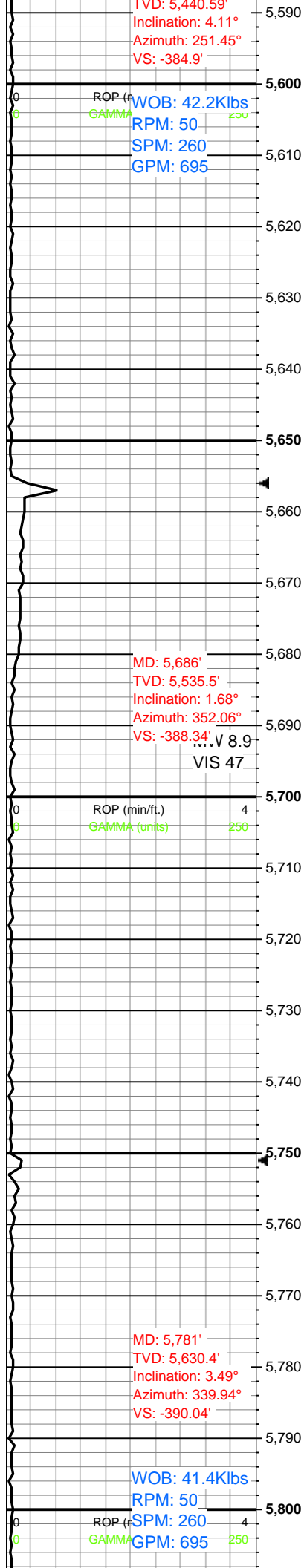
5180-5240 SLTST (50%): predy dk gy-med gy, sl calc, sb blkly, slty-abrsv tex, v arg; SS (35%): pred med gy-lt gy, mod srted v arg cls, w srted, vf-f gr, sb rd-rd grs, mod frm-v frm, gr cls wi pred arg cmt, calc cmt ip, pyr strg ip, mod calc; SH (15%): dk gy, l-mod fis, med frm, v arg, vf pyr, non calc

5240-5300 SLTST (50%): mot dk gy-med gy, frm-sl hrd, sb blkly-plty, tr-v sl calc, slty-abrsv tex; SS (30%): lt gy-offwht, frm, mod w cons, gr sup cls, vf-f gr, mod srt, sb ang-sb rnd grns, sl calc-arg cmt; SH (20%): predy dk gy, frm, blkly, sm-sl slty tex, non calc

5300-5360 SLTST (40%): predy med gy-gyshbn, v arg, occ sdy, pred non calc; SS (35%): predy lt gy-gy, occ offwht, mod w srted, vf-f grs, med frm gr sup cls wi sil-arg cmt, sl slty thru, vf pyr, sil-cal cmt, pred sl calc; SH (25%): predy med gy, frm-v frm, sl brit, sb plty, sm-slty-sdy tex, non calc







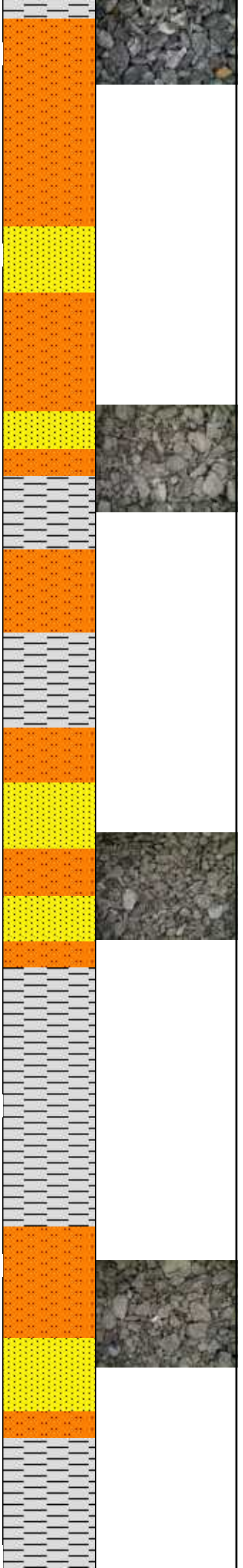
lt gy-offwht, gyshbn, frm, mod w cons, gr sup cls, vf-f gr, mod srt, sb ang-sb rnd grns, sl calc-arg cmt

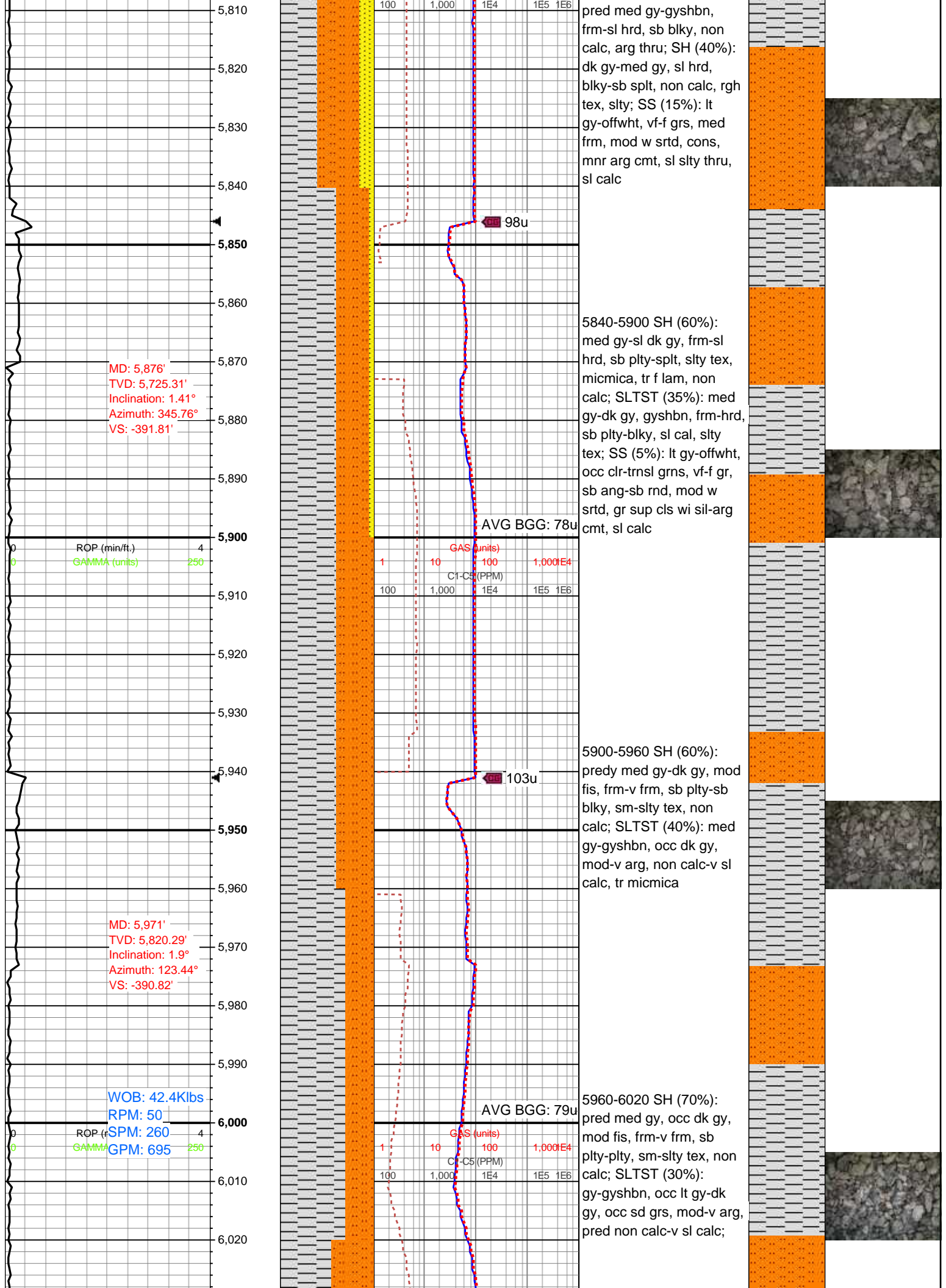
5600-5660 SLTST (50%): dk gy-med gy, v arg, l calc, blk-tab; SS (30%): predy med gy-lt gy, mod srt, v arg cls, w srt, vf-f gr, sb rd-rd grs, mod frm-v frm, gr sup cls wi pred arg cmt, calc cmt ip, mod calc; SH (20%): dk gy, l-mod fis, med frm, v arg, tr mic pyrc spec, non calc

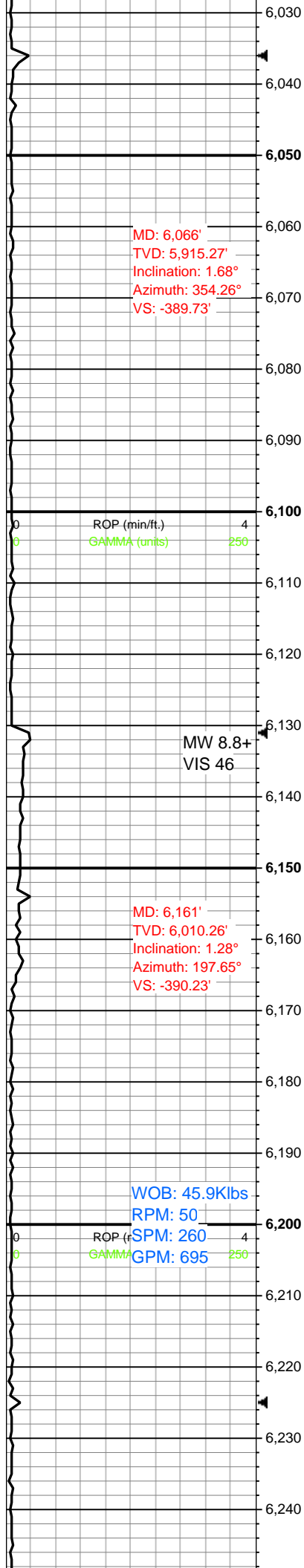
5660-5720 SS (45%): med gy-lt gy, offwht, fri-sl frm, predy gr sup cls wi sil-arg cmt, tr sl cal, occ uncons, pred vf-f sb ang qtz sd grs, slty; SLTST (40%): dk gy-gyshbn, frm-sl hrd, plty-sb blk, non calc, arg thru; SH (15%): dk gy-med gy, sl hrd, sb plty, non calc, rgh tex, slty, hi cly content

5660-5720 SLTST (50%): med gy-gyshbn, frm, plty-sb blk, non calc, arg thru; SS (40%): gyshbn-lt gy, offwht, frm-fri, predy gr sup cls wi sil-arg cmt, tr sl cal, occ uncons, pred vf-f sb ang qtz sd grs, slty; SH (10%): dk gy-med gy, sl hrd, sb plty, non calc, rgh tex, slty, hi-mod cly content

5780-5840 SLTST (45%):





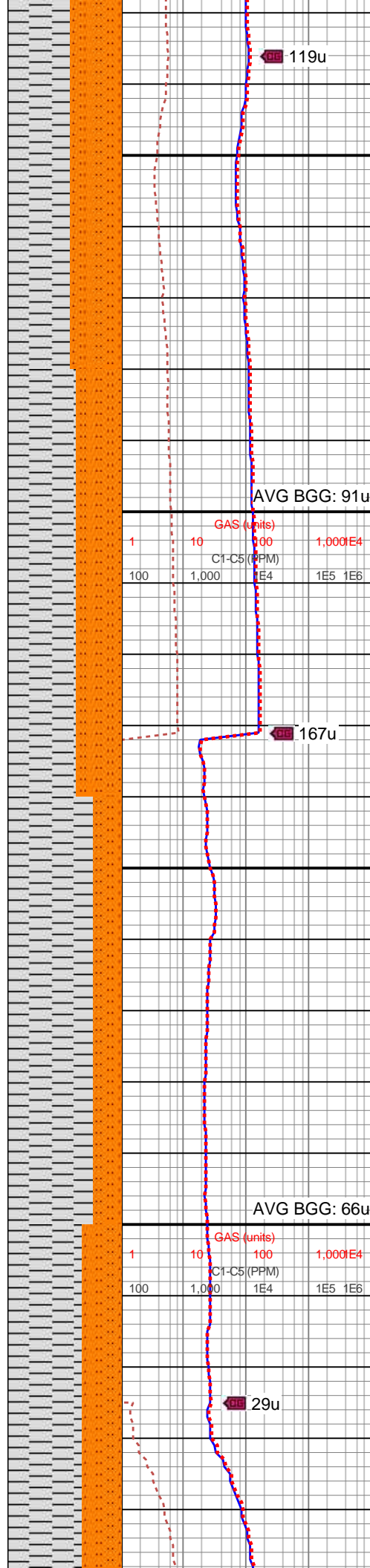


MD: 6,066'
TVD: 5,915.27'
Inclination: 1.68°
Azimuth: 354.26°
VS: -389.73'

MW 8.8+
VIS 46

MD: 6,161'
TVD: 6,010.26'
Inclination: 1.28°
Azimuth: 197.65°
VS: -390.23'

WOB: 45.9Klbs
RPM: 50
SPM: 260
GPM: 695



DB 119u

AVG BGG: 91u

DB 167u

AVG BGG: 66u

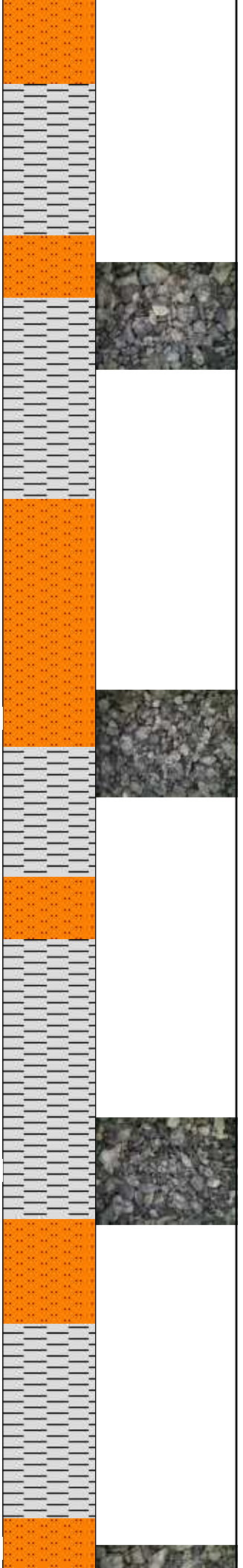
DB 29u

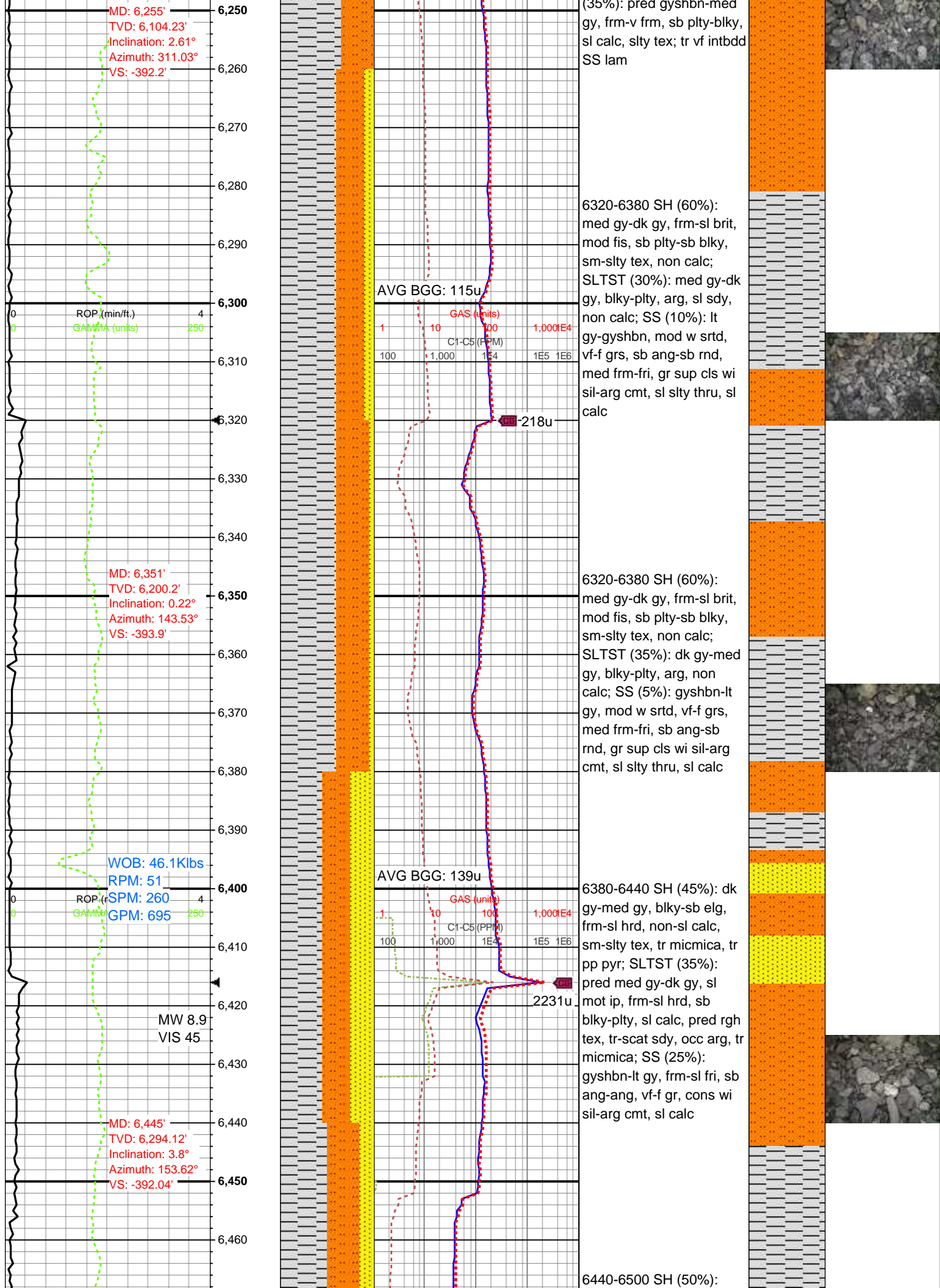
6020-6080 SH (55%): dk gy-med gy, sl hrd, blkyl-sb splt, non calc, rgh tex, slty; SLTST (45%): pred med gy-gyshbn, frm-sl hrd, sb blkyl, non calc, arg thru; tr vf intbdd SS

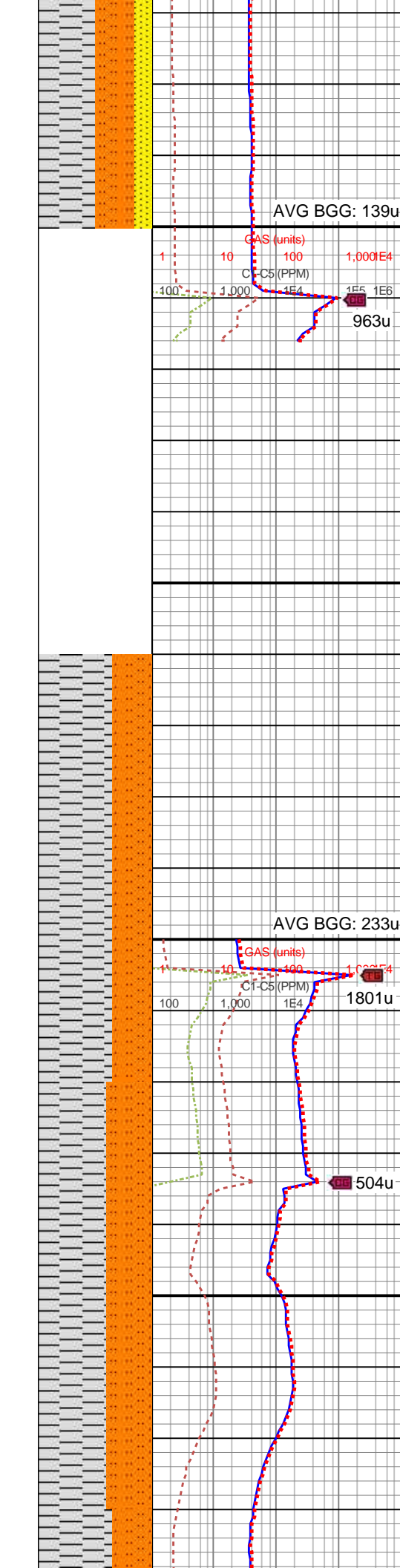
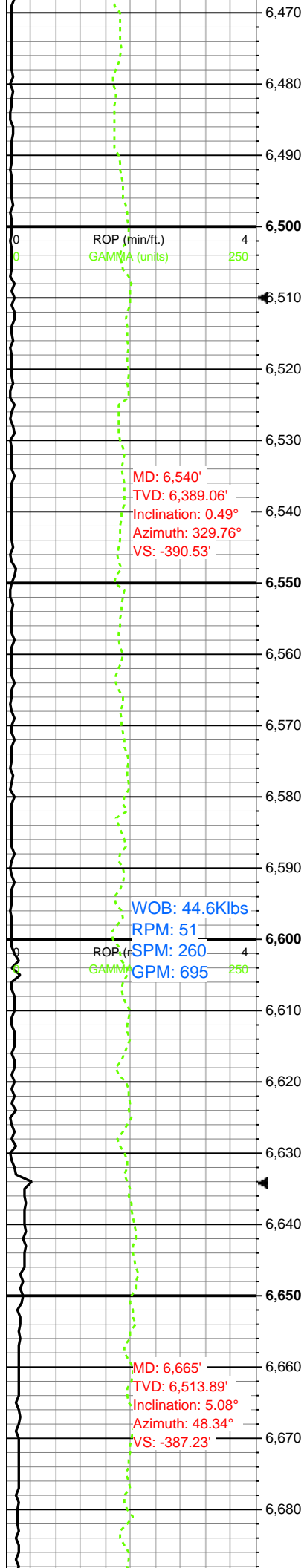
6080-6140 SH (60%): med gy-sl dk gy, frm, sb plty-plty, slty tex, micmica, tr f lamn, non calc; SLTST (40%): pred gyshbn-med gy, frm-v frm, sb plty-blky, sl calc, slty tex

6140-6200 SH (75%): pred med gy, occ dk gy, mod fis, frm-v frm, sb plty-plty, sm-slty tex, non calc; SLTST (25%): gy-gyshbn, occ lt gy-dk gy, occ sd grs, mod-v arg, pred non calc-v sl calc; tr vf, sb ang intbdd SS

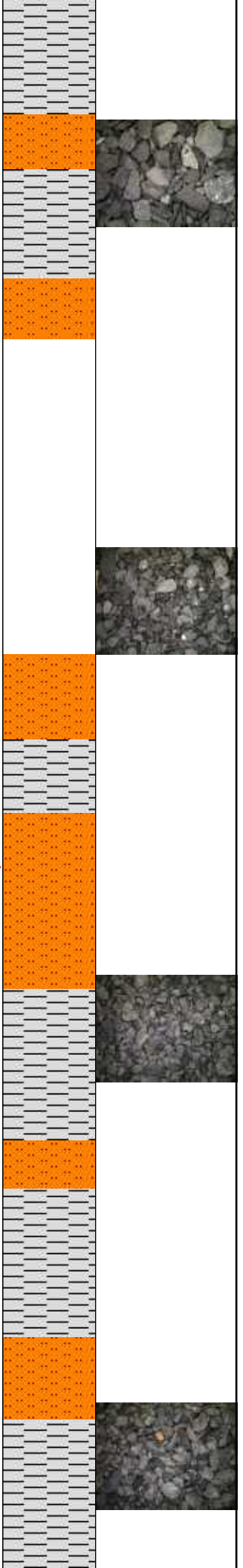
6200-6260 SH (65%): med gy-sl dk gy, frm, sb plty-plty, slty tex, micmica, tr f lamn, non calc; SLTST (25%): pred med gy-gyshbn, frm-sl hrd, sb blkyl, non calc, arg thru; tr vf intbdd SS







mot dk gy-med gy, frm-v
frm, sb tab-plty, sm-slt
tex, sl-non calc; SLTST
(35%): med gy-gyshbn, v
arg, non calc, slty tex,
mnr ss lamn; SS (15%):
pred lt gy-lt gyshbn, mod
w srted, med frm, vf f grs,
gr sup cls wi sil-arg cmt,
sl-mod calc



MD: 6,540'
TVD: 6,389.06'
Inclination: 0.49°
Azimuth: 329.76°
VS: -390.53'

WOB: 44.6Klbs
RPM: 51
SPM: 260
GPM: 695

MD: 6,665'
TVD: 6,513.89'
Inclination: 5.08°
Azimuth: 48.34°
VS: -387.23'

Note: Sample not
circulated up before trip

Note: TOOH for Agitator

6560-6620 SH (65%): dk
gy-v dk gy, plty-sb blkly,
frm-sl hrd, non-sl calc,
sm-sl rgh tex, tr micmica;
SLTST (35%): pred med
gy-sl dk gy, lt gy, frm-sl
hrd, sb blkly-plty, sl calc,
predy rgh tex, occ arg, tr
micmica

6620-6680 SH (60%):
predy dk gy-med gy, dk
gyshbn, frm-sl hrd, sb
plty-tab, abrsv tex, tr f
lamn, micmica, non calc;
SLTST (40%): med gy-dk
gy, frm-v frm, sb tab-blky,
plty, sl calc, slty tex

