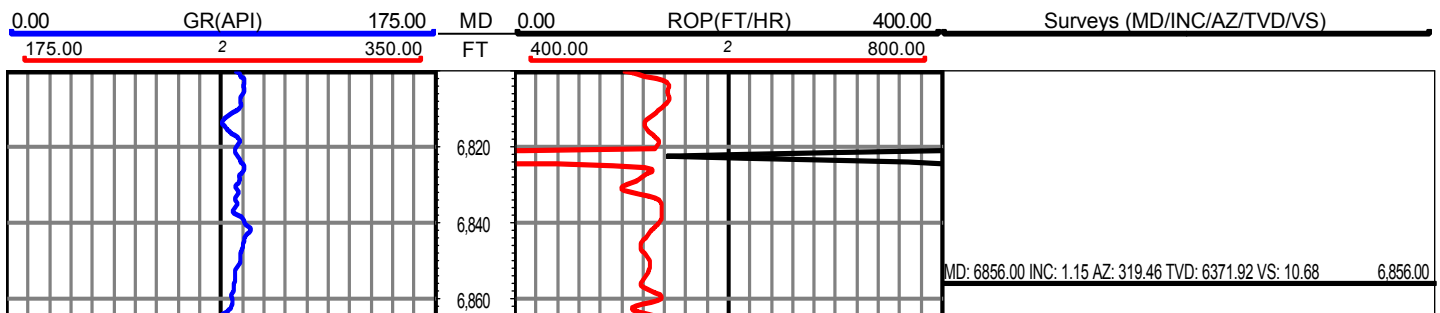
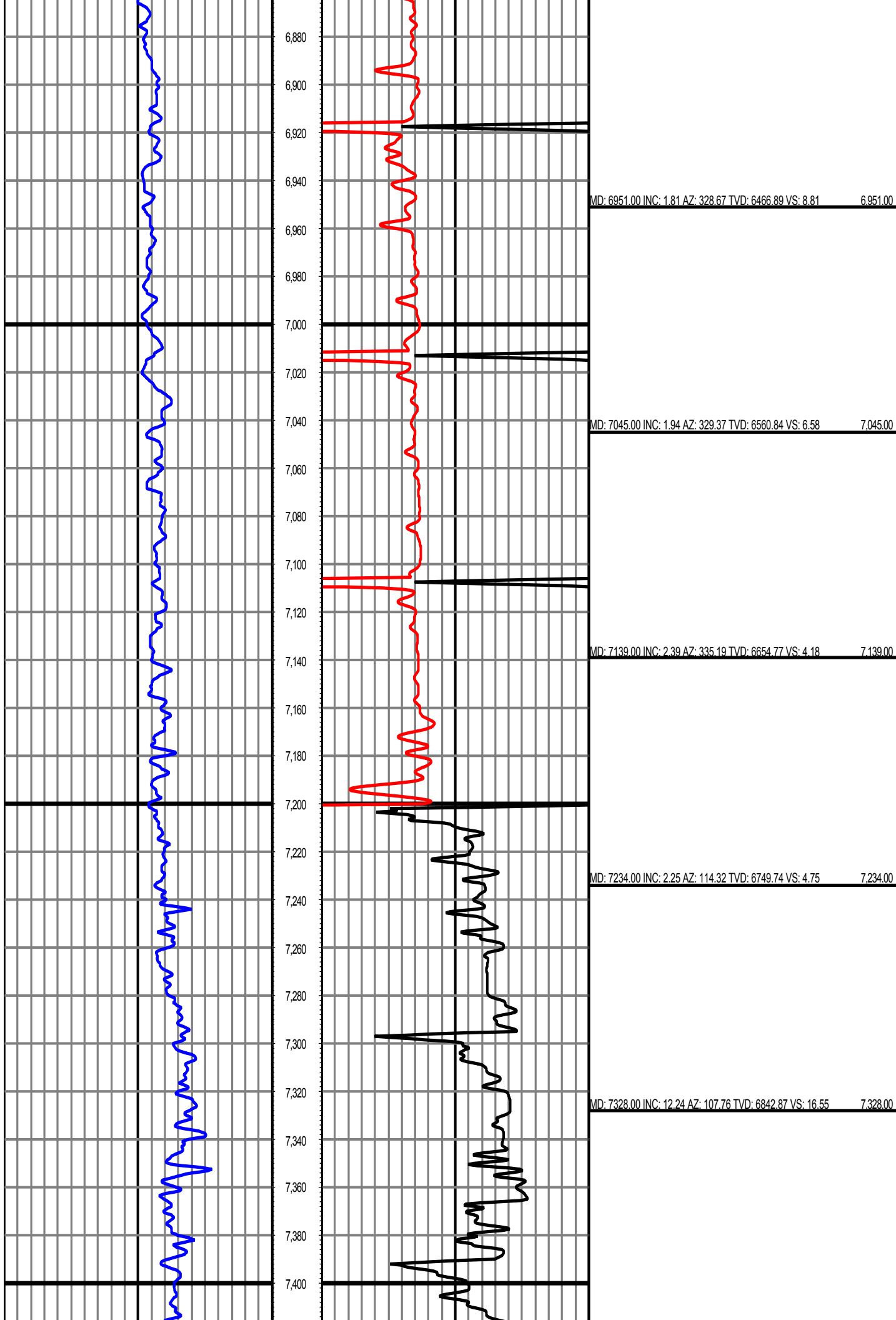


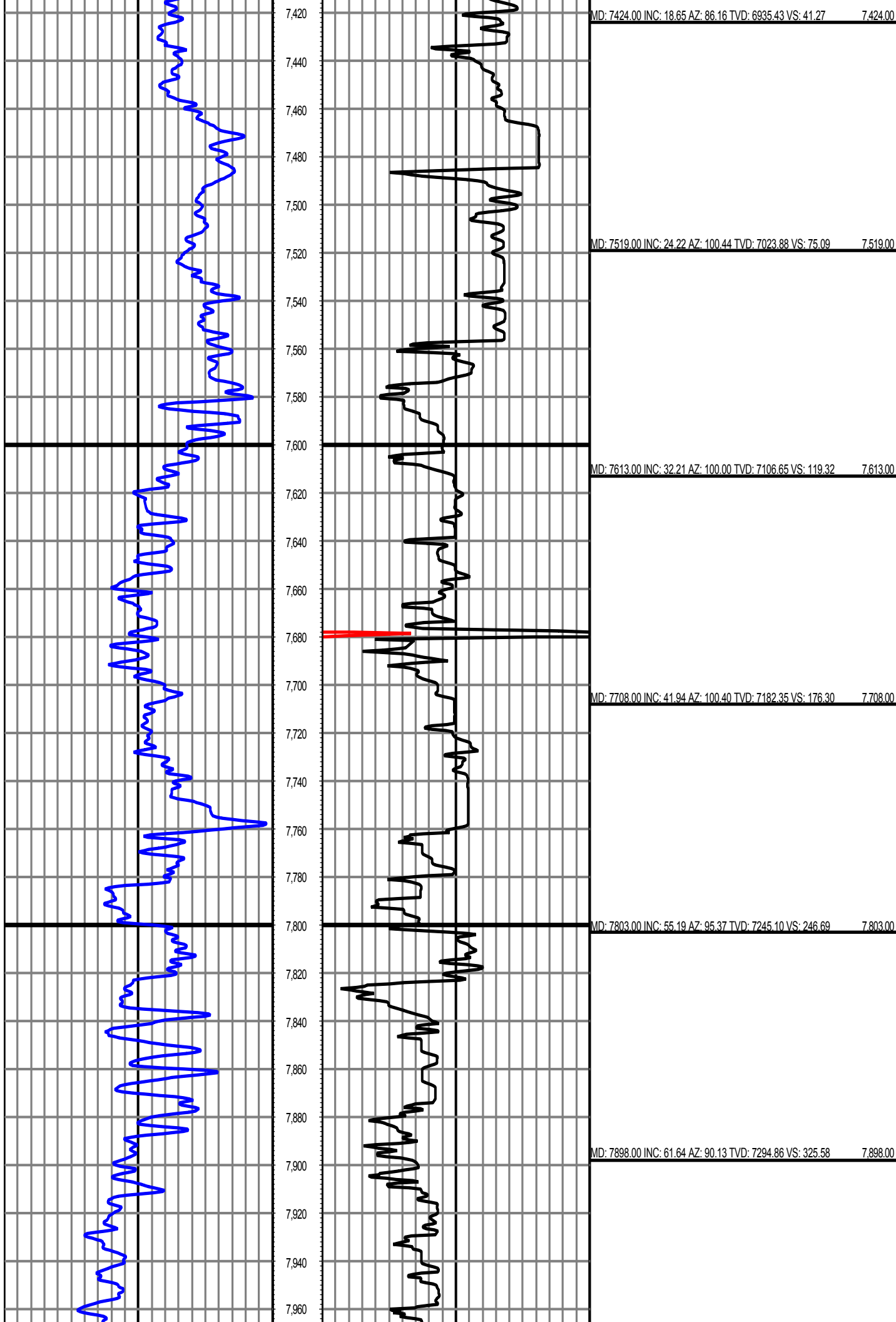
**MS Energy Services**123 W Oregon Ln
Glendive MT, 59330**Fairview #3****Scale 2":100' - MD****1/26/2016 7:00 PM****Oper. Company:** Extraction Oil & Gas**State:** Colorado**Well:** Fairview #3**County:** Weld**Field:** DJ Basin**Country:** USA**Rig:** Savanna #802**Location:** Longmont, CO**Well ID:** 05-123-41522**Start Date:** 01/24/2016 16:00:00**Job Number:** DDMT-160027**End Date:** 01/27/2016 01:00:00**Latitude:** 40° 9' 56.7324" N
Longitude: 105° 2' 5.5212" W**Elev KB:** 4,963'**Elev DF:** 4,963'**Elev GL:** 4,948'**Operator 1:** Brian McElyea**Operator 2:** Brent Boyd

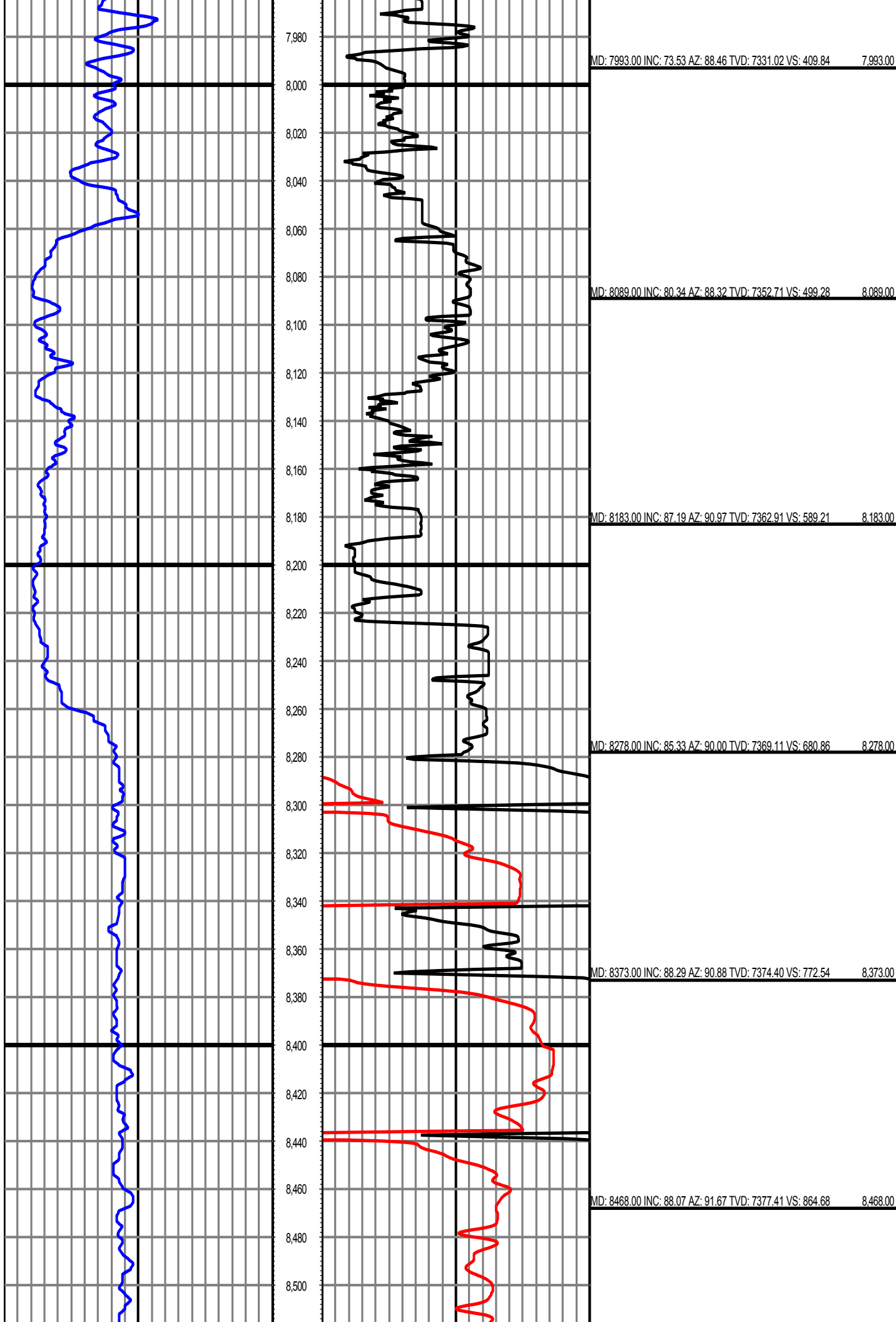
Tool Run Data	Run #1	Run #2	Run #3	Run #4	Run #5
Tool S/N	0106	0106	0106		
Bit Size	7 7/8	7 7/8	7 7/8		
Cal Factor	9.160	9.160	9.160		
Survey Offset:	64.00	71.00	64.00		
Gamma Offset	51.00	58.00	51.00		
Resistivity Offset	0.00	0.00	0.00		
Start Depth	4899.00	7673.00	8222.00		
StartDate	1/24/2016	1/25/2016	1/25/2016		
StartTime	08:00	00:00	13:00		
EndDepth	7673.00	8222.00	15082.00		
EndDate	1/24/2016	1/25/2016	1/27/2016		
EndTime	23:00	13:00	01:00		
Mud Type	Invert	Invert	Invert		
Mud Weight	8.80	8.80	9.05		
Funnel Viscosity	48	48	47		
Plastic Viscosity	14	14	12		
Yield Point	6	6	7		
Gel Strength	15 @ 10min	15 @ 10min	13 @ 10min		
Solids Content	3.2	3.2	3.4		
Chlorides	35,000 mg/L	35,000 mg/L	30,000 mg/L		
Temperature	190.9	193.3	265.0		
Hole Data			Casing Data		
Size	From	To	Size	From	To
13 1/2	0.00	1552.00	9 5/8	0.00	1552.00
7 7/8	1552.00	15082.00			

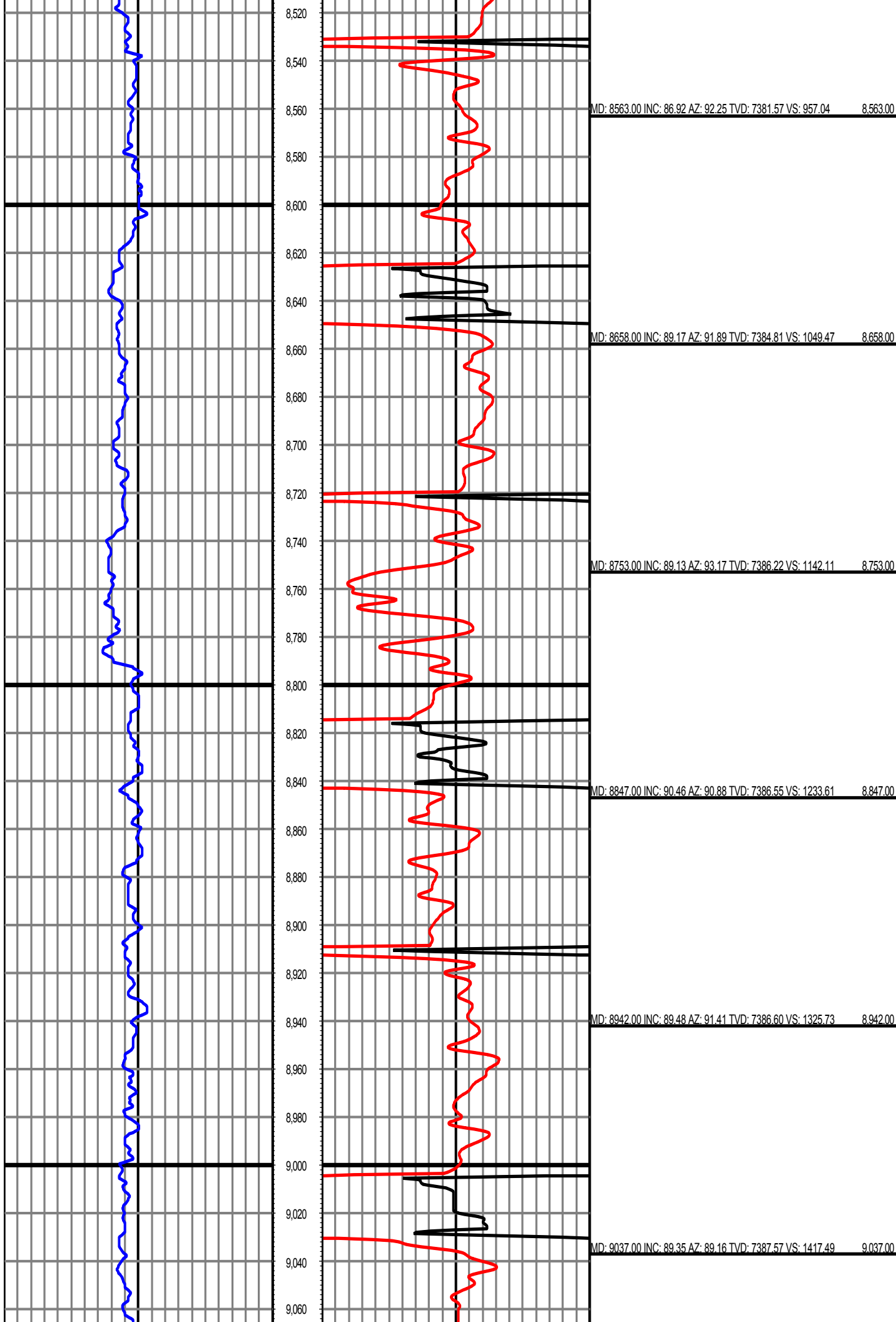
All interpretations are opinions based on inferences from electrical or other measurements and we cannot and do not guarantee the accuracy or correctness of any interpretation, and we shall not except in the case of gross or willful negligence on our part, be liable or responsible for any loss, cost damages or expenses incurred or sustained by anyone resulting from an interpretation made by any of our officers, agents, or employees.

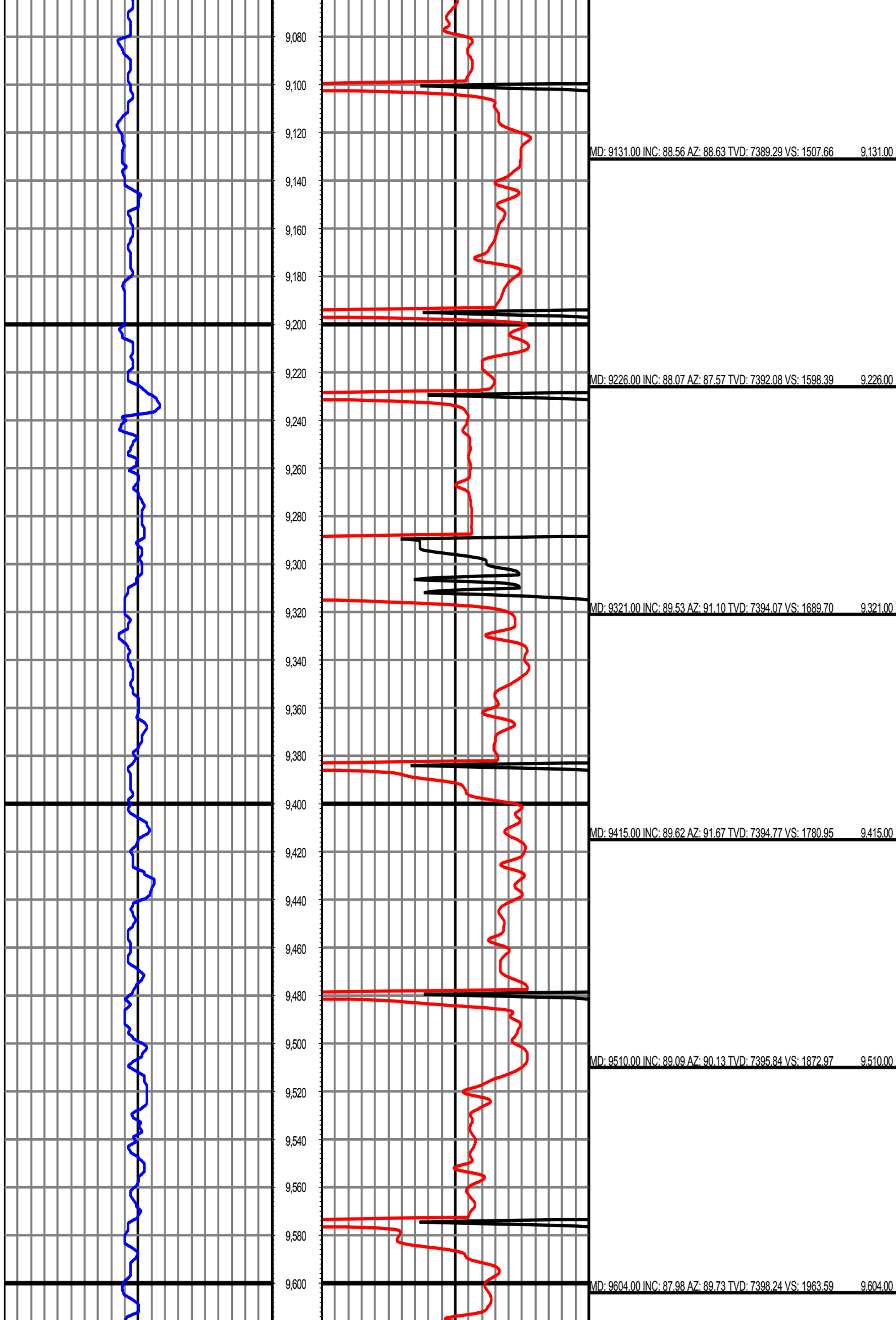


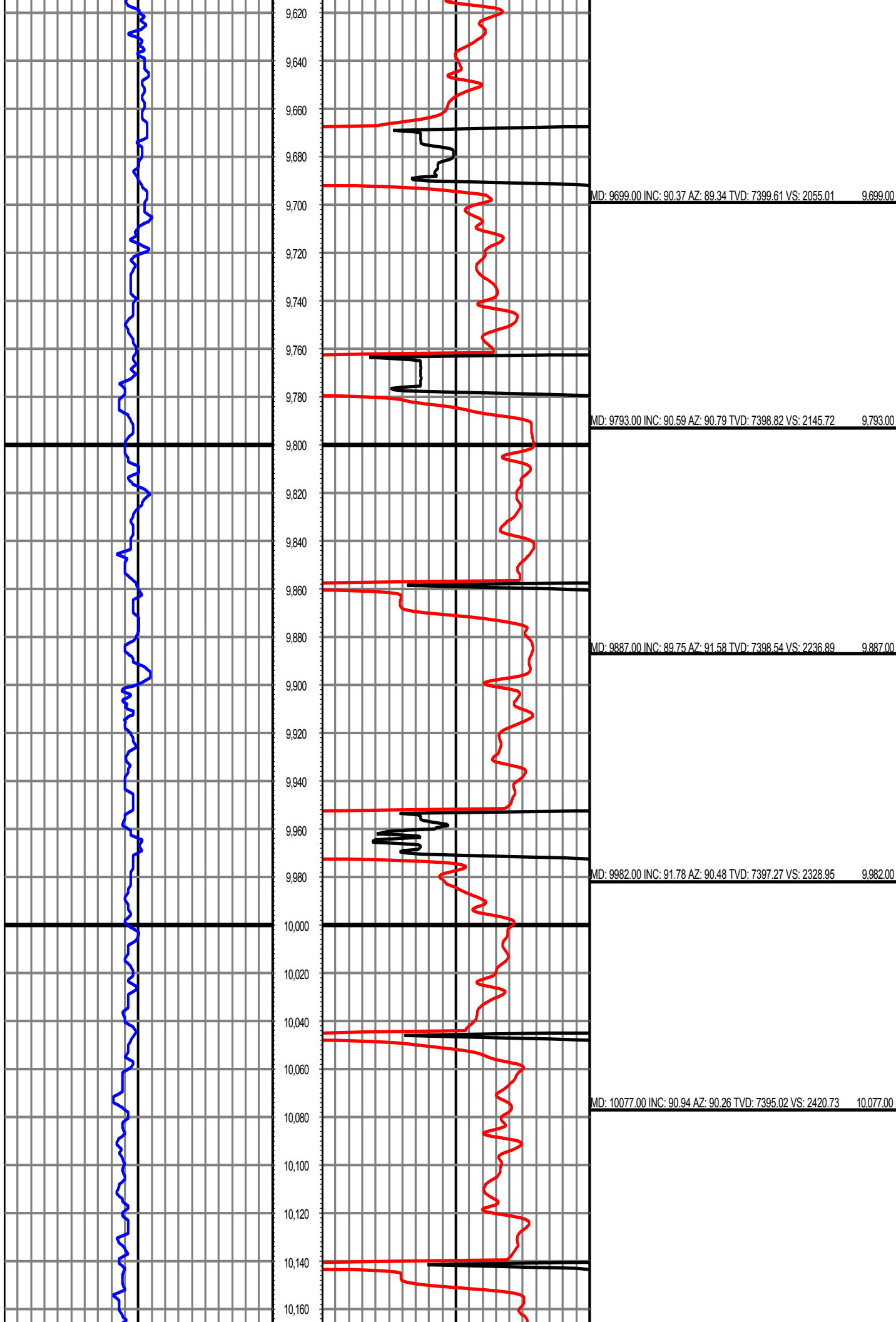


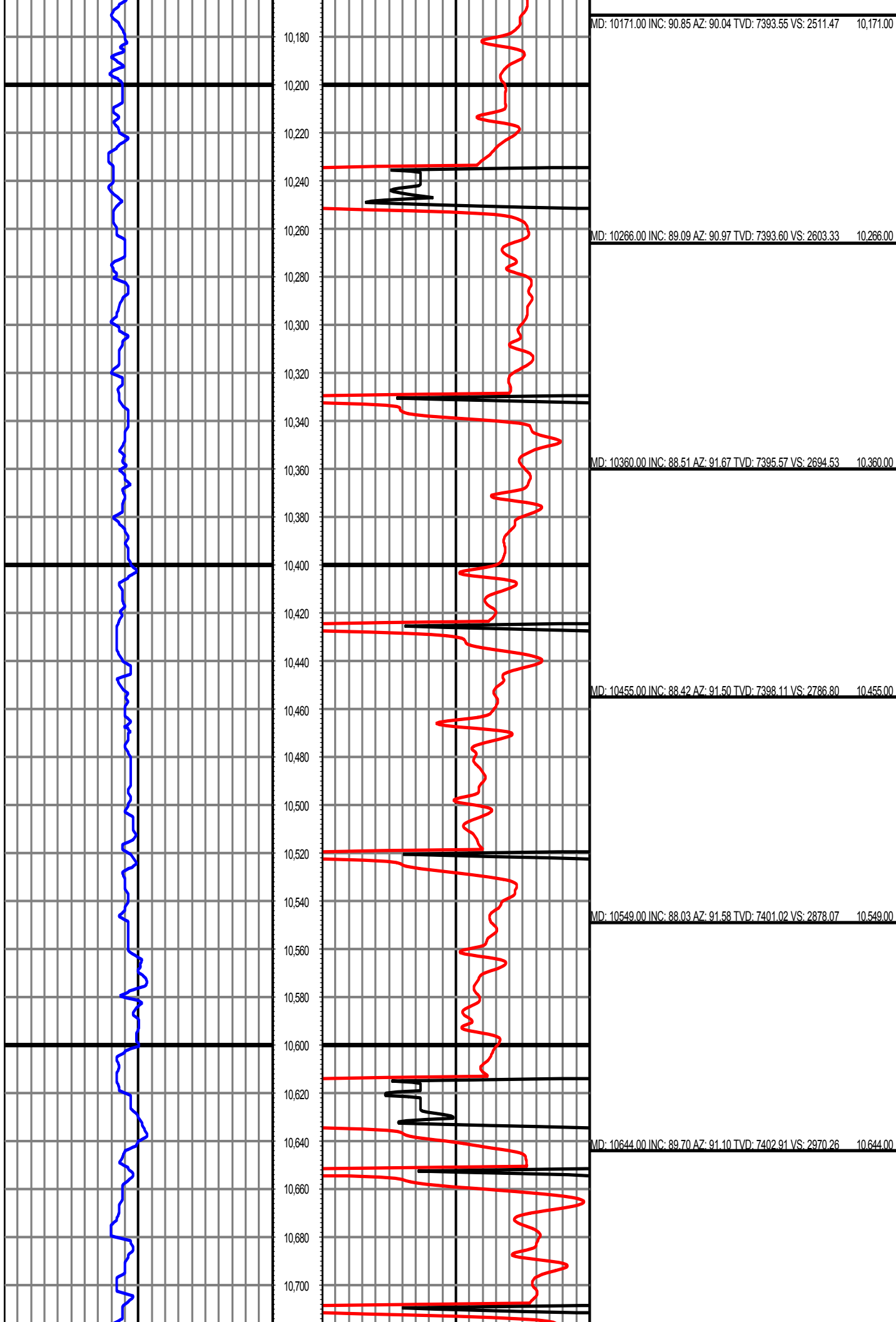


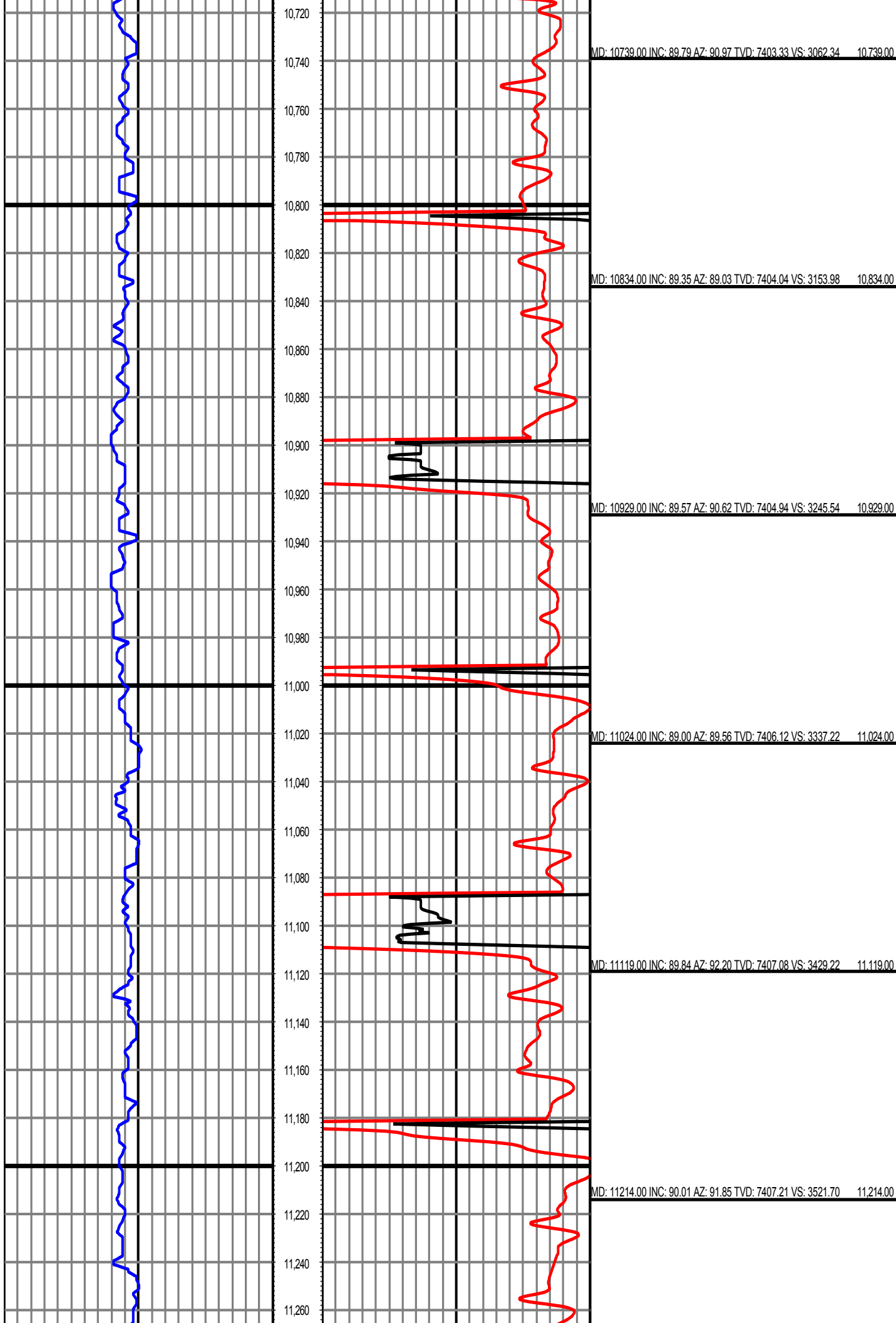


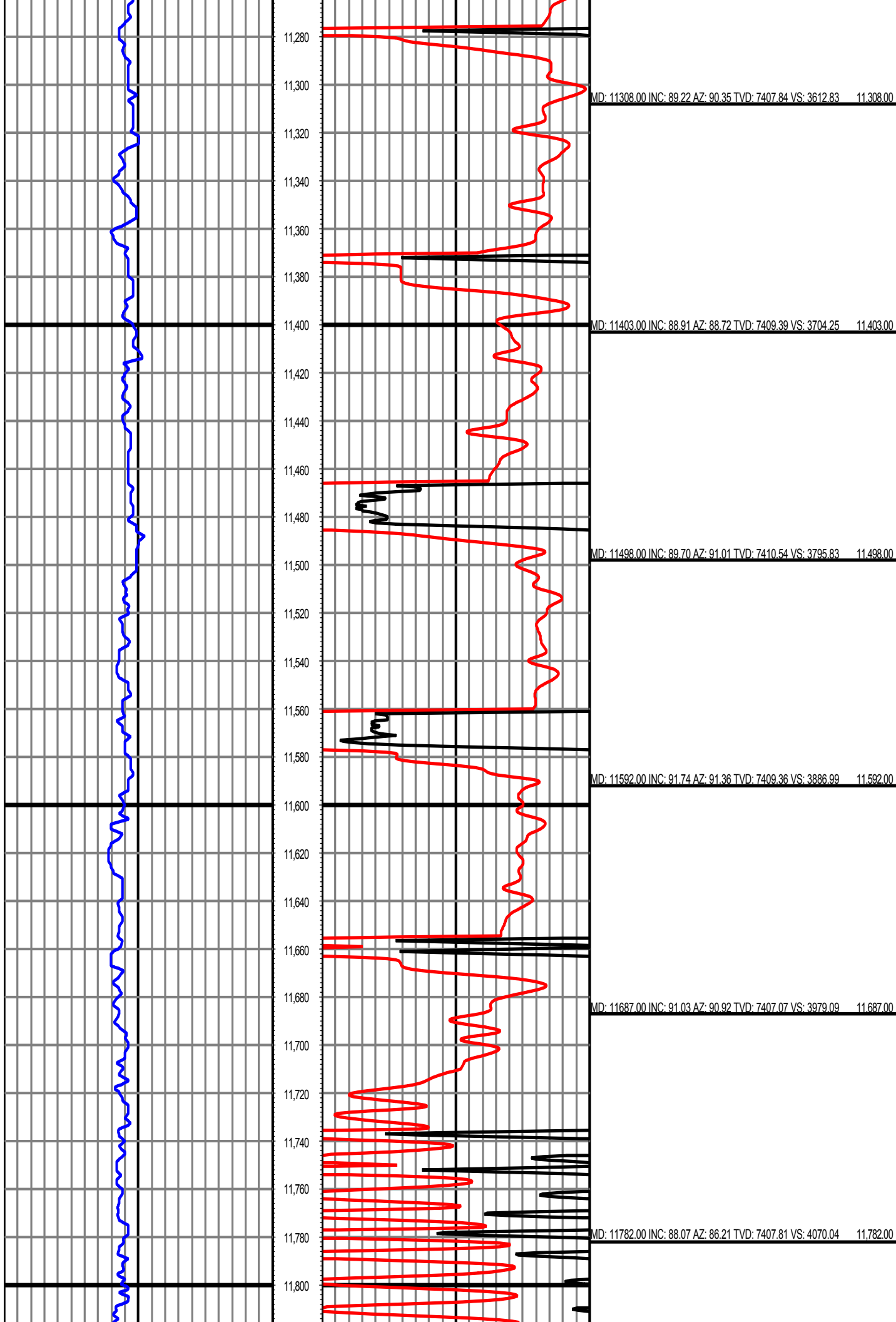


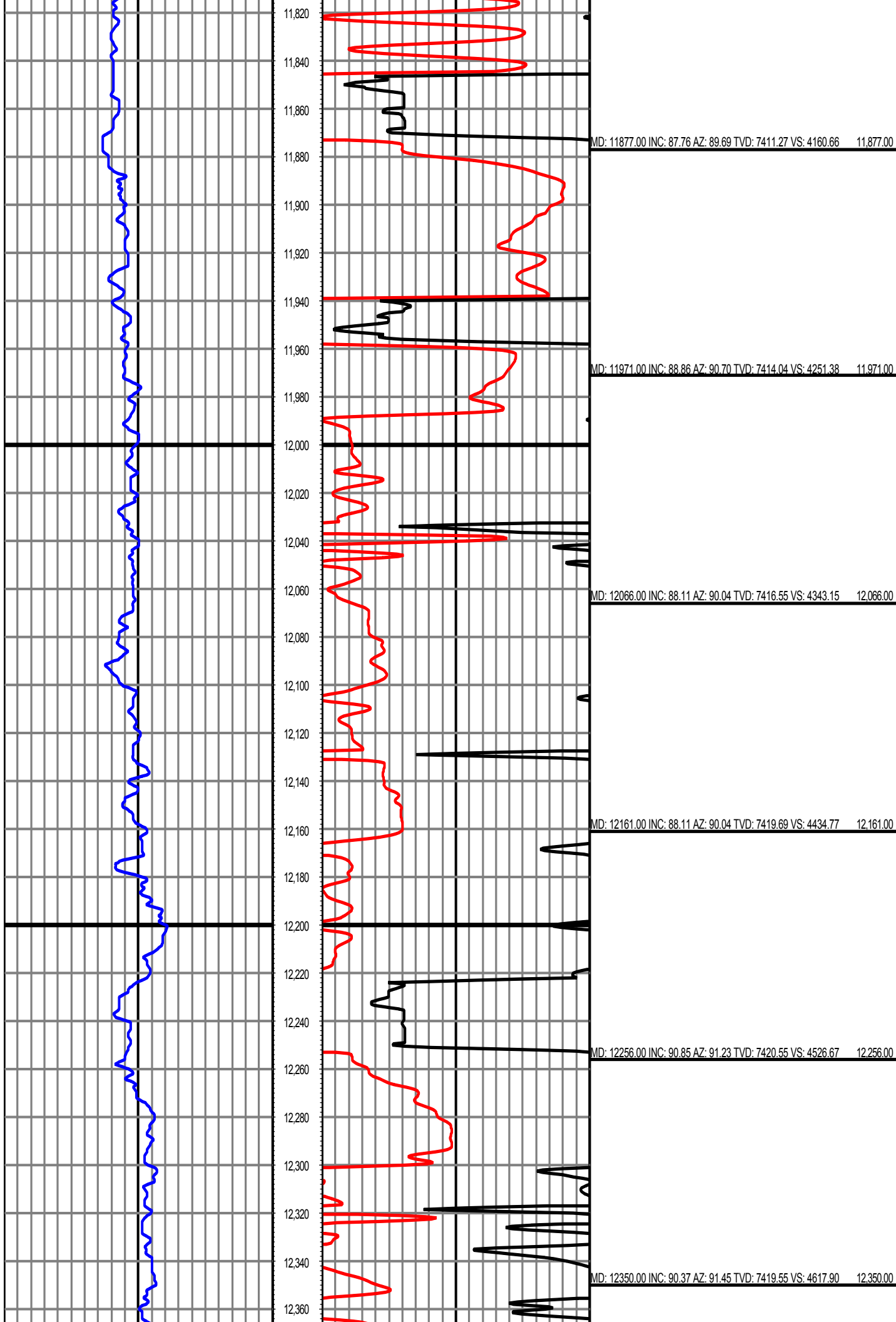


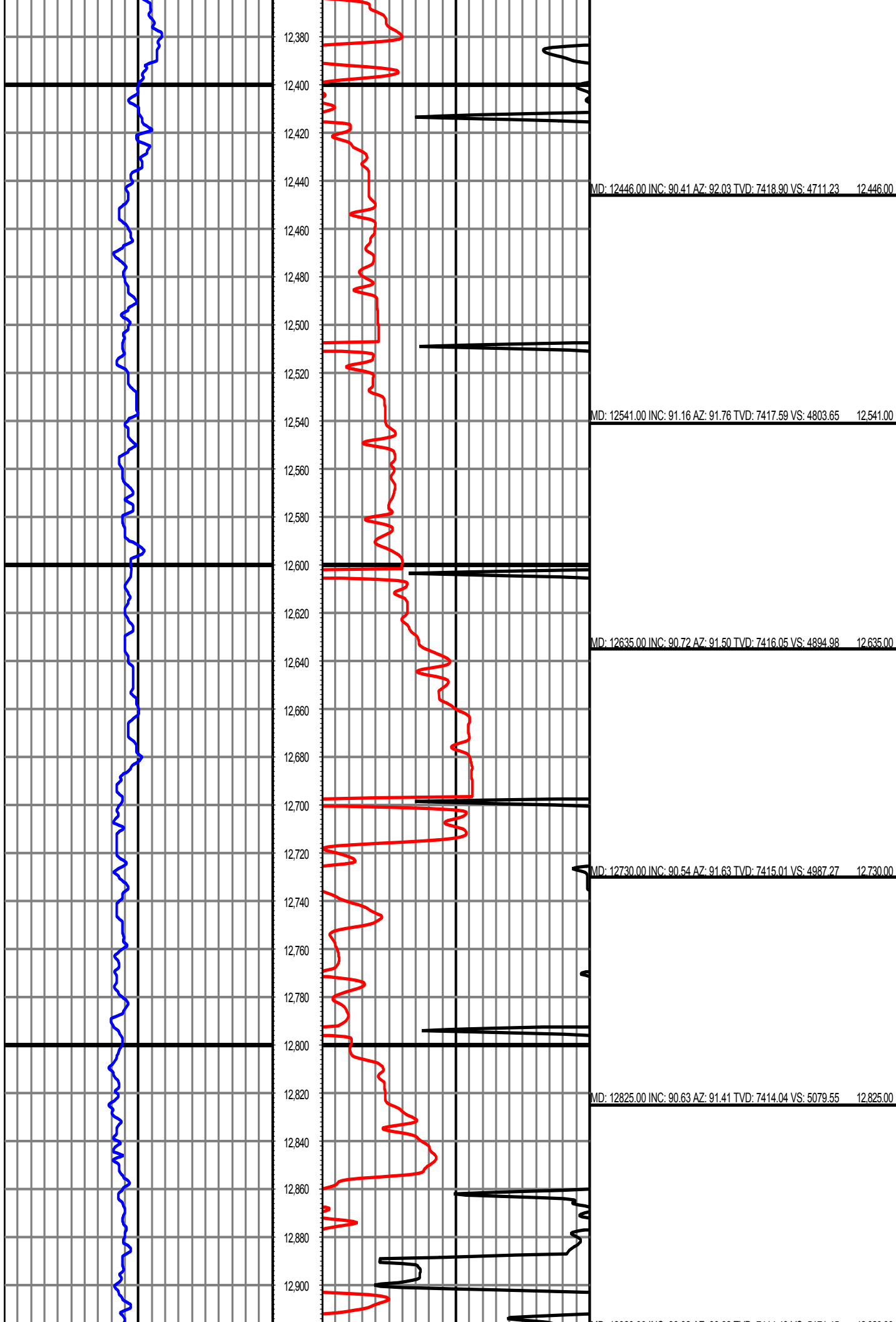


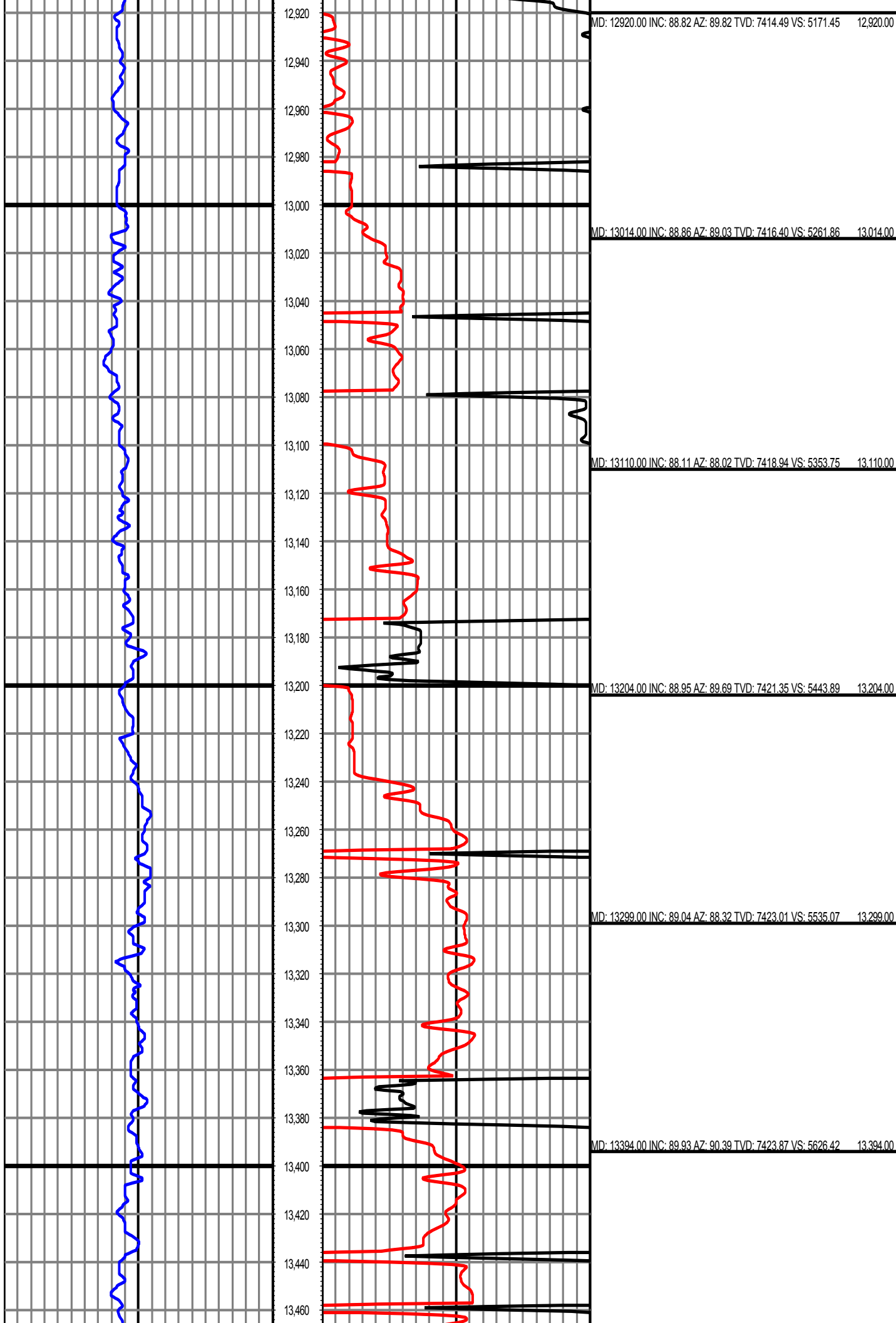


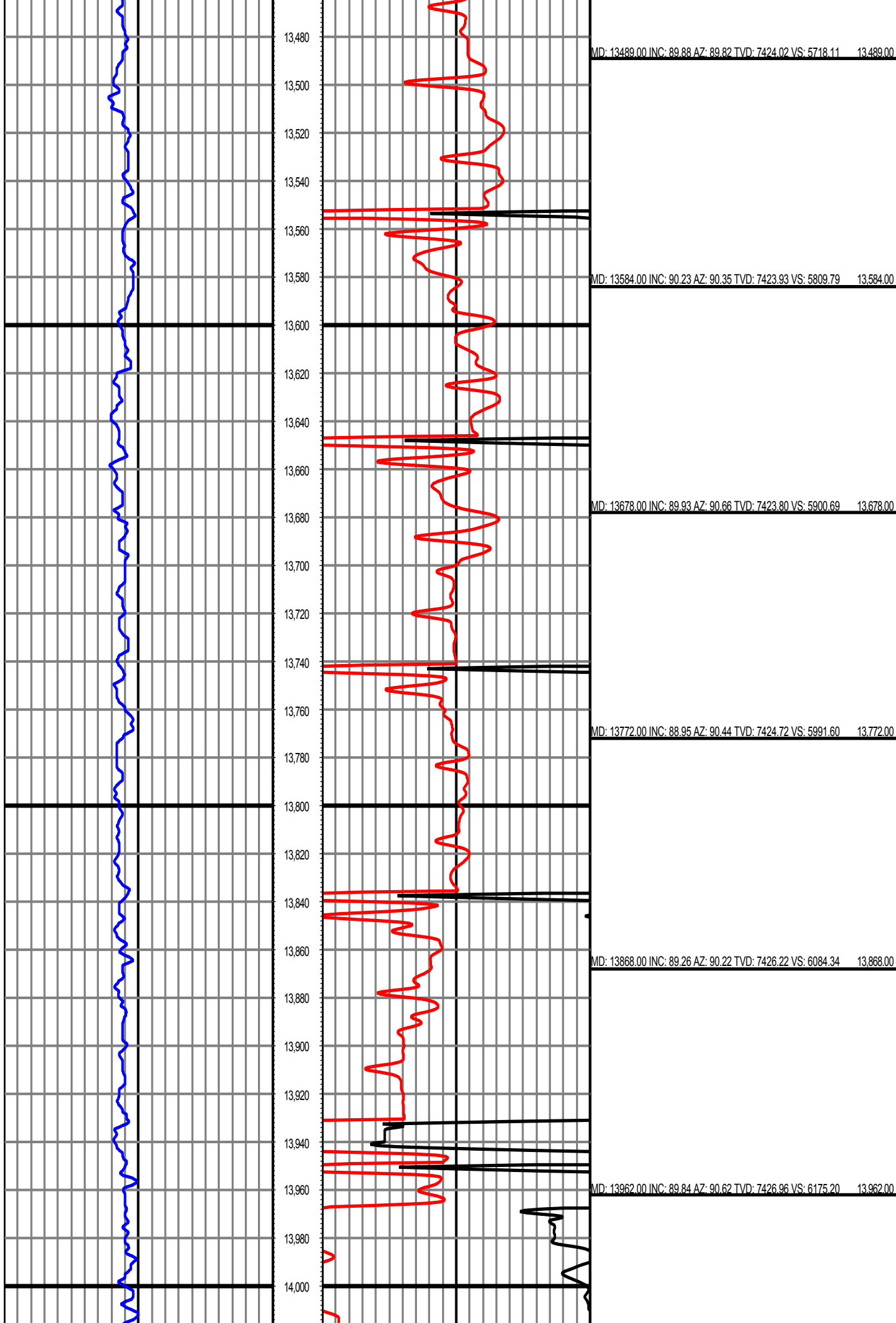


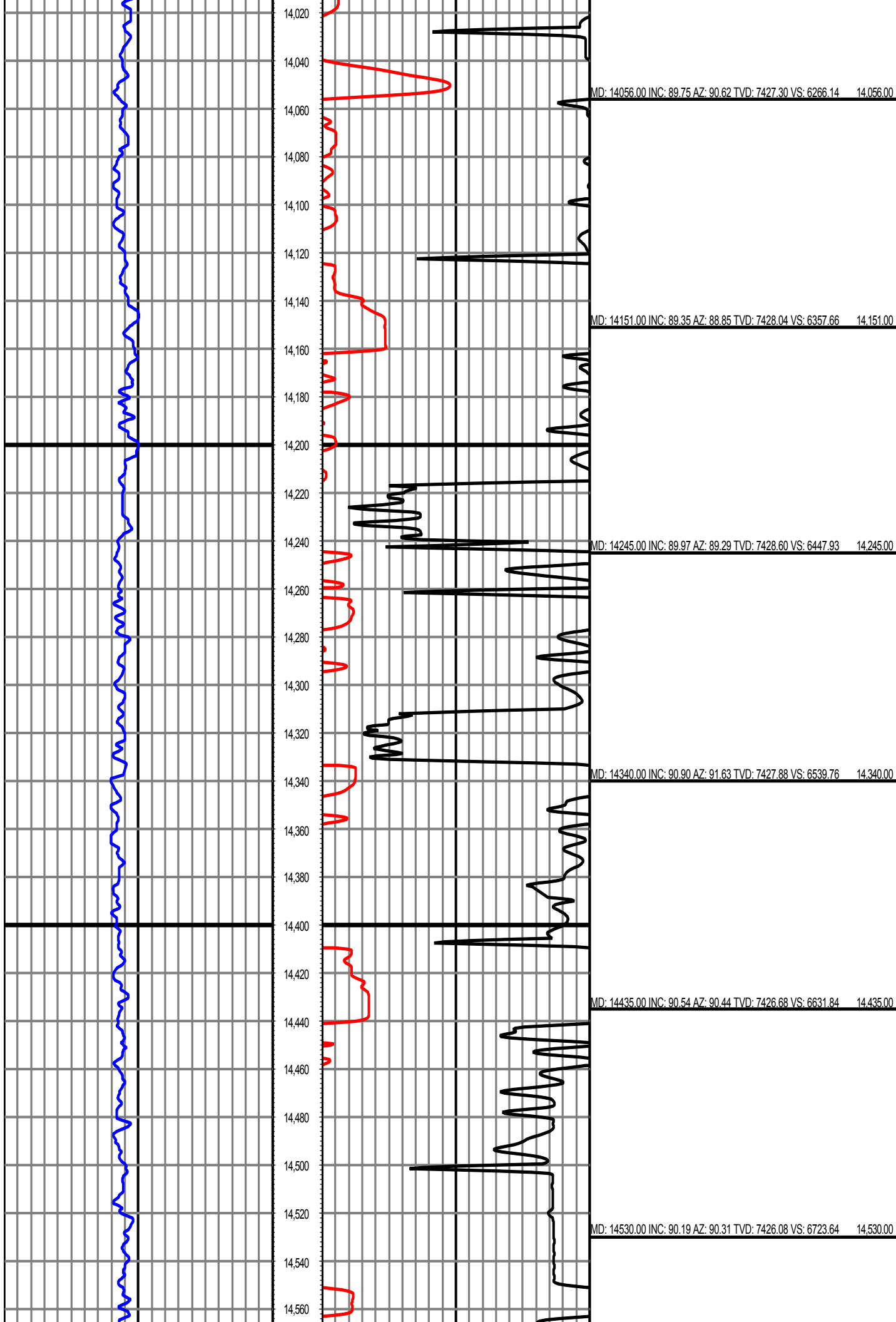


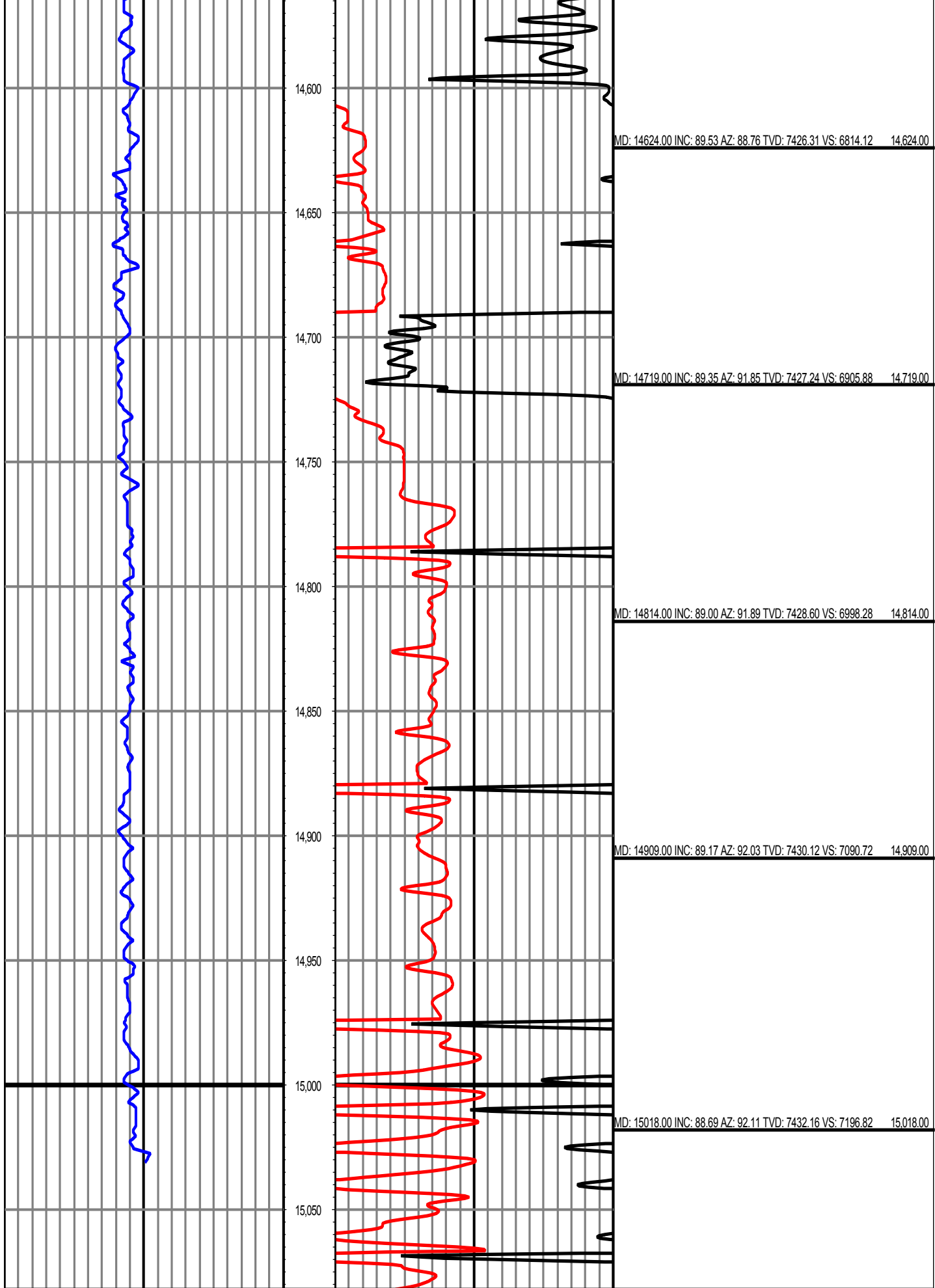












0.00 GR(API) 175.00 MD 0.00 ROP(FT/HR) 400.00 Surveys (MD/INC/AZ/TVD/VS)

175.00 2 350.00 FT 400.00 2 800.00