



Scale: 5" / 100'
Measured Depth Log

Well Name Fairview 3 - Vertical

Location Sec 5, T2N, R68W

State CO

County Weld

Country USA

Rig Number Savanna 802

API Number 05-123-41522

Field Wattenberg

Geographic Region DJ Basin

Drilling Completed 1/26/2016

Spud Date 12/6/2015

Surface Coordinates Lat: 40° 9' 56.7324" N
Long: 105° 2' 5.5212" W

Bottom Hole Coordinates Lat: 40° 9' 37.9147" N
Long: 105° 0' 35.2567" W

Ground Elevation 4,948'

K.B. Elevation 4,963'

Logged Interval 5,000' **To** 7,300' MD

Total Depth 15,082' MD

Formation Codell

Type of Drilling Fluid Invert

Operator

Company Extraction Oil & Gas

Address 1888 Sherman St., Suite 200
Denver, CO 80203









Geologist

Name Jared Rouse

Company Extraction Oil & Gas

Address 1888 Sherman St., Suite 200
Denver, CO 80203

Zone Color Coding

 Oil	 Condensate	 Gas
 Note	 Core	 Pressure
 Error	 Water	 Seal



Other

Equipment ML-197

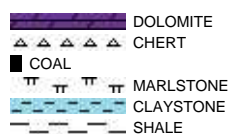
Comments Start: 1-24-16
End: 1-26-16

Logger Names Mark Gross / Henry Printz

Services Provided 2-Man Logging

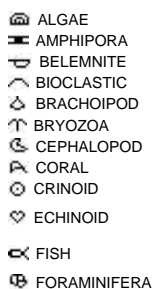
Address Empirica, LLC.
6360 W Sam Houston Pkwy N
Suite 100
Houston, TX 77041

Rock Types



Accessories

Fossils



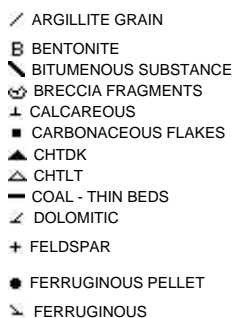
F



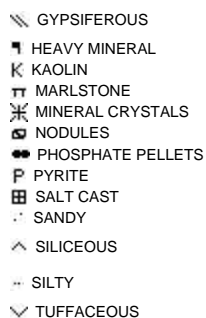
Minerals



ARGILLACEOUS



GLAUCONITE

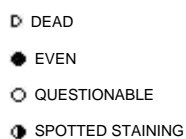


Stringer

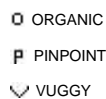


Other Symbols

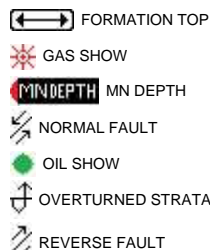
Oil Show



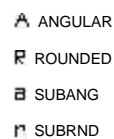
Porosity



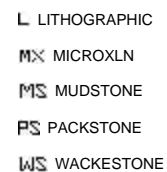
Engineering



Rounding



Textures



Sorting

PROPERTY

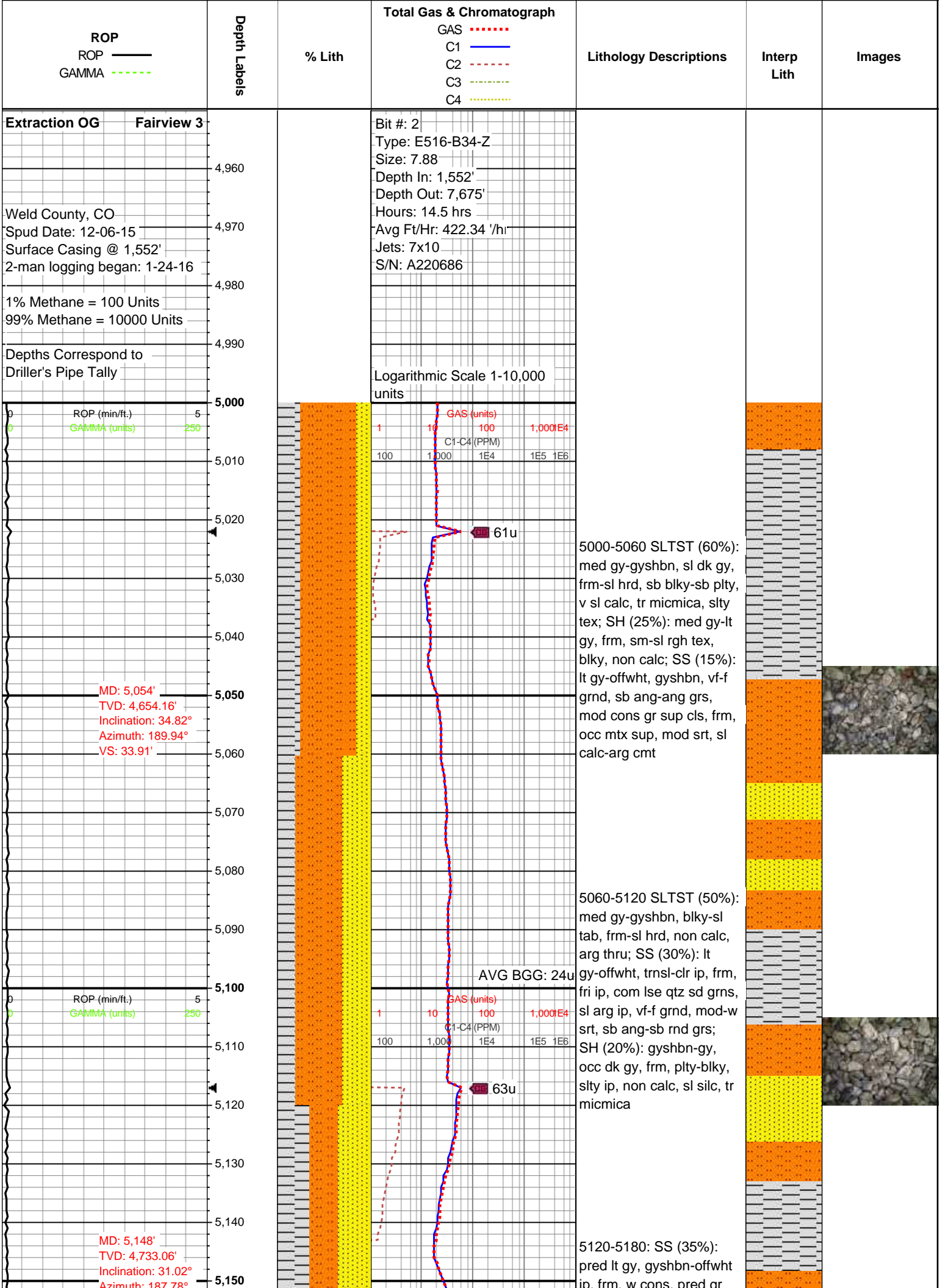
- E EARTHY
- ▣ FENESTRAL
- F FRACTURE
- × INTERCRYSTALLINE
- ⊕ INTEROOLITIC
- ⚡ MOLDIC

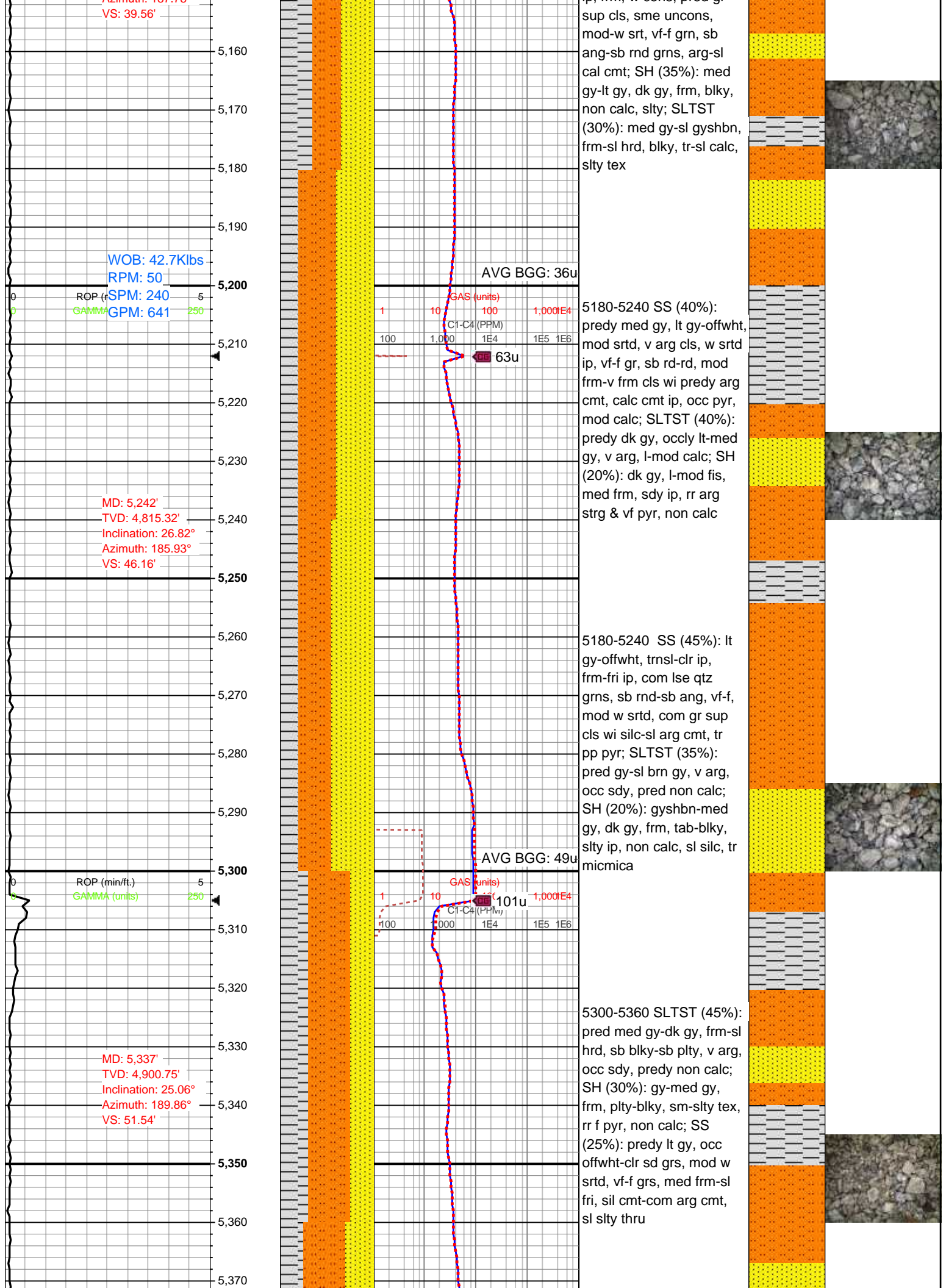
- ◀ CONNECTION (LEFT)
- ▶ CONNECTION (RIGHT)
- ⬅ CONNECTION GAS
- ⬇ CORE - LOST
- CORE - RECOVERED
- ⋮ DST INTERVAL
- ⚡ FAULT

- ◀ SIDEWALL CORE (LEFT)
- ▶ SIDEWALL CORE (RIGHT)
- ▨ SLIDE
- DS SURVEY
- ⬅ TRIP GAS
- ◀ WIRELINE TESTED - LEFT
- ▶ WIRELINE TESTED - RT

- BS BOUNDSTONE
- C CHALKY
- CX CRYPTOXLN
- E EARTHY
- F× FINELYXLN
- GS GRAINSTONE

- M MODERATE
- P POOR
- W WELL





Azimuth: 187.78°
VS: 39.56'

WOB: 42.7Klbs
RPM: 50
SPM: 240
GPM: 641

MD: 5,242'
TVD: 4,815.32'
Inclination: 26.82°
Azimuth: 185.93°
VS: 46.16'

MD: 5,337'
TVD: 4,900.75'
Inclination: 25.06°
Azimuth: 189.86°
VS: 51.54'

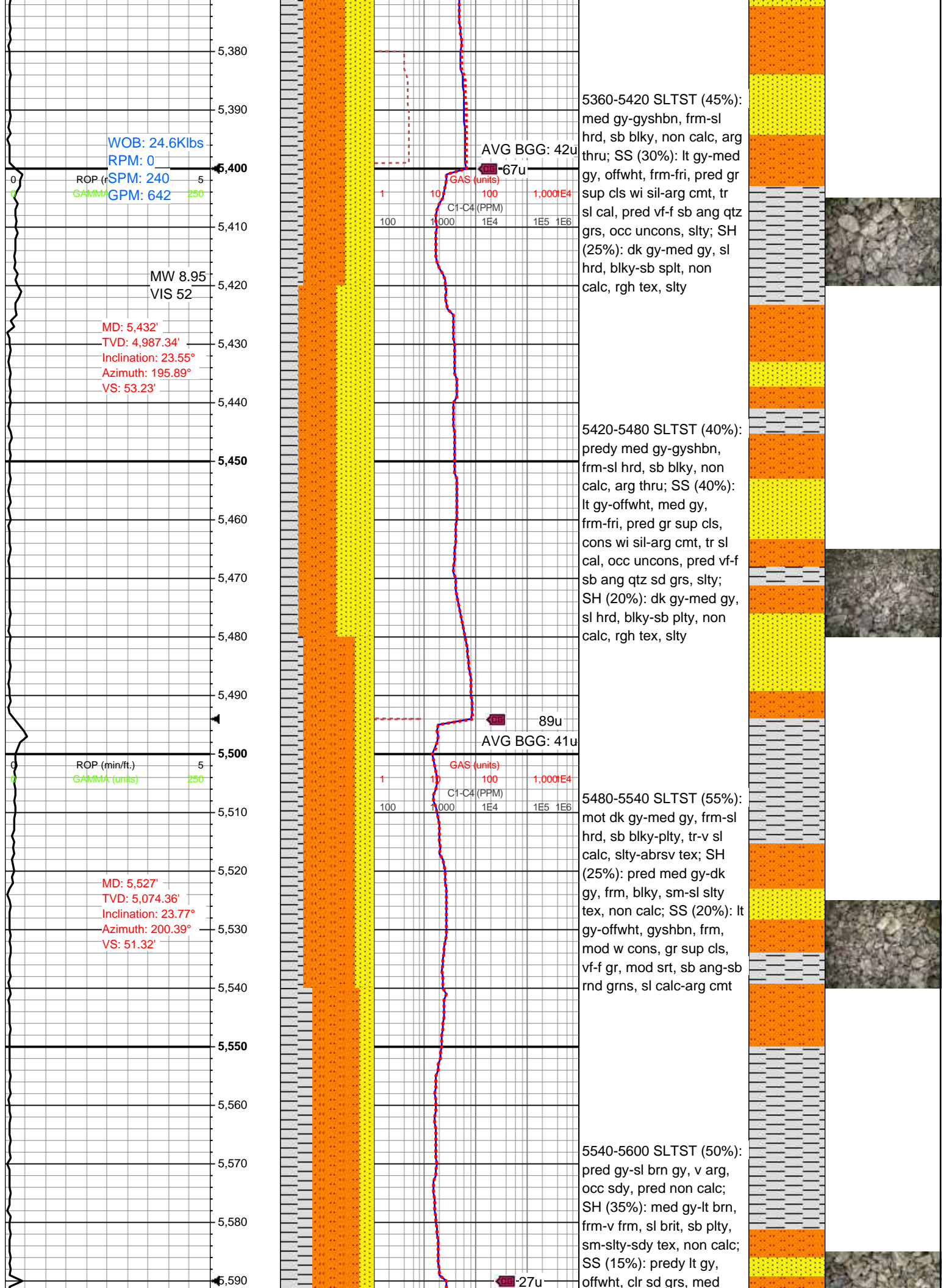
AVG BGG: 36u

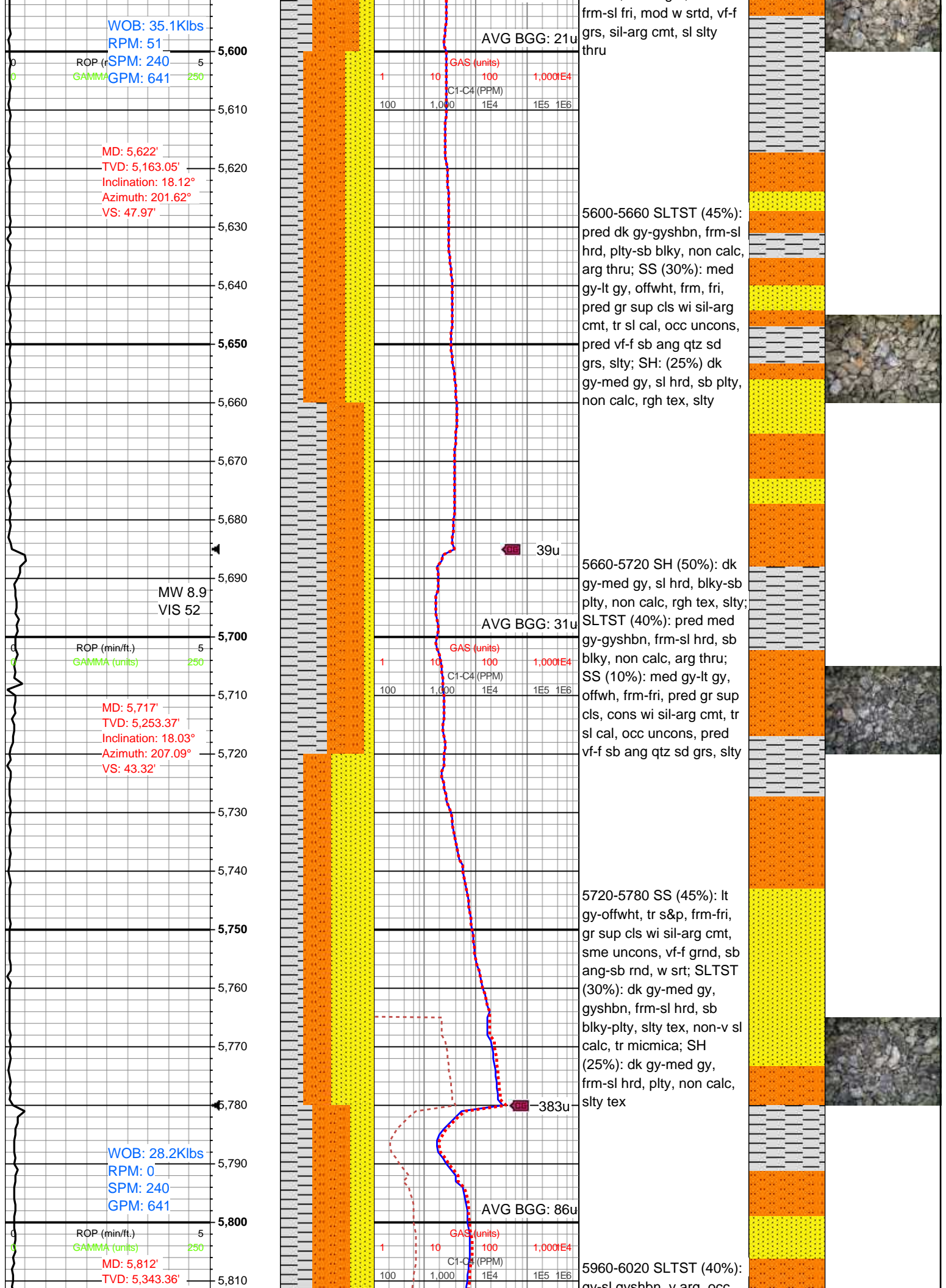
AVG BGG: 49u

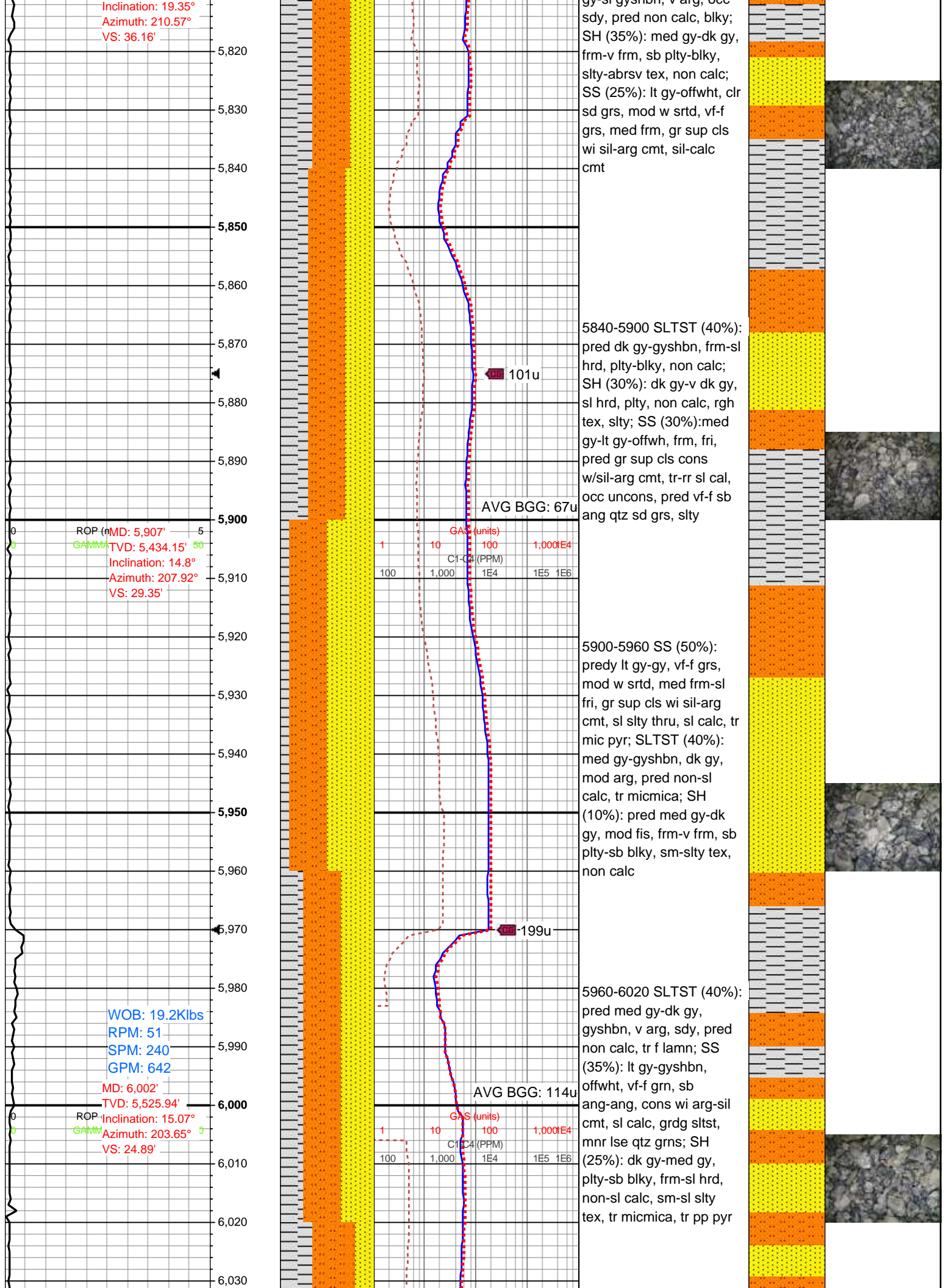
5180-5240 SS (40%):
predy med gy, lt gy-offwht,
mod srted, v arg cls, w srted
ip, vf-f gr, sb rd-rd, mod
frm-v frm cls wi predy arg
cmt, calc cmt ip, occ pyr,
mod calc; SLTST (40%):
predy dk gy, occly lt-med
gy, v arg, l-mod calc; SH
(20%): dk gy, l-mod fis,
med frm, sdy ip, rr arg
strg & vf pyr, non calc

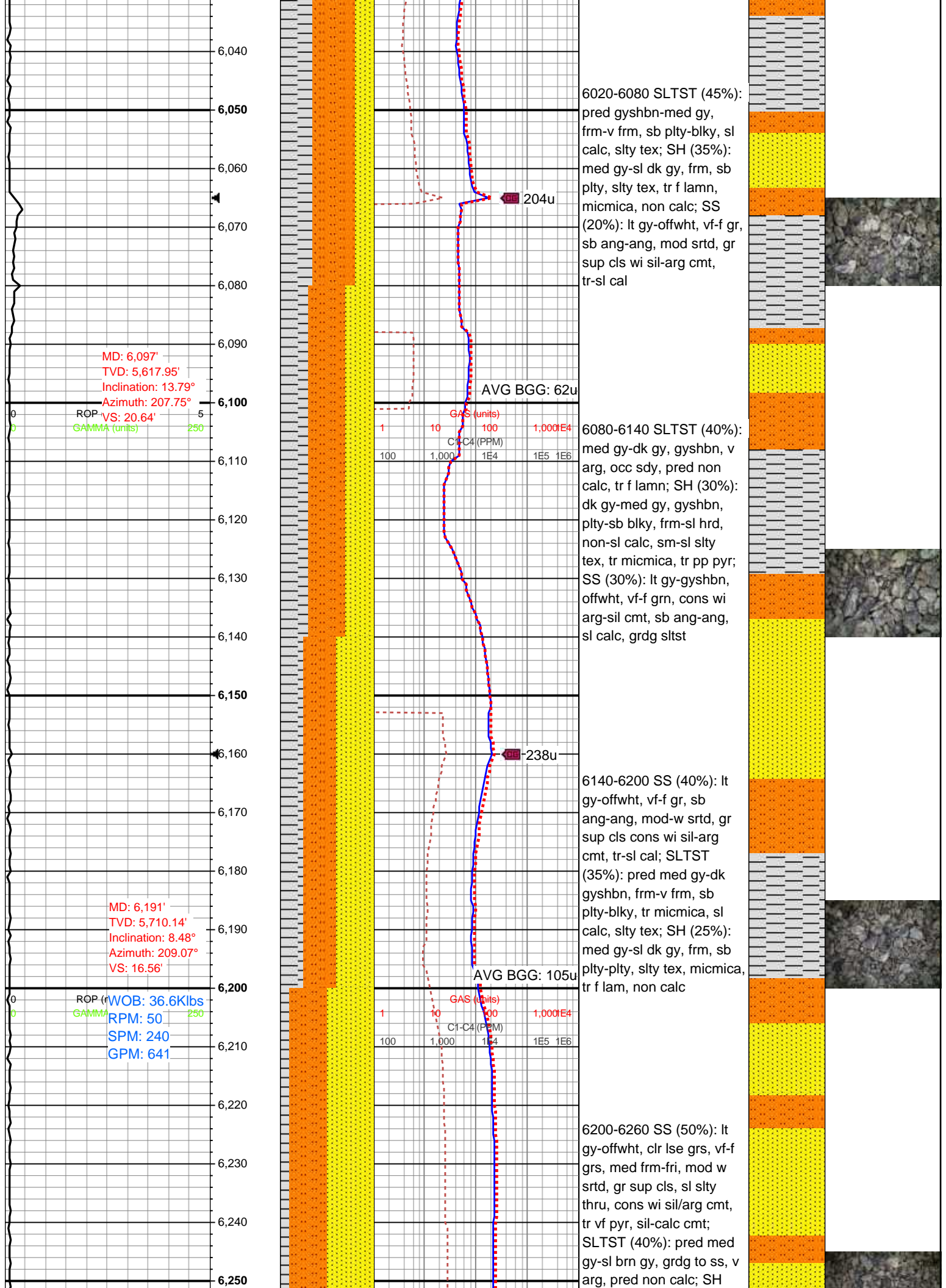
5180-5240 SS (45%): lt
gy-offwht, trns-l-clr ip,
frm-fri ip, com lse qtz
grns, sb rnd-sb ang, vf-f,
mod w srted, com gr sup
cls wi silc-sl arg cmt, tr
pp pyr; SLTST (35%):
pred gy-sl brn gy, v arg,
occ sdy, pred non calc;
SH (20%): gyshbn-med
gy, dk gy, frm, tab-blky,
silty ip, non calc, sl silc, tr
micmica

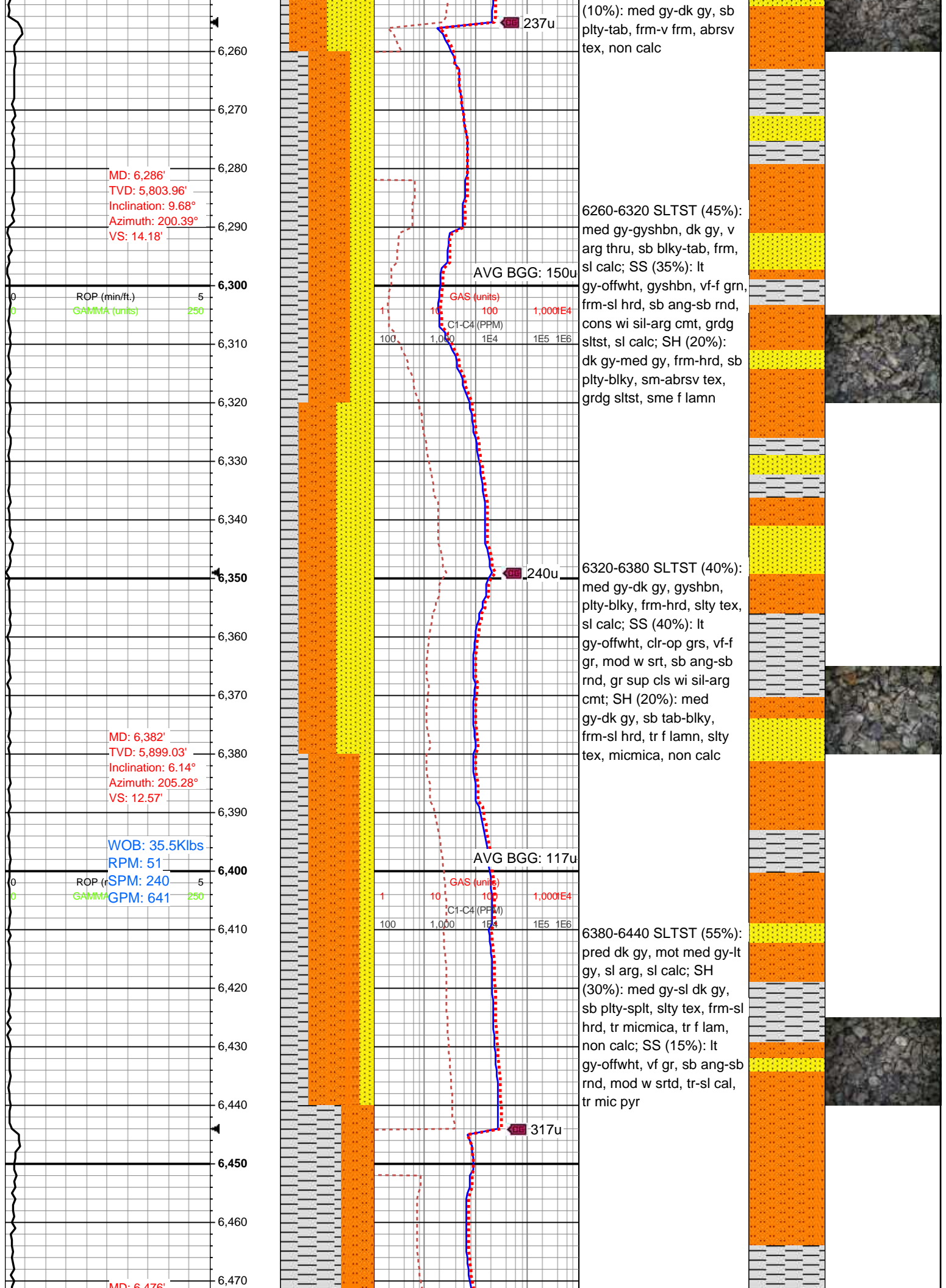
5300-5360 SLTST (45%):
pred med gy-dk gy, frm-sl
hrd, sb blky-sb plty, v arg,
occ sdy, predy non calc;
SH (30%): gy-med gy,
frm, plty-blky, sm-silty tex,
rr f pyr, non calc; SS
(25%): predy lt gy, occ
offwht-clr sd grs, mod w
srted, vf-f grs, med frm-sl
fri, sil cmt-com arg cmt,
sl silty thru

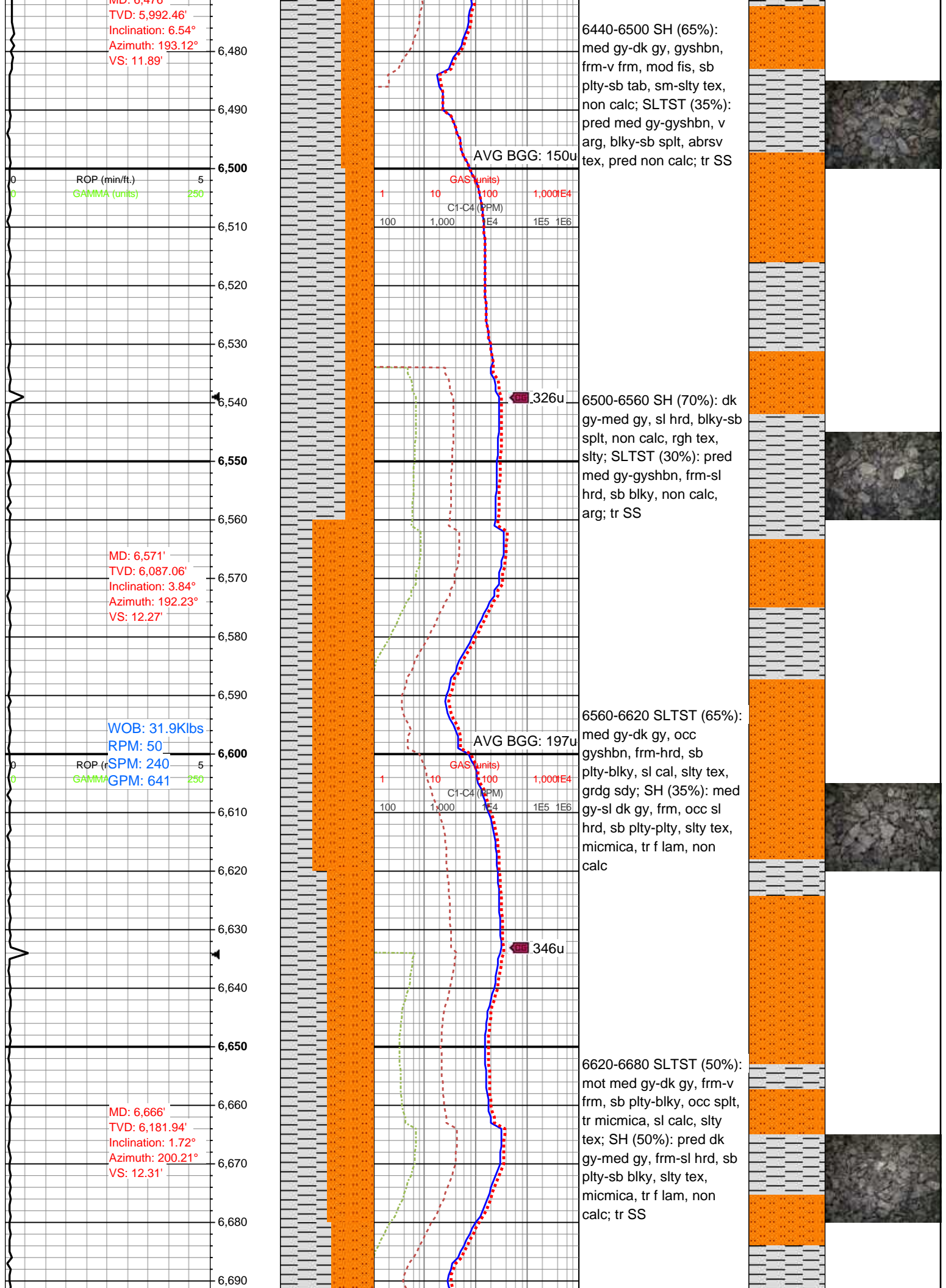


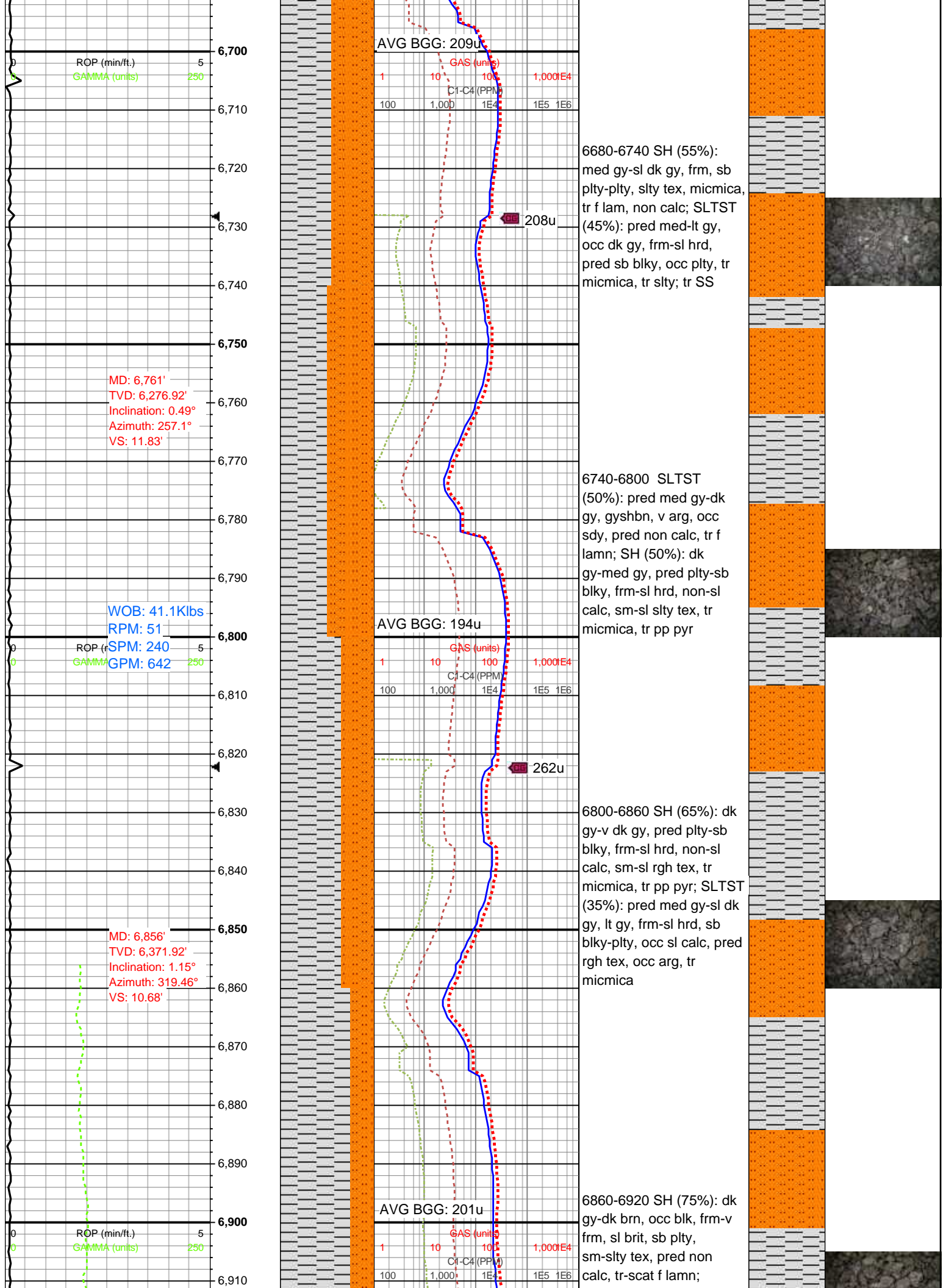


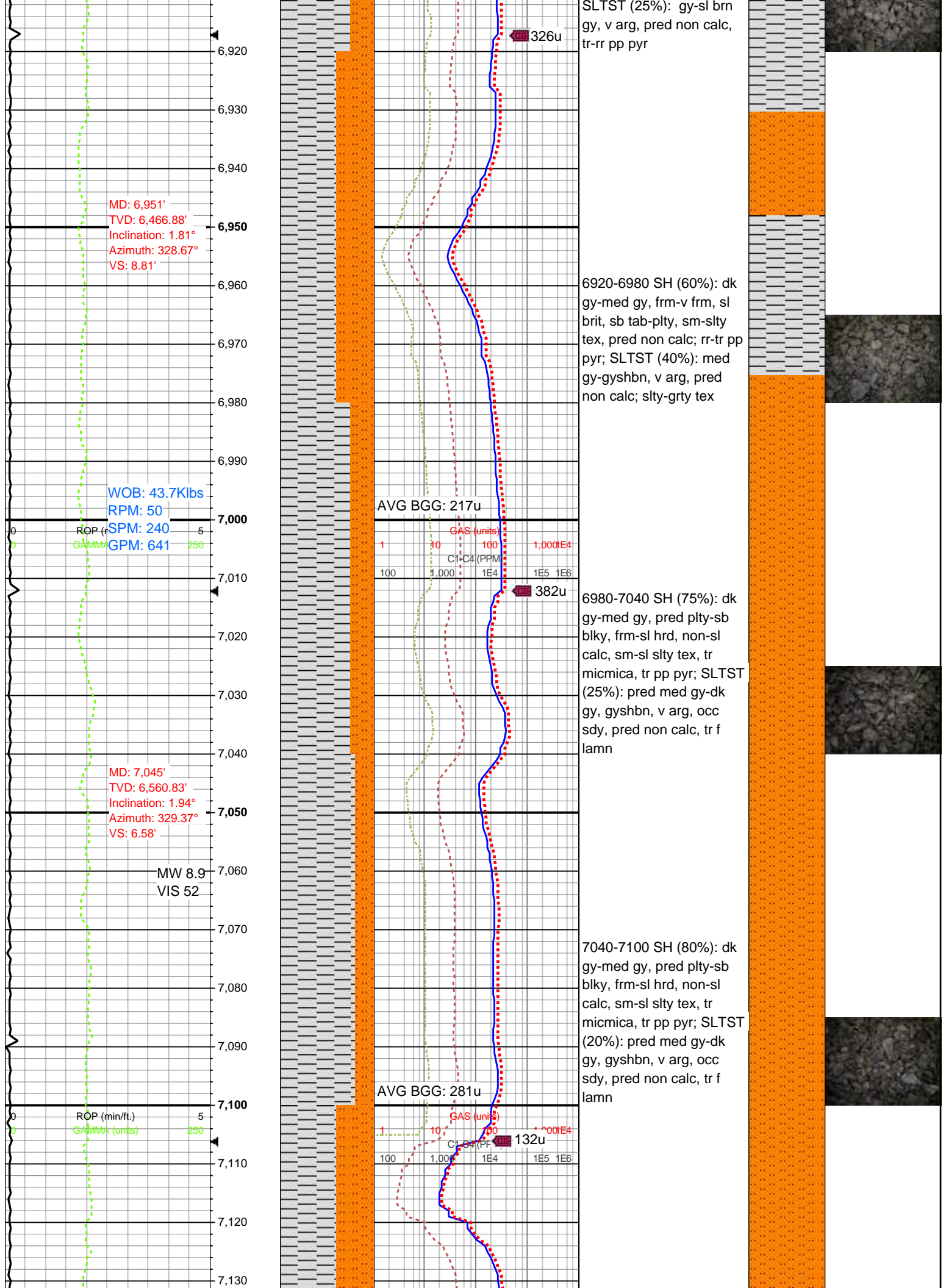


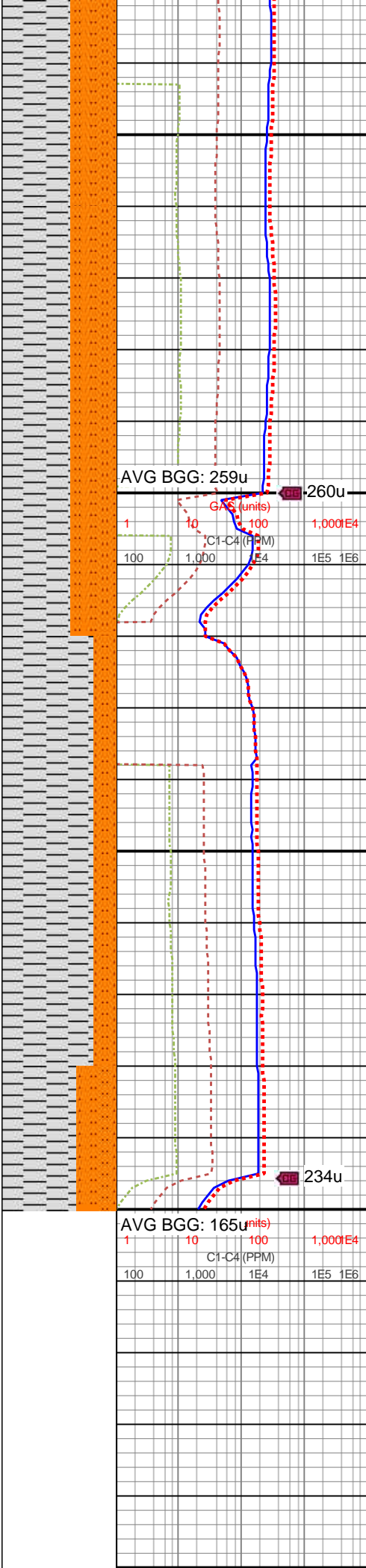
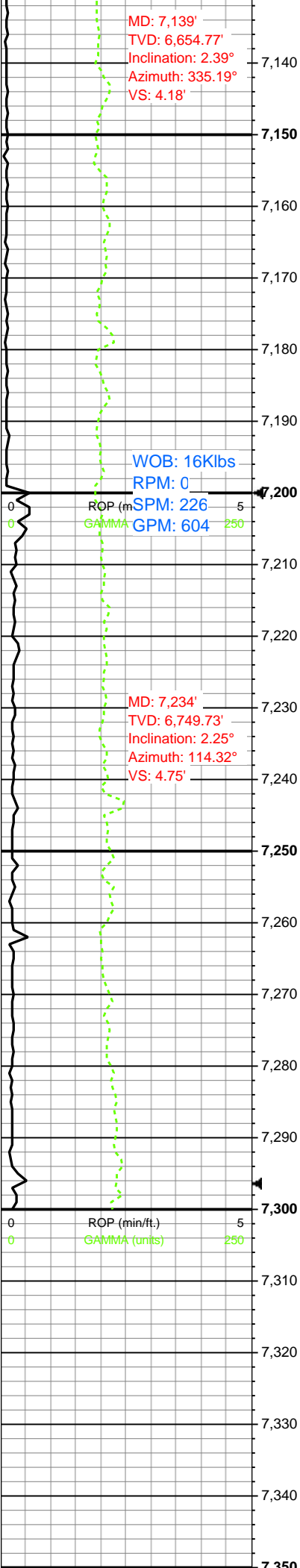












7100-7160 SH (60%): dk gy-med gy, pred plty-sb blk, frm-sl hrd, non-sl calc, sm-sl slty tex, tr micmica, tr pp pyr; SLTST (40%): pred med gy-dk gy, gyshbn, v arg, non calc, tr f lamn

7160-7220 SH (60%): dk gy-med gy, blk-ply, sb elg, frm-sl hrd, sl calc, sm-slty tex, tr micmica, tr pp pyr; SLTST (40%): pred med gy-sl dk gy, gyshbn, sl mot ip, frm-sl hrd, sb blk-ply, sl calc, pred rgh tex, occ arg

7220-7280 SH (80%): dk gy-med gy, pred plty-sb blk, frm-sl hrd, non-sl calc, sm-sl slty tex, tr micmica, tr pp pyr; SLTST (20%): pred med gy-dk gy, gyshbn, v arg, occ sdy, pred non calc, tr f lamn

LOG CONTINUED IN HORIZONTAL FORMAT