



Scale: 5" / 100'  
Measured Depth Log

**Well Name** Fairview 2

**Location** Sec 5, T2N, R68W

**State** CO

**County** Weld

**Country** USA

**Rig Number** Savanna 802

**API Number** 05-123-41666

**Field** Wattenberg

**Geographic Region** DJ Basin

**Drilling Completed** 2/12/2016

**Spud Date** 12/5/2015

**Surface Coordinates** Lat: 40° 9' 56.7252" N  
Long: 105° 2' 5.1612" W

**Bottom Hole Coordinates** Lat: 40° 9' 58.9655" N  
Long: 105° 0' 34.9415" W

**Ground Elevation** 4,948'

**K.B. Elevation** 4,963'

**Logged Interval** 5,000' To 7,300'

**Total Depth** 14,292'

**Formation** J Sand

**Type of Drilling Fluid** Invert

## Operator

**Company** Extraction Oil & Gas

**Address** 1888 Sherman St., Suite 200  
Denver, CO 80203






## Geologist

**Name** Jared Rouse

**Company** Extraction Oil & Gas

**Address** 1888 Sherman St., Suite 200  
Denver, CO 80203

## Zone Color Coding

 Oil	 Condensate	 Gas
 Note	 Core	 Pressure
 Error	 Water	 Seal



## Other

**Equipment** ML-197

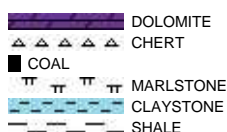
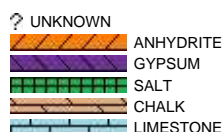
**Comments** Start: 1-28-16  
End: 2-12-16

**Logger Names** Mark Gross / Henry Printz / Brian Ferwerda

**Services Provided** 2-Man Logging

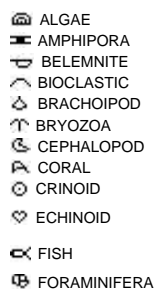
**Address** Empirica, LLC.  
6360 W Sam Houston Pkwy N  
Suite 100  
Houston, TX 77041

## Rock Types



## Accessories

### Fossils



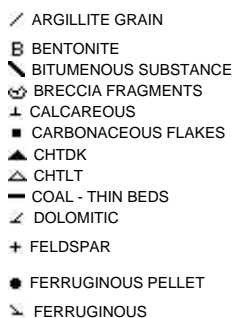
### Fossil



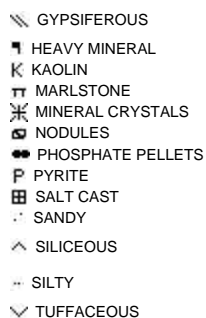
### Minerals



### Argillaceous



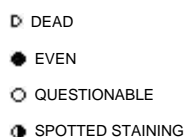
### Glauconite



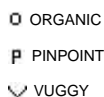
### Stringer



### Oil Show



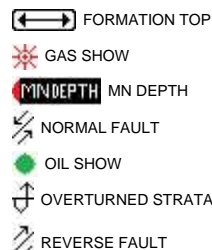
### Porosity



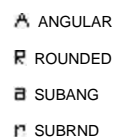
### Engineering



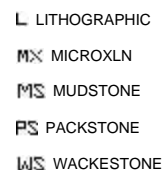
## Other Symbols



### Rounding



### Textures



### Sorting

PROPERTY

- E EARTHY
- ▣ FENESTRAL
- F FRACTURE
- × INTERCRYSTALLINE
- ⊕ INTEROOLITIC
- ⚡ MOLDIC

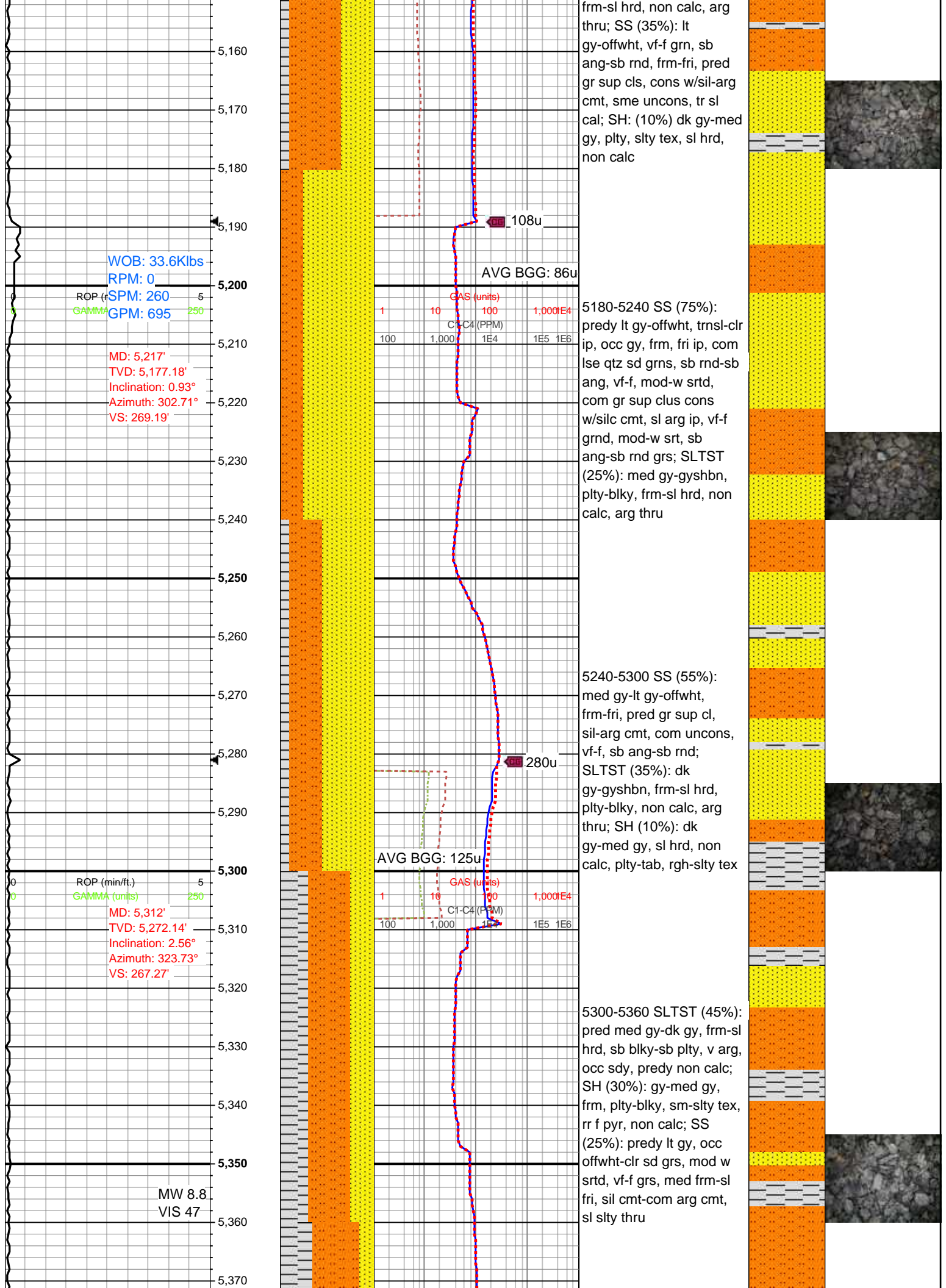
- ◀ CONNECTION (LEFT)
- ▶ CONNECTION (RIGHT)
- ⬮ CONNECTION GAS
- ⬇ CORE - LOST
- CORE - RECOVERED
- ⋮ DST INTERVAL
- ⚡ FAULT

- ◀ SIDEWALL CORE (LEFT)
- ▶ SIDEWALL CORE (RIGHT)
- ▨ SLIDE
- DS SURVEY
- ⬮ TRIP GAS
- ◀ WIRELINE TESTED - LEFT
- ▶ WIRELINE TESTED - RT

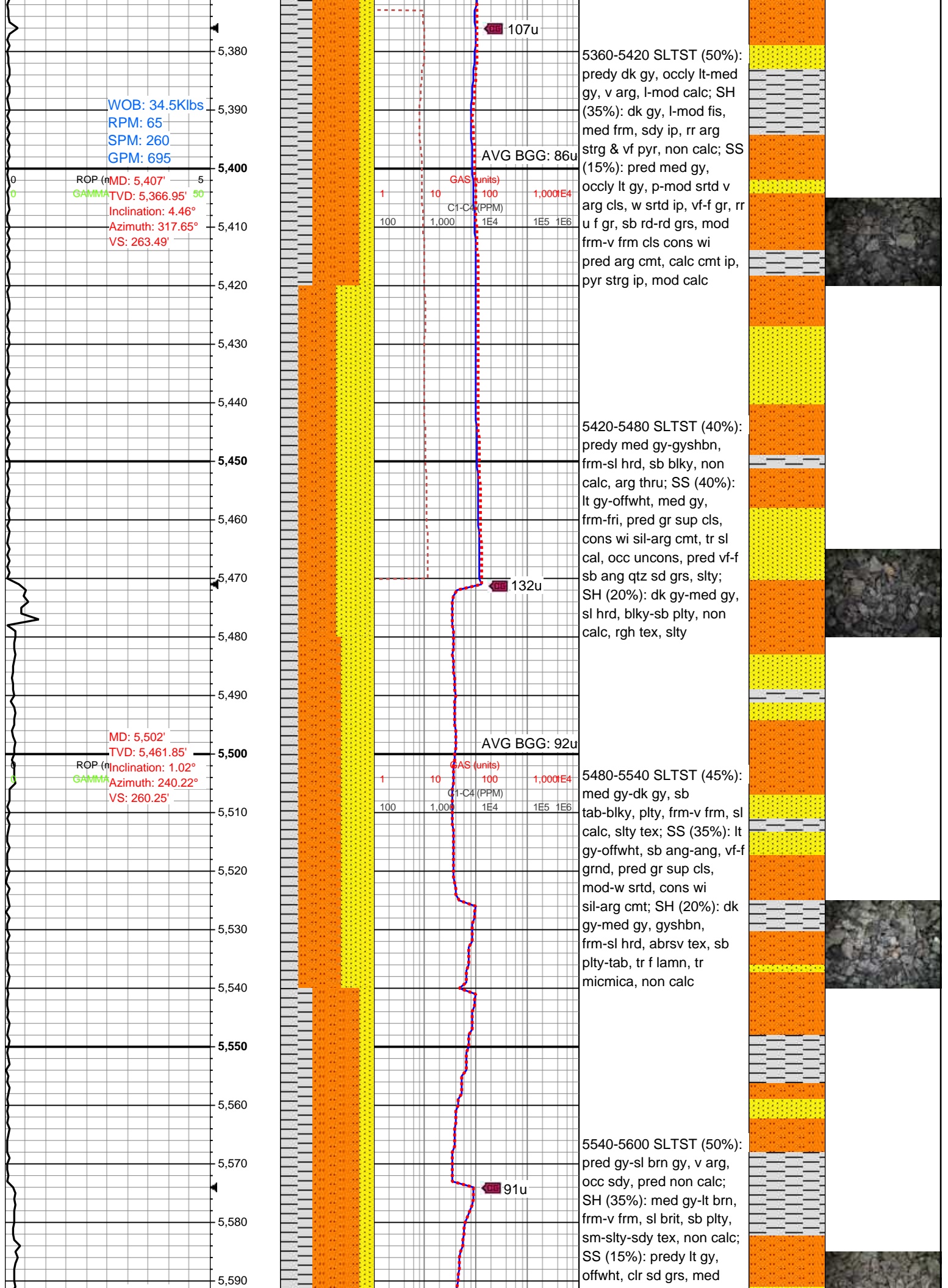
- BS BOUNDSTONE
- C CHALKY
- CX CRYPTOXLN
- E EARTHY
- F× FINELYXLN
- GS GRAINSTONE

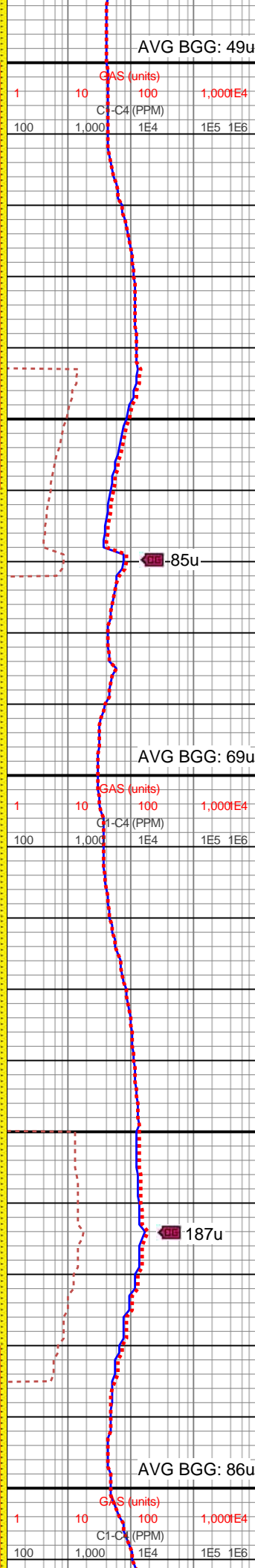
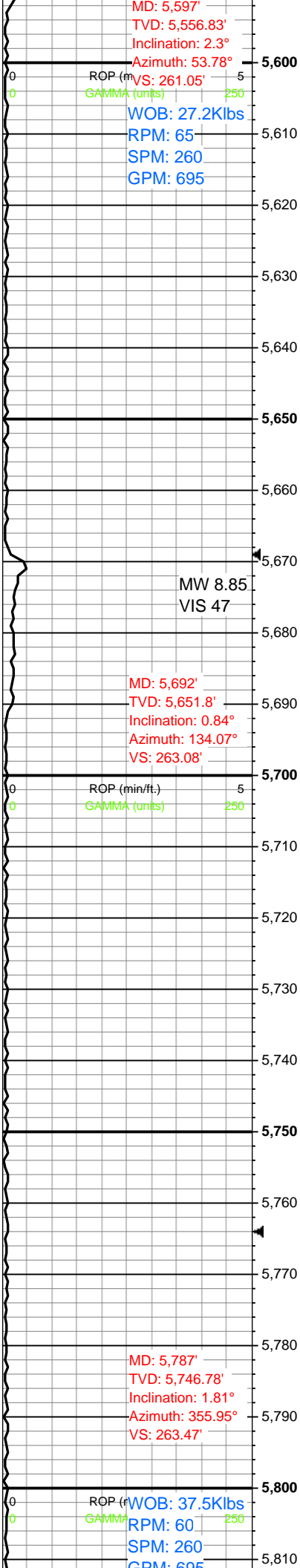
- M MODERATE
- P POOR
- W WELL

ROP ROP — GAMMA - - -	Depth Labels	% Lith	Total Gas & Chromatograph GAS ..... C1 — C2 - - - C3 - - - C4 .....	Lithology Descriptions	Interp Lith	Images
<b>Extraction OG (min/ft.) Fairview 2</b>			Bit #: 2 Type: E516-B34-Z Size: 7.88 Depth In: 1,583' Jets: 7x10 S/N: A196174			
	4,960					
	4,970					
	4,980					
	4,990					
	5,000					
WOB: 26.1Klbs RPM: 0 SPM: 260 GPM: 695	5,010					
	5,020					
MD: 5,029' TVD: 4,989.39' Inclination: 2.52° Azimuth: 45.45° VS: 268.54'	5,030					
	5,040					
	5,050					
	5,060					
	5,070					
	5,080					
	5,090					
	5,100					
ROP (min/ft.) GAMMA (units)	5,110					
	5,120					
MD: 5,123' TVD: 5,083.26' Inclination: 3.67° Azimuth: 358.94° VS: 269.92'	5,130					
	5,140					
	5,150					









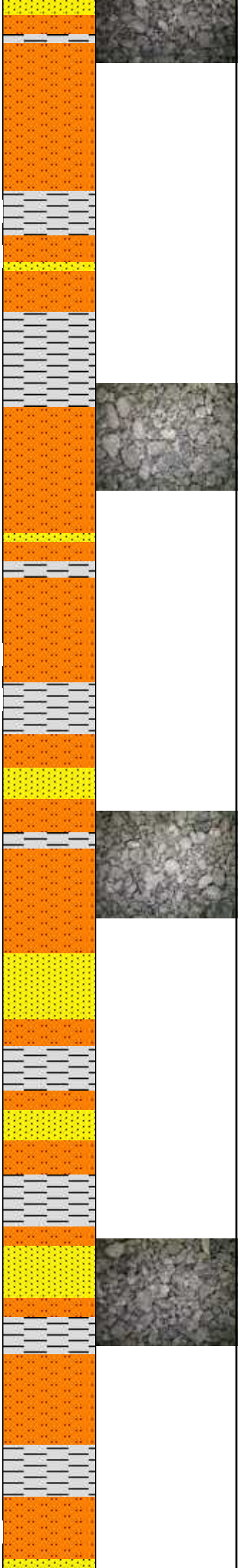
frm-sl fri, mod w srted, vf-f grs, sil-arg cmt, sl slty thru

5600-5660 SLTST (65%):  
gy-gyshbn, occ lt gy-dk gy, occ sd grs, mod-v arg, pred non calc-v sl calc; SH (30%): pred med gy, occ dk gy, mod fis, frm-v frm, sb plty-plty, sm-sltly tex, non calc; SS (5%): pred lt gy-gy, vf f grs, mod w srted, med frm-sl fri, gr sup cls, cons wi sil cmt-com arg cmt, sl slty thru, sl calc

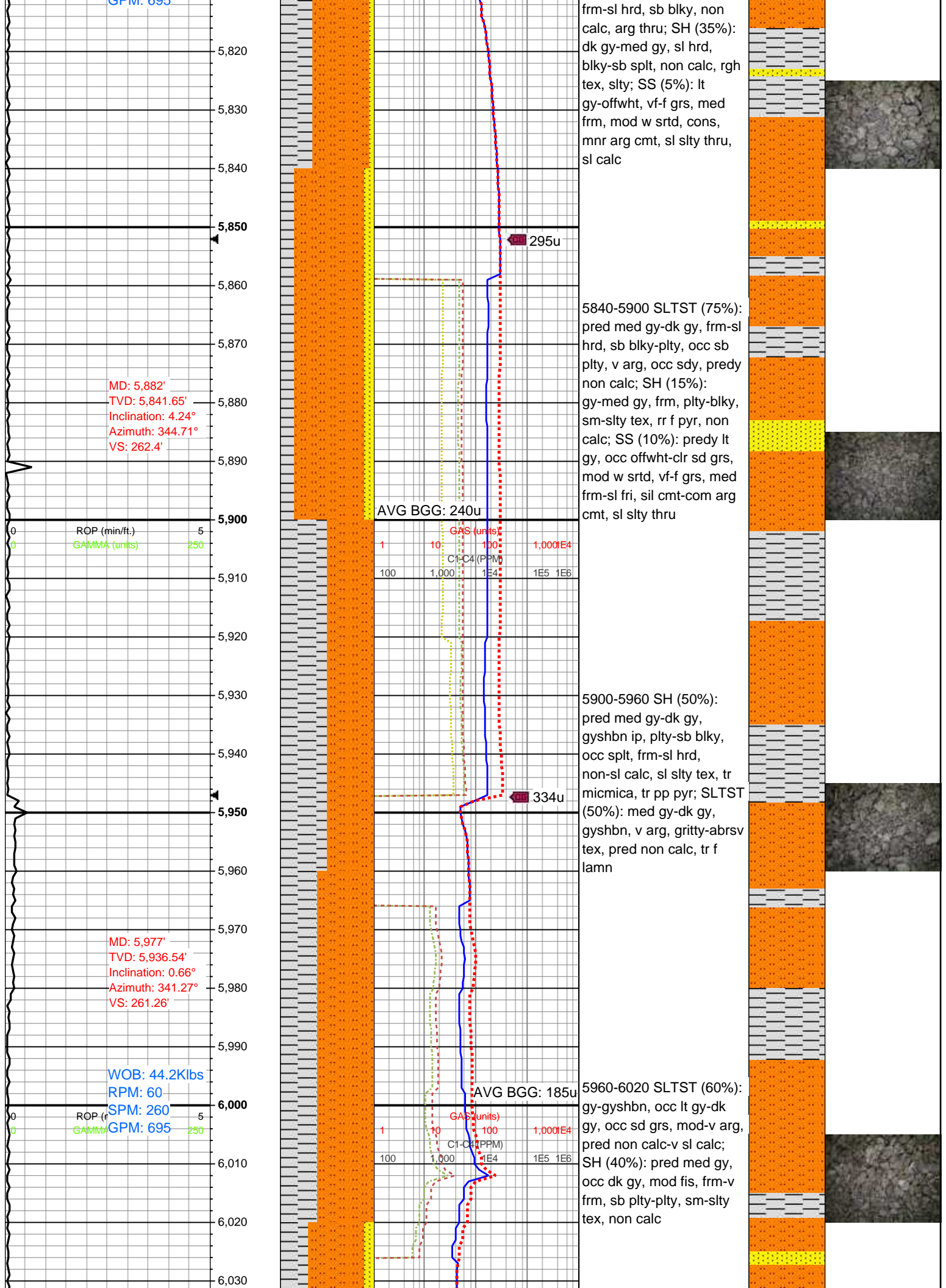
5660-5720 (70%) SLTST:  
pred dk gy-gyshbn, frm-sl hrd, plty-sb blkly, non calc, arg thru; SH: (15%) dk gy-med gy, sl hrd, sb plty, non calc, rgh tex, slty, hi cly content; SS (15%): med gy-lt gy-offwh, frm, fri, pred gr sup cls wi sil-arg cmt, tr sl cal, occ uncons, pred vf-f sb ang qtz sd grs, slty

5720-5780 SS (45%): lt gy-offwh, tr s&p, frm-fri, gr sup cls wi sil-arg cmt, sme uncons, vf-f grnd, sb ang-sb rnd, w srt; SLTST (30%): dk gy-med gy, gyshbn, frm-sl hrd, sb blkly-plty, slty tex, non-v sl calc, tr micmica; SH (25%): dk gy-med gy, frm-sl hrd, plty, non calc, slty tex

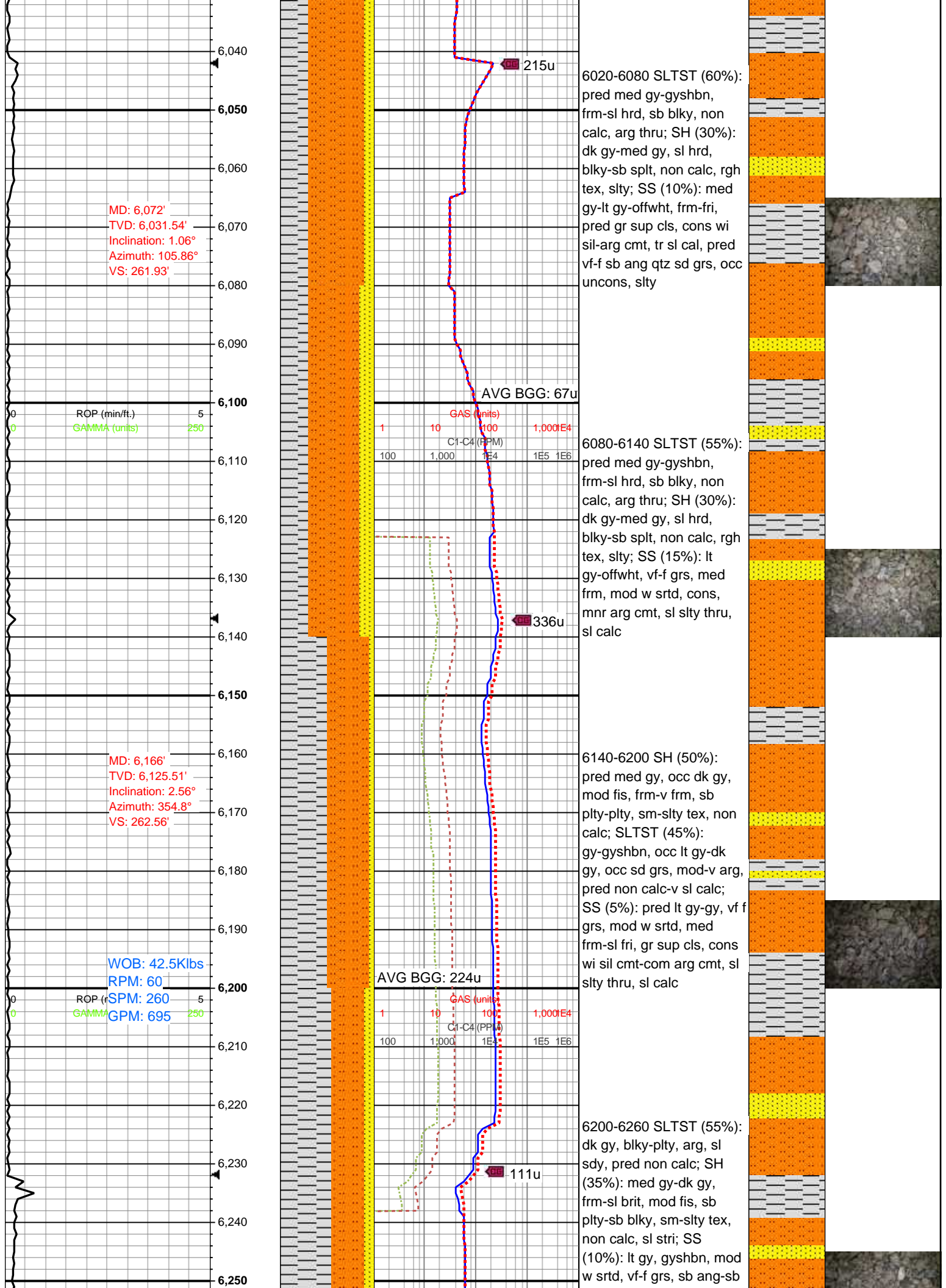
5780-5840 SLTST (60%):  
pred med gy-gyshbn,

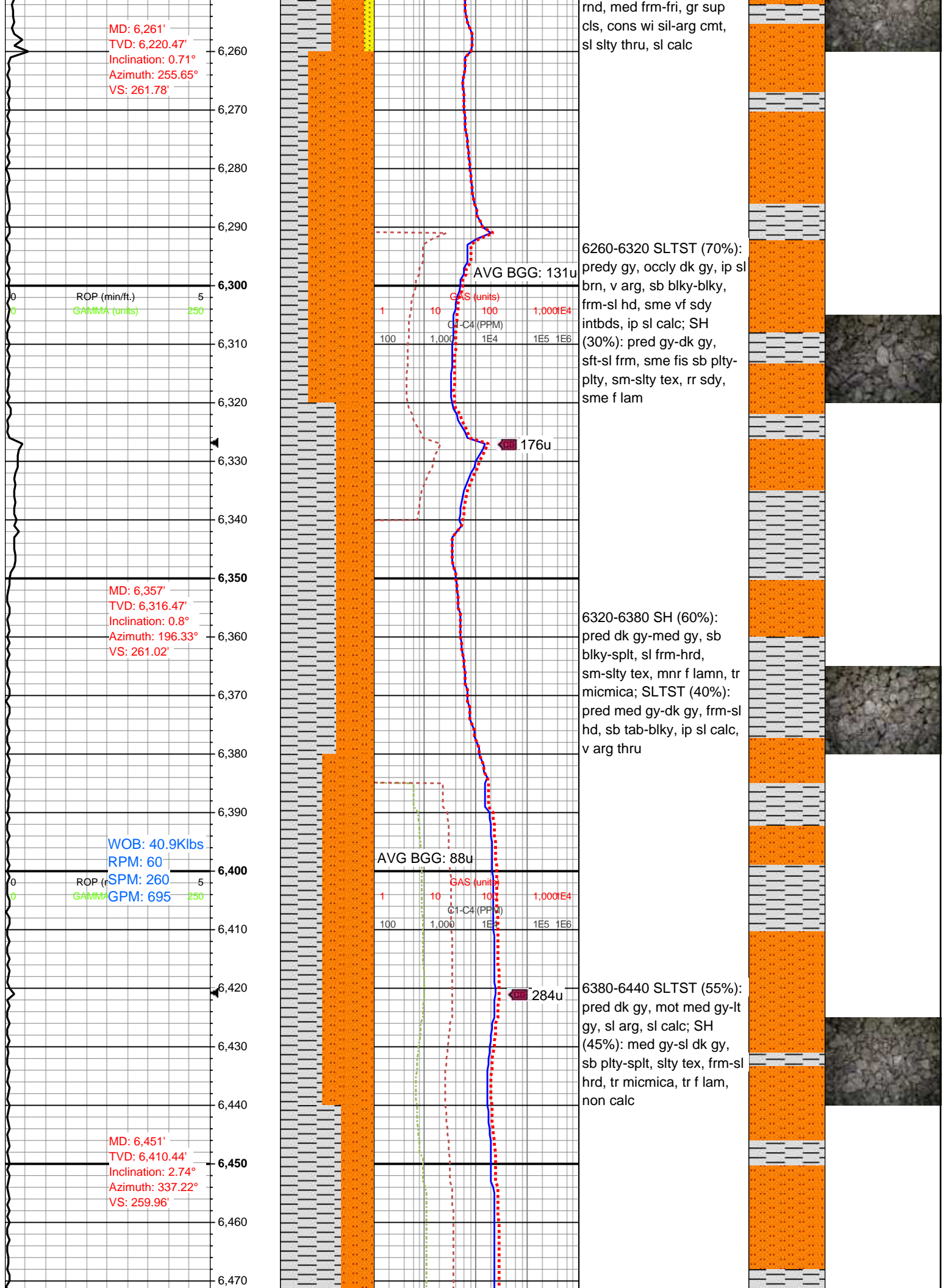




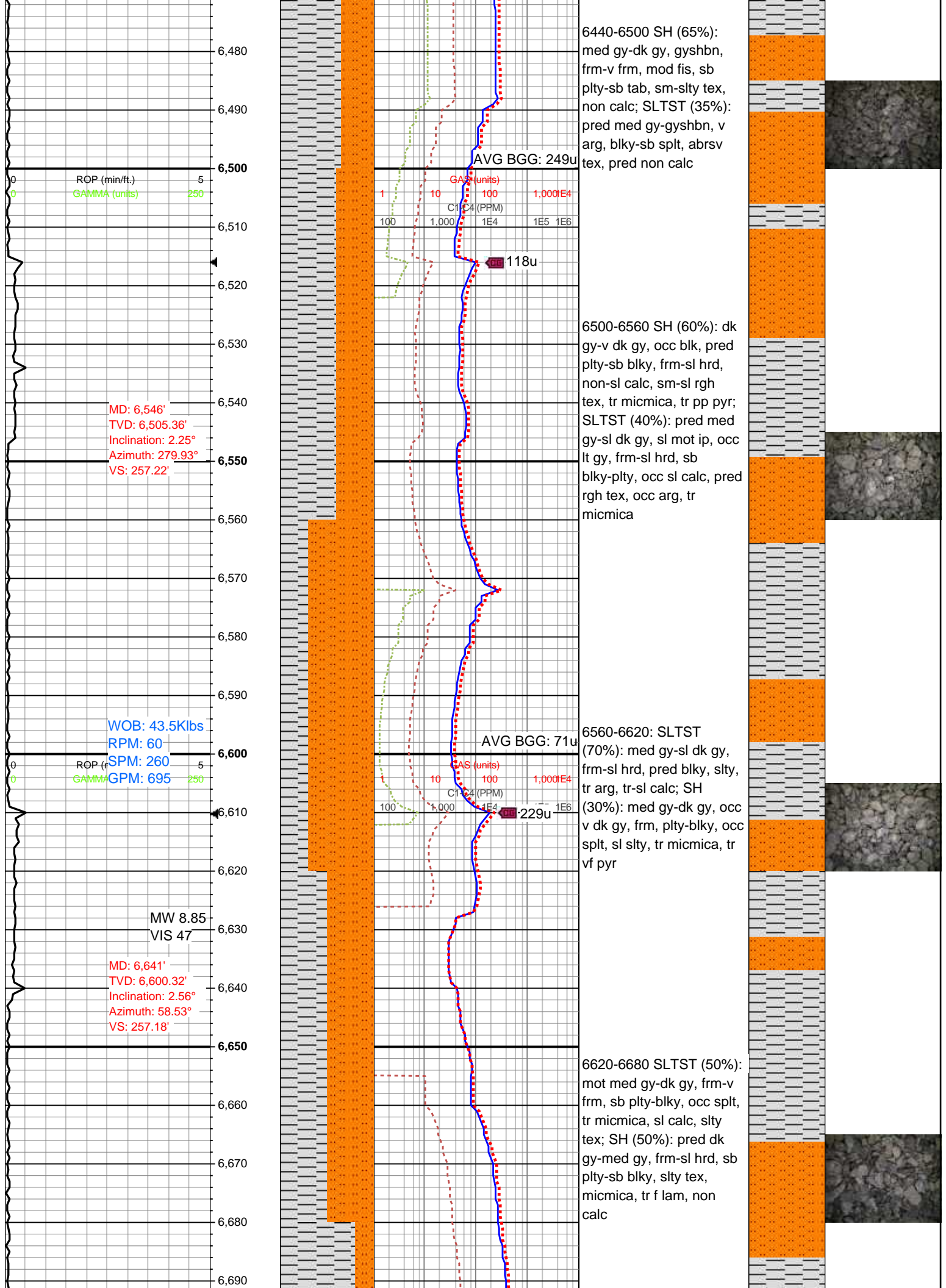




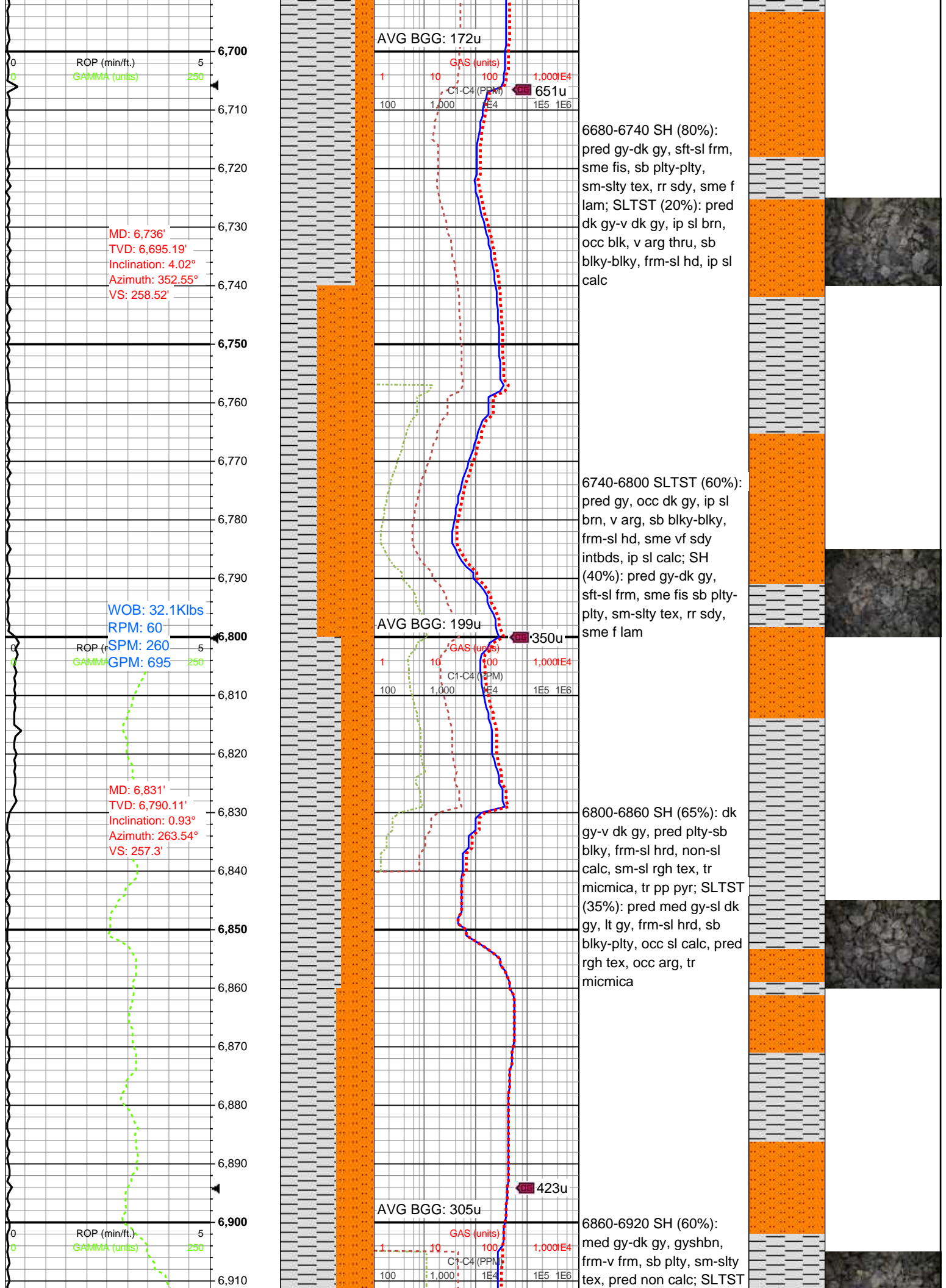


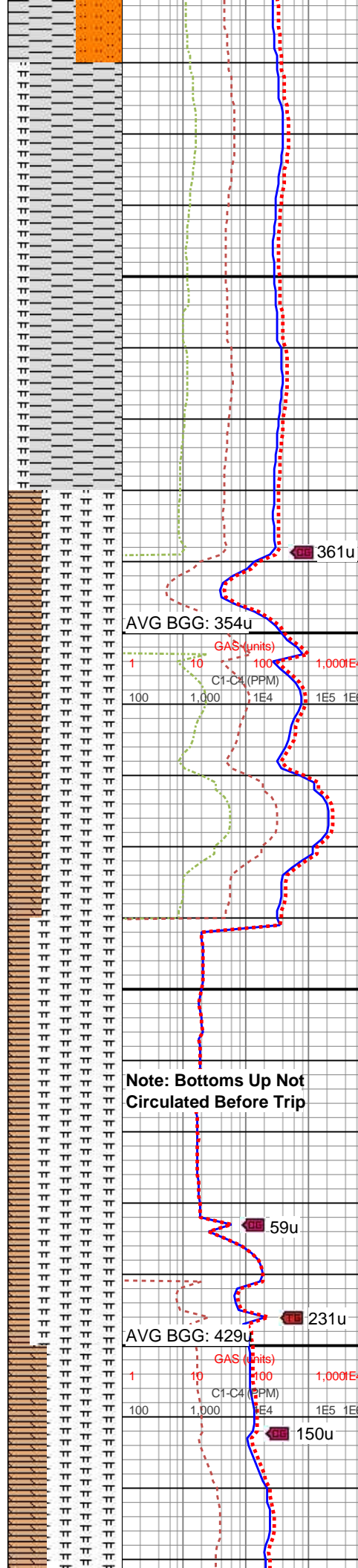
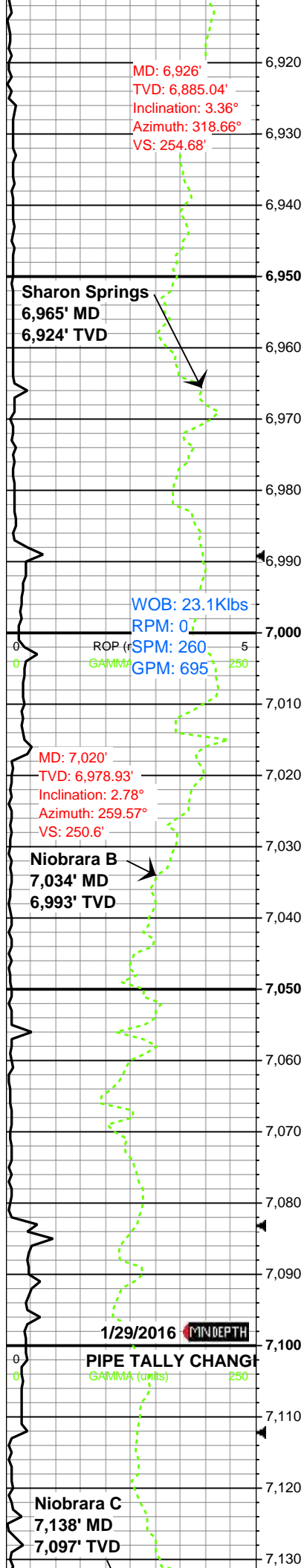












(40%): gy-sl bnshgy, v arg, mnrdy, pred non calc, spltsb blkly

6920-6980 SH (80%): med gy-dk gy, sb blkly, frm-sl hrd, sl micmica, non-sl calc; MRLST (20%): dk gy-med gy, sl hrd, plty-blky, sl slty tex, v calc, tr lam, scat pp pyr; tr SLTST

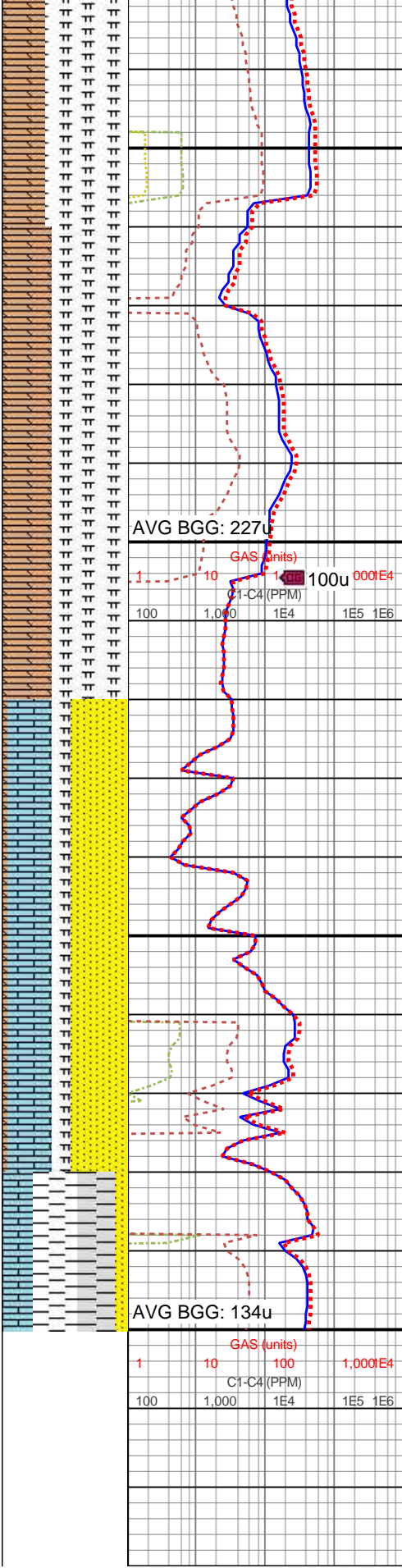
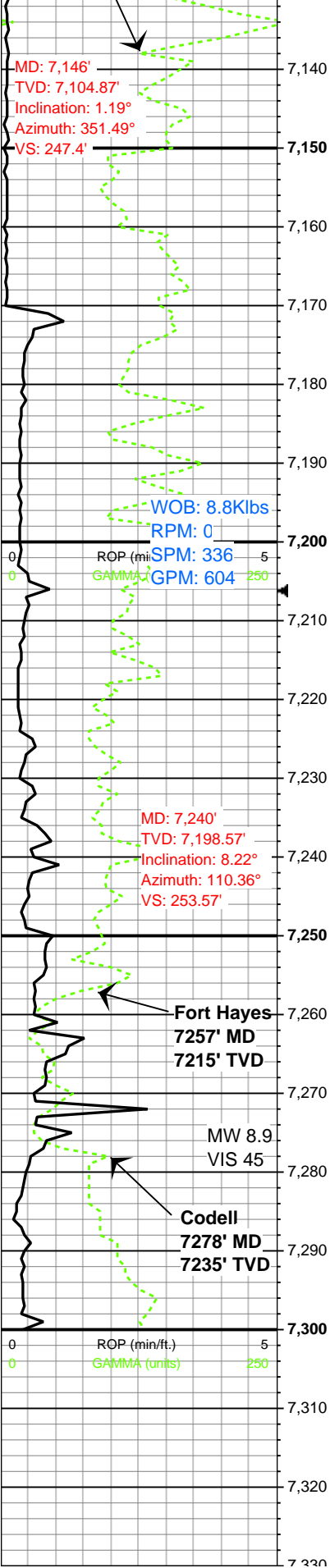
6980-7040 MRLST (70%): dk gy-dk gyshbn, med gy, frm-sl hrd, plty-sb blkly, sm-sl slty tex, v calc, scat pp mic pyr; CHK (30%): mot gyshbn-crm, offwht, sft, mnrdy mic fos, chky tex, stri ip, sb blkly-tab; tr SH

7040-7100 MRLST (80%): dk gy-v dk gy, med gy-gyshbn, frm-sl hrd, plty-blky, sm-sl slty tex, v calc, tr f lam, scat mic pyr; CHK (20%): pred lt gyshbn-crm, tn, chky tex, calc, mnrdy micfos, spltsb tab, dul yelgn flor

7100-7160 MRLST







(65%): dk gy-v dk gy, med gy-gyshbn, sm-sl slty tex, frm-sl hrd, plty-blky, v calc, tr f lam, scat pp pyr; CHK (35%): predy offwht-lt gyshbn, occ crm-tn, chky tex, calc, lam ip, mrlst intbdd, dul yelgn flor

7160-7220 MRLST (60%): mot dk gy-dk gyshbn, frm-sl hrd, pred sb plty-splt, sl slty tex, v calc, mn micfos, scat pyrc nod/pp mic pyr; CHK (40%): gyshbn-crm, offwht, chky tex, calc, sb splty-blky, mrlst intbdd, dul yelgn flor

7220-7280 SS (45%): gyshbn-offwht, med gy, vf-f grs, mod srted, sb ang-sb rd, gr sup cls wi arg-silc cmt, sl calc; LS (35%): crm-gyshbn, lt brn, blky, frm, microxln, intbdd sh; MRLST (15%): dk gy-gyshbn, plty-splt, sl hrd, v calc, scat pyrc nod; CHK (5%): mot gyshbn-lt gy, crm, v sft, chky tex, sb blky, non calc

LOG CONTINUED IN HORIZONTAL FORMAT

