

NOTES:  
 EXISTING WELL PAD WITH TYPICAL PAD EQUIPMENT  
 GROUND ELEVATION = 7851.2' NAVD '88 DATUM  
 BENCH MARK = USGS BC R268, ELEV. OF 6705.95'  
 LAT. = 39°05'39.6"N LAT. = 39.09432°N  
 LON. = 107°26'16.3"W LON. = 107.43785°W  
 NAD 83 DATUM  
 PDOP = 1.5 (MAX)  
 GPS OPERATOR: DAVID NICEWICZ  
 DRAWING DATE: March 14, 2016  
 FIELD DATE: Sept. 2013

**LEGEND**

- ◆ ~ FOUND ORIGINAL STONE
- ~ FOUND GLO BRASS CAP ON STEEL POST
- ⊕ ~ FOUND REBAR AND CAP BY LS15710
- ~ FOUND No.6 REBAR WITH A 2 1/2" ALUMINUM CAP, LS24963
- ~ WELL HEAD
- (M) ~ MEASURED IN FIELD
- (R) ~ RECORD GLO DATA, 1922
- └ ~ 90° SYMBOL
- WC ~ WITNESS CORNER

**BASIS OF BEARING:**

THE LINE FROM THE SE CORNER TO THE E 1/4 CORNER OF SECTION 15, TOWNSHIP 11 SOUTH, RANGE 90 WEST, 6TH P.M., WAS ASSUMED TO BEAR N. 0°19'48" E. AS MONUMENTED AND SHOWN HEREON.

**CERTIFICATE OF SURVEY:**

I, David G. Nicewicz, a Registered Land Surveyor in the State of Colorado, do hereby certify that the survey represented by this plat was made under my direction and supervision, and that this plat accurately represents this survey.

David G. Nicewicz P.L.S. No. 24963  
 (for and on behalf of AECOM)



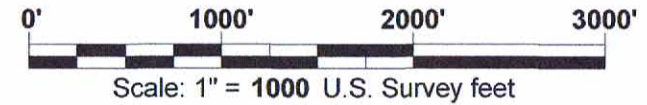
**GAS WELL LOCATION PLAT**

FEDERAL 11-90-15 #3  
 SURFACE LOCATION

Located in the SE 1/4 Section 15, T. 11 S., R. 90 W.,  
 Sixth P.M., Gunnison County, Colorado

SURVEYED BY: DGN	DWG DATE: 03/14/2016	AECOM David G. Nicewicz, PLS 804 Colorado Ave, Suite 201 Glenwood Springs Co 81610 cell: (720) 456-1104 email: david.nicewicz@aecom.com
DRAFTED BY: MLD	SCALE: 1" = 1000'	
JOB NO.: 22243490.01000	SHEET NO. 1 of 1	

AECOM OF GLENWOOD SPRINGS COLORADO, has in accordance with a request from ERIC SANFORD, for SG INTERESTS I, LTD, determined the location of FEDERAL 11-90-15 #3 SURFACE LOCATION to be 575 FSL & 1516 FWL Section 15, Township 11 South, Range 90 West, of the Sixth Principal Meridian, Gunnison County, Colorado.



**LEGEND**

- ◆ ~ FOUND ORIGINAL STONE
- ~ FOUND GLO BRASS CAP ON STEEL POST
- ⊕ ~ FOUND REBAR AND CAP BY LS15710
- ~ FOUND No.6 REBAR WITH A 2 1/2" ALUMINUM CAP, LS24963
- ~ WELL HEAD
- (M) ~ MEASURED IN FIELD
- (R) ~ RECORD GLO DATA, 1922
- L ~ 90° SYMBOL
- WC ~ WITNESS CORNER

**BASIS OF BEARING:**

THE LINE FROM THE SE CORNER TO THE E 1/4 CORNER OF SECTION 15, TOWNSHIP 11 SOUTH, RANGE 90 WEST, 6TH P.M., WAS ASSUMED TO BEAR N. 0°19'48" E. AS MONUMENTED AND SHOWN HEREON.

**CERTIFICATE OF SURVEY:**

I, David G. Nicewicz, a Registered Land Surveyor in the State of Colorado, do hereby certify that the survey represented by this plat was made under my direction and supervision, and that this plat accurately represents this survey.

David G. Nicewicz P.L.S. No. 24963  
(for and on behalf of AECOM)

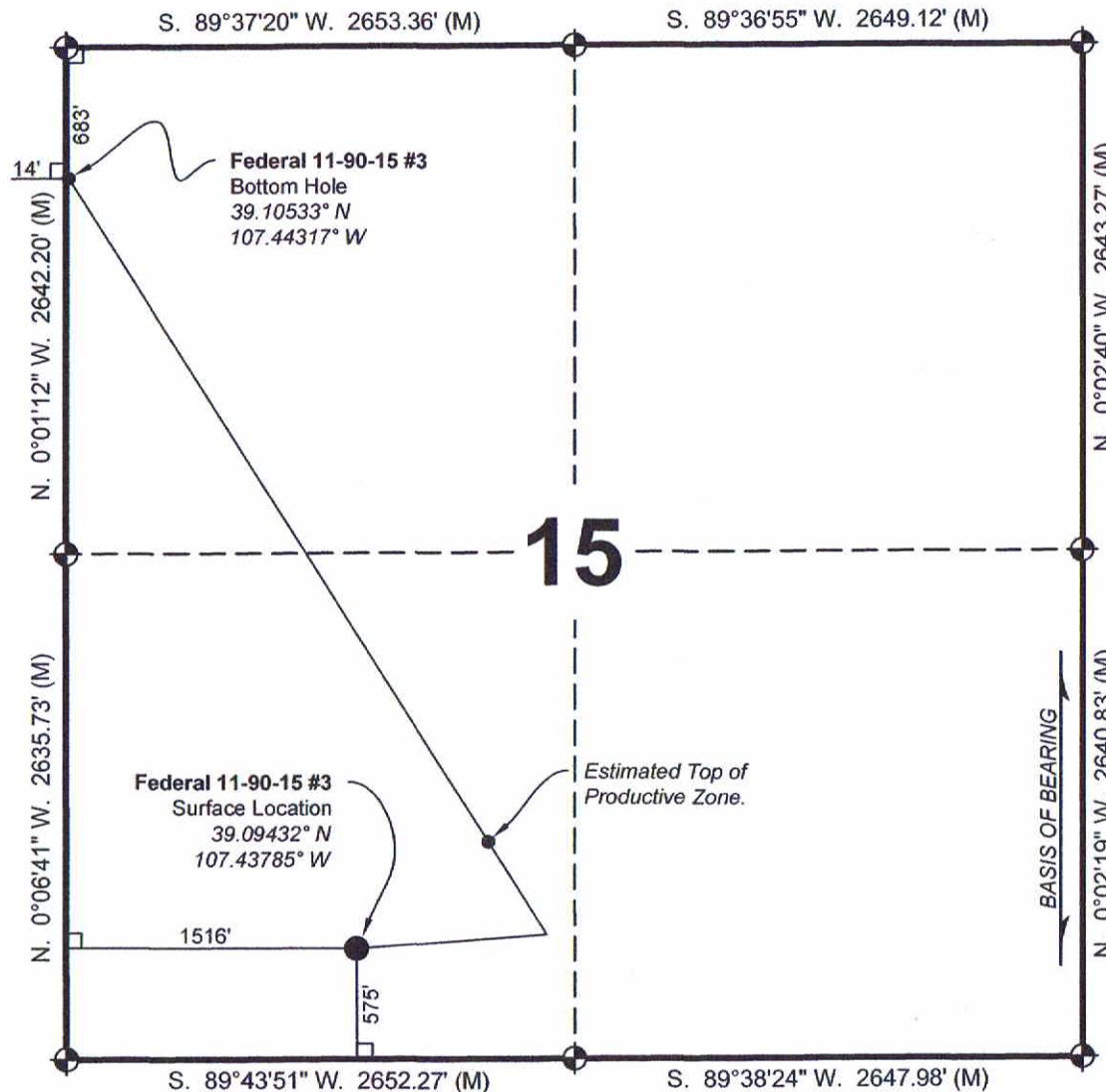


# **GAS WELL LOCATION PLAT**

**FEDERAL 11-90-15 #3  
BOTTOM HOLE LOCATION**

Located in the NW 1/4 Section 15, T. 11 S., R. 90 W.,  
Sixth P.M., Gunnison County, Colorado

SURVEYED BY: DGN	DWG DATE: 03/14/2016	AECOM David G. Nicewicz, PLS 804 Colorado Ave, Suite 201 Glenwood Springs Co 81610 cell: (720) 456-1104 email: david.nicewicz@aecom.com
DRAFTED BY: MLD	SCALE: 1" = 1000'	
JOB NO.: 22243490.01000	SHEET NO. 1 of 1	



AECOM OF GLENWOOD SPRINGS COLORADO, has in accordance with a request from ERIC SANFORD, for SG INTERESTS I, LTD, determined the location of FEDERAL 11-90-15 #3 BOTTOM HOLE to be 683 FNL & 14 FWL Section 15, Township 11 South, Range 90 West, of the Sixth Principal Meridian, Gunnison County, Colorado.