



PROJECT DETAILS: Weld County, CO NAD 83

Geodetic System: US State Plane 1983
Datum: North American Datum 1983
Ellipsoid: GRS 1980
Zone: Colorado Northern Zone
System Datum: Mean Sea Level
Local North: True

Project: Weld County, CO NAD 83
Site: Evans 7-26 Pad
Well: Evans 10C-14-L
Wellbore: OH
Design: Plan #1



Azimuths to True North
Magnetic North: 8.48°



Magnetic Field
Strength: 52529.6snT
Dip Angle: 66.93°
Date: 3/9/2016
Model: BGGM2015

SECTION DETAILS

MD	Inc	Azi	TVD	+N/-S	+E/-W	Dleg	TFace	VSect
0.00	0.00	0.00	0.00	0.00	0.00	0.00	0.00	0.00
1300.00	0.00	0.00	1300.00	0.00	0.00	0.00	0.00	0.00
1985.01	13.70	151.64	1978.50	-71.72	38.72	2.00	151.64	-70.11
4808.34	13.70	151.64	4721.50	-660.14	356.38	0.00	0.00	-645.29
5493.35	0.00	0.00	5400.00	-731.86	395.10	2.00	180.00	-715.40
6967.48	0.00	0.00	6874.13	-731.86	395.10	0.00	0.00	-715.40
7785.33	89.96	359.89	7395.00	-211.32	394.10	11.00	359.89	-195.32
17344.53	89.96	359.89	7401.00	9347.86	375.72	0.00	0.00	9355.41

DESIGN TARGET DETAILS

Name	TVD	+N/-S	+E/-W	Northing	Easting	Latitude	Longitude	Shape
PBHL	7401.00	9347.86	375.72	1388804.43	3210901.11	40.3981980	-104.7427640	Point
- plan hits target center								

WELL DETAILS: Evans 10C-14-L

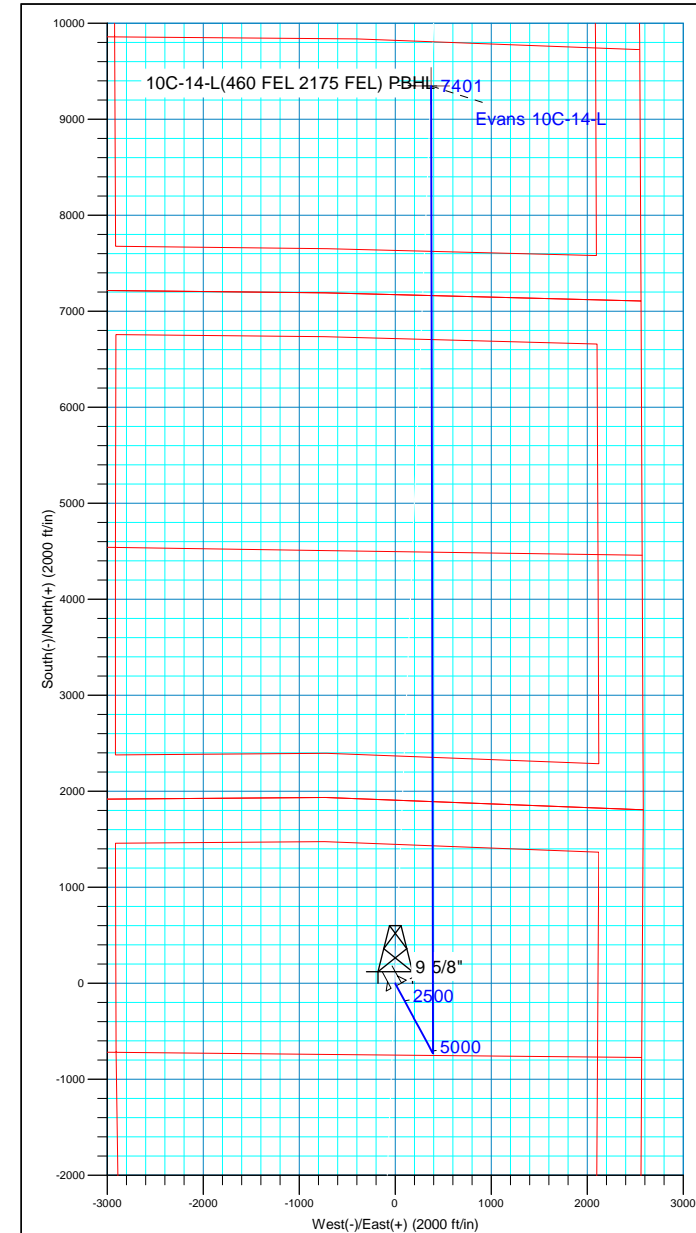
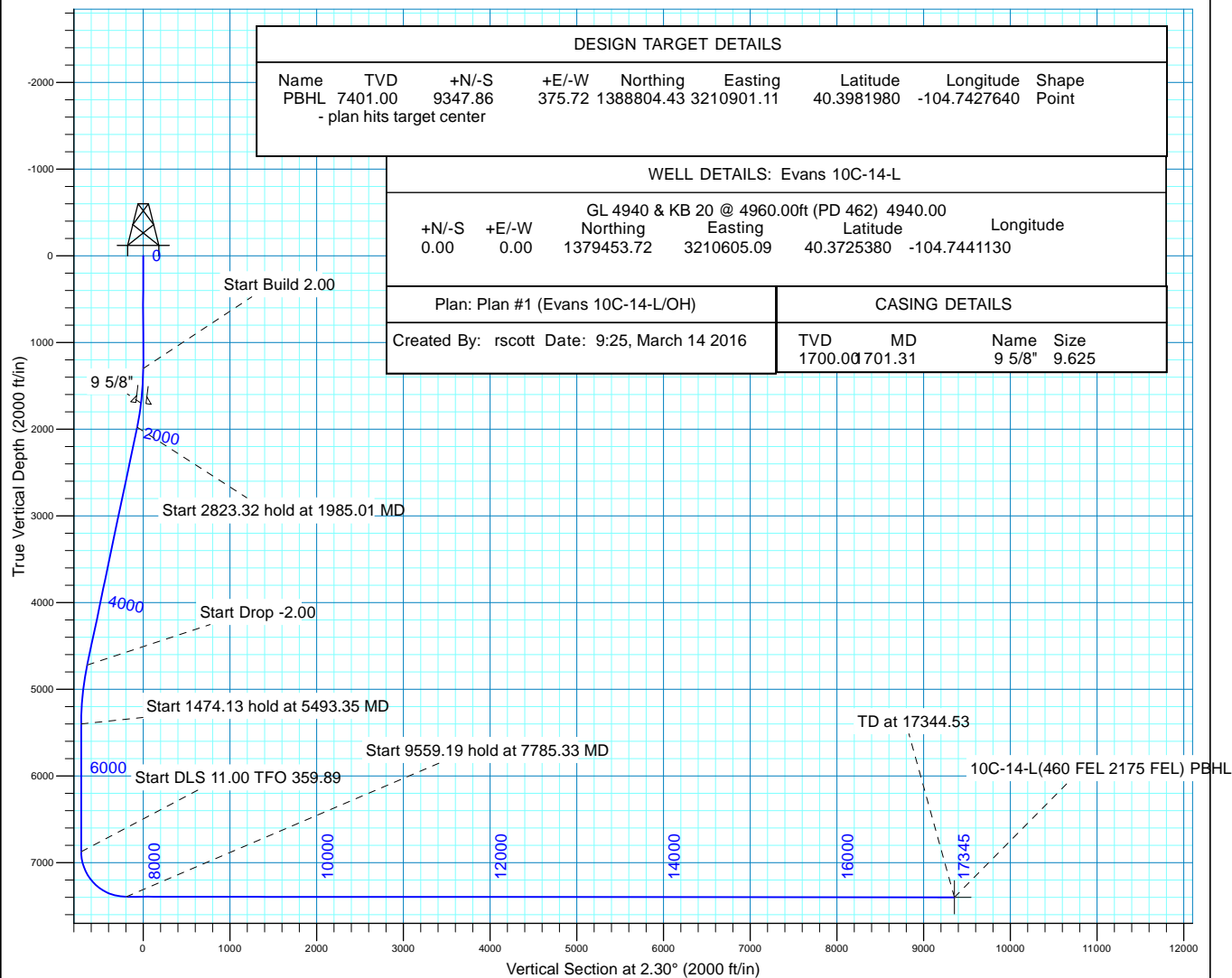
GL 4940 & KB 20 @ 4960.00ft (PD 462) 4940.00							
+N/-S	+E/-W	Northing	Easting	Latitude	Longitude		
0.00	0.00	1379453.72	3210605.09	40.3725380	-104.7441130		

Plan: Plan #1 (Evans 10C-14-L/OH)

CASING DETAILS

Created By: rscott Date: 9:25, March 14 2016

TVD	MD	Name	Size
1700.00	701.31	9 5/8"	9.625





Synergy Resources Corp.

Weld County, CO NAD 83

Evans 7-26 Pad

Evans 10C-14-L

OH

Plan: Plan #1

Standard Planning Report

14 March, 2016



Database:	Casper District	Local Co-ordinate Reference:	Well Evans 10C-14-L
Company:	Synergy Resources Corp.	TVD Reference:	GL 4940 & KB 20 @ 4960.00ft (PD 462)
Project:	Weld County, CO NAD 83	MD Reference:	GL 4940 & KB 20 @ 4960.00ft (PD 462)
Site:	Evans 7-26 Pad	North Reference:	True
Well:	Evans 10C-14-L	Survey Calculation Method:	Minimum Curvature
Wellbore:	OH		
Design:	Plan #1		

Project	Weld County, CO NAD 83		
Map System:	US State Plane 1983	System Datum:	Mean Sea Level
Geo Datum:	North American Datum 1983		
Map Zone:	Colorado Northern Zone		

Site		Evans 7-26 Pad, SECTION 26 T5N R66W			
Site Position:		Northing:	1,379,289.48 usft	Latitude:	40.3720970
From:	Lat/Long	Easting:	3,210,182.68 usft	Longitude:	-104.7456340
Position Uncertainty:	3.28 ft	Slot Radius:	13.200 in	Grid Convergence:	0.49 °

Well	Evans 10C-14-L, 1905 FNL 2575 FEL					
Well Position	+N/-S	160.65 ft	Northing:	1,379,453.72 usft	Latitude:	40.3725380
	+E/-W	423.79 ft	Easting:	3,210,605.09 usft	Longitude:	-104.7441130
Position Uncertainty		3.28 ft	Wellhead Elevation:	0.00 ft	Ground Level:	4,940.00 ft

Wellbore	OH				
Magnetics	Model Name	Sample Date	Declination (°)	Dip Angle (°)	Field Strength (nT)
	BGGM2015	3/9/2016	8.48	66.93	52,530

Design	Plan #1			
Audit Notes:				
Version:	Phase:	PLAN	Tie On Depth:	0.00
Vertical Section:	Depth From (TVD) (ft)	+N/-S (ft)	+E/-W (ft)	Direction (°)
	0.00	0.00	0.00	2.30

Plan Sections										
Measured Depth (ft)	Inclination (°)	Azimuth (°)	Vertical Depth (ft)	+N/-S (ft)	+E/-W (ft)	Dogleg Rate (°/100ft)	Build Rate (°/100ft)	Turn Rate (°/100ft)	TFO (°)	Target
0.00	0.00	0.00	0.00	0.00	0.00	0.00	0.00	0.00	0.00	
1,300.00	0.00	0.00	1,300.00	0.00	0.00	0.00	0.00	0.00	0.00	
1,985.01	13.70	151.64	1,978.50	-71.72	38.72	2.00	2.00	0.00	151.64	
4,808.34	13.70	151.64	4,721.50	-660.14	356.38	0.00	0.00	0.00	0.00	
5,493.35	0.00	0.00	5,400.00	-731.86	395.10	2.00	-2.00	0.00	180.00	
6,967.48	0.00	0.00	6,874.13	-731.86	395.10	0.00	0.00	0.00	0.00	
7,785.33	89.96	359.89	7,395.00	-211.32	394.10	11.00	11.00	-0.01	359.89	
17,344.53	89.96	359.89	7,401.00	9,347.86	375.72	0.00	0.00	0.00	0.00	10C-14-L(460 FEL 21

Database:	Casper District	Local Co-ordinate Reference:	Well Evans 10C-14-L
Company:	Synergy Resources Corp.	TVD Reference:	GL 4940 & KB 20 @ 4960.00ft (PD 462)
Project:	Weld County, CO NAD 83	MD Reference:	GL 4940 & KB 20 @ 4960.00ft (PD 462)
Site:	Evans 7-26 Pad	North Reference:	True
Well:	Evans 10C-14-L	Survey Calculation Method:	Minimum Curvature
Wellbore:	OH		
Design:	Plan #1		

Planned Survey									
Measured Depth (ft)	Inclination (°)	Azimuth (°)	Vertical Depth (ft)	+N/-S (ft)	+E/-W (ft)	Vertical Section (ft)	Dogleg Rate (°/100ft)	Build Rate (°/100ft)	Turn Rate (°/100ft)
0.00	0.00	0.00	0.00	0.00	0.00	0.00	0.00	0.00	0.00
100.00	0.00	0.00	100.00	0.00	0.00	0.00	0.00	0.00	0.00
200.00	0.00	0.00	200.00	0.00	0.00	0.00	0.00	0.00	0.00
300.00	0.00	0.00	300.00	0.00	0.00	0.00	0.00	0.00	0.00
400.00	0.00	0.00	400.00	0.00	0.00	0.00	0.00	0.00	0.00
500.00	0.00	0.00	500.00	0.00	0.00	0.00	0.00	0.00	0.00
600.00	0.00	0.00	600.00	0.00	0.00	0.00	0.00	0.00	0.00
700.00	0.00	0.00	700.00	0.00	0.00	0.00	0.00	0.00	0.00
800.00	0.00	0.00	800.00	0.00	0.00	0.00	0.00	0.00	0.00
900.00	0.00	0.00	900.00	0.00	0.00	0.00	0.00	0.00	0.00
1,000.00	0.00	0.00	1,000.00	0.00	0.00	0.00	0.00	0.00	0.00
1,100.00	0.00	0.00	1,100.00	0.00	0.00	0.00	0.00	0.00	0.00
1,200.00	0.00	0.00	1,200.00	0.00	0.00	0.00	0.00	0.00	0.00
1,300.00	0.00	0.00	1,300.00	0.00	0.00	0.00	0.00	0.00	0.00
Start Build 2.00									
1,400.00	2.00	151.64	1,399.98	-1.54	0.83	-1.50	2.00	2.00	0.00
1,500.00	4.00	151.64	1,499.84	-6.14	3.32	-6.00	2.00	2.00	0.00
1,600.00	6.00	151.64	1,599.45	-13.81	7.46	-13.50	2.00	2.00	0.00
1,700.00	8.00	151.64	1,698.70	-24.53	13.24	-23.98	2.00	2.00	0.00
1,701.31	8.03	151.64	1,700.00	-24.69	13.33	-24.14	2.00	2.00	0.00
9 5/8"									
1,800.00	10.00	151.64	1,797.47	-38.30	20.68	-37.44	2.00	2.00	0.00
1,900.00	12.00	151.64	1,895.62	-55.09	29.74	-53.85	2.00	2.00	0.00
1,985.01	13.70	151.64	1,978.50	-71.72	38.72	-70.11	2.00	2.00	0.00
Start 2823.32 hold at 1985.01 MD									
2,000.00	13.70	151.64	1,993.06	-74.85	40.41	-73.16	0.00	0.00	0.00
2,100.00	13.70	151.64	2,090.22	-95.69	51.66	-93.54	0.00	0.00	0.00
2,200.00	13.70	151.64	2,187.37	-116.53	62.91	-113.91	0.00	0.00	0.00
2,300.00	13.70	151.64	2,284.53	-137.37	74.16	-134.28	0.00	0.00	0.00
2,400.00	13.70	151.64	2,381.68	-158.21	85.41	-154.65	0.00	0.00	0.00
2,500.00	13.70	151.64	2,478.84	-179.05	96.66	-175.03	0.00	0.00	0.00
2,600.00	13.70	151.64	2,575.99	-199.89	107.91	-195.40	0.00	0.00	0.00
2,700.00	13.70	151.64	2,673.15	-220.74	119.17	-215.77	0.00	0.00	0.00
2,800.00	13.70	151.64	2,770.30	-241.58	130.42	-236.14	0.00	0.00	0.00
2,900.00	13.70	151.64	2,867.46	-262.42	141.67	-256.52	0.00	0.00	0.00
3,000.00	13.70	151.64	2,964.61	-283.26	152.92	-276.89	0.00	0.00	0.00
3,100.00	13.70	151.64	3,061.77	-304.10	164.17	-297.26	0.00	0.00	0.00
3,200.00	13.70	151.64	3,158.92	-324.94	175.42	-317.63	0.00	0.00	0.00
3,300.00	13.70	151.64	3,256.08	-345.78	186.67	-338.01	0.00	0.00	0.00
3,400.00	13.70	151.64	3,353.23	-366.62	197.92	-358.38	0.00	0.00	0.00
3,500.00	13.70	151.64	3,450.39	-387.46	209.18	-378.75	0.00	0.00	0.00
3,600.00	13.70	151.64	3,547.54	-408.31	220.43	-399.12	0.00	0.00	0.00
3,700.00	13.70	151.64	3,644.70	-429.15	231.68	-419.50	0.00	0.00	0.00
3,800.00	13.70	151.64	3,741.85	-449.99	242.93	-439.87	0.00	0.00	0.00
3,900.00	13.70	151.64	3,839.01	-470.83	254.18	-460.24	0.00	0.00	0.00
4,000.00	13.70	151.64	3,936.16	-491.67	265.43	-480.61	0.00	0.00	0.00
4,100.00	13.70	151.64	4,033.32	-512.51	276.68	-500.99	0.00	0.00	0.00
4,200.00	13.70	151.64	4,130.47	-533.35	287.93	-521.36	0.00	0.00	0.00
4,300.00	13.70	151.64	4,227.63	-554.19	299.19	-541.73	0.00	0.00	0.00
4,400.00	13.70	151.64	4,324.78	-575.03	310.44	-562.10	0.00	0.00	0.00
4,500.00	13.70	151.64	4,421.94	-595.88	321.69	-582.48	0.00	0.00	0.00
4,600.00	13.70	151.64	4,519.09	-616.72	332.94	-602.85	0.00	0.00	0.00
4,700.00	13.70	151.64	4,616.24	-637.56	344.19	-623.22	0.00	0.00	0.00

Database:	Casper District	Local Co-ordinate Reference:	Well Evans 10C-14-L
Company:	Synergy Resources Corp.	TVD Reference:	GL 4940 & KB 20 @ 4960.00ft (PD 462)
Project:	Weld County, CO NAD 83	MD Reference:	GL 4940 & KB 20 @ 4960.00ft (PD 462)
Site:	Evans 7-26 Pad	North Reference:	True
Well:	Evans 10C-14-L	Survey Calculation Method:	Minimum Curvature
Wellbore:	OH		
Design:	Plan #1		

Planned Survey									
Measured Depth (ft)	Inclination (°)	Azimuth (°)	Vertical Depth (ft)	+N/-S (ft)	+E/-W (ft)	Vertical Section (ft)	Dogleg Rate (°/100ft)	Build Rate (°/100ft)	Turn Rate (°/100ft)
4,800.00	13.70	151.64	4,713.40	-658.40	355.44	-643.59	0.00	0.00	0.00
4,808.34	13.70	151.64	4,721.50	-660.14	356.38	-645.29	0.00	0.00	0.00
Start Drop -2.00									
4,900.00	11.87	151.64	4,810.89	-677.98	366.01	-662.74	2.00	-2.00	0.00
5,000.00	9.87	151.64	4,909.09	-694.57	374.97	-678.95	2.00	-2.00	0.00
5,100.00	7.87	151.64	5,007.89	-708.13	382.29	-692.21	2.00	-2.00	0.00
5,200.00	5.87	151.64	5,107.17	-718.66	387.97	-702.49	2.00	-2.00	0.00
5,300.00	3.87	151.64	5,206.80	-726.12	392.00	-709.79	2.00	-2.00	0.00
5,400.00	1.87	151.64	5,306.67	-730.52	394.38	-714.09	2.00	-2.00	0.00
5,493.35	0.00	0.00	5,400.00	-731.86	395.10	-715.40	2.00	-2.00	0.00
Start 1474.13 hold at 5493.35 MD									
5,500.00	0.00	0.00	5,406.65	-731.86	395.10	-715.40	0.00	0.00	0.00
5,600.00	0.00	0.00	5,506.65	-731.86	395.10	-715.40	0.00	0.00	0.00
5,700.00	0.00	0.00	5,606.65	-731.86	395.10	-715.40	0.00	0.00	0.00
5,800.00	0.00	0.00	5,706.65	-731.86	395.10	-715.40	0.00	0.00	0.00
5,900.00	0.00	0.00	5,806.65	-731.86	395.10	-715.40	0.00	0.00	0.00
6,000.00	0.00	0.00	5,906.65	-731.86	395.10	-715.40	0.00	0.00	0.00
6,100.00	0.00	0.00	6,006.65	-731.86	395.10	-715.40	0.00	0.00	0.00
6,200.00	0.00	0.00	6,106.65	-731.86	395.10	-715.40	0.00	0.00	0.00
6,300.00	0.00	0.00	6,206.65	-731.86	395.10	-715.40	0.00	0.00	0.00
6,400.00	0.00	0.00	6,306.65	-731.86	395.10	-715.40	0.00	0.00	0.00
6,500.00	0.00	0.00	6,406.65	-731.86	395.10	-715.40	0.00	0.00	0.00
6,600.00	0.00	0.00	6,506.65	-731.86	395.10	-715.40	0.00	0.00	0.00
6,700.00	0.00	0.00	6,606.65	-731.86	395.10	-715.40	0.00	0.00	0.00
6,800.00	0.00	0.00	6,706.65	-731.86	395.10	-715.40	0.00	0.00	0.00
6,900.00	0.00	0.00	6,806.65	-731.86	395.10	-715.40	0.00	0.00	0.00
6,967.48	0.00	0.00	6,874.13	-731.86	395.10	-715.40	0.00	0.00	0.00
Start DLS 11.00 TFO 359.89									
7,000.00	3.58	359.89	6,906.63	-730.84	395.10	-714.39	11.00	11.00	0.00
7,100.00	14.58	359.89	7,005.23	-715.09	395.07	-698.65	11.00	11.00	0.00
7,200.00	25.58	359.89	7,099.01	-680.82	395.00	-664.40	11.00	11.00	0.00
7,300.00	36.58	359.89	7,184.52	-629.28	394.90	-612.91	11.00	11.00	0.00
7,400.00	47.58	359.89	7,258.63	-562.36	394.77	-546.06	11.00	11.00	0.00
7,500.00	58.58	359.89	7,318.61	-482.54	394.62	-466.30	11.00	11.00	0.00
7,600.00	69.58	359.89	7,362.26	-392.74	394.45	-376.58	11.00	11.00	0.00
7,700.00	80.58	359.89	7,387.97	-296.26	394.26	-280.19	11.00	11.00	0.00
7,785.33	89.96	359.89	7,395.00	-211.32	394.10	-195.32	11.00	11.00	0.00
Start 9559.19 hold at 7785.33 MD									
7,800.00	89.96	359.89	7,395.01	-196.65	394.07	-180.66	0.00	0.00	0.00
7,900.00	89.96	359.89	7,395.07	-96.65	393.88	-80.75	0.00	0.00	0.00
8,000.00	89.96	359.89	7,395.14	3.35	393.69	19.16	0.00	0.00	0.00
8,100.00	89.96	359.89	7,395.20	103.35	393.49	119.07	0.00	0.00	0.00
8,200.00	89.96	359.89	7,395.26	203.35	393.30	218.98	0.00	0.00	0.00
8,300.00	89.96	359.89	7,395.32	303.35	393.11	318.89	0.00	0.00	0.00
8,400.00	89.96	359.89	7,395.39	403.35	392.92	418.80	0.00	0.00	0.00
8,500.00	89.96	359.89	7,395.45	503.35	392.73	518.72	0.00	0.00	0.00
8,600.00	89.96	359.89	7,395.51	603.35	392.53	618.63	0.00	0.00	0.00
8,700.00	89.96	359.89	7,395.57	703.35	392.34	718.54	0.00	0.00	0.00
8,800.00	89.96	359.89	7,395.64	803.35	392.15	818.45	0.00	0.00	0.00
8,900.00	89.96	359.89	7,395.70	903.35	391.96	918.36	0.00	0.00	0.00
9,000.00	89.96	359.89	7,395.76	1,003.35	391.76	1,018.27	0.00	0.00	0.00
9,100.00	89.96	359.89	7,395.83	1,103.35	391.57	1,118.18	0.00	0.00	0.00
9,200.00	89.96	359.89	7,395.89	1,203.35	391.38	1,218.10	0.00	0.00	0.00
9,300.00	89.96	359.89	7,395.95	1,303.35	391.19	1,318.01	0.00	0.00	0.00

Database:	Casper District	Local Co-ordinate Reference:	Well Evans 10C-14-L
Company:	Synergy Resources Corp.	TVD Reference:	GL 4940 & KB 20 @ 4960.00ft (PD 462)
Project:	Weld County, CO NAD 83	MD Reference:	GL 4940 & KB 20 @ 4960.00ft (PD 462)
Site:	Evans 7-26 Pad	North Reference:	True
Well:	Evans 10C-14-L	Survey Calculation Method:	Minimum Curvature
Wellbore:	OH		
Design:	Plan #1		

Planned Survey									
Measured Depth (ft)	Inclination (°)	Azimuth (°)	Vertical Depth (ft)	+N/-S (ft)	+E/-W (ft)	Vertical Section (ft)	Dogleg Rate (°/100ft)	Build Rate (°/100ft)	Turn Rate (°/100ft)
9,400.00	89.96	359.89	7,396.01	1,403.35	390.99	1,417.92	0.00	0.00	0.00
9,500.00	89.96	359.89	7,396.08	1,503.35	390.80	1,517.83	0.00	0.00	0.00
9,600.00	89.96	359.89	7,396.14	1,603.35	390.61	1,617.74	0.00	0.00	0.00
9,700.00	89.96	359.89	7,396.20	1,703.35	390.42	1,717.65	0.00	0.00	0.00
9,800.00	89.96	359.89	7,396.27	1,803.35	390.23	1,817.56	0.00	0.00	0.00
9,900.00	89.96	359.89	7,396.33	1,903.35	390.03	1,917.48	0.00	0.00	0.00
10,000.00	89.96	359.89	7,396.39	2,003.35	389.84	2,017.39	0.00	0.00	0.00
10,100.00	89.96	359.89	7,396.45	2,103.35	389.65	2,117.30	0.00	0.00	0.00
10,200.00	89.96	359.89	7,396.52	2,203.35	389.46	2,217.21	0.00	0.00	0.00
10,300.00	89.96	359.89	7,396.58	2,303.35	389.26	2,317.12	0.00	0.00	0.00
10,400.00	89.96	359.89	7,396.64	2,403.35	389.07	2,417.03	0.00	0.00	0.00
10,500.00	89.96	359.89	7,396.70	2,503.35	388.88	2,516.94	0.00	0.00	0.00
10,600.00	89.96	359.89	7,396.77	2,603.35	388.69	2,616.86	0.00	0.00	0.00
10,700.00	89.96	359.89	7,396.83	2,703.35	388.50	2,716.77	0.00	0.00	0.00
10,800.00	89.96	359.89	7,396.89	2,803.35	388.30	2,816.68	0.00	0.00	0.00
10,900.00	89.96	359.89	7,396.96	2,903.34	388.11	2,916.59	0.00	0.00	0.00
11,000.00	89.96	359.89	7,397.02	3,003.34	387.92	3,016.50	0.00	0.00	0.00
11,100.00	89.96	359.89	7,397.08	3,103.34	387.73	3,116.41	0.00	0.00	0.00
11,200.00	89.96	359.89	7,397.14	3,203.34	387.53	3,216.32	0.00	0.00	0.00
11,300.00	89.96	359.89	7,397.21	3,303.34	387.34	3,316.23	0.00	0.00	0.00
11,400.00	89.96	359.89	7,397.27	3,403.34	387.15	3,416.15	0.00	0.00	0.00
11,500.00	89.96	359.89	7,397.33	3,503.34	386.96	3,516.06	0.00	0.00	0.00
11,600.00	89.96	359.89	7,397.39	3,603.34	386.77	3,615.97	0.00	0.00	0.00
11,700.00	89.96	359.89	7,397.46	3,703.34	386.57	3,715.88	0.00	0.00	0.00
11,800.00	89.96	359.89	7,397.52	3,803.34	386.38	3,815.79	0.00	0.00	0.00
11,900.00	89.96	359.89	7,397.58	3,903.34	386.19	3,915.70	0.00	0.00	0.00
12,000.00	89.96	359.89	7,397.65	4,003.34	386.00	4,015.61	0.00	0.00	0.00
12,100.00	89.96	359.89	7,397.71	4,103.34	385.80	4,115.53	0.00	0.00	0.00
12,200.00	89.96	359.89	7,397.77	4,203.34	385.61	4,215.44	0.00	0.00	0.00
12,300.00	89.96	359.89	7,397.83	4,303.34	385.42	4,315.35	0.00	0.00	0.00
12,400.00	89.96	359.89	7,397.90	4,403.34	385.23	4,415.26	0.00	0.00	0.00
12,500.00	89.96	359.89	7,397.96	4,503.34	385.04	4,515.17	0.00	0.00	0.00
12,600.00	89.96	359.89	7,398.02	4,603.34	384.84	4,615.08	0.00	0.00	0.00
12,700.00	89.96	359.89	7,398.09	4,703.34	384.65	4,714.99	0.00	0.00	0.00
12,800.00	89.96	359.89	7,398.15	4,803.34	384.46	4,814.91	0.00	0.00	0.00
12,900.00	89.96	359.89	7,398.21	4,903.34	384.27	4,914.82	0.00	0.00	0.00
13,000.00	89.96	359.89	7,398.27	5,003.34	384.07	5,014.73	0.00	0.00	0.00
13,100.00	89.96	359.89	7,398.34	5,103.34	383.88	5,114.64	0.00	0.00	0.00
13,200.00	89.96	359.89	7,398.40	5,203.34	383.69	5,214.55	0.00	0.00	0.00
13,300.00	89.96	359.89	7,398.46	5,303.34	383.50	5,314.46	0.00	0.00	0.00
13,400.00	89.96	359.89	7,398.52	5,403.34	383.30	5,414.37	0.00	0.00	0.00
13,500.00	89.96	359.89	7,398.59	5,503.34	383.11	5,514.29	0.00	0.00	0.00
13,600.00	89.96	359.89	7,398.65	5,603.34	382.92	5,614.20	0.00	0.00	0.00
13,700.00	89.96	359.89	7,398.71	5,703.34	382.73	5,714.11	0.00	0.00	0.00
13,800.00	89.96	359.89	7,398.78	5,803.34	382.54	5,814.02	0.00	0.00	0.00
13,900.00	89.96	359.89	7,398.84	5,903.34	382.34	5,913.93	0.00	0.00	0.00
14,000.00	89.96	359.89	7,398.90	6,003.34	382.15	6,013.84	0.00	0.00	0.00
14,100.00	89.96	359.89	7,398.96	6,103.34	381.96	6,113.75	0.00	0.00	0.00
14,200.00	89.96	359.89	7,399.03	6,203.34	381.77	6,213.67	0.00	0.00	0.00
14,300.00	89.96	359.89	7,399.09	6,303.34	381.57	6,313.58	0.00	0.00	0.00
14,400.00	89.96	359.89	7,399.15	6,403.34	381.38	6,413.49	0.00	0.00	0.00
14,500.00	89.96	359.89	7,399.21	6,503.34	381.19	6,513.40	0.00	0.00	0.00
14,600.00	89.96	359.89	7,399.28	6,603.34	381.00	6,613.31	0.00	0.00	0.00
14,700.00	89.96	359.89	7,399.34	6,703.34	380.81	6,713.22	0.00	0.00	0.00

Database:	Casper District	Local Co-ordinate Reference:	Well Evans 10C-14-L
Company:	Synergy Resources Corp.	TVD Reference:	GL 4940 & KB 20 @ 4960.00ft (PD 462)
Project:	Weld County, CO NAD 83	MD Reference:	GL 4940 & KB 20 @ 4960.00ft (PD 462)
Site:	Evans 7-26 Pad	North Reference:	True
Well:	Evans 10C-14-L	Survey Calculation Method:	Minimum Curvature
Wellbore:	OH		
Design:	Plan #1		

Planned Survey									
Measured Depth (ft)	Inclination (°)	Azimuth (°)	Vertical Depth (ft)	+N/-S (ft)	+E/-W (ft)	Vertical Section (ft)	Dogleg Rate (°/100ft)	Build Rate (°/100ft)	Turn Rate (°/100ft)
14,800.00	89.96	359.89	7,399.40	6,803.34	380.61	6,813.13	0.00	0.00	0.00
14,900.00	89.96	359.89	7,399.47	6,903.34	380.42	6,913.05	0.00	0.00	0.00
15,000.00	89.96	359.89	7,399.53	7,003.34	380.23	7,012.96	0.00	0.00	0.00
15,100.00	89.96	359.89	7,399.59	7,103.34	380.04	7,112.87	0.00	0.00	0.00
15,200.00	89.96	359.89	7,399.65	7,203.34	379.84	7,212.78	0.00	0.00	0.00
15,300.00	89.96	359.89	7,399.72	7,303.34	379.65	7,312.69	0.00	0.00	0.00
15,400.00	89.96	359.89	7,399.78	7,403.34	379.46	7,412.60	0.00	0.00	0.00
15,500.00	89.96	359.89	7,399.84	7,503.34	379.27	7,512.51	0.00	0.00	0.00
15,600.00	89.96	359.89	7,399.91	7,603.34	379.08	7,612.43	0.00	0.00	0.00
15,700.00	89.96	359.89	7,399.97	7,703.34	378.88	7,712.34	0.00	0.00	0.00
15,800.00	89.96	359.89	7,400.03	7,803.33	378.69	7,812.25	0.00	0.00	0.00
15,900.00	89.96	359.89	7,400.09	7,903.33	378.50	7,912.16	0.00	0.00	0.00
16,000.00	89.96	359.89	7,400.16	8,003.33	378.31	8,012.07	0.00	0.00	0.00
16,100.00	89.96	359.89	7,400.22	8,103.33	378.11	8,111.98	0.00	0.00	0.00
16,200.00	89.96	359.89	7,400.28	8,203.33	377.92	8,211.89	0.00	0.00	0.00
16,300.00	89.96	359.89	7,400.34	8,303.33	377.73	8,311.80	0.00	0.00	0.00
16,400.00	89.96	359.89	7,400.41	8,403.33	377.54	8,411.72	0.00	0.00	0.00
16,500.00	89.96	359.89	7,400.47	8,503.33	377.34	8,511.63	0.00	0.00	0.00
16,600.00	89.96	359.89	7,400.53	8,603.33	377.15	8,611.54	0.00	0.00	0.00
16,700.00	89.96	359.89	7,400.60	8,703.33	376.96	8,711.45	0.00	0.00	0.00
16,800.00	89.96	359.89	7,400.66	8,803.33	376.77	8,811.36	0.00	0.00	0.00
16,900.00	89.96	359.89	7,400.72	8,903.33	376.58	8,911.27	0.00	0.00	0.00
17,000.00	89.96	359.89	7,400.78	9,003.33	376.38	9,011.18	0.00	0.00	0.00
17,100.00	89.96	359.89	7,400.85	9,103.33	376.19	9,111.10	0.00	0.00	0.00
17,200.00	89.96	359.89	7,400.91	9,203.33	376.00	9,211.01	0.00	0.00	0.00
17,300.00	89.96	359.89	7,400.97	9,303.33	375.81	9,310.92	0.00	0.00	0.00
17,344.53	89.96	359.89	7,401.00	9,347.86	375.72	9,355.41	0.00	0.00	0.00
TD at 17344.53 - 10C-14-L(460 FEL 2175 FEL) PBHL									

Design Targets									
Target Name	Dip Angle (°)	Dip Dir. (°)	TVD (ft)	+N/-S (ft)	+E/-W (ft)	Northing (usft)	Easting (usft)	Latitude	Longitude
10C-14-L(460 FEL 2175 - hit/miss target - Shape - plan hits target center - Point	0.00	0.00	7,401.00	9,347.86	375.72	1,388,804.43	3,210,901.11	40.3981980	-104.7427640

Casing Points					
Measured Depth (ft)	Vertical Depth (ft)	Name	Casing Diameter (in)	Hole Diameter (in)	
1,701.31	1,700.00	9 5/8"	9.625	13.500	

Database:	Casper District	Local Co-ordinate Reference:	Well Evans 10C-14-L
Company:	Synergy Resources Corp.	TVD Reference:	GL 4940 & KB 20 @ 4960.00ft (PD 462)
Project:	Weld County, CO NAD 83	MD Reference:	GL 4940 & KB 20 @ 4960.00ft (PD 462)
Site:	Evans 7-26 Pad	North Reference:	True
Well:	Evans 10C-14-L	Survey Calculation Method:	Minimum Curvature
Wellbore:	OH		
Design:	Plan #1		

Plan Annotations				
Measured Depth (ft)	Vertical Depth (ft)	Local Coordinates		Comment
		+N/-S (ft)	+E/-W (ft)	
1,300.00	1,300.00	0.00	0.00	Start Build 2.00
1,985.01	1,978.50	-71.72	38.72	Start 2823.32 hold at 1985.01 MD
4,808.34	4,721.50	-660.14	356.38	Start Drop -2.00
5,493.35	5,400.00	-731.86	395.10	Start 1474.13 hold at 5493.35 MD
6,967.48	6,874.13	-731.86	395.10	Start DLS 11.00 TFO 359.89
7,785.33	7,395.00	-211.32	394.10	Start 9559.19 hold at 7785.33 MD
17,344.53	7,401.00	9,347.86	375.72	TD at 17344.53