



Kerr-McGee Oil & Gas Onshore LP

A subsidiary of Anadarko Petroleum Corporation

1099 18th Street
Denver, CO 80202
720-929-6000

March 1, 2016

Matt Lepore
Director, Colorado Oil and Gas Conservation Commission
Department of Natural Resources
The Chancery Building
1120 Lincoln Street, Suite 801
Denver, CO 80203

Re: **30 Day Certification Letter - 318A.e**
HILGERS 12N-22HZ (Doc No. 400927216)
Township 3 North, Range 68 West
Section 22: NESE
Unit Acreage: 200 acres
Unit Spacing: 3N 68W Sec 22: N2S2
3N 68W Sec 23: NWSW
Weld County, Colorado

Dear Director Lepore:

Kerr-McGee Oil and Gas Onshore LP ("KMG") hereby certifies that a thirty (30) day notice has been given by certified mail to all mineral owners in the proposed wellbore spacing unit. We have not received any objections to such well location, proposed spacing unit, or additional producing formation. KMG hereby respectfully requests approval of this boundary well.

If you have any questions or issues regarding this permit, please contact our office.

Sincerely,

Kerr-McGee Oil and Gas Onshore LP

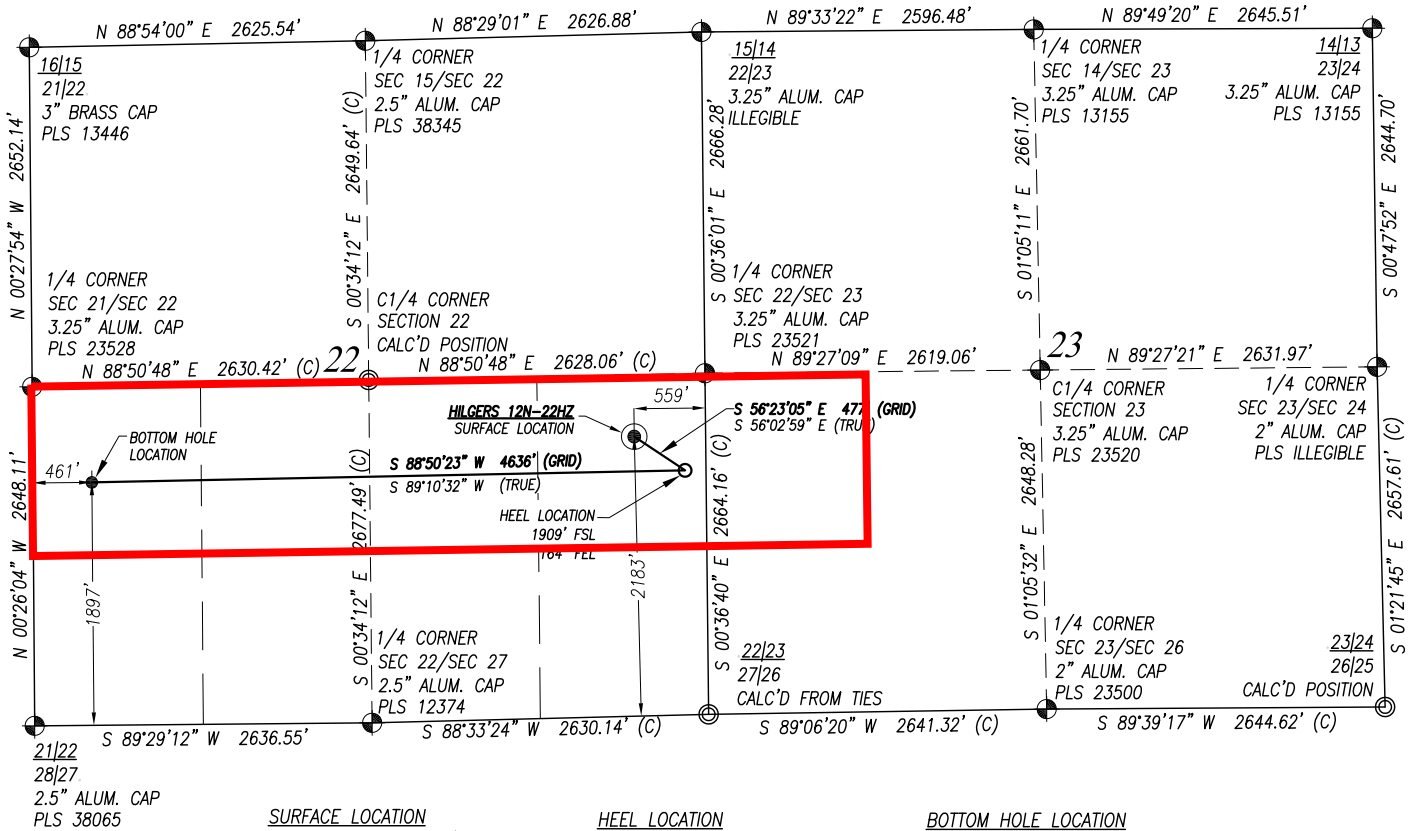
A handwritten signature in blue ink that reads 'RPowers'.

Ronett Powers
Regulatory Analyst II

Enclosure

WELL LOCATION CERTIFICATE: HILGERS 12N-22HZ

SECTION 22, TOWNSHIP 3 NORTH, RANGE 68 WEST, 6TH P.M.



SURFACE LOCATION
GROUND ELEVATION=4997'

NAD 83
LATITUDE= 40.210256°
LONGITUDE= -104.981563°

LATITUDE= 40°12'36.921"
LONGITUDE= -104°58'53.627"

HEEL LOCATION

NAD 83
LATITUDE= 40.209524°
LONGITUDE= -104.980146°

LATITUDE= 40°12'34.287"
LONGITUDE= -104°58'48.525"

BOTTOM HOLE LOCATION

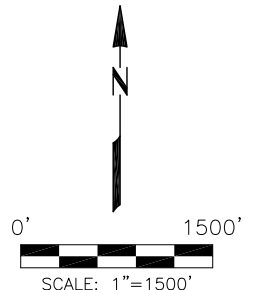
NAD 83
LATITUDE= 40.209340°
LONGITUDE= -104.996743°

LATITUDE= 40°12'33.624"
LONGITUDE= -104°59'48.275"

SURVEYOR'S CERTIFICATION:

I, Mark A. Hall, a licensed professional land surveyor in the state of Colorado do hereby certify to KERR-MCGEE OIL & GAS ONSHORE LP that the survey and well location certificate shown hereon were done by me or under my direct supervision and that the drawing shown hereon accurately depicts the proposed location of the well. this certificate does not represent a land survey plat or improvement survey plat as defined by c.r.s. 38-51-102 and cannot be relied upon to determine ownership.

Mark A. Hall, PLS #36073
FOR AND ON BEHALF OF ACKLAM, INC.
195 Telluride Street Suite 7
Brighton CO 80601



NOTES:

- Found Section Corner
- Calculated Section Corner
- Basis of Elevations: NAVD88 (GEOID12).
- Basis of Bearings: Colorado coordinate system 1983 north zone ("GRID").
- Basis of Distances: GRID; Combined Factor=0.999719068.
- GPS Operator: **Jeff Hawkins** PDOP 1.3
- See attachments for existing improvements within 500 feet of the well pad.
- Well footages are measured at right angles to the section lines.
- The Bottom Hole Location bears **S 85°10'15" W 4253'** from the Surface Location.

NOTICE: According to Colorado law you must commence any legal action based upon any defect in this survey within three years after you first discover such defect. In no event may any action based upon any defect in this survey be commenced more than ten years from the date of the certification shown hereon.

PREPARED FOR:

KerrMcGee
Kerr-McGee Oil & Gas Onshore L.P.
1099 18th Street
Denver, Colorado 80202

Acklam, Inc.

DATE SURVEYED: 06/29/2015

DATE DRAFTED: 11/02/2015

DRAFTED BY: SMF CHK BY: JAM

JOB No. 155004 REVISED:

WELL LOCATION CERTIFICATE

HILGERS 12N-22HZ

SURFACE 2183' FSL 559' FEL
GROUND ELEVATION=4997'

HEEL 1909' FSL 164' FEL
BOTTOM HOLE 1897' FSL 461' FWL

NE1/4 SE1/4
SECTION 22, T3N, R68W, 6TH PM
WELD COUNTY, COLORADO