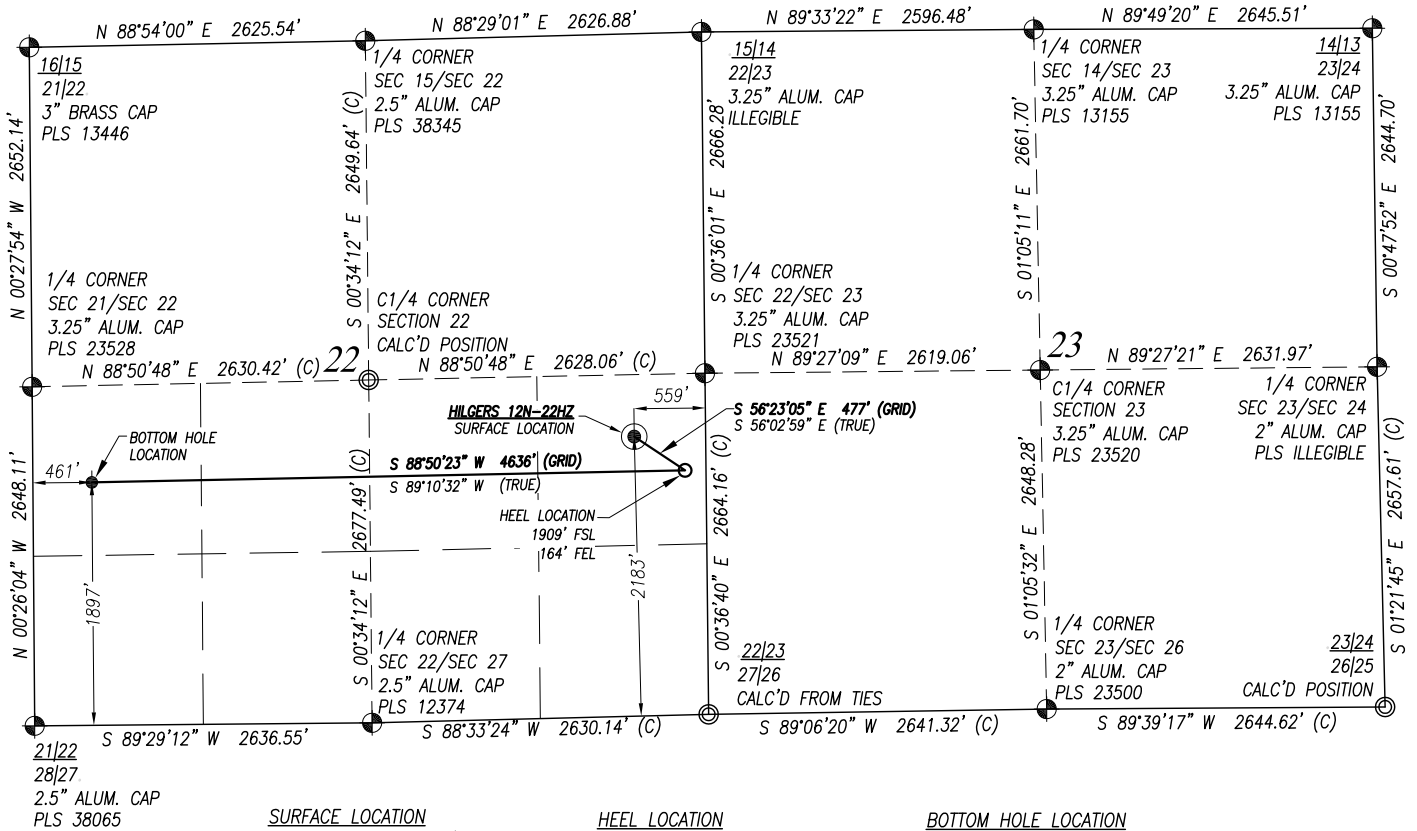


# WELL LOCATION CERTIFICATE: HILGERS 12N-22HZ

## SECTION 22, TOWNSHIP 3 NORTH, RANGE 68 WEST, 6TH P.M.



**SURFACE LOCATION**  
GROUND ELEVATION=4997'

NAD 83  
LATITUDE= 40.210256°  
LONGITUDE= -104.981563°  
  
LATITUDE= 40°12'36.921"  
LONGITUDE= -104°58'53.627"

**HEEL LOCATION**

NAD 83  
LATITUDE= 40.209524°  
LONGITUDE= -104.980146°  
  
LATITUDE= 40°12'34.287"  
LONGITUDE= -104°58'48.525"

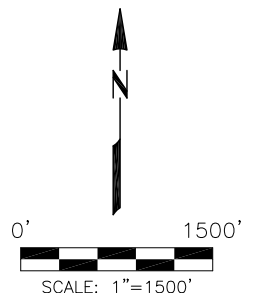
**BOTTOM HOLE LOCATION**

NAD 83  
LATITUDE= 40.209340°  
LONGITUDE= -104.996743°  
  
LATITUDE= 40°12'33.624"  
LONGITUDE= -104°59'48.275"

### SURVEYOR'S CERTIFICATION:

I, Mark A. Hall, a licensed professional land surveyor in the state of Colorado do hereby certify to **KERR-MCGEE OIL & GAS ONSHORE LP** that the survey and well location certificate shown hereon were done by me or under my direct supervision and that the drawing shown hereon accurately depicts the proposed location of the well. this certificate does not represent a land survey plat or improvement survey plat as defined by c.r.s. 38-51-102 and cannot be relied upon to determine ownership.

Mark A. Hall, PLS #36073  
FOR AND ON BEHALF OF ACKLAM, INC.  
195 Telluride Street Suite 7  
Brighton CO 80601



### NOTES:

- Found Section Corner
- Calculated Section Corner
- Basis of Elevations: NAVD88 (GEOID12).
- Basis of Bearings: Colorado coordinate system 1983 north zone ("GRID").
- Basis of Distances: GRID; Combined Factor=0.999719068.
- GPS Operator: **Jeff Hawkins** PDOP 1.3
- See attachments for existing improvements within 500 feet of the well pad.
- Well footages are measured at right angles to the section lines.
- The Bottom Hole Location bears **S 85°10'15" W 4253'** from the Surface Location.

NOTICE: According to Colorado law you must commence any legal action based upon any defect in this survey within three years after you first discover such defect. In no event may any action based upon any defect in this survey be commenced more than ten years from the date of the certification shown hereon.

PREPARED FOR:

**KerrMcGee**  
**Kerr-McGee Oil & Gas Onshore L.P.**  
1099 18th Street  
Denver, Colorado 80202

**Acklam, Inc.**

DATE SURVEYED: 06/29/2015

DATE DRAFTED: 11/02/2015

DRAFTED BY: SMF CHK BY: JAM

JOB No. 155004 REVISED:

### WELL LOCATION CERTIFICATE

#### HILGERS 12N-22HZ

SURFACE 2183' FSL 559' FEL  
GROUND ELEVATION=4997'

HEEL 1909' FSL 164' FEL  
BOTTOM HOLE 1897' FSL 461' FWL

NE1/4 SE1/4  
SECTION 22, T3N, R68W, 6TH PM  
WELD COUNTY, COLORADO