



CEMENT BOND LOG GAMMA RAY / CCL

Company	GREAT WESTERN OPERATING			Country	U.S.A.		
Well	GREAT WESTERN 26-51						
Field	WATTENBERG						
County	WELD						
State	COLORADO						
Company GREAT WESTERN OPERATING COMPANY LLC				Well GREAT WESTERN 26-51			
Field WATTENBERG				County WELD			
State COLORADO				Country U.S.A.			
Location:				API # : 05-123-24361			
SEC 26 TWP 6N RGE 67W				Other Services NONE			
Permanent Datum G.L.				Elevation			
Log Measured From K.B.				K.B. 4775'			
Drilling Measured From K.B.				D.F. 4774'			
				G.L. 4759'			
Date	01-25-2016						
Run Number	ONE						
Depth Driller	7285'						
Depth Logger	1615'						
Bottom Logged Interval	1600'						
Top Log Interval	SURFACE						
Open Hole Size	N/A						
Type Fluid	WATER						
Density / Viscosity	N/A						
Max. Recorded Temp.	N/A						
Estimated Cement Top	1300'						
Time Well Ready	7:00AM						
Time Logger on Bottom	8:00AM						
Equipment Number	41						
location	JOHNSTOWN						
Recorded By	WILLIAMS						
Witnessed By	MR. BRINAR						
Borehole Record				Tubing Record			
Run Number	Bit	From	To	Size	Weight	From	To
Casing Record	Size		Wgt/Ft		Top		Bottom
Surface String							
Prot. String							
Production String							
Liner							

<<< Fold Here >>>

All interpretations are opinions based on inferences from electrical or other measurements and we cannot and do not guarantee the accuracy or correctness of any interpretation, and we shall not, except in the case of gross or willful negligence on our part, be liable or responsible for any loss, costs, damages, or expenses incurred or sustained by anyone resulting from any interpretation made by any of our officers, agents or employees. These interpretations are also subject to our general terms and conditions set out in our current Price Schedule.

Comments

NOTE: THIS LOG WAS NOT CORRELATED TO ANY OTHER LOG

MAIN PASS: 5" = 100'
CSG PSI: 800 PSI

Calibration Report

Database File: 01252016_greatwestern26-51.db
Dataset Pathname: main/pass1
Dataset Creation: Mon Jan 25 08:13:01 2016 by Log Std Casedhole 10081

Serial Number:	080222	
Tool Model:	Probe	
Performed:	Sun Jun 13 13:33:21 1993	
Calibrator Value:	1.0	GAPI
Background Reading:	0.0	cps
Calibrator Reading:	1.0	cps
Sensitivity:	1.0000	GAPI/cps

Cement Bond Log Calibration Report

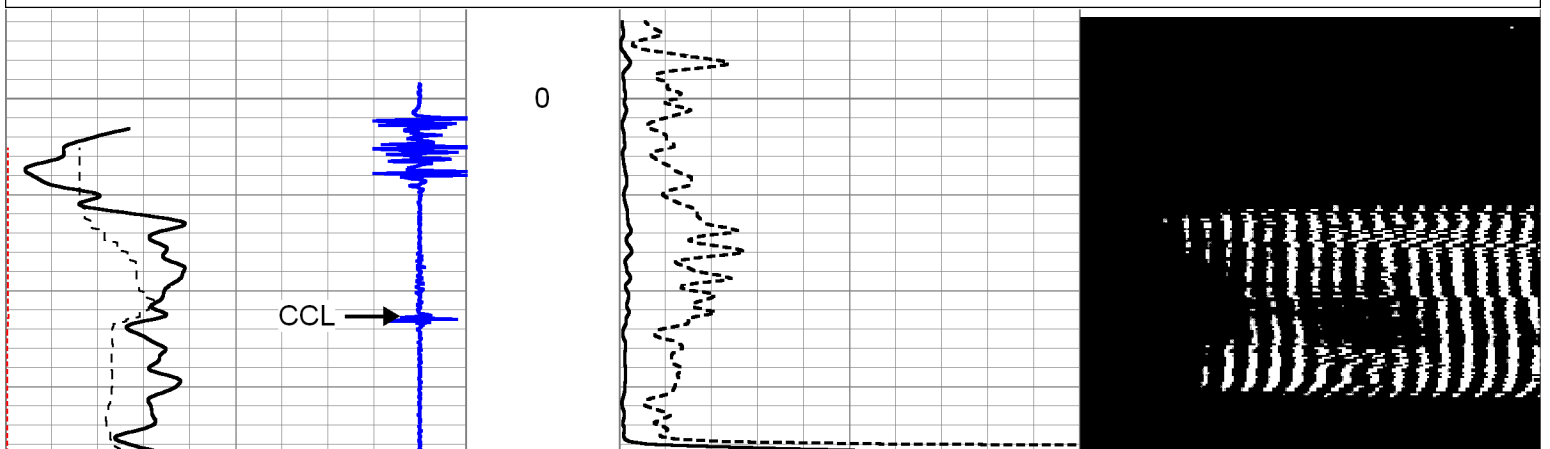
Serial Number:	080430		
Tool Model:	Digital		
Performed:	Thu Nov 19 10:21:11 2015		
Depth:	0	ft	
Casing Diameter:	5.5	in	
	3' Spacing	5' Spacing	
Signal Zero:	1	1	mV
Calibrated Amplitude:	71.921	71.921	mV
Reading at Signal Zero:	0.0104736	0.00456543	V
Reading in Free Pipe:	0.516333	0.479614	V
Gain:	140.199	149.292	
Offset:	-0.468393	0.318418	

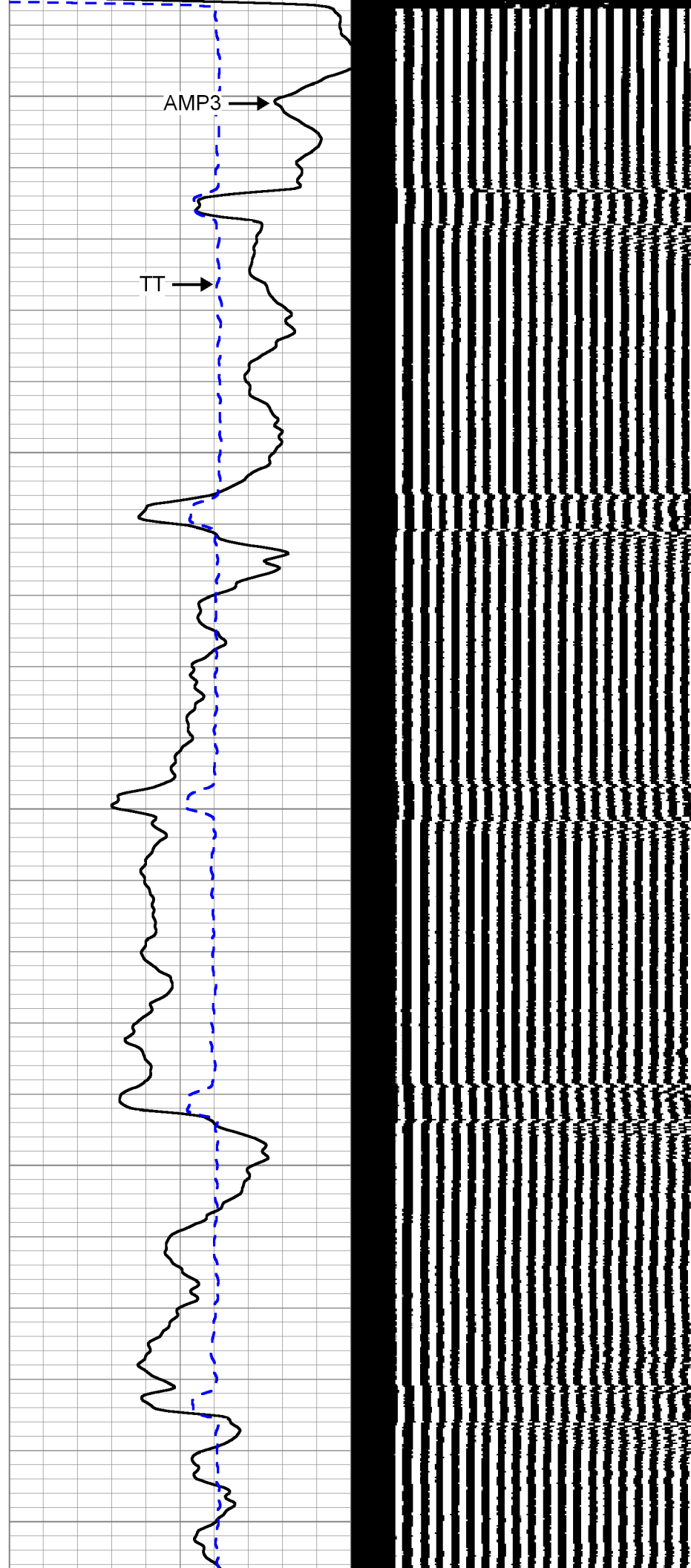
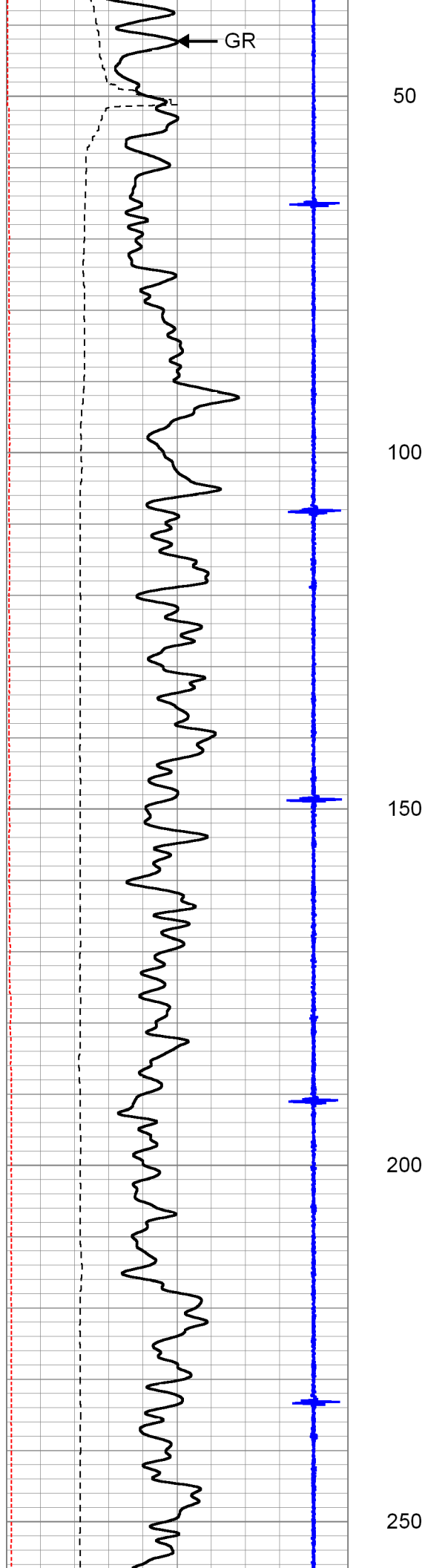


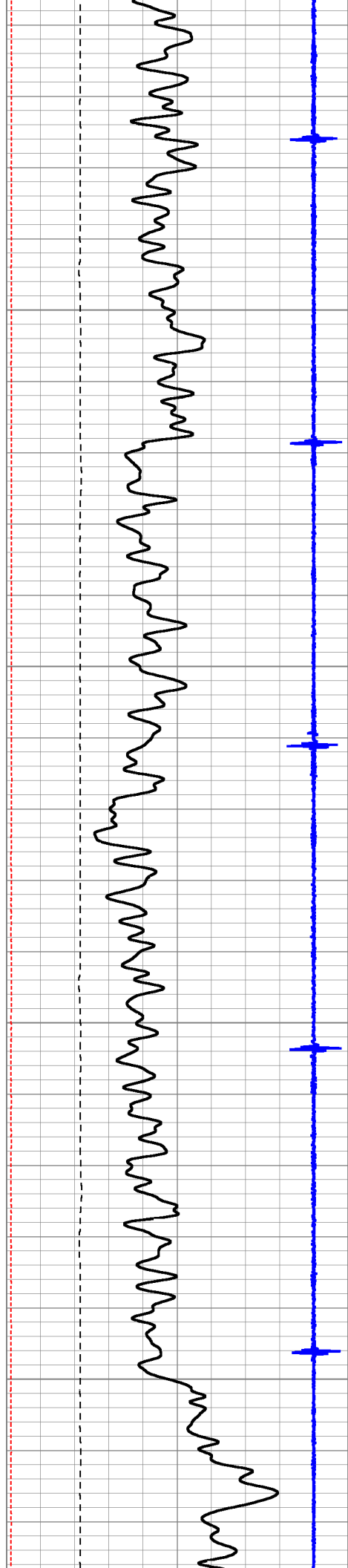
MAIN PASS 800PSI

Database File:	01252016_greatwestern26-51.db
Dataset Pathname:	main/merge1
Presentation Format:	cblww
Dataset Creation:	Mon Jan 25 08:54:29 2016
Charted by:	Depth in Feet scaled 1:240

90	Collar Locator	-10	0	Amplified Amplitude (mV)	10	200	Variable Density	1200
0	Gamma Ray (GAPI)	150	0	Amplitude (mV)	100			
-100	Line Speed (ft/min)	100	282	Travel Time (usec)	182			
0	LTEN (lb)	5000						





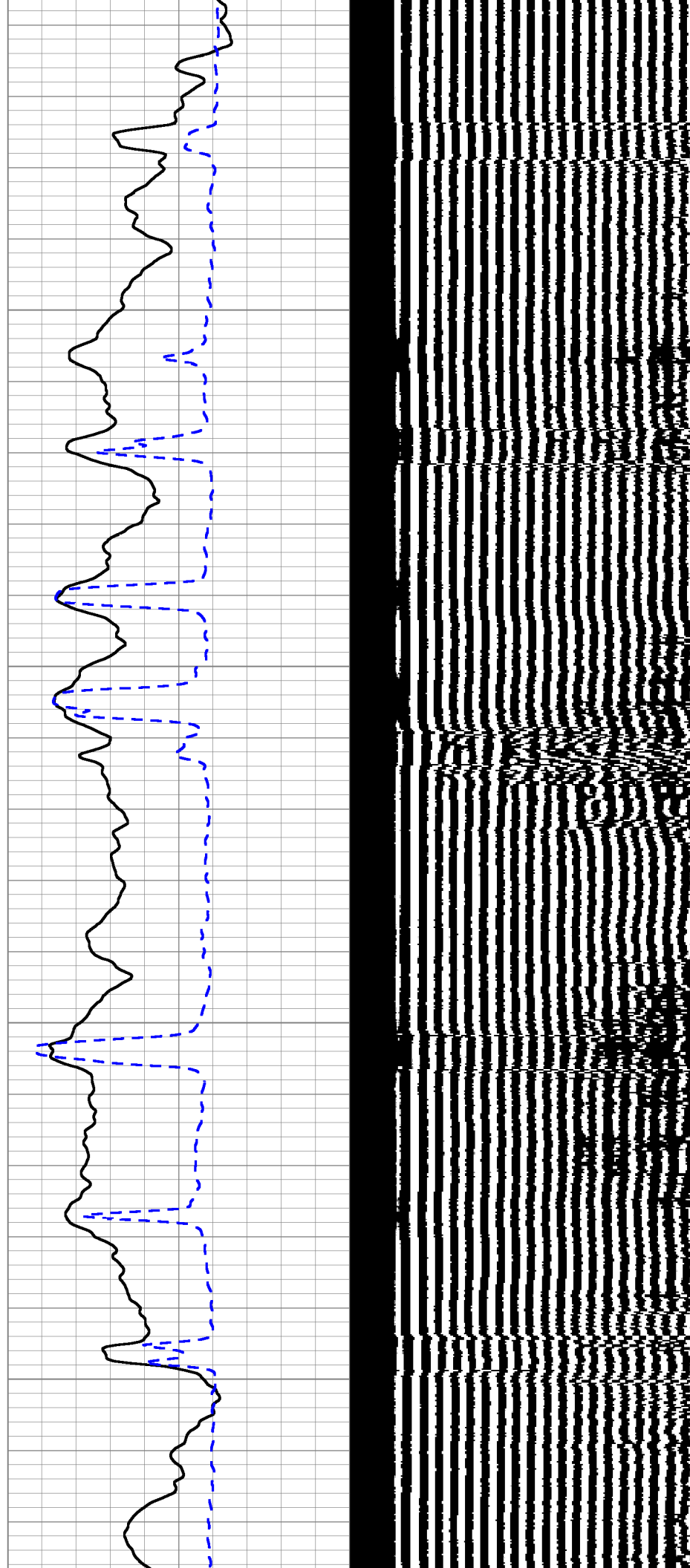


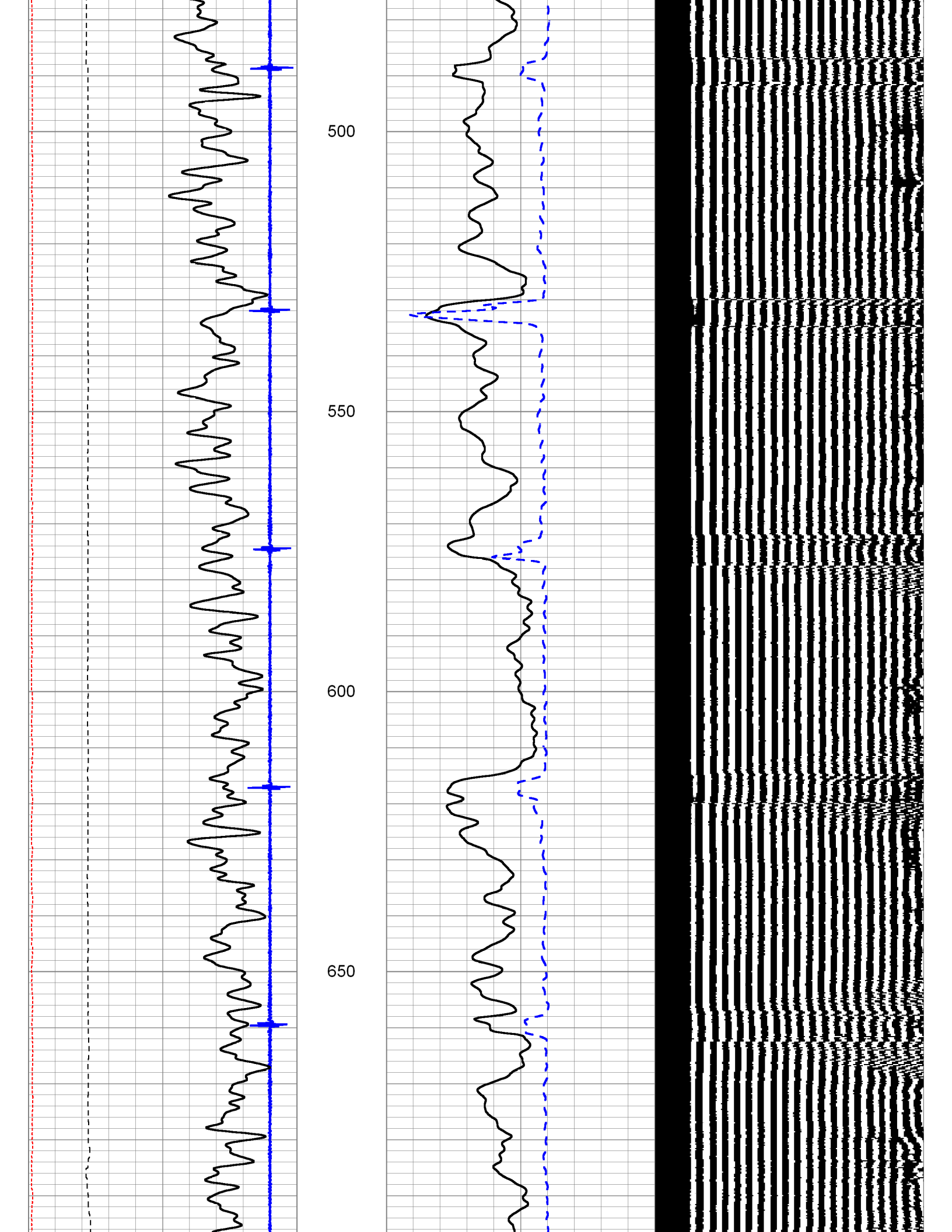
300

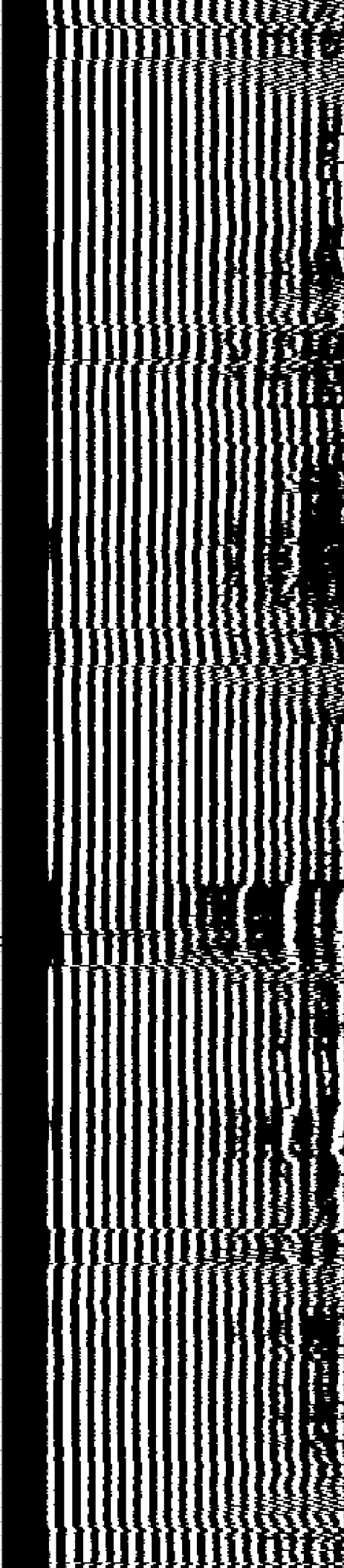
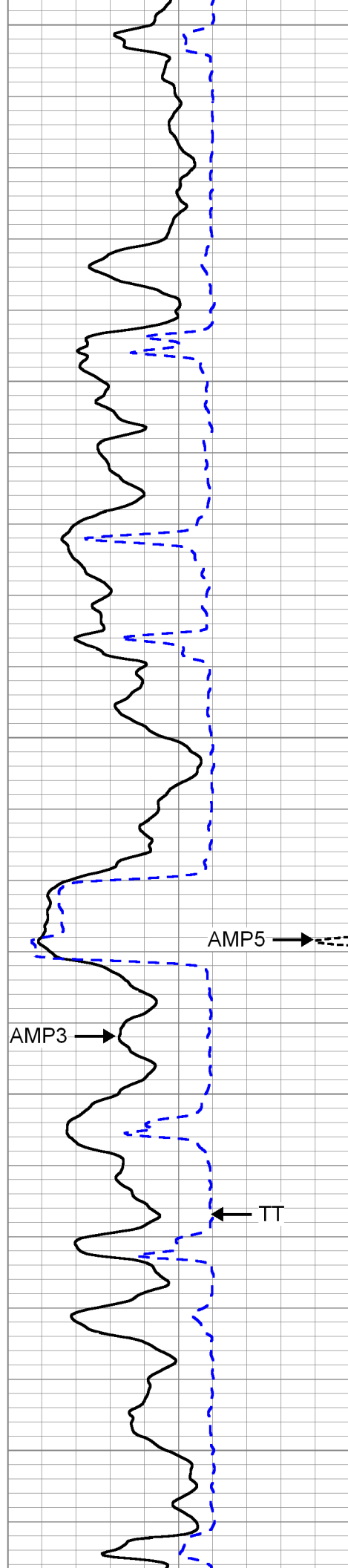
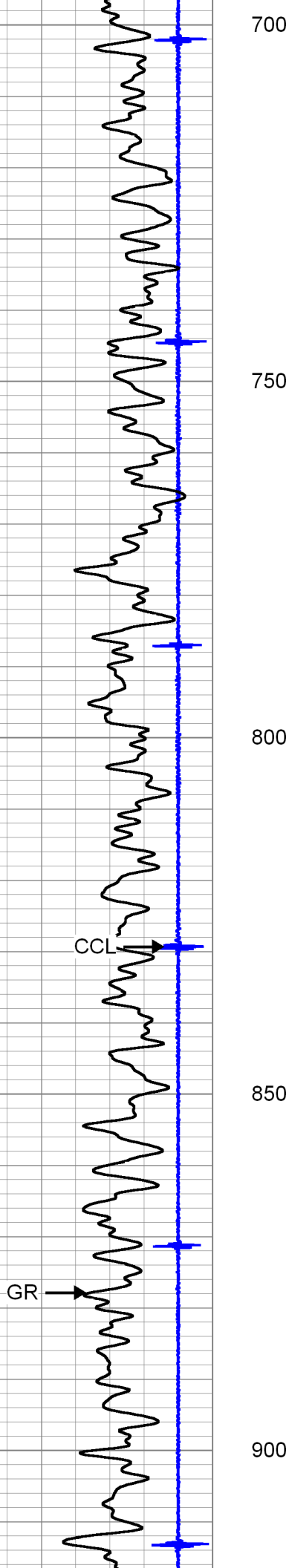
350

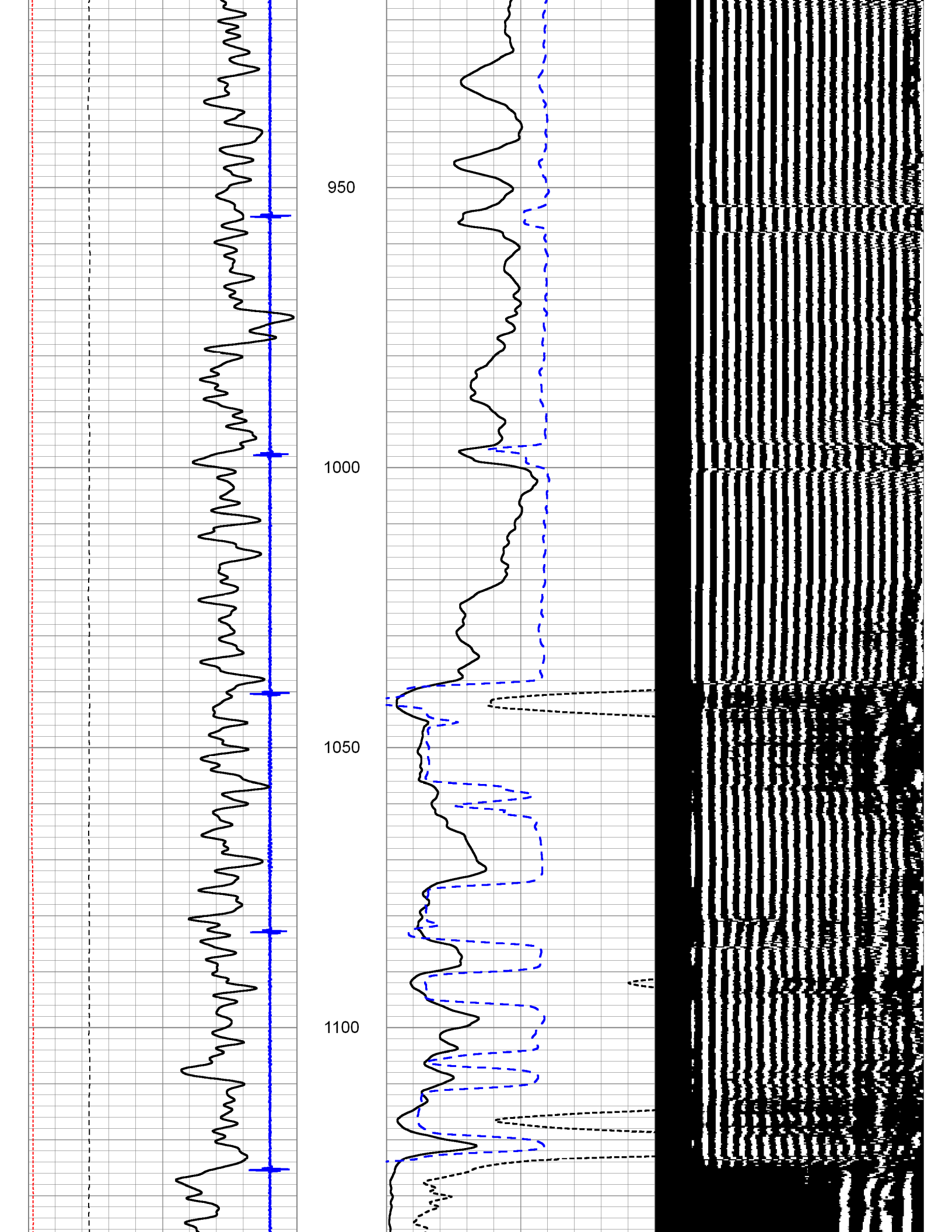
400

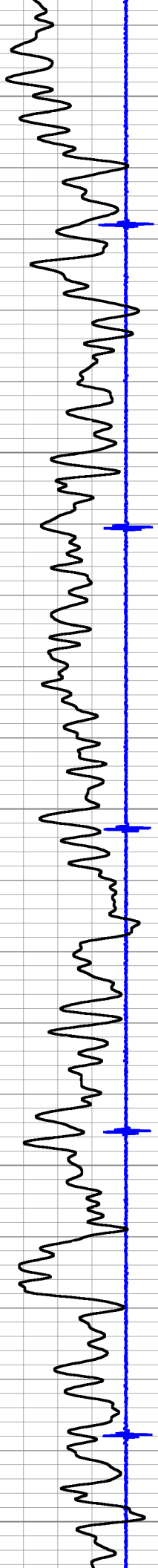
450











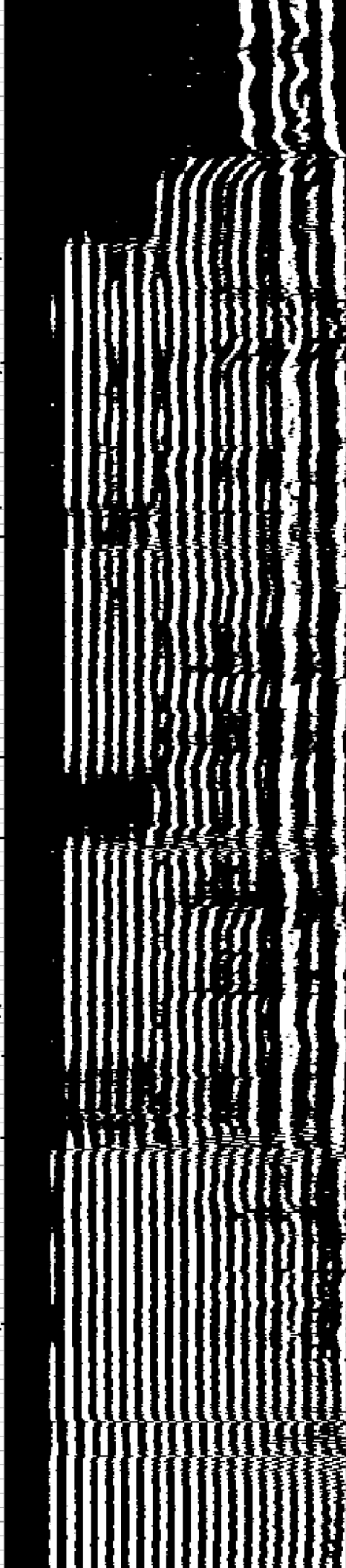
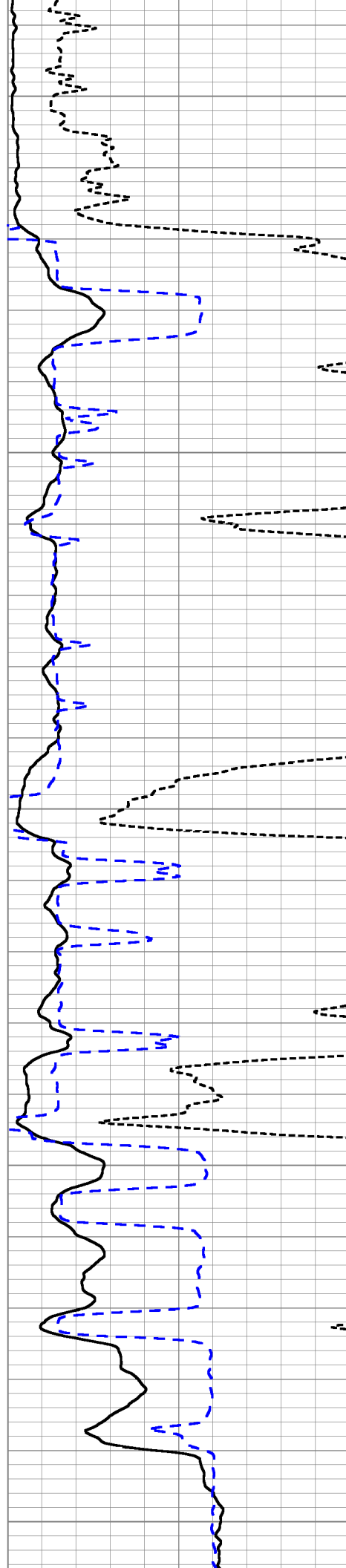
1150

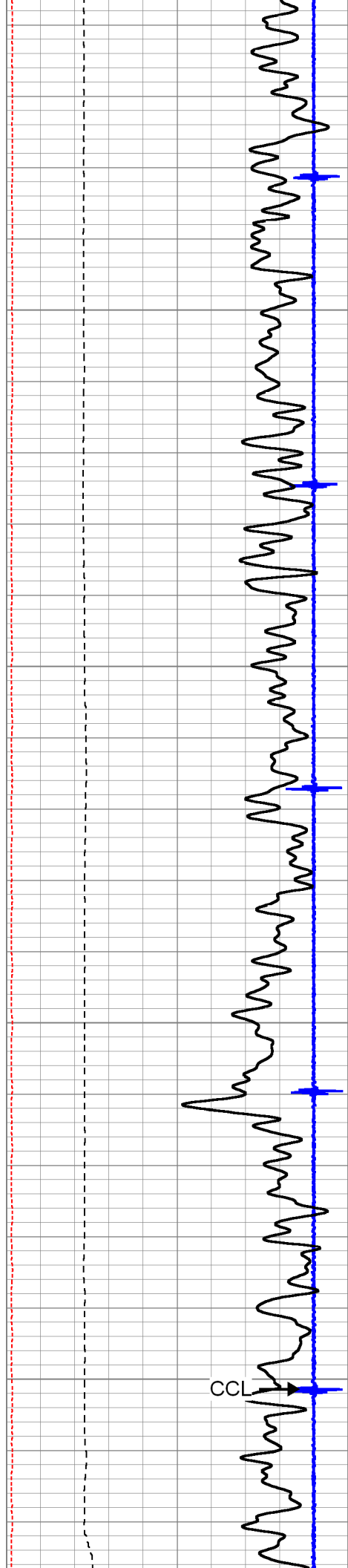
1200

1250

1300

1350





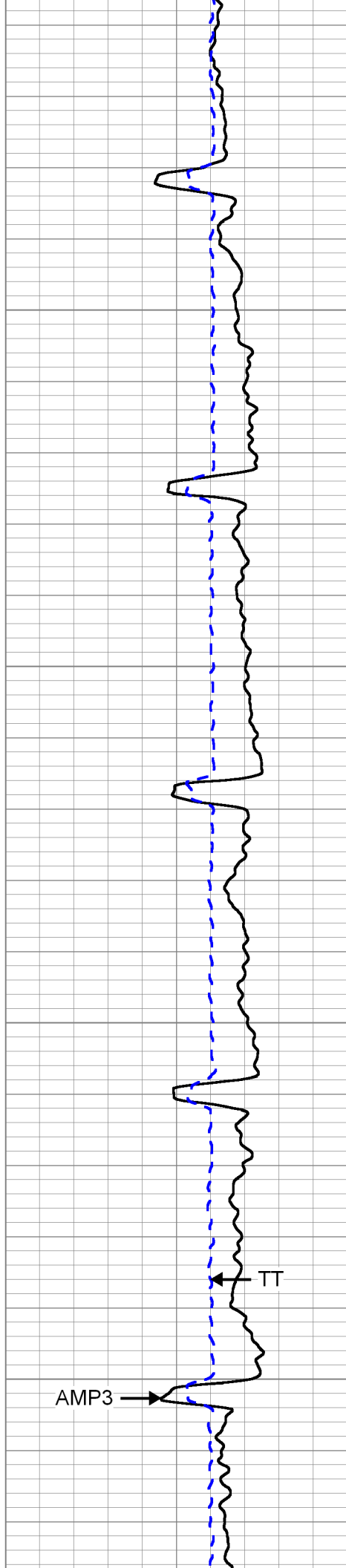
1400

1450

1500

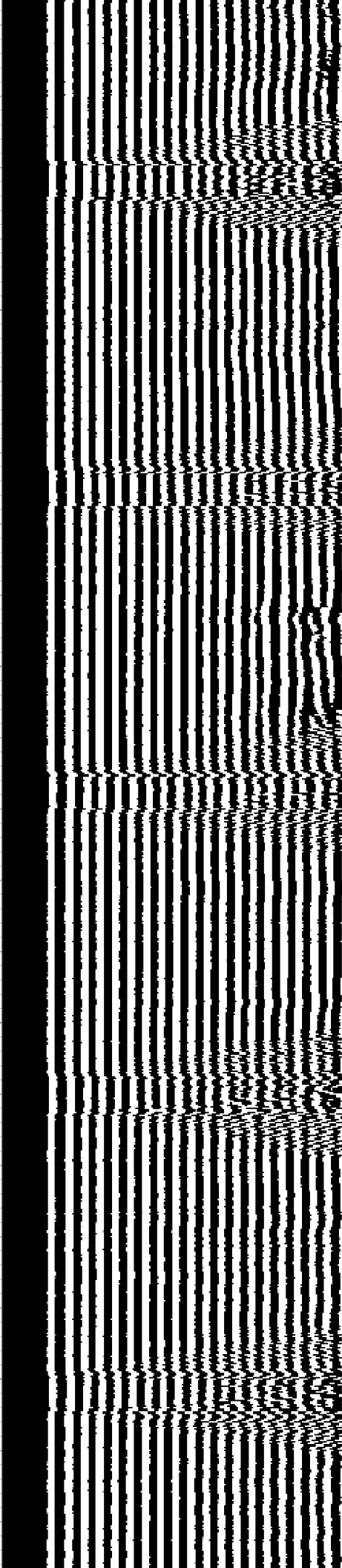
CCL

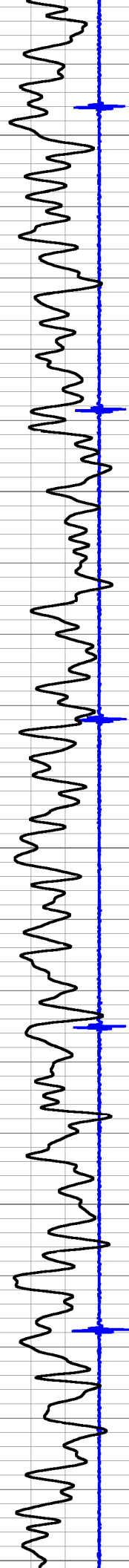
1550



TT

AMP3





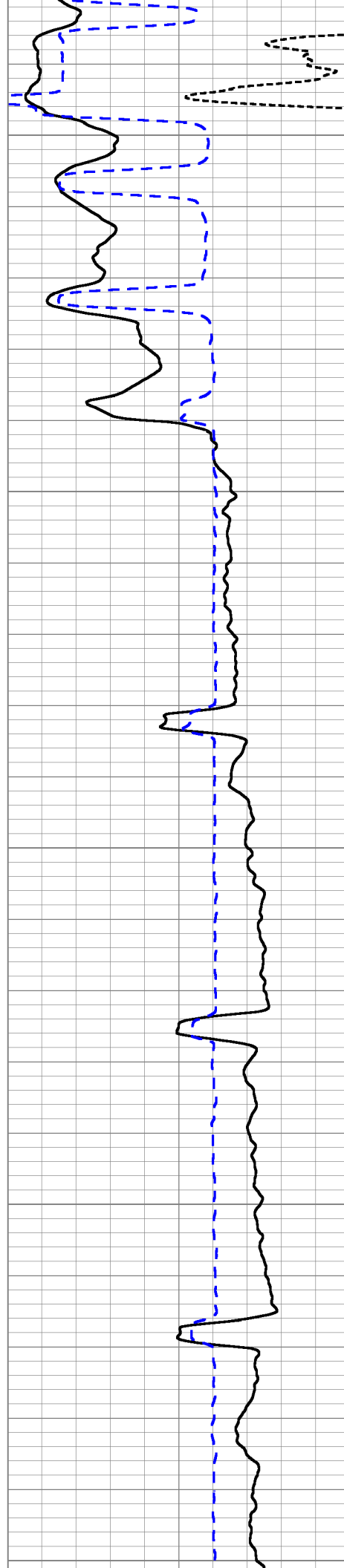
1300

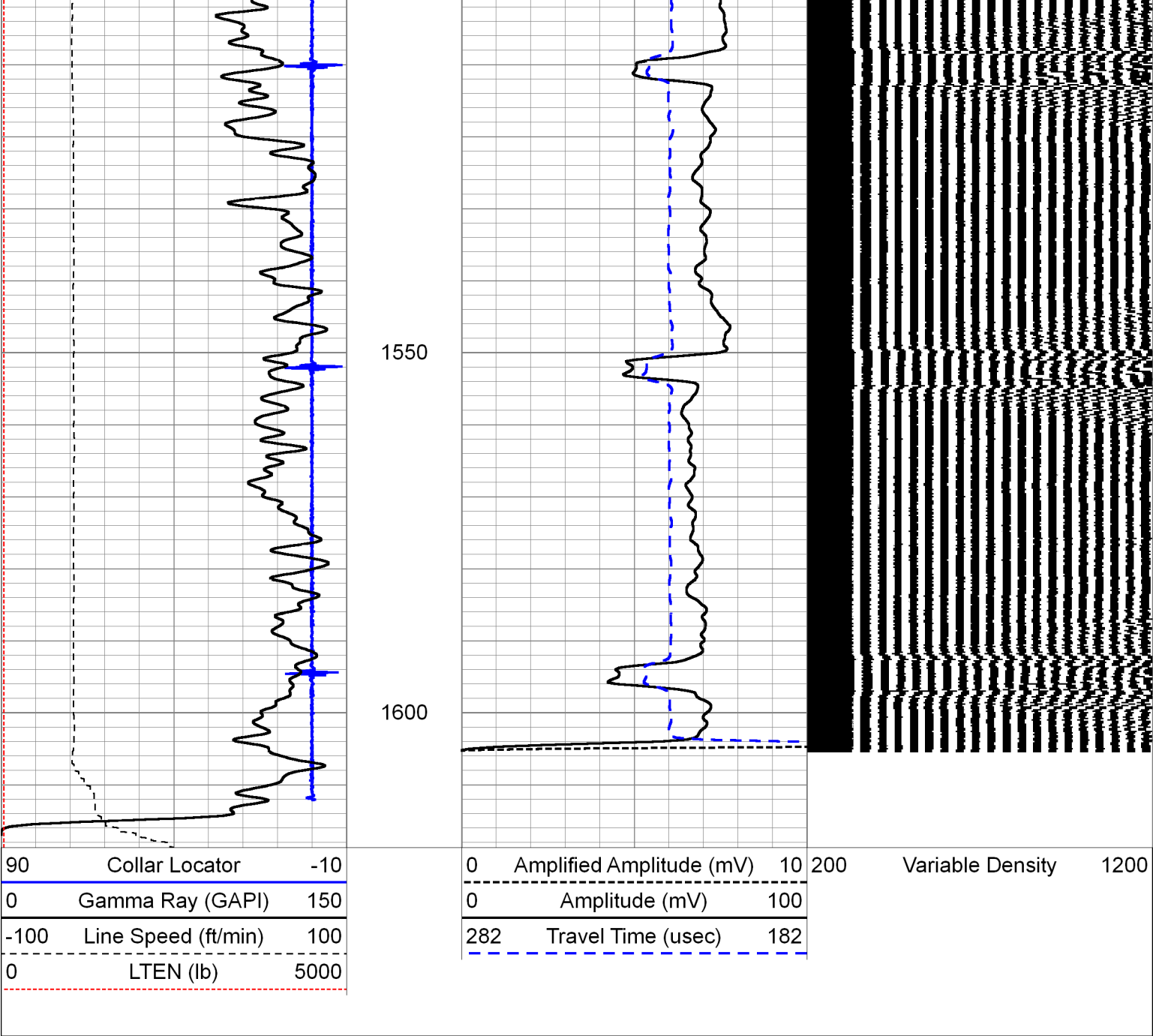
1350

1400

1450

1500





Sensor	Offset (ft)	Schematic	Description	Len (ft)	OD (in)	Wt (lb)
CHD	23.25		CHD-STNDRD (GOI) Standard Cable Head	1.00	1.69	10.00
CENT	22.25		PTS275	2.83	2.75	

WVF3	14.50		CBL-Digital (080430) Probe 275 CBL Standard	9.17	2.75	100.00
WVF5	13.50					
CENT	10.25		PTS275	2.83	2.75	
GR	7.42					
CCL	6.47		GR-Probe (080222) Probe 2.75" 4 Channel Pulse	4.58	2.75	30.00
GR	3.73					
CENT	2.83		PTS275	2.83	2.75	
Dataset: 01252016_greatwestern26-51.db: field/well/main/pass1 Total Length: 23.25 ft Total Weight: 140.00 lb O.D. 2.75 in						

	Company	GREAT WESTERN OPERATING COMPANY LLC.				
	Well	GREAT WESTERN 26-51				
	Field	WATTENBERG				
	County	WELD				
	State	COLORADO				Country U.S.A.